

MAKE YOUR OWN LUCK — SHEARWATER



Builder: SHEARWATER

Year Built: 2011

Model: Center Console

Price: PRICE ON APPLICATION

Location: United States

LOA: 23' 6" (7.16m)

Beam: 8' 2" (2.49m)

Max Draft: 1' 1" (0.33m)

Cruise Speed: 30 Kts. (35 MPH)

Our experienced yacht broker, Andrey Shestakov, will help you choose and buy a yacht that best suits your needs **Make Your Own Luck — SHEARWATER** from our catalogue. Presently, at Shestakov Yacht Sales Inc., we have a wide variety of yachts available on our sale's list. We also work in close contact with all the big yacht manufacturers from all over the world.

If you would like to buy a yacht **Make Your Own Luck — SHEARWATER** or would like help answering any questions concerning purchasing, selling or chartering a yacht, please call **+1(954)274-4435**

TABLE OF CONTENTS

TABLE OF CONTENTS	2
SPECIFICATIONS	3
Overview	3
Basic Information	3
Dimensions	3
Speed, Capacities and Weight	3
Hull and Deck Information	3
Engine Information	4
DETAILED INFORMATION	5
Test Results	5
Hull & Deck Features	5
Fishing, Electronics, & Electrical Systems	5
Exclusions	6
Disclaimer	6
PHOTOS	7
CONTACTS	10
Contact details	10
Telephones	10
Office hours	10
Address	10

SPECIFICATIONS

Overview

The Shearwater 23 LTZ hull design is precisely produced utilizing the Shearwater exclusive double hull foam core injection process. The process incorporates a structural sound outer hull chemically bonded to a matching full length inner hull with high strength water proof closed cell foam structural flotation foam core injected under pressure between the two hulls. The hand layered composite core material has an added layer of Dupont Kevlar over the entire bottom for extreme strength and puncture resistance. From the outside to the inside the Shearwater 23 LTZ is designed with quality, user-friendly and durability in mind. This Shearwater 23 LTZ is equipped with a Pro Verado 300hp, jackplate, power pole, 3 tournament livewells, custom black hull, pearl white powder coat package, Motorguide SW109 60", battery charge, (3) Underwater lights and "The Works" Tandem Trailer. Save thousands over new for a lightly enjoyed 23 LTZ. Contact us today for a private showing.

Basic Information

Category: Center Console

Model Year: 2011

Year Built: 2011

Country: United States

Dimensions

LOA: 23' 6" (7.16m)

Beam: 8' 2" (2.49m)

Max Draft: 1' 1" (0.33m)

Clearance: 6' 11" (2.11m)

Speed, Capacities and Weight

Cruise Speed: 30 Kts. (35 MPH)

Displacement: 2800 Pounds

Water Capacity: 10 Gallons

Fuel Capacity: 80 Gallons

Hull and Deck Information

Hull Material: Fiberglass

Engine Information

Manufacturer: Mercury

Model: Verado 300hp

Engine Type: Outboard

Fuel Type: Gas

DETAILED INFORMATION

Test Results

RPM GPH KNOTS

1000 1.1 4.3

2000 3.3 7

3000 8.2 10.3

3500 7.5 23

4000 10 29

4500 12.5 35

5000 17 39

6400 29.1 55

Hull & Deck Features

- Hand laid
- Kevlar Reinforced
- Composite Construction
- Closed-cell Structural & Floatation Foam
- Anchor Storage
- Front Storage
- (2) 10' Rod Lockers & Rack System
- Self-Bailing Cockpit
- LTZ Cooler
- Deluxe Console
- Hardtop

Fishing, Electronics, & Electrical Systems

- Lowrance HDS-8 GPS with Transducer
- 8' Black Power Pole & Remote
- Motorguide SW109 60" 36V 105# Thrust (Reverse is Intermittent)
- Guest III Battery Charger w/ Plug
- Battery Switch
- Battery Trays w/Mounts
- (3) Trolling Motor Batteries with Quick Release for TM
- Rocker Switches with Push Fuse Panel
- Wiring, Color Coded w/Chafe Protection
- Three Blue Underwater Lights

- “The Works” Tandem Trailer – Black Powder Coat, SS Fenders & Mag Wheels
- Seawater & Freshwater Washdown
- (3) Tournament Livewells

Exclusions

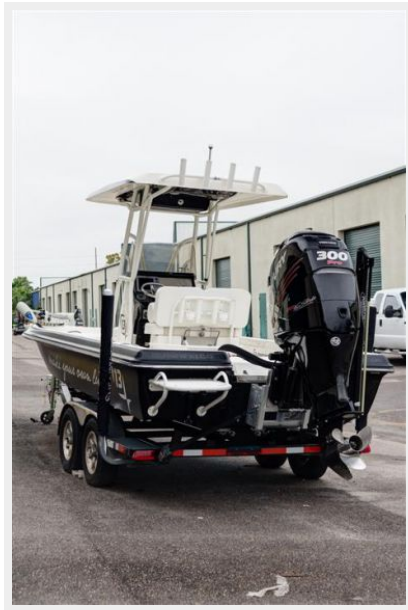
Owner's personal belongings.

Disclaimer

The Company offers the details of this vessel or yacht in good faith but cannot guarantee or warrant the accuracy of this information nor warrant the condition of the vessel. A buyer should instruct his representatives, agents, or his surveyors, to investigate such details as the buyer desires validated. This vessel or yacht is offered subject to prior sale, price change, or withdrawal without notice.

PHOTOS







CONTACTS

Andrey Shestakov, leading yacht broker of the sales department of Shestakov Yacht Sales Inc. Shestakov Yacht Sales Inc., the official representative of the Miami/Fort Lauderdale FL headquarters.

Contact details

Email: andrey@shestakovyachtsales.com

Web: shestakovyachtsales.com/en/

Telephones

USA: +1(954)274-4435

Office hours

Monday – Saturday: **9:00 - 21:00** EDT

Sunday: **closed**

Address



Harbour Towne Marina, 850 NE 3rd St,
STE 213, Dania, FL 33004