

LANE CHOICE — HATTERAS



Судостроитель: HATTERAS

Год постройки: 1996

Модель: Катер для спортивной рыбалки

Цена: **ЦЕНА ЯХТЫ ПО ЗАПРОСУ**

Местонахождение: United States

Длина общая: 65' 5" (19.94m)

Ширина: 18' 0" (5.49m)

Макс. осадка: 5' 4" (1.63m)

Крейс. скорость: 25 Kts. (29 MPH)

Макс. скорость: 32 Kts. (37 MPH)

Купить Lane Choice — HATTERAS а также выбрать подходящую вам яхту из нашего каталога яхт вам поможет опытный яхтенный брокер Андрей Шестаков. На сегодняшний день компания Shestakov Yacht Sales Inc. имеет большое количество яхт в собственном списке продаж, а также тесно сотрудничает со всеми крупными яхтенными производителями по всему миру.

Для того чтобы купить яхту Lane Choice — HATTERAS а также проконсультироваться по любому вопросу связанному с покупкой, продажей, чартером яхт позвоните по телефону **+7(918)465-66-44**.

ОГЛАВЛЕНИЕ

ОГЛАВЛЕНИЕ	2
ХАРАКТЕРИСТИКИ	4
Обзор	4
Основная информация	4
Размеры	4
Скорость, вместимость и масса	4
Размещение	5
Корпус и палуба	5
Информация о двигателе	5
ПОДРОБНОЕ ОПИСАНИЕ	6
Broker Comments & Service Updates	6
Test Results	6
Hull & Deck Features	6
Cockpit Features	7
Salon Features	7
Galley Features	7
Master Stateroom Features	8
Master Head Features	8
Port Guest Stateroom Features	8
Port Guest Head Features	9
Starboard Guest Stateroom Features	9
Starboard Guest Head Features	9
Utility & Laundry Room Features	9
Technical Features	10
Electrical Systems Features	10
Engine Room Features	11
Flybridge & Electronics Features	11
Исключения	12

Отказ от ответственности	12
ФОТОГРАФИИ	13
КОНТАКТЫ	39
Контактная информация	39
Телефоны	39
Время работы	39
Адрес	39

ХАРАКТЕРИСТИКИ

Обзор

A great selling boat, the Hatteras 65 Convertible is the most popular sport fishing boat her size ever built. She's a step up from the earlier Hatteras 60 Convertible. Not only are her lines more aggressive, but performance was improved as well. The hull is an extended and improved version of the 60 Convertible hull with a finer entry, balsa-cored hullsides, and prop pockets to reduce draft. Her standard three-stateroom, galley-up layout is highlighted by a spacious, beautifully appointed salon. With 183 square feet of space, the cockpit was the largest to be found in a production boat this size. Topside, the new enclosure for the flybridge is luxury on a grand scale. Aft controls assist with docking and backing down on a fish. Note the distinctive engine room air intakes in the hullsides. Typical of Hatteras yachts this size, the engine room is huge with good outboard access to the motors. The upgraded 1,350hp Detroit 16V92s will cruise at 25 knots and top out at 32 knots. A total of 120 of these yachts were built. Take this opportunity to buy the nicest, cleanest and expert maintained Hatteras 65 Convertible today!

Основная информация

Тип судна: Катер для спортивной рыбалки

Подкатегория: Convertible

Модельный год: 1996

Год постройки: 1996

Страна: United States

Размеры

Длина общая: 65' 5" (19.94m)

Ширина: 18' 0" (5.49m)

Макс. осадка: 5' 4" (1.63m)

Трапы: 23' 0" (7.01m)

Скорость, вместимость и масса

Крейс. скорость: 25 Kts. (29 MPH)

Макс. скорость: 32 Kts. (37 MPH)

Водоизмещение: 102000 Pounds

Вместимость воды: 460 Gallons

Вместимость сточного бака: 60 Gallons

Объем топливного бака: 1674 Gallons

Размещение

Всего кают: 3

Корпус и палуба

Материал корпуса: Fiberglass

Информация о двигателе

Двигатели: 2

Производитель: Detroit Diesel

Модель: 6V92

Тип двигателя: Inboard

Тип топлива: Diesel

ПОДРОБНОЕ ОПИСАНИЕ

Broker Comments & Service Updates

- ◦ Major Overhaul **06/2015 (Paperwork Available Upon Request)**
- Soda Blast Bottom 04/2014
- New Bottom – Super B Ablative & Marpo Epoxy 04/2014
- Compounded and Waxed June 2014
- (7) Portable Fire Extinguishers Certified 05/2014
- (1) Kidde 1301 Halon Engineered Fire Suppression System Certified 05/2014
- Engine Room Detailed 08/2014
- Aft custom sunshade with integral aluminum support
- Release Marine Fighting Chair in Cockpit UPGRADE
- USCG Basic Equipment

Test Results

RPM GPH KNOTS

1000	25	9
1250	32	13.2
1450	40	16.7
1650	65	19.3
1800	80	25
2000	95	27.5
2100	110	29.9
2300	120	32

Hull & Deck Features

- Soda Blast, Prime & Paint Bottom 04/2014 (\$11,976)
- Non-skid Deck – Painted
- Stainless Steel Bow Rails & Stanchions
- (3) Foredeck Hatches
- 8 Person Life Raft w/ Cover
- (3) Fuel Tanks Center-line (1674 Gallons)

Certifications:

- Meets Applicable USCG & ABYC Standards
- NMMA Certification

Cockpit Features

- 183 sqft of Molded Fiberglass Fishing & Fun
- (4) Rod Holders gunwale mounted
- Release Fighting Chair (4) Rod Holders
- Mezzanine Seating with removable cushions
- Tackle Center
- Storage Locker with Tackle Center
- Sink & Prep Station w/ Freshwater
- Live Baitwell
- Transome Fishbox
- In Deck Fishbox
- Boarding Step
- Freshwater Washdown
- Saltwater Washdown
- Dual Glendenning Cable Masters – Port & Starboard
- 60' Hubbell 50 Amp Shore Power
- TV/Telephone Inlet
- (2) Refrigerator / Freezer Drawers
- Engine Controls – Starboard

Salon Features

- Sony Flatscreen HDTV
- Carpet
- Carpet Runners
- L-Shape Leather Sofa w/ Storage
- White-washed Oak Finish
- Varnished Teak Coffee Table
- (2) Swivel Lounge Chairs (Blue)
- Valances
- Tinted Salon Windows
- CruisAirSMX A/C Heat, Fan & Speed Controls
- Main Distribution Panel 240V & 24V
- Omnivision VHS Player
- Yamaha AM/FM Stereo w/ iPod Adapter
- Yamaha CD Changer
- Sony DSS Receiver
- U-Shaped Dinette seating for (4) with Solid-Surface Table

Galley Features

- (4) Burner Whirlpool Glasstop Stove
- Whirlpool Stainless Steel Microwave
- Whirlpool Wine Cooler
- (2) SubZero Refrigerator / Freezer units, 2 drawers per unit
- Kenmore Dishwasher
- Scottman Icemaker
- Badger 5hp Garbage Disposal

Master Stateroom Features

- White-washed Oak Paneling
- Carpet
- Carpet Runners
- Padded Hullsides
- Vinyl Headliner
- Tapered Queen Berth w/ Drawer Storage Below
- Stereo w/ Speakers
- Toshiba Flatscreen HDTV
- Nightstands Port & Starbord
- 24V & 120V Lighting
- Private Head Access

Master Head Features

- Tub w/ Shower, Whirlpool Jets & Automatic Sump
- Ample Drawer Storage
- Vinyl Flooring
- Vinyl Headliner
- Molded Counter w/ Sink
- VacuFlush Head
- Exhaust Fan
- 24V & 120V Lighting

Port Guest Stateroom Features

- Carpeting
- Carpet Runners
- White-washed Oak Paneling
- Convertible Twin to Queen Berth w/ Storage Below
- Polyfoam Mattress
- Nightstand w/ Drawers

- Toshiba Flat Screen HDTV
- Cedar-lined Hanging Locker w/ Automacic Lights
- Screened Overhead Hatch
- 24V & 120V Lighting
- Full Length Mirror
- Stereo Speaker w/ Volume Control

Port Guest Head Features

- Vinyl Flooring
- Vinyl Head Liner
- Molded Counter w/ Sink
- Storage Cabinet w/ Mirrored Doors
- VacuFlush Head
- Exhaust Fan
- 24V & 120V Lighting

Starboard Guest Stateroom Features

- Carpeting
- Carpet Runners
- Polyfoam Mattresses
- (2) Single Bunks
- Drawers & Storage
- Cedar-Lined Hanging Locker w/ Automatic Light
- 24V & 120V Lighting
- Access to Utility / Laundry Room

Starboard Guest Head Features

- Vinyl Flooring
- Vinyl Headliner
- Molded Counter w/ Sink
- Screened Overhead Hatch
- Storage Cabinet w/ Mirrored Doors
- VacuFlush Head
- Exhaust Fan

Utility & Laundry Room Features

- (4) CruseAir Compressors
- 220V Utilitech Pump for Pressurized Freshwater System
- 220V CruisAir PMA 110C Pump for Seawater System w/ PERKO Sea Strainer
- Storage Cabinet
- Whirlpool Washer & Dryer
- 110V Westinghouse Upright Freezer

Technical Features

Control Station:

- Alarms, High-Water – Bilge & Cabin
- Compass
- Emergency Start System – Engines
- Horn
- Instrument Panels – High-Gloss Burl SmartCraft. Diagnostics: Instrumentation, Custom Sea Ray. SmartCraft 4-in-1 Multigauges (2) w/Low-Glare Blue Night Lighting & Chrome Bezels (Includes: Fuel Level, Oil Pressure, Voltmeter, Water Temperature) SmartCraft System Speedometer (Includes: Air & Water Temperature, Combined Fuel Level Range, GPS Interface)
- SmartCraft System Tachometers (2) (Includes: Depth, Engine Alarms/Hour Meters, Fuel Consumption/Usage, Trim Level)
- SmartCraft Digital Throttle & Shift (DTS) w/Trim Switch
- Steering, Power-Assisted
- Steering, Tilt Wheel
- Steering Wheel, Wood-Accent
- Switch Pads, Illuminated Weatherproof Electronic w/ISO Symbols & Dimmer Control

Electrical Systems Features

- Two 24V Heavy Duty Banks, 12V Batteries
- Three 24V Heavy Duty Banks, 12V Batteries for Engines
- 240V Automatic Battery Charger
- Transformer Connected Shoreline Inlets
- Two 240V Fused Inlets w/ (2) Shore Cords on Glendinning Port & Starboard
- Two 120V Fused Inlets, (2) Shore Cords
- Ground Fault Protection on AC Receptacles
- Battery Control Panel w/ Fuses
- 24V DC Distribution System
- 120/240V AC Distribution System
- SSB Ground Screen
- Battery Parallel System

- Lazarette 24V Groco Livewell Pump, 24V Johnson Saltwater Washdown Pump & 24V Port Cockpit Fishbox Macerator Pump
- (2) Forward Lazarette 24V Hydraulic Trim Tab Pumps
- Bridge – 110V ProMariner SS 60 Automatic Battery Charger
-

Engine Room Features

- 2014 Engine & Hull Survey Available Upon Request
- (2) Onan 20kW Generators w/ Approx 4865 hours, Dual Racor Filters
- 20 gal Hot Water Tank
- Manual Engine Gauges
- Shaft Log Spray Deflectors
- Electric Air Compressor
- Kidde 1301 Halon Engineered Fire Suppression System (Re-certified 05/2014)
- Portable Fire Extinguishers (7) (Re-certified 05/2014)
- (3) Highwater Alarm Sensors
- (5) Automatic Electric Bilge Pumps
- Ball-Valves on All Underwater through Hulls
- Auxiliary Engine-Driven Bilge Pump
- Engine Hour Meters (4640 Displayed)
- HRO Watermaker
- Freshwater Hose Bib
- Oytex Battery Charger
- 24V Enclosed Lighting
- 120V Fluorescent Lighting
- 24V Engine Compartment Exhaust Blowers
- Oil Changing System
- Fuel Primers
- (3) SPECTO Camera Interfaced to Furuno NAVNET at Helm
- 110V Outlets w/ GFCI Breaker

Flybridge & Electronics Features

- Aluminum Ladder to Flybridge
- Stainless Steel Rails & Stanchions
- L-Shape Lounger to Port w/ Rod Storage Below
- Aft Controls to Port w/ Engine Data
- Forward Station w/ All Controls, Engine Data & Electronics
- Clarion Stereo & CD Player

- (2) ICOM 502 VHF
- Furuno Depth/Speed
- (3) Furuno NAVNET VX2 10.5" Screens
- Furuno Open-Array 72nm Radar
- RCL-100 Point Pad Spot Light
- G6 KVH SAT TV Dome
- Robertson AP300X Autopilot
- 8" Richie Compass
- Three-sided EZ2CY Enclosure
- (6) Rockt Launcher Rod Holders
- Fiberglass Hardtop w/ Halogen Spreader Lights
- Rupp Tripple Spreader Outriggers
- Pompanette International Helm Chair
- (3) Electric Windshield Washer Blades

Исключения

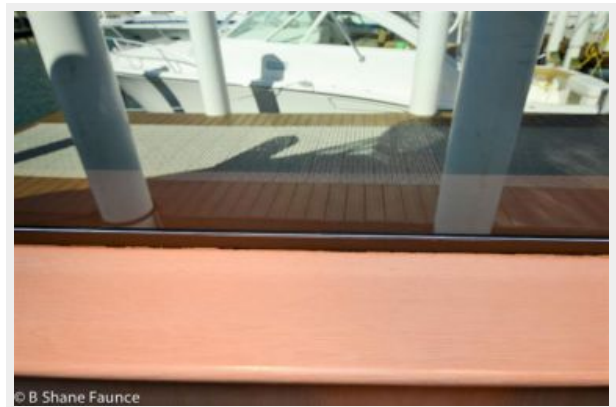
При продаже яхты исключаются личные вещи владельца.

Отказ от ответственности

Компания предоставляет описание судна или яхты добросовестно, но не может гарантировать точность этой информации, а также не ручается за техническое состояние. Покупатель должен проинструктировать своих агентов или оценщиков исследовать представленную информацию более подробно, по собственному желанию. Продажа судна или яхты, изменение цены или снятие с продажи будет происходить без предварительного уведомления.

ФОТОГРАФИИ



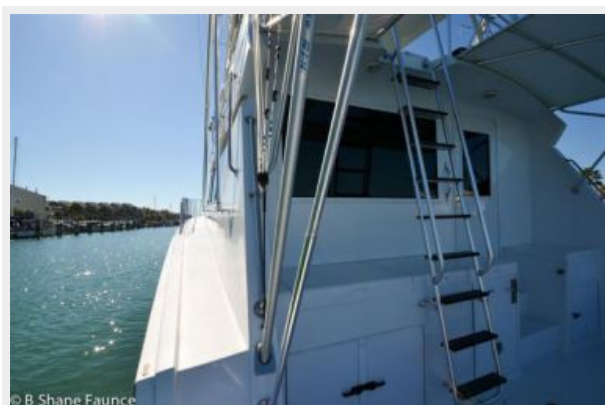


















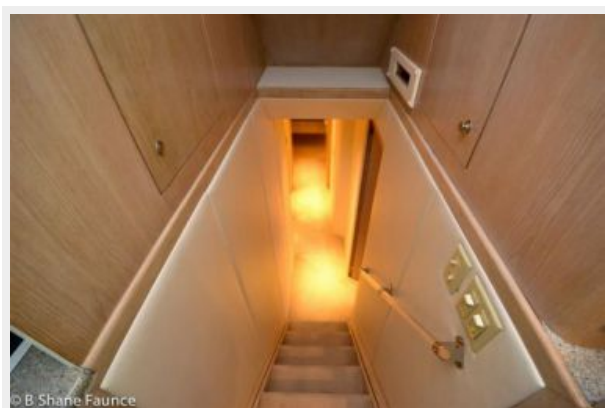






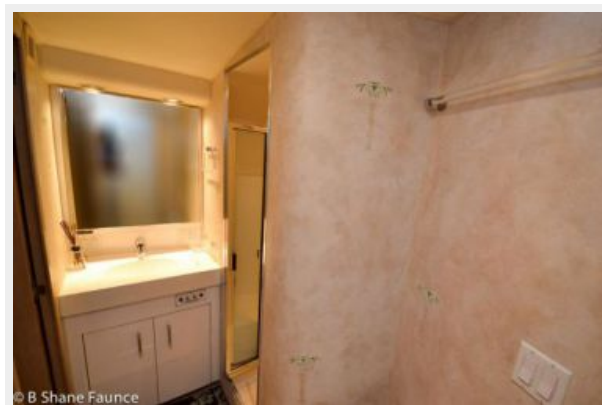
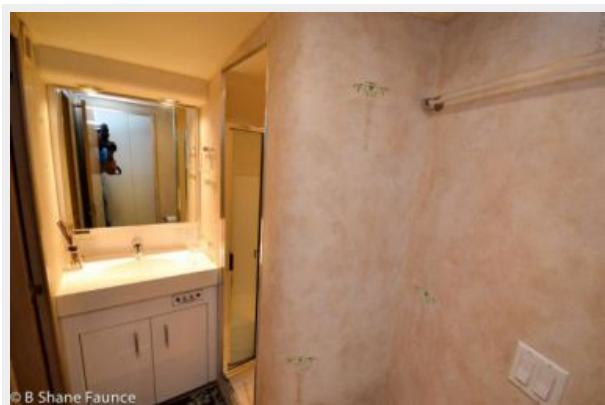


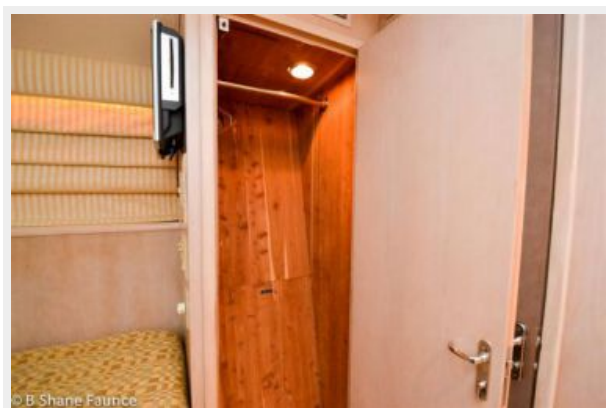






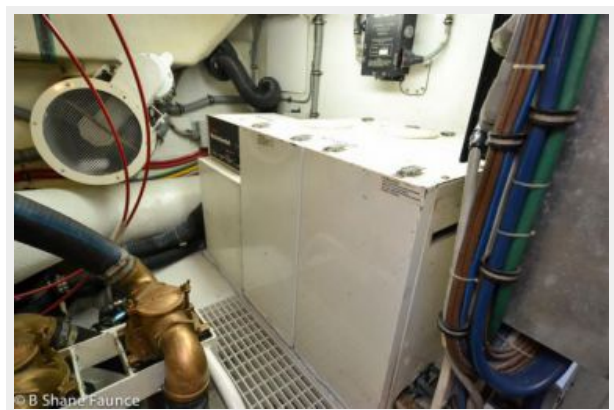


















КОНТАКТЫ

Андрей Шестаков (Andrey Shestakov) – ведущий яхтенный брокер отдела продаж яхт и судов компании Shestakov Yacht Sales Inc. Официальный представитель Shestakov Yacht Sales Inc. для русскоговорящих клиентов в центральном офисе компании в Майами/Форт Лодердейл/Флорида/США.

Контактная информация

Email: andrey@shestakovyachtsales.com

Web: shestakovyachtsales.com

Телефоны

Краснодарский край: **+7(918)465-66-44**

США, Майами, Флорида: **+1(954)274-4435**

Время работы

Понедельник – Суббота: **9:00 - 21:00**
EDT

Воскресенье: **Закрито**

Адрес



Harbour Towne Marina, 850 NE 3rd St,
STE 213, Dania, FL 33004