

MY WAY — MAINSHIP



Builder: MAINSHIP

Year Built: 1978

Model: Trawler

Price: PRICE ON APPLICATION

Location: United States

LOA: 34' 0" (10.36m)

Beam: 11' 11" (3.63m)

Min Draft: 2' 10" (0.86m)

Cruise Speed: 8 Kts. (9 MPH)

Max Speed: 14 Kts. (16 MPH)

Our experienced yacht broker, Andrey Shestakov, will help you choose and buy a yacht that best suits your needs **My Way — MAINSHIP** from our catalogue. Presently, at Shestakov Yacht Sales Inc., we have a wide variety of yachts available on our sale's list. We also work in close contact with all the big yacht manufacturers from all over the world.

If you would like to buy a yacht **My Way — MAINSHIP** or would like help answering any questions concerning purchasing, selling or chartering a yacht, please call **+1(954)274-4435**

TABLE OF CONTENTS

TABLE OF CONTENTS	2
SPECIFICATIONS	4
Overview	4
Basic Information	4
Dimensions	5
Speed, Capacities and Weight	5
Accommodations	5
Hull and Deck Information	5
Engine Information	5
DETAILED INFORMATION	6
34' Mainship Accomodations	6
34' Mainship Galley & Head	6
34' Mainship Electronics and Entertainment	6
34' Mainship Electrical	7
34' Mainship Mechanical Equipment	7
34' Mainship Canvas & General	8
34' Mainship Safety & Deck Equipment	8
34' Mainship Disclaimer	9
Exclusions	9
Disclaimer	9
PHOTOS	10
34' Mainship port aft profile	10
34' Mainship starboard aft profile	10
34' Mainship starboard side deck	10
34' Mainship foredeck	10
34' Mainship flybridge forward	11
34' Mainship flybridge aft	11
34' Mainship flybridge helm	11

34' Mainship cockpit aft	11
34' Mainship cockpit forward	11
34' Mainship salon forward	11
34' Mainship salon aft	12
34' Mainship salon port	12
34' Mainship salon starboard	12
34' Mainship galley photo1	12
34' Mainship galley photo2	12
34' Mainship lower helm photo1	12
34' Mainship lower helm photo2	13
34' Mainship stateroom	13
34' Mainship head	13
34' Mainship main engine	13
34' Mainship generator	13
CONTACTS	14
Contact details	14
Telephones	14
Office hours	14
Address	14

SPECIFICATIONS

Overview

The M/V "My Way" is a Mainship MK I which is one of the most popular small cruisers ever built. Inside the salon you will find a roomy practical floor plan with a single-stateroom forward, galley down to port, a lower helm station to starboard and two couches that convert into jacket knife beds in the salon. The head incorporates a hot/cold shower stall. She is constructed on a solid fiberglass laminate and her decks are sandwich construction with fiberglass outer layers and a balsa wood core. My Way's semi-displacement hull with a deep forefoot, slightly rounded bilges and a long full length keel closely resembles a down east style cruiser. This 34 MK I design has great appeal and had much to do with her trawler like features and sea going characteristics, she can handle the blue water. This combined with her superb fuel economy at better than trawler speeds (a semi-displacement hull) made her a very popular vessel. At a cruise speed of 8 knots her 200-hp Chrysler diesel burns only 2.5 gallons per hour.

Additional features include a teak swim platform, swim ladder, wide, safe, easy to access side decks, a comfortable aft deck, with a hardtop from the fly bridge that extends several feet over the aft cockpit, a fly bridge, one of the best parts of My Way which comfortably seats 6 to 8 and an Edson radar mast that is hinged for a lower air draft during your great loop adventure or weekend cruising. My Way will serve you well. There were over 900 of these MK 34's built over the ten year production cycle a testament to their construction, durability and customer satisfaction. Classically styled boats have enjoyed a resurgence over the last decade and the Mainship 34' My Way is a combination of good styling, comfortable accommodations, economical performance, reasonably priced and she is in great condition having spent all of her time in Lake Erie's fresh water.

Basic Information

Category: Trawler

Sub Category: Sedan

Model Year: 1978

Year Built: 1978

Country: United States

Vessel Top: Bimini Top

Fly Bridge: Yes

Cockpit: Yes

Dimensions

LOA: 34' 0" (10.36m)**Beam:** 11' 11" (3.63m)**Min Draft:** 2' 10" (0.86m)**Clearance:** 13' 6" (4.11m)

Speed, Capacities and Weight

Cruise Speed: 8 Kts. (9 MPH)**Cruise Speed RPM:** 1750 Kts.**Cruise Speed Range:** 550**Max Speed:** 14 Kts. (16 MPH)**Max Speed RPM:** 3150 Kts.**Displacement:** 14000 Pounds**Water Capacity:** 35 Gallons**Holding Tank:** 17 Gallons**Fuel Capacity:** 220 Gallons

Accommodations

Total Cabins: 1**Total Berths:** 3**Sleeps:** 4**Total Heads:** 1

Hull and Deck Information

Hull Material: Fiberglass**Deck Material:** Composite Fiberglass**Hull Color:** White**Hull Finish:** Plastic

Engine Information

Engines: 1**Manufacturer:** Chrysler**Model:** CM 655-TI-II**Engine Type:** Inboard**Fuel Type:** Diesel

DETAILED INFORMATION

34' Mainship Accomodations

One stateroom in the forward cabin

Full size berth lower starboard side

Single berth upper port side

Newer soft goods

1x hanging lockers

Two settees in salon both convert to jack knife beds

34' Mainship Galley & Head

2x Burner electric Princess stove

SS Sink

Litton microwave oven

Norcold refrigerator / freezer AC/DC

Hot / cold galley sink, vanity and shower

Separate shower stall

Head manual pump

34' Mainship Electronics and Entertainment

Lower Helm

VHF Polaris radio with 8db antenna

Intercom and hailer

Compass

Upper Helm

VHF Icom radio with intercom and hailer

Compass

Auto pilot Benmar 21

Ray Radar model # RL 9 LCD

Kenwood stereo AM/FM/CD

Salon

Pioneer Stereo AM/FM/CS w/remote

13" Symphonic TV

Marine TV antenna with amplifier

34' Mainship Electrical

Kohler model #3A027 3 KW

Guest battery charge 15 AMP, 2x banks

2x electric heaters (resistance heaters)

16,500 BTU AC with reverse cycle heat

1x 30 AMP (dock side) power cord

AC refrigerator/freezer in cockpit

34' Mainship Mechanical Equipment

Chrysler diesel model # CM655-T1

Rated @ 200 hp 3150 RPM

Approx hours 2,800+ hours

7.5-8.0 Knots @ 1750 RPMs

Fuel burn 2.5 GPH @ Cruise

14 Knots @ WOT

Range 500+ miles

Spare 3x Bladed bronze prop

Fuel polishing filters

Sea strainers on main, gen set and AC

Trim tabs w/controls at upper and lower stations

34' Mainship Canvas & General

Cockpit covers

Clear Eisenglass - 5x zippered panels

Black Sunbella - 5x zippered panels

Screens / sunshade (white) - 5x zippered panels

White sail cloth enclosure - 2x zippered panels

Other canvas

Windshield Covers - 2x (white and black)

Fly bridge mooring cover

General

Deck box with cushion for seating in aft cockpit

3x Folding deck chairs

High / Low table on casters

Edson fold down radar mast for lower air draft

Tinted windows - salon sides, sliding door and window panels

34' Mainship Safety & Deck Equipment

4x Adult life jackets

Hand held search light

Ring Buoy and cushion

Smoke detectors

2x Atwood 500 and 600 GPH bilge pumps

Dock lines 4x 15' and 2x 25' 1/2 diameter

Dual trumpet electric horns

Danforth anchor

5' chain and 150' Rode

34' Mainship Disclaimer

The Company offers the details of this vessel in good faith but cannot guarantee or warrant the accuracy of this information nor warrant the condition of the vessel. A buyer should instruct his agents, or his surveyors, to investigate such details as the buyer desires validated. This vessel is offered subject to prior sale, price change, or withdrawal without notice.

Exclusions

Owner's personal belongings.

Disclaimer

The Company offers the details of this vessel or yacht in good faith but cannot guarantee or warrant the accuracy of this information nor warrant the condition of the vessel. A buyer should instruct his representatives, agents, or his surveyors, to investigate such details as the buyer desires validated. This vessel or yacht is offered subject to prior sale, price change, or withdrawal without notice.

PHOTOS

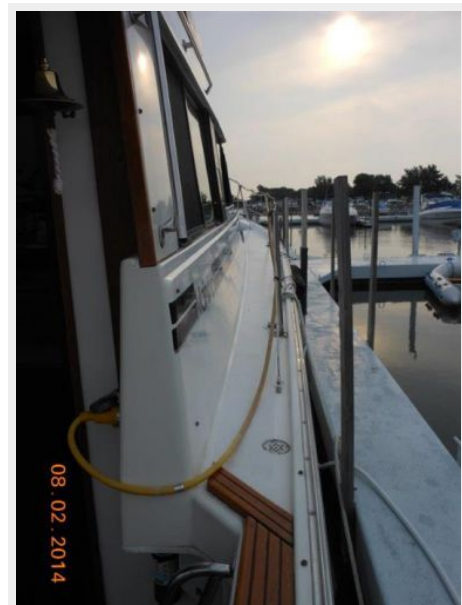
34' Mainship port aft profile



34' Mainship starboard aft profile



34' Mainship starboard side deck



34' Mainship foredeck



34' Mainship flybridge forward



34' Mainship flybridge aft



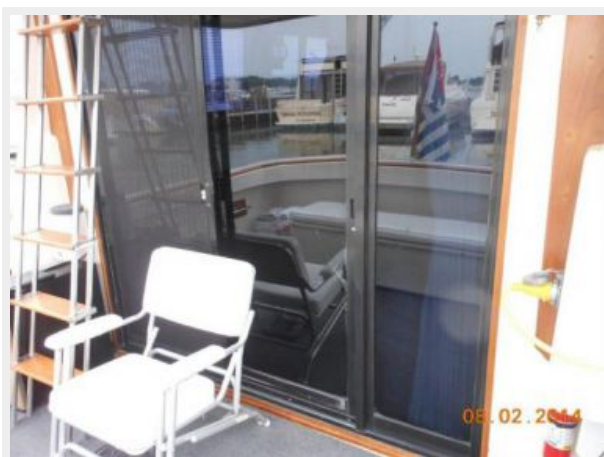
34' Mainship flybridge helm



34' Mainship cockpit aft



34' Mainship cockpit forward



34' Mainship salon forward



34' Mainship salon aft



34' Mainship salon port



34' Mainship salon starboard



34' Mainship galley photo1



34' Mainship galley photo2



34' Mainship lower helm photo1



34' Mainship lower helm photo2



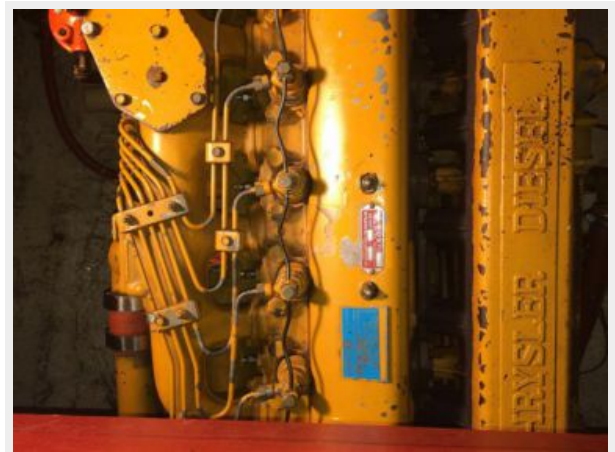
34' Mainship stateroom



34' Mainship head



34' Mainship main engine



34' Mainship generator



CONTACTS

Andrey Shestakov, leading yacht broker of the sales department of Shestakov Yacht Sales Inc. Shestakov Yacht Sales Inc., the official representative of the Miami/Fort Lauderdale FL headquarters.

Contact details

Email: andrey@shestakovyachtsales.com

Web: shestakovyachtsales.com/en/

Telephones

USA: +1(954)274-4435

Office hours

Monday – Saturday: **9:00 - 21:00** EDT

Sunday: **closed**

Address



Harbour Towne Marina, 850 NE 3rd St,
STE 213, Dania, FL 33004