

BRANCH N OUT — ENDEAVOUR



Builder: ENDEAVOUR

Year Built: 2000

Model: Catamaran

Price: PRICE ON APPLICATION

Location: United States

LOA: 36' 0" (10.97m)

Beam: 15' 0" (4.57m)

Min Draft: 2' 8" (0.81m)

Max Draft: 2' 8" (0.81m)

Cruise Speed: 10 Kts. (12 MPH)

Max Speed: 17 Kts. (20 MPH)

Our experienced yacht broker, Andrey Shestakov, will help you choose and buy a yacht that best suits your needs **Branch N Out — ENDEAVOUR** from our catalogue. Presently, at Shestakov Yacht Sales Inc., we have a wide variety of yachts available on our sale's list. We also work in close contact with all the big yacht manufacturers from all over the world.

If you would like to buy a yacht **Branch N Out — ENDEAVOUR** or would like help answering any questions concerning purchasing, selling or chartering a yacht, please call **+1(954)274-4435**

TABLE OF CONTENTS

TABLE OF CONTENTS	2
SPECIFICATIONS	5
Overview	5
Basic Information	5
Dimensions	5
Speed, Capacities and Weight	5
Accommodations	6
Hull and Deck Information	6
Engine Information	6
DETAILED INFORMATION	7
36' Endeavor Overview	7
36' Endeavor Vessel Walkthrough	7
36' Endeavor Accommodations	7
36' Endeavor Salon	7
36' Endeavor Galley	7
36' Endeavor Dining	8
36' Endeavor Master Stateroom	8
36' Endeavor Port Guest Stateroom	8
36' Starboard Guest Stateroom	8
36' Endeavor Upper Deck	8
36' Endeavor Audio/Visual Equipment	8
36' Endeavor Electronics	9
36' Endeavor Electrical Equipment	9
36' Endeavor Engine/Mechanical Equipment	9
36' Endeavor Deck Equipment	10
36' Endeavor Tender	11
36' Endeavor Safety & Fire Protection	11
36' Endeavor Exclusions	11

36' Endeavor Disclaimer	11
Exclusions	11
Disclaimer	11
PHOTOS	13
36' Endeavor Starboard Profile	13
36' Endeavor Aft Profile	13
36' Endeavor Anchor Windlass	13
36' Endeavor Foredeck	13
36' Endeavor Port Side Deck photo1	14
36' Endeavor Starboard Side Deck photo2	14
36' Endeavor Starboard Side Deck photo1	14
36' Endeavor Port Side Deck photo2	14
36' Endeavor Aftdeck Port	15
36' Endeavor Aftdeck Starboard	15
36' Endeavor BBQ Grill	15
36' Endeavor Tender	15
36' Endeavor Upper Deck Forward	15
36' Endeavor Upper Deck Aft	15
36' Endeavor Upper Deck Port	16
36' Endeavor Upper Deck Starboard	16
36' Endeavor Helm photo1	16
36' Endeavor Helm photo2	16
36' Endeavor Upper Deck Port Seating	16
36' Endeavor Upper Deck Starboard Seating	16
36' Endeavor Salon Forward	17
36' Endeavor Salon Aft	17
36' Endeavor Galley photo1	17
36' Endeavor Galley photo2	17
36' Endeavor Master Stateroom	17

36' Endeavor Master Stateroom Forward	17
36' Endeavor Head	18
36' Endeavor Master Stateroom Aft	18
36' Endeavor Shower	18
36' Endeavor Port Aft Stateroom	18
36' Endeavor Starboard Aft Stateroom	19
36' Endeavor Port Main Engine	19
36' Endeavor Port Racor Fuel Filter	19
36' Endeavor Oil Change System	19
36' Endeavor Starboard Forward Generator Room	20
36' Endeavor Electrical Panel	20
36' Endeavor Generator	20
CONTACTS	21
Contact details	21
Telephones	21
Office hours	21
Address	21

SPECIFICATIONS

Overview

36' Endeavour Trawler Cat 36 Power Catamaran

Branch N Out is a well-maintained 36' Endeavour Trawler Cat offering a 3 stateroom layout, newer electronics, dinghy, low hour Next-Gen generator and fuel efficient 125 hp Yanmar main engines. She is a perfect Great Loop candidate.

Basic Information

Category: Catamaran

Sub Category: Cruiser

Model Year: 2000

Year Built: 2000

Country: United States

Vessel Top: 2363

Dimensions

LOA: 36' 0" (10.97m)

LWL: 34' 6" (10.52m)

Beam: 15' 0" (4.57m)

Min Draft: 2' 8" (0.81m)

Max Draft: 2' 8" (0.81m)

Clearance: 12' 0" (3.66m)

Speed, Capacities and Weight

Cruise Speed: 10 Kts. (12 MPH)

Max Speed: 17 Kts. (20 MPH)

Displacement: 13000 Pounds

Water Capacity: 115 Gallons

Holding Tank: 30 Gallons

Fuel Capacity: 300 Gallons

Accommodations

Total Cabins: 3

Total Berths: 3

Sleeps: 6

Total Heads: 1

Hull and Deck Information

Hull Material: Fiberglass

Deck Material: Composite Fiberglass

Hull Configuration: Multi-Hull

Hull Color: White

Hull Finish: Stainless Steel

Engine Information

Engines: 2

Manufacturer: Yanmar

Model: 4JH3-STP

Engine Type: Inboard

Fuel Type: Diesel

DETAILED INFORMATION

36' Endeavor Overview

36' Endeavour Trawler Cat 36 Power Catamaran

Branch N Out is a well-maintained 36' Endeavour Trawler Cat offering a 3 stateroom layout, newer electronics, dinghy, low hour Next-Gen generator and fuel efficient 125 hp Yanmar main engines. She is a perfect Great Loop candidate.

36' Endeavor Vessel Walkthrough

From the aftdeck, you enter the upper deck and find benchseats on both sides, folding table with the port benchseat, 2 helm seats and the lower helm port forward. Step down into the salon and find the settee and table forward. Step down to starboard and find a guest stateroom aft and head forward, with generator access and storage are further forward. Step down to port and find another guest stateroom aft, the galley amidships and then the master stateroom forward.

36' Endeavor Accommodations

Branch N Out offers a 3 stateroom layout. Each stateroom offers a queen size berth. The master stateroom is forward and there are two guest staterooms aft. The head and separate shower are starboard forward.

36' Endeavor Salon

The salon offers an L-shaped settee with folding table, fans and vinyl teak & holly sole.

36' Endeavor Galley

The galley is located to port.

- Nova Kool refrigerator/freezer
- Hillerange 2 burner propane cooktop and oven
- GE microwave oven
- Double stainless steel sinks

- Storage cabinets and drawers
- Magma stainless steel BBQ grill on the aftdeck

36' Endeavor Dining

Dining space is available at the salon settee and table and at the upper deck table.

36' Endeavor Master Stateroom

The master stateroom is located forward and offers a queen size berth, 2 overhead hatches, 1 portlight, shelves, storage drawers and cabinets and a built-in seat.

36' Endeavor Port Guest Stateroom

The port guest stateroom offers a queen size berth, reading light, 2 portlights, overhead hatch, fan, shelf, storage cabinets and drawers and a hanging locker.

36' Starboard Guest Stateroom

The starboard guest stateroom also offers a queen size berth, reading light, 2 portlights, overhead hatch, fan, shelf, storage cabinets and drawers and a hanging locker.

36' Endeavor Upper Deck

The upper deck offers a hardtop, full Eisenglass enclosure with screens (2013), benchseats both sides with new cushions, folding table, 2 Todd helm seats, 2 opening windshields, fans, non-skid deck and a helm port forward.

36' Endeavor Audio/Visual Equipment

- Sharp flat screen HDTV with DVD in the salon
- Clarion M475 stereo in the salon
- Clarion stereo controller on the upper deck
- Audiovox TV/DVD/Stereo player in the starboard guest stateroom
- Seawatch TV antenna

36' Endeavor Electronics

- Garmin HD Radar
- Garmin 5212 GPSMap Multi-Function Display
- Garmin GPSMap 540s chart plotter
- Garmin GSD-22 depth sounder
- Garmin GXM-51 satellite weather receiver
- Simrad Robertson AP11 autopilot
- Icom IC-M412 VHF
- Standard Horizon Intrepid VHF with Ram mic
- Ritchie Powerdamp magnetic compass

36' Endeavor Electrical Equipment

- Next-Gen 3.5 kW generator with approximately 740 hours
- Paneltronics electrical panel
- Heart Interface Jazz 1500 watt inverter
- Statpower TrueCharge 40 amp battery charger
- 2 X 4D Lifeline house batteries (2010)
- 2 engine start batteries (2012)
- 30 amp shore cord

36' Endeavor Engine/Mechanical Equipment

- Twin Yanmar 4JH3-DTE 125 hp main engines
- Hurth HSWE 630 gearboxes
- Morse engine controls
- Hynautic hydraulic steering system
- Racor 500FG fuel filters

-
- FloScan fuel monitoring system
 - Reverso oil change system
 - Bennett trim tabs
 - Cruisair reverse cycle air conditioning/heating system with SMX II controls
 - Par Max 3 3.8 gph fresh water system pump
 - Seaward S700 water heater
 - Seagull IIV drinking water purification system
 - Jabsco fresh water system accumulator tank
 - Jabsco head
 - Tankwatch holding tank alert system
 - Jabsco maserator pump
 - Spare props

36' Endeavor Deck Equipment

- Maxwell 800 anchor windlass with foot controls
- Double stainless steel anchor rollers
- Delta anchor with 120' anchor chain
- Fortress anchor with 300' nylon rode
- Non-skid decks
- Stainless steel rails
- Stainless steel deck hardware
- Bow rail seats
- Fresh water washdown forward
- Hot/cold fresh water shower
- Sunshades
- Windshield cover

- AFI windshield wipers
- Stainless steel swim ladder

36' Endeavor Tender

- West Marine 280 9'3" RIB
- Mercury 4 hp 4-stroke outboard (2010)
- St. Croix davits

36' Endeavor Safety & Fire Protection

- AFI horns
- Seaward propane solenoid control
- Rule bilge pumps
- Manual bilge pump
- ACR 406 EPIRB

36' Endeavor Exclusions

- Sellers' personal belongings

36' Endeavor Disclaimer

The Company offers the details of this vessel in good faith but cannot guarantee or warrant the accuracy of this information nor warrant the condition of the vessel. A buyer should instruct his agents, or his surveyors, to investigate such details as the buyer desires validated. This vessel is offered subject to prior sale, price change, or withdrawal without notice.

Exclusions

Owner's personal belongings.

Disclaimer

The Company offers the details of this vessel or yacht in good faith but cannot guarantee or warrant the accuracy of this information nor warrant the condition of the vessel. A buyer should instruct his representatives, agents, or his surveyors, to investigate such details as the buyer desires validated. This vessel or yacht is offered subject to prior sale, price change, or withdrawal without notice.

PHOTOS

36' Endeavor Starboard Profile



36' Endeavor Aft Profile



36' Endeavor Anchor Windlass



36' Endeavor Foredeck



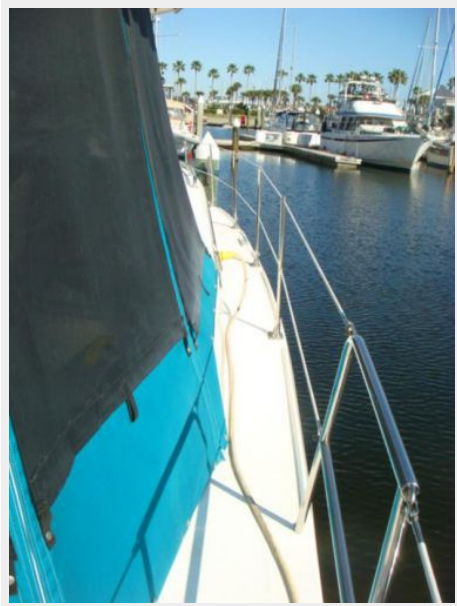
36' Endeavor Port Side Deck photo1



36' Endeavor Starboard Side Deck photo2



36' Endeavor Starboard Side Deck photo1



36' Endeavor Port Side Deck photo2



36' Endeavor Aftdeck Port



36' Endeavor Aftdeck Starboard



36' Endeavor BBQ Grill



36' Endeavor Tender



36' Endeavor Upper Deck Forward



36' Endeavor Upper Deck Aft



36' Endeavor Upper Deck Port



36' Endeavor Upper Deck Starboard



36' Endeavor Helm photo1



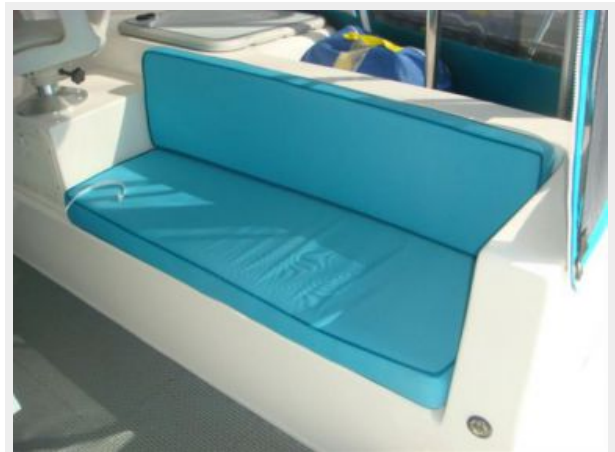
36' Endeavor Helm photo2



36' Endeavor Upper Deck Port Seating



36' Endeavor Upper Deck Starboard Seating



36' Endeavor Salon Forward



36' Endeavor Salon Aft



36' Endeavor Galley photo1



36' Endeavor Galley photo2



36' Endeavor Master Stateroom



36' Endeavor Master Stateroom Forward



36' Endeavor Master Stateroom Aft



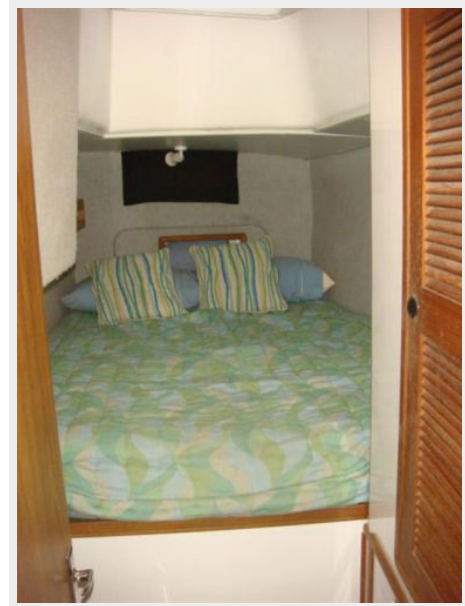
36' Endeavor Head



36' Endeavor Shower



36' Endeavor Port Aft Stateroom



36' Endeavor Starboard Aft Stateroom



36' Endeavor Port Main Engine



36' Endeavor Port Racor Fuel Filter



36' Endeavor Oil Change System



36' Endeavor Electrical Panel



36' Endeavor Starboard Forward Generator Room



36' Endeavor Generator



CONTACTS

Andrey Shestakov, leading yacht broker of the sales department of Shestakov Yacht Sales Inc. Shestakov Yacht Sales Inc., the official representative of the Miami/Fort Lauderdale FL headquarters.

Contact details

Email: andrey@shestakovyachtsales.com

Web: shestakovyachtsales.com/en/

Telephones

USA: +1(954)274-4435

Office hours

Monday – Saturday: **9:00 - 21:00** EDT

Sunday: **closed**

Address



Harbour Towne Marina, 850 NE 3rd St,
STE 213, Dania, FL 33004