

NEVER SAY NEVER — OCEANFAST



Судостроитель: OCEANFAST

Год постройки: 1985

Модель: Моторная яхта

Цена: **ЦЕНА ЯХТЫ ПО ЗАПРОСУ**

Местонахождение: United States

Длина общая: 122' 0" (37.19m)

Ширина: 24' 0" (7.32m)

Макс. осадка: 7' 2" (2.18m)

Крейс. скорость: 25 Kts. (29 MPH)

Макс. скорость: 33 Kts. (38 MPH)

Купить **Never Say Never — OCEANFAST** а также выбрать подходящую вам яхту из нашего каталога яхт вам поможет опытный яхтенный брокер Андрей Шестаков. На сегодняшний день компания **Shestakov Yacht Sales Inc.** имеет большое количество яхт в собственном списке продаж, а также тесно сотрудничает со всеми крупными яхтенными производителями по всему миру.

Для того чтобы купить яхту **Never Say Never — OCEANFAST** а также проконсультироваться по любому вопросу связанному с покупкой, продажей, чартером яхт позвоните по телефону **+7(918)465-66-44**.

ОГЛАВЛЕНИЕ

ОГЛАВЛЕНИЕ	2
ХАРАКТЕРИСТИКИ	6
Обзор	6
Основная информация	6
Размеры	7
Скорость, вместимость и масса	7
Размещение	7
Корпус и палуба	7
Информация о двигателе	7
ПОДРОБНОЕ ОПИСАНИЕ	8
Vessel Information	8
Исключения	26
Отказ от ответственности	26
ФОТОГРАФИИ	27
Salon	27
Salon	27
Salon	28
Salon	28
Salon	28
Salon	28
Dining	29
Dining	29
Dining	29
Dining	29
Bar	30
Bar	30
Galley	30
Galley	30

Galley	30
Galley	30
Master Stateroom	31
Master Stateroom	31
Master Stateroom	31
Master Stateroom	31
Master Head	32
Master Head	32
VIP Stateroom	32
VIP Stateroom	32
VIP Head	33
VIP Stateroom	33
VIP Head	33
VIP Head	33
Port Guest Stateroom	34
Port Guest Stateroom	34
Port Guest Stateroom	34
Port Guest Head	34
Port Guest Head	35
Starboard Guest Stateroom	35
Starboard Guest Stateroom	35
Starboard Guest Stateroom	35
Starboard Guest Head	36
Starboard Guest Head	36
Pilot House	36
Pilot House	36
Pilot House	36
Aft Deck	36
Aft Deck	37

Aft Deck	37
Aft Deck	37
Aft Deck	37
Day Head	37
Upper Helm	37
Upper Helm	38
Upper Helm	38
Upper Helm	38
Upper Helm	38
Top Deck	38
Top Deck	38
Top Deck	39
Top Deck	39
Top Deck	39
Top Deck	39
Top Deck	39
Top Deck	39
Top Deck	39
Top Deck	40
Bow	40
Stern	40
Bow	40
Crew	41
Crew	41
Crew	41
Crew	41
Engine Room	42
Engine Room	42
Engine Room	42
Engine Room	42

Engine Room	42
КОНТАКТЫ	43
Контактная информация	43
Телефоны	43
Время работы	43
Адрес	43

ХАРАКТЕРИСТИКИ

Обзор

"Never Say Never" is a beautiful 122 Oceanfast that was built in Australia and is likely the most recognizable yacht in Miami; having been featured in numerous high profile events and publicity stunts. Most notably she was the back drop for the music video "I'm on a boat" by Lonely Island and T-Pain and the marriage of music mogul Pharrel Williams. 'Never Say Never' has eye catching lines that exude Miami's modern and art deco architectural style and she bares the high end construction and sea keeping abilities synonyms with Oceanfast Yachts. She boats an elegant interior, incredible outdoor spaces and benefits from a knowledgeable and capable owner who afforded her with two extensive refits in 2004 and again in 2011. She has been continually upgraded and maintained to an extremely high level ever since her modifications were made. She features a Jacuzzi, four staterooms, gorgeous book matched burled wood accentuate her spacious rooms throughout and powerful MTUs that top her out at well over 32 kts. This kind of speed is a rarity to achieve with conventional drive shafts! Throttle back to 13 knots and 'Never Say Never' burns only 45 gallons an hour total; making her ideal for long range travel. This, coupled with a high cruising speed of 25 knots and an unbelievably shallow draft for her size make 'Never Say Never' one of the most versatile yachts in the market place. This yacht truly has it all and her current owner is aggressively looking to be replaced by you so he can attend to the finishing touches to his new Oceanfast. Simply imagine all the luxurious travels, exotic destinations and weekend getaways you, your friends and your family are sure to remember for a life time. To arrange a showing please contact the listing agents directly. **Recent upgrades include full bottom job with prop speed, reconditioned props, shaft alignment, new bearings, services to all thru-hulls, and more.**

All reasonable offers are highly encouraged.

Основная информация

Тип судна: Моторная яхта

Модельный год: 1985

Год постройки: 1985

Год обновления: 2004

Вид обновления: 2011

Страна: United States

Размеры

Длина общая: 122' 0" (37.19m)

Длина по ватерлинии: 114' 0" (34.75m)

Ширина: 24' 0" (7.32m)

Макс. осадка: 7' 2" (2.18m)

Скорость, вместимость и масса

Крейс. скорость: 25 Kts. (29 MPH)

Макс. скорость: 33 Kts. (38 MPH)

Чистый вес: 216 Pounds

Объем топливного бака: 5200 Gallons

Размещение

Всего кают: 4

Всего ком. состава: 7

Спальных мест экипажа: 3

Корпус и палуба

Материал корпуса: Aluminum

Информация о двигателе

Двигатели: 2

Производитель: MTU

Тип двигателя: Inboard

Тип топлива: Diesel

ПОДРОБНОЕ ОПИСАНИЕ

Vessel Information

Main Salon

The main salon is located just forward of the dining room. This is an expansive space with freestanding furniture; beautiful rich wood décor and six large circular windows to port and starboard make this a very unique and elegant room.

- Book Matched Burlled Mahogany wooden wall paneling with satin finish (2004)
- Premium, Scottish checked; stain resistant carpeting with mahogany accents (2004)
- Bose 5.1 Lifestyle surround sound system upgraded receiver
- Pop-up Samsung 55" LCD HD TV
- Crème whisper wall headliner panels
- Logitech A/V remote control system (2011)
- All LED Lighting with stainless steel fixtures (2011)
- Climate controls by Costal Climate Control
- Mahogany floor accents (2004)
- Brushed aluminium switch plate covers (2004)
- Samsung Blu-ray player
- (6) 4.5 foot diameter windows
- Custom teak Venetian style blinds (2004)
- Free standing designer furniture
- Carpet runner snaps

Dining Room

Located aft and features a gorgeous mahogany table as its centerpiece with seating for eight. Rich woods and beautiful exterior views encompass this room. The main salon is accessed via a few stairs forward and French style doors open aft to the aft exterior deck.

- Book Matched Burlled Mahogany wooden wall paneling with satin finish (2004)

- All LED Lighting with stainless steel fixtures (2011)
- High gloss Mahogany circular table, seating for (8) & custom alligator leather cover (2004)
- Seating in Ultra-leather bright white and Velvet taupe white
- Rich Mahogany planked floors (2004)
- Brushed aluminium switch plate covers (2004)
- Crème whisper wall headliner panels (2004)
- Smoke detector
- Mahogany wooden ceiling accents with designer chandelier
- Mahogany stairs with carpet liner to salon
- Custom tigers eye wooden dish cabinet with Midnight Storm granite counter top (2004)
- French style, tinted double doors to aft deck

Wet Bar

The bar area is located forward of the main salon featuring the same beautiful book matched burl mahogany wood paneling as the rest of the yacht and features a stunning full crystal ware display case. This area was designed with entertainment in mind and has ample space for both guests and bar tenders.

- Book Matched Burl Mahogany wooden wall paneling with satin finish (2004)
- Book Matched Burl Mahogany bar base with custom raised paneling (2004)
- Midnight Star granite counter top (2004)
- Custom crystal drink ware display case with accent lighting
- (2) Designer hi-boy bar chairs with Italian leather upholstery
- Crème whisper wall headliner panels (2004)
- All LED Lighting with stainless steel fixtures (2011)
- Brushed aluminum switch plate covers (2004)
- Premium, Scottish checked; stain resistant carpeting with mahogany accents (2004)
- Stainless steel sink with designer faucet
- Custom wood crafted wine storage

- Ample storage and custom bottle racks
- Climate controls by Costal Climate Control

Galley

Located all the way forward and outfitted well enough to please even Chef Emeril Lagasse. There is no shortage of wow factor to this vessels galley, featuring an industrial all stainless steel look and the best of the best in appliances and hardware. There is no shortage of storage and capacity with the ample number of pantries, refrigeration and over all cooking space.

- Viking stainless steel commercial grade professional series oven (2004)
- Viking stainless steel commercial grade professional series dishwasher (2004)
- Schott Ceran commercial grade ceramic cook top with (4) burners (2004)
- GE Profile Advantium 120 stainless steel microwave oven (2004)
- Custom spice rack (2004)
- Viking commercial grade vent fan (2004)
- Commercial grade stainless steel single piece sink (2004)
- Commercial grade faucet (2004)
- Stainless steel professional U-line icemaker (2004)
- Commercial grade Coldwright professional walk in refrigerator (2004)
- Commercial grade side-by-side refrigerators (2004)
- Commercial grade Premium freezer (2004)
- Miele stainless steel espresso and cappuccino machine (2004)
- Stainless steel counter tops (2004)
- Stainless steel walls (2004)
- Storm Cloud Grey marble tile flooring (2004)
- Crème whisper wall headliner panels (2004)
- All LED Lighting with brushed aluminium fixtures (2011)
- Custom magnetic knife rack
- Laundry room

- Whirlpool washing machine
- Miele dryer
- Outlet receptacles

Companionway and Stairwell

Located forward of main salon and gives access to day head, pilothouse, galley, crew quarters and staterooms. There is an incredible amount of storage cabinets found in the companion way and a large linen closet at the foot of the stairwell.

- Book matched burl mahogany wooden wall paneling with satin finish
- Mahogany wood floors
- More than ample storage
- Crème whisper wall headliner panels (2004)
- All LED Lighting with stainless steel fixtures (2011)
- Beautiful stainless steel handrail

Day Head

The day head is located to starboard when walking down the companionway.

- Solid Surface counter top with stainless steel designer Jado faucet
- Caroma porcelain sink basin
- Hand towel racks
- Designer mirror
- Traditional Teak and Holly floorings
- Crème whisper wall headliner panels (2004)
- All LED Lighting with stainless steel fixtures (2011)
- Brushed aluminium switch plate covers (2004)
- Stainless steel fixtures and hardware
- Vacuflush headhunter freshwater head (2004)

On-Deck Master Stateroom

Located on deck, a rarity in this size range; with beautiful views forward and to port and a full queen sized berth facing aft. She features a private in suite head, beautiful book matched burlled woods and all new LED lighting.

- Book Matched Burlled Mahogany wooden wall panelling with satin finish (2004)
- Premium, Scottish checked; stain resistant carpeting with mahogany accents (2004)
- All LED Lighting with stainless steel fixtures (2011)
- Fx-1 Digital climate controls by Costal Climate Control
- Brushed aluminum switch plate covers (2004)
- Queen sized center-lined berth facing aft
- Teak Venetian style blinds (2004)
- Massive cedar-lined hanging garment locker
- Headboard shelving in Burlled Mahogany (2004)
- Free standing designer night stand
- Smoke detector
- Free standing designer love seat
- Beautiful views to port and forward
- All stainless steel Hardware and fixtures
- Ample cabinetry storage
- Cedar lined closet
- Crème whisper wall headliner panels (2004)
- 26" Samsung LED HD TV (2011)
- Samsung Blu-ray player (2011)

On-Deck Master Head

- In suite and located aft and to port.
- Mahogany wooden wall paneling with satin finish

- Stainless steel towel rack
- Traditional Teak and Holly floorings
- Crème whisper wall headliner panels (2004)
- All LED Lighting with stainless steel fixtures (2011)
- Brushed aluminum switch plate covers (2004)
- Smoked privacy glass windows to port (2004)
- Vacuflush Headhunter head (2004)
- Solid Surface counter top with stainless steel designer Jado faucet (2004)
- Caroma porcelain sink basin (2004)
- Designer mirror (2004)
- Clear polycarbonate shower door
- Retractable towel and drying line in shower
- Traditional Teak and Holly floorings (2004)
- Southern European bidet by Toto
- Stainless steel fittings and fixtures
- Moulded sink and countertop
- Designer faucet
- Medicine cabinet
- Ample storage
- Teak shower floor
- Vent fan

Master Stateroom

Located Below decks and Aft. She features a full king sized bed with gorgeous custom headboard and a large in suite master bath.

- Mahogany wooden wall panelling with satin finish (2004)
- Premium, Scottish checked; stain resistant carpeting with mahogany accents (2004)

- Crème whisper wall headliner panels (2004)
- Free standing designer love seat
- All LED Lighting with stainless steel fixtures (2011)
- Brushed aluminium switch plate covers (2004)
- Custom Ultraleather headboard in snow white (2004)
- Custom teak bookshelves (2004)
- Night stands with midnight black granite counter tops (2004)
- Storage vanity with midnight black granite counter tops (2004)
- (2) Bed side LED lamps
- Designer beddings
- 36" Samsung LED HD TV (2011)
- Samsung Blu-ray player
- Massive walk-in cedar lined closet

Master Stateroom Head

- In suite and located to starboard.
- Mahogany wooden wall paneling with satin finish
- Stainless steel towel rack
- Traditional Teak and Holly floorings
- Crème whisper wall headliner panels (2004)
- All LED Lighting with stainless steel fixtures (2011)
- Brushed aluminium switch plate covers (2004)
- Smoked privacy glass windows to port (2004)
- Vacuflush headhunter freshwater head (2004)
- Solid Surface counter top with stainless steel designer Jado faucet (2004)
- Caroma porcelain sink basin(2004)
- Designer mirror (2004)

- Clear polycarbonate shower door
- Zip line retractable towel and drying rack in shower
- Traditional Teak and Holly floorings (2004)
- Southern European bidet by Toto
- Stainless steel fittings and fixtures
- Moulded sink and countertop
- Designer Jado faucet
- Mirror
- Medicine cabinet
- Ample storage
- Teak shower floor
- Vent fan

Guest Stateroom

Located on the lower deck and forward to port with 2 single berths and an optional 3rd pullman single berth. This room features a private in suite head and shower and all the comforts of home.

- Mahogany wooden wall paneling with satin finish (2004)
- Premium, Scottish checked; stain resistant carpeting with mahogany accents (2004)
- Crème whisper wall headliner panels (2004)
- All LED Lighting with brushed aluminum fixtures (2011)
- Brushed aluminum switch plate covers (2004)
- Vanity with Solid surface countertops
- (2) Single berths
- 15" Zenith LCD HD TV
- Dynex DVD player
- Optional pullman overhead berth to starboard
- Massive cedar lined closets

- Ample storage
- Stainless steel porthole to port
- Fire alarm

Guest Stateroom Head

- Located aft
- Mahogany wooden wall paneling with satin finish
- Stainless steel towel rack
- Traditional Teak and Holly floorings
- Crème whisper wall headliner panels (2004)
- All LED Lighting with stainless steel fixtures (2011)
- Brushed aluminum switch plate covers (2004)
- Vacuflush Headhunter freshwater head (2004)
- Solid Surface counter top with stainless steel designer Jado faucet (2004)
- Caroma porcelain sink basin (2004)
- Designer mirror (2004)
- Clear polycarbonate shower door
- Zip line retractable towel and drying rack in shower
- Traditional Teak and Holly floorings (2004)
- Southern European bidet by Toto
- Stainless steel fittings and fixtures
- Moulded sink and countertop
- Designer Jado faucet
- Mirror
- Medicine cabinet
- Ample storage
- Teak shower floor

- Vent fan

Guest Stateroom

Located on the lower deck and aft to starboard with 2 single berths and an optional 3rd pullman single berth. This room features a private in suite head and shower and all the comforts of home.

- Mahogany wooden wall paneling with satin finish (2004)
- Premium, Scottish checked; stain resistant carpeting with mahogany accents (2004)
- Crème whisper wall headliner panels (2004)
- All LED Lighting with stainless steel fixtures (2011)
- Brushed aluminum switch plate covers (2004)
- Vanity with Solid surface countertops
- (2) Single berths
- 15" Zenith LCD HD TV
- Dynex DVD player
- Optional Pullman overhead berth to starboard
- Massive cedar lined closets
- Ample storage
- Stainless steel porthole to port
- Fire alarm

Guest Stateroom Head

- Located aft
- Mahogany wooden wall paneling with satin finish
- Stainless steel towel rack
- Traditional Teak and Holly floorings
- Crème whisper wall headliner panels (2004)
- All LED Lighting with stainless steel fixtures (2011)
- Brushed aluminum switch plate covers (2004)

- Vacuflush Headhunter freshwater head (2004)
- Solid Surface counter top with stainless steel designer Jado faucet (2004)
- Caroma porcelain sink basin (2004)
- Designer mirror (2004)
- Clear polycarbonate shower door
- Zip line retractable towel and drying rack in shower
- Traditional Teak and Holly floorings (2004)
- Southern European bidet by Toto
- Stainless steel fittings and fixtures
- Moulded sink and countertop
- Designer faucet
- Mirror
- Medicine cabinet
- Ample storage
- Teak shower floor
- Vent fan

Pilothouse

- Traditional teak and holly decks (2004)
- Mahogany wooden wall paneling with satin finish (2004)
- Premium, Scottish checked; stain resistant carpeting with mahogany accents on stairs (2004)
- Midnight navy blue whisper wall headliner panels (2004)
- All LED Lighting with stainless steel fixtures (2011)
- Brushed aluminum switch plate covers (2004)
- Aft viewing seat in midnight navy blue ultra-leather
- Windshield wipers

- Digital climate controls by Costal Climate Contro
- Ample storage
- Access to navigation quarters
- Custom captains chair with stainless steel hardware and pedestal and midnight navy blue ultra leather
- Stainless steel hardware and fixtures
- Stairs to upper deck

Electronics, Navigation and Steering Pilothouse

- (3) Samsung LCD SyncMaster 192N 15" displays
- Acer LCD AL1916 15" Display
- (2) Furuno NavNet blackbox controls
- Robertson RI 45 analogue ruder indicator
- Robertson AP9 MK II autopilot control display
- Simrad CP33 Chartplotter
- Robertson FU 91 autopilot control rudder
- (2) ACR RCL-100 Point Pad spotlights
- EchoPlot forward looking sounder
- HP Pavilion desktop computer connected to Acer AL1916 15" Display
- (2) B&G HS 2 digital depth and speed LCD display
- Panasonic 6.0 Plus telecommunication phone wired throughout vessel
- Port and starboard engine display gauges
- Robertson S9 rudder control
- (2) MTU single lever controls
- (2) MTU RCS-FPP engine control pads
- Windshield wiper toggles
- iCom IC-M602 VHF

- Bow thruster master system panel by American Bow Thruster
- Bilge alarms and controls to port
- Steering pump selector
- (2) Northern Lights generator start/stop control panels with engine gauges
- P-Q Controls Inc. lever

Electronics Upper Helm

- Garmin 7212 GPSmap GPS/Chartplotter/Sounder 12" LCD display
- Robertson AP9 MK II autopilot control display
- Simrad CP33 Chartplotter
- Port and starboard engine display gauges
- Robertson S9 rudder control
- Ritchie Powerdamp Plus compass
- (2) ACR RCL-100 Point Pad spotlights
- P-Q Controls Inc. lever
- Analogue rudder indicator
- MTU single lever controls
- iCom IC-M602 VHF
- B&G HS 2 digital depth and speed LCD display
- Furuno NavNet C-MAP NT LCD radar screen
- (2) MTU RCS-FPP engine control pads
- ACR EPIRB

Audio and Visual Entertainment Equipment

- (3) MHD600/4 JL Audio boxes
- MHD700/1 JL Audio Box
- Denon DCM-290 sound system receiver in bridge
- Intellian antenna control unit in bridge

- Panamax M4300-pm in bridge
- Sea Tel, inc. TAC-92 tracking antenna control unit in bridge
- Sonos ZonePlayer ZP90 multi-room music system box
- Sonos digital MP3 unit with cradle
- WaveWiFi EC-HP marine wireless network box
- Cradlepoint Technology wireless network router (AT&T)
- Epson Artisan 800 wireless printer
- KVH Tracphone unit
- Intellian HD SAT TV antenna with multi room channel option

Lower Aft-Deck

- Teak decks (2004)
- High gloss, teak, inlaid compass rose dinette table and seating for 8 with cover (2004)
- Concealed electric storage compartment with massive storage capabilities
- (20) Overhead all LED lights with stainless steel fixtures2(2011)
- (2) JL Audio Speakers flush mounted speakers
- Designer outdoor furniture
- Swimming ladder
- Gangway
- Cockpit shower
- (2) Boarding doors to port and starboard
- Large stainless steel cleats and stainless steel hardware
- (2) Maxwell 2200 capstan windlass units for docking
- Access stairs to upper decks
- Access French style doors to dining room and main salon
- Custom swim platform with painted non-skid (2004)

Upper Aft-Deck

- Fully equipped wet bar with stainless steel sink and faucet
- U-line stainless steel icemaker
- Kenmore refrigerator with white face panel
- Alfesco stainless steel propane custom built-in grill with two separate pot burners
- Custom built-in Jacuzzi with teak access steps, 12 water jets and accent lighting
- Painted non-skid decks (2011)
- (4) Custom adjustable chaise style lounge chairs
- (2) Stainless steel mounted Tucci square umbrellas with water resistant red canvas and matching covers
- Stainless steel grab rails
- Freshwater spigot
- (8) Overhead all LED lights with stainless steel fixtures
- (6) JL Audio Speakers
- JL Audio subwoofer
- Access hatch with massive storage

Upper Bridge

- Teak decks (2004)
- U-shaped seating
- All LED lights with stainless steel fixtures
- High gloss teak table with inlaid compass rose
- Stainless steel ladder to crows nest
- Stidd captains chair at helm with cup holder
- Stainless steel grab rail
- Polycarbonate windshield helm screen
- 12v outlet at helm
- (16) LED lights with stainless steel fixtures (2011)

- Access to forward deck
- Lockable access to pilothouse via steps to starboard

Forward Deck

- This is a very open space and features sporty chaise style lounge chairs, davit, jetskis and ample seating.
- (4) Custom adjustable chaise style lounge chairs mounted on foredeck with ruby red cushions
- (2) Massive storage lockers
- (2) JL Audio Speakers
- (2) Forward located love seat style seats with black and white upholstery
- (2) Jet ski cradles
- Smoked Bomar access hatch to crews quarters
- Stainless steel railings
- Stainless steel hardware
- Swiftlift hydraulic davit with 1200lbs capacity
- Stainless steel ships bell
- (2) Maxwell 5000 stainless steel windlass'
- Chain
- (16) LED lights with stainless steel housings (2011)
- Large stainless steel cleats
- Stainless steel freshwater spigot

Crews Quarters

Located forward and connected with the galley. A total of three rooms with two consisting of single berth bunks and a third single stand alone room. Each room has an independent TV and A/V system and contain an in suite head.

- (5) Single berths in total

- (3) full heads with Vacflush toilets (2004)
- (2) Sharp Aqueous LED HD TVs
- Samsung LED HD TV
- Overhead escape hatch
- Ample storage and hanging lockers
- Overhead lighting
- Individual climate controls for each room

Exterior Features

- Swim Platform Extension (2004)
- Sundeck Extension with Jacuzzi and BBQ Area (2004)
- Sundeck Full Service Bar Fabrication (2004)
- Exterior Fly Bridge Modification (2004)
- New Mast Fabrication (2004)
- Forward Seating Fabrication (2004)
- Entire Boat was stripped down to bare metal (2004)
- New Awlgrip Ice Blue and Matterhorn White Paint Scheme (Latest: 2013)

Engine Room and Storage Locker

- (2) MTU 396 12v2000
- 42 KW John Deere Generator
- 60 KW John Deere Generator
- (2) ZF Transmissions BW 455 S
- (2) Acme 110 power transformers
- 3HP Quincy air compressor
- Sea Recovery SRC 10 M3-SW/H capable of manufacturing 108 gal of water an hr.
- (2) Glenndining CM-8 cable masters
- Frigidaire deep freezer

- 100 gal. hot water heater
- Inverter
- Electrical Circuit 240V
- Aquaair marine chilledwater system
- (4) Cruisair AC systems
- Atlas shore power classic system

Outlets

- Racor fuel/water separators
- Hydraulic systems for bow thruster, davit and windlass units
- All new Led Lighting (2011)
- Analogue engine and generator gauges
- Work station with (2) mounted toolboxes
- Overhead red engine alarm lights
- Back up manual rudder handle
- Major Exterior Upgrades 2004/2011
- Swim Platform Extension
- Sundeck Extension with Jacuzzi and BBQ Area
- Sundeck Full Service Bar Fabrication
- Exterior Fly Bridge Modification
- New Mast Fabrication
- Forward Seating Fabrication
- Entire Boat was stripped down to bare metal
- New Awlgrip Ice Blue and Matterhorn White Paint Scheme (Latest: 2013)

Major Interior Upgrades 2004/2011

- Relocation of Kitchen
- Expansion of Main Salon

- New Full Service Bar in Main Salon
- Book Matched Crotch Mahogany
- Mahogany Wood Floors
- New Carpets
- New Toilet System
- New Bathroom Fixtures
- New AV System with HD Satellite (Updated: 2011)
- New Appliances

Recent upgrades include full bottom job with prop speed, reconditioned props, shaft alignment, new bearings, services to all thru-hulls, and more.

Исключения

При продаже яхты исключаются личные вещи владельца.

Отказ от ответственности

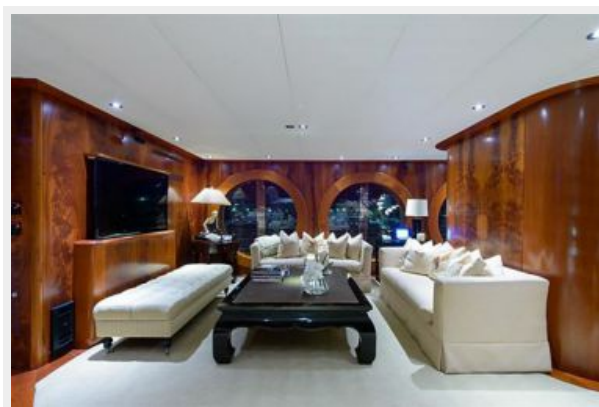
Компания предоставляет описание судна или яхты добросовестно, но не может гарантировать точность этой информации, а также не ручается за техническое состояние. Покупатель должен проинструктировать своих агентов или оценщиков исследовать представленную информацию более подробно, по собственному желанию. Продажа судна или яхты, изменение цены или снятие с продажи будет происходить без предварительного уведомления.

ФОТОГРАФИИ



Salon

Salon



Salon



Salon



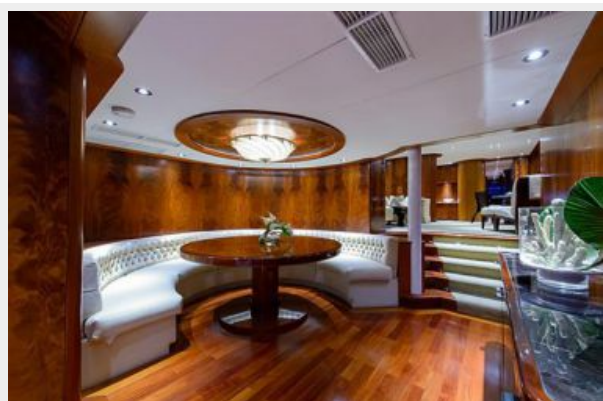
Salon



Salon



Dining



Dining



Dining



Dining



Bar



Bar



Galley



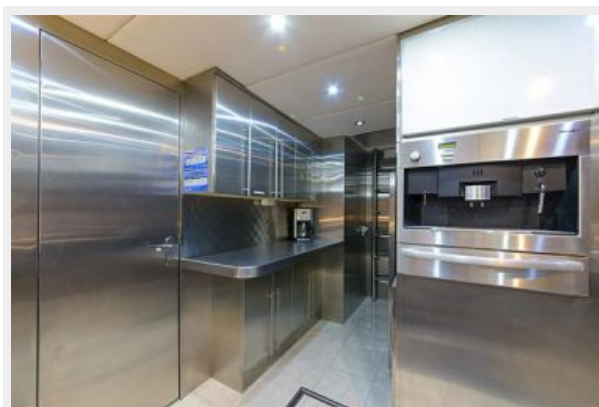
Galley



Galley



Galley



Master Stateroom



Master Stateroom



Master Stateroom

Master Stateroom



Master Head



Master Head



VIP Stateroom



VIP Stateroom



VIP Stateroom



VIP Head



VIP Head



VIP Head



Port Guest Stateroom



Port Guest Stateroom



Port Guest Stateroom



Port Guest Head



Port Guest Head



Starboard Guest Stateroom



Starboard Guest Stateroom



Starboard Guest Stateroom



Starboard Guest Head



Starboard Guest Head



Pilot House



Pilot House



Pilot House



Aft Deck



Aft Deck



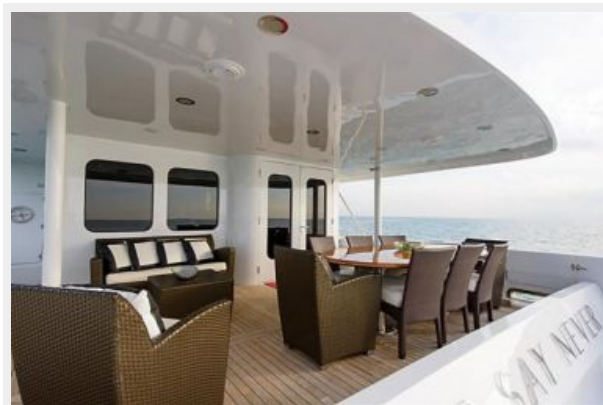
Aft Deck



Aft Deck



Aft Deck



Day Head



Upper Helm



Upper Helm



Upper Helm



Upper Helm



Upper Helm



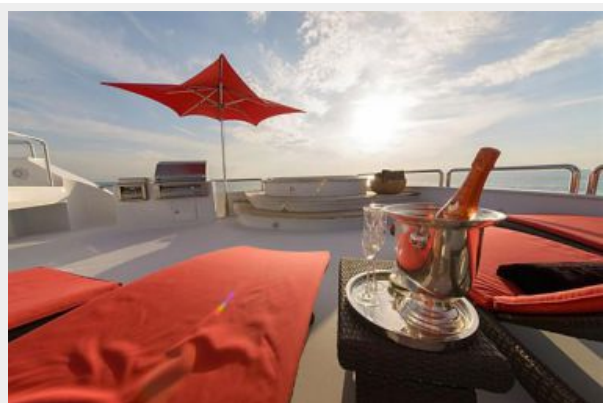
Top Deck



Top Deck



Top Deck



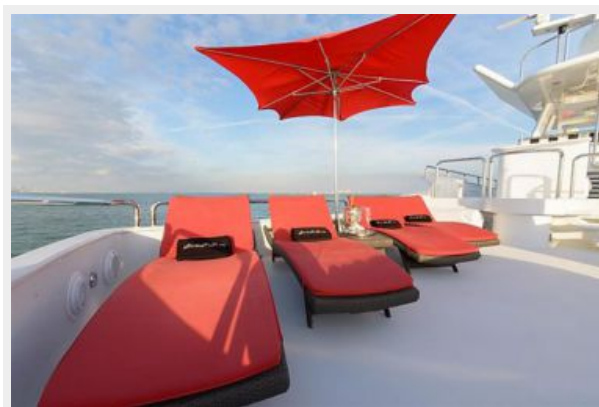
Top Deck



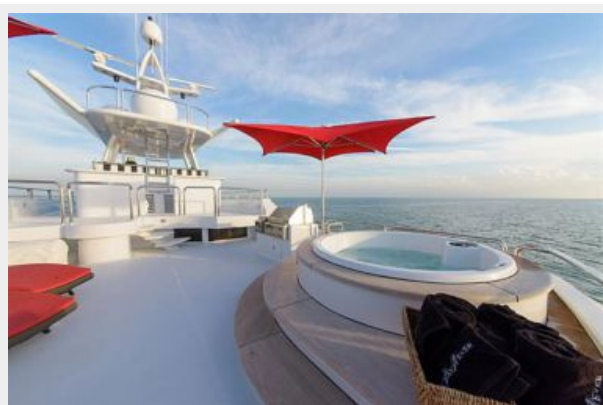
Top Deck



Top Deck



Top Deck



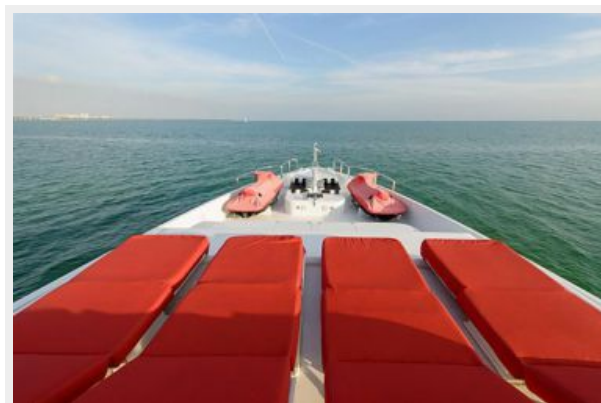
Top Deck



Top Deck



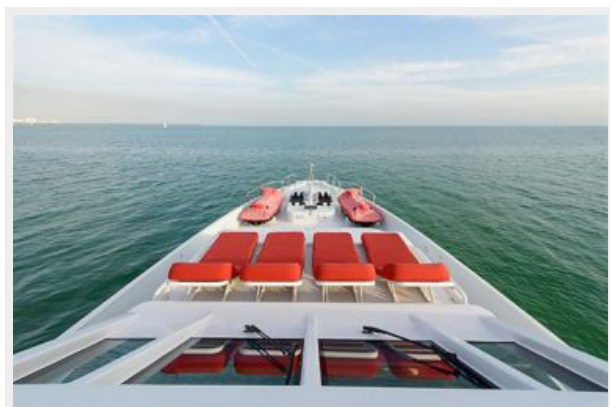
Bow



Stern



Bow



Crew



Crew



Crew

Crew



Engine Room



Engine Room



Engine Room



Engine Room



Engine Room



КОНТАКТЫ

Андрей Шестаков (Andrey Shestakov) – ведущий яхтенный брокер отдела продаж яхт и судов компании Shestakov Yacht Sales Inc. Официальный представитель Shestakov Yacht Sales Inc. для русскоговорящих клиентов в центральном офисе компании в Майами/Форт Лодердейл/Флорида/США.

Контактная информация

Email: andrey@shestakovyachtsales.com

Web: shestakovyachtsales.com

Телефоны

Краснодарский край: **+7(918)465-66-44**

США, Майами, Флорида: **+1(954)274-4435**

Время работы

Понедельник – Суббота: **9:00 - 21:00**
EDT

Воскресенье: **Закрето**

Адрес



Harbour Towne Marina, 850 NE 3rd St,
STE 213, Dania, FL 33004