

NEW VIKING 70 OPEN — VIKING



Builder: [VIKING](#)

Year Built: 2015

Model: Sport Fisherman

Price: PRICE ON APPLICATION

Location: United States

LOA: 70' 0" (21.34m)

Beam: 19' 7" (5.97m)

Max Draft: 5' 6" (1.68m)

Our experienced yacht broker, Andrey Shestakov, will help you choose and buy a yacht that best suits your needs **NEW Viking 70 Open — VIKING** from our catalogue. Presently, at Shestakov Yacht Sales Inc., we have a wide variety of yachts available on our sale's list. We also work in close contact with all the big yacht manufacturers from all over the world.

If you would like to buy a yacht **NEW Viking 70 Open — VIKING** or would like help answering any questions concerning purchasing, selling or chartering a yacht, please call **+1(954)274-4435**

TABLE OF CONTENTS

TABLE OF CONTENTS	2
SPECIFICATIONS	4
Basic Information	4
Dimensions	4
Speed, Capacities and Weight	4
Accommodations	4
Hull and Deck Information	4
Engine Information	4
DETAILED INFORMATION	5
Accommodations	5
Engine Options	5
Exclusions	5
Disclaimer	5
PHOTOS	6
Salon	6
Salon/Galley	6
Galley	6
Galley	6
Salon	6
Dinette	6
Head	7
Master Stateroom	7
Stateroom	7
Stateroom	7
Stateroom	7
Crew Stateroom	7
Head	8
Crew Stateroom	8

Companionway	8
Helm	8
Helm	9
Mezzanine Seating	9
Cockpit	9
Engine Room	9
Open Bridge	10
Open Bridge Salon	10
Standard Four Stateroom Layout	10
Optional Five Stateroom Layout	10
CONTACTS	11
Contact details	11
Telephones	11
Office hours	11
Address	11

SPECIFICATIONS

Basic Information

Category: Sport Fisherman

Model Year: 2015

Year Built: 2015

Country: United States

Dimensions

LOA: 70' 0" (21.34m)

Beam: 19' 7" (5.97m)

Max Draft: 5' 6" (1.68m)

Speed, Capacities and Weight

Displacement: 123876 Pounds

Water Capacity: 368 Gallons

Fuel Capacity: 2000 Gallons

Accommodations

Total Cabins: 4

Hull and Deck Information

Hull Material: Fiberglass

Engine Information

Engines: 2

Manufacturer: MTU

Model: 16V2000 M96

Engine Type: Inboard

Fuel Type: Diesel

DETAILED INFORMATION

Accommodations

Inside the 70' Viking, guests can relax in the generous salon, elaborately decorated with designer furnishings and overhead LED lighting. Four staterooms are comfortably offered, including a spacious master suite with private access to the engine room, cockpit and crew quarters.

With custom granite countertops, the galley features multiple drawers, cabinetry and lockers, under counter refrigeration and world class appliances.

The yacht's cockpit is 208-square feet including the mezzanine and includes multiple fish boxes, a live well, multiple freezers and lots of storage space.

Engine Options

- MAN V12 1550CRM 1550 MHP
- CAT C32A 1925 MHP
- MTU Series 2000-V16 M96L 2635 MHP

Exclusions

Owner's personal belongings.

Disclaimer

The Company offers the details of this vessel or yacht in good faith but cannot guarantee or warrant the accuracy of this information nor warrant the condition of the vessel. A buyer should instruct his representatives, agents, or his surveyors, to investigate such details as the buyer desires validated. This vessel or yacht is offered subject to prior sale, price change, or withdrawal without notice.

PHOTOS

Salon



Salon/Galley



Galley



Galley



Salon



Dinette



Master Stateroom



Head



Stateroom



Stateroom



Stateroom



Crew Stateroom



Crew Stateroom



Head



Companionway



Helm



Helm



Mezzanine Seating



Cockpit



Engine Room





Open Bridge

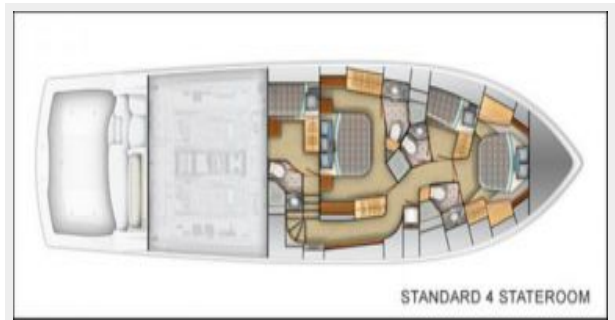
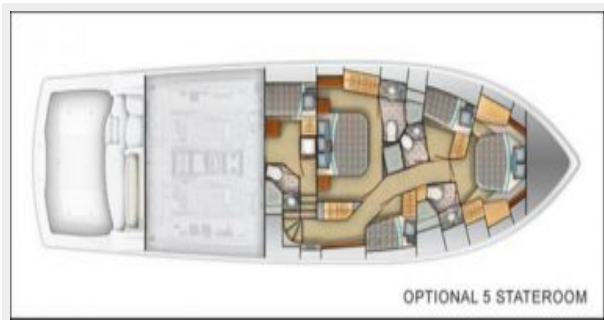


Open Bridge Salon



Standard Four Stateroom Layout

Optional Five Stateroom Layout



CONTACTS

Andrey Shestakov, leading yacht broker of the sales department of Shestakov Yacht Sales Inc. Shestakov Yacht Sales Inc., the official representative of the Miami/Fort Lauderdale FL headquarters.

Contact details

Email: andrey@shestakovyachtsales.com

Web: shestakovyachtsales.com/en/

Telephones

USA: +1(954)274-4435

Office hours

Monday – Saturday: **9:00 - 21:00** EDT

Sunday: **closed**

Address



Harbour Towne Marina, 850 NE 3rd St,
STE 213, Dania, FL 33004