

SKYFALL II — PALMER JOHNSON



Судостроитель: PALMER JOHNSON

Год постройки: 2007

Модель: Моторная яхта

Цена: **ЦЕНА ЯХТЫ ПО ЗАПРОСУ**

Местонахождение: United States

Длина общая: 150' 0" (45.72m)

Ширина: 27' 7" (8.41m)

Мин. осадка: 5' 8" (1.73m)

Макс. осадка: 6' 3" (1.91m)

Крейс. скорость: 22 Kts. (25 MPH)

Макс. скорость: 26 Kts. (30 MPH)

Купить Skyfall II — PALMER JOHNSON а также выбрать подходящую вам яхту из нашего каталога яхт вам поможет опытный яхтенный брокер Андрей Шестаков. На сегодняшний день компания Shestakov Yacht Sales Inc. имеет большое количество яхт в собственном списке продаж, а также тесно сотрудничает со всеми крупными яхтенными производителями по всему миру.

Для того чтобы купить яхту Skyfall II — PALMER JOHNSON а также проконсультироваться по любому вопросу связанному с покупкой, продажей, чартером яхт позвоните по телефону **+7(918)465-66-44**.

ОГЛАВЛЕНИЕ

ОГЛАВЛЕНИЕ	2
ХАРАКТЕРИСТИКИ	7
Основная информация	7
Размеры	7
Скорость, вместимость и масса	7
Размещение	7
Корпус и палуба	8
Информация о двигателе	8
ПОДРОБНОЕ ОПИСАНИЕ	9
Vessel Description	9
Salon	9
Dining	10
Audio/Visual Room	10
Main Galley	10
Master Stateroom	11
Master Stateroom His and Her Heads	11
Forward Starboard and Port Guest Staterooms	11
Forward and Port Guest Stateroom Heads	12
Aft Starboard and Port Guest Staterooms	12
Aft Starboard and Port Guest Heads	12
Crew's Quarters	12
Aft Deck and Main Deck	13
Sundeck	13
Fore Deck	13
Navigational Equipment	14
Helm Area	14
Engine Room	14
Electrical System	15

Исключения	15
Отказ от ответственности	16
ФОТОГРАФИИ	17
Salon	17
Salon	17
Salon	17
Salon	17
Salon	17
Dining	17
Bar	18
Dining	18
Bar	18
Theater Room	18
Theater Room	18
Theater Room	18
Theater Room Head	19
Helm	19
Helm	19
Helm	19
Master Stateroom	19
Master Stateroom	19
Master Stateroom	20
Master Stateroom	20
Master Stateroom	20
Master Stateroom	20
Master Stateroom Head	21
Master Stateroom Head	21
Master Stateroom Head	21
Master Stateroom Head	21

Master Stateroom Head	22
Master Stateroom Head	22
Master Stateroom Office	22
Starboard Guest Stateroom	22
Starboard Guest Stateroom Head	22
Port Guest Stateroom	22
Port Guest Stateroom Head	23
Port Guest Twin Stateroom	23
Port Guest Twin Stateroom	23
Port Guest Twin Stateroom	23
Port Guest Twin Stateroom	23
Port Guest Twin Stateroom Head	23
Starboard Guest Twin Stateroom	24
Starboard Guest Twin Stateroom	24
Starboard Guest Twin Stateroom	24
Starboard Guest Twin Stateroom Head	24
Starboard Guest Twin Stateroom Head	24
Upper Deck	24
Upper Deck	25
Upper Deck	25
Upper Deck	25
Upper Deck	25
Upper Deck	25
Upper Deck	25
Upper Deck	26
Upper Deck	26
Upper Deck	26
Upper Deck	26
Bow	26

Bow	26
Bow	27
Aft Deck	27
Aft Deck	27
Aft Deck	27
Aft Deck	27
Aft Deck	27
Aft Deck	28
Aft Deck	28
Aft Deck	28
Aft Deck	28
Aft Deck	28
Aft Deck	28
Aft Deck	28
Aft Deck	28
Aft Deck	29
Aft Deck	29
Aft Deck	29
Aft Deck	29
Aft Deck	29
Aft Deck	29
Aft Deck	29
Aft Deck	30
Aft Deck	30
Aft Deck	30
Aft Deck	30
Bow	30
Aft Deck	30
КОНТАКТЫ	32
Контактная информация	32
Телефоны	32
Время работы	32

Адрес

32

ХАРАКТЕРИСТИКИ

Основная информация

Тип судна: Моторная яхта

Модельный год: 2007

Год постройки: 2007

Год обновления: 2014

Страна: United States

Размеры

Длина общая: 150' 0" (45.72m)

Ширина: 27' 7" (8.41m)

Мин. осадка: 5' 8" (1.73m)

Макс. осадка: 6' 3" (1.91m)

Скорость, вместимость и масса

Крейс. скорость: 22 Kts. (25 MPH)

Макс. скорость: 26 Kts. (30 MPH)

Макс. скорость поворота: 2100 Kts.

Вместимость воды: 1506 Gallons

Объем топливного бака: 10831 Gallons

Размещение

Всего кают: 5

Всего коек: 12

Спальные места: 12

Всего ком. состава: 7

Каюта капитана: Да

Каюты экипажа: 3

Койки экипажа: 6

Спальных мест экипажа: 6

Корпус и палуба

Материал корпуса: Aluminum

Материал палубы: Teak

Отделка корпуса: Aluminum

Дизайнер экстерьера: Palmer Johnson

Дизайнер интерьера: Evan K. Marshall

Информация о двигателе

Двигатели: 2

Производитель: MTU

Модель: 16V4000

Тип двигателя: Inboard

Тип топлива: Diesel

ПОДРОБНОЕ ОПИСАНИЕ

Vessel Description

This spectacular 150' Palmer Johnson has just arrived in South Florida after a major refit, designed by Evan K. Marshall. Skyfall II has amenities to take you cruising to the destinations of your imagination. Notable features include 3 new Seakeeper 26000 zero speed gyro stabilizers, a seamless transfer shore power system which converts any voltage and frequency. Complete exterior paint and teak decks with newly manufactured sundeck hardtop.

The interior is artfully conceived and re-designed. Ebony and leather paneling, granite and marble with backlite onyx throughout the 5 staterooms and living areas. The accommodations for owner and guest number up to 12, served by a crew of 7-8. There are many areas for play and entertaining; large sundeck with new Jacuzzi and sit down bar, the aft deck for alfresco dining overlooking the large sun lounge with smooth lines running down to the waterline. Skyfall II is the ultimate sport yacht with cutting edge styling and distinctive sleek profile and performance.

Interior

- Refit 2014, custom interior design by Evan K. Marshall.
- Premier ebony wood throughout
- Exotic leather of crocodile
- Oak hardwood flooring and fabrica carpet throughout, except marble and teak in baths

Salon

Amazing attention to detail was used in the refit, using all high end fixtures amongst exotic leather wood and stone. Crocodile leather accent s the salon windows with full length floor to ceiling views in the dining area. Always feeling fresh with beautiful Oakwood flooring. The decorative raised ceiling panels throughout the boat are C & C 3D wave patterns of solid wood finished in high gloss silver. Perimeters are wrapped in baseball stitched leather. The bulkheads are dark stain lacewood with furniture of Ebony and Wenge wood. The oversized leather sofa seats 7-8 facing a backlit Honey Onyx topped bar with three stools. There is a cozy table for 2, whether for a quick meal or a game of cards.

- Large flat screen TV aft
- Matching artistic ceiling inlays
- Electronically controlled curtains
- Storage cupboards with sliding doors
- Automatic salon door aft

- Service door between salon bar and aft deck bar
- Powder room finished with Honey Onyx and Crystal Bakehouse art lighting

Dining

- Large high gloss table of Ebony seats 10 with crystal Bakehouse art lighting overhead
- Cademo Parete wall lights
- Storage cupboards with setting for 14 “Bugatti”
- Full length salon windows with a view to the sea through custom windows installed in bullworks
- Hidden access to raised pilot house behind large sliding mirror trimmed in Ebony wood
- Access door port to exterior walkaround deck

Audio/Visual Room

- Located on main deck forward of salon
- Large u-shaped leather couch
- Decorative leather wall aft with cricked ball stick
- Electric controlled curtains
- Media center with 60” Samsung flat panel TV trimmed in Ebony and black leather
- Full carpet
- In room powder room, added in refit
- Storage cabinets with credenza, top of Ebony and faced with leather panel inserts
- Access door to galley

Main Galley

- On deck forward configuration
- Upright Sub-Zero 736TC, lacquer finish door panels
- Sub-Zero side by side 700TC refrigerator freezer drawers
- Meile industrial 5 burner cooktop
- Meile convection oven in galley island
- Meile professional GE7855 dishwasher
- Seimens innowave microwave
- Heat lamps
- Stainless steel counters
- Additional 4 Sub-Zero refrigerator drawers forward
- Dinette starboard for 3-4 people
- Wing door access, port and starboard
- Stainless steel 50/50 sink with disposal
- All metallic silver lacquer finish

- Monitor built in wall
- Over counter storage cabinets
- Full black granite flooring
- Access to crew accommodations

Master Stateroom

- Private office with large windows
- Leather topped desk
- Pocket door leads to Master Stateroom
- King bed, centerline with drawers below in leather bed base
- Ebony night stands with marble inlays
- Artistic C & C 3D ceiling panels
- Aquos flat panel TV with surround sound
- Port side built in couch
- Walk in closet with drawers and full length mirror
- 4 large hull side windows, port and starboard
- Make up vanity and desk to starboard
- Blackout power drapes
- Decorative scones and large ribbon lamps of nickel
- Cantalupi reading lights

Master Stateroom His and Her Heads

His – to Port and features:

- Tecma toilet and bidet
- Granite vanity top with glass bowl sink

Hers – to Starboard and features:

- Tecma toilet and bidet
- Full granite vanity with glass sink
- Ebony wood cabinets with storage
- Teak flooring with marble borders

Heads are divided by frosted glass over Jacuzzi bath tub and shower door

- Mosaic tile shower with rain fall fixtures
- Satin stainless steel hardware throughout

Forward Starboard and Port Guest Staterooms

Forward Starboard and Port Guest Staterooms are symmetrical

- Side by side twin beds with leather wrap
- Pullman bunk for third bed
- Flat panel TV with full functioning AV remote
- Ebony night stand
- Wall mounted Cantalupi reading lights
- Ceiling soffit with decorative C & C 3D wave panel
- Large closet with full length mirror

Forward and Port Guest Stateroom Heads

- Granite vanity top and Ebony cabinetry
- Mosaic tile shower and marble floor
- Teak floor with marble borders

Aft Starboard and Port Guest Staterooms

- Queen bed with leather wrap
- Ebony night stands with lamps
- Large closet with mirrored doors
- Ebony credenza with storage
- Flat panel TV with full function AV remote

Aft Starboard and Port Guest Heads

- Ebony wood cabinetry
- Mosaic backsplash
- Teak floor with marble border
- Oversized shower finished in Mosaic tile

Crew's Quarters

4 Crew cabins

- 3 rooms, double bunks
- 1 room, single captains quarters

2 stacked clothes washer and dryers units

- All rooms have TV monitors

Aft Deck and Main Deck

- Teak decking and stair treads
- Large u-shaped seating arrangement with settee and granite table with four chairs
- Round dining table of Granite with 9 chairs
- Granite topped bar with under counter refrigeration
- 2 televisions mounted port and starboard above side boards
- Full length glass doors to vessel walk around
- Massive sunpad with cushions
- Stairs up to sun deck and down to swim platform
- Passerelle
- Tender garage, hydraulically powered
- Tender handling system
- Custom swim platform with self-deploying swim ladder
- Deck mounted mooring bollards, port and starboard
- Polished 316L stainless steel life rails
- Underwater lights

Sundeck

- New redesigned hardtop with overhead air conditioning and LED lighting with skylights
- Newly added glass panel bulkhead forward with doors to block wind
- Forward of glass bulkhead, port and starboard is a prep/serving station with built in BBQ, sink and storage cabinets
- Port and starboard docking stations with open air double bench seats
- Settee seating port and starboard with Granite tables
- New teak decks
- Port and starboard cinema monitors
- All new full wet bar aft with 4 bar stools
- Large Granite tops with sink, icemaker and refrigeration
- Large Jacuzzi centerline with 4 chaise lounges aft

Fore Deck

- 2 Maxwell VWC8000 vertical windlass
- 2 anchors in side pockets, anchor chain
- 4 deck mounted bollards
- 4 stainless fairleads
- Ship's bell
- 2 water tight hatches to chain lockers
- Bow rail 3162 stainless steel
- Seating area and sunpad

- Crew escape hatch
- Teak decks

Navigational Equipment

- 5X Monitors for helm console
- 1X Band Radar System: Furuno 2117BB/DC with 6.5 ft antenna
- 1X Band Radar System: Furuno 2117BB/DC with 4 ft antenna
- 1X DGPS System: Furuno IMO GP90D system
- 1X AIS System: Simrad AI80 system
- 1X Chart plotter System: Admiral Marine system
- 1X Network Weatherfax/Navtex System: Furuno Network Fax
- 1X GMDSS System: Furuno RC1815 A3 GMDSS without console
- VHF transceivers
- MF/HF transceiver
- Inmarsat C transceiver
- 1X GMDSS Lifeboat Radio System: ICOM GM1500 radios
- 1X VHF Communications System: Simrad RS 87 Black Box VHF radios
- 1X UHF Handheld Radio Package: Kenwood portable UHF radios
- 1X Instrument System: Airmar
- 1X Satellite Communication System; SeaTel Model 4006 system with internet capability
- 1X Satellite Television System: SeaTel model 3004 systems
- European LNBS
- 1X Autopilot/Gyro System: Simrad AP9MK3
- Simrad GC80 Exp. System
- 1X Ships Computer System: Lantic Entertainment System YMS-PC 19-2U computer with Software

Helm Area

- Raised pilot house
- Observation loung, full leather with table
- Captains office, communication desk
- 4 Stidd helm chairs, crocodile leather
- All necessary engine controls to operate vessel
- Carbon fiber like leather console
- Stairs leading to sundeck
- Port and starboard docking stations, located outside over raised pilothouse

Engine Room

- Main engines: 2 x MTU 16V4000, 2,720kW (3,650 BHP) each
- Gearbox: Twin Disc MG6124SC
- Shafts: Temet 25 stainless steel
- Steering gear: Hydraulic
- Fuel capacity: 10,831 gallons
- Stabilizers: Quantum Marine, 2 fin
- Second Stabilizer System: 3X M26000 Seakeepers Gyro stabilizers, zero speed
- Windlass: 2 x Maxwell VWC 8000
- Bow thruster: Quantum Marine, 100 hp
- Watermaker: 2, 1800gpd
- Custom stairs down from main deck to engine room
- New, all stainless steel oversized work bench with Craftsman tool drawers
- MTU/Blueline engine controls and monitoring
- Fuel tanks are integral
- Alfa Laval fuel water separator
- Lube oil, waste lube oil system
- Bilge and fire system manifold
- Bilge/fire pumps, two self-priming
- Water heater 100 gallon with circulation pump
- Grey and black water tank, integral 1070 gallons
- Fire system for accommodations
- Engine room fire system
- Engine room ventilation system
- Fresh make up air system

Electrical System

- Includes power management, seamless transfer circuit breakers, metering, ground fault indication
- 50 hertz system with three phase and single phase voltage
- Shore power convertor ASea Power 60 hertz/50 hertz
- (2) Kilopak 77kw generators
- Glendinning 100' shore power cable
- Emergency lighting
- Alarm system with monitors for captain and engineer, monitors bilge, fire and tank capacities

Исключения

При продаже яхты исключаются личные вещи владельца.

Отказ от ответственности

Компания предоставляет описание судна или яхты добросовестно, но не может гарантировать точность этой информации, а также не ручается за техническое состояние. Покупатель должен проинструктировать своих агентов или оценщиков исследовать представленную информацию более подробно, по собственному желанию. Продажа судна или яхты, изменение цены или снятие с продажи будет происходить без предварительного уведомления.

ФОТОГРАФИИ

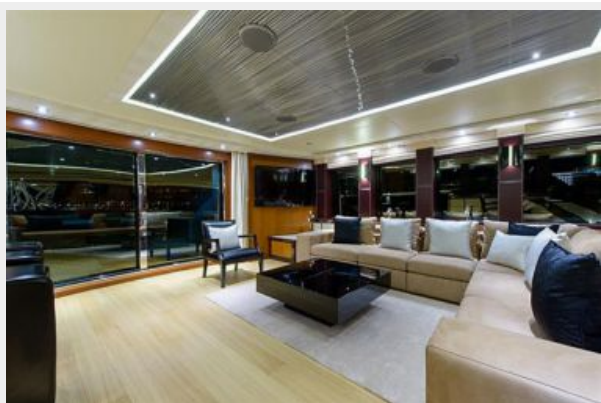
Salon



Salon



Salon



Salon



Salon



Dining



Dining



Bar



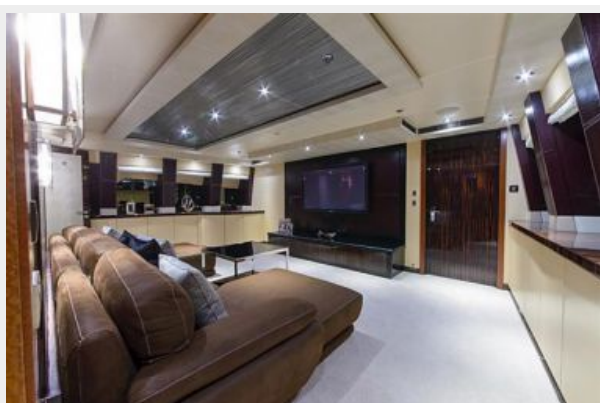
Bar



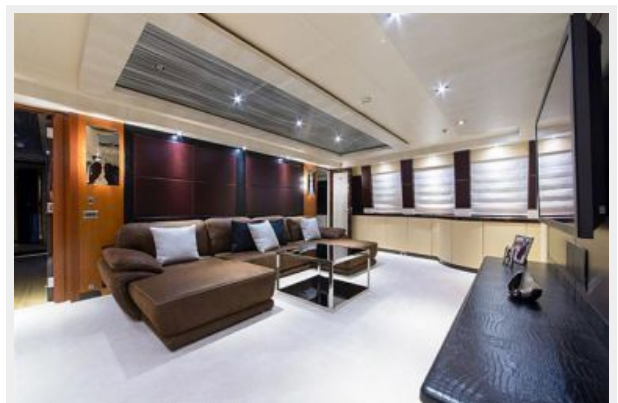
Theater Room



Theater Room



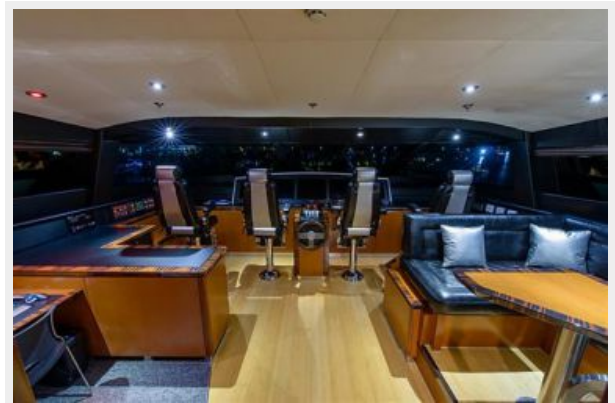
Theater Room



Theater Room Head



Helm



Helm



Helm



Master Stateroom



Master Stateroom



Master Stateroom



Master Stateroom



Master Stateroom

Master Stateroom



Master Stateroom Head



Master Stateroom Head



Master Stateroom Head



Master Stateroom Head



Master Stateroom Head



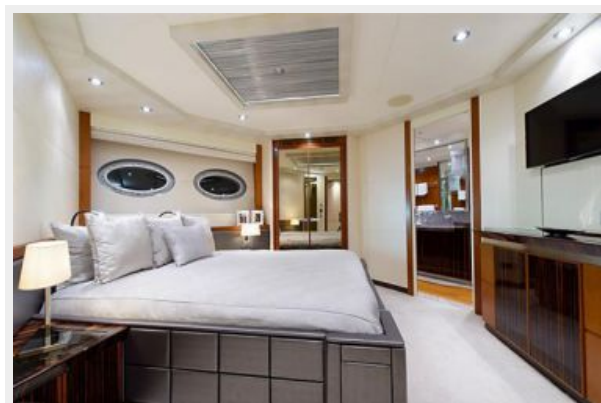
Master Stateroom Head



Master Stateroom Office



Starboard Guest Stateroom



Starboard Guest Stateroom Head



Port Guest Stateroom



Port Guest Stateroom Head



Port Guest Twin Stateroom



Port Guest Twin Stateroom



Port Guest Twin Stateroom



Port Guest Twin Stateroom Head



Port Guest Twin Stateroom



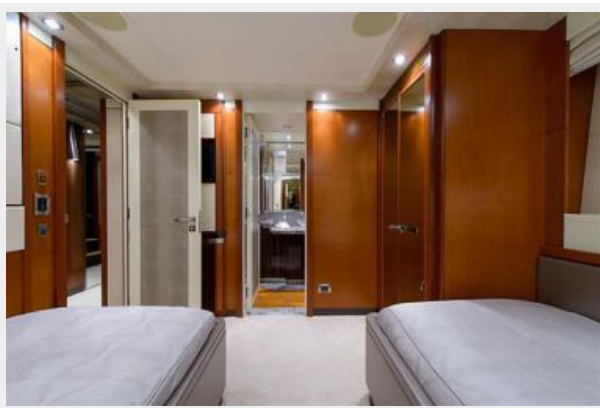
Starboard Guest Twin Stateroom



Starboard Guest Twin Stateroom



Starboard Guest Twin Stateroom



Starboard Guest Twin Stateroom Head



Starboard Guest Twin Stateroom Head



Upper Deck



Upper Deck



Upper Deck



Upper Deck



Upper Deck



Upper Deck



Upper Deck



Upper Deck



Upper Deck



Upper Deck



Upper Deck



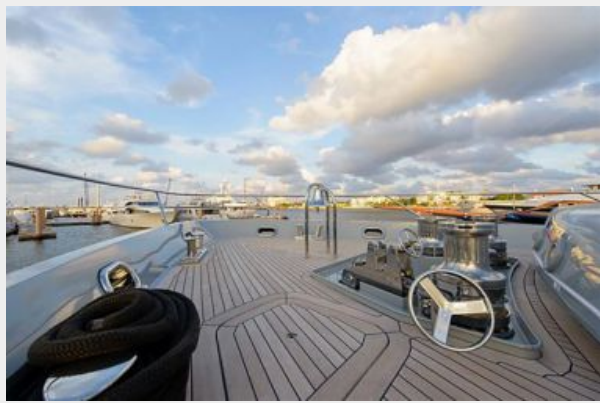
Bow



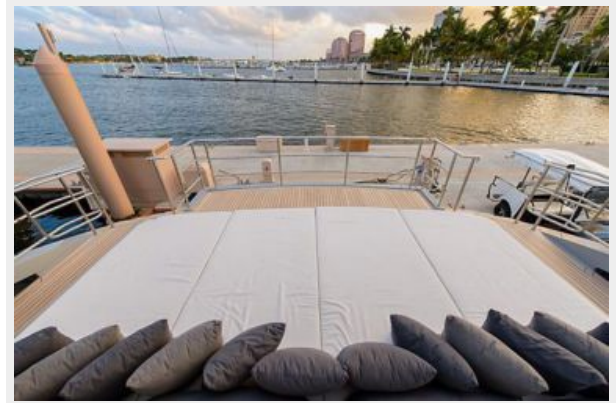
Bow



Bow



Aft Deck



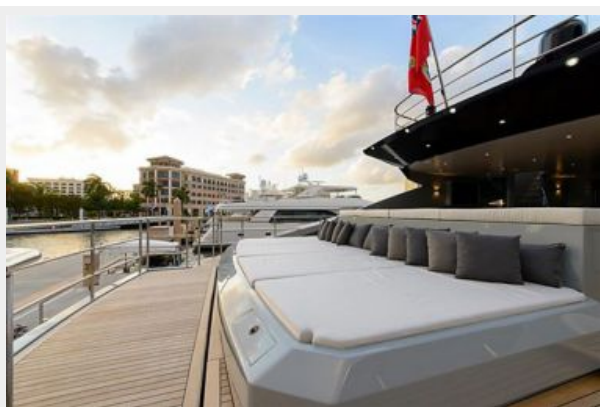
Aft Deck



Aft Deck



Aft Deck



Aft Deck



Aft Deck



Aft Deck



Aft Deck



Aft Deck



Aft Deck



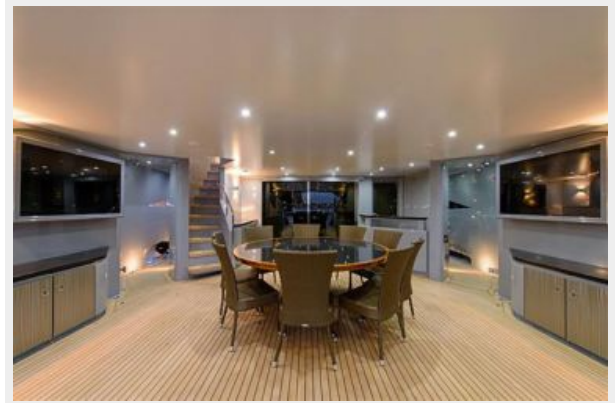
Aft Deck



Aft Deck



Aft Deck



Aft Deck



Aft Deck



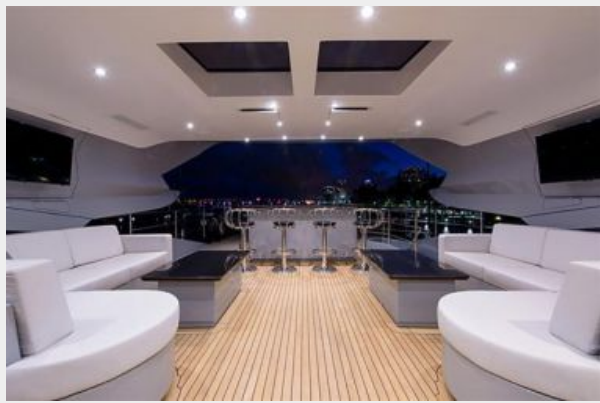
Aft Deck



Aft Deck



Aft Deck



Aft Deck



Aft Deck



Aft Deck



Aft Deck



Bow





КОНТАКТЫ

Андрей Шестаков (Andrey Shestakov) – ведущий яхтенный брокер отдела продаж яхт и судов компании Shestakov Yacht Sales Inc. Официальный представитель Shestakov Yacht Sales Inc. для русскоговорящих клиентов в центральном офисе компании в Майами/Форт Лодердейл/Флорида/США.

Контактная информация

Email: andrey@shestakovyachtsales.com

Web: shestakovyachtsales.com

Телефоны

Краснодарский край: **+7(918)465-66-44**

США, Майами, Флорида: **+1(954)274-4435**

Время работы

Понедельник – Суббота: **9:00 - 21:00**
EDT

Воскресенье: **Закрето**

Адрес



Harbour Towne Marina, 850 NE 3rd St,
STE 213, Dania, FL 33004