

NO NAME — AZIMUT



Builder: [AZIMUT](#)

LOA: 85' 0" (25.91m)

Year Built: 2007

Model: Motor Yacht

Price: PRICE ON APPLICATION

Location: United States

Our experienced yacht broker, Andrey Shestakov, will help you choose and buy a yacht that best suits your needs **NO NAME — AZIMUT** from our catalogue. Presently, at Shestakov Yacht Sales Inc., we have a wide variety of yachts available on our sale's list. We also work in close contact with all the big yacht manufacturers from all over the world.

If you would like to buy a yacht **NO NAME — AZIMUT** or would like help answering any questions concerning purchasing, selling or chartering a yacht, please call **+1(954)274-4435**

TABLE OF CONTENTS

TABLE OF CONTENTS	2
SPECIFICATIONS	4
Basic Information	4
Dimensions	4
Speed, Capacities and Weight	4
Accommodations	4
Hull and Deck Information	4
Engine Information	4
DETAILED INFORMATION	5
Flybridge Equipment	5
Pilothouse	5
Cockpit & Main Level Exterior	5
Lower Helm Station	6
Salon / Dining Area	6
Galley Features	6
Day Head	7
Master Stateroom	7
Port Guest Stateroom	7
VIP Stateroom	7
Starboard Guest Stateroom	7
Systems & Machinery	8
Electronics	8
Disclaimer	9
Exclusions	9
Disclaimer	9
PHOTOS	10
CONTACTS	22
Contact details	22

Telephones	22
Office hours	22
Address	22

SPECIFICATIONS

Basic Information

Category: Motor Yacht

Sub Category: Flybridge

Model Year: 2007

Year Built: 2007

Country: United States

Dimensions

LOA: 85' 0" (25.91m)

Speed, Capacities and Weight

Water Capacity: 220 Gallons

Holding Tank: 90 Gallons

Fuel Capacity: 2400 Gallons

Accommodations

Total Cabins: 4

Total Heads: 5

Hull and Deck Information

Hull Material: Fiberglass

Engine Information

Engines: 2

Manufacturer: MTU

Model: 12V2000

Engine Type: Inboard

Fuel Type: Diesel

DETAILED INFORMATION

Flybridge Equipment

- Custom Soft / Hard Top enclosure
- EZ2CY & Hard Glass enclosure w/ removable sections
- Entertainment Center: LG 37" TV, wet bar w Electric Grill,
- Ice Maker, Refrigerator
- Clarion AM/FM CD w/ amp, sub & 8 speakers
- Teak Forward Flooring
- Custom S.S. Railings
- Windscreen w/ S.S. frame
- Custom Gloss Teak table
- Sun Bed
- Dual Entrance to cockpit & salon

Pilothouse

- Lower Helm station
- Circular Leather seating & Table
- Control Panels
- Immense storage
- LED lighting

Cockpit & Main Level Exterior

- Teak Cap Rails
- Aft Boarding Gates
- Forward Boarding Gates
- S.S. cleats
- Midship S.S. cleats
- (2) Cockpit Windlass
- Teak in cockpit, swim platform, stairs & side decks
- Custom Teak Gloss table
- Side Chairs – S.S. & teak
- Commercial Refrigerator
- Passarelle
- Bow Sunpad
- Bow Seating area

Lower Helm Station

- Raymarine E120
- 12" VEI Monitor w/ PC running Nobeltec software
- Raymarine Autopilot
- Raymarine 240 VHF
- Raymarine Rudder Indicator
- Compass
- Trim Tab indicators
- ACR Spotlight Control
- MTU engine displays
- BCS Bow Thruster
- TRAC Stabilizer panel
- Bezenzoni Helm Seat

Salon / Dinning Area

- Electric S.S. salon entrance doors
- LED lighting
- Leather couch w/ 2 arm chairs
- Hi-Lo 42" TV w/ surround sound
- Onkyo receiver, DVD player, amplifier, Sirius Sat Radio
- Coffee Table
- Stairs leading to Fly
- Immense storage
- Custom Dining table w/ seating for 6
- LED lighting

Galley Features

- Commercial Galley
- Open or Closed galley via doors
- Granite counter tops
- Commercial S.S. refrigerators & freezers
- Miele 4 burner cook top
- G.E. Profile Oven
- Miele Dishwasher
- Trash Compactor
- Double S.S. Sink
- Wood Floors
- LED lighting

Day Head

- Marble Floor
- VacuFlush toilet
- LED lighting

Master Stateroom

- Queen size bed
- Walk in Closet
- Chaise style sofa
- Vanity w/ Storage
- Full Audio Visual Package
- Safe
- LED lighting
- Master Head featuring: Marble floors & countertops,
- VacuFlush toilet & Bidet, Oversized shower w/ body jets

Port Guest Stateroom

- Two Single Beds
- Ample Closets & Storage
- Full Audio Visual Package
- LED lighting
- VIP Head featuring: Marble floors & countertops,
- VacuFlush toilet, Shower

VIP Stateroom

- Queen size bed
- Ample Closets & Storage
- Vanity w/ Storage
- Full Audio Visual Package
- LED lighting
- VIP Head featuring: Marble floors & countertops,
- VacuFlush toilet, Shower

Starboard Guest Stateroom

- Two Single Beds

- Additional Pullman Bed
- Ample Closets & Storage
- Full Audio Visual Package
- LED lighting
- VIP Head featuring: Marble floors & countertops,
- VacuFlush toilet, Shower

Systems & Machinery

- US Specifications Vessel w/ 60 HZ power
- TRAC Stabilizers
- Cruiseair Air Cond – 5 compressors & 2 sea water pumps
- Hydraulic Bow Thruster
- Main Salon Electric Door
- Glendenning Cablemasters
- Electric transom Steps
- 5 Blade Propellers
- Lofrans Wildcat Windlass w/ approx.. 300' of chain
- (2) Lofrans Docking windlass in cockpit
- Hydraulic Steering
- Hydraulic Passarelle
- Hydraulic Garage
- Electric winch in Garage for tender launch / retrieval
- Fire Fighting System
- Oil Changing System
- Fuel Transfer System
- Dripless Shaft seals
- Multiple Battery chargers
- Miele Washer / Dryer
- Central Vacuum
- WaterMaker – Village Marine

Electronics

- Vessel is equipped with WiFi
- Sirius Sat Radio
- Sea Tel Sat TV
- KVH TracPhone Sat Com
- Panasonic Intercom system
- Upper Helm:
- Custom Hi-Gloss Teak Dash
- Garmin GPS 8212

- Garmin Autopilot
- Raymarine 240 VHF
- Raymarine Rudder Indicator
- Compass
- Trim Tab indicators
- ACR Spotlight Control
- BCS Bow Thruster

Disclaimer

The Company offers the details of this vessel in good faith but cannot guarantee or warrant the accuracy of this information nor warrant the condition of the vessel. A buyer should instruct his agents, or his surveyors, to investigate such details as the buyer desires validated. This vessel is offered subject to prior sale, price change, or withdrawal without notice.

Exclusions

Owner's personal belongings.

Disclaimer

The Company offers the details of this vessel or yacht in good faith but cannot guarantee or warrant the accuracy of this information nor warrant the condition of the vessel. A buyer should instruct his representatives, agents, or his surveyors, to investigate such details as the buyer desires validated. This vessel or yacht is offered subject to prior sale, price change, or withdrawal without notice.

PHOTOS







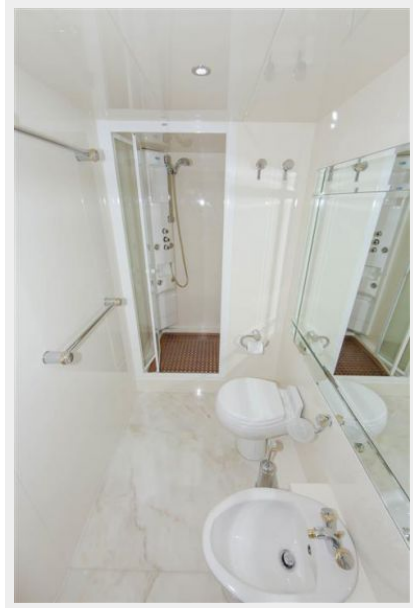


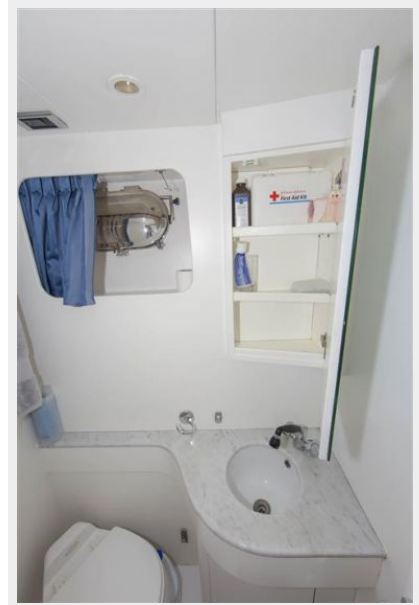
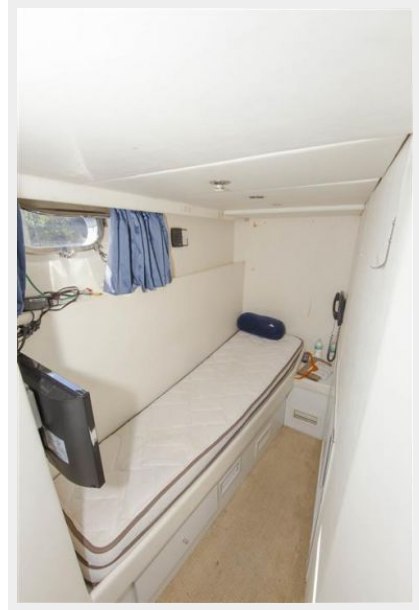
















CONTACTS

Andrey Shestakov, leading yacht broker of the sales department of Shestakov Yacht Sales Inc. Shestakov Yacht Sales Inc., the official representative of the Miami/Fort Lauderdale FL headquarters.

Contact details

Email: andrey@shestakovyachtsales.com

Web: shestakovyachtsales.com/en/

Telephones

USA: +1(954)274-4435

Office hours

Monday – Saturday: **9:00 - 21:00** EDT

Sunday: **closed**

Address



Harbour Towne Marina, 850 NE 3rd St,
STE 213, Dania, FL 33004