

## NO NAME — AZIMUT



**Builder:** [AZIMUT](#)

**Year Built:** 2009

**Model:** Motor Yacht

**Price:** PRICE ON APPLICATION

**Location:** United States

**LOA:** 68' 0" (20.73m)

**Beam:** 17' 1" (5.21m)

**Max Draft:** 5' 2" (1.57m)

Our experienced yacht broker, Andrey Shestakov, will help you choose and buy a yacht that best suits your needs **NO NAME — AZIMUT** from our catalogue. Presently, at Shestakov Yacht Sales Inc., we have a wide variety of yachts available on our sale's list. We also work in close contact with all the big yacht manufacturers from all over the world.

If you would like to buy a yacht **NO NAME — AZIMUT** or would like help answering any questions concerning purchasing, selling or chartering a yacht, please call **+1(954)274-4435**

---

# TABLE OF CONTENTS

---

TABLE OF CONTENTS	2
SPECIFICATIONS	4
Overview	4
Basic Information	4
Dimensions	4
Speed, Capacities and Weight	4
Accommodations	4
Hull and Deck Information	5
Engine Information	5
DETAILED INFORMATION	6
Accommodations, Furnishing & Layout	6
Salon Features	6
Master Stateroom	6
Galley Features	6
VIP Stateroom	7
Deck Equipment	7
Electrical & Navigation Equipment	7
Electrical Systems	8
Mechanical & Engine Equipment	8
Disclaimer	8
Exclusions	8
Disclaimer	9
PHOTOS	10
CONTACTS	19
Contact details	19
Telephones	19
Office hours	19
Address	19



---

# SPECIFICATIONS

---

## Overview

---

OUR TRADE, HER OWNER HAS MOVED UP

- Very lightly used.
- Beds barely slept in.
- Galley barely used.
- Joystick docking.
- Watermaker
- Incredible custom audio throughout.
- RCI controlled A/V system.
- GOST alarm system.

Please come see her at the #1 Azimut store in the world located in Pompano Beach, Florida.

## Basic Information

---

**Category:** Motor Yacht

**Model Year:** 2009

**Year Built:** 2009

**Country:** United States

## Dimensions

---

**LOA:** 68' 0" (20.73m)

**Beam:** 17' 1" (5.21m)

**Max Draft:** 5' 2" (1.57m)

## Speed, Capacities and Weight

---

**Water Capacity:** 251 Gallons

**Fuel Capacity:** 845 Gallons

## Accommodations

---

**Total Cabins:** 3

**Total Heads:** 3

---

## Hull and Deck Information

---

**Hull Material:** Fiberglass

---

## Engine Information

---

**Engines:** 2

**Manufacturer:** MAN

**Engine Type:** Inboard

**Fuel Type:** Diesel

---

# DETAILED INFORMATION

---

---

## Accommodations, Furnishing & Layout

---

- Sleeps: 6
- Number of owner & guest staterooms on vessel (excluding crew): 3
- Admidship Master stateroom includes: King size bed; head with shower.
- Guest heads: 3 Guest showers: 3
- Crew shower
- Carpeting
- Drapes
- Furniture: Chair, Table and Sofa

---

## Salon Features

---

- Custom wood floor by Azimut
- Sony Bravia 40" in. LCD TV
- Bose Surround Sound
- RCI A/V System
- Direct TV

---

## Master Stateroom

---

- Full king bed/ wrap around
- Breakfast table
- Nieri upholstery
- Samsung 40" LCD TV
- Direct TV
- LG blue ray/ DVD player

---

## Galley Features

---

- Dishwasher
- Galley: Down
- Refrigeration: Coolmate
- Stove Burners: 4 Mfg/Mdl Schott ceran
- Water Heater
- Com-o-matic 6200 washer & dryer
- Daewoo Microwave
- Rex dishwasher

---

## VIP Stateroom

---

- Queen Berth
- Direct TV
- 23" Sharp LCD TV
- Custom upholstery

---

## Deck Equipment

---

- Anchor w/lines
- Bow pulpit & Rails
- Cockpit Awning
- Coast Guard Approved safety package
- Deck Material: Teak
- Deck wash down system
- Fender and Lines
- Navigation Light
- Spreader lights
- Windlass: Mfg/Mdl Quick electric
- Windshield washer & Wipers
- Jabsco search light
- 6 JL audio 6.5 speakers
- 10" in. JL audio subwoofer
- Cockpit sink
- Hydraulic swim platform
- Custom cockpit shade
- Gaggenau grill
- Vitrifrigo refrigerator
- Opacmare passarelle

---

## Electrical & Navigation Equipment

---

- Auto pilot Raymarine
- 2 Raymarine 240 VHF
- Raymarine E 120
- Raymarine E 80
- Ritchie Compass
- Sea Energy Joystick
- Quick anchor display
- Raymarine Tri-Data
- Trim Tab Indicator

---

## Electrical Systems

---

- Batteries: 14
- Battery parallel switch
- Battery charger ( constavolt): Auto
- Dockside Electrical cable
- Generator ( Primary ): Kholer KW 20 Hours: 1484
- Electrical System: 12V, 24V, 110V
- Glending cable master
- MDP Battery charger
- Kholer sound shield
- Dolphin 24 volt/ 80 AMP
- Dolphin 12 volt/ 10 AMP

---

## Mechanical & Engine Equipment

---

- Air conditioner. Mfg Cruisair
- Bilge Blower : 2 Bilge Pumps: 3 Auto
- Engine Alarm
- Emergency Engine stop
- Fire Extinguishing System: Halon; Auto
- Fresh water cooling system
- Fuel shut off valve
- Head Types: holding; electric
- Steering: Hydrl
- Transmission: ZF V- drive 1.97.1
- Watermarker
- Dual Racor filter system

---

## Disclaimer

---

The Company offers the details of this vessel in good faith but cannot guarantee or warrant the accuracy of this information nor warrant the condition of the vessel. A buyer should instruct his agents, or his surveyors, to investigate such details as the buyer desires validated. This vessel is offered subject to prior sale, price change, or withdrawal without notice.

---

## Exclusions

---

Owner's personal belongings.



---

## Disclaimer

---

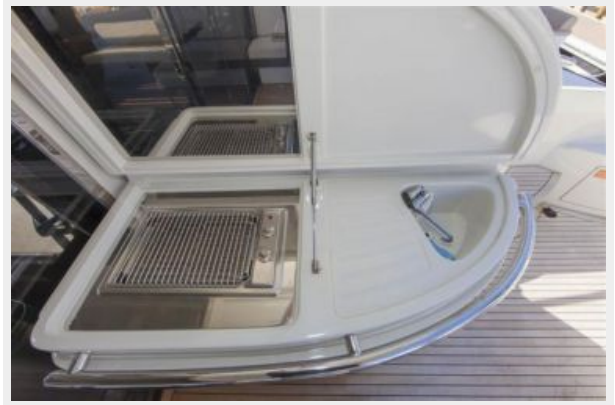
The Company offers the details of this vessel or yacht in good faith but cannot guarantee or warrant the accuracy of this information nor warrant the condition of the vessel. A buyer should instruct his representatives, agents, or his surveyors, to investigate such details as the buyer desires validated. This vessel or yacht is offered subject to prior sale, price change, or withdrawal without notice.

# PHOTOS



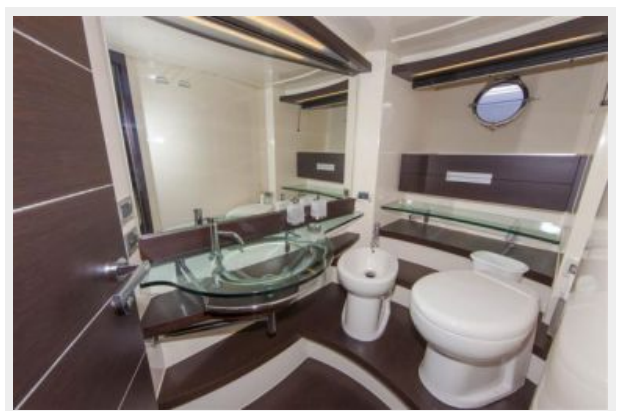
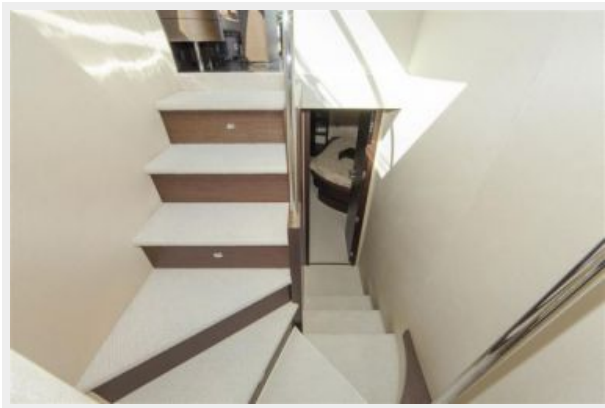








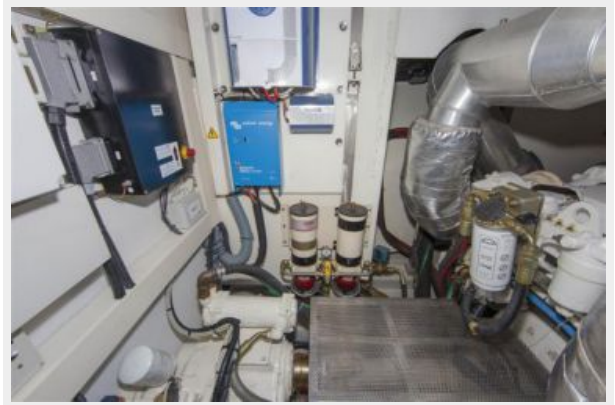














---

# CONTACTS

---

Andrey Shestakov, leading yacht broker of the sales department of Shestakov Yacht Sales Inc. Shestakov Yacht Sales Inc., the official representative of the Miami/Fort Lauderdale FL headquarters.

---

## Contact details

---

Email: [andrey@shestakovyachtsales.com](mailto:andrey@shestakovyachtsales.com)

Web: [shestakovyachtsales.com/en/](http://shestakovyachtsales.com/en/)

---

## Telephones

---

USA: +1(954)274-4435

---

## Office hours

---

Monday – Saturday: **9:00 - 21:00** EDT

Sunday: **closed**

---

## Address

---



Harbour Towne Marina, 850 NE 3rd St,  
STE 213, Dania, FL 33004