

## GET REEL — PURSUIT



**Builder:** PURSUIT

**Year Built:** 2001

**Model:** Center Console

**Price:** PRICE ON APPLICATION

**Location:** United States

**LOA:** 32' 8" (9.96m)

**Beam:** 10' 6" (3.20m)

**Max Draft:** 3' 3" (0.99m)

Our experienced yacht broker, Andrey Shestakov, will help you choose and buy a yacht that best suits your needs **Get Reel — PURSUIT** from our catalogue. Presently, at Shestakov Yacht Sales Inc., we have a wide variety of yachts available on our sale's list. We also work in close contact with all the big yacht manufacturers from all over the world.

If you would like to buy a yacht **Get Reel — PURSUIT** or would like help answering any questions concerning purchasing, selling or chartering a yacht, please call **+1(954)274-4435**

---

# TABLE OF CONTENTS

---

TABLE OF CONTENTS	2
SPECIFICATIONS	3
Overview	3
Basic Information	3
Dimensions	3
Speed, Capacities and Weight	3
Accommodations	3
Hull and Deck Information	3
Engine Information	4
DETAILED INFORMATION	5
Broker Comments & Service Updates	5
Electrical Equipment	5
Cockpit Helm & Electronics	5
Mechanical & Electrical Systems	5
Head & Shower Features	6
Additional Equipment	6
Exclusions	6
Disclaimer	6
PHOTOS	7
CONTACTS	16
Contact details	16
Telephones	16
Office hours	16
Address	16

---

# SPECIFICATIONS

---

## Overview

---

This Pursuit 3070 Center Console is a tried and true fishing machine. Powered by twin Yamaha OX66 250 hp outboards that had complete annual service on engines and lower unit in September 2014. The 3070 CC carries more beam than many other 30-foot center consoles and this boat offers an extensive list of custom options.

Make an appointment to see Get Reel today!

## Basic Information

---

**Category:** Center Console

**Model Year:** 2001

**Year Built:** 2001

**Country:** United States

## Dimensions

---

**LOA:** 32' 8" (9.96m)

**Beam:** 10' 6" (3.20m)

**Max Draft:** 3' 3" (0.99m)

**Clearance:** 9' 6" (2.90m)

## Speed, Capacities and Weight

---

**Displacement:** 8550 Pounds

**Water Capacity:** 30 Gallons

**Holding Tank:** 18 Gallons

**Fuel Capacity:** 310 Gallons

## Accommodations

---

**Total Heads:** 1

## Hull and Deck Information

---

**Hull Material:** Fiberglass

---

## Engine Information

---

**Engines:** 2

**Manufacturer:** Yamaha

**Model:** OX66

**Engine Type:** Outboard

**Fuel Type:** Gas/Petrol

---

## DETAILED INFORMATION

---

### Broker Comments & Service Updates

---

Complete annual service completed Sept 2014 on both engines

### Electrical Equipment

---

- Clarion M5675 stereo and CD player
- Shore Power inlet -- Smart Plug

### Cockpit Helm & Electronics

---

- Furuno 12" with radar 72 mile w/NavNat latest chip
- Simrad NSS-8" Touch screen with side scan
- Simrad Auto Pilot
- ICOM IC-M504 VHF
- 8' VHF antenna, mounted on hardtop
- ACR-RCL-100 remote controlled search light
- Ritchie Compass

### Mechanical & Electrical Systems

---

- 110V/60 cycle dockside power, 3.6 KVA Isolation Transformer and 40 amp battery charger
- Lewmar windlass with anchor
- Four (4) new AGM batteries 2013 and 2014
- Twin LED spreader lights
- One (1) 30-amp 25' dockside power cord with Smart Plug
- Yamaha fuel management system
- Bennett electric trim tabs
- Two (2) Racor fuel filters / water separators
- Four (4) bank battery system w/Pursuit custom master circuit breaker switch panel for 12V and 110V circuits
- Teleflex Sea Star II dual cylinder hydraulic steering w/tilt sport helm
- 16" Edison comfort grip stainless steel steering wheel
- Electric helm seat
- Down rigger wired plug on starboard side
- Rupp outriggers
- Aux 120 gal bait box with high flow raw water pump

---

## Head & Shower Features

---

- Fiberglass head/shower with sump pump
- Shower sprayer
- Sink
- Storage cabinet
- Vacu Flush head with 18 gallon holding tank, macerator and teak seat grate
- Vanity mirror
- 110V outlet GFI protected
- One (1) 12V accent light with switch

---

## Additional Equipment

---

- Two (2) Taco outriggers
- EPIRB
- Stainless steel cleats
- Under helm tackle storage with 3 drawers and 5 trays
- Three (3) Transom bait self-draining drawers
- Fish box with 12VDC discharge pump out
- Eight (8) under gunnel rod storage and 6 lockable
- Four (4) heavy duty stainless steel rod holders glassed in gunnels
- Six (6) rod holders on arch and hard top
- Raw water wash down system
- Lighted 32 gal recirculating live well with bottom drain plug
- Three (3) bilge pumps; two (2) 1500 - aft, one (1) 100 - fwd
- USCG and international lighting - P & S bow lights - LED
- Three (3) fire extinguishers
- Two (2) fenders and dock lines

---

## Exclusions

---

Owner's personal belongings.

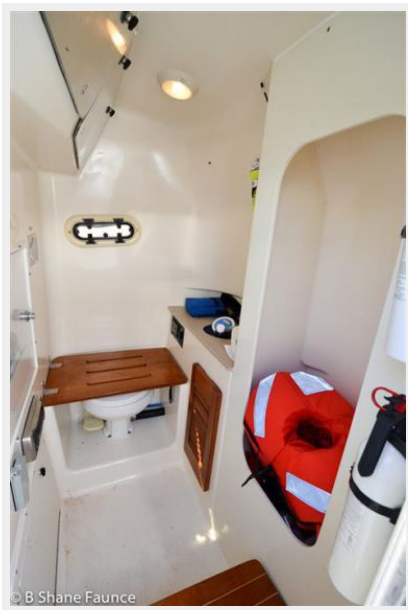
---

## Disclaimer

---

The Company offers the details of this vessel or yacht in good faith but cannot guarantee or warrant the accuracy of this information nor warrant the condition of the vessel. A buyer should instruct his representatives, agents, or his surveyors, to investigate such details as the buyer desires validated. This vessel or yacht is offered subject to prior sale, price change, or withdrawal without notice.

# PHOTOS

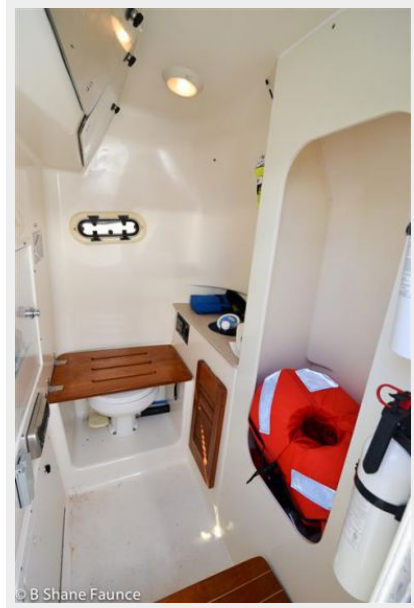




















---

# CONTACTS

---

Andrey Shestakov, leading yacht broker of the sales department of Shestakov Yacht Sales Inc. Shestakov Yacht Sales Inc., the official representative of the Miami/Fort Lauderdale FL headquarters.

---

## Contact details

---

Email: **andrey@shestakovyachtsales.com**

Web: [shestakovyachtsales.com/en/](http://shestakovyachtsales.com/en/)

---

## Telephones

---

USA: +1(954)274-4435

---

## Office hours

---

Monday – Saturday: **9:00 - 21:00** EDT

Sunday: **closed**

---

## Address

---



Harbour Towne Marina, 850 NE 3rd St,  
STE 213, Dania, FL 33004