

WINDHORSE — NAJAD



Builder: [NAJAD](#)

Year Built: 2005

Model: Cruising Sailboat

Price: PRICE ON APPLICATION

Location: United States

LOA: 37' 10" (11.53m)

Beam: 12' 0" (3.66m)

Min Draft: 6' 3" (1.91m)

Our experienced yacht broker, Andrey Shestakov, will help you choose and buy a yacht that best suits your needs **WINDHORSE — NAJAD** from our catalogue. Presently, at Shestakov Yacht Sales Inc., we have a wide variety of yachts available on our sale's list. We also work in close contact with all the big yacht manufacturers from all over the world.

If you would like to buy a yacht **WINDHORSE — NAJAD** or would like help answering any questions concerning purchasing, selling or chartering a yacht, please call **+1(954)274-4435**

TABLE OF CONTENTS

TABLE OF CONTENTS	2
SPECIFICATIONS	4
Overview	4
Basic Information	4
Dimensions	4
Speed, Capacities and Weight	4
Accommodations	4
Hull and Deck Information	5
Engine Information	5
DETAILED INFORMATION	6
Broker's Comments	6
Construction	6
Machinery	6
Electrical Systems	7
Plumbing Systems	8
Tankage	8
Navigation Equipment	9
Domestic Equipment	10
Accommodation	11
Deck Equipment	11
Exclusions	14
Disclaimer	14
PHOTOS	15
CONTACTS	20
Contact details	20
Telephones	20
Office hours	20
Address	20

SPECIFICATIONS

Overview

Beautifully spec'ed and well presented example of the the very popular Najad 380.

Basic Information

Category: Cruising Sailboat

Sub Category: Center Cockpit

Model Year: 2005

Year Built: 2005

Country: United States

Dimensions

LOA: 37' 10" (11.53m)

LWL: 32' 6" (9.91m)

Beam: 12' 0" (3.66m)

Min Draft: 6' 3" (1.91m)

Speed, Capacities and Weight

Displacement: 18258.68453884 Pounds

Water Capacity: 110.423917736 Gallons

Fuel Capacity: 85.063400744 Gallons

Accommodations

Total Cabins: 2

Total Berths: 5

Total Heads: 1

Hull and Deck Information

Hull Material: GRP

Deck Material: Teak

Hull Designer: Judel/Vrolijk

Engine Information

Engines: 1

Manufacturer: Yanmar

Model: 4JH3 HT(B)E

Engine Type: Inboard

Fuel Type: Diesel

DETAILED INFORMATION

Broker's Comments

Highly specified Najad 380 with bow thruster, in-mast furling, electric winches, windlass, Raymarine ST290 electronics, Raymarine radar, plus laptop connection. Autopilot. Interior with upgrades including double berth and settee in owners cabin aft, individual chairs on starboard side of saloon, fridge and freezer, Corian surfaces, stereo with 6 x speakers, wall mounted shower and diesel heating. Featured and tested in October 2005 issue of 'sailing' magazine.

Lightly used and only for sale due to owners change of plans.

Construction

Hull, Deck & Superstructure Construction:

- White gelcoat hull, with blue stripes.
- Teak decks, and in cockpit, teak toerail and teak on cabin top.
- Gloss varnished teak under windshield.
- Stainless steel rubbing strip.
- Stainless steel protection at cleats.
- Toughened glass windshield, with handrails; opening middle section.
- Blue bottom paint.
- 2 x Coats of epoxy barrier coat.

Keel & Rudder:

- Lead keel.
- Semi skeg hung rudder.

Machinery

Engine & Gearboxes:

- 1 x Yanmar 4JH3 HT(B)E 54hp diesel engine.
- Racar 500ma fuel water separator (2013).

Maintenance & Performance:

- Engine Hours: c. 500.

Propulsion & Steering:

- Flex-o-fold 3-bladed propeller on shaft drive.
- Cutlass bearing (2013).
- Wheel steering.
- Leather covered wheel.
- Bowthruster.
- Emergency tiller.
- Dripless stuffing box.

Electrical Systems

Voltage Systems:

- 12v and 110v power sockets.
- 4 x 110v outlets.
- 12v outlets.

Battery Banks:

- 12v Ships service, AGM (2013).
- 12v Engine start battery, AGM (2013).

Battery Chargers:

- Battery charger/inverter 2kW.
- Duo charger (2013).

Alternators:

- Balmar 140 amp alternator (2013).

Shore Power:

- 110v shore power system.

Other Electrical:

- Xantrex Link pro battery monitor (2013).
- ARS multistage voltage regulator (2013).

Plumbing Systems

Fresh Water & Water Heating System:

- Pressurised hot and cold water, with manual back up pump.
- Seagull water filter (2013).
- 40 litre hot water tank.

Bilge Pumps:

- Electrical bilge pump.
- Auto-electric bilge pump.
- Manual bilge pump.
- Bilge water alarm.

Tankage

Fuel:

- Total capacity of 322 litres (71 gallons).
- Fuel tank cleaned (2013).

Fresh water:

- Total capacity of 418 litres (92 gallons).

Grey/Blackwater holding tanks:

- Total capacity of 54 litres (12 gallons).

Gas:

- 3 x 10 pound aluminium propane tanks.

Navigation Equipment

- Raymarine ST6001 autopilot.
- Raymarine ST290 base pack.
- Raymarine ST290 wind.
- Raymarine ST290 graphic display.
- Raymarine MOB button.
- Raymarine remote autopilot controller.
- Raymarine Raytech computer interface.
- Raymarine LC80 color plotter.
- Raymarine 2kW radar.
- Raymarine 215 dual station VHF.
- Cockpit VHF handset.
- Simrad AIS (2013).

- CD/AM/FM with iPod connection; has 8 speakers (2013).
- VHF/AM/FM antenna on masthead.
- Echomaster radar reflector (2013).
- Windex.

Domestic Equipment

Galley:

- 100 litre 12v refrigeration.
- 40 litre freezer.
- Smev 2-burner stove with oven and grill; gas solenoid.
- Double stainless steel sink.
- Microwave oven.

Heads/Showers:

- 1 x WC.
- 1 x Shower.
- Swim platform shower.

Heating & Ventilation:

- Eberspacher diesel heating in all cabins.
- Diesel heater outlet in cockpit.
- 6 x Cabin fans.

Entertainment:

- 13" TV/DVD in aft cabin.

Lighting:

- Navigation lights.
- Anchor light.
- Deck light.
- Engine room light.
- Chart light under windscreen.

Accommodation

Summary of Accommodation:

- V-berth cabin forward, hanging locker, cupboards, seat, opening ports and hatch. Storage under v-berth.
- Settee to port of saloon, with removable backs for wider berth and 2 x individual seats on starboard side. Drop leaf table, lockers, wine storage in table and bookshelves.
- Lift up lid for chart table, drawers under seat, circuit breaker panel, chart light, removable laptop compartment, with 12v and 110v power sockets.
- Long galley in passageway to aft cabin. Ampe cupboards and storage. Corian counter tops.
- To heads compartment – Corian counter top and sink, mixer tap, with handheld shower, wet locker, teak shower floor, shower drain pump, wall mounted shower mixer valve and adjustable shower head.
- Spacious aft cabin, full width with double berth to starboard and curved settee to port, hanging locker and drawers. Opening windows and hatch.
- Skyscreen screen/blinds on every overhead hatch.
- Sprung mattress in aft cabin.

Deck Equipment

Rig:

- Lewmar traveller.
- Adjustable genoa cars.

- Selden deck stepped 2-spreader aluminium mast.
- In-mast furling, controlled from cockpit.
- Furlex headsail furling.
- Rodkick boomvang.
- Backstay adjuster.
- Aluminium shroud rollers.
- Cruising spinnaker equipment.
- Spinnaker pole on mast.
- Trisail track.
- Most running rigging new in 2013.

Winches:

- Andersen self-tailing winches.
- Electric primary winches (variable speed).
- Winch handles.

Sails:

- UK vertical batten tri-radial mylar furling mainsail.
- UK 130% tri-radial mylar furling headsail.
- Cruising spinnaker with snuffer.
- 105% jib UK tri-radial.
- Storm jib.
- Storm trysail

General:

- Swim platform.

- Swim ladder.
- Lifeline gates.
- Varnished flag pole.
- Varnished cockpit table; canvas stowage for table in locker.
- Varnished glass holder.
- Flag halyards.

Anchoring & Mooring Equipment:

- Anchor windlass (rebuilt 2013).
- Remote control for windlass in cockpit.
- 300' 5/16th Acco chain.
- Spade, CQR and Delta anchors.
- Double anchor roller.
- 5 x Fenders.
- 4 x Docklines.

Covers, Canvas & Cushions:

- Seats in sternrail.
- Dodger (2013).
- Cockpit enclosure.
- Boots for dodger and enclosure.

Tender & Outboard:

- Outboard motor bracket.

Safety Equipment:

- Gas sniffer alarm.
- Liferaft (serviced 2013).

Fire-fighting equipment:

- Fire extinguisher.

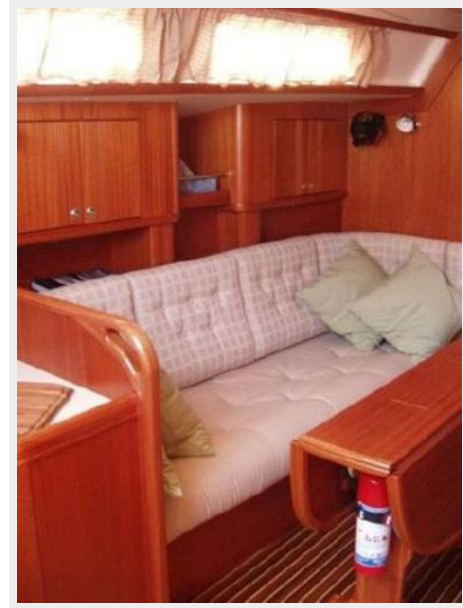
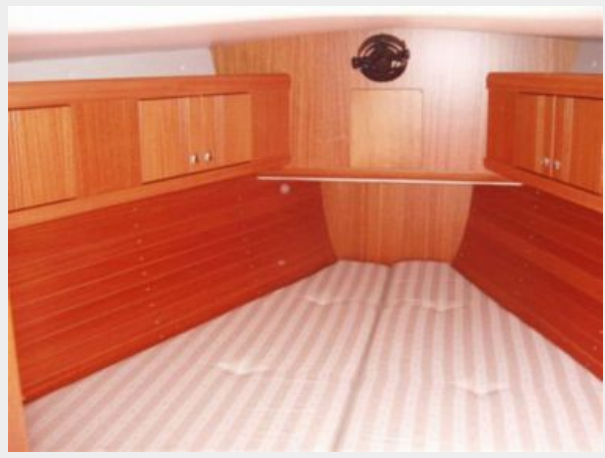
Exclusions

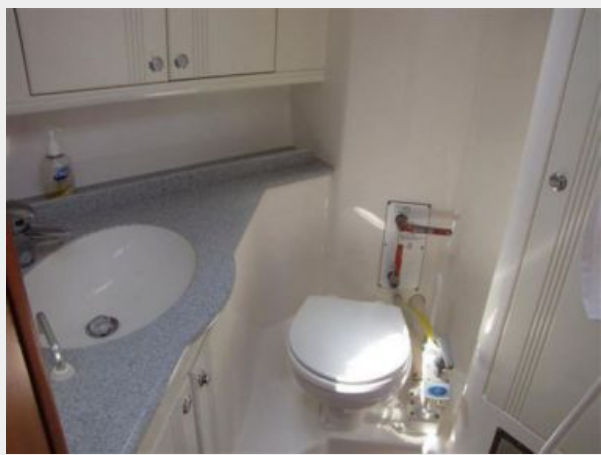
Owner's personal belongings.

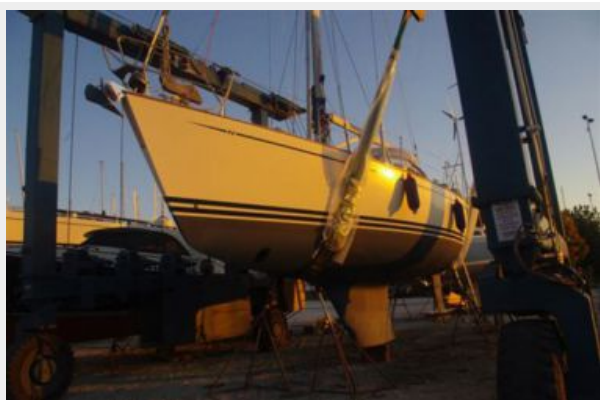
Disclaimer

The Company offers the details of this vessel or yacht in good faith but cannot guarantee or warrant the accuracy of this information nor warrant the condition of the vessel. A buyer should instruct his representatives, agents, or his surveyors, to investigate such details as the buyer desires validated. This vessel or yacht is offered subject to prior sale, price change, or withdrawal without notice.

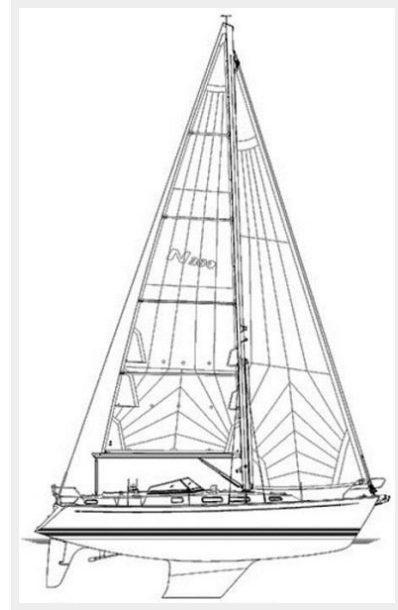
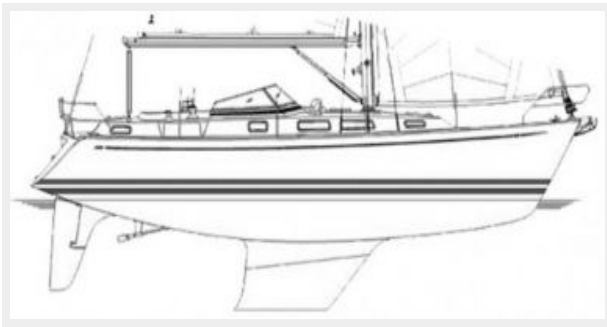
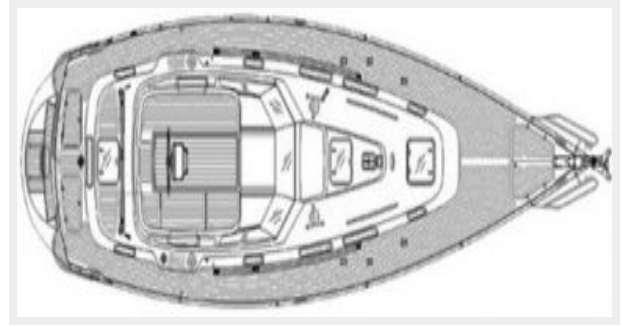
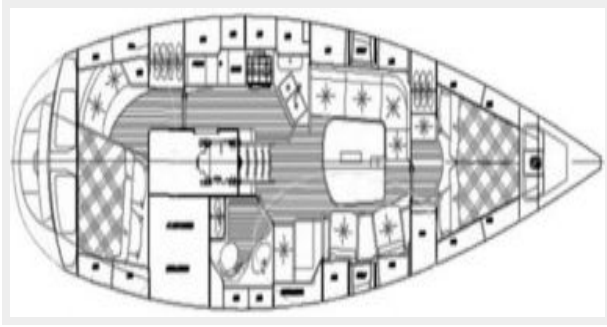
PHOTOS











CONTACTS

Andrey Shestakov, leading yacht broker of the sales department of Shestakov Yacht Sales Inc. Shestakov Yacht Sales Inc., the official representative of the Miami/Fort Lauderdale FL headquarters.

Contact details

Email: andrey@shestakovyachtsales.com

Web: shestakovyachtsales.com/en/

Telephones

USA: +1(954)274-4435

Office hours

Monday – Saturday: **9:00 - 21:00** EDT

Sunday: **closed**

Address



Harbour Towne Marina, 850 NE 3rd St,
STE 213, Dania, FL 33004