

TOUCHE' — PASSPORT YACHTS



Builder: PASSPORT YACHTS

Year Built: 2000

Model: Cruising Sailboat

Price: PRICE ON APPLICATION

Location: United States

LOA: 41' 0" (12.50m)

Beam: 12' 8" (3.86m)

Max Draft: 5' 3" (1.60m)

Our experienced yacht broker, Andrey Shestakov, will help you choose and buy a yacht that best suits your needs **Touche' — PASSPORT YACHTS** from our catalogue. Presently, at Shestakov Yacht Sales Inc., we have a wide variety of yachts available on our sale's list. We also work in close contact with all the big yacht manufacturers from all over the world.

If you would like to buy a yacht **Touche' — PASSPORT YACHTS** or would like help answering any questions concerning purchasing, selling or chartering a yacht, please call **+1(954)274-4435**

TABLE OF CONTENTS

TABLE OF CONTENTS	2
SPECIFICATIONS	5
Overview	5
Basic Information	5
Dimensions	5
Speed, Capacities and Weight	5
Accommodations	5
Hull and Deck Information	6
Engine Information	6
DETAILED INFORMATION	7
Accommodations	7
Deck	7
Mechanical	8
Electrical Equipment	8
Electronics	9
Sails & Rigging	9
Factory Options	9
Other Features & Upgrades	10
Exclusions	10
Exclusions	10
Disclaimer	11
PHOTOS	12
PROFILE VIEW AT THE DOCK	12
BOW	12
DECK LOOKING AFT	12
PORT SIDE DECK LOOKING FORWARD	12
STARBOARD SIDE DECK LOOKING FORWARD	12
PORT SIDE DECK LOOKING AFT	12

STARBOARD SIDE DECK LOOKING AFT	13
MAST RAILS & RIGID BOOM VANG	13
COCKPIT, ARCH , SOLAR PANELS, WIND GEN & DINGHY/DAVITS	13
SOLAR PANELS & WIND GENERATOR	13
COCKPIT SHOWER & COWL VENT	13
TRANSOM SUGAR SCOOP/SWIM LADDER	13
HELM, COCKPIT, COMPANIONWAY	14
COCKPIT LOOKING AFT	14
HELM SEAT PROPANE LOCKER	14
KEEL & SKEG RUDDER	14
MAIN SALON LOOKING FORWARD	14
GALLEY	14
GALLEY/FOUR BURNER STOVE	15
GALLEY	15
SALON LOOKING FORWARD FROM GALLEY	15
STOVE OVEN	15
NAV STATION	15
NAV STATION SWING-OUT SEAT	15
ELECTRIC PANEL	16
NAV STATION INSTRUMENTS	16
STARBOARD SALON SETTEE	16
PORT SALON L-SHAPED SETTEE	16
SALON PORT SIDE L-SHAPED SETTEE	16
SALON PORT SIDE SWING-OUT TV/VCR	16
SALON TABLE	17
SALON TABLE EXTENDED	17
SALON LOOKING AFT	17
MAIN SALON LOOKING AFT	17
OWNER'S CABIN PORT SIDE PULLMAN BERTH	17

OWNER'S CABIN HANGING LOCKERS	17
HEAD COMPARTMENT- SIT DOWN SHOWER	18
HEAD COMPARTMENT FORWARD	18
AFT CABIN HANGING LOCKER	18
AFT CABIN BERTH	18
SWING-UP COMPANIONWAY LADDER	19
AGM BATTERIES AT BASE OF LADDER	19
ENGINE HOURS -932	19
YANMAR DIESEL PORT SIDE VIEW	19
YANMAR DIESEL FRONT VIEW	19
YANMAR DIESEL STARBOARD SIDE VIEW	19
FOREPEAK CHAIN LOCKER	20
FUEL MANIFOLD	20
PROFILE DRAWING	20
BILGE/SEA WATER STRAINERS	20
INTERIOR LAYOUT DRAWING	20
CONTACTS	21
Contact details	21
Telephones	21
Office hours	21
Address	21

SPECIFICATIONS

Overview

TOUCHE' is a beautifully maintained Passport 41 has had excellent ownership since new. She is extremely well equipped with many factory options and recent upgrades. TOUCHE' is truly a "MUST BE SEEN TO BE FULLY APPRECIATED!" Passport 41. Conveniently located in St Petersburg, FL and just a short distance from Tampa International Air Port.

The Robert Perry designed Passport 41 is well respected as a high quality cruiser with excellent sailing performance offering great accommodations whether dockside, at anchor or offshore cruising.

Basic Information

Category: Cruising Sailboat

Model Year: 2000

Year Built: 2000

Country: United States

Dimensions

LOA: 41' 0" (12.50m)

LWL: 33' 7" (10.24m)

Beam: 12' 8" (3.86m)

Max Draft: 5' 3" (1.60m)

Speed, Capacities and Weight

Displacement: 22690 Pounds

Water Capacity: 120 Gallons

Holding Tank: 25 Gallons

Fuel Capacity: 100 Gallons

Accommodations

Total Cabins: 2

Total Heads: 1

Hull and Deck Information

Hull Material: Fiberglass

Engine Information

Engines: 1

Manufacturer: Detroit Diesel

Model: 4JH2TE

Engine Type: Inboard

Fuel Type: Diesel

DETAILED INFORMATION

Accommodations

Beautiful interior with satin finished teak joinery and solid teak and holly cabin sole throughout. Solid teak beveled doors and louvered doors on all lockers. Excellent storage for dockside living or offshore cruising. Head room approx. 6' 5" throughout the interior. Reverse cycle Marineair air conditioning.

- **Main Salon:** The spacious salon has a very large dining table with a fold-out leaf on center. To port is a large L-shaped settee with storage behind the cushion backs, Two storage lockers and open shelf between. The aft storage locker houses a "swing-out" flat panel TV and DVD player. Opposite to starboard is a full length settee with storage behind one back rest, two storage lockers and a large bookshelf between. Four fixed ports and one large deck hatch.
- **Galley:** The spacious U-shaped galley is aft to port with corian counter top, Top and front loading refrig and separate top loading fzr, large double polished SS sink with pressure H&C water, filtered drinking water, fresh and raw water manual foot pumps and fitted cutting board. Galley storage includes top loading pots & pan storage, top loading trash bin, seven lockers, six drawers, slide out cutting board. Three opening ports and a deck hatch for ventilation. Seafrst BD 12V Cold Plate Ref and Separate Fzr SS Propane Broadwater Stoves w/ Four Burners and Oven GE Microwave Oven, Installed in Galley Cabinet Purest One Water Filter Two 20# Aluminum Propane Bottles Trident Propane Safety Solenoid Switch
- **Aft Cabin:** Opposite the galley and to starboard is the guest cabin with a large double berth (50"W x80"L) with drawer and locker under. Outboard there is a hanging locker and multiple storage bins. Two SS opening ports in the cabin side and two to the cockpit.
- **Nav Station:** Just forward of the aft cabin, the outboard facing nav station has a large nav table with storage and a "swing-out" stool. Flush mounted electronics outboard and full electric panel on the aft bulkhead. One SS opening port.
- **Owner's Cabin:** The full beam cabin has a large "Pullman" style double berth (51"W x 80"L) to port, bookshelf and two storage lockers outboard and a high open shelf at the foot of the berth, six large drawers under and two large hanging lockers outboard to starboard. There are four opening SS ports and one deck hatch, one 12V fan
- **Head Compartment:** The head compartment is full forward with vanity outboard to port, medicine cabinet, two drawers, six lockers and access to the chain locker full forward. Fresh water flush Raritan Elegance Marine Toilet on center, sit down shower aft to starboard. Two SS opening ports and one large deck hatch, one 12V fan.

Deck

- **CUSTOM 316 SS COCKPIT ARCH-NEW 2010/11:** Dinghy Davits Two 210 Watt Sun

Electronics Solar Panels Air Breeze Wind Generator Multiple Antennas

- **DINGHY:** 2012 Achilles RIB Model HB-300FX w/ 15HP Mercury 2-Stroke Outboard-on davits
- **GROUND TACKLE:** Lewmar Vertical Reversible Windlass Double SS Anchor Roller Rocna 55 lb. Anchor w/Chain Rode Raw Water Washdown Fortress FX-23 Stern Anchor
- **VENTILATION:** Four Lewmar Ocean Series Deck Hatches: (2) Large, (1) Med, (1) Sm (All hatches with hinged teak framed screens) Three Cowl Vents: (2) SS 4" w/FG Dorade Boxes and SS Guards, (1) Sm (Cockpit) Thirteen SS Opening Ports (three additional from standard) Four Large Fixed Ports-Salon All Port Lights have Accordion Curtains
- **SAFETY:** SS Handrails Three SS Grab Rails on Dodger SS Mast Rails High Double Life Lines w/Gates P & S Deck Bulwarks w/Alum Toe Rail Deck Pad Eyes for Jack Lines Transom Gate w/Deep Fold Down Swim Ladder Emergency tiller Life Sling on Stern Rail Life Jackets Flares Running lights and mast head lights-Converted to LED
- **CANVAS:** All dark Blue Sunbrella Full Dodger w/Grab Rails and Cover for Sun Protection Helm Bimini Top w/Grab Rails Zip on connector between Dodger & Bimini Bimini w/Zip on Sun Shade(black scrim-back and side convertible port & stbd) Full winter cover-Blue Sunbrella Covers for all Deck Hatches Covers for Cockpit Winches Mack Sails-Mac Pac-Mainsail Cover
- **MISC:** 40" Diameter Edson Wheel Varnished teak cockpit table Drink holders on pedestal Varnished solid teak companionway doors w/ lift-off hinges Solid clear companionway "drop board" for off shore cruising Cockpit shower at transom Closed cell foam cockpit cushions Docklines & Fenders

Mechanical

- **Yanmar 4JH2TE, 62hp Diesel w/932 Hours** Three Blade 18" Max Prop-2010 Two alum fuel tanks-total= 100 gallons Fuel manifold in port side cockpit seat locker Racor Fuel Filter Fireboy MA2-125 Manual/Automatic Fire Extinguisher Marineair Reverse Cycle Air Conditioning-16000 BTU Two SS water tanks-total= 120 gallons
- **BILGE PUMPS:** Rule 3500 auto/man electric Manual diaphragm-Cockpit

Electrical Equipment

Single 120V/30Amp Shore Power w/Two 50' Shore Power Cords

- **BATTERIES and CHARGING:** Two Life Line AGM 4D House Batteries-New 2010 One Life Line AGM Grp 31 Engine Start-New 2010 Heart 2000 Inverter/Charger-Rebuilt 2013 Balmar High Output Alternator Balmar Multi Stage Regulator-2010/11 Air Breeze Wind Generator-New 2010 E-Marine Systems-Wind Generator Control Panel Two Sun Electronics 210 Watt Each Solar Panels-Total 420 Watts-New 2010/11 (solar panel "on/off" switch in cabinet under aft cabin berth) Blue Sky Energy IPN Remote Monitor/Controller for Solar Panels

- **MISC:** Custom Bass Electrical Panel Galvanic Isolator Internal Bonding Custom 12" Copper Plate Wired to Mast for Lightening Ground-2010/11

Electronics

- **NAV STATION:** Comar AIS Transponder Raytheon ST 7000+ Auto Pilot Control Heart Interface Link 2000R Coastal Climate Control Digital Air Conditioning Control Tank Tender-Water & Fuel Gauge Garmin 200 VHF Icom IC-M710 SSB Blue Sky Energy IPN Remote-Solar Panel Controller E-Marine System Wind Generator Control Panel Rule High Water Alarm Fireboy Auto Ext. Alarm 12V DC Outlet Bass Products Electric Panel Weems and Plath Ships Clock and Barometer Battery Switch Bilge pump counter Chart table storage, storage locker One SS opening port ACR Global Fix Pro 406 EPIRB-at companionway
- **OWNER'S CABIN:** Raymarine ST 60 Multi Display Read-out
- **HELM/COCKPIT:** Garmin 4210 Color Radar/Chart Plotter-Pedestal mount Garmin 18 HD Radar Dome on Kato SS Mast Mount Raymarine ST 60 Compass, Depth, Speed, AWI/WS- All mounted on a SS Rail above the companionway slide Ritchie SP-5 GlobeMaster Compass Raytheon 52 VHF Raymarine ST 8002 Auto Pilot Control 12V DC Outlet Loud Hailer-Mast Mount Garmin 100 VHF
- **ENTERTAINMENT:** Samsung 18" Flat Panel TV w/ UFO TV Antenna Magnavox DVD player Pioneer AM/FM/CD/WMA/MP3 Stereo w/ two salon speakers

Sails & Rigging

Custom Forespar Double Spreader Mast Configured for Cutter Rig w/four halyards: Main, Genoa, and Spinnaker. Standing rigging with Norseman fittings-lower, swage-upper. Insulated back stay for SSB.

- **NORTH SAILS:** Full Battened Mainsail w/ two reefs Mac-Pac Sail Cover w/ Lazy Jacks-New 2012 130% RF Genoa
- **LEWMAR WINCHES: Cockpit:** Two #58 ST2SP-Sheet One #40 ST2SP w/ triple rope clutches-Pt cabin top One #44 ST2SP w/ triple rope clutches-Stbd cabin top **Mast:** One #40 ST2SP w/ triple rope clutches-Pt One #40 ST2SP w/ triple rope clutches-Stbd One #16 STSS w/ two rope clutches-Boom Outhaul w/ rope clutch-Boom
- **DECK HARDWARE:** Harken MK III roller furling Rigid Boom Vang Inboard genoa track Cabin top staysail track Lewmar double sheave genoa turning blocks SS mast rails Windex Tang for intermediate staysail stay Lewmar mainsheet traveler w/ control lines to cockpit

Factory Options

- Yanmar 62 HP Diesel upgraded from 50 HP standard engine
- Louvered door throughout
- Toe room under cabinets

- Bass electrical panel
- Several interior dome lights with bulkhead mounted rocker switches
- Custom 7" innerspring mattress
- Three additional SS port lights-Two in cabin sides, one in galley to cockpit
- Larger deck hatch over berth
- Shoal draft keel at 5' 3"
- Aluminum toe rail
- Upgraded mooring cleat sizes

Other Features & Upgrades

- **2014:** New Almond ultra leather salon cushion Many interior lights converted to LED Bottom job refreshed
- **2013:** Pur 40e 12V Watermaker (1.5 gph)-Factory Rebuilt w/ new membrane (never used since rebuilt) Converts to manual operation in emergency. Custom port side front motor mount designed for easy access to raw water pump & impeller replacement Raw water pump rebuilt Bottom Job
- **2012:** Mac-Pac Sailcover w/ lazy jacks Upgrade to Raymarine cockpit auto pilot control head to ST 8002 w/Type III Liner Ram and Edson tiller arm Achilles Model HB-300FX Rib Dinghy
- **2010/2011:** Custom 316 SS arch w/ two 210 watt solar panels, Air Breeze wind generator and dinghy davits Garmin ChartPlotter, Radar, VHF-Cockpit VHF Loud Hailer-mast mounted Custom platform under rear lazarette to hold two scuba tanks SS eye pads bonded to inside transom to secure spares Custom platform in port cockpit locker to organize storage Samsung 18" flat panel TV on swing-out bracket w/DVD player in salon locker Max Prop-18" three blade Shark shaft line cutter New cutlass bearing Raritan Elegance Electric toilet-Fresh Water Flush Sanitation hoses replaced Forespar Whisker Pole-mast mounted w/ control lines Seafrst BD 12V Cold Plate Ref & Fzr-One ref plate, Two fzr plates Purest One Water Filter-Galley (uses same filter at Pur watermaker) Foredeck/Anchor wash down pump Bimini Top and zippered bimini to dodger connector and zippered black mesh sun screen-aft and convertible port or starboard Bottom stripped and epoxy barrier coated

Exclusions

- Personal sailing gear
- Personal belongings
- Parts and hardware not specific to TOUCHE'

Exclusions

Owner's personal belongings.

Disclaimer

The Company offers the details of this vessel or yacht in good faith but cannot guarantee or warrant the accuracy of this information nor warrant the condition of the vessel. A buyer should instruct his representatives, agents, or his surveyors, to investigate such details as the buyer desires validated. This vessel or yacht is offered subject to prior sale, price change, or withdrawal without notice.

PHOTOS

PROFILE VIEW AT THE DOCK



BOW



DECK LOOKING AFT



PORT SIDE DECK LOOKING FORWARD



PORT SIDE DECK LOOKING AFT



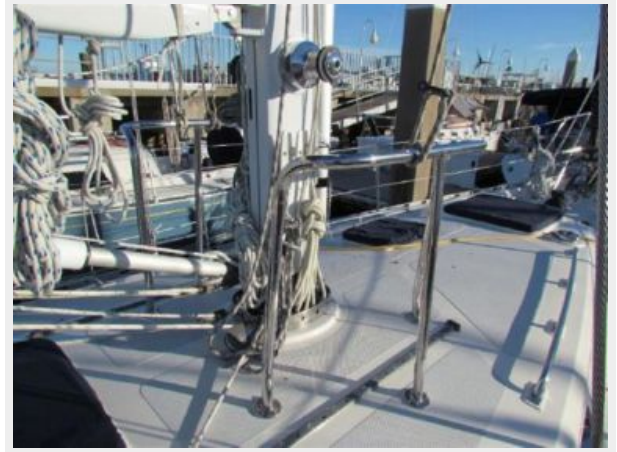
STARBOARD SIDE DECK LOOKING FORWARD



STARBOARD SIDE DECK LOOKING AFT



MAST RAILS & RIGID BOOM VANG



COCKPIT, ARCH, SOLAR PANELS, WIND GEN & DINGHY/DAVITS



SOLAR PANELS & WIND GENERATOR



COCKPIT SHOWER & COWL VENT



TRANSOM SUGAR SCOOP/SWIM LADDER



HELM, COCKPIT, COMPANIONWAY



COCKPIT LOOKING AFT



HELM SEAT PROPANE LOCKER



KEEL & SKEG RUDDER



MAIN SALON LOOKING FORWARD



GALLEY



GALLEY/FOUR BURNER STOVE



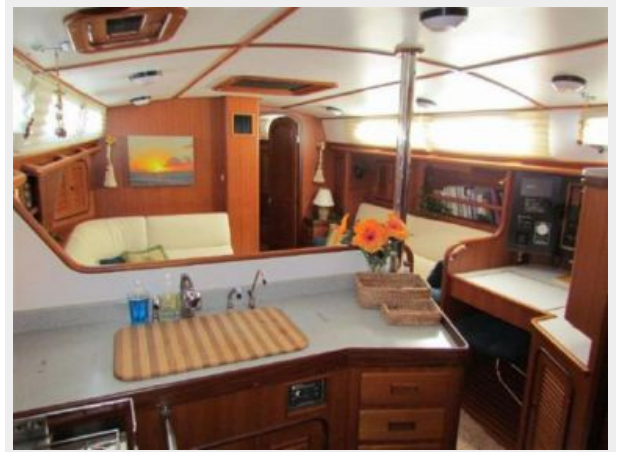
GALLEY



STOVE OVEN



SALON LOOKING FORWARD FROM GALLEY



NAV STATION



NAV STATION SWING-OUT SEAT



ELECTRIC PANEL



NAV STATION INSTRUMENTS



STARBOARD SALON SETTEE



PORT SALON L-SHAPED SETTEE



SALON PORT SIDE L-SHAPED SETTEE



SALON PORT SIDE SWING-OUT TV/VCR



SALON TABLE



SALON TABLE EXTENDED



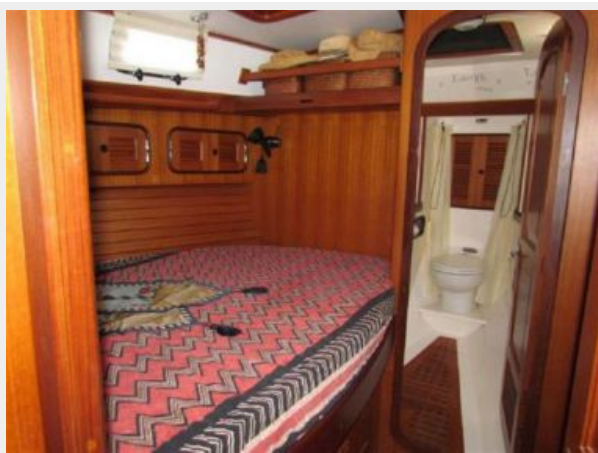
SALON LOOKING AFT



MAIN SALON LOOKING AFT



OWNER'S CABIN PORT SIDE PULLMAN BERTH



OWNER'S CABIN HANGING LOCKERS



HEAD COMPARTMENT- SIT DOWN SHOWER

HEAD COMPARTMENT FORWARD



AFT CABIN HANGING LOCKER

AFT CABIN BERTH



SWING-UP COMPANIONWAY LADDER



AGM BATTERIES AT BASE OF LADDER



ENGINE HOURS -932



YANMAR DIESEL PORT SIDE VIEW



YANMAR DIESEL FRONT VIEW



YANMAR DIESEL STARBOARD SIDE VIEW



FUEL MANIFOLD



FOREPEAK CHAIN LOCKER



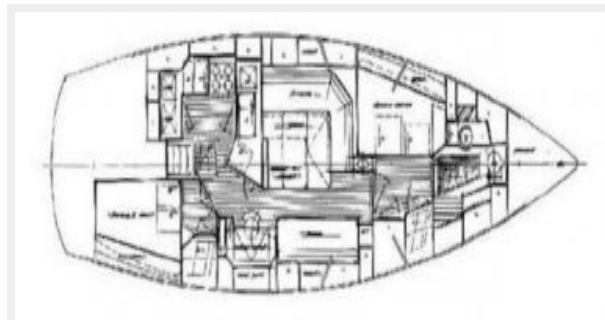
BILGE/SEA WATER STRAINERS



PROFILE DRAWING



INTERIOR LAYOUT DRAWING



CONTACTS

Andrey Shestakov, leading yacht broker of the sales department of Shestakov Yacht Sales Inc. Shestakov Yacht Sales Inc., the official representative of the Miami/Fort Lauderdale FL headquarters.

Contact details

Email: andrey@shestakovyachtsales.com

Web: shestakovyachtsales.com/en/

Telephones

USA: +1(954)274-4435

Office hours

Monday – Saturday: **9:00 - 21:00** EDT

Sunday: **closed**

Address



Harbour Towne Marina, 850 NE 3rd St,
STE 213, Dania, FL 33004