

## PANACEA — BAYLINER



**Судостроитель:** BAYLINER

**Год постройки:** 1989

**Модель:** Моторная яхта

**Цена:** **ЦЕНА ЯХТЫ ПО ЗАПРОСУ**

**Местонахождение:** United States

**Длина общая:** 45' 0" (13.72m)

**Ширина:** 14' 11" (4.55m)

**Мин. осадка:** 3' 6" (1.07m)

**Макс. осадка:** 3' 6" (1.07m)

**Крейс. скорость:** 8 Kts. (9 MPH)

**Макс. скорость:** 18 Kts. (21 MPH)

Купить Panacea — BAYLINER а также выбрать подходящую вам яхту из нашего каталога яхт вам поможет опытный яхтенный брокер Андрей Шестаков. На сегодняшний день компания Shestakov Yacht Sales Inc. имеет большое количество яхт в собственном списке продаж, а также тесно сотрудничает со всеми крупными яхтенными производителями по всему миру.

Для того чтобы купить яхту Panacea — BAYLINER а также проконсультироваться по любому вопросу связанному с покупкой, продажей, чартером яхт позвоните по телефону **+7(918)465-66-44**.

# ОГЛАВЛЕНИЕ

---

ОГЛАВЛЕНИЕ	2
ХАРАКТЕРИСТИКИ	6
Обзор	6
Основная информация	6
Размеры	6
Скорость, вместимость и масса	6
Размещение	7
Корпус и палуба	7
Информация о двигателе	7
ПОДРОБНОЕ ОПИСАНИЕ	8
45' Bayliner Overview	8
45' Bayliner Vessel Walkthrough	8
45' Bayliner Accommodations	8
45' Bayliner Salon	8
45' Bayliner Galley	8
45' Bayliner Dining	9
45' Bayliner Master Stateroom	9
45' Port Forward Guest Stateroom	9
45' Bayliner Port Aft Guest Stateroom	9
45' Bayliner Laundry	10
45' Bayliner Raised Pilothouse	10
45' Bayliner Flybridge	10
45' Bayliner Aftdeck	10
45' Bayliner Audio/Visual Equipment	10
45' Bayliner Electronics	10
45' Bayliner Electrical System	11
45' Bayliner Engine/Mechanical Equipment	11
45' Bayliner Deck Equipment	12

45' Bayliner Tender	12
45' Bayliner Safety & Fire Protection	13
45' Bayliner Exclusions	13
45' Bayliner Disclaimer	13
Исключения	13
Отказ от ответственности	13
<b>ФОТОГРАФИИ</b>	<b>14</b>
45' Bayliner Underway Starboard Profile	14
45' Bayliner Underway Starboard Profile	14
45' Bayliner Forward Profile	14
45' Bayliner Port Aft Profile	14
45' Bayliner Aft Profile	15
45' Bayliner Anchor Windlass	15
45' Bayliner Foredeck	15
45' Bayliner Foredeck Aft	15
45' Bayliner Port Side Deck	16
45' Bayliner Foredeck Benchseat	16
45' Bayliner Starboard Side Deck	16
45' Bayliner Flybridge Forward	16
45' Bayliner Flybridge Aft	17
45' Bayliner Flybridge Helm	17
45' Bayliner Flybridge Helmseat	17
45' Bayliner Flybridge Port Seating	17
45' Bayliner flybridge Starboard Seating	17
45' Bayliner BBQ Grill	17
45' Bayliner Tender Davit	18
45' Bayliner Aftdeck Port	18
45' Bayliner Aftdeck Starboard	18
45' Bayliner Aftdeck Forward	18

---

45' Bayliner Tender photo2	18
45' Bayliner Tender photo3	18
45' Bayliner Tender photo1	19
45' Bayliner Salon Forward	19
45' Bayliner Salon Aft	19
45' Bayliner Salon Port	19
45' Bayliner Salon Starboard	19
45' Bayliner Salon Starboard Forward	19
45' Bayliner Salon Port Seating	20
45' Bayliner Salon Starboard Lounge Chairs	20
45' Bayliner Galley photo1	20
45' Bayliner Galley photo2	20
45' Bayliner Pilothouse Forward	20
45' Bayliner Pilothouse Port	20
45' Bayliner Pilothouse Starboard	21
45' Bayliner Pilothouse Helm photo1	21
45' Bayliner Pilothouse Helm photo2	21
45' Bayliner Pilothouse Helm photo3	21
45' Bayliner Pilothouse Helm photo4	21
45' Bayliner Pilothouse Seating	21
45' Bayliner Master Stateroom	22
45' Bayliner Master Stateroom Port	22
45' Bayliner Master Stateroom Head	22
45' Bayliner Master Stateroom Starboard	22
45' Bayliner Master Stateroom Shower	23
45' Bayliner Port Aft Guest Stateroom	23
45' Bayliner Port Forward Guest Stateroom	23
45' Bayliner Guest Head	23
45' Bayliner Guest Shower	24

---

---

45' Bayliner Washer/Dryer	24
45' Bayliner Engine Room Aft	24
45' Bayliner Port Main Engine	24
45' Bayliner Starboard Main Engine	24
45' Bayliner Fuel Filters	24
45' Bayliner Water Heater	25
45' Bayliner Electrical Panel	25
45' Bayliner Generator photo1	25
45' Bayliner Generator photo2	25
45' Bayliner Inverter	25
45' Bayliner Layout	25
45' Bayliner Aftdeck Starboard Bilge	26
<b>КОНТАКТЫ</b>	<b>27</b>
Контактная информация	27
Телефоны	27
Время работы	27
Адрес	27

# ХАРАКТЕРИСТИКИ

## Обзор

Panacea is a classic 45' Bayliner pilothouse motoryacht in very good condition. She offers 3 staterooms, 2 heads, raised pilothouse, bimini and Esienglass enclosed flybridge and aftdeck and numerous upgrades, like icemaker, carpet, pilothouse sole and some newer electronics. Panacea is a Great Loop veteran. Her sellers have moved back to California, so Panacea is seriously for sale and ready for her next cruise with new owners.

## Основная информация

**Тип судна:** Моторная яхта

**Подкатегория:** Flybridge

**Модельный год:** 1989

**Год постройки:** 1989

**Страна:** United States

**Верх:** Radar Arch and Bimini

**Открытая палуба мостика:** Да

## Размеры

**Длина общая:** 45' 0" (13.72m)

**Ширина:** 14' 11" (4.55m)

**Мин. осадка:** 3' 6" (1.07m)

**Макс. осадка:** 3' 6" (1.07m)

**Трапы:** 16' 0" (4.88m)

## Скорость, вместимость и масса

**Крейс. скорость:** 8 Kts. (9 MPH)

**Макс. скорость:** 18 Kts. (21 MPH)

**Водоизмещение:** 28000 Pounds

**Вместимость воды:** 200 Gallons

**Вместимость сточного бака:** 48 Gallons

**Объем топливного бака:** 504 Gallons

## Размещение

---

**Всего кают:** 3

**Всего коек:** 4

**Спальные места:** 6

**Всего ком. состава:** 2

## Корпус и палуба

---

**Материал корпуса:** Fiberglass

**Материал палубы:** Composite Fiberglass

**Комплектация корпуса:** Semi-Displacement

**Цвет корпуса:** White

**Отделка корпуса:** Aluminum

## Информация о двигателе

---

**Двигатели:** 2

**Производитель:** Hino

**Тип двигателя:** Inboard

**Тип топлива:** Diesel

---

# ПОДРОБНОЕ ОПИСАНИЕ

---

## 45' Bayliner Overview

---

Panacea is a classic 45' Bayliner pilothouse motoryacht in very good condition. She offers 3 staterooms, 2 heads, raised pilothouse, bimini and Esienglass enclosed flybridge and aftdeck and numerous upgrades, like icemaker, carpet, pilothouse sole and some newer electronics. Panacea is a Great Loop veteran. Her sellers have moved back to California, so Panacea is seriously for sale and ready for her next cruise with new owners.

## 45' Bayliner Vessel Walkthrough

---

Entering the salon through the sliding teak and glass aft door from the covered aftdeck, you will find two lounge chairs and an end table to starboard, wet bar and entertainment center starboard forward, wrap-around seating and table to port and galley port forward. Walk forward and step down into the guest companionway and you will find the guest head with enclosed shower to starboard, guest stateroom with queen size berth to port. The master stateroom with ensuite head and enclosed tub/shower is forward, as is another guest stateroom port forward with a sofa that converts to over/under bunks. Back in the salon, step up into the raised pilothouse and find side deck access doors on each side, helm forward, benchseat and table aft and steps to the flybridge. Engine room access is via salon sole hatches. The generator is accessed via aftdeck hatches.

## 45' Bayliner Accommodations

---

Panacea offers a master stateroom forward with island queen berth and ensuite head, guest stateroom port forward with a sofa that converts into over/under bunks and a guest stateroom port aft with queen size berth. The guest head is to starboard.

## 45' Bayliner Salon

---

The salon offers two lounge chairs, table and storage cabinets to starboard, wet bar and entertainment center starboard forward, wrap-around seating and table to port, sliding teak & glass door aft, carpet, opening side windows, blinds and valances.

## 45' Bayliner Galley

---

The galley is located port forward in the salon.

- Whirlpool Gold microwave oven



- Princess 3-burner electric cooktop and oven
- Norcold refrigerator/freezer
- Whirlpool trash compactor
- Nutone food center
- GE filtered water system at galley sink
- Double stainless steel sinks
- Storage drawers and cabinets
- Teak & Holly sole
- U-Line icemaker in the salon wetbar (2013)
- Stainless steel sink in the salon wetbar
- Magma stainless steel BBQ grill on the flybridge

## 45' Bayliner Dining

---

Dining space is available at the salon table and the pilothouse table.

## 45' Bayliner Master Stateroom

---

The master stateroom is forward and offers an island queen berth, nightstands, reading lights, 4 portlights, 2 overhead hatches, shelves, hanging lockers, storage drawers and cabinets, carpet and ensuite head with enclosed tub/shower.

## 45' Port Forward Guest Stateroom

---

The port forward guest stateroom offers a sofa that converts into over/under bunks, reading lights, 2 portlights, overhead hatch, desk, storage cabinets and carpet. This stateroom is often used as a sitting room, office or storage off the master stateroom.

The guest head with enclosed shower is starboard aft.

## 45' Bayliner Port Aft Guest Stateroom

---

The port aft guest stateroom offers a queen size berth, nightstand, reading lights, 2 portlights, shelf, hanging locker, storage drawers and carpet.

The guest head with enclosed shower is to starboard.

---

## 45' Bayliner Laundry

---

- Indesit combo washer/dryer

---

## 45' Bayliner Raised Pilothouse

---

The raised pilothouse offers a full helm forward, Zwaardus helm seat, side deck access doors with screens on each side, a benchseat with table aft, internal steps to the flybridge and vinyl teak & holly sole (2013).

---

## 45' Bayliner Flybridge

---

The flybridge offers a Radar arch, bimini, Eisenglass enclosure, full helm forward, helmseat, L-shaped benchseats on each side, non-skid deck, tender storage and davit aft, Magma stainless steel BBQ grill, deck storage box, hatch to the aftdeck ladder and stainless steel rails with canvas covers.

---

## 45' Bayliner Aftdeck

---

The covered aftdeck offers a full Eisenglass and screen enclosure, exterior carpet over non-skid deck, transom gate to the fiberglass swimplatform, teak cap rails, steps to the side decks, 2 rod holders and rod storage, stainless steel and teak ladder to the flybridge and washdown.

---

## 45' Bayliner Audio/Visual Equipment

---

- Sea Star TV antenna
- Vizio flat screen TV in the salon
- Kenwood KDC-HD548U AM/FM/CD/MP3 player in the salon and on the flybridge
- Philips flat screen TV in the master stateroom
- US Marine AM/FM/Cassette player in the master stateroom
- Kenwood speakers in the salon

---

## 45' Bayliner Electronics

---

- Garmin Radar
- Garmin AIS receiver
- Bullet wifi amplifier
- Garmin GPSMap 4210 Multi-Function Display in the pilothouse (2013)
- Garmin GHC10 autopilot in the pilothouse
- West Marine 580 VHF in the pilothouse and on the flybridge
- US Marine LCD 5000 depth sounder in the pilothouse
- Standard Horizon depth sounder on the flybridge
- Ritchie magnetic compass in the pilothouse and on the flybridge
- Standard Horizon LH10 loud hailer in the pilothouse
- Nauticalia barometer and clock in the salon

## **45' Bayliner Electrical System**

---

- Onan 12.5 kW generator with 811 hours
- Xantrex Freedom HF 1800 watt inverter (2013)
- SVS battery monitor panel in the pilothouse
- 2 X 30 amp shore cords

## **45' Bayliner Engine/Mechanical Equipment**

---

- Twin Hino main engines
- Kobelt engine controls
- Perko sea strainers
- Luber-Finer LFF-8061 fuel filters
- Hynautic hydraulic steering system
- Bennett trim tabs
- Marine Air Systems reverse cycle air conditioning/heating system (Pilothouse unit inoperable)

- White Rodgers electric heating system
- 2 X Attwood 10.5 gallon water heaters
- VDO water tank level gauge
- Electric heads

---

## 45' Bayliner Deck Equipment

---

- Muir Cougar anchor windlass with foot controls
- Claw 44lb anchor
- Stainless steel rails forward, teak cap rails aft
- Stainless steel deck hardware
- Stainless steel fender racks forward
- Foredeck benchseat
- Non-skid deck
- Boarding gates on each side forward
- Dock water connection port side
- Deck storage box on the flybridge
- Fiberglass swimplatform
- Stainless steel and teak swim ladder

---

## 45' Bayliner Tender

---

- AB 10.5' RIB
- Yamaha 15 hp 2-stroke outboard
- 500lb davit on the flybridge
- Swimplatform davit system

---

## 45' Bayliner Safety & Fire Protection

---

- Ray-Line searchlight
- Fire extinguishers
- Rule bilge pumps
- Bilge high water alarm
- Aqua Meter carbon monoxide detector

---

## 45' Bayliner Exclusions

---

- Sellers' personal belongings
- Galleyware

---

## 45' Bayliner Disclaimer

---

The Company offers the details of this vessel in good faith but cannot guarantee or warrant the accuracy of this information nor warrant the condition of the vessel. A buyer should instruct his agents, or his surveyors, to investigate such details as the buyer desires validated. This vessel is offered subject to prior sale, price change, or withdrawal without notice.

---

## Исключения

---

При продаже яхты исключаются личные вещи владельца.

---

## Отказ от ответственности

---

Компания предоставляет описание судна или яхты добросовестно, но не может гарантировать точность этой информации, а также не ручается за техническое состояние. Покупатель должен проинструктировать своих агентов или оценщиков исследовать представленную информацию более подробно, по собственному желанию. Продажа судна или яхты, изменение цены или снятие с продажи будет происходить без предварительного уведомления.

# ФОТОГРАФИИ

45' Bayliner Underway Starboard Profile



45' Bayliner Underway Starboard Profile



45' Bayliner Forward Profile



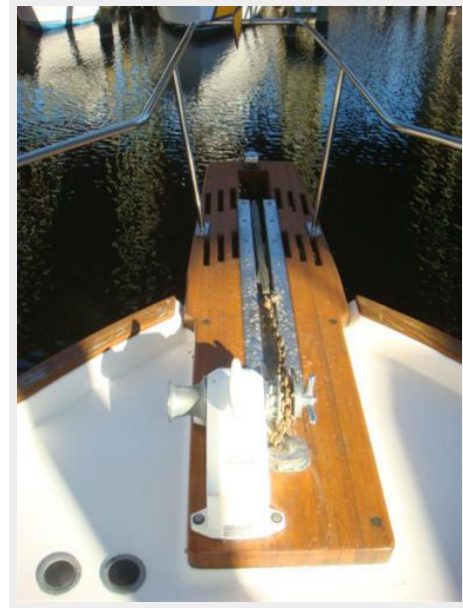
45' Bayliner Port Aft Profile



**45' Bayliner Aft Profile**



**45' Bayliner Anchor Windlass**



**45' Bayliner Foredeck**



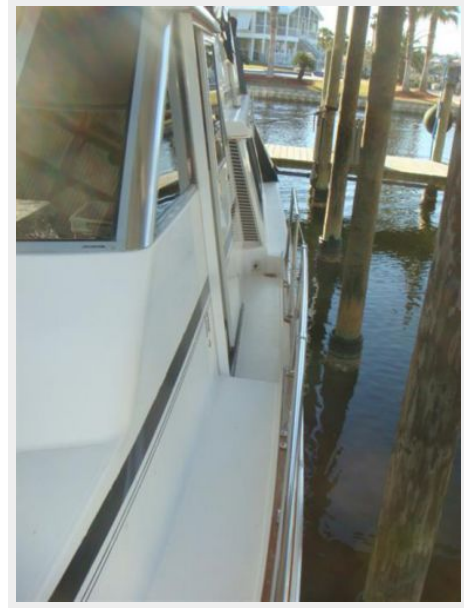
**45' Bayliner Foredeck Aft**



**45' Bayliner Foredeck Benchseat**



**45' Bayliner Port Side Deck**



**45' Bayliner Starboard Side Deck**



**45' Bayliner Flybridge Forward**





**45' Bayliner Flybridge Aft**



**45' Bayliner Flybridge Helm**



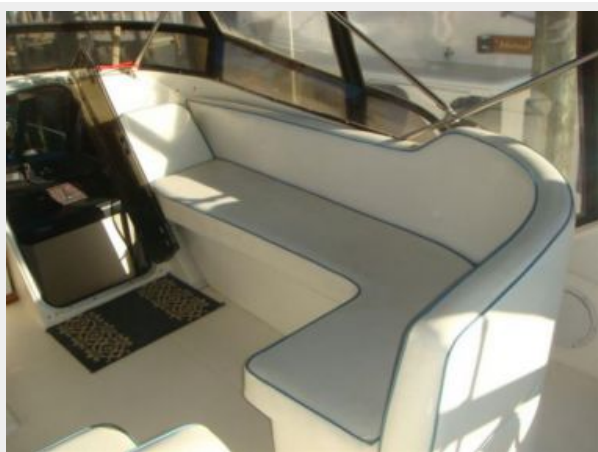
**45' Bayliner Flybridge Helmseat**



**45' Bayliner Flybridge Port Seating**



**45' Bayliner flybridge Starboard Seating**



**45' Bayliner BBQ Grill**



**45' Bayliner Tender Davit**



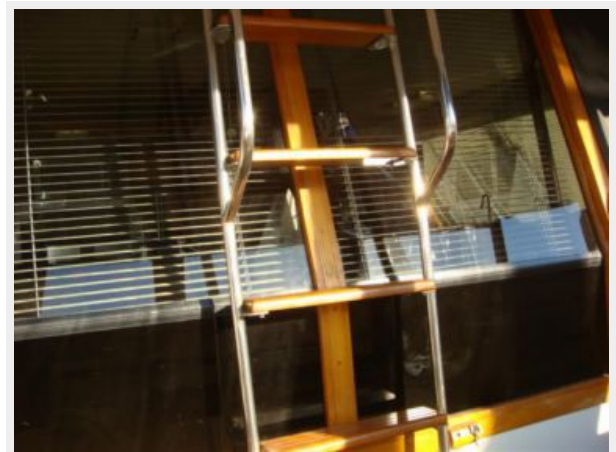
**45' Bayliner Aftdeck Port**



**45' Bayliner Aftdeck Starboard**



**45' Bayliner Aftdeck Forward**



**45' Bayliner Tender photo2**



**45' Bayliner Tender photo3**



**45' Bayliner Tender photo1**



**45' Bayliner Salon Forward**



**45' Bayliner Salon Aft**



**45' Bayliner Salon Port**



**45' Bayliner Salon Starboard**



**45' Bayliner Salon Starboard Forward**



**45' Bayliner Salon Port Seating**



**45' Bayliner Salon Starboard Lounge Chairs**



**45' Bayliner Galley photo1**



**45' Bayliner Galley photo2**



**45' Bayliner Pilothouse Forward**



**45' Bayliner Pilothouse Port**



**45' Bayliner Pilothouse Starboard**



**45' Bayliner Pilothouse Helm photo1**



**45' Bayliner Pilothouse Helm photo2**



**45' Bayliner Pilothouse Helm photo3**



**45' Bayliner Pilothouse Helm photo4**



**45' Bayliner Pilothouse Seating**



**45' Bayliner Master Stateroom**



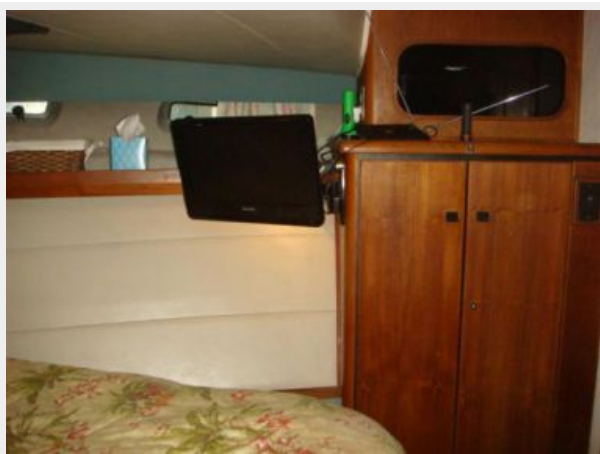
**45' Bayliner Master Stateroom Port**



**45' Bayliner Master Stateroom Head**



**45' Bayliner Master Stateroom Starboard**



### 45' Bayliner Master Stateroom Shower



### 45' Bayliner Port Aft Guest Stateroom



### 45' Bayliner Port Forward Guest Stateroom



### 45' Bayliner Guest Head



**45' Bayliner Guest Shower**



**45' Bayliner Washer/Dryer**



**45' Bayliner Engine Room Aft**



**45' Bayliner Port Main Engine**



**45' Bayliner Starboard Main Engine**



**45' Bayliner Fuel Filters**





45' Bayliner Water Heater



45' Bayliner Electrical Panel



45' Bayliner Generator photo1



45' Bayliner Generator photo2



45' Bayliner Inverter



45' Bayliner Layout



### 45' Bayliner Aftdeck Starboard Bilge



# КОНТАКТЫ

---

Андрей Шестаков (Andrey Shestakov) – ведущий яхтенный брокер отдела продаж яхт и судов компании Shestakov Yacht Sales Inc. Официальный представитель Shestakov Yacht Sales Inc. для русскоговорящих клиентов в центральном офисе компании в Майами/Форт Лодердейл/Флорида/США.

## Контактная информация

---

Email: [andrey@shestakovyachtsales.com](mailto:andrey@shestakovyachtsales.com)

Web: [shestakovyachtsales.com](http://shestakovyachtsales.com)

## Телефоны

---

Краснодарский край: **+7(918)465-66-44**

США, Майами, Флорида: **+1(954)274-4435**

## Время работы

---

Понедельник – Суббота: **9:00 - 21:00**  
EDT

Воскресенье: **Закрето**

## Адрес

---



Harbour Towne Marina, 850 NE 3rd St,  
STE 213, Dania, FL 33004