

# OCEAN ALEXANDER 100 HULL #2 — OCEAN ALEXANDER



**Судостроитель:** OCEAN ALEXANDER

**Год постройки:** 2015

**Модель:** Моторная яхта

**Цена:** ЦЕНА ЯХТЫ ПО ЗАПРОСУ

**Местонахождение:** United States

**Длина общая:** 100' 2" (30.53m)

**Ширина:** 23' 0" (7.01m)

**Мин. осадка:** 5' 6" (1.68m)

**Макс. осадка:** 6' 5" (1.96m)

Купить **Ocean Alexander 100 Hull #2 — OCEAN ALEXANDER** а также выбрать подходящую вам яхту из нашего каталога яхт вам поможет опытный яхтенный брокер Андрей Шестаков. На сегодняшний день компания **Shestakov Yacht Sales Inc.** имеет большое количество яхт в собственном списке продаж, а также тесно сотрудничает со всеми крупными яхтенными производителями по всему миру.

Для того чтобы купить яхту **Ocean Alexander 100 Hull #2 — OCEAN ALEXANDER** а также проконсультироваться по любому вопросу связанному с покупкой, продажей, чартером яхт позвоните по телефону **+7(918)465-66-44**.

# ОГЛАВЛЕНИЕ

ОГЛАВЛЕНИЕ	2
ХАРАКТЕРИСТИКИ	6
Основная информация	6
Размеры	6
Скорость, вместимость и масса	6
Размещение	6
Корпус и палуба	6
Информация о двигателе	7
ПОДРОБНОЕ ОПИСАНИЕ	8
Accommodations/Interior, Audio/Video	8
Construction	13
Mechanical	15
Plumbing	17
Electrical	18
Исключения	22
Отказ от ответственности	22
ФОТОГРАФИИ	23
Cockpit	23
Aft Deck	23
Aft Deck	23
Aft Deck	23
Aft Deck	23
Aft Deck	23
Salon	24
Salon	24
Salon	24
Salon	24
Salon	24

Formal Dining	24
Formal Dining	25
Formal Dining	25
Salon Storage / Bar	25
Day Head	25
Galley	25
Galley	25
Galley	26
Galley	26
Galley / Staircase to Flybridge	26
Galley Dinette	26
Galley Dinette	26
Galley Dinette	26
Galley Dinette	27
Galley Dinette	27
Pilothouse Helm	27
Pilothouse Helm	27
Pilothouse / Galley Dinette	27
Companionway	27
Master Stateroom	28
Master Stateroom	28
Master Stateroom	28
Master Stateroom	28
Master Stateroom Closet	28
Master Head	28
Master Head	29
Master Head	29
Master Head	29
VIP Stateroom	29

VIP Stateroom	30
VIP Stateroom	30
VIP Head	30
Guest Stateroom - 1	30
Guest Head	30
Guest Stateroom - 2	30
Guest Head - 2	31
Crew Quarters	31
Crew Quarters	31
Captain's Cabin	31
Captain's Cabin	31
Head	31
Crew Cabin	32
Crew Cabin	32
Head	32
Lazarette	32
Forward	32
Bow	32
Bow Seating	33
Side View	33
Side View	33
Flybridge	33
Flybridge	33
Flybridge	33
Flybridge Helm	34
Flybridge Helm	34
Flybridge Seating	34
Flybridge Bar	34
Flybridge Seating	34

---

Flybridge	34
Boat Deck	35
Boat Deck	35
Engine Room	35
Engine Room	35
Engine Room	35
Engine Room	35
Layout	36
Layout	36
<b>КОНТАКТЫ</b>	<b>37</b>
Контактная информация	37
Телефоны	37
Время работы	37
Адрес	37

# ХАРАКТЕРИСТИКИ

## Основная информация

Тип судна: Моторная яхта

Подкатегория: Flybridge

Модельный год: 2015

Год постройки: 2015

Страна: United States

## Размеры

Длина общая: 100' 2" (30.53m)

Длина по ватерлинии: 87' 11" (26.80m)

Ширина: 23' 0" (7.01m)

Мин. осадка: 5' 6" (1.68m)

Макс. осадка: 6' 5" (1.96m)

## Скорость, вместимость и масса

Водоизмещение: 229900 Pounds

Вместимость воды: 650 Gallons

Вместимость сточного бака: 200 Gallons Объем топливного бака: 4000 Gallons

## Размещение

Всего кают: 4

Каюта капитана: Да

## Корпус и палуба

Материал корпуса: Fiberglass

Дизайнер интерьера: Evan Marshall

## Информация о двигателе

---

**Двигатели:** 2

**Производитель:** Caterpillar

**Модель:** C-32 ACERT

**Тип двигателя:** Inboard

**Тип топлива:** Diesel

# ПОДРОБНОЕ ОПИСАНИЕ

## Accommodations/Interior, Audio/Video

### **MASTER STATEROOM:**

- LCD 50" TV with A/V System
- One Subwoofer
- "Floating" King-sized berth
- Two "floating" nightstands with granite or marble countertops
- White Aurora marble countertop at TV cabinet and port/STBD cabinets (New for 2014— design cues from 120)
- Bureau w/ chest of drawers at starboard side
- Vanity w/ chair & storage at port side
- Hidden safe in hanging locker
- Walk-in closet on port side. Space enlarged by 85% through utilizing space from forward staterooms and under floorboards (New for 2014)
- Hanging closet space on STBD side enlarged by 18% through utilizing space under forward staterooms floorboards or under stairs. (New for 2014)
- Enlarged windows with custom engineered solution incorporating aluminum beams and "sandwiched glass" construction technique from classed vessels. Allows of 28% greater visibility and incoming light (New for 2014)
- Custom headboard with recessed indirect lighting
- Cedar-lined, twin full-height hanging locker with automatic lighting
- Enlarged Master bathroom window with updated cabinetry to take advantage of additional 320% additional window visibility vs. previous port light (New for 2014)
- Heated granite floors in Master bathroom

### **SALON:**

- LCD 55" TV with Professional A/V System (Dolby true HD DTS-HD XM/Sirius capable w/multiEQ that provides virtually perfect acoustical environment for up to six individual seating locations, also detects "out of phase inner" auto compensable to match w/ subwoofer & speakers. HDMI 1.3 provides high bandwidth HD video output) for true color HD reproduction
- Middle-Atlantic Media Rack for A/ V equipment (Professional Studio quality rack provides ease in accessing various A/V equipment. Reduces labor, damage w/ heavy duty 13-gauge S/S and interlocking corners)
- Furman power conditioner (featuring multi-stage linear amplifier tech & extreme voltage



shutdown for yacht's unstable shore/genset power)

- One Subwoofer
- Wood paneling and cabinetry
- White Aurora marble countertop at wet bar, TV cabinet, and dining room divider cabinet
- Custom designed window mullion
- Decorative ceiling treatment
- Phantom screen (for insects + pollen protection) with dedicated wood box for door
- Enlarged windows in salon with custom engineered solution incorporation marine grade aluminum beams allowing for industry leading window expanse. Incorporate (where possible) A/C outlet from ceiling, provides unobstructed view to outside (New for 2014 – design cues from 120)
- Sub Zero icemaker
- Sub Zero refrigerator

### ***CREW QUARTERS (New for 2014):***

- Cedar-lined hanging locker with automatic lighting
- Kitchenette (sink, microwave and refrigerator/icemaker)
- Storage locker
- Drawers under bunk
- Microwave Oven
- LCD 24" TV & DVD with Satellite Receiver
- Four-person settee with an expandable table
- Three crew staterooms: captain, crew and high-n-low bunk stateroom
- Captain quarters includes private head w/ shower room, desk with storage and Full height hanging closet and queen size berth with storage under
- Dedicated stainless workbench with vice and Snap-on tool check. Also includes a wet locker (with ventilation and separate water drain) and storage compartment. All staterooms full air-conditioned
- Amtico flooring

### ***VIP / GUEST STATEROOM:***

- LCD 32" TV with Satellite Receiver on port wall beside door (VIP)
- LCD 22" TV with Satellite Receiver on wall (Port & Stbd Guest)
- Audio stereo and video system

- Queen-sized berth w/ innerspring mattress (VIP)
- Wood paneling and cabinetry
- Inboard single slide to outboard to make into queen (Port & Stbd Guest)
- Drawers under berth
- Cedar-lined hanging locker with automatic lighting
- Floating” nightstands with Chiampo Blue marble tops in port & Stbd guest

### ***INTERIOR DÉCOR:***

- Wood paneling and cabinetry in semi-gloss
- Interior ceiling panels removable and finished with Diamond faceted edging. Provides a sharper and structured tailored look. (New for 2014 – design cues from 120)
- Evan Marshall designed interior pilot station and display pod. With matching wood/Ultraleather and “floating” display pod. Ergonomically designed and laid out to enhance pilot experience/performance. (New for 2014 – design cues from 120)
- Ocean Alexander Fresh Air system: with filtered fresh air drawn from outside and vented to lower staterooms for constant fresh, clean air. Makes for a clean and healthy environment that reduces free radicals and increase oxygen levels. (New for 2014)
- High quality European door locks
- Cedar-lined, hanging locker with auto lighting
- Fabric covered walls for lower walkway walls
- Concealed hinges throughout interior cabinets
- Ergonomically designed innerspring mattresses and settees
- Innerspring mattresses for berths (independent his/her construction allowing for disturb free movement during sleep)
- Washer/ dryer (Commercial quality, Energy star washer/dryer) in lower foyer
- \$110,000 décor allowance for salon sofa, carpet, bedspreads, and soft goods
- Flip-up additional storage forward of dinette/under
- Windshield
- Electrical shades for Salon, Dining, and Master
- Interior wood selection/varnish: Walnut/Satin
- Ultraleather for helm/dash/mullion
- Electric Roman Shades for Salon, Dining, Master & Master Head
- Evan K. Marshall 120’ interior styling details

### ***GALLEY:***

- Wood panel and cabinetry

- Galley storage cabinetry w/hidden hinges
- Neptuno Bordeaux marble countertops
- White Aurora marble floor in galley
- Elkay professional series kitchen sink w/Franke pull out tap
- Overhead dish locker forward & aft
- 30" Thermador electric cook top
- 30" Thermador electric oven
- Sub-Zero® Refrigerator/ freezer
- Whirlpool garbage disposal
- 24" Viking Over-the Range Microwave
- 24" Jenn-Air dishwasher
- 15" Whirlpool trash compactor
- Seagull water purifier (ADEX design award winner w/ filtration to 0.1 microns & EPA certification for microbiological purification)
- Custom S/S potholder for cook-top

### ***PILOTHOUSE / DINETTE:***

- Dash with instrumentation
- Wood dinette table
- Dedicated freezer forward of Dinette
- Windshield defrosters
- Phantom screen (for insects + pollen protection) with dedicated wood box for door
- Weather-tight doors to side deck
- Wood flooring in forward dinette
- Pantograph doors in Pilothouse
- Electric Stidd helm seat at PH

### ***HEADS:***

- Wood paneling and cabinetry
- Granite or marble countertops with china sink (VIP, port & stbd guest staterooms: Chiampio Blue marble, MSR: White Aurora marble)
- Granite or marble floor in Heads (VIP: White Aurora marble, port & stbd guest staterooms: Ancient Crepito marble, MSR: White Aurora marble)
- Seamless fiberglass stall shower w/ one-piece glass door. Industry leading seamless one-piece shower tall design provides long term protection against moisture, water intrusion behind the shower panels - leading to foul odors and water damage (Unique OA feature)

- Shower door with Granite/marble frame. Shower door shall use “crystal clear” glass custom made for Ocean Alexander. Providing superior transparency and reflectiveness. Together with custom made for Ocean Alexander “minimalist and transparent water strips” provides a unique Ocean Alexander proprietary “Crystal Shower” (New for 2014)
- Cabinet with mirror door above sink
- Air extraction in each head shall be by low noise extraction fans
- Planus toilet system throughout
- Custom bathroom fixtures
- Granite or marble countertops and back splash in heads with bone china sink (VIP, port & stbd guest staterooms: Chiampio Blue marble. MSR: White Aurora marble)
- Crew quarters w/private head, shower and refrigerator

### **EXTERIOR:**

- Evan Marshall designed exterior pilot console and display pod - with contrasting metallic dark grey and metallic silver and “floating” display pod. Ergonomically designed and laid out to enhance pilot experience/performance (New for 2014 – design cues from 120)
- 2” elliptical 316 Stainless steel handrails & stanchions, main deck 1-1/2” on FB. Elliptical conforms better to human grip than traditional round rails. Provides greater “grip strength” for safety and comfort (Unique OA feature)
- 316 stainless-steel cleats
- Fiberglass stairs to FB from cockpit w/ teak steps
- Elec. stainless-steel sliding doors for salon
- Two teak flag poles, fore and aft.
- Teak and stainless swim ladder, foldable
- Weather-tight door on transom for access to engine room/ crew quarters
- White non-skid fly bridge decks
- 24” Electri-Chef electric barbecue
- Flybridge seat w/storage underneath and high gloss table
- Fiberglass stairway up to Flybridge
- Teak deck for aft deck and walkway to midship
- Teak swim platform w/ teak steps
- High bulwark w/ flush-mounted deck lights, bulwark side doors for boarding
- Side boarding gates in cockpit and midship
- Recessed boarding ladder on starboard gunnel
- Bow seating with concealed pop-up lighting and hi- low table converts to sun pad
- Flip down 24” TV on FB
- Custom exterior canvas and windshield mesh covers
- Flybridge deck outboard storage increased by 54% via additional storage lockers on port and starboard where possible (New for 2014)
- Exterior ceiling panels removable and finished with Diamond faceted edging. Provides a

sharper and structured tailored look. Also allows for easy service of navigational electronics and plumbing runs. (New for 2014 – design cues from 120)

- 4-person lighted Jacuzzi w/ custom fiberglass enclosure on boat deck
- Four Underwater lights
- S/S transom gates for pets/children protection
- ACR searchlight with 2 remotes on FB, PH
- Spreader lights under wing mast
- Manual awning with custom made S.S. poles and marine-grade exterior “Batyline Crème” Ferrari mesh Fabric
- Sunbrella for exterior settee

### ***TURN KEY (New for 2014):***

- Full fuel tanks upon initial delivery
- Safety first aid kit
- Fenders, lines, flare kit; throw ring, fire extinguishers, and bell
- Spare Parts package (Spare: Bilge pump, LED light, Pencil Zinc, Engine/ Generator filter, Wiper blades, Touch up paint, Fuses, Engine manuf. Spare parts kit, Generator manuf. spare parts kit, Breakers, Sump pump box, Float switch, Hydraulic gas-strut, Vimar outlet, GFI outlet, Vimar switch, Wood veneer)
- Wheel Puller for ship propellers
- Chocks
- 15’ Tender with 70HP”
- 10-man life raft in valise bag
- 2 sets of bed linens on all berths with pillows and towels
- Dinner china including dinner/salad/dessert plates, soup bowls, tea cup and saucers, casserole dish, salt & pepper shakers
- Flatware including steak knife, dinner knife, fork, spoon and dessert/teaspoon, salad forks, serving spoons & fork
- Table placemats, napkins, and water/white/red/champagne wine glasses
- Galley cookware/pans.
- Toaster, electric mixer, measuring cup, rubber/metal/ plastic spatulas, mixing bowls
- Chef knives, cutting boards, coffee machine, iron

## **Construction**

### ***GENERAL:***

- Vinylester resin with high-density structural foam. High density allows for high temperature

resistivity and particular advantage in thermal and acoustic insulation. Usually only found in vessels 120'+ (New for 2014)

- Longitudinal and lateral fiberglass stringers filled with high-density foam
- Ocean Alexander employs various techniques to reduce sound and vibration. Focusing on providing a quiet and comfortable yachting environment through various proprietary techniques of controlling sound and noise transmission. Some of these techniques include, multiple insulation barriers including reflective materials, absorptive materials, dampening materials, air pockets and flexible and isolation mounts. Ultimately resulting in vibration/sounds levels that are industry leading and at times 1/2 to 1/10 of ISO-6954 requirements (Unique OA feature)
- Fiberglass with infusion lamination manufacturing technology
- Reinforced collision bulkhead
- Frameless window
- All exterior hardware to be S/S 316 or to manufacturer requirements
- Weather-tight bulkheads with further sound and temperature insulation
- Painted Exterior Surface with professional grade
- Alexseal polyurethane paint and epoxy based primers. Highest gloss and color retention compared with gelcoat or other paint brands (Unique OA standard feature, not an optional upcharge like competitors)
- Weather-tight bulkheads with further sound and temperature insulation
- Marine grade aluminum beams for floors, walls and ceiling. Provides greater rigidity and monolithic structure. Prevents movements and “creaky” sounds while underway
- Use of cross-knit directional carbon fiber in high stress area for added structural integrity and torsional strength

### ***HULL / BOTTOM:***

- Black boot top stripe
- Interior structural components all bonded to hull
- Three coats of Seahawk primer, hi-build epoxy barrier coat and covered with three coats of Seahawk self-polishing bottom paint (Unique OA feature, optional on competitors)
- Fiberglass rub rail w/ S/S striking plate
- Bronze through-hull fitting

### ***DECK / PILOTHOUSE:***

- White non-skid fiberglass decks
- Fiberglass settee with table on aft deck

- Swim ladder
- Fiberglass staircase w/ teak steps from Aft Deck to Flybridge
- Wet bar with sink and bar refrigerator on flybridge
- Wet bar with sink and bar refrigerator on aft deck
- Updated exterior profile. Provides a refreshed and sharper look in keeping with latest international design direction. (New for 2014 - design cues from 120)
- Swing open 24" TV on aft deck
- Aft-deck custom ceiling feature

## Mechanical

---

### **MAIN ENGINES:**

- Twin CAT® C-32 ACERT 1925HP engines
- Engine alarm system, for low oil pressure and high water temperature
- S/S engine beds
- Lube oil change system for engines and generators with approximately 45-gallon lube tank
- Delta T intake/exhaust fans with variable frequency drives shall be mounted to facilitate the pushing and/or pulling of air through the machinery spaces and the providing of a high rate of air exchange. Ducts shall have fire dampers installed with manual/automatic triggering that shall be tied into the machinery shut down circuits. Ducts in way of interior living space shall be insulated and soundproofed. System of Delta-T water separator grills used on intake and exhaust sides of system
- Adjustable/Reversible Delta T fans for engine exhaust located on superstructure instead of hull side. Maximizes water protection and salt spray, resulting in safer and lower maintenance ownership (Unique OA feature)
- Stainless steel rails on side of engine and stainless steel engine mounting plates
- Stabilizer with power takeoff from both engines
- Two control stations: FB & PH, with complete engine instrumentation with lighted, modern switches

### **STEERING / CONTROL:**

- Hydraulic steering system
- Steering control station with complete instrumentation
- S/S rudders w/integrated zinc plates
- Dripless seal for rudderpost
- High performance computer designed and machined NiBrAl propeller - Class "S"
- Interior steering wheel Ultraleather wrapped (same color as dash), exterior stainless

steering wheel on FB

- Maintenance free “dripless” seals for engine shaft packing glands
- Propeller shaft Aqua 22HS. 22HS is a high-grade austenitic alloy stainless steel that provides superior corrosion resistance (comparable to Aqua 22) along with excellent toughness and high strength (comparable with Aqua 17). A no compromised approach adopted by the navies around the world
- Stidd® mechanical helm seats

### **GENERATOR:**

- Kohler® 53KW genset includes 5 year/2,000 hour warranty (2x)
- Generator exhausts to be water-drop type per “Centek”, “Marine Exhaust Co.” or equal
- Generator set resiliently mounted and installed with sound shield & vibration dampener

### **WINDLASS / MOORING:**

- Hydraulic windlass, VW4000C
- Dual stainless pool anchors 350 lbs. from hull sides w/ 300ft anchor chain (1/2" HT) & chain stoppers.
- Integral roller and chain stopper with Maxwell® anchor winch
- Two Maxwell® VC2500 vertical electric rope winches for Aft Deck
- Reinforced anchor platform and anchoring system
- Chain counter
- Hands-free anchor chain wash system – allows for cleaning of chain during anchor operation (New for 2014)

### **THRUSTER / STABILIZERS:**

- Sidepower® Vector Fin (DAME 2013 award winner) hydraulic 16 sqf hydraulic stabilizer fins w/zero speed stabilization function and 55HP bow and 40HP stern thrusters

### **OTHER:**



- Color-coded piping system for easy identification
- Hydraulic 2500 lbs. yacht crane
- Fire extinguisher system with engine-shutdown feature
- Sea Recovery 1400G/Day water maker w/auto fresh water flush operation, PH Neutralizer, UV sterilizer and Commercial Pre-filter (US Coast Guard 14 person unit)
- Kahlenberg heavy-duty horn
- All engine room and bilge spaces shall be primed and top coated with polyurethane paint system
- Hepworth® heavy-duty commercial grade pantograph windshield wipers & washers w/ intermittent function
- Detailed stringers in engine room & lazarette
- Air compressor in engine room w/ multiple quick disconnect outlets
- Ocean Alexander proprietary “dry bilge ventilation system” with dedicated bilge exhaust to outside. This provides constant airflow to keep the bilges dry and mildew free. Any moisture from condensation is evacuated outside the yacht to keep a clean and healthy cruising environment. (New for 2014)

## Plumbing

---

### ***FRESH WATER SYSTEM:***

- 2mm thickness 316 S/S water tank w/ sight gauge
- Headhunter pressure fresh-water system
- Fresh-water outlet with hose for engines & generator
- Cold fresh-water wash down at bow, stern and boat deck
- Dockside water connection

### ***HOT WATER HEATER:***

- Two 40-gallon water heater with high-density fiberglass insulation w/ high efficiency heating element

### ***FUEL SYSTEM:***

- 4.5mm thickness 5052 Aluminum fuel tanks with sight gauges and tested to International Standards 33CFR 510(a) w/ high and low fuel level alarm system

- Dual Racor® fuel/water separator with Y-valves for engine & generator
- Gulfcoast Fuel polishing system based on US Military Abrahams-M1 Tank design
- Sight gauges for all tanks
- Exceeding industry safety standards with Flame arrestor installed in fuel system. Design to prevent ignition of fumes during fueling/heavy operation. Usually found only in classed vessels (New for 2014)
- Fuel system with venting and “catchment system” designed for burps or overflow accidents

### ***HOLDING TANK SYSTEM:***

- ECOmar waste treatment system (600Gal/day)

### ***BILGE / DISCHARGE:***

- Oversized drains to overboard
- Automatic bilge pump - The vessel shall be outfitted with automatic bilge pump with manual and automatic switches in each space as divided by weather-tight bulkheads. High water alarms will be mounted in each of these bilge zones
- High water bilge alarm at every Rule® bilge pump station
- Dry bilge area arrangement in center engine room

### ***DECK / FLYBRIDGE:***

- Both side filler for fuel tanks with individual tank
- Vents

## **Electrical**

---

### ***AC / DC SYSTEM:***

- AC outlets throughout
- All primary AC & DC electrical wiring is appropriately labeled throughout the yacht
- GFI (110V) AC outlet

- 24 Volt system
- Engine battery isolation switches
- AGM Batteries with 40F to 140F operating temp and industry leading low self-discharge rates 1 to 3%
- Octoplex NEMA 2000 electrical control system. Based on aerospace technology for remote activation, control and status reporting of all AC and DC breakers. Monitors all power sources (AC and DC) for voltage, frequency and amperage abnormalities and provide visual and audio alerts. Includes enhanced circuit breaker functionality with no-load indication, dimming and usage information with touch screen monitors that are user reconfigurable. Brown-out configurable control through auto load shedding is included where operator designated equipment (e.g. navigation and other essential systems) remains powered-on while automatically switching other systems off. Octoplex NEMA 2000 Vessel system monitor system. Provides main access doors, tank level, bilge level and battery monitoring of current, voltage and temp

### ***AIR CONDITIONING:***

- Cruisair® chilled water system air conditioning w/ air handlers for central air conditioner, rated for extreme Tropical climates (Reverse Cycle capable for operating down to 40F)
- Refrigerant type is accepted worldwide under the Montreal Protocols
- Dedicated engine room air conditioning
- Where possible A/C exits from custom made ceiling panels hidden from view. Shortens A/C ducting thus improving efficiency and speed of cooling by over 20%. Also reduces dB reading by over 7 dB (New for 2014 – design cues from 120)
- FB air conditioning 36,000 BTU

### ***SHORE POWER CONNECTER:***

- Shore power receptacle 2 x 100 AMP on transom with cablemaster

### ***LIGHTING:***

- 24V LED lights (Aerospace quality, specially tuned color temperature for Ocean Alexander)
- Convenience lights
- Flood light at back of boat deck

- International navigation lights

**CHARGER:**

- Victron® 100 AMP Charger
- Victron® battery charger

**BATTERY:**

- Heavy-duty batteries
- Battery paralleling system w/ control switch
- Service battery switch

**BONDING SYSTEM:**

- Bonding system throughout
- The vessel's bonding and grounding systems shall include copper straps secured to the hull and running the full length of the vessel parallel to centerline. Engines, generators, metallic through hulls, strainers, and pump bodies shall be connected to the bonding strap using 8 AWG wire minimum or equivalent

**NAVIGATION PACKAGE:**

- FURUNO Integrated with NMEA2000
- 19" Hatterland Series X Marine Monitors PH (3x) and FB (3x) (New for 2014)
- Furuno NavNet Black Box TZTBB Processor
- Furuno 12KW 72n.m UHD Digital Radar Array
- Furuno GP330B GPS/WAAS NMEA 2000 Sensor
- Furuno DFF1 Network Sounder with Furuno Digital
- Filtering

- Furuno BBWX2 Weather Receiver
- Furuno AIS Black Box Class B Full Duplex
- Icom 25W VHF with 30W hailer
- Furuno NavPilot 700 Autopilot
- Maretron Ultrasonic Wind/Weather
- Maretron GPS200 GPS/WAAS
- Furuno TZ Explorer MaxSea TimeZero Explorer software
- KVH TracVision HD7 for DIRECTTV® HDTV
- Axis Marine Camera in Engine Room (2x) and Aft Deck (1x)
- UPS electrical protection for navigation computer
- DIRECTTV® receiver
- Ritchie Compass 5"

### ***N2KVIEW SAFETY & SECURITY MONITORING PKG:***

- These security/safety automatic monitoring and alert abilities include using Apple iPad or Android for remote access to operate, view, and alarm Octoplex data and navigation system with a fully customizable screen layout, and remote notification (cell phone) accessibility
- These monitoring abilities include: Main Engines and Generators, AC Monitoring, DC House Bank Battery Monitoring, Engine Room Weather-tight Bulkhead Doors, Tank Levels, Fire System, Bilge Level (High- water), Exterior Door Sensors

### ***OTHER:***

- Vimar™ switches and outlets
- Smart Y-adaptor
- ASEA converter package with capability for European 220V cruising
- SonicShields using ultrasonic technology to kill/chase away any algae/barnacle/mussels etc. that may adhere to hull/props/shaft etc. Will allow for longer periods, up to twice as long, between bottom paint replacement and ensure cleaner bottom thus less drag in the water
- Panasonic Intercom System – includes Panasonic phone system and Digital Panasonic Phones for connection in MSR, Guest Staterooms, Crew, Salon, Galley
- Wireless Yacht Controller remote

---

## Исключения

---

При продаже яхты исключаются личные вещи владельца.

---

## Отказ от ответственности

---

Компания предоставляет описание судна или яхты добросовестно, но не может гарантировать точность этой информации, а также не ручается за техническое состояние. Покупатель должен проинструктировать своих агентов или оценщиков исследовать представленную информацию более подробно, по собственному желанию. Продажа судна или яхты, изменение цены или снятие с продажи будет происходить без предварительного уведомления.

# ФОТОГРАФИИ

**Сокпит**



**Aft Deck**



**Aft Deck**



**Aft Deck**



**Aft Deck**



**Aft Deck**



Salon



Salon



Salon



Salon



Salon



Formal Dining





**Formal Dining**



**Formal Dining**



**Salon Storage / Bar**



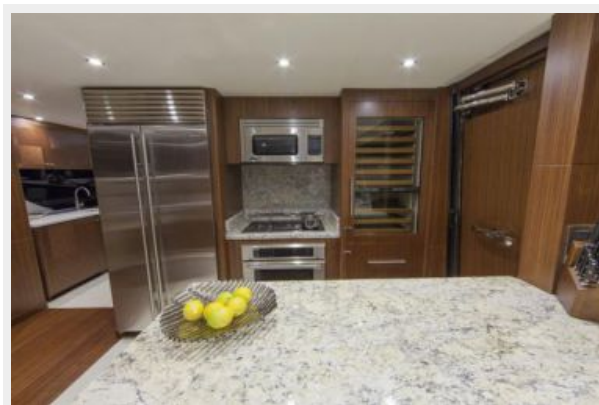
**Day Head**



**Galley**



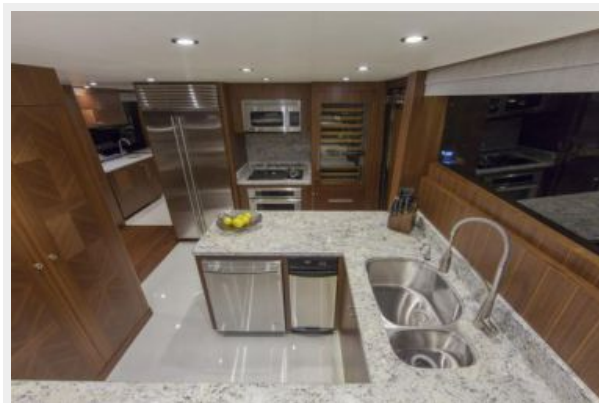
**Galley**



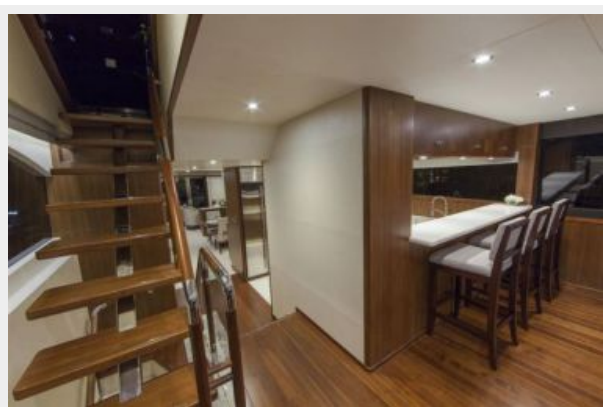
**Galley**



**Galley**



**Galley / Staircase to Flybridge**



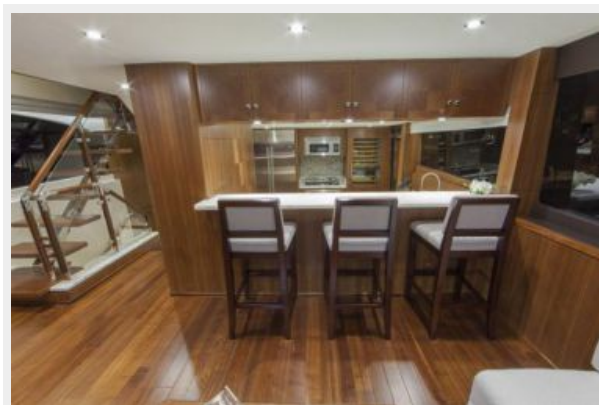
**Galley Dinette**



**Galley Dinette**



**Galley Dinette**



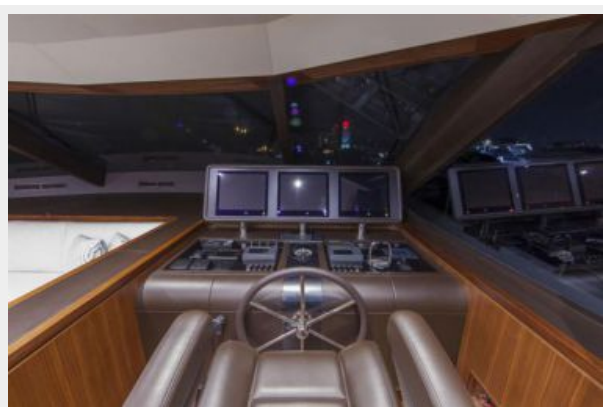
**Galley Dinette**



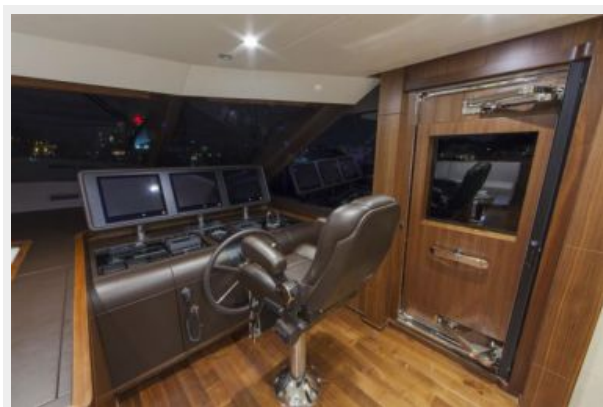
**Galley Dinette**



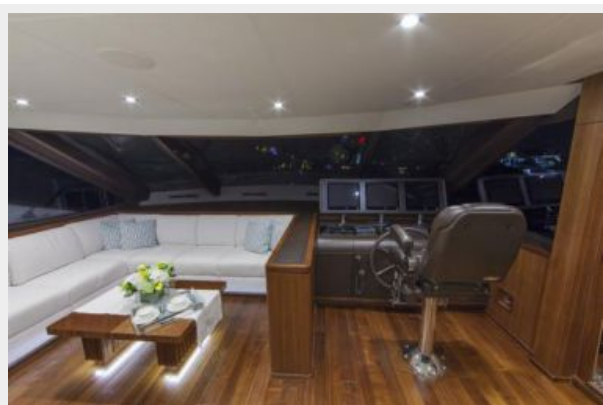
**Pilothouse Helm**



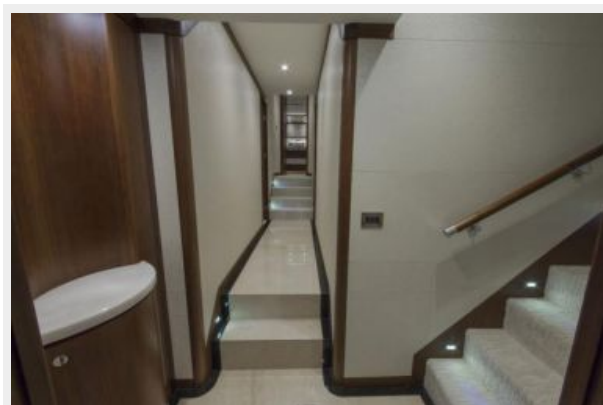
**Pilothouse Helm**



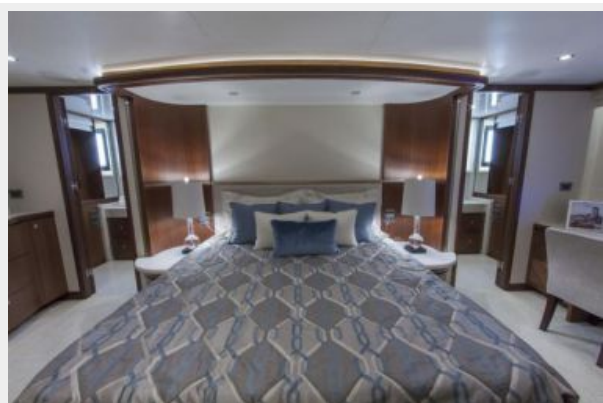
**Pilothouse / Galley Dinette**



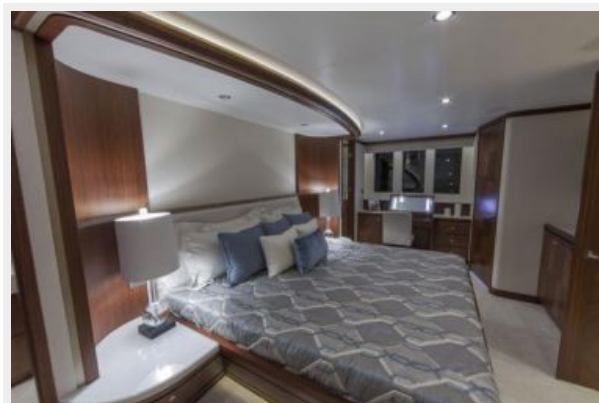
**Companionway**



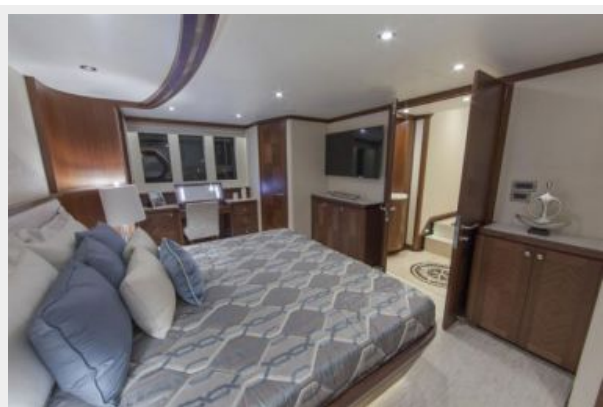
**Master Stateroom**



**Master Stateroom**



**Master Stateroom**



**Master Stateroom**



**Master Stateroom Closet**



**Master Head**



**Master Head**



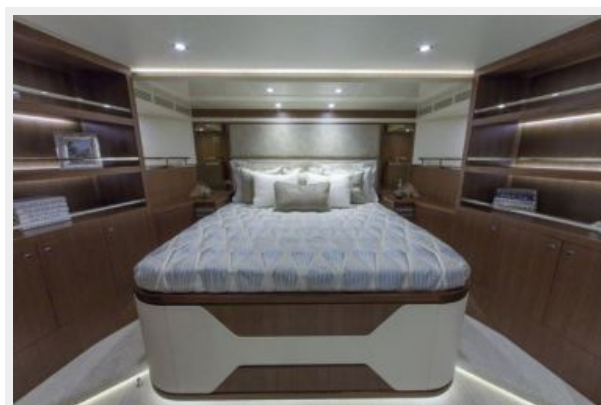
**Master Head**



**Master Head**



**VIP Stateroom**



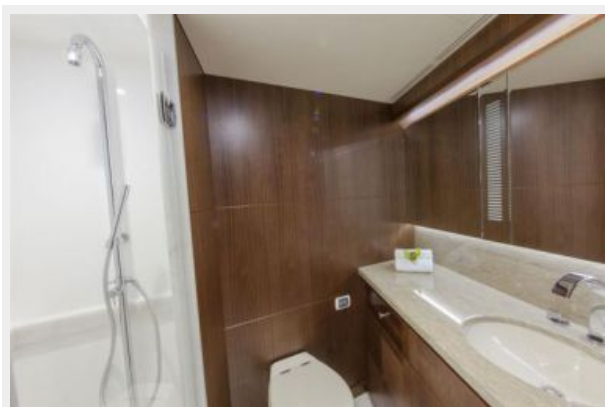
**VIP Stateroom**



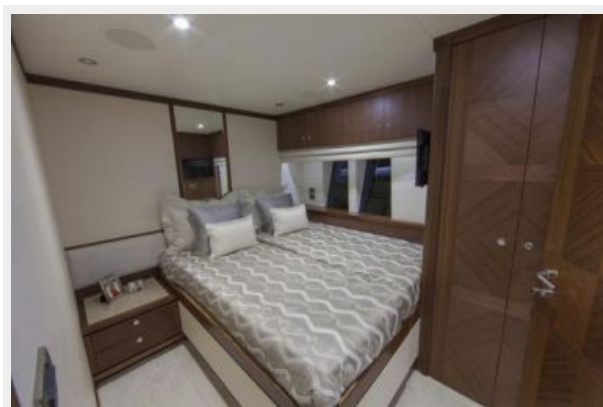
**VIP Stateroom**



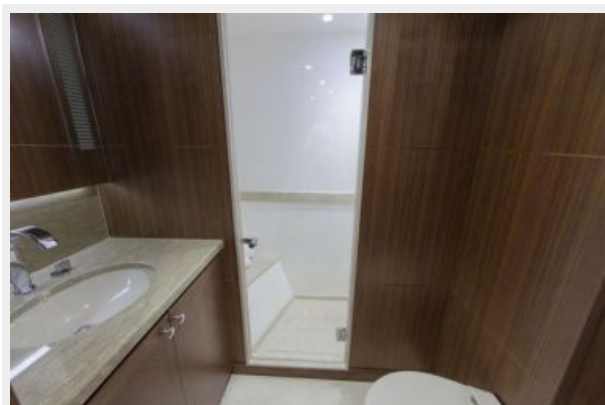
**VIP Head**



**Guest Stateroom - 1**



**Guest Head**



**Guest Stateroom - 2**



**Guest Head - 2**



**Crew Quarters**



**Crew Quarters**



**Captain's Cabin**



**Captain's Cabin**



**Head**



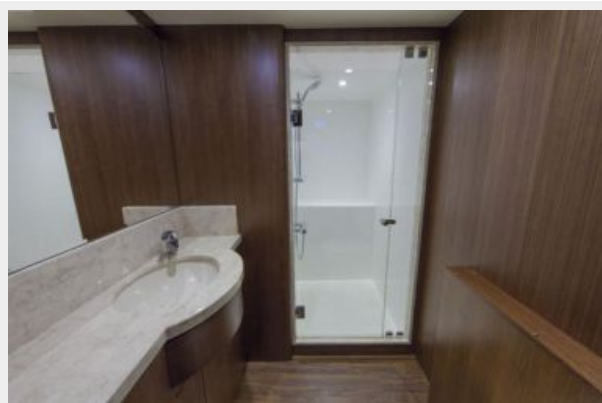
**Crew Cabin**



**Crew Cabin**



**Head**



**Lazarette**



**Forward**



**Bow**





**Bow Seating**



**Side View**



**Side View**



**Flybridge**



**Flybridge**



**Flybridge**



**Flybridge Helm**



**Flybridge Helm**



**Flybridge Seating**



**Flybridge Bar**



**Flybridge Seating**



**Flybridge**



**Boat Deck**



**Boat Deck**



**Engine Room**



**Engine Room**



**Engine Room**



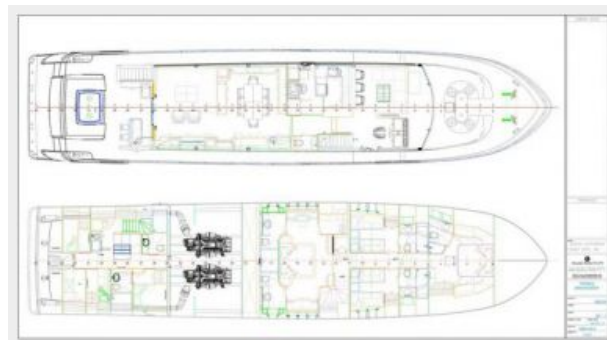
**Engine Room**



### Layout



### Layout



# КОНТАКТЫ

---

Андрей Шестаков (Andrey Shestakov) – ведущий яхтенный брокер отдела продаж яхт и судов компании Shestakov Yacht Sales Inc. Официальный представитель Shestakov Yacht Sales Inc. для русскоговорящих клиентов в центральном офисе компании в Майами/Форт Лодердейл/Флорида/США.

## Контактная информация

---

Email: [andrey@shestakovyachtsales.com](mailto:andrey@shestakovyachtsales.com)

Web: [shestakovyachtsales.com](http://shestakovyachtsales.com)

## Телефоны

---

Краснодарский край: **+7(918)465-66-44**

США, Майами, Флорида: **+1(954)274-4435**

## Время работы

---

Понедельник – Суббота: **9:00 - 21:00**  
EDT

Воскресенье: **Закрито**

## Адрес

---



Harbour Towne Marina, 850 NE 3rd St,  
STE 213, Dania, FL 33004