

HUEY'S ISLAND II — CABO



Builder: CABO

Year Built: 2008

Model: Sport Fisherman

Price: PRICE ON APPLICATION

Location: United States

LOA: 48' 0" (14.63m)

Beam: 15' 8" (4.78m)

Min Draft: 4' 10" (1.47m)

Cruise Speed: 31 Kts. (36 MPH)

Max Speed: 36 Kts. (41 MPH)

Our experienced yacht broker, Andrey Shestakov, will help you choose and buy a yacht that best suits your needs HUEY'S ISLAND II — CABO from our catalogue. Presently, at Shestakov Yacht Sales Inc., we have a wide variety of yachts available on our sale's list. We also work in close contact with all the big yacht manufacturers from all over the world.

If you would like to buy a yacht HUEY'S ISLAND II — CABO or would like help answering any questions concerning purchasing, selling or chartering a yacht, please call +1(954)274-4435

TABLE OF CONTENTS

TABLE OF CONTENTS	2
SPECIFICATIONS	4
Overview	4
Basic Information	4
Dimensions	4
Speed, Capacities and Weight	4
Accommodations	4
Hull and Deck Information	5
Engine Information	5
DETAILED INFORMATION	6
Comments	6
Recent Upgrades, 10/14	6
Salon	6
Galley	7
Master Stateroom	7
Guest Stateroom, Forward	7
Guest Stateroom, Starboard	8
Guest Head	8
Electronics & Equipment	8
Flybridge Equipment	9
Cockpit	9
Custom Bausch Hardtop	9
Fishing Equipment	10
Engine & Mechanical Equipment	10
Exclusions	11
Exclusions	11
Disclaimer	11
PHOTOS	12

CONTACTS	17
Contact details	17
Telephones	17
Office hours	17
Address	17

SPECIFICATIONS

Overview

New Electronics, TVs, batteries, outriggers etc. (10/14)

Basic Information

Category: Sport Fisherman

Sub Category: Convertible

Model Year: 2008

Year Built: 2008

Country: United States

Vessel Top: Hardtop

Fly Bridge: Yes

Dimensions

LOA: 48' 0" (14.63m)

Beam: 15' 8" (4.78m)

Min Draft: 4' 10" (1.47m)

Speed, Capacities and Weight

Cruise Speed: 31 Kts. (36 MPH)

Max Speed: 36 Kts. (41 MPH)

Displacement: 45000 Pounds

Water Capacity: 100 Gallons

Fuel Capacity: 1020 Gallons

Accommodations

Total Cabins: 3

Hull and Deck Information

Hull Material: Fiberglass

Engine Information

Engines: 2

Manufacturer: MAN

Model: CR

Fuel Type: Diesel

DETAILED INFORMATION

Comments

All the right extras and maintained to perfection with only 849 original hours!

The 48' Cabo with 1100's is an excellent performer with great range. With this engine package this vessel will cruise at around 31 knots and burn approximate 63 gph and give you 36 knots at WOT.

She has Sea Recovery, watermaker, 30,000 BTU custom Bridge A/C, Release Marine helm chairs, Sat TV, under water camera, under water strobe lights, under water lights and much, much more!In

In October 2014, new electronics installed, new bottom job, new Rupp outriggers, new TV's, rebuilt davit, new marine batteries and (4) new custom mattresses!

Recent Upgrades, 10/14

- Bottom paint
- New Rupp outriggers
- 4 custom-made mattresses
- All new TVs
- KVH Satellite antenna for DirecTV
- (6) 31 AGM Marine batteries (Dec 2014)
- Davit rebuilt; new control box Garmin Electronics – Installed Oct 2014:
- (2) 8212 Displays
- AIS 600
- 4 KW open array radar 4'
- GSD26 CHIRP sounder
- Weather 52
- B265 Broadband CHIRP
- Raymarine i50 depth sounder w/ thru hull transducer & back-up

Salon

- L-shaped ultra leather sofa with storage below
- Custom teak dinette table with maple inlay
- Custom teak table with storage box below
- Flat screen TV above dinette
- Bose lifestyle 38 stereo surround sound system upgrade
- Teak and Holly sole

- Bound carpet
- Central vacuum off companionway
- Silhouette blinds with fabric wrapped valances
- Entertainment center to starboard
- Raised electric panel with icemaker below

Galley

- Ceramic cook top (2) burner, recessed w/ corian
- (2) Sub-Zero undercounter freezer
- (2) Sub-Zero undercounter refrigerator
- Corian counter tops w/ custom sea rails
- Corian sink
- Garbage Disposal
- Microwave/Convection Oven
- Positive latched used on cabinet doors and drawers
- Ventilation fan
- Water Gauge
- Teak and holly flooring
- Large storage compartment awlgripped snow white below Galley floor

Master Stateroom

- Island double berth w/custom 5" mattress (new 10/14)
- End tables (2) w/ lamps
- AM/FM/CD/DVD stereo system
- Reading lights
- Flat screen TV flush-mounted, trimmed in teak w/individual SAT TV control
- Flush mount wall clock
- Hanging locker, Cedar lined
- Lift up storage under berth Master Head:
- Separate stall shower w/automatic shower sump
- Glass shower door
- Vanity w/corian top & mirrored cabinet
- Storage below sink cabinet
- Teak flooring
- Sealand Vacuflush head
- Positive latches on all cabinet doors & drawers

Guest Stateroom, Forward

- Double bed with new custom 5" mattress (10/14)
- Electronics wall safe
- Flush mount wall clock
- Storage compartments and large drawers below bed
- Flat screen TV with individual SAT TV control
- Adjoining private head
- Starboard rod storage locker
- Stereo speakers with volume control
- Access to anchor rope locker
- Fore deck hatch with retractable shad

Guest Stateroom, Starboard

- Upper and lower berth arrangement
- Drawers under lower berth
- Reading lights, DC
- Vinyl headliner
- Hanging locker, cedar lined
- Washer/Dryer combo in guest stateroom

Guest Head

- Corian counter tops
- Positive latches used on cabinet doors and drawers
- Head - Sealand Vacuflush
- Mirrored vanity cabinet
- 110 volt blower system
- 110 volt outlet
- Separate stall shower with automatic shower sump pump
- Storage cabinet with teak face below sink

Electronics & Equipment

(2) Garmin 8212 Displays (new 10/14) Garmin AIS 600 (new 10/14) Garmin 4KW open array radar 4' (new 10/14) Garmin GSD26 CHIRP sounder (new 10/14) Garmin weather 52 (new 10/14) B265 Broadband CHIRP (new 10/14) Raymarine i50 depth sounder with thru hull transducer & back-up Custom Bausch tower and hardtop w/ integrated overhead, navigation and deck spotlight Dual Raymarine E120 GPS chartplotters w/ latest software upgrades Simrad autopilot Integrated Raymarine radar Icom IC-M604 VHF w/ galley handset Integrated Flir night vision Raymarine ST40 depth display Clarion audio system w/ iPod input KVH Tracvision w/ 3 receivers (new antennas 10/14) Remote ACR spotlight 30,000 BTU helm A/C system (2011)

Side-power bow thruster New under water hull bottom adjustable strobe lights, blue/white (2011)
New under water stern camera (2011) Integrated salon, engine room cameras Sea Recovery
Aqua Matic watermaker system Custom built ladder to access hardtop Helm cover w/ air vent cut-outs (2011)

Flybridge Equipment

- Custom Bauch tower & hardtop
- Seacrylic enclosure (2011)
- 30,000 BTU helm A/C (New 2011)
- Compass with light
- Fire and bilge water level alarms
- Palm Beach Helm Pod
- Helm chairs upgraded to Release Marine Teak with 4" stainless pedestal
- Forward storage locker
- Large electronics console
- Stereo speaker with volume control
- Bench seat forward of console with cushions and storage
- Chromed bronze helm wheel
- Complete engine instrument panel, electronic display, polished stainless steel

Cockpit

- Access door to engine room from cockpit
- Bait tank, 48 gallons in transom with window and lights
- Bait prep center port side
- Cockpit combing pads
- Fish boxes, large capacity, insulated with Macerator pump-out system
- Courtesy lighting under gunwales
- New outriggers (10/14)
- (5) Rod holders
- Rod-Gaff racks starboard
- Rod holders
- Washdown, fresh and salt

Custom Bausch Hardtop

- Bausch half tower molded top
- Lights quartz 200W 4in1 with stern euro style installed aft
- Dimmers on overhead lights
- (6) Rod rocket launcher

- Lights; Recessed Led red (2)
- Lights; Recessed Led white (4)
- (4) sided enclosure (2011)

Fishing Equipment

- New outriggers ('14)
- 110V Cockpit freezer
- Transom mounted fishbox with window
- Bait prep station with tackle storage drawers, white corex
- Storage boxes under Gunwale
- Transom fishbox plumbed for livewell
- (2) large forward and aft fishboxes in cockpit
- Underwater lights

Engine & Mechanical Equipment

- 800lb Davit (rebuilt 10/14)
- Fuel polishing system
- Sea recovery Aqua Matic water maker
- Auxiliary, 12VDC distribution panel
- Bilge pumps
- Bonding system with transom zinc plate
- Electric fuel priming pumps
- Electronic controls with trolling valves, engine synchronizer and electric backup
- Emergency Y-valve bilge pump
- Engine alarm system
- Bilge, bright white linear polyurethane finish
- Bilge pumps, (4)DC automatic/manual
- Engine room sound insulation, high density barrier/foam
- Westerbeke 15KW Generator upgrade
- Engine room blowers (2) 24VDC
- Fire extinguishing system, automatic
- High water bilge alarms
- Oil change system
- Power steering
- Propellers (4) bladed Veem
- Stuffing boxes, drip less seal type
- Trim tabs
- Water heater stainless steel 11 gallon
- Fresh water pump, AC, with backup fresh water pump, DC

Exclusions

- All owner's personal items
- Fishing equipment
- Artwork
- Dinghy

Exclusions

Owner's personal belongings.

Disclaimer

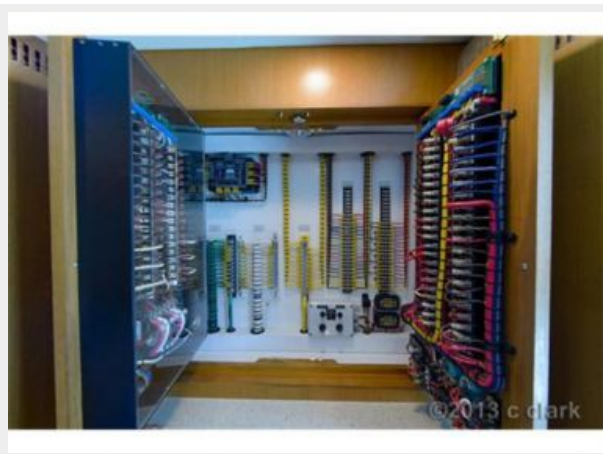
The Company offers the details of this vessel or yacht in good faith but cannot guarantee or warrant the accuracy of this information nor warrant the condition of the vessel. A buyer should instruct his representatives, agents, or his surveyors, to investigate such details as the buyer desires validated. This vessel or yacht is offered subject to prior sale, price change, or withdrawal without notice.

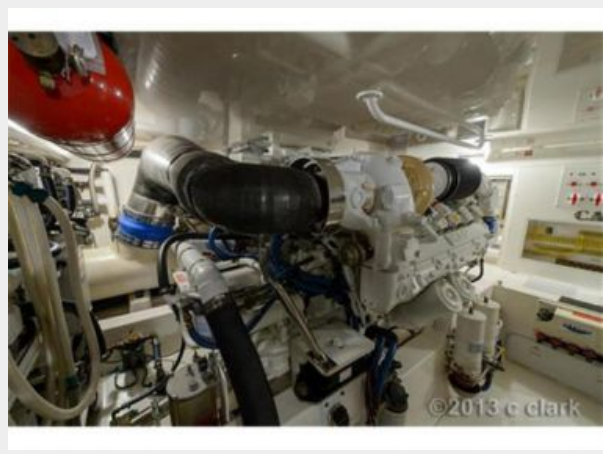
PHOTOS











CONTACTS

Andrey Shestakov, leading yacht broker of the sales department of Shestakov Yacht Sales Inc. Shestakov Yacht Sales Inc., the official representative of the Miami/Fort Lauderdale FL headquarters.

Contact details

Email: andrey@shestakovyachtsales.com

Web: shestakovyachtsales.com/en/

Telephones

USA: +1(954)274-4435

Office hours

Monday – Saturday: **9:00 - 21:00** EDT

Sunday: **closed**

Address



Harbour Towne Marina, 850 NE 3rd St,
STE 213, Dania, FL 33004