

LITTLE MISS MAGIC — GRAND BANKS



Builder: GRAND BANKS

Year Built: 1995

Model: Motor Yacht

Price: PRICE ON APPLICATION

Location: United States

LOA: 46' 0" (14.02m)

Beam: 14' 7" (4.44m)

Min Draft: 4' 6" (1.37m)

Our experienced yacht broker, Andrey Shestakov, will help you choose and buy a yacht that best suits your needs **Little Miss Magic — GRAND BANKS** from our catalogue. Presently, at **Shestakov Yacht Sales Inc.**, we have a wide variety of yachts available on our sale's list. We also work in close contact with all the big yacht manufacturers from all over the world.

If you would like to buy a yacht **Little Miss Magic — GRAND BANKS** or would like help answering any questions concerning purchasing, selling or chartering a yacht, please call **+1(954)274-4435**

TABLE OF CONTENTS

TABLE OF CONTENTS	2
SPECIFICATIONS	5
Basic Information	5
Dimensions	5
Speed, Capacities and Weight	5
Accommodations	5
Hull and Deck Information	5
Engine Information	5
DETAILED INFORMATION	6
Accommodations	6
Remarks	13
Exclusions	14
Disclaimer	14
PHOTOS	15
Bow Anchor Pulpit	15
Bow Area	15
Cockpit	15
Cockpit Side View	15
Deck Custom Storage Box	15
Port Saloon Aft	16
Saloon Looking Aft	16
Saloon Looking Forward	16
Saloon	16
Bar Cabinet Drink Refer w Icemaker	17
Bar Cabinet	17
Galley Appliances	17
Galley	17
Pantry Freezer	18

Galley	18
Pantry Storage	18
Pantry	18
Parts Storage	19
Lower Helm	19
Master Head	19
Master Shower	19
Master Stateroom Bureau Port	20
Master Stateroom Custom Storage Starboard	20
Master Stateroom Door to Cockpit	20
Master Stateroom Forward	20
Guest Head Shower	21
Master Stateroom Queen	21
Guest Head	21
Guest Stateroom Aft Port	21
Guest Stateroom	22
Flybridge Dinette Seating	22
Flybridge Helm	22
Flybridge Helm	22
Flybridge Overhead Lighting	22
Flybridge Thicker Cushions	22
Flybridge	23
LleBroc Helm Seat New	23
LleBroc Port Helm Seat New	23
New Frigid Rigid ReferFreezer	23
Radar Arch	23
Port Side Deck	23
Starboard Side Deck	24
Utility Room	24

Water Maker	24
Engine Room Aft	24
Engine Room Port Tank	25
Engine Room Port	25
Engine Room Starboard Fuel	25
Engine Room Starboard	25
Engine Room Water Maker Stabilizer Hydraulics	26
Engine Room Wiring	26
CONTACTS	27
Contact details	27
Telephones	27
Office hours	27
Address	27

SPECIFICATIONS

Basic Information

Category: Motor Yacht

Model Year: 1995

Year Built: 1995

Country: United States

Dimensions

LOA: 46' 0" (14.02m)

Beam: 14' 7" (4.44m)

Min Draft: 4' 6" (1.37m)

Speed, Capacities and Weight

Water Capacity: 278 Gallons

Fuel Capacity: 600 Gallons

Accommodations

Total Cabins: 2

Hull and Deck Information

Hull Material: Fiberglass

Engine Information

Engines: 2

Manufacturer: Caterpillar

Model: 3208TA

Engine Type: Inboard

Fuel Type: Diesel

DETAILED INFORMATION

Accommodations

Vessel Walkthrough

You gain access through either a port or starboard side door. The large galley is up and forward on port. This area is like most homes as the galley is part of the living space, not down steps and separate. The galley has been completely customized for optimum use and spaciousness.

The saloon's settee is richly upholstered in black Ultraleather with custom cushions that sweep along the STBD aft side and corner. It's large and inviting. Forward is a custom bar cabinet with drink refrigerator and ice-maker.

The lower helm features a side door for easy access to the STBD side deck.

The forward third of this boat has been customized for optimum use for a cruising couple or liveaboard. Next to the steps going forward is a large storage compartment full of spare parts. Forward of that is a large pantry that has multiple large shelved storage cabinets. There is a counter with electrical service for a large coffee maker or other appliances. The Grunert freezer is located there as well for extended food storage.

The guest cabin is in the boats bow area and is very nice sized with a V-berth, hanging locker and drawer storage. Aft on STBD is the guest/day head with separate stall shower. Aft of head is the utility room that has a stacked separate washer and dryer as well as additional storage. The forward cabin is separated from the pantry/utility area by a teak door for ultimate guest privacy.

Items throughout include teak parquet sole, Hunter Douglas shades in saloon and aft cabin, LED lighting, low wattage use bulbs, beveled mirrors, teak cabinetry.

Saloon

- Tinted windows
- Refinished teak parquet sole in excellent condition
- Port and STBD entry doors
- 32" flatscreen HDTV in custom teak cabinet
- CD/Blu Ray/DVD players – new 2009
- Custom cabinet houses CD, DVD
- Electrical connections for cell phone and laptop computer
- L-Settee with black Ultraleather upholstery, custom cushions – new 2010
- (3) Settee cushions are hinged and lift up for storage under
- Teak high-low yacht table has (2) leaves that expand for dining
- Grand Banks teak arm chair upholstered in black Ultraleather
- Custom teak bar cabinet on STBD with liquor drawer and wine bottle storage
- U-Line refrigerator with built-in icemaker

- 12 windows, 4 that slide open
- Custom Hunter Douglas solar blinds for side windows
- Clarion Stereo/CD/Satellite receiver with remote on flybridge, multiple speakers in saloon, master STRM and (4) new Kenwood speakers on flybridge
- Marineair air-conditioner with reverse cycle heat (unit replaced original) with updated control panel
- LED lights
- SAT TV

Galley

The galley has been customized (2010) with beautiful granite countertops, elongated 12' counter configuration offering abundant storage and preparation space. The newly customized galley pantry down a few steps services the galley.

- GE electric cooktop, vent above (2010)
- GE Advantium convection oven/microwave (2010)
- Large pot and pan storage drawer below oven
- Large refrigerator with Grunert holding plate and temp gauge. Grunert holding plate freezer in pantry
- Stainless steel sink with stainless steel single lever faucet (2010)
- Seagull filtered water spigot at sink (2010)
- Wineglass rack
- Additional large and small storage drawers

Galley's Additional Pantry

To port and aft of the forward stateroom is a customized pantry. This substantially increases storage for galley. This work was completed in 2010.

- Grunert holding plate freezer
- Counter for small appliances such as coffee maker, blender, toaster, etc. with power
- (2) full-length shelved pantries for additional food storage
- Overhead hatch
- Opening/sliding window
- Complete boat manuals in binders

Master Stateroom – Aft

Master stateroom features a full queen size walk around berth with custom made mattress. It is extremely comfortable.

- Marineair air-conditioning with reverse cycle heat and digital control. (Original unit replaced in 2009)
- Sony flatscreen TV with remote
- Custom additional drawer storage on STBD

- Queen berth with custom mattress
- (2) GB adjustable reading lights
- Ensuite head with separate shower on STBD
- Ensuite head with Vacuflush toilet on Port
- Chart drawer under berth plus smaller storage drawers and space under berth
- Uniden remote mic with charger to operate lower station Uniden VHF and as an additional intercom
- (7) opening windows
- Rear entry door and hatch to cockpit
- Bureau with (2) large drawers
- Vornado variable speed electric fan

Master Head

- Vacuflush fresh water head, rebuilt
- Holding tank monitor
- Faux marble countertop and sink
- Drawer and cabinet doored storage areas
- (1) opening window
- Hoses and vent lines replaced
- Separate stall shower with teak door on port, teak slated platform, sump pump, opening window, shower curtain to protect door, teak seat
- Exhaust fans in head and shower

Guest Stateroom – Forward

- Large V-Berth upholstered in black Ultraleather (2010)
- V-Berth filler piece to convert to full width berth
- teak planked ceiling along hull sides
- (2) GB adjustable reading lights
- Hanging locker
- CD/DVD player
- Sony LCD flat screen TV on port bulkhead
- Whale manual bilge pump under sole (2010)
- Battery and bow thruster motor also under berth
- (2) opening sliding windows
- Overhead hatch
- Marineair air-conditioning with separate digital control
- Full length beveled mirror
- Weems & Plath clock and barometer
- Uniden remote mic with charger to operate lower station Uniden VHF and as an additional intercom
- Closing teak door at bottom of steps to FRWD STRM to close off forward area for privacy
- Vornado variable speed electric fan

Guest/Day Head

- Vacuflush fresh water head
- Separate stall shower with teak grate, sump pump, opening hatch
- (2) opening windows
- Faux marble counter and sink
- Drawer and sliding door cabinet for storage

Laundry Room

- Whirlpool stacked washer and dryer
- Counter with storage outboard for cleaning supplies
- Opening/sliding window
- Sliding pocket door entry
- Sea Recovery water maker – pickled

Lower Helm Station

- Teak wood ship's wheel
- Morse engine controls with engine hour gauges
- Tachometer
- Temperature
- Amp
- Oil pressure
- Sentry Battery charger monitor
- Windlass control
- Bennett trim tabs
- 12V plug
- Horn
- A/C amp & volt meters
- Tank Tender that gives fuel and fresh water levels
- Generator start/stop panel w/gauges
- Wesmar bow thruster control
- Overhead alarm panel for water temp, engine oil, bilge pumps and engine room lights
- Glendinning Synchronizer
- Overhead custom electronics breaker panel for flybridge electronics
- Naiad Stabilizer control
- Polyplaner stereo control
- ACR spotlight control
- Heart Inverter remote panel

Electronics & Navigation

Complete stereo system with speakers in master stateroom, salon and bridge with remote connections to VCR and audio to bridge E120 monitor

Lower Helm Station

- Simrad AP21 autopilot – handheld
- Raymarine E-120 chart and radar w/depth sounder, mounter in teak cabinet
- ICOM M602 VHF radio with full function mic and hailer (independent of flybridge ICOM M602)
- Remote for flybridge ICOM M602
- Ritchie 5” compass
- Uniden ES series VHF radio with 3 RAM remotes and chargers
- Autohelm depth, speed and wind
- Navtex with independent antenna
- ACR spotlight control panel

Flybridge Helm Station

- Raymarine E-120 chart and radar w/depth sounder, mounted in custom fiberglass cabinet
- ICOM M602 VHF radio with full function mic and hailer
- Remote for salon ICOM M602
- Ritchie 4” compass
- Handheld autopilot control for Simrad 21 autopilot
- Furuno GPS, backup
- FloScan fuel consumption meters
- Furuno RD 30 depth sounder
- Engine start/stop panel
- Bilge pump warning lights
- Horn control
- Tachometers, oil pressure temperature, volt meters
- Morse engine controls
- Wesmar bow thruster control
- Polyplaner stereo speaker remote control
- 12V outlet/110V outlet
- Uniden remote mic w/charger to operate lower station Uniden VHF as additional intercom

Flybridge

- Mast with boom rigged for staysail (new staysail stowed in helm sliding storage locker outboard)
- Stern floodlights on mast
- Backup dinghy lift system
- Fresh water outlet
- Electric outlet (GFI)
- Additional bench seat on starboard side, facing forward with teak table between
- NEW Llebroc helm chairs on port and starboard (similar to STIDD) Ergonomic design and extremely comfortable
- Rear facing bench seats with storage under

- Custom Sunbrella covers for all seats, teak bar, teak table and helm console
- Custom folding aluminum radar arch
- Custom red and white lights and dimming white floodlights below arch to illuminate flybridge
- Black Sunbrella $\frac{3}{4}$ bimini top with isinglass enclosure
- TracVision 4 SAT TV mounted on STBD arch
- Dummy dome to port enclosing Raymarine GPS antenna
- Radar antenna on radar arch
- Chart locker port outboard
- Fiberglass sliding storage locker outboard
- Offshore type 1 life jackets with whistles and strobe lights
- (8) bridge overhead halogen lights plus (2) flood lights
- Spreader light
- (2) ICOM VHF antennas
- Uniden VHF antenna
- Stereo AM/FM antenna
- Cell phone antenna
- Weather fax antenna
- Sirius SAT antenna NEW 2015

Deck

- Teak cap rail
- Custom stainless steel oval handrail (2010)
- Rail gates, port and STBD
- Transom cover
- Front windshield sun cover
- Foredeck storage locker
- Dual anchor platform
- Delta anchor with 250' chain
- Fortress 2nd anchor
- Fresh water washdown
- Lofrans Tigres windlass
- Bow/foredeck TV/telephone and shorepower inlets with extra 50'-50 amp electric cable
- Kiwi anchor rider
- Anchor chain claw
- Teak decks in excellent condition
- Painted out exterior teak trim on house
- Sun pad cushions forward

AFT Deck

- Raymarine all-weather camera on mast
- Anemometer on mast
- Winslow 4-person liferaft – recently renewed

- Custom aluminum storage box
- Large Magma propane grill with Sunbrella cover
- EPIRB mount
- Lifesling on rail to bridge
- UMT electric davit on cabin top
- 10'6" Novurania dinghy w/20 hp Honda 4-stroke motor w/custom seat, console and custom dinghy cradle
- Lower step down to cockpit and transom door
- GFI electric outlet
- Swim ladder – folds down, has 4 steps

Cockpit

- Large storage lazarette
- (2) custom teak storage boxes (1) for hot/cold shower and (1) for TV/telephone connection and Cablemaster control
- Glendinning Cablemaster with 50 amp cable new 2015
- Emergency tiller
- Walk thru transom door
- Cockpit spill trays

Engine Room

Engine room access can be found by lifting the stairs between the main and lower deck without having to lift the salon sole panels. Yacht inventory includes many thousands of dollars worth miscellaneous parts.

- Twin 375 hp CAT 3208's
- 12kW Northern Lights Generator in sound shield (reinsulated 2014)
- Wesmar bow thruster F2-12/24V, new battery 2014
- Naiad Stabilizers
- Dual Racor filters for each engine
- Fuel tanks pressure cleaned 2008 – no rust
- 4-blade propellers
- Spare props (stored in lazarette)
- FloScan fuel meters
- Walker Air Seps – both engines
- Separate batteries for house, engines, generator and thruster
- Redundant fresh water pumps with selector switch
- 25 GPH fresh water water maker with filtration system – control in laundry room
- Water heater, new 2009
- Grunert refrigerator/freezer compressor with electric control box, new 2009
- Emergency high capacity engine bilge pumping system (one attached to each engine)
- Automatic CO2 fire extinguisher
- Maintenance records available, all operating manuals on board

- Galvanic isolator
- Xantrac Pathfinder battery combiner, will combine all batteries except thruster
- New bow thruster battery charger
- Oversize 120 amp Powerline alternator to port engine, recharges house batteries underway
- Sentry 40 amp backup battery charger
- Heart Freedom 130 amp primary battery charger
- Oil change pump

Exclusions

- Owners personal belongings, tools, galley ware
- (2) white cushioned chairs on flybridge

Remarks

This is a remarkable Grand Banks 46 Classic. Her living areas are spacious, tastefully decorated and she offers HUGE amounts of storage. Updated granite galley counters flow gracefully and are a delight to use. Little Miss Magic combines the best of a galley up with the increased space below for dedicated laundry and pantry areas. There is also a bonus storage area half the ships width accessed from under the forward steps to guest cabin. This area is filled with thousands of dollars worth of spare parts. Little Miss Magic is expertly cared for with an open checkbook. Recent maintenance and upgrades include:

- **New Clarion stereo/CD/Satellite radio receiver in saloon with remote on flybridge**
- **New (2) LleBroc helm chairs on flybridge. LleBroc is similar to STIDD, ergonomic design and fully adjustable**
- **New Frigid Rigid combination refrigerator/freezer on flybridge with seat cushion**
- **New (4) Kenwood stereo speakers on flybridge**
- **New forward Marineair air-conditioner/reverse heat unit – all units recently serviced and master and saloon units replaced earlier**
- **New teak rail covers**
- **New 24 V bow thruster battery charger**
- **Waxed, polish and buffed 2/15**
- **Teak decks in excellent condition**
- **Varnish in excellent condition – teak trim around flybridge and exterior doors painted white Awlgrip**
- **New stainless steel handrails in 2010 similar to GB's Aleutian models, large oval, not round. Much more substantial**
- **All canvas and isinglass new in 2010**
- **Novurania dinghy with Yamaha outboard**
- **Separate washer and dryer**
- **Naiad stabilizers**
- **CAT 3208TA (twin) 375 hp engines current and up to date with all service and maintenance Raymarine E-120 updated electronics**

- **Fore and AFT staterooms, no sleeping almost “feet to feet” with sleeping cabins bunched together as in the Europa style**

Don't miss this exceptional cruising Grand Banks. She's had a complete refit and is in beautiful condition. She is the perfect cruiser for two couples with lots of room.

Exclusions

Owner's personal belongings.

Disclaimer

The Company offers the details of this vessel or yacht in good faith but cannot guarantee or warrant the accuracy of this information nor warrant the condition of the vessel. A buyer should instruct his representatives, agents, or his surveyors, to investigate such details as the buyer desires validated. This vessel or yacht is offered subject to prior sale, price change, or withdrawal without notice.

PHOTOS

Bow Anchor Pulpit



Bow Area



Cockpit



Cockpit Side View



Deck Custom Storage Box



Port Saloon Aft



Saloon Looking Aft



Saloon Looking Forward



Saloon



Bar Cabinet



Bar Cabinet Drink Refer w Icemaker



Galley Appliances



Galley



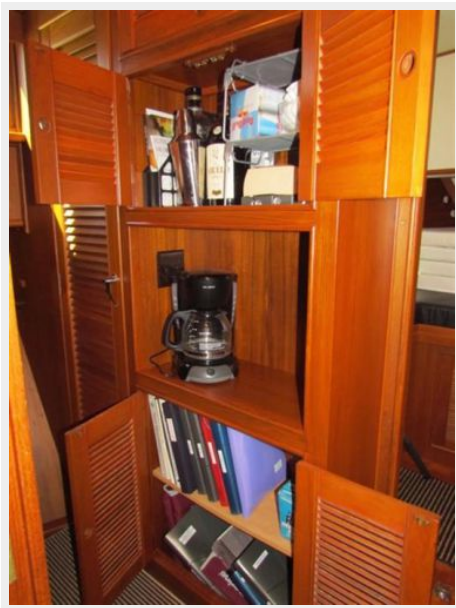
Galley



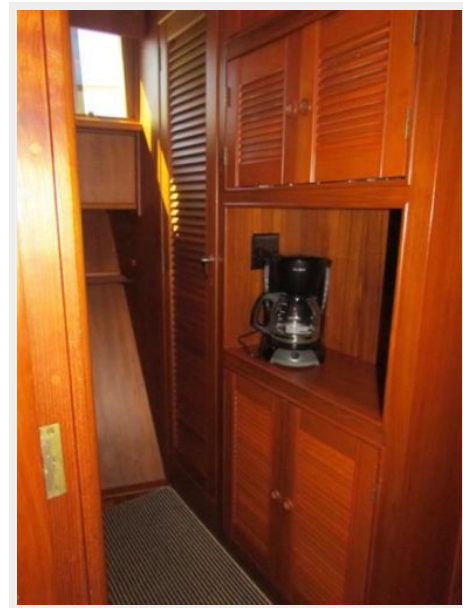
Pantry Freezer



Pantry Storage



Pantry



Parts Storage



Lower Helm



Master Head



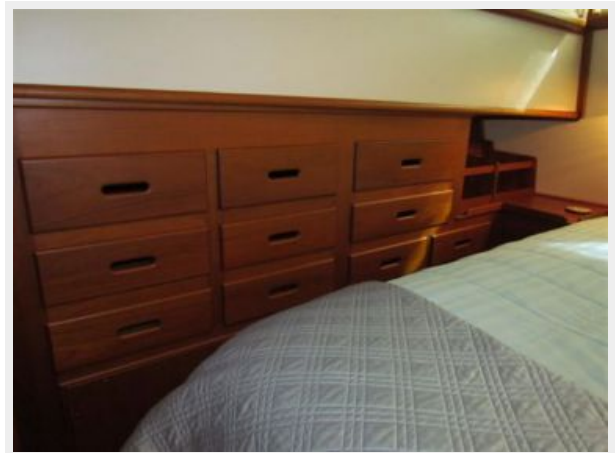
Master Shower



Master Stateroom Bureau Port



Master Stateroom Custom Storage Starboard



Master Stateroom Door to Cockpit



Master Stateroom Forward



Master Stateroom Queen



Guest Head Shower



Guest Head



Guest Stateroom Aft Port



Guest Stateroom



Flybridge Dinette Seating



Flybridge Helm



Flybridge Helm



Flybridge Overhead Lighting



Flybridge Thicker Cushions



Flybridge



LleBroc Helm Seat New



LleBroc Port Helm Seat New



New Frigid Rigid ReferFreezer



Radar Arch



Port Side Deck



Starboard Side Deck



Utility Room



Water Maker



Engine Room Aft



Engine Room Port Tank



Engine Room Port



Engine Room Starboard Fuel



Engine Room Starboard



Engine Room Water Maker Stabilizer Hydraulics



Engine Room Wiring



CONTACTS

Andrey Shestakov, leading yacht broker of the sales department of Shestakov Yacht Sales Inc. Shestakov Yacht Sales Inc., the official representative of the Miami/Fort Lauderdale FL headquarters.

Contact details

Email: andrey@shestakovyachtsales.com

Web: shestakovyachtsales.com/en/

Telephones

USA: +1(954)274-4435

Office hours

Monday – Saturday: **9:00 - 21:00** EDT

Sunday: **closed**

Address



Harbour Towne Marina, 850 NE 3rd St,
STE 213, Dania, FL 33004