

## NEPTUNUS 60 — NEPTUNUS



**Судостроитель:** NEPTUNUS

**Год постройки:** 2000

**Модель:** Моторная яхта

**Цена:** **ЦЕНА ЯХТЫ ПО ЗАПРОСУ**

**Местонахождение:** United States

**Длина общая:** 60' 2" (18.34m)

**Ширина:** 16' 4" (4.98m)

**Мин. осадка:** 4' 10" (1.47m)

**Макс. осадка:** 4' 11" (1.50m)

**Крейс. скорость:** 22 Kts. (25 MPH)

**Макс. скорость:** 28 Kts. (32 MPH)

Купить **NEPTUNUS 60 — NEPTUNUS** а также выбрать подходящую вам яхту из нашего каталога яхт вам поможет опытный яхтенный брокер Андрей Шестаков. На сегодняшний день компания **Shestakov Yacht Sales Inc.** имеет большое количество яхт в собственном списке продаж, а также тесно сотрудничает со всеми крупными яхтенными производителями по всему миру.

Для того чтобы купить яхту **NEPTUNUS 60 — NEPTUNUS** а также проконсультироваться по любому вопросу связанному с покупкой, продажей, чартером яхт позвоните по телефону **+7(918)465-66-44**.

# ОГЛАВЛЕНИЕ

---

ОГЛАВЛЕНИЕ	2
ХАРАКТЕРИСТИКИ	5
Основная информация	5
Размеры	5
Скорость, вместимость и масса	5
Размещение	5
Корпус и палуба	6
Информация о двигателе	6
ПОДРОБНОЕ ОПИСАНИЕ	7
Vessel Walkthrough	7
Salon	7
Galley	8
Dining Area	8
Lower Helm	8
Companionway	8
Master Stateroom	9
Master Head	9
Port Guest Cabin	9
Guest Head to Starboard	9
VIP Cabin	10
Foredeck	10
Aft Deck	10
Flybridge Deck	11
Flybridge Helm Equipment	11
Lazarette	11
Engine Room	11
Electrical	12
Construction Details	12

Recent 2015 Improvements:	12
Remarks	12
Exclusions	12
Исключения	13
Отказ от ответственности	13
<b>ФОТОГРАФИИ</b>	<b>14</b>
Salon Looking Forward	14
Salon to Port	14
Salon to Starboard	14
Salon Looking Aft	14
Galley	14
Galley	14
Galley	15
Galley	15
Dining Area	15
Starboard View from Galley	15
Companionway	15
Lower Helm	15
Companionway	16
Laundry Center	16
Master	16
Master to Port	16
Master Head Entrance	17
Master Looking Forward	17
Master Head	17
Portside Guest	17
VIP	18
VIP	18
VIP Looking Aft	18

Foredeck	18
Anchor Windlass/Pulpit	18
Aft Deck Area	18
Aft Deck Seating	19
Aft Deck Salon Entry Door	19
Flybridge Access Stairs	19
Flybridge	19
Helm	19
Helm Detail Center	19
Helm Detail Port	20
Helm Detail Port	20
Helm Detail Starboard	20
Flybridge Bar	20
Flybridge Aft Seating	21
Lazarette to Starboard	21
Lazarette to Port	21
Starboard Engine	21
Port Engine	21
Chilled Water AC	21
Charger	22
Electrical Panel	22
<b>КОНТАКТЫ</b>	<b>23</b>
Контактная информация	23
Телефоны	23
Время работы	23
Адрес	23

# ХАРАКТЕРИСТИКИ

## Основная информация

Тип судна: Моторная яхта

Подкатегория: Flybridge

Модельный год: 2000

Год постройки: 2000

Страна: United States

Верх: Bimini Top

Открытая палуба мостика: Да

## Размеры

Длина общая: 60' 2" (18.34m)

Длина по ватерлинии: 57' 2" (17.42m)

Длина палубы: 60' 2" (18.34m)

Ширина: 16' 4" (4.98m)

Мин. осадка: 4' 10" (1.47m)

Макс. осадка: 4' 11" (1.50m)

## Скорость, вместимость и масса

Крейс. скорость: 22 Kts. (25 MPH)

Крейсерская скорость поворота: 2000 Kts.

Макс. скорость: 28 Kts. (32 MPH)

Водоизмещение: 57000 Pounds

Вместимость воды: 190 Gallons

Вместимость сточного бака: 110 Gallons

Объем топливного бака: 950 Gallons

## Размещение

Всего кают: 3

Всего коек: 4

Спальные места: 6

Всего ком. состава: 2

## Корпус и палуба

---

**Материал корпуса:** Fiberglass

**Материал палубы:** Fiberglass

**Комплектация корпуса:** Modified V-Hull

**Цвет корпуса:** white

**Дизайнер корпуса:** Frank Mulder

**Дизайнер экстерьера:** Neptunus

**Дизайнер интерьера:** Neptunus

## Информация о двигателе

---

**Двигатели:** 2

**Производитель:** Caterpillar

**Модель:** 3406E

**Тип двигателя:** Inboard

**Тип топлива:** Diesel

# ПОДРОБНОЕ ОПИСАНИЕ

## Vessel Walkthrough

This 60' Neptunus "Flybridge Model" offers an open lay-out with three generous Staterooms, two Heads, a Lower Helm Station, an on deck Galley and dining area with folding burlwood top table, inside helm station with full instrumentation as well as a FB control station. The interior has the perfect blend of high gloss natural cherry joinery, padded light tan Ultra Leather paneling, silk fabrics. The hue of the Ultra Leather almond Walls and headliner in this area are unique to this particular 60' Neptunus and provides a very rich and elegant look. The deck plan of the main deck, below deck and Flybridge are unique only to Neptunus designs. The Neptunus Space planning is excellent and needs to be seen to be appreciated. Upon entering the Aft Deck via the portside steps from the swim platform there is built in seating and access to the side decks. The same deck level Salon is entered via a centerline stainless steel trimmed sliding door. There is a rounded built in couch to port and two built in single seats to starboard. The galley is two steps up from the salon deck and is situated on port side. Across from the galley is the inside helm station and L-Shaped dinette. Between the galley and inside helm is the staircase leading to the cabin area and laundry facility. The Master is aft with an en suite Head. Forward to port is the Guest Cabin. All the way forward is the VIP. The shared Guest Head is to starboard opposite the Guest Cabin.

## Salon

The Salon is entered via a "Trend" stainless steel sliding door and lined drapery. The entire main deck is open with two levels of accommodation. To port is an curved sofa with seating for 5 upholstered in a light Ultra Leather sofa with storage below the cushions. A round, hingable cherry and burl wood coffee table that electrically raises and lowers in front of the settee.

To starboard are two matching built in seats with a storage cabinets in between that serves as a dry bar. Just aft of the built in seating to starboard is the entertainment unit with raised TV and built in AM/FM/CD changer stereo equipment.. Above is a cabinet with the satellite control system.

Also in the Salon are the large salon windows with new drapes, trimmed in high gloss cherry. Additional equipment includes white Clarion stereo speakers, subwoofer, several outlets and switches, digital Marine Air AC controls. Several halogen mini spots and rope lighting behind the valance provide lighting. The upper soffit delivers the air conditioning in an even flow throughout the Salon.

The forward port salon wall conveniently houses the main breaker panel behind twin cherry wood doors.

---

## Galley

---

This open floor plan leads you forward and up two steps into the full Galley. The Galley's design is L shaped to port is well laid out for very efficient use and includes the following features: Granite tile flooring Granite countertops with double bull nose edging 1 – 1/2 stainless steel under mount sink Two tone single lever faucet Four burner Ceran type AEG 240V cook top Exhaust fan Panasonic convection/microwave oven with drawer above and below Sub Zero under counter freezer w/icemaker with cherry paneled door Sub Zero under counter refrigerator with cherry paneled door White Westinghouse 18" dish washer (4) Halogen mini spots (2 additional under the cabinet) (6) Cherry cabinet doors for storage space (2) Cherry drawers Built in Black & Decker coffeemaker Exhaust fan (4) Overhead mini spots

---

## Dining Area

---

Across the Galley is the yacht's Dining Area on the starboard side just behind the inside helm and open to the Galley with a unique cherry hi-lo table. The Ultra Leather tan fabric upholstered settee easily seats two. Also in this area is another Marine Air digital AC control and two directional halogen mini spots over the table.

The sole of this area is carpeted to match the Salon.

Also in this area are two more Clarion Two Stage stereo speakers and window defoggers.

---

## Lower Helm

---

To starboard on the same level as the Dinette is a complete Lower Helm with a matching Ultra Leather oversize helm bench with storage below. Two cherry wood drawers below the Helm seat offer extra storage space for the Galley.

Equipment at the Lower Helm includes:

CAT engine monitoring displays Simrad Robertson AP22 autopilot Autohelm depth Autohelm speed/log Raymarine Ray 210 VHF Raymarine ST60+ Tridata Stainless & wood trimmed steering wheel MMC electronic clutch & throttle controls w/synchronizer & trolling speed Vetus bow thruster control Bennett trim tab controls Fireboy Halon override controls (2) Windshield wipers/washers Air horn control Defogger controls Chart light Storage below the helm

---

## Companionway

---

In the center, between the galley and inside helm are carpeted steps with courtesy lights and handrail.

Aft of the steps to port is the entrance to the Master Cabin and just forward is the Whirlpool Twin



heavy duty washer dryer in a locker behind cherry doors.

---

## Master Stateroom

---

At the bottom of the Companionway turning right is the entry to the master cabin hallway. In the master cabin hallway to starboard is also the entry to the master head. A raised platform berth with rope lighting below is positioned in the center to maximize the space allowing for walk around the master berth. The mattress is a Pillow top mattress. Twin brass reading lights flank the upholstered headboard. The master berth has night tables on each side with two drawers and two cabinets each. Forward in the master cabin is a large cedar lined auto lit hanging locker. To port is a small built in seat and additional storage space. The cabin has plenty storage drawers to go for extended cruising. This includes no less than fourteen cabinet doors and two additional hanging lockers!

The cabin has three opening portholes with drapes for cross ventilation.

At the foot of the berth is a built in 14" RCA TV/VCR combo. The cabin also has cabin speakers with volume control. Overhead are six overhead mini halogen lights and rope lights under the berth and window valance. Again AC is delivered via a valance over the berth for even air distribution.

---

## Master Head

---

Two steps up from the Master is the private Master Head with a custom Corian like countertop and marble sole and a Raritan Atlantis head. The vanity has one curved storage cabinet below the bow front Corian countertop and an under mount sink with faucet and soap dispenser Above is an opening porthole behind a Duette shade with rope lighting for accent and two overhead mini spots. Above are five mirrored medicine cabinet doors The stall shower has a sliding curved glass door, a wall mountable or handheld shower head, an exhaust fan and light fixture.

---

## Port Guest Cabin

---

Forward through the center Companionway to port is the Guest Cabin with criss-cross single berths. Under the transverse berth is a storage locker with shelves and the cedar lined auto lit hanging locker is located forward of the length wise berth. AC is delivered via a ceiling soffit.

The cabin has one opening porthole with drapes.

Also in this cabin are two reading lights and digital AC controls.

---

## Guest Head to Starboard

---

Across the Companionway from the port Guest Cabin is the Guest Head with two access doors, one from the center line Companionway, the other from the VIP. It features a custom marble tile sole, bow front vanity cabinet with an under mount sink on the Corian countertop. Above there are four mirror front medicine cabinets. Below the medicine cabinets is an opening porthole with window shades. The toilet is a Raritan Atlantis model. The stall shower has a curved sliding glass door, shower fixture and a light and exhaust fan.

Three halogen mini spots offer excellent lighting.

## VIP Cabin

---

The VIP Cabin is all the way forward. The queen size berth with innerspring mattress is off the forward mirrored bulkhead with an upholstered headboard below. Below the berth are rope lights and one storage drawer facing aft. Above the berth is an escape hatch for emergency escape and ventilation and two separate mini spots as reading lights. To both port and starboard are six cherry cabinets each side. Below are full drapes and rope lights with two opening portholes on each side. Built in cabinetry form nightstands both port and starboard. Aft to starboard is access to the Guest Head. Aft to port and starboard are cedar lined hanging lockers. A built in RCA TV/VCR combo to port. Also in this cabin are four overhead mini spots, two Clarion stereo speakers, digital AC controls and a hatch to the bow thruster area in the sole below.

## Foredeck

---

Fiberglass nonskid decks 55 lbs. anchor w/150' of 3/8" chain rode Vetus above deck anchor windlass Bow roller & stainless steel anchor chute Chain locker hinged access hatch (new 2015) Freshwater anchor wash down spigot Oversize welded stainless steel bow rails w/stainless steel lifeline (2) Windshield wipers w/washers International navigation lights Port & starboard opening side gate in bow rail Dual spring line cleats port & starboard Stainless burgee staff Square deck hatch to VIP (new 2015) Stainless steel vertical boarding ladder mounts port & starboard, stows in Lazarette Sun bathing cushions with cover ITT Jabsco searchlight on brow Fiberglass bow pulpit 7 Step Marquipt Tide Ride ladder mounted on bow White Stamoid windshield cover front & sides

## Aft Deck

---

(2) Teak steps port & starboard down to swim platform Four person aft bench seat with white vinyl cushions & cover Teak sole w/hingable hatch to Engine Room (10) FRP steps to Flybridge w/stainless steel handrail (2) Teak steps to side deck, port & starboard w/LED step lights PAR pressure regulated water inlet in portside locker Glendinning cable master controls TV/telephone inlet in starboard side locker Hot & cold shower enclosure to starboard Stainless steel flag pole w/ensign (4) Overhead stainless steel trimmed halogen lights Trend stainless steel trimmed entry door w/dark tinted glass (2) Poly Planer speakers Storage lockers on port & starboard pilaster

Stainless steel handrail at Flybridge steps (2) Stainless steel handrails at side decks Hinged boarding gate

## Flybridge Deck

Fiberglass nonskid decks Bimini top Helm in center Tinted Venturi windscreen Flybridge bar w sink & Norcold refrigerator and BBQ grille J Shaped Flybridge seating w/removable white vinyl cushions & storage below for seating up to 5 people w/cover White fiberglass cocktail table w/cover Fiberglass radar aft with two stainless steel trimmed lights SeaTel satellite dome (2) Upholstered adjustable helm chairs White helm cover Electric air horn Black rimmed helm wheel Storage cabinet under bar Front and partial side enclosure w/(3) U Zips Portside seat forward of bar

## Flybridge Helm Equipment

The Flybridge Helm features the following equipment: Two Garmin color plotters, 4212 & 5212 both touch screen Raymarine RL 80 48 mile color radar/plotter Simrad autopilot repeater AP-22 Autohelm speed log repeater Autohelm depth finder repeater CAT engine displays w/alarms Icom M-504 VHF Bennett trim tab controls Twin MMC electronic clutch & throttle controls w/synchronizer Vetus bow thruster controls (10 HP) ITT Jabsco searchlight controls (2) Wema fuel gauges Ritchie 5" magnetic compass Hydraulic steering Bilge pump monitoring panel Engine start/stop key switches Windlass remote controls Clarion XMD 1 AM/FM/stereo receiver & CD player with two speakers Glomex Terrestrial TV antenna on arch (4) Poly Planer stereo speakers

## Lazarette

The Lazarette and the Engine Room are reached via walk Transom door from the swim platform.

Lazarette equipment includes: Waste discharge pump AC fluorescent lighting DC incandescent lighting Rudder gear under covered box GFCI outlet Access panels to bilge below Hydraulic pump for Bennett trim tabs Racor 900 fuel filters for each engine Racor 500 fuel filters for generator Westerbeke 17 kW generator with sound enclosure, 2270 hours (2) 475 Gallon fuel tanks w/site gauges Access hatch to Aft Deck Algae X fuel condition magnets

## Engine Room

Dripless shaft seals w/mounted spares 2 1/2" stainless steel shafts 4 Blade bronze props mains Dual actuator Bennett trim tabs 5 Point oil change system for mains & generator & transmissions (1) 48,000 BTU Marine Air chiller (chilled water) with soft start Rheem 25 gallon hot water heater Airsep crankcase ventilation system (2) Coolant recovery bottles for main engines Racor 500 fuel

filter for generator Groco 3" main engine intake strainers w/ball valves AC fluorescent Engine Room lighting DC incandescent Engine Room lighting Fresh water pump Shaft brushes for bonding Door between Engine Room & Lazarette Fireboy Halon fire controls system Engine Room insulation behind aluminum panels (2) Engine Room blowers (3) Fiberglass mufflers Hard coat wrapped exhaust risers, (4) Rule 3700 bilge pumps Waste macerator pump 4 Step stainless steel & teak tread boarding ladder Engines w/original Cat gloss polyurethane paint

## Electrical

---

12/24 Volt DC electrical system 110/220 Volt DC electrical system (2) 4D Gel Cell12V batteries for 24V engine starting, thruster & windlass (2) 8D Gel Cell12V batteries for house service & generator starting 220 volt 50 amp Glendinning cable master w/60' cord in starboard cleat locker Mastervolt 24V/25 amp battery charger for starting batteries Mastervolt Charge 12V/60 Amp battery charger for house batteries Mastervolt 24V/25 amp battery charger for winch & thruster (2) 15 KVA isolation transformer LED DC volt meter LED AC volt meter LED DC amp meters LED AC amp meter Cable TV/telephone inlets in starboard cleat locker w/50' cord sets Neptunus DC panel with breaker protected circuits w/indicator lights Neptunus 110V panel with breaker protected circuits w/indicator lights Neptunus 220V panel with double pole breaker protected circuits w/indicator lights A/B antenna switch Quicksilver galvanic isolator Fully bonded for electrolysis protection (2) Battery shut off switches in master cabin Centrally located GFCI outlets for ease of resetting at salon electrical panel

## Construction Details

---

Solid fiberglass hull below the waterline Actual LOA 62'2".

## Recent 2015 Improvements:

---

1) February 2015 bottom paint 2) New cutlass bearings 3) New shaft seals 4) 1000 Hour service on main engines 5) Full engine oil/filter service 6) Full detail of Engine Room 7) New Pirelli type flooring in Lazarette 8) Replaced bow hatches 9) New swim platform teak

## Remarks

---

This clean 60 Neptunus is for sale only because her owner is building a new 62' Neptunus.

The 800 HP CATs are a great option and the high gloss cherry interior makes her look like a much newer boat!

## Exclusions

---

While every effort was made to list all pertinent included equipment aboard NEPTUNUS 60, there are some personal belongings aboard. Prospective purchasers should assume any item not specifically mentioned herein will not convey at closing.

## **Исключения**

---

При продаже яхты исключаются личные вещи владельца.

## **Отказ от ответственности**

---

Компания предоставляет описание судна или яхты добросовестно, но не может гарантировать точность этой информации, а также не ручается за техническое состояние. Покупатель должен проинструктировать своих агентов или оценщиков исследовать представленную информацию более подробно, по собственному желанию. Продажа судна или яхты, изменение цены или снятие с продажи будет происходить без предварительного уведомления.

# ФОТОГРАФИИ

**Salon Looking Forward**



**Salon to Port**



**Salon to Starboard**



**Salon Looking Aft**



**Galley**



**Galley**





**Galley**



**Galley**



**Dining Area**



**Starboard View from Galley**



**Companionway**



**Lower Helm**



**Companionway**



**Laundry Center**



**Master**



**Master to Port**





**Master Looking Forward**



**Master Head Entrance**



**Master Head**



**Portside Guest**



VIP



VIP



VIP Looking Aft



Foredeck



Anchor Windlass/Pulpit



Aft Deck Area





**Aft Deck Seating**



**Aft Deck Salon Entry Door**



**Fibrydge Access Stairs**



**Fibrydge**



**Helm**



**Helm Detail Center**



Helm Detail Port



Helm Detail Port



Helm Detail Starboard



Flybridge Bar





**Flybridge Aft Seating**



**Lazarette to Starboard**



**Lazarette to Port**



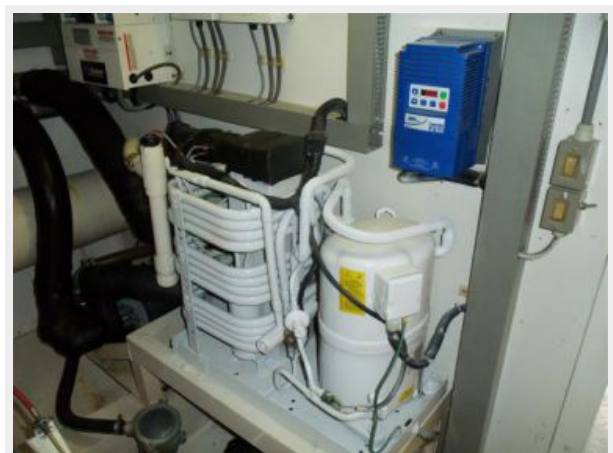
**Starboard Engine**



**Port Engine**



**Chilled Water AC**



### Charger



### Electrical Panel



# КОНТАКТЫ

---

Андрей Шестаков (Andrey Shestakov) – ведущий яхтенный брокер отдела продаж яхт и судов компании Shestakov Yacht Sales Inc. Официальный представитель Shestakov Yacht Sales Inc. для русскоговорящих клиентов в центральном офисе компании в Майами/Форт Лодердейл/Флорида/США.

## Контактная информация

---

Email: [andrey@shestakovyachtsales.com](mailto:andrey@shestakovyachtsales.com)

Web: [shestakovyachtsales.com](http://shestakovyachtsales.com)

## Телефоны

---

Краснодарский край: **+7(918)465-66-44**

США, Майами, Флорида: **+1(954)274-4435**

## Время работы

---

Понедельник – Суббота: **9:00 - 21:00**  
EDT

Воскресенье: **Закрито**

## Адрес

---



Harbour Towne Marina, 850 NE 3rd St,  
STE 213, Dania, FL 33004