

## SUMMER TIME — OCEAN ALEXANDER



**Builder:** OCEAN ALEXANDER

**Year Built:** 1995

**Model:** Motor Yacht

**Price:** PRICE ON APPLICATION

**Location:** United States

**LOA:** 48' 0" (14.63m)

**Beam:** 15' 8" (4.78m)

**Max Draft:** 4' 0" (1.22m)

Our experienced yacht broker, Andrey Shestakov, will help you choose and buy a yacht that best suits your needs **Summer Time — OCEAN ALEXANDER** from our catalogue. Presently, at Shestakov Yacht Sales Inc., we have a wide variety of yachts available on our sale's list. We also work in close contact with all the big yacht manufacturers from all over the world.

If you would like to buy a yacht **Summer Time — OCEAN ALEXANDER** or would like help answering any questions concerning purchasing, selling or chartering a yacht, please call **+1(954)274-4435**

---

# TABLE OF CONTENTS

---

TABLE OF CONTENTS	2
SPECIFICATIONS	3
Overview	3
Basic Information	3
Dimensions	3
Speed, Capacities and Weight	3
Accommodations	3
Hull and Deck Information	3
Engine Information	4
DETAILED INFORMATION	5
Primary Specifications	5
Exclusions	7
Disclaimer	7
PHOTOS	8
CONTACTS	12
Contact details	12
Telephones	12
Office hours	12
Address	12

---

# SPECIFICATIONS

---

## Overview

---

The Ocean Alexander 486 Classico is an Ed Monk designed raised pilothouse with the “business” like appearance of a serious passage maker. The 486 is heavily built on a modern semi displacement hull with a deep keel for added stability. The 486 typically features two equally sized spacious staterooms with walk around queen size berths and ensuite heads with stall showers. The 486’s side decks are wide and well protected for our rugged Northwest waters.

## Basic Information

---

**Category:** Motor Yacht

**Model Year:** 1995

**Year Built:** 1995

**Country:** United States

## Dimensions

---

**LOA:** 48' 0" (14.63m)

**Beam:** 15' 8" (4.78m)

**Max Draft:** 4' 0" (1.22m)

## Speed, Capacities and Weight

---

**Displacement:** 48000 Pounds

**Fuel Capacity:** 700 Gallons

## Accommodations

---

**Total Cabins:** 2

**Total Heads:** 2

## Hull and Deck Information

---

**Hull Material:** Fiberglass

---

## Engine Information

---

**Engines:** 2

**Manufacturer:** Caterpillar

**Model:** 3208 TA's

**Fuel Type:** Diesel

---

# DETAILED INFORMATION

---

## Primary Specifications

---

**Accommodations:** SUMMERTIME features a wonderful and practical layout and is THE perfect cruising boat for a couple who enjoys having another couple aboard whether for a weekend or an extended cruise. SUMMERTIME has the ability to sleep four owners and guest in two spacious staterooms each with an ensuite head. A unique feature is that either one of the two staterooms has the ability to serve as a master.

**Vessel walkthrough:** Summertime is boarded via the swim platform and the transom gate that leads to the teak cockpit. A few steps further is a sliding door with phantom screens that leads into the salon. Once inside the salon there is a comfortable sofa to port fronted by a teak with glass top adjustable high/low table. Across to starboard are two easy chairs separated by a table with two shelves. Further forward is a built-in cabinet for entertainment equipment and an ice maker. The U-shaped galley is across, forward and to port. From the galley, two steps forward will lead you to the spacious pilothouse with built-in settee and dinette. The lower deck is reached via a curved stairway leading from the pilothouse downward to the two staterooms with ensuite heads. Back up in the pilothouse the flybridge is reached via a staircase at the aft bulkhead.

### Salon details:

- Large sliding glass door with teak trim
- Phantom screens
- Large windows to port and to starboard provide excellent visibility
- Custom sofa with designer fabric, pillows & shams
- Teak high low table with glass top
- Two Barcalounger EZ chairs separated by table with two shelves
- Custom Area rugs
- Teak Parquet Flooring
- Area Carpet Built-in
- Satin finished teak cabinet with room for entertainment equipment
- Two bar stools
- Ice Maker
- Privacy Drapes
- Recessed overhead lights

### Galley Details:

- Same level as salon
- U-Shaped to port
- Oversized Corian Countertop
- Kenyon three burner electric cook top

- Sub Zero Refrigerator/Freezer
- U-Line Ice Maker ( Salon Cabinet )
- Broan Trash Compactor
- GE Microwave Oven/Convection Oven
- Very ample storage
- Pass through to Pilothouse

### **Electrical Details:**

- 8 KW Onan Generator
- Heart Interface 2500 Watt Inverter
- Shore Power 30&50 AMP
- 12 Volt DC Ships System
- Pro Mariner Battery Charger
- Engine Alternator

### **Mechanical Details:**

- Wesmar Bow Thruster
- Webasto Diesel Furnace
- Fresh Water Cooling System
- Twin Disc Transmissions
- Hynautic Engine Controls
- Hynautic Hydraulic Steering
- Glendinning Engine Syncs
- Bennett Trim Tabs
- Windshield Wipers
- Racor Fuel Filters
- Driplass Shaft Seals
- Vacuflush Heads
- Macerator System
- 3 Bladed Bronze 30 x 28 Propellers
- Fuel & Water level indicators
- Combo Washer/Dryer
- Custom Arch Electric Lifting

### **Electronics**

- Radar: Furuno Nav Net
- Plotter: Furuno Nav Net Displayed on Samsung 18" Screen
- Furuno: GP32 GPS
- Furuno Rd 30 Digital Depth
- ICOM VHF Radio

### **Deck & Hull Details:**

- Modified V Hull With Hard Chine
- FRP Construction Material
- Gelcoat Finish
- Flybridge Bimini W/ Full Enclosure (Stored Away)
- FRP Radar Arch
- Windshield wipers
- Teak Cockpit Decks
- Roskelly/Olsson Electric Davit
- Maxwell Windlass
- Delta 60 lb Anchor
- 350' 3/8 Chain
- Rendova Tender ( 2003 )
- Yamaha 40 h/p 4 Stroke Outboard Motor
- Fresh Water Moored Under Cover

---

## Exclusions

---

Owner's personal belongings.

---

## Disclaimer

---

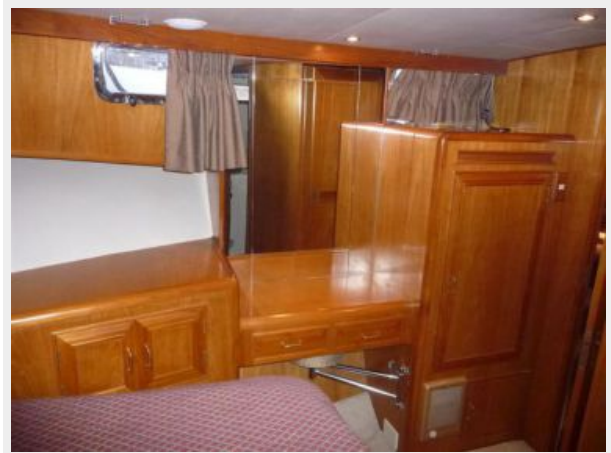
The Company offers the details of this vessel or yacht in good faith but cannot guarantee or warrant the accuracy of this information nor warrant the condition of the vessel. A buyer should instruct his representatives, agents, or his surveyors, to investigate such details as the buyer desires validated. This vessel or yacht is offered subject to prior sale, price change, or withdrawal without notice.

# PHOTOS













---

# CONTACTS

---

Andrey Shestakov, leading yacht broker of the sales department of Shestakov Yacht Sales Inc. Shestakov Yacht Sales Inc., the official representative of the Miami/Fort Lauderdale FL headquarters.

---

## Contact details

---

Email: [andrey@shestakovyachtsales.com](mailto:andrey@shestakovyachtsales.com)

Web: [shestakovyachtsales.com/en/](http://shestakovyachtsales.com/en/)

---

## Telephones

---

USA: +1(954)274-4435

---

## Office hours

---

Monday – Saturday: **9:00 - 21:00** EDT

Sunday: **closed**

---

## Address

---



Harbour Towne Marina, 850 NE 3rd St,  
STE 213, Dania, FL 33004