

MIA ELISE — VIKING



Builder: VIKING

Year Built: 2011

Model: Sport Fisherman

Price: PRICE ON APPLICATION

Location: United States

LOA: 42' 0" (12.80m)

Beam: 15' 10" (4.83m)

Max Draft: 3' 5" (1.04m)

Our experienced yacht broker, Andrey Shestakov, will help you choose and buy a yacht that best suits your needs **Mia Elise — VIKING** from our catalogue. Presently, at Shestakov Yacht Sales Inc., we have a wide variety of yachts available on our sale's list. We also work in close contact with all the big yacht manufacturers from all over the world.

If you would like to buy a yacht **Mia Elise — VIKING** or would like help answering any questions concerning purchasing, selling or chartering a yacht, please call **+1(954)274-4435**

TABLE OF CONTENTS

TABLE OF CONTENTS	2
SPECIFICATIONS	4
Basic Information	4
Dimensions	4
Speed, Capacities and Weight	4
Accommodations	4
Hull and Deck Information	4
Engine Information	4
DETAILED INFORMATION	5
2012 42 Viking Open	5
Exclusions	10
Disclaimer	10
PHOTOS	11
Salon	11
Salon	11
Salon	11
Galley	11
Galley	11
Master Stateroom	11
Master Stateroom	12
Guest Stateroom	12
Head	12
Helm Deck	12
Helm Deck	12
Helm Deck	12
Helm Deck	13
Helm Deck	13
Helm Deck	13

Helm Deck	13
Cockpit	14
Cockpit	14
Cockpit	14
Cockpit	14
Engine Room	14
Engine Room	14
Bow	15
Engine Room	15
Stern	15
CONTACTS	16
Contact details	16
Telephones	16
Office hours	16
Address	16

SPECIFICATIONS

Basic Information

Category: Sport Fisherman

Model Year: 2012

Year Built: 2011

Country: United States

Dimensions

LOA: 42' 0" (12.80m)

Beam: 15' 10" (4.83m)

Max Draft: 3' 5" (1.04m)

Speed, Capacities and Weight

Water Capacity: 120 Gallons

Fuel Capacity: 525 Gallons

Accommodations

Total Cabins: 2

Hull and Deck Information

Hull Material: Fiberglass

Engine Information

Engines: 2

Manufacturer: Cummins

Model: QSC-600 with Zeus Drive

Engine Type: Inboard

Fuel Type: Diesel

DETAILED INFORMATION

2012 42 Viking Open

Mia Elise is an incredible buying opportunity. The owner has taken delivery of his new Viking and has offered this exceptional 42 open for sale. The Sky Hook feature allows the boat to remain stationary without anchoring. This feature makes deep dropping easy. The Zeus Pod Drives allow the most novice of boat handlers to look like a pro. If you are considering a late model express boat, do not miss this opportunity. This boat has been maintained by a professional crew and awaits your white glove inspection.

DÉCOR:

GLOSS FINISH THROUGHOUT

WRAPPED HATCH CARPET INSTALLATION

CARPET, SHAW "NATURES TOUCH"

CUSTOM HEADLINER MATERIAL THROUGHOUT BOAT DESERT SAND SYMPHONY

BRUSHED NICKEL HARDWARE THROUGHOUT

BRUSHED NICKEL COVERPLATES FOR SWITCHES AND RECEPTACLES THROUGHOUT

SATIN NICKEL INTERIOR LIGHT TRIM THROUGHOUT

LED INTERIOR LIGHTS THROUGHOUT

SALON

ULTRA LEATHER SETTEE WITH TABLE

VIKING HOME THEATER

DIMMERS FOR QUARTZ LIGHTS

ROD STORAGE IN SALON AND AFT STRM

AMTICO FLOORING

GALLEY

UNDERCOUNTER REFRIGERATOR AND FREEZER WITH DOORS

COUNTERTOP CORIAN COLOR: BURLLED BEACH

CORIAN COUNTERTOP HIGH POLISHED

CUSTOM AMTICO FLOORING IN GALLEY TEAK AND HOLLY

TWO BURNER SURFACE MOUNTED RANGE

FAUCET TO BE STAINLESS STEEL

MASTER STATEROOM

CUSTOM WALLPAPER INSTALLATION KOROSEAL CAVOLLA

DIMMERS ON OVERHEAD LOW-VOLTAGE AC LIGHTS

19" FLAT SCREEN TELEVISION

QUEEN BERTH WITH MATTRESS UPGRADE

MASTER HEAD

CUSTOM WALLPAPER KOROSEAL CAVOLLA STRIA

CORIAN VANITY COUNTERTOP WITH BONE SINK, BURLLED BEACH; POLISHED

BRUSHED ALUMINUM SHOWER DOOR

SHOWER FIXTURES SATIN NICKEL

TOWEL BARS & RINGS BRUSHED NICKEL

FAUCET SATIN NICKEL

HEAD SEALAND HEAD SYSTEM

HEAD SHOWER FIXTURE AND FAUCET UPGRADE TO GROHE

GUEST STATEROOM - AFT

TWIN SIDE BY SIDE BERTHS

UPGRADE D MATTRESSES

ELECTRONICS

(2) GARMIN 7212 CHARTPLOTTER

GARMIN 1206 RADAR, 12 KW with 4' ARRAY

GARMIN GSD22 SOUNDER

GARMIN B258 TRANSDUCER with 1KW

GARMIN ANTENNA XM WEATHER RECEIVER

GARMIN AUTOPILOT INCLUDED IN SKYHOOK

(2) ICOM VHF RADIO

ANTENNA MOUNT RUPP AME TOWER/HARDTOP

SHAKESPEARE VHF ANTENNA

LUMISHORE UNDERWATER LIGHTS

SKYHOOK

HELM

FIBERGLASS HELM POD

ELECTRONIC SINGLE-LEVER CONTROLS FOR HELM POD

RECESSED ELECTRONICS BOXES

HELM AIR CONDITIONING

RELEASE MARINE TEAK HELM CHAIRS UPGRADE WITH STAINLESS STEEL PEDESTAL

(3)

PUSH BUTTON CATCHES FOR ELECTRONICS BOXES

VHF RADIO ICOM-504

TOWER

PALM BEACH TOWERS

CUSTOM TUNA TOWER

31' RUPP OUTRIGGERS COLLAPSIBLE

RUPP CENTER RIGGER

RECESSED LIGHTS

RADAR POD EXPRESS TRIANGULAR STYLE

RECESSED TEASER DOOR PUSH STYLE BRACKET

MOLDED ONE PIECE STANDING PLATFORM

MOLDED 2 IN 1 12V LED LIGHT POD

CONTROL BOX 60' WITH FLUSH MOUNTED COMPASS

TOWER SUNSHADE MOLDED TOP WELDED ANTENNA MOUNTS

ROD HOLDER POLISHED WELD TO RAIL BEHIND HARDTOP

ROD HOLDER POLISHED WELD TO AFT LEGS

OUTRIGGERS 31' – 2 SPREADER, AFT LAY DOWN

ELECTRIC CONTROLS AND STEERING FOR POD DRIVE

NAV LIGHTS PORT AND STARBOARD, MOLDED

STERN LIGHT, MOLDED

HANDRAILS WELDED TO SIDES HARDTOP PERIMETER RAIL

BENCH SEAT WITH BACKREST

ENCLOSURE 4 SIDED STANDARD GLASS, TRACK TO TRACK

U-ZIPS AFT ENCLOSURE

ENGINE ROOM

OIL CHANGE SYSTEM FOR ENGINES AND GENERATOR

AWLGRIP BRASS THRU-HULLS AND SEA STRAINERS IN ENGINE RM AND FWD BILGES

FUEL FILTERS SNOW WHITE

GENERATOR GAS-WATER SEPARATOR FOR STD GENERATOR

GENERATOR, ONAN 9 KW

COCKPIT

TRANSOM COAMING WITH GATE AND WITH TRANSOM FISH BOX

RECESSED DOCKSIDE BOXES WITH FIBERGLASS DOORS AND GAFF STORAGE

COCKPIT FREEZER AND REFRIGERATED DRINK BOX

MEZZANINE COCKPIT

RELEASE MARINE TEAK BATTLE SADDLE WITH 4 ROD ROCKET LAUNCHER

TRANSOM SWIM STEPS

AWLGRIP LAZARETTE

(2) 12 VOLT ELECTRIC REEL OUTLETS

DECK

BOW PULPIT

LEWMAR V2 SS WINDLASS (GYPSY AND DRUM)

FRESH WATER WASHDOWN AT BOW INSIDE ANCHOR LOCKER

INSTALL SS GAS SPRINGS FOR ANCHOR LOCKER HATCH

HULL

SNOW WHITE

BOTTOM PAINT BLACK

BOOT STRIPE VIKING STD BLACK

FIBERGLASS SIDE THRU-HULLS

Exclusions

Owner's personal belongings.

Disclaimer

The Company offers the details of this vessel or yacht in good faith but cannot guarantee or warrant the accuracy of this information nor warrant the condition of the vessel. A buyer should instruct his representatives, agents, or his surveyors, to investigate such details as the buyer desires validated. This vessel or yacht is offered subject to prior sale, price change, or withdrawal without notice.

PHOTOS

Salon



Salon



Salon



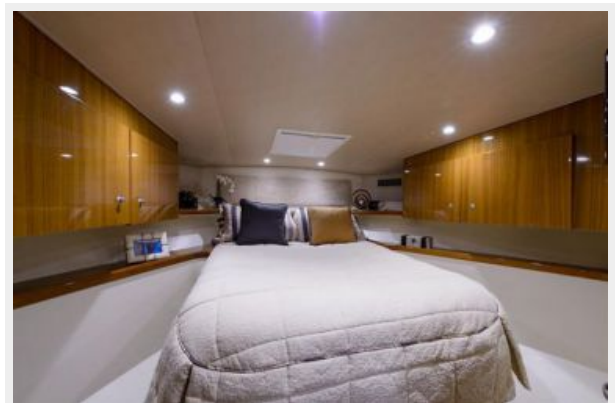
Galley



Galley



Master Stateroom



Master Stateroom



Guest Stateroom



Head



Helm Deck



Helm Deck



Helm Deck



Helm Deck



Helm Deck



Helm Deck



Helm Deck



Cockpit



Cockpit



Cockpit



Cockpit



Engine Room



Engine Room



Engine Room



Bow



Stern



CONTACTS

Andrey Shestakov, leading yacht broker of the sales department of Shestakov Yacht Sales Inc. Shestakov Yacht Sales Inc., the official representative of the Miami/Fort Lauderdale FL headquarters.

Contact details

Email: andrey@shestakovyachtsales.com

Web: shestakovyachtsales.com/en/

Telephones

USA: +1(954)274-4435

Office hours

Monday – Saturday: **9:00 - 21:00** EDT

Sunday: **closed**

Address



Harbour Towne Marina, 850 NE 3rd St,
STE 213, Dania, FL 33004