

MOONDANCER — VIKING



Builder: VIKING

Year Built: 2011

Model: Sport Fisherman

Price: PRICE ON APPLICATION

Location: United States

LOA: 70' 0" (21.34m)

Beam: 19' 7" (5.97m)

Min Draft: 5' 6" (1.68m)

Our experienced yacht broker, Andrey Shestakov, will help you choose and buy a yacht that best suits your needs **Moondancer — VIKING** from our catalogue. Presently, at Shestakov Yacht Sales Inc., we have a wide variety of yachts available on our sale's list. We also work in close contact with all the big yacht manufacturers from all over the world.

If you would like to buy a yacht **Moondancer — VIKING** or would like help answering any questions concerning purchasing, selling or chartering a yacht, please call **+1(954)274-4435**

TABLE OF CONTENTS

TABLE OF CONTENTS	2
SPECIFICATIONS	4
Basic Information	4
Dimensions	4
Speed, Capacities and Weight	4
Accommodations	4
Hull and Deck Information	4
Engine Information	4
DETAILED INFORMATION	5
Accommodations	5
Flybridge	5
Electronics and Navigational Equipment	5
Tower	5
Cockpit	5
Engine Room and Mechanical	6
Highlights	6
Exclusions	6
Disclaimer	6
PHOTOS	7
Salon	7
Salon	7
Day Head	7
Salon	7
Master Stateroom	7
Master Stateroom	7
Master Head	8
Master Head	8
Forward Guest Stateroom	8

Forward Guest Stateroom	8
Forward Guest Head	9
Guest Stateroom	9
Guest Head	9
Crew Stateroom	9
Crew Head	10
Flybridge	10
Flybridge	10
Flybridge	10
Flybridge	10
Cockpit	10
Cockpit	11
Engine Room	11
Engine Room	11
Engine Room	11
Engine Room	11
Engine Room	11
Engine Room	12
Moondancer	12
Moondancer	12
CONTACTS	13
Contact details	13
Telephones	13
Office hours	13
Address	13

SPECIFICATIONS

Basic Information

Category: Sport Fisherman

Model Year: 2011

Year Built: 2011

Country: United States

Dimensions

LOA: 70' 0" (21.34m)

Beam: 19' 7" (5.97m)

Min Draft: 5' 6" (1.68m)

Speed, Capacities and Weight

Displacement: 123876 Pounds

Accommodations

Total Cabins: 4

Total Heads: 4

Hull and Deck Information

Hull Material: Fiberglass

Engine Information

Engines: 2

Manufacturer: MTU

Model: 16V2000

Engine Type: Inboard

Fuel Type: Diesel

DETAILED INFORMATION

Accommodations

The layout of this 70' Viking convertible is the envy of the industry. A sumptuous 4 stateroom/4 head layout below, and a customized salon/galley/dinette/day head living area on the main deck, beckons you to come aboard and relax. Upgraded fabrics, wallpaper, granite, flooring, headliner, and carpet were incorporated into a luxurious and tasteful custom décor.

Flybridge

Center console helm design, (3) Murray teak helm chairs, Ultraleather cushions with covers, teak helm pod, Octoplex touch screen system, ice maker control panel, watermaker control panel, single lever controls with bow thruster controls, air horn, helm cover, custom Ultraleather upholstery on all seating, large freezer, refrigerated drink box, fresh water wash down, sink with fresh water, electronics battery bank with charger.

Electronics and Navigational Equipment

Furuno 96 mile radar, (2) Furuno Navnet 3D processors with NOAA charts, Bahamas vector charts & photos, Furuno Navnet 3D 1-3KW sounder, (3) 17" LED KEP monitors, Simrad AP2403 autopilot, (2) Icom M604 VHF radios, KVH FB150 tracphone, Furuno RD30 depth finder, Furuno AIS, KVH HD7 SAT TV, FLIR M626L night vision system, Carlisle & Finch 200W spotlight, EPRIB, (5) Direct TV receivers, Panasonic cellular & satellite phone system, SIRUS SAT weather, Fusion 600W stereo, Magellen alarm system, HP printer/scanner/fax/copier, WIFI system.

Tower

Palm Beach Towers tuna tower package includes: molded fiberglass top and sunshade, (3) sided EZ2CY enclosure with vents, (2) LED lights in sunshade, (4) LED lights on the underside of standing platform, (6) LED lights on bridge, MIYA Epoch US9 teaser reels, 48' Rupp hydraulic outriggers, Rupp center rigger, tower wash down, starts and stops, thruster control, trim tab controls and electronic steering. Tower electronics include Furuno Navnet 3D, Furuno RD30 remote depth finder, ICOM command Mic VHF & Compass.

Cockpit

Seakeeper M26000, teak cockpit and mezzanine, custom upholstered cushions, mezzanine air conditioning, Murray fighting chair with offset pedestal and cover, (2) refrigerated cockpit fish boxes with split lids and dividers, ice machine discharge in mezzanine ice box, refrigerated drink

box in entry step, refrigerated mezzanine bait box with stainless steel bait trays, dual thermostatic refrigerator/freezer box outboard in mezzanine, (5) 12 Volt outlets under gunwales, transom gate, cockpit cover, removable cockpit sun shade, EZ2CY side curtains, LCD display in day head window, Fusion remote for 2-JL cockpit speakers, (4) LED lights tri color, red, white & green in cockpit overhang, green and white rope lighting, (8) Rupp swivel rod holders, transom fishbox plumbed for live well, fresh and salt water wash downs, port and starboard lockers under coaming, security camera.

Engine Room and Mechanical

16V2000 2600HP MTU engines (1950 hours), (2) 27.5KW Onan Generators with gas/water separators, Awlgripp'd thru hulls and pumps, dual Racor fuel filters, oil change system with line to cockpit, Charles auto phase power transformer, battery charger, underwater exhaust system, centralized sea water system with (2) pumps for all equipment cooling needs, Delta T ventilation system, electric fuel priming pumps, fire suppression system, Sea Recovery 1400 GD water maker, (4) cameras.

Highlights

Seakeeper M26000, Mist Green hull, MTU extended propulsion coverage until January 2016, 2000 hr MTU service completed, 8 Ocean LED underwater lights, Lewmar windlass, custom stainless steel anchor fairlead, anchor & chafe guard, extra fuel capacity, spare propellers, bow thruster, full carpet runners, sofa covers.

Exclusions

Owner's personal belongings.

Disclaimer

The Company offers the details of this vessel or yacht in good faith but cannot guarantee or warrant the accuracy of this information nor warrant the condition of the vessel. A buyer should instruct his representatives, agents, or his surveyors, to investigate such details as the buyer desires validated. This vessel or yacht is offered subject to prior sale, price change, or withdrawal without notice.

PHOTOS

Salon



Salon



Salon



Day Head



Master Stateroom



Master Stateroom



Master Head



Master Head



Forward Guest Stateroom



Forward Guest Stateroom



Forward Guest Head



Guest Stateroom



Guest Head



Crew Stateroom



Crew Head



Flybridge



Flybridge



Flybridge



Flybridge



Cockpit



Cockpit



Engine Room



Engine Room



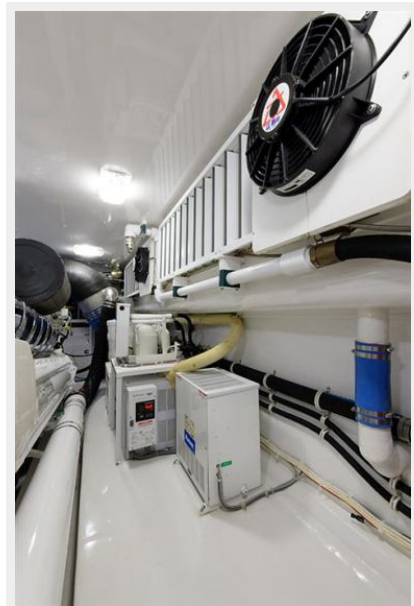
Engine Room



Engine Room



Engine Room



Engine Room



Moondancer



Moondancer



CONTACTS

Andrey Shestakov, leading yacht broker of the sales department of Shestakov Yacht Sales Inc. Shestakov Yacht Sales Inc., the official representative of the Miami/Fort Lauderdale FL headquarters.

Contact details

Email: andrey@shestakovyachtsales.com

Web: shestakovyachtsales.com/en/

Telephones

USA: +1(954)274-4435

Office hours

Monday – Saturday: **9:00 - 21:00** EDT

Sunday: **closed**

Address



Harbour Towne Marina, 850 NE 3rd St,
STE 213, Dania, FL 33004