

KATYA — DELTA



Судостроитель: DELTA

Год постройки: 2009

Модель: Моторная яхта

Цена: **ЦЕНА ЯХТЫ ПО ЗАПРОСУ**

Местонахождение: United States

Длина общая: 151' 0" (46.02m)

Ширина: 31' 8" (9.65m)

Макс. осадка: 9' 2" (2.79m)

Крейс. скорость: 12 Kts. (14 MPH)

Макс. скорость: 16 Kts. (18 MPH)

Купить **Katya — DELTA** а также выбрать подходящую вам яхту из нашего каталога яхт вам поможет опытный яхтенный брокер Андрей Шестаков. На сегодняшний день компания **Shestakov Yacht Sales Inc.** имеет большое количество яхт в собственном списке продаж, а также тесно сотрудничает со всеми крупными яхтенными производителями по всему миру.

Для того чтобы купить яхту **Katya — DELTA** а также проконсультироваться по любому вопросу связанному с покупкой, продажей, чартером яхт позвоните по телефону **+7(918)465-66-44**.

ОГЛАВЛЕНИЕ

ОГЛАВЛЕНИЕ	2
ХАРАКТЕРИСТИКИ	3
Обзор	3
Основная информация	3
Размеры	3
Скорость, вместимость и масса	4
Размещение	4
Корпус и палуба	4
Информация о двигателе	4
ПОДРОБНОЕ ОПИСАНИЕ	5
Basic Information	5
Accommodations	5
Machinery	6
Communication and Navigation	6
Galley and Laundry	7
Deck Equipment	8
Safety & Fire Protection	8
Tenders and Toys	8
Disclaimer	8
Исключения	9
Отказ от ответственности	9
ФОТОГРАФИИ	10
КОНТАКТЫ	27
Контактная информация	27
Телефоны	27
Время работы	27
Адрес	27

ХАРАКТЕРИСТИКИ

Обзор

PRICE REDUCTION

CALL FOR PRICE DETAILS

KATYA was built for an experienced yachtsman who spared no expense to get the perfect boat. She was built by a hand-picked supervisory team at one of the premier yacht builders in the world. She boasts both exceptional exterior and interior designs using the finest marbles, woods and fabrics, all adding up to a yacht that was awarded the "Finalist in the World Superyacht Awards 2010". KATYA is found in "like new" condition, lightly used, perfectly kept and ready to cruise at a moment's notice to anywhere in the world. Her recent exterior paint job offers a new finish, but more importantly the dedication the owner of KATYA has to keeping her in perfect condition for her next owner. Her 472 GRT is in keeping with the volume of yachts much larger than KATYA.

Katya has just completed new 5 year Lloyds & Cayman Island class survey.

Основная информация

Тип судна: Моторная яхта

Модельный год: 2009

Год постройки: 2009

Страна: United States

Открытая палуба мостика: Да

Кубрик: Да

Размеры

Длина общая: 151' 0" (46.02m)

Ширина: 31' 8" (9.65m)

Макс. осадка: 9' 2" (2.79m)

Скорость, вместимость и масса

Крейс. скорость: 12 Kts. (14 MPH)

Макс. скорость: 16 Kts. (18 MPH)

Дальность на макс. скорости: 5000 Kts. **Вместимость воды:** 6000 Gallons

Объем топливного бака: 20782 Gallons

Размещение

Всего кают: 5

Всего коек: 7

Каюты экипажа: 5

Спальных мест экипажа: 10

Корпус и палуба

Материал корпуса: Composite

Цвет корпуса: White

Дизайнер корпуса: Delta Design Group (USA)

Дизайнер экстерьера: Delta Design Group (USA)

Дизайнер интерьера: Delta Design Group/Jean Claude Canestrelli

Информация о двигателе

Двигатели: 2

Производитель: Caterpillar

Модель: 3508B

Тип двигателя: Inboard

Тип топлива: Diesel

ПОДРОБНОЕ ОПИСАНИЕ

Basic Information

Length Overall: 150.11 feet (46.00 meters) **Beam (molded):** 31.8 feet (9.7 meters) **Draft (loaded):** 9.20 feet (2.90 meters) **Model Year:** 2009

Type: Full Displacement Oceangoing Motoryacht **Flag:** Cayman Islands **Tonnage:** 472 gross

Builder: Delta Marine (USA) **Naval Architect:** Delta Design Group (USA) **Exterior Design/Stylist:** Delta Design Group (USA) **Interior Designer/Stylist:** Delta Design Group/Jean Claude Canestrelli **Construction:** Fiberglass hull and superstructure, teak decks **Classification:** Lloyds, MCA Compliant

Main Engines: (2) Caterpillar 3508B diesels @ 1,000 Hp each **Electrical:** (2) 130 kW Northern Lights generators

Speed: Maximum: 16 knots Cruising: 12 knots **Range:** 5,000 nautical miles @ 12 knots

Tankage: Fuel: 20,782 US Gallons (78,661 liters) Water: 3,000 US Gallons (11,356 liters)

Accommodations: Sleeps up to 12 in the owner's party in 5 staterooms plus crew accommodations for up to 10 in 5 cabins.

Accommodations

KATYA, Finalist in the World Superyacht Awards 2010, is the fifth yacht built from Delta's full-displacement design and is Lloyds Classed and MCA compliant. She was built to travel the world's oceans and has completed her 5 year Lloyds survey to prepare her for just such adventures. Her recent complete exterior paint job offers a new finish, but more importantly the dedication the owner of KATYA has to keeping her in perfect condition for her next owner.

KATYA's owner wanted to create an interior that was elegant yet comfortable with spaces suitable for a family at home on the seas. Working in collaboration with their designers, Jean-Claude Canestrelli and the Delta Design Group, the interior is all about richness and warmth. The woods chosen, dark Khaya veneers and Cinamora burls accented by Maple, Amboina burls and Mahogany, provide an elegant contrast to her light furnishings in marble, leather and rich fabrics and the natural light from the impressively large main deck windows.

KATYA's main salon is surrounded by breathtaking views through large windows and curved glass entry doors flanked with a mirrored set of handsome bar cabinets. Guest and service traffic will flow easily forward past the glass encased art displays into the dining salon where a custom mahogany dining table is anchored with a bow-front hutch. Matching buffets, both port and starboard, are finished in Crotch Mahogany with inlays of Breccia Vendome stone.

KATYA can comfortably accommodate 12 guests in five staterooms. The full-beam Master is located forward on the main deck and features a huge bathroom with shower and tub, ample storage and spacious closets. The Master also features large hull-side windows perfect for taking in the morning sunshine or enjoying a moonlit starry sky.

Her four very spacious staterooms below include two VIPs with king berths, en suite baths, ample storage and closets. The third guest cabin has a queen berth, en suite with large bathroom and ample storage and closets. Her fourth cabin is the 'Katya Cabin', which is specifically designed to accommodate up to four children with a double bed, single bed and an additional Pullman berth. Like the main living spaces, the guest areas feature warm tones, satin finishes and soft upholstered wall panels.

Machinery

MAIN ENGINES (2) Caterpillar 3508B Gearboxes for Main Engines: Reintjes ratio: 08:1/3.995:1

SPEED/CONSUMPTION PER HOURS/RANGE/RPM Maximum: 16 knots Economical: 13 knots/70 gph/3523nm/1400 rpm

GENERATORS AND ELECTRICITY (2) Northern Lights 130kw Generator Fuel Consumption: 635.88 l @ 90kW Load Shore Power: 208V, 3 Phase/60HZ

BATTERIES (2) 255 12v; AH/24v (50 amp charger) (2) 255 AH/24v (50 amp charger)

AIR CONDITIONING Dometic Environmental 36 ton

OTHER MACHINERY Watermaker: Sea Recovery 3600 gpd Trim Tabs/Stabilizers: Quantum 1800 Bow Thruster: Quantum QT-150, 150 hp Steering System: Jastram 2-300-16-2-37 (3403 hrs) Fuel Separator & Filtration: Westfalia WTC-2-03-107 Sewage System: Tidal Wave by HeadHunter System Fresh Water System: Sea Recovery - Coral Sea 3000 gallons Lube Oil Capacity: 1100 liters Waste Oil Capacity: 1100 liters

Communication and Navigation

SATCOM Thrane & Thrane Fleet 77 Seatel VSAT system

CELLULAR SYSTEMS (2) Ericsson dual band GSM American and European Frequencies

VHF RADIO/TELEPHONES Furuno FM8800S 25 watt VHF w/DSC (Helm) Separated CH70 receiver Standard GX5000S VHF black (Crew) Furuno Felcom 15 standard C terminal with GPS Furuno PP510 24VDC Printer

SSB RADIO/TELEPHONE Furuno

TELEPHONE SYSTEM Panasonic KX-TDA 200

MAGNETIC COMPASS Richie

GYRO COMPASS C Plath Navigat-X MK11

AUTOMATIC PILOT C-Plath Navipilot 4000

WIND/ SPEED LOG B&G

DEPTH SOUNDER Furuno RD 30 depth display (Helm)

VIDEO SOUNDER Furuno FCV 1200BB color

RADAR Furuno X-Band 120 Mile Range Furuno S-Band 120 Mile Range

LASER PLOTTER Transas NS30001

GPS Northstar 6K6 6100i 6.4" (Nav Station) AN156 High Gain Combo GPS & WAAS antenna Northstar 6K6 6100i 6.4' GPS (Helm)

NAVTEX Furuno NX700 receiver H Field antenna

AIS Furuno FA150 with automatic identification system

SONAR Furuno

Audio and Visual Equipment

VIDEO EQUIPMENT (9) Sharp TV's

AUDIO EQUIPMENT Crestron central ship's audio (9) Rotel DVD's (9) Apple iPod Stations

Galley and Laundry

MAIN GALLEY Cospolich Model WIC Cospolich Model R/F35-2MADSR-MLR (2) Miele Model H4880BP ovens Miele grill and microwave (3) Sub Zero refrigerators and (3) Sub Zero freezers Miele Model G2670 SC SF Dishwasher Kitchen Aid Model KUDD01DPPA Drawers

CREW GALLEY/MESS EQUIPMENT Sub Zero refrigeration and freezer

ADDITIONAL GALLEY EQUIPMENT Kitchen Aid icemakers Kitchen Aid trash compactor Miele warming drawer Model 6505910 Miele steam oven Model DG 2661 Refer Drawers Marvel Model 80RD Diva cooktop Model DDP50 Glo Ray overhead food warming fixture Model GRAIH-66 Instahot Franke Butler 2000 Model HT-200 Little Sea Gull IV filter cartridge Part No. 789000

LAUNDRY (3) Miele washers crew area (3) Miele dryers crew area

Deck Equipment

ANCHOR WINDLASS Maxwell vertical SY-22 series

AFT WARPING CAPSTANS (2) Main deck aft Type Maxwell 6000

ANCHOR (2) Stockless

ANCHOR CHAIN 400' – 300'

BOAT CRANE & DAVITS Nautical Structure with 2500 capacity

Safety & Fire Protection

SAFETY (3) Life Rafts

Life Rings Perry Buoy 30" Orange Solas Perry Buoy 30" (101152) custom painted to match vessel "fleet white" with custom name and hailing port to match font on vessel Pains Wessex line thrower 250 complete EA stearns 100' Man overboard line throw bag, orange Pains Wessex Solas MOB 360 orange smoke with strobe and bracket EA MOB Line, C-line, with Solas strand (to be 30m in length by regulations)

Life Jackets Remploy Falcon 275 Solas inflatable PFD lifejacket red with whistle and light

SECURITY Altinex CCTV System (10) Cameras (2) Monitors (2) Safes

Tenders and Toys

TENDERS 19' Nautica Lowboi Yanmar 6BY 260 11'9" Nautica Rib 12 jet weber 4-stroke 143

WATERSPORTS Bauer Jr. II dive compressor 10 sets of snorkeling equipment (2) Sets of Scuba Pro (2) Sea Doo GTI-155 (2) 50 lb. troll rods, (1) 30 lb., (1) Spin rod

Disclaimer

The Company offers the details of this vessel in good faith but cannot guarantee or warrant the accuracy of this information nor warrant the condition of the vessel. A buyer should instruct his agents, or his surveyors, to investigate such details as the buyer desires validated. This vessel is offered subject to prior sale, price change, or withdrawal without notice.

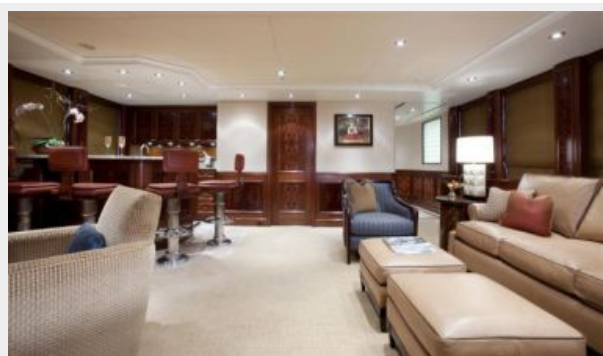
Исключения

При продаже яхты исключаются личные вещи владельца.

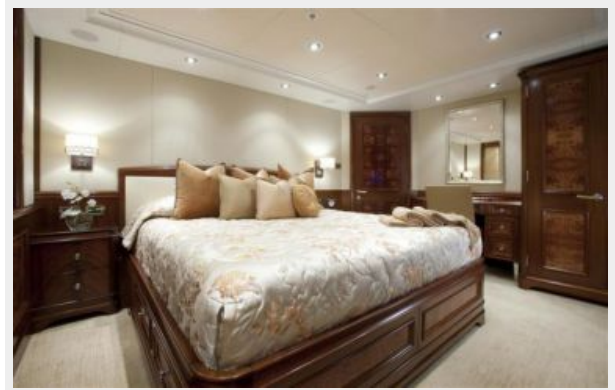
Отказ от ответственности

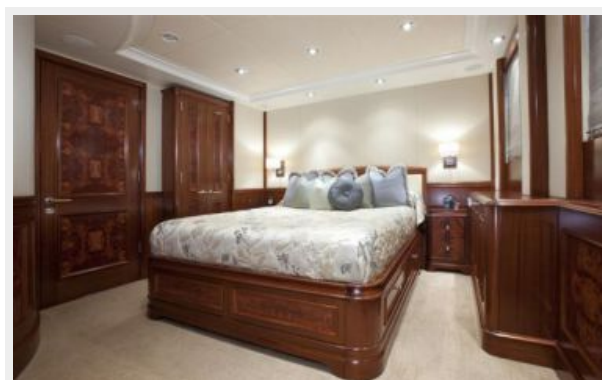
Компания предоставляет описание судна или яхты добросовестно, но не может гарантировать точность этой информации, а также не ручается за техническое состояние. Покупатель должен проинструктировать своих агентов или оценщиков исследовать представленную информацию более подробно, по собственному желанию. Продажа судна или яхты, изменение цены или снятие с продажи будет происходить без предварительного уведомления.

ФОТОГРАФИИ

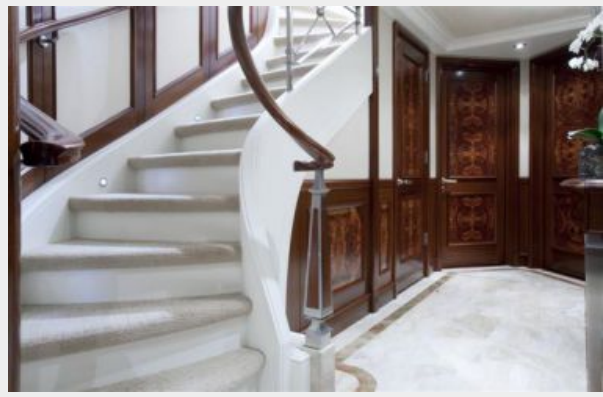


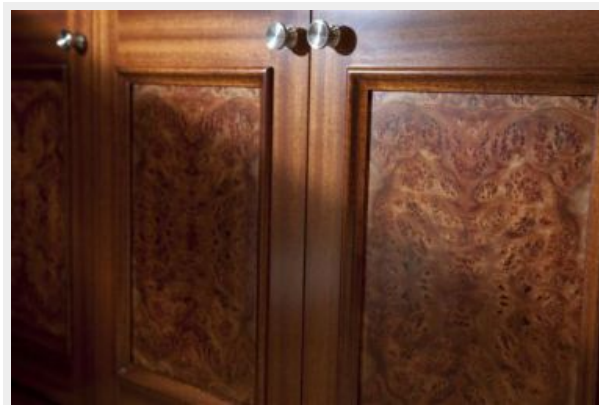


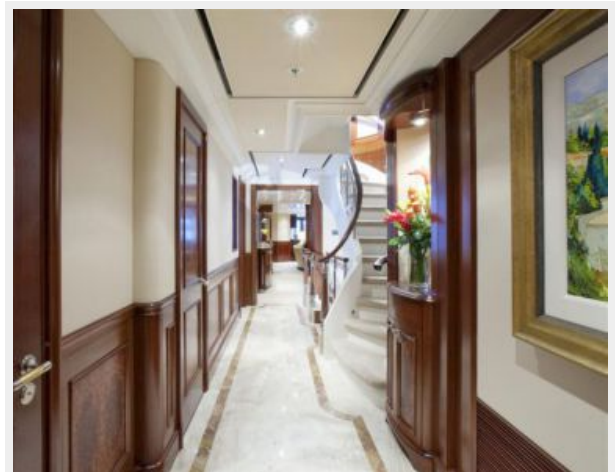


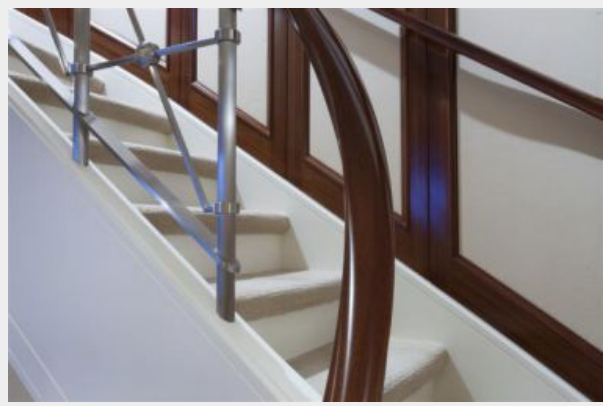


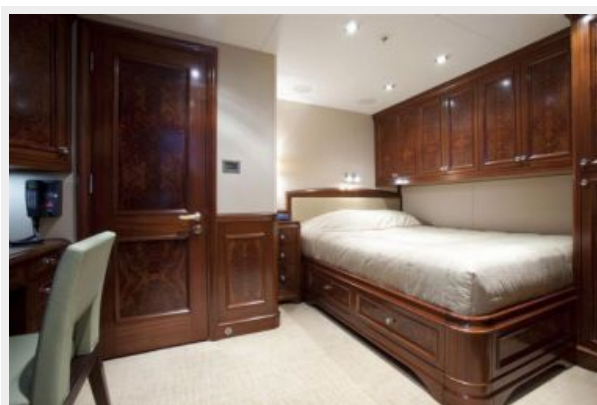
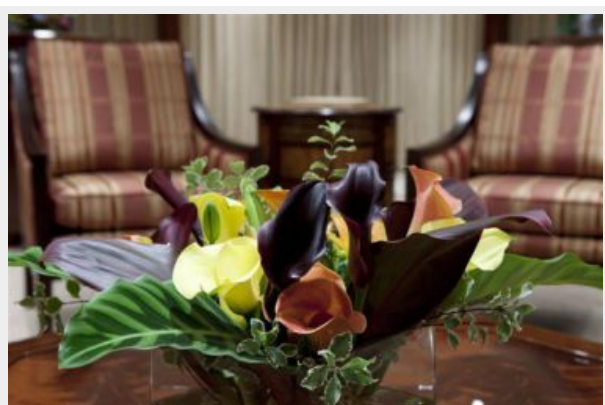


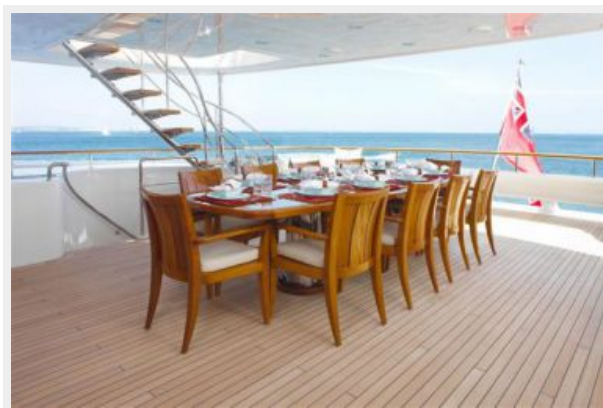


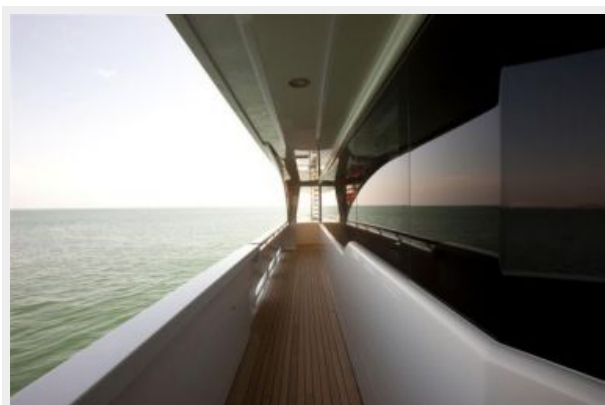




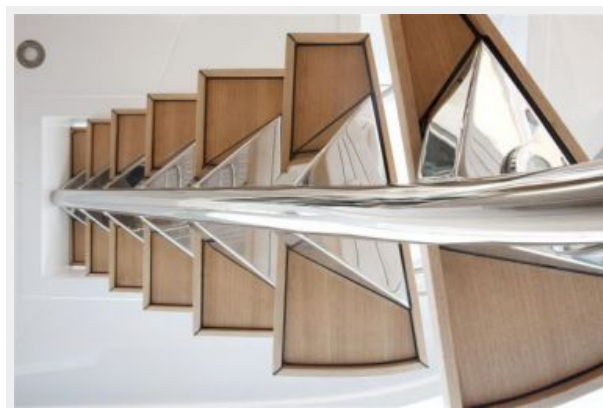
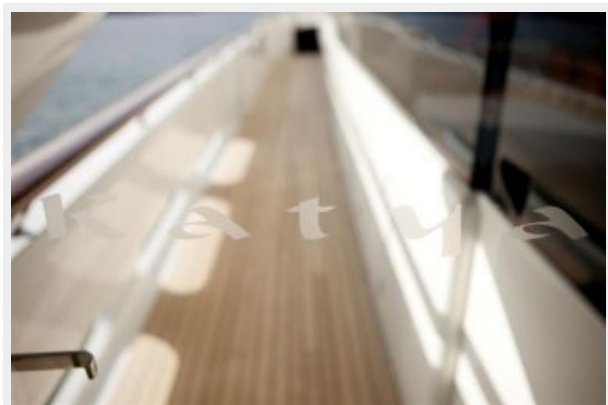


















КОНТАКТЫ

Андрей Шестаков (Andrey Shestakov) – ведущий яхтенный брокер отдела продаж яхт и судов компании Shestakov Yacht Sales Inc. Официальный представитель Shestakov Yacht Sales Inc. для русскоговорящих клиентов в центральном офисе компании в Майами/Форт Лодердейл/Флорида/США.

Контактная информация

Email: andrey@shestakovyachtsales.com

Web: shestakovyachtsales.com

Телефоны

Краснодарский край: **+7(918)465-66-44**

США, Майами, Флорида: **+1(954)274-4435**

Время работы

Понедельник – Суббота: **9:00 - 21:00**
EDT

Воскресенье: **Закрито**

Адрес



Harbour Towne Marina, 850 NE 3rd St,
STE 213, Dania, FL 33004