

## NIMROD — VIKING



**Builder:** [VIKING](#)

**Year Built:** 2011

**Model:** Sport Fisherman

**Price:** PRICE ON APPLICATION

**Location:** United States

**LOA:** 70' 0" (21.34m)

**Beam:** 19' 7" (5.97m)

**Min Draft:** 5' 6" (1.68m)

**Cruise Speed:** 33 Kts. (38 MPH)

**Max Speed:** 41 Kts. (47 MPH)

Our experienced yacht broker, Andrey Shestakov, will help you choose and buy a yacht that best suits your needs **Nimrod — VIKING** from our catalogue. Presently, at Shestakov Yacht Sales Inc., we have a wide variety of yachts available on our sale's list. We also work in close contact with all the big yacht manufacturers from all over the world.

If you would like to buy a yacht **Nimrod — VIKING** or would like help answering any questions concerning purchasing, selling or chartering a yacht, please call **+1(954)274-4435**

# TABLE OF CONTENTS

TABLE OF CONTENTS	2
SPECIFICATIONS	6
Overview	6
Basic Information	6
Dimensions	6
Speed, Capacities and Weight	6
Accommodations	7
Hull and Deck Information	7
Engine Information	7
DETAILED INFORMATION	8
Overview	8
Salon	8
Dinette	8
Galley	9
Master Stateroom	9
Master Head	9
Forward Stateroom	9
Port Stateroom	10
Crew Quarters	10
Helm	11
Flybridge	11
Electronics	11
Tower	14
Deck	15
Cockpit	15
Mechanical Equipment	16
Engine Room	16
General	17

Hull	17
Broker's Remarks	17
Exclusions	17
Disclaimer	17
PHOTOS	19
Salon	19
Galley	19
Master Stateroom	19
Helm	19
Salon/Galley	19
Salon	19
Salon/Dinette	20
Salon	20
Salon	20
Salon	20
Salon/Galley	20
Salon	20
Salon	21
Dinette	21
Galley	21
Galley/Salon	21
Electric Panel Salon	21
Galley	21
Master Stateroom	22
Master Stateroom	22
Master Head	22
Master Head	22
Master Head	23
VIP Forward	23

Storage Locker	23
VIP Forward	23
Head	24
Port Bunk Room	24
Port Bunk Room	24
Head	24
Head	25
Head	25
Port Bunk Room	25
Port Bunk Room	25
Head	26
Storage Room	26
Laundry	26
Companionway	26
Crew Quarters	27
Crew Quarters	27
Head	27
Head	27
Helm	28
Helm	28
Helm	28
Helm	28
Bridge Seating	29
Bridge Seating	29
Bridge Seating	29
Bridge Seating	29
Teaser Reels	29
Bridge Cooler Boxes	29
Bridge	30

Bridge	30
Ladder	30
Cockpit Cover	30
Tower	30
Bow	30
Fighting Chair	31
Fighting Chair	31
Cockpit	31
Cockpit	31
Cockpit	31
Cockpit	32
Cockpit	32
Engine Room	32
Engine Room	32
Engine Room	32
Engine Room	32
Generator	33
Engine Room Entrance	33
#1 Generator	33
#2 Generator	33
Profile	33
CONTACTS	35
Contact details	35
Telephones	35
Office hours	35
Address	35

---

# SPECIFICATIONS

---

## Overview

---

Nimrod, one of the nicest and best equipped late model Viking 70 Convertibles, just became available for immediate delivery. Knowledgeable 5 time Viking owner with same captain on all previous build Vikings. Awlgrip painted Snow White at Viking factory during build process. Hurricane stored during summer months and captain maintained. Low hours, always cruised at 1800 rpm or 2000 rpm on it's MTU 16V 2000 M93 engines. This boat is not one of those hard fished, go out and fish in all weather conditions. Owner likes to fish occasionally and not fish when weather is bad. She has never been run in harsh conditions. ***Extended MTU warranties through Oct. 19, 2015.***

## Basic Information

---

**Category:** Sport Fisherman

**Sub Category:** Convertible

**Model Year:** 2011

**Year Built:** 2011

**Country:** United States

## Dimensions

---

**LOA:** 70' 0" (21.34m)

**LWL:** 61' 5" (18.72m)

**Beam:** 19' 7" (5.97m)

**Min Draft:** 5' 6" (1.68m)

## Speed, Capacities and Weight

---

**Cruise Speed:** 33 Kts. (38 MPH)

**Cruise Speed RPM:** 2000 Kts.

**Max Speed:** 41 Kts. (47 MPH)

**Max Speed RPM:** 2450 Kts.

**Displacement:** 123876 Pounds

**Water Capacity:** 368 Gallons

**Holding Tank:** 211 Gallons

**Fuel Capacity:** 2600 Gallons

---

## Accommodations

---

**Total Cabins:** 4

**Total Heads:** 4

---

## Hull and Deck Information

---

**Hull Material:** Fiberglass

---

## Engine Information

---

**Engines:** 2

**Manufacturer:** MTU

**Model:** 16V 2000 M93

**Engine Type:** Inboard

**Fuel Type:** Diesel

---

# DETAILED INFORMATION

---

## Overview

---

Entrance to the salon is on port side of cockpit thru electric slider door. There is a custom rod locker immediately to port that can be converted into a day head if so desired. On the starboard is a large L-shaped sofa. Forward of the sofa is the U-shaped dinette area with storage cabinet in between. Forward of the custom rod locker are cabinets with retractable TV. There is a large island counter with custom sofa facing aft behind the fully appointed galley. Forward and to your left are the crew quarters. Forward and down the hallway is the Master Stateroom. Further forward and to port is an over/under bunk stateroom. Ahead of that is the 3rd stateroom with VIP crossover beds. Three complete heads service these staterooms.

## Salon

---

- High gloss finish throughout
- Upgraded Bose entertainment system
- Full canvas carpet runner
- Teak cockpit table
- Electric door opener
- Teak lambrequins IPO standard
- Teak and holly flooring at salon entrance
- 55" pop up television
- Teak valances
- Teak wire box
- Covers for table, sofas and ottoman
- Custom love seat in front of counter with (2) end tables
- Upgraded style sofa
- Cabinet with drawers in aft side of tackle room
- (2) Gang 110 Volt outlet forward of entertainment center
- Arm on sofa at salon door
- (2) Gang 110 Volt outlet between sofa and dinette
- Dimmers on overhead low voltage lights
- Dimmers on quartz lights
- Teak trim where Amtico floor meets carpet

## Dinette

---

- Teak dinette table with teak pedestal
- 110 volt outlet under dinette table
- Cover for dinette table



---

## Galley

---

- Trash compactor
- Granite custom countertop - Sahara
- Custom pullout in cabinet below cooktop
- Custom recessed cooktop with granite lids
- Custom teak backsplash in place of standard mirror
- Teak and holly floor in galley
- Stainless steel undermount sink
- Chrome faucet
- 110 Volt outlet above sink

---

## Master Stateroom

---

- System 3 upgrade
- Teak end tables
- 40" flat panel television
- Custom wall sconces above night stands
- Custom wallpaper behind headboard
- Additional telephone outlet
- Custom wallpaper
- Safe under lift up bed top
- Costa carpet runner
- Bunk extended to 6'8"

---

## Master Head

---

- Teak face on lower vanity
- Mirror around upper vanity insert
- Amtico teak and holly flooring
- All chrome fixtures
- White Headhunter heads
- Glacier White Corian vanity top and sink
- All lights on dimmer switches
- Custom wallpaper

---

## Forward Stateroom

---

- Mattress system 3 upgrade
- 26" flat screen television
- Teak face on lower vanity forward stateroom head

- Mirror around upper vanity forward stateroom head
- Amtico teak and holly floor forward stateroom head
- All fixtures chrome forward stateroom head
- White Headhunter head
- Custom Glacier Corian top and sink
- Forward bulkhead is teak
- Dimmer switches on all lights
- Costa carpet runner
- DVD player
- Custom wallpaper forward stateroom head
- Bed extended to 6'8"

---

## Port Stateroom

---

- Custom wallpaper
- Costa carpet runner
- 19" flat screen television
- Custom wallpaper in head
- DVD player
- Chrome hardware port head
- White Headhunter head
- Glacier White Corian vanity top and sink
- Extended bunks to 6'8"
- Dimmers on all light switches
- Mattress system 1 upgrade
- Amtico teak and holly floor in head

---

## Crew Quarters

---

- Mattress system 1 upgrade
- Amtico teak and holly floor in head
- Mirror around upper vanity
- All chrome hardware
- White Headhunter head
- Glacier White Corian vanity and sink
- All lights on dimmers
- Custom wallpaper
- Costa carpet runner
- Engine room access from crew quarters
- 19" flat screen television

---

## Helm

---

- Helm air conditioning
- Recessed electronic boxes
- Fiberglass helm pod
- Cigarette lighter style outlet
- Single lever controls with bow thruster buttons
- LED lights under console
- Electronic trolling valves
- (3) Custom Bluewater helm chairs (Just completely refinished by Bluewater)

---

## Flybridge

---

- Bridge freezer box
- Refrigerated flybridge drinkbox
- Remote genset gauge panels for both
- Stainles steel gas springs on flybridge bench seats
- Freshwater outlet on flybridge
- Bridge installed without exposed fasteners
- Dedicated batteries for electronics
- Custom Bluewater helm chairs
- LED lights under forward brow
- Refrigerated drinkbox in forward corner of bridge
- Bluewater chair backrest on port bench seat
- Custom L-shaped seating arrangement forward of center helm

---

## Electronics

---

### Radar:

- (1) Plotter Furuno Navnet 3d MFDBB Processor pre-loaded with NOAA Raster Charts for entire U.S. Coastline including Alaska and Hawaii
- (1) Radar Furuno Navnet 3d Drs25a 25kw 96nm ultra high definition radar
- (1) Radar Array 6' Furuno#Xn13a/6
- (1) Antenna Furuno Gp330b
- (1) Display Monitor Furuno 15" LCD Mu155c

### Plotter:

- (1) AIS Furuno FA50 black box 12/24vdc
- (1) Ethernet Hub Furuno Navnet 3d Hub101
- (1) Vhf Antenna 4' Vhf/AIS Comrod#Av51p-4
- (1) Sat Radio Sirius Radio Furuno Navnet BBW, requires Sirius Service Subscription

- (1) Gyration Go 2.4 wireless mouse & KYBD

**Plotter 2:**

- (1) Plotter Furuno Navnet 3d MDBB Processor , Pre-Loaded With NOAA Raster Charts for Entire Coastline Including Alaska and Hawaii
- (1) Antenna Furuno GP330b
- (1) Display Monitor Furuno 15" LCD MU155C
- (1) Gyration Go 2.4 Weries Mouse & Keyboard
- (1) Vga Cable 50' M-M Extron 26-238-04

**Sounder:**

- (2) Sounder Furuno DFF3 Navnet Furuno DFF3
- (1) Furuno/Airmar R-299 Variable Frequency Transducer Furuno R299ID-IHN
- (1) Furuno/Airmar R-399 Var Freq XDCR
- (1) Display Monitor Furuno 15" LCD MU155C

**Autopilot:**

- (1) Autopilot Simrad AP2801

**VHF:**

- (2) Antenna Mount Rupp AME Tower/Hardtop Pak
- (1) VHF Antenna VHF 17.5' Shakespeare
- (1) VHF Bracket Flush Mount F/502,602,802,Icom#Mb-75
- (1) VHF Radio ICOM IC-M604 Black
- (1) VHF Antenna VHF 17.5' Shakespeare
- (1) VHF Speaker External MB-41 Black, External Speaker Mounted In Teaser Reel Box
- VHF Radio ICOM IC-M604 Black
- (1) VHF Speaker External MB-41 Black, External Speaker Mounted In Teaser Reel Box

**Stereo:**

- (2) Stereo Speaker JL Audio 7.7" M770-TCS-W
- (1) Stereo Clarion CMD6 Cd/MP3/WMA Receiver
- (1) Sirius Radio Connect Tuner JBL SCC1BL
- (1) Amplifier JL Audio 4 Channel 100w

**Satcom:**

- (1) Satellite Phone KVH Fb150 Tracphone 01-0
- (1) Phone Stinger Ringer Line Powered Model 196 Mounted Overhead In Teaser Reel Box
- (1) Phone Panasonic 2 Line Cordless System
- (1) PC Switch RJ45 4 To 1 APC 1399, Manual A/B Switch To Wireless Access Point from Cell, Wi-Fi and Sat.

- (1) Wifi System Syrens ECAP-HP ,4' Wi-Fi Antenna Mounted Aft On Hardtop

**Camera:**

- (1) Camera Elbex Color Ball 4mm White
- (1) Camera Mount Elbex EMB9R-W Outdoor
- (2) Video Dist Amp MDA 5v Composite Video, 1 X 5 With Input Loop Thru, Extron Engine Room Camera Forward Center, Forward Facing Aft Display On 3 Helm Display

**Spotlight:**

- (1) Spotlight ACR RCL100 24v, Spotlight Mounted On Standing Platform, Controller On Bridge

**Sattv:**

- (2) Receiver Direct TV HR23 HD/DVR, KVH 19-0614 DVR Receivers for Master and Salon, Salon to also be Connected to Port Fwd S/R, View Salon DVR on Outboard Helm Display, Audio to Helm Stereo Aux Input
- (1) Satellite TV KVH Tracvision HD7
- (1) Amp MDA 3v Composite Video Amp 1 In 3 OU
- (2) DSS Receiver Direct TV Hi-Def H23 KVH 19, Fwd & Crew Stateroom
- (1) IR Repeater Complete System
- (1) A/V Ups Backup 350va APC
- (1) Bridge Nevo Connect RF NC-50
- (1) Docking Station IPOD Universal Remote Control PSX-2
- (1) Nevo Serial Module 1041 for Nevo Connect
- (1) Power Supply 12 Volt ERGPS Xantech 781ER
- (1) Sensor Connecting Block Current Xantech
- (1) Sensor Current Xantech CSM1
- (1) Voltage Sensor Nevo VS-1
- (1) Remote Control Nevo Q50 Color Touch Screen

**Safety:**

- (1) Alarm System Magellan AME Package, 2 Security and Tracking Includes Nav Tracker System, 3 Door Contacts
- (1) Relay Timer I2 Systems for 2WPGM Paradox

**Tower:**

- Display Remote Data Display Furuno#Rd30
- (1) VHF Command Mic ICOM HM-162 B Black
- (2) VHF Extension Command Mic ICOM OPC-1541 Command Mic Connected to Port Side Bridge Radio
- (1)VHF Radio ICOM IC-M604 Black
- (1)Vhf Antenna VHF 4' Comrod MFG#AV51-B1

- (1) VHF Speaker Hailer 5 Inch Spc-5p, Mounted Under Gunwale Connected to Hailer Output from Tower VHF

### Additional:

- (1) Epirb I Pro 406 Cat 1 Acr 2846
- (1) ACR 1 Pro 406 Cat 2 #2848
- (4) Underwater Light Deepsea HID-X 150w SS, 2 Mounted Out Transom and 2 Mounted Down

**Total: \$ 175,285.99**

## Tower

---

- 1) Tuna tower w/molded top 68' Convertible 10' gap, brushed pipe, (2) antenna, stand offs, 3 sided track on bimini rail
- (6) Hardtop lights, (12) systems w/fiberglass recess tri-color
- (1) Radar pod, bullet style, sliding door, bracket and runs for teaser reels
- (1) Instrument box electric fold down
- (1) Nav lights, port and starboard molded
- (1) Stern light molded
- (1) Molded standing platform w/ coupler box on platform
- (1) Molded 2 in 1 LED-24v Quartz light pod with s/s Bezel
- (1) Tower sunshade molded w/ internal tracks for wire runs, (4) welded antenna mounts
- (1) Bench seat w/ backrest
- (1) Antenna mount SAT TV dome, molded fiberglass
- (1) Antenna mount SAT phone on hardtop, molded fiberglass
- (1) Wash down water in tower
- (1) Control box 63" w/ flush mounted compass
- (2) Recessed electronics boxes w/ lids
- (1) MTU controls and steering, sturdy, M93
- (1) MTU engine displays mounted in drop down box
- (2) Round sturdy tachs mounted top control box
- (1) 45' Outrigger Rupp, "Big Riggs" 45' – spreader bridge release heavy aft bar
- (1) Outriggers Rupp
- (1) Rigger locks
- (1) Center Rigger Rupp
- (1) Bridge rail 3 sided double aft, leg to leg, to outer main legs
- (8) Rod holder polished weld to aft bridge rail, teardrop style
- (6) Rod holder polished aft legs 3-P-3-S, teardrop style
- (2) Electric teaser reels MIYA EPOCH US9-HD 24v
- (1) Flag staff aft
- (1) Enclosure 3 sided to aft end of bridge, track to track EZ2CY
- (1) Powder coated aluminum flangeless track

- (3) Air vent forward top panel
- (1) teaser reels, anchor/nav lights and bond tower, (3) Quartz lights
- (4) 12 System tri-color LED lights w/ fiberglass recess in platform
- (2) 12 System tri-color LED lights w/ fiberglass recess in tower sunshade
- (6) Upgraded tri-color hardtop lights
- (2) Tri-color LED lights in platform and (2) tri-color lights in tower sunshade
- (1) Air vent bottom center enclosure panel

**Total: \$165,520.00**

**\*\*Side aft enclosure panels snap up to hardtop when opened. All fiberglass parts painted to match boat. Inside of control box painted with Awlgrip.**

---

## Deck

---

- Bow pulpit
- Quick Argo windlass
- 600' line with 30' stainless steel chain
- Salon forward window mask
- Side mounted hand rails above salon windows
- Custom painted SAT dome, radar and antennas
- Painted rub rail (same as hull and topsides)
- Fresh water washdown inside anchor locker
- Custom polished stainless steel plow anchor
- LED lights inside anchor locker

---

## Cockpit

---

- Livewell in sole
- Transom box livewell with glass window and lights
- Refrigerated cockpit step box
- Transom coaming with gate
- Cockpit Cruisair "Cool Breeze" air
- Teak mezzanine
- Teak cockpit
- Transom swim steps
- 12 volt outlets under coaming each side
- Eskimo ice machine dumps in mezzanine box
- Bluewater fighting chair (just completely refinished by Bluewater)
- Awlgrip lazarette
- Grab rail on port side of salon door

- T valve for freshwater and saltwater washdowns
- Storage lockers under port and starboard coamings
- Quick disconnect port and starboard for on deck livewell
- Painted in-sole livewell box Atlantic Blue
- Light in bottom of livewell sole
- White and blue LED lighting
- DC LED lights in lazarette
- Red/blue/white LED lights in cockpit overhang

---

## Mechanical Equipment

---

- Additional fuel tank forward, total of (3) tanks
- DC bow thruster
- T installed in dockside water manifold
- MTU 16V 2000 M93-2400HP
- Twin generators
- Water maker
- Ice chipper

---

## Engine Room

---

- 1400 GPD watermaker with auto backflush
- Access door to crew's quarters
- Awlgrip all brass thru-hulls, sea strainers
- Awlgrip forward bilges
- Awlgrip fuel filters and all pumps
- Pumpout oil change hose run to cockpit
- Back-up fuel transfer pump in parallel
- Headhunter freshwater pump
- 100 volt outlets over port and starboard generators
- 100 volt outlet on forward bulkhead
- Auxillary DC freshwater pump
- 110 volt outlet on aft bulkhead entrance
- Clear acrylic shaft log covers
- Generator/gas/water separators for both gensets
- Charles autophase C power transformer
- Awlgrip exhaust surge tubes
- Paint engine room entrances Snow White
- Paint all tank tops Snow White
- Volume control for cockpit speakers per entrance
- Cameras on all areas of engine room viewed from helm



---

## General

---

- Underwater exhaust system
- Overboard discharge for all heads
- Entire exterior, all hatches, frames, painted Snow White Awlgrip
- Companionway Costa canvas runner
- Premier Edition décor
- Awlgrip forward bilge and anchor locker
- Magnetic switches for all bilge lights
- 10/3 wire run from helm to electrical panel, coiled
- Chrome door hardware throughout
- (2) Life rafts, (6) person each

---

## Hull

---

- Hull color Snow White factory painted
- Hull bottom paint black
- Fiberglass side thru-hulls
- Prop pockets to reduce draft

---

## Broker's Remarks

---

Nimrod is the fourth Viking sportfish owned by this knowledgeable client and run by the same captain. Not ever fished hard as with all his previous Vikings and maintained by captain and crew (not live aboard) with an open checkbook. Owner has purchased Viking's new 75 motor yacht and will probably end up with a smaller new Viking for day fishing and use the motor yacht as a home base in his travels.

Nimrod has been pampered and cared for throughout it's time on the west coast of Florida and stored in a hurricane yard during the summer months, thus the low hours. It is free of any issues and ready to go fish and travel now. The condition speaks for itself. A must see boat to consider if you are looking for a late model sportfish.

---

## Exclusions

---

Owner's personal belongings.

---

## Disclaimer

---

The Company offers the details of this vessel or yacht in good faith but cannot guarantee or warrant the accuracy of this information nor warrant the condition of the vessel. A buyer should

instruct his representatives, agents, or his surveyors, to investigate such details as the buyer desires validated. This vessel or yacht is offered subject to prior sale, price change, or withdrawal without notice.

# PHOTOS

**Salon**



**Galley**



**Master Stateroom**



**Helm**



**Salon/Galley**



**Salon**



Salon



Salon/Dinette



Salon



Salon



Salon/Galley



Salon



Salon



Dinette



Galley



Galley/Salon



Galley



Electric Panel Salon



**Master Stateroom**



**Master Stateroom**



**Master Head**



**Master Head**



**Master Head**



**VIP Forward**



**VIP Forward**



**Storage Locker**



**Head**



**Port Bunk Room**



**Port Bunk Room**



**Head**





**Head**



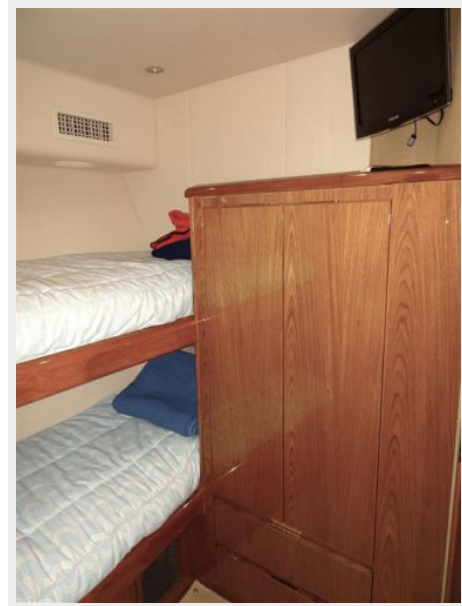
**Head**



**Port Bunk Room**



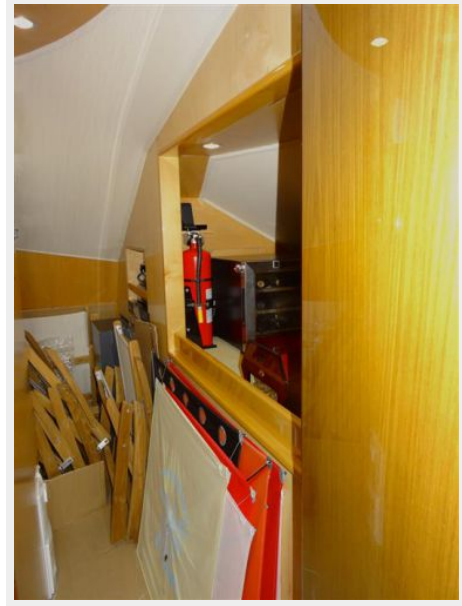
**Port Bunk Room**



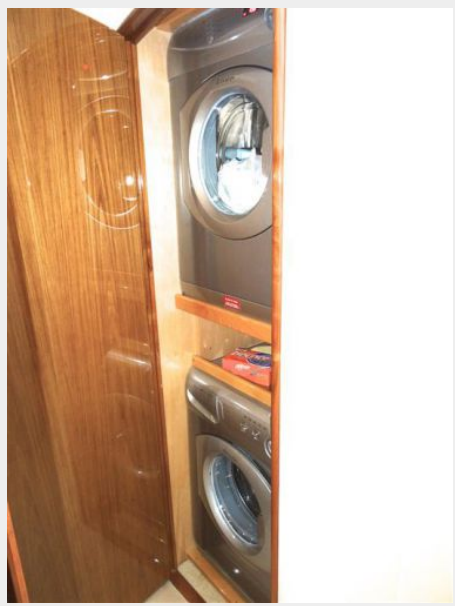
**Head**



**Storage Room**



**Laundry**



**Companionway**



**Crew Quarters**



**Crew Quarters**



**Head**

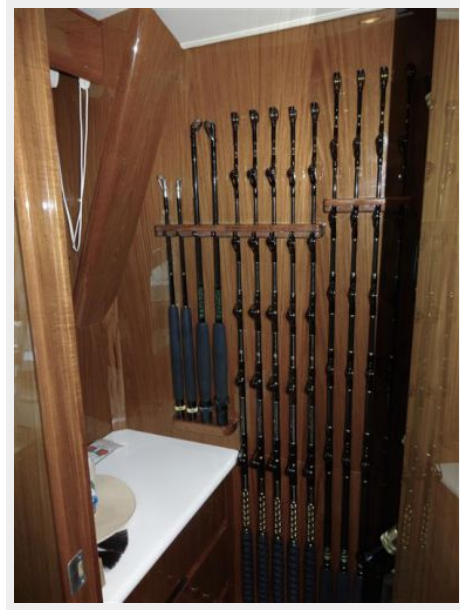


**Head**





Helm



Helm



Helm



Helm



**Bridge Seating**



**Bridge Seating**



**Bridge Seating**



**Bridge Seating**



**Teaser Reels**



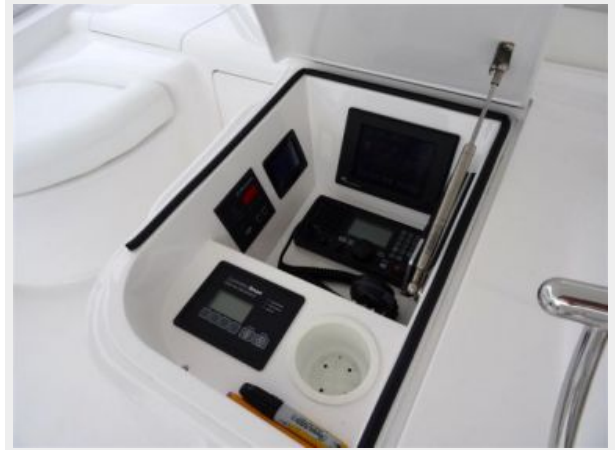
**Bridge Cooler Boxes**



**Bridge**



**Bridge**



**Ladder**



**Cockpit Cover**



**Tower**



**Bow**



**Fighting Chair**



**Fighting Chair**



**Cockpit**



**Cockpit**



**Cockpit**



Cockpit



Cockpit



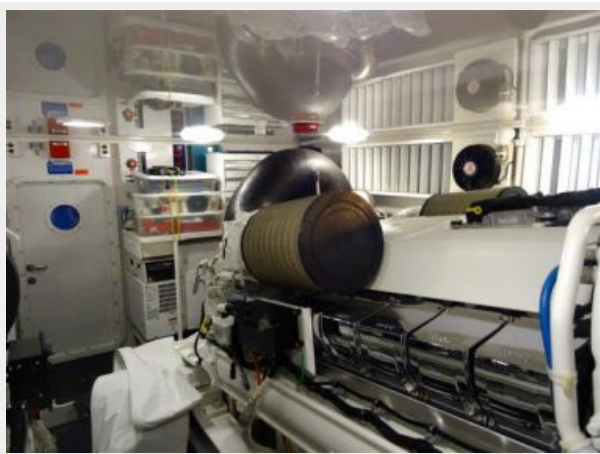
Engine Room



Engine Room



Engine Room



Engine Room





### Generator



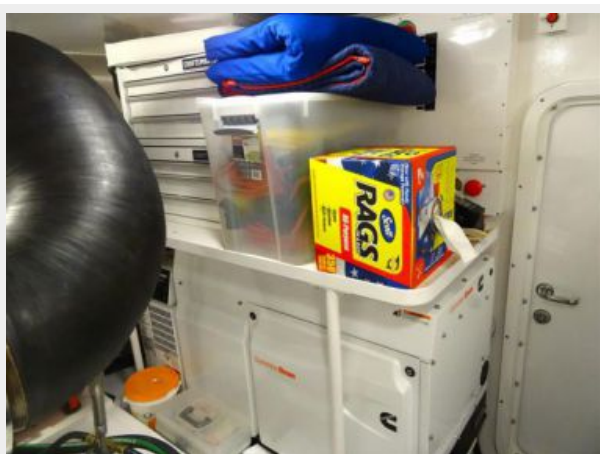
### Engine Room Entrance



### #1 Generator



### #2 Generator



### Profile





# CONTACTS

---

Andrey Shestakov, leading yacht broker of the sales department of Shestakov Yacht Sales Inc. Shestakov Yacht Sales Inc., the official representative of the Miami/Fort Lauderdale FL headquarters.

## Contact details

---

Email: [andrey@shestakovyachtsales.com](mailto:andrey@shestakovyachtsales.com)

Web: [shestakovyachtsales.com/en/](http://shestakovyachtsales.com/en/)

## Telephones

---

USA: +1(954)274-4435

## Office hours

---

Monday – Saturday: **9:00 - 21:00** EDT

Sunday: **closed**

## Address

---



Harbour Towne Marina, 850 NE 3rd St,  
STE 213, Dania, FL 33004