

## FRAYED KNOT — CABO



**Судостроитель:** CABO

**Год постройки:** 2004

**Модель:** Катер для спортивной рыбалки

**Цена:** ЦЕНА ЯХТЫ ПО ЗАПРОСУ

**Местонахождение:** United States

**Длина общая:** 35' 0" (10.67m)

**Ширина:** 13' 0" (3.96m)

**Макс. осадка:** 3' 0" (0.91m)

**Крейс. скорость:** 23 Kts. (26 MPH)

**Макс. скорость:** 28 Kts. (32 MPH)

Купить **FRAYED KNOT — CABO** а также выбрать подходящую вам яхту из нашего каталога яхт вам поможет опытный яхтенный брокер Андрей Шестаков. На сегодняшний день компания **Shestakov Yacht Sales Inc.** имеет большое количество яхт в собственном списке продаж, а также тесно сотрудничает со всеми крупными яхтенными производителями по всему миру.

Для того чтобы купить яхту **FRAYED KNOT — CABO** а также проконсультироваться по любому вопросу связанному с покупкой, продажей, чартером яхт позвоните по телефону **+7(918)465-66-44**.

# ОГЛАВЛЕНИЕ

ОГЛАВЛЕНИЕ	2
ХАРАКТЕРИСТИКИ	4
Основная информация	4
Размеры	4
Скорость, вместимость и масса	4
Размещение	4
Корпус и палуба	4
Информация о двигателе	5
ПОДРОБНОЕ ОПИСАНИЕ	6
General Description	6
Исключения	9
Отказ от ответственности	9
ФОТОГРАФИИ	10
Bow Profile	10
Starboard Profile	10
Bow Profile	10
Stern	10
Stern	10
Bow Profile	10
Port Profile	11
Port Profile	11
Stern	11
Cockpit	11
Cockpit	11
Cockpit	11
Cockpit	12
Cockpit	12
Cockpit	12

Flybridge	12
Flybridge	13
Flybridge Helm	13
Flybridge	13
Flybridge	13
Galley	14
Flybridge	14
Galley	14
Salon	14
Salon	14
Salon	14
Master Stateroom	15
Master Stateroom	15
Head	15
Master Stateroom	15
Head	16
Guest Stateroom	16
Engines	16
Engines	16
Engines	17
Engines	17
КОНТАКТЫ	18
Контактная информация	18
Телефоны	18
Время работы	18
Адрес	18

# ХАРАКТЕРИСТИКИ

## Основная информация

**Тип судна:** Катер для спортивной рыбалки

**Модельный год:** 2005

**Год постройки:** 2004

**Страна:** United States

## Размеры

**Длина общая:** 35' 0" (10.67m)

**Длина палубы:** 37' 6" (11.43m)

**Ширина:** 13' 0" (3.96m)

**Макс. осадка:** 3' 0" (0.91m)

**Трапы:** 21' 0" (6.40m)

## Скорость, вместимость и масса

**Крейс. скорость:** 23 Kts. (26 MPH)

**Макс. скорость:** 28 Kts. (32 MPH)

**Водоизмещение:** 20000 Pounds

**Вместимость воды:** 100 Gallons

**Вместимость сточного бака:** 11 Gallons

**Объем топливного бака:** 400 Gallons

## Размещение

**Всего кают:** 2

**Всего ком. состава:** 1

## Корпус и палуба

**Материал корпуса:** Fiberglass

## Информация о двигателе

---

**Производитель:** Caterpillar

**Модель:** 3126B

**Тип двигателя:** Inboard

**Тип топлива:** Diesel

---

# ПОДРОБНОЕ ОПИСАНИЕ

---

## General Description

---

This 35' Cabo Flybridge is a one owner well cared for sportfishing boat. "Frayed Knot" is a great example of a knowledgeable and detail orientated owner with all service up to date and records available for future owner. "Frayed Knot" features a 2 stateroom layout and great salon area for entertaining. Built to fish with Outriggers, Center rigger, chill plate in port fish box and rocket launcher in the 130sf cockpit. TRULY A MUST SEE!!!

### Recent Upgrades

Engine room insulation replaced August 2014 Bottom Job 2014 Underwater Lights added Dual freezer plates in port side box

### Manufacturer's Description

"The quality of our 35 Flybridge is legendary. She was the first boat off the CABO line in 1991, and over the years this pocket battle wagon has been called "bulletproof" and "a benchmark for construction, design, and bluewater performance" by some of sportfishing's most respected experts. In 1999, she was retooled from the keel up to incorporate technical improvements and increase accessibility to her systems and components. More than 300 hulls now fish the oceans of the world, making the 35 Flybridge one of our best-selling models ever."

### Vessel Walkthrough:

Solid teak woodwork throughout is elegant and durable with carefully crafted cabinet doors. The salon provides a perfect environment for relaxing or entertaining in elegant comfort. Five can dine comfortably at the starboard settee, and there is additional seating located portside, aft of the galley.

In the galley, Corian counter tops and sink, twin burner cooktop, large refrigerator, and convection microwave oven. There's access to storage beneath settees and behind bulkheads.

In the master stateroom is a double island berth on centerline with easily accessed dry storage areas below. Two rod lockers forward conceal as many as 10 offshore rods with reels.

A spacious head with separate stall shower is aft to starboard. Two additional single berths are located portside in the guest cabin.

The cockpit is 130' with 2 large; insulated fish boxes and a 50 gal bait tank located in the transom to save cockpit space.

A tournament style flybridge features electronic controls, easy to read engine instrumentation, large console for electronics, helm and companion seats plus a forward bench seat with storage below.

## Salon

• Recessed Halogen Lighting • To port a smaller seating area • Rod Storage behind settee • Tinted Glass • Built in entertainment center with Zenith flat panel Television • Custom Panasonic CD-DVR stereo Option • Bose CD/DVD/TV with Bose Speakers • Designer Interior • Teak Dining table with large U-shaped settee • Custom mini blinds • L shaped Settee • U-shaped Dinette • Teak and Holly sole • AC

## Master Stateroom - forward

• Double bed, Island style sheet set & coverlet • Foredeck hatch with retractable shade • Hanging locker, cedar lined, port side • LCD TV 110V built in with cable hook up • Sony Speakers with Volume Control

## Guest Stateroom - port side:

• Twin Berths • 110V Duplex outlet/GFI Protected • Recessed halogen lighting

## Head:

110V duplex outlet/GFI protected Opening Port Adjustable AC/Heat vent Chromed Faucet White Corian sink Corian Countertop Skylight Vanity with storage cabinet Separate shower stall Exhaust blower Recessed halogen lighting Sealand Vacuflush Electric Head Holding tank monitor system

## Galley

• Panasonic Dimension 4 Microwave/Convection Oven • Refrigerator with Top Freezer, AC/DC • Under Cabinet Recessed Lighting • Corian Sink • Drawers and Storage Throughout • Kenyon Ceran (2) Burner Stove Top

## Electronics & Navigation

Furuno NavNet system with a 10" display GPS/Chartplotter, Depth Sounder and 48NM Open Array Radar Simrad AP11 Autopilot Northstar 6000i GPS/Chartplotter with 12' Display redundant backup ICOM M620 VHF Radio PolyPlanar MRD 60 Marine Stereo System with XM Radio Receiver SONY Marine Grade Speakers McMurdo Precision 406MHz GPS EPIRB ICOM Command Mic VHF in Salon

## Cockpit

- Rocket Launcher
- Bait tank, 40-gallons, molded into transom
- Gunwale padding, high-density foam, white vinyl covered
- Courtesy lighting under gunwales and helm deck overhang
- Fish boxes (2), large, insulated, macerator pump-out system (Refrigerator plate in port box)
- Rod-gaff racks, port and starboard

- Rod holders
- Tackle center, units both port and starboard, fiberglass with polyplastic drawers, lockable molded fiberglass cover
- Transom door with gate
- Washdowns, fresh-and saltwater

### **Flybridge:**

- Bench seat, forward of console, cushions and storage
- Bridge ladder and safety rails from cockpit to flybridge
- Compass, with light, flush-mounted
- Electronics console, custom-molded
- Fire and bilge water level alarms, audible
- Helm and companion Pomanette chairs
- Helm wheel, stainless steel
- Rocket launchers, bridge rail, (5)
- Safety cabinet, first aid kit, fire extinguisher
- Storage, lockers, forward
- Storage, cabinet at helm

### **Deck & Hull**

• Fresh and Saltwater washdown • Armstrong dive ladder • Pompanette H2RC white FBG helm chairs • Strataglass enclosure w 3 U-zip openings • Fiberglass step box Deep Sea Underwater Lights • Cockpit fly cover with zip opening for bridge ladder access • Canvas dockside awning using stainless poles that slide into rod holders • Recessed trim tabs • 7.6 Kw Westerbeke generator in sound shield • Newmar Phase Three 70amp battery charger • Glacier Marine refrigeration unit for fishbox has digital thermostat on electrical panel • 2 x 30amp shore power cords • 110v AC, 12/24V DC • 3 auto/manual bilge pumps • Cable TV and telephone inlet plugs • GFI protected 110v outlets • Seaward 11 gal. stainless hot water heater

### **Engines**

• 1000 hour scheduled maintenance - completed • ZF 1.483:1 transmissions • CAT electric controls with synchronizer & backup system • Racor primary fuel filters with pressure gauges • Electric fuel gauge at helm • FireBoy engineroom system with status/remote alarm panel at helm • Oil Xchanger system • Y-valve emergency crash bilge pump • Engine ventilation blowers • Cruisair reverse-cycle air-conditioning with digital thermostat • Inboard raw water sea strainers • Teleflex hydraulic steering • Trim tabs • Bilge pumps, three automatic/manual and one automatic • Bilge, white gel-coated finish • Bonding system with transom zinc plate • Bronze intake scoops with integral sea water strainers • Double stainless steel clamps on engine exhaust hoses • Double stainless steel hose clamps on all hose fittings • Engine alarm system • Engine room blowers • Fiberglass fuel tank, fire-retardant vinylester resin • High water bilge alarms (3) • Holding tank, 11 gallon with warning lights, macerator and dockside discharge • Propellers, 4 blade Nibral • Propeller shafts, dual taper, high strength stainless steel, 1.75 inch



diameter,couplers • Rudders, high strength bronze • Sea cocks, UL approved for marine application, bronze, fitted on all thru-hulls below water line • Stuffing boxes, dripless lip seal type • Water heater, stainless steel, 11 gallon, AC • All Engine Space sound insulation has been replaced with fresh material removing original product. (August 2014)

## Exclusions

All personal gear, tackle, fishing equipment, supplies and linen are excluded from the sale.

## Исключения

---

При продаже яхты исключаются личные вещи владельца.

## Отказ от ответственности

---

Компания предоставляет описание судна или яхты добросовестно, но не может гарантировать точность этой информации, а также не ручается за техническое состояние. Покупатель должен проинструктировать своих агентов или оценщиков исследовать представленную информацию более подробно, по собственному желанию. Продажа судна или яхты, изменение цены или снятие с продажи будет происходить без предварительного уведомления.

# ФОТОГРАФИИ

**Bow Profile**



**Starboard Profile**



**Bow Profile**



**Stern**



**Stern**



**Bow Profile**



**Port Profile**



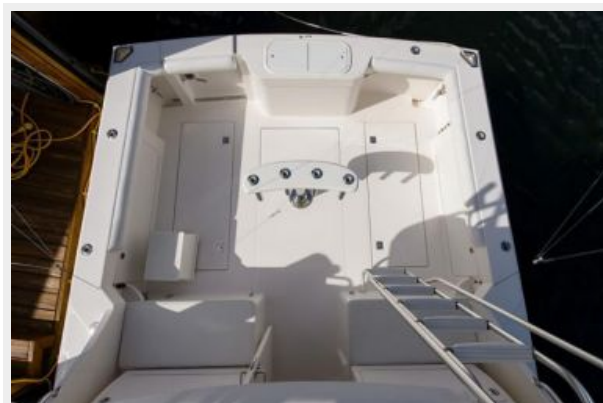
**Port Profile**



**Stern**



**Cockpit**



**Cockpit**



**Cockpit**



**Cockpit**



**Cockpit**



**Cockpit**



**Flybridge**



**Flybridge Helm**



**Flybridge**



**Flybridge**



**Flybridge**



**Flybridge**



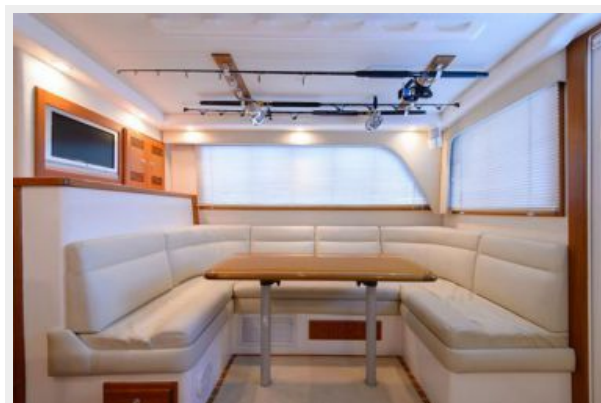
**Galley**



**Galley**



**Salon**



**Salon**



**Salon**



**Master Stateroom**



**Master Stateroom**



**Head**

**Master Stateroom**



### Head



### Guest Stateroom



### Engines



### Engines





## Engines



## Engines



# КОНТАКТЫ

---

Андрей Шестаков (Andrey Shestakov) – ведущий яхтенный брокер отдела продаж яхт и судов компании Shestakov Yacht Sales Inc. Официальный представитель Shestakov Yacht Sales Inc. для русскоговорящих клиентов в центральном офисе компании в Майами/Форт Лодердейл/Флорида/США.

## Контактная информация

---

Email: [andrey@shestakovyachtsales.com](mailto:andrey@shestakovyachtsales.com)

Web: [shestakovyachtsales.com](http://shestakovyachtsales.com)

## Телефоны

---

Краснодарский край: **+7(918)465-66-44**

США, Майами, Флорида: **+1(954)274-4435**

## Время работы

---

Понедельник – Суббота: **9:00 - 21:00**  
EDT

Воскресенье: **Закрито**

## Адрес

---



Harbour Towne Marina, 850 NE 3rd St,  
STE 213, Dania, FL 33004