

TRADE 68 — VIKING



Builder: VIKING

Year Built: 2006

Model: Sport Fisherman

Price: PRICE ON APPLICATION

Location: United States

LOA: 68' 0" (20.73m)

Beam: 19' 3" (5.87m)

Min Draft: 5' 3" (1.60m)

Max Draft: 5' 5" (1.65m)

Cruise Speed: 30 Kts. (35 MPH)

Max Speed: 35 Kts. (40 MPH)

Our experienced yacht broker, Andrey Shestakov, will help you choose and buy a yacht that best suits your needs **Trade 68 — VIKING** from our catalogue. Presently, at Shestakov Yacht Sales Inc., we have a wide variety of yachts available on our sale's list. We also work in close contact with all the big yacht manufacturers from all over the world.

If you would like to buy a yacht **Trade 68 — VIKING** or would like help answering any questions concerning purchasing, selling or chartering a yacht, please call **+1(954)274-4435**

TABLE OF CONTENTS

TABLE OF CONTENTS	2
SPECIFICATIONS	5
Overview	5
Basic Information	5
Dimensions	5
Speed, Capacities and Weight	5
Accommodations	6
Hull and Deck Information	6
Engine Information	6
DETAILED INFORMATION	7
Vessel Walkthrough	7
Salon	8
Galley	8
Dining	9
Companionway	9
Master Stateroom	9
Master Head	10
Forward Guest Stateroom	10
Starboard Guest Stateroom	10
Starboard Head	11
Crew Head	11
Crew Quarters	11
Fly Bridge	11
Electronics	12
Cockpit	13
Deck Equipment	14
Hull	14
Electrical Equipment	14

Engine Room	15
Exclusions	16
Disclaimer	16
PHOTOS	17
Salon	17
Salon	17
Galley	17
Galley	17
Galley	17
Dinette	17
Companionway	18
Master Stateroom	18
Master Head	18
Master Stateroom	18
Master Head	19
Master Head	19
VIP Stateroom	19
VIP Stateroom	19
VIP Head	20
VIP Head	20
VIP Head	20
Starboard Guest Stateroom	20
Starboard Guest Stateroom	21
Starboard Guest Stateroom	21
Guest Head	21
Guest Head	21
Guest Head	22
Guest Head	22
Guest Stateroom	22

Guest Stateroom	22
Guest Stateroom	23
Guest Stateroom	23
Guest Head	23
Guest Head	23
Guest Head	24
Laundry	24
Laundry	24
Helm	24
Flybridge Seating	25
Helm	25
Flybridge Seating	25
Helm	25
Tower	26
Tower Controls	26
Tower View	26
Cockpit	26
Cockpit	27
Engine Room	27
Engine Room	27
Engine Room	27
Trade 68	27
Engine Room	27
CONTACTS	28
Contact details	28
Telephones	28
Office hours	28
Address	28

SPECIFICATIONS

Overview

This is one of the nicest 68s on the market. Must see every option, this is a CUSTOM Viking. **Owner will Consider Trades.** The accommodations below carry the most practical and spacious of 4-stateroom, 4-head layouts offered today in a tournament series convertible. Stunning teak archways and accents throughout, along with custom accessories in the staterooms, flybridge and more make this vessel a must-see. **Engines extended warranties until February 2016 or 500 hours.**

Basic Information

Category: Sport Fisherman	Model Year: 2006
Year Built: 2006	Country: United States
Vessel Top: Open W/Tower	Fly Bridge: Yes
Cockpit: Yes	

Dimensions

LOA: 68' 0" (20.73m)	Beam: 19' 3" (5.87m)
Min Draft: 5' 3" (1.60m)	Max Draft: 5' 5" (1.65m)

Speed, Capacities and Weight

Cruise Speed: 30 Kts. (35 MPH)	Cruise Speed RPM: 2000 Kts.
Max Speed: 35 Kts. (40 MPH)	Max Speed RPM: 2300 Kts.
Water Capacity: 355 Gallons	Holding Tank: 113 Gallons
Fuel Capacity: 2315 Gallons	

Accommodations

Total Cabins: 3

Total Berths: 4

Sleeps: 6

Total Heads: 2

Crew Cabin: 1

Crew Berths: 2

Crew Sleeps: 2

Crew Heads: 4

Hull and Deck Information

Hull Material: Fiberglass

Engine Information

Engines: 2

Manufacturer: Caterpillar

Model: C32A

Engine Type: Inboard

Fuel Type: Diesel

DETAILED INFORMATION

Vessel Walkthrough

The accommodations below carry the most practical and spacious of 4-stateroom, 4 head layouts offered today in a tournament series convertible. As you enter each stateroom or walk-in closet take notice of the curved Teak-framed archways of the doorways to each room and/or closet. The first stateroom you will come to down the companionway is the crew quarters, which is aft and down two steps to port with large bunks, a full shower stall and head arrangement this crew is as generous as they come. Also included is the convenient engine room access to the crew quarters, which is a must. A nice sized upper and lower berth guest stateroom lies off the companionway to starboard with shared guest head and shower. All heads of this vessel are outfitted with granite countertops, upgraded hardware, mirrored ceilings and custom Amtico flooring. The master is mid-ship with an athwartship king size bed. Two walk-in his and her closets lie along the aft bulkhead. There is a custom teak headboard to the master berth. A 32" flat screen TV trimmed in Teak is flush mounted into the adjacent wall.

The forward stateroom serves as a second master with a queen berth forward, beautiful Teak upper cabinets lining the V-berth and large hanging locker. There is also a private head and shower adjoining this stateroom.

Viking once again outshined the competition with their introduction of the center lined walk-around helm console on the flybridge in the 74' Viking. This configuration offers symmetrical seating on both port & starboard sides of the flybridge. It was so well responded with its functional maneuverability around the bridge, clean look and tremendous seating accommodation that it was incorporated into the design of the 68'. Aside from two long bench seats, with aft-facing jump seats and backrests, the layout provides a large refrigerator and freezer storage forward of the helm. There is also a fiberglass drink cooler forward to starboard with a fresh water outlet below. Ample rod storage lies below the port and starboard flybridge bench seats. At the helm there is a convenient electric drop down instrumentation box overhead and a custom arrangement of two forward-facing Bluewater helm chairs.

Upgrades include:

- Speaker control to cockpit including Sirius Satellite radio and weather
- Crew access door in engine room
- State-of-the-art electronics
- Bluewater fighting chair with Rocket launcher
- Eskimo ice machine
- EZ2CY enclosure/custom 3 sided (2013)
- Custom Teak deck and mezzanine
- Custom dinette
- Premier edition decor
- Custom hull color - yellow

- Tower

Salon

- Upgraded sofa with Ultraleather extra plush hinged cushions with pleated back
- Bar stools with Teak base and fabric cushion
- U-line wine cooler; clear type concealed in Teak cabinetry behind door
- Full canvas carpet runner
- Overhead lights with dimmer switches
- 42" Sony pop-up Fujitsu TV
- Teak valances
- Larger, wider forward end of entertainment center
- Baby Ostrich headliner, natural color, 1/8" foam and tricot backing with teak strips
- Teak cabinetry with drawers and bottle storage
- Crescent shaped lounge with rod storage underneath
- Amtico finish flooring at salon entrance with Teak trim/Galley
- Upgraded entertainment system
- Teak lambrequins with Teak frame
- Hunter Douglas silhouette blinds
- Main electrical service panel, AC/DC, backlit and raised to eye level for easier viewing
- Sliding electric salon door
- Stereo speakers, multi-directional, Bose system mid/high range with powered subwoofer for bass and with volume control/Nevo controls throughout/custom speaker locations
- Sculptured carpeting
- Custom ottoman with storage
- 3 Custom shelves by door

Galley

- Amtico Teak flooring
- Granite countertops with custom edging and overhang for stools
- (3) Bar stools with Teak base
- Baby ostrich skin headliner Microwave/convection oven
- Sub-Zero large capacity deep-drawer undercounter refrigerator and freezer with varnished Teak faces, (2) refrigerator units and (1) freezer unit
- Storage cabinets and drawers in lower galley, varnished Teak doors and faces with stowage for utensils and other items
- Custom tile/stone above granite top
- Teak dinette table with Teak pedestal and Teak base
- Custom radius on galley countertop
- Storage cabinets in upper galley, varnished Teak doors with Teak faced deep, pullout drawers with aircraft style slides for smooth movement and latches to keep drawers in place

while underway

- Custom spice cabinet
- 4-Burner cook top

Dining

- Dinette settee with removable black cushions and storage room underneath; black
- Teak dinette table with satin finish with single Teak pedestal and ring, thru-bolted
- Hunter Douglas silhouette blinds
- Overhead Halogen lights with dimmer
- (2) Storage cabinets with drawers & shelves

Companionway

- Teak strips between panels
- Central vacuum unit connection with accessories
- Laundry center with stackable washer and dryer behind Teak door
- Access to pantry forward of galley with computer, printer and phone
- Awlgrip bilge areas with access hatches, snow white and lighted (on magnetic latch) for easier maintenance and cleaning
- Ostrich headliner, natural color, 1/8" foam and tricot backing
- Electronics tower in pantry
- (2) Electrical panels in storage area

Master Stateroom

- Custom bedspreads and pillows; headboard
- Nightstands with Teak tops at forward and aft ends of bed
- (2) lamps, (2) draws each side
- Queen-size bed with upgraded mattress to System III Innerspring
- Reading lights overhead with separate switches
- Stereo/CD/DVD player, BOSE speakers and subwoofer
- Twin maple-lined hanging closets with Teak doors built into aft bulkhead
- Drawer storage under bed; (2) large drawers
- Entry credenza with drawer storage
- Queen-size, walk-around athwartship bed with mattress and lift-up top with gas pistons and maple-lined storage underneath
- Telephone outlet
- Sharp 32" LCD flat screen TV framed in Teak and flush-mounted into wall
- (4) drawers starboard side
- Custom wallpaper

- Baby ostrich headliner

Master Head

- Headhunter head system with china bowl toilet
- Mirrored ceiling
- Vanity with Teak face on lower vanity
- Mirror above vanity
- Custom granite flooring
- Granite countertop, white sink with mirror framing
- Linen closet

Forward Guest Stateroom

- Queen-size walk-around bed with lift-up bed top on gas pistons and maple-lined storage underneath upper Teak cabinets forward, lining V-berth
- Ostrich skin wall cover
- Upgraded mattress and custom spreads and pillows
- Sony CD/DVD
- A/C and lighting controls
- Custom wallpaper
- Custom carpet with hatches cut and wrapped
- 15" Sharp LCD flat screen TV mounted in Teak panel
- Teak on forward bulkhead
- Large hanging locker, Teak with maple-lined storage
- Reading lights with separate switches
- Storage drawers under bed (2) large drawers
- VIP guest head
- Updated china bowl toilet
- Trim around mirrors
- Granite counter tops
- Mirrored heads
- Teak flooring
- Glass trim around cabinet

Starboard Guest Stateroom

- Maple-lined hanging locker
- Carpeting
- Reading lights recessed in headliner with separate switches
- Upper and lower berths with lift-up lower bunk top and maple-lined storage underneath

- Storage drawers located under hanging locker
- Flat screen 15" Sharp TV (2)
- Custom extended bed and head area
- Baby ostrich headliner
- Upgraded wallpaper

Starboard Head

- Teak face on lower vanity
- Granite vanity top
- Mirror backing in place of wallpaper around upper vanity with framing
- Custom Amtico flooring
- Baby ostrich headliner
- Upgraded china bowl toilet

Crew Head

- Mirror in place of wallpaper around upper vanity cabinet
- Gold Giche head fixtures
- Custom Amtico flooring
- Corian top
- Custom wallpaper to match engine room door
- Baby ostrich headliner

Crew Quarters

- Samsung flat screen TV
- Light dimmers
- A/C controls
- Hanging locker, maple-lined
- Storage cabinets recessed in port and forward walls with lift-up mirrored doors
- Orthopedic mattress upgrade for upper and lower berths
- Stereo speakers recessed in soffit tied into salon stereo with volume control
- Amtico flooring
- Baby ostrich headliner

Fly Bridge

- Release Teak helm pod
- Recessed electronics boxes

- Costa track-to-track on front and sides of enclosure
- Fresh water outlet in port forward cabinet with water hose reel
- Overhead lighting in hardtop, 3-way LAN system
- Custom release marine control handles with bow thruster buttons in handle
- Removable fly bridge jump seat backrests on both port and starboard
- Moritz safety monitoring system with audible and visible alarms
- Recessed electronics box in console for custom electronics package that is easily viewable and protected from the elements by an acrylic fitted lid with gasket and stainless steel gas pistons
- Starboard locker aft facing with storage inside
- (2) Trumpet-style air horns
- Very desirable and accommodating centerline walk-around helm
- Teaser reels Miya Epoch US9
- Flybridge installed without exposed fasteners
- Drip-dry extra plush foam cushions in place of standard; color: tan
- CAT trolling valves
- (2) helm chairs in line, all Bluewater
- Drilled and tapped electronics box lids for gas springs in place of standard thru-bolts
- 3-position switch for overhead lights in hardtop, buggy top and standing platform
- Cushion for seating on forward helm freezer
- Fuel gauge located in cabinet at console
- Power-assist steering with steering junction block under helm for future stations/autopilot
- Recessed radio boxes, larger radio box on port and starboard side of console with switch panel inside
- Refrigerated top-loading chill box at forward end of bridge for keeping drinks and snacks accessible from the bridge. Also has freezer capabilities on dual thermostat
- 42" triple spreader Ripp riggers
- Center rigger
- Bow thruster with pads on deck

Electronics

- (2) Furuno 15" screens in cockpit
- (1) Garmin 8215 touch screen (2013) AIS
- (1) Furuno bottom FCV-1200
- (1) Furuno radar; 96 mile, 25KW
- (1) Northstar 6001 - Sirius weather
- Furuno RD 30; speed and depth
- (3) Standard Horizon VHF with 3 external speakers
- (1) ICOM IC-M802 SB radio
- CAT trolling and activation
- (2) Cat guage panels
- SIMRAD AP26 auto pilot

- ACR spotlight
- NVT night vision
- Sirius-Clarion CD radio with 4 speakers
- (3) Cameras; 2 in engine room and 1 in cockpit

Tower

- RAM microphone for VHF
- SIMRAD N/SE 8' multifunction
- Screen for bottom
- RD-30 Firuno

Cockpit

- Mezzanine cockpit – new Sunbrella cushions 2013
- Eskimo ice machine plumbed to in-deck well
- Live well in cockpit sole
- Y-valve for fresh and saltwater wash downs
- Storage lockers port and starboard below gunwales
- Cable TV and telephone connections located in cabinet under starboard forward gunwale and wired to a home run
- Cabinets with storage for gaffs and/or other accessories under port and starboard gunwale with split doors
- Electric sliding salon door, molded fiberglass with frameless window and Teak interior
- (6) Rod holders
- Cockpit cover
- Tee in dockside water manifold to fill water tank from cockpit
- Oil exchange system plumbed to dockside insert for easy change
- Deleted handrails from cockpit wing haunches for cleaner look
- Cockpit speakers controlled by flybridge stereo with remote
- Awl-gripped lazarette
- Dockside electric connection – (2) 50 amp/220V electric retractable Glendenning cable masters in port and starboard cabinets under gunwales
- Dockside water connection with pressure reducing valve in port or starboard cabinet under gunwale
- Indirect rope lighting underneath the coaming – green and white
- Custom Teak cockpit deck and mezzanine
- 110V air compressor with 50ft. hose
- Electric barbecue grill
- Teak steps on ladder to bridge

Deck Equipment

- Black mask redone early 2013
- Freshwater wash down at bow inside anchor locker
- Recessed trim tab covers
- Polished stainless steel toe rail at bow
- Brushed aluminum tower
- No bow rail or pulpit
- Fresh water spigot in top of tower
- Windlass – removable anchor chute

Hull

- DC bow thruster
- Custom non-metallic boot strip – green with gold
- Additional fuel tank forward for a total of 3 tanks/total 2300 gallons
- Custom hull color fighting lady yellow
- (6) Underwater lights (4) outback-white (2) bottom-white
- Molded fiberglass in thru hulls
- Fiberglass tank vents in place of metal
- Underwater exhaust system
- (6) Quartz halogen lights; (1) port; (1) starboard; (1) forward; (3) back

Electrical Equipment

- (2) Charles autophase C-power shore power transformer
- 110V outlet in engine room on aft bulkhead
- Anchor light/navigation lights
- Batteries, (3) independent 24V banks mounted in fiberglass storage boxes, maintenance-free
- (3) Battery chargers with thermal cutoff and switching system for complete integration
- Battery distribution panel with battery cutoff and charging system breakers
- Glendinning cabledmaster (2) with 3 wire grounded cord
- Phone cable is CAT-5 to accommodate current data phone systems
- Receptacles, 120V duplex with GFI throughout
- Sub-panel in forward utility room with water tank gauge, alarm and monitoring system
- Generators, diesel, (2) Onan 27.5 KW and KW EQD (electronic quiet diesel) series, user-friendly with electronic governing allowing voltage and electronic frequency control (3150 port – 3150 starboard) January 15, 2015
- 24V DC ship's service throughout
- Charles Power Master, shore power cord combiner, 100 amps
- 24/12V power supply with breakers on fly bridge for future electronics

- Battery parallel system for main engines and generator start
- Bonded electrical system with ground plate
- Color-coded, labeled and numbered wiring system with corresponding drawings
- 24/12V power supply both sides of cockpit

Engine Room

- Fuel transfer system, 24V DC pump
- Fuel/water separator filters for main engines and generator, “dual” filters for main engines. Glass bowl-type, top-loading for convenient replacing-painted snow white awlgrip.
- Structural steel engine beds mounted to transverse intermediate bulkheads to isolate torque and vibration/engine noise and ensure drive-train alignment
- Exhaust surge tubes have been awl-gripped before installation
- ENGINES CAT C32A, 4430 TOTAL HOURS (2,000 HOURS SINCE MAJOR OVERHAUL)
- **Engines extended warranties until February 2016**
- Head Hunter head system upgrade
- All pumps in engine room area painted snow white for cleaner look
- Air conditioning, direct expansion zoned with reverse cycle heat for complete climate-control throughout the interior and with individual temperature controls for staterooms and salon
- Delta T engine room ventilation system with supply and discharge fans for proper fresh air supply and water intrusion suppression
- Dual stage 110V A/C freshwater pump with cockpit dock supply inlet with pressure reducing valve-24V AC pump
- Engine room entrance package consisting of gauges for digital tachometer, engine water temperature, engine oil pressure and engine room-mounted engine start and stop switches for easier viewing and accessibility
- All pumps in engine room are painted snow white for cleaner look
- Fire suppression system, automatically or manually operated and tied into main engine and generator ignition systems with override
- Fuel and oil lines, flexible, steel reinforced USCG approved, aircraft type
- Hour meters on main engines and generator, air conditioning and all other sea water pickups
- Nibral propellers, Veem props
- Shafts – 2 Aquamet high-strength stainless steel, double taper with machined keyway and custom thrust plate at main engine couplings
- Water heater, 30 gallons, dual element, quick recovery, electric
- Bilge pumps with additional clean out pumps in keel area linked into monitoring system and connected to float switches for automatic and manual operation
- Fresh water supply in engine room for general maintenance and cleaning
- Fresh water manifold isolation system
- Fuel priming pumps for main engines, electric
- Power steering pump

- Headhunter fresh water pump
- Access door to crews quarters
- (2) 4-drawer tool box painted white
- Gas-water separators for both generators

Exclusions

Owner's personal belongings.

Disclaimer

The Company offers the details of this vessel or yacht in good faith but cannot guarantee or warrant the accuracy of this information nor warrant the condition of the vessel. A buyer should instruct his representatives, agents, or his surveyors, to investigate such details as the buyer desires validated. This vessel or yacht is offered subject to prior sale, price change, or withdrawal without notice.

PHOTOS

Salon



Salon



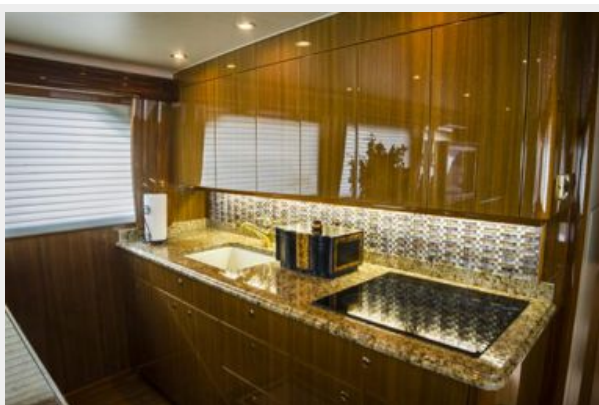
Galley



Galley



Galley



Dinette



Companionway



Master Stateroom



Master Stateroom



Master Head



Master Head



Master Head



VIP Stateroom



VIP Stateroom



VIP Head



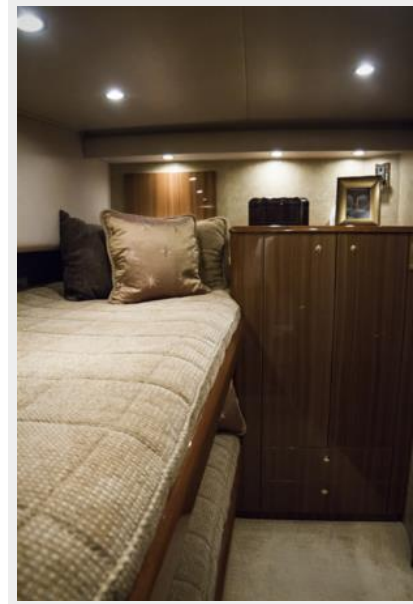
VIP Head



VIP Head



Starboard Guest Stateroom



Starboard Guest Stateroom

Starboard Guest Stateroom



Guest Head

Guest Head



Guest Head



Guest Head



Guest Stateroom



Guest Stateroom



Guest Stateroom



Guest Stateroom



Guest Head



Guest Head



Guest Head



Laundry



Laundry



Helm



Flybridge Seating



Helm



Flybridge Seating



Helm



Tower



Tower Controls



Tower View



Cockpit



Cockpit



Engine Room



Engine Room



Engine Room



Engine Room



Trade 68



CONTACTS

Andrey Shestakov, leading yacht broker of the sales department of Shestakov Yacht Sales Inc. Shestakov Yacht Sales Inc., the official representative of the Miami/Fort Lauderdale FL headquarters.

Contact details

Email: andrey@shestakovyachtsales.com

Web: shestakovyachtsales.com/en/

Telephones

USA: +1(954)274-4435

Office hours

Monday – Saturday: **9:00 - 21:00** EDT

Sunday: **closed**

Address



Harbour Towne Marina, 850 NE 3rd St,
STE 213, Dania, FL 33004