

GIGI — WESTPORT



Судостроитель: WESTPORT

Год постройки: 1999

Модель: Мега-яхта

Цена: **ЦЕНА ЯХТЫ ПО ЗАПРОСУ**

Местонахождение: United States

Длина общая: 112' 0" (34.14m)

Ширина: 23' 9" (7.24m)

Макс. осадка: 5' 6" (1.68m)

Крейс. скорость: 19 Kts. (22 MPH)

Макс. скорость: 24 Kts. (28 MPH)

Купить **GIGI — WESTPORT** а также выбрать подходящую вам яхту из нашего каталога яхт вам поможет опытный яхтенный брокер Андрей Шестаков. На сегодняшний день компания **Shestakov Yacht Sales Inc.** имеет большое количество яхт в собственном списке продаж, а также тесно сотрудничает со всеми крупными яхтенными производителями по всему миру.

Для того чтобы купить яхту **GIGI — WESTPORT** а также проконсультироваться по любому вопросу связанному с покупкой, продажей, чартером яхт позвоните по телефону **+7(918)465-66-44**.

ОГЛАВЛЕНИЕ

ОГЛАВЛЕНИЕ	2
ХАРАКТЕРИСТИКИ	5
Обзор	5
Основная информация	5
Размеры	6
Скорость, вместимость и масса	6
Размещение	6
Корпус и палуба	6
Информация о двигателе	6
ПОДРОБНОЕ ОПИСАНИЕ	7
2014/2015/2016 Upgrades	7
Overview	8
Salon	9
Galley	9
Laundry Room	10
Pilothouse	10
Master Stateroom	10
Master Head	11
VIP Stateroom	11
Forward Guest Head	11
Guest Stateroom-Port	11
Port Head	12
Guest Stateroom-Starboard	12
Starboard Head	12
Crew Quarters-Aft	12
Captain's Quarters	12
Flybridge	13
Deck	13

Aft Deck	14
Fore Deck	14
Electronics & Navigation	15
Hull	15
Electrical System	15
Engine Room	16
Exclusions	17
Performance Data	17
Исключения	17
Отказ от ответственности	18
ФОТОГРАФИИ	19
Salon	19
Salon	19
Dining Area	19
Galley	19
Bar Detail	19
Country Kitchen	20
Master Stateroom	20
Master Stateroom 42" TV	20
Master Stateroom	20
Master Bath	21
Master Head	21
Guest Stateroom	21
VIP Stateroom	21
Head	21
VIP Head	21
Head	22
Guest Stateroom	22
Crew Quarters	22

Crew Quarters	22
Crew Quarters	22
Crew Quarters	22
Crew Head	23
Crew	23
Foyer	23
Lazarette	23
Flybridge	25
Flybridge Helm	25
Flybridge	25
Foredeck	25
Engine Room	26
Engine Room	26
Windlass	26
Engine Room	26
КОНТАКТЫ	28
Контактная информация	28
Телефоны	28
Время работы	28
Адрес	28

ХАРАКТЕРИСТИКИ

Обзор

This 1999 112' Westport is well-equipped to provide guests with the ultimate in cruising luxury on the industry's most successful composite hull over 100'. The 112' offers acclaimed performance and low maintenance costs with incredible cruising range at displacement speeds, or serious speed at a top end of 24 knots. The seakeeping ability and livability of Westport, the 112' in particular, are unmatched by any other builder in this class. With accommodations for up to eight guests in four staterooms, plus four crew in the crew quarters, this yacht was designed to travel and her numerous updates and custom features provide refreshed styling and serious luxury.

This 112' offers a spacious salon with walk-behind step-down bar to port, and formal dining in the forward section of the salon. There are custom buffet cabinets for storage of formal dinnerware and a 50-bottle wine cooler. From the salon to the aft deck you enter through the large, stainless steel, counter balanced double doors. U-shaped aft deck seating and occasional chairs face aft for ultimate viewing at anchorage or at the marina. Going forward and to starboard is the large country kitchen, with comfortable seating at the raised, U-shaped dinette for casual dining with friends and family. Two bar stools can be placed as needed when entertaining guests in the galley and can provide additional seating at the dinette for larger parties. The galley includes a pull-out pantry and offers a full array of new top-end appliances, making meal preparation a breeze. The area has an open concept feeling, enhanced by the granite countertops that have been carried from salon throughout the main deck to the galley, dinette, and forward countertops. The cabinets and other doors are solid wood done in long end grain effect, a butcher block type of joinery that provides an elegant touch compared to the typical usage of hollow doors with veneer skins seen on some of the competition.

The spacious full beam master is located midship, and is entered through solid wood double doors off of a foyer shared by the port and starboard aft guest staterooms. The VIP stateroom is forward off of the main deck, affording VIP guests privacy while retaining easy access to the salon, galley, and pilothouse. Each stateroom is equipped with its own head, while a day head in the salon is conveniently located for use when guests are enjoying the many amenities this yacht has on offer.

Основная информация

Тип судна: Мега-яхта

Модельный год: 1999

Год постройки: 1999

Страна: United States

Размеры

Длина общая: 112' 0" (34.14m)

Ширина: 23' 9" (7.24m)

Макс. осадка: 5' 6" (1.68m)

Скорость, вместимость и масса

Крейс. скорость: 19 Kts. (22 MPH)

Макс. скорость: 24 Kts. (28 MPH)

Вместимость воды: 1075 Gallons

Вместимость сточного бака: 475 Gallons

Объем топливного бака: 5500 Gallons

Размещение

Всего кают: 4

Спальные места: 8

Всего ком. состава: 5

Каюта капитана: Да

Койки экипажа: 4

Комм. состав экипажа: 2

Корпус и палуба

Материал корпуса: Fiberglass

Отделка корпуса: Aluminum

Информация о двигателе

Двигатели: 2

Производитель: MTU

Модель: 16V2000

Тип двигателя: Inboard

Тип топлива: Diesel

ПОДРОБНОЕ ОПИСАНИЕ

2014/2015/2016 Upgrades

- Main engine mounts **New**
- Main engine transmission couplings **New**
- Engine room intake fan and frequency drive **New**
- Engine room exhaust fan and frequency drive **New**
- Black water discharge pump (120 vac) rebuilt and all new hoses
- Shore power breaker for starboard cord enclosure and 3 phase breaker **New**
- New bottom paint and prop speed
- Exterior window frames and mask painted
- Painted transom
- Flybridge non-skid painted
- Boat deck non-skid painted
- Stabilizer control heads sanded to bare metal and repainted
- Handrail bow removed and re-bedded
- Rudder bearings **New**
- Dishwasher Fisher-Paykel **New**
- Refrigerator SubZero in Crew mess **New**
- New carpet throughout vessel
- Pilothouse console Black fabric **New**
- Pilothouse console Brown Fabric **New**
- Re-upholstered sofa in salon, all dining chairs and love seat in master stateroom
- TV 65" in master stateroom **New**
- TV 21" in Crew Mess **New**
- TV 32" in Captains **New**
- Captains Cabin bed to queen with custom mattress
- Annual inspection and re-certification of fire equipment
- Chiller system AquaAir
 - AquaAir Chillers 5 ton 3 units **New**
 - AquaAir control panel **New**
 - Pump chilled water **New**
 - Drip pan under chillers **New**
 - Drip pan under chilled water pump **New**
 - Air Handlers Marine Air 3 **New**
 - Air Handlers for Salon insulation **New**

- Fuel Reel 100' refueling hose for diesel tow behind
- Watermaker membranes (4) **New**
- SpotZero membranes (2) **New**
- Lighting Engine Room florescent **New**
- Lighting overhead through out converted to LED
- Upgrades and repairs to the exhaust system
- SART **New**
- AIS B Furuno FA-50 **New**
- Radar Garmin Array-rebuilt all new parts
- Radar Furuno 8255 with ARPA **New**
- Thruster control switches **New**
- Jog control switches **New**
- Heading Compass Simrad **New**
- Radios VHF (2) Icom 506 **New**

-Flybridge

-Pilothouse

-Command Mic extension of flybridge into Pilothouse

Overview

This 1999 112' Westport underwent an extensive interior and exterior refit in 2013 and saw further upgrades at the end of 2014 by Roscioli Yachting Center.

The beautiful lines of this timeless yacht were upgraded when a hardtop was added to the flybridge, providing a more comfortable open-air experience when cruising between ports. Four new helm chairs were added to allow guests to experience piloting a 112' yacht alongside the captain. Brand new EZ2CY glass curtains were installed on both the flybridge and aft deck to provide additional protection from the elements. Designed with entertaining in mind, a new bar with bottle storage and countertops were installed on the flybridge, and the hot tub was replaced to provide guests with the ultimate in relaxation. A custom table was added on the flybridge, and all exterior decks throughout were either repainted or teak was added. The mask and all window frames were repainted to restore the sleek look, and the transom was repainted as well. To improve performance the entire bottom was cleaned and repainted with Interlux Micron CSC, and all running gear including the props, shafts, bow thruster blades, motor, and swim platform ladder were coated with Prop Speed. While she was hauled out this yacht received all new zincs, and a new stainless steel anchor rounds out the exterior updates.

Moving to the comfortably elegant interior this yacht saw numerous updates to preserve her classic styling while providing guests with the latest and greatest in comfort and entertainment. The entire interior received new carpeting, and the salon sofa, dining chairs, and love seat in the master were all reupholstered. The expansive full beam master stateroom received a new 42"

television, and new soft goods have been added throughout. During the major refit in 2013 she received new electronics, new TV's, and new DVD players throughout, and all new appliances were installed. The interior wood was re-stained, and all of the wall coverings were replaced, including new valences throughout the galley and salon. The interior countertops were replaced with granite, and the flooring in the entryway and galley was replaced with Amtico. A new, custom built chandelier was installed in the salon along with new sconce lighting to accent new salon and dining tables as well as custom etched glass. All windows at the helm were tinted with V-Kool window film to reduce UV penetration and heat in the pilothouse.

Mechanically this yacht received new generators in 2009 and has had all air handlers replaced. The SpotZero system was serviced at the end of 2014. An Intellion 8 Sat-TV Dish was installed. The yacht underwent a vibration analysis survey and received new engine mounts and a shaft alignment by Datum RMS at the end of 2014.

Salon

The salon, which is entered aft through the stainless steel framed sliding door, includes a 55" Samsung TV, custom built-in sofa, buffet cabinets with granite tops, entertainment center with lift elevator for television, wine chiller, and audio/video storage with built-in storage. Custom etched glass is found behind dining table.

Majilite headliner, powder room with Royal Flush head, mirrored overhead, vanity light, granite top with china sink and ceiling light fixture. Crema Marfil marble tile flooring and wainscoting. Storage case for china, stemware and silver. Vaulted overhead ceiling fixture over the formal dining area. Duette blinds with custom blind pocket, Vertiglide blinds in aft salon. The full salon bar includes a sunken floor, built-in ice maker, storage, work counter and granite top, rope lighting under counter edge, and base upholstered bar front.

Galley

The galley is desirable country-kitchen style with a raised large dinette that seats 8-10 comfortably with panoramic viewing through the large windows. The galley, situated next to the dinette, offers a casual feeling and sometimes exhibition style food preparation, excellent layout for informal dining, mirror between forward cabinets; recessed ceiling over galley work area; built-in settee; upper and lower pull out pantry.

- Granite countertops
- GE Induction cooktop-5 burner
- Fisher & Paykel drawer dishwasher
- Sub-Zero refrigerator/freezer side by side stainless steel
- GE 30" convection oven
- GE microwave oven with vent hood
- Insinkerator garbage disposal

- Stainless steel Kohler extra deep sink
- Stainless steel faucet
- Soap dispenser
- 46" Samsung flat screen TV
- Amtico flooring

Laundry Room

- Located port aft
- (2) Frigidaire washers
- (2) Frigidaire dryers
- Chest freezer
- Door to the companionway

Pilothouse

- 24" Stainless steel destroyer type wheel
- Electronic engine controls
- Detroit Diesel DDEC engine instrument panel
- Stain-resistant carpeting
- Majilite bulkheads
- Majilite headliner
- Black Spinney leather control panel with padded panels
- Chart drawers under settee
- Leather on settee
- Pompanette helm chair
- Sliding hatch to flybridge
- Formica counters with ash trim
- Glass top table with ash trim
- Mirror on aft bulkhead
- Built-in bookcase
- HVAC with custom diffuser on aft bulkhead

Master Stateroom

The large, full-beam master stateroom is amidships. Enter through solid wood double doors to a king berth with inner-spring mattress and mirrored headboard and overhead treatment. Full dresser drawers to port and walk-in cedar-lined closet in starboard aft corner. Recessed lighting and 2-drawer storage underneath berth, recessed Halogen lighting and reading lights; indirect rope lighting, two sconce lights, mirrors on bulkhead above headboard and dressers, clear mirror on wardrobe door; lighted vanity make-up mirror. Walk-in wardrobe, aromatic cedar-lined with

automatic light' double entry way. Duette window treatments in custom blind pocket, opening portlights with screens and privacy covers, two nightstands with drawers, one 12-drawer dresser. The entertainment center with mirrored face, vanity, custom settee between cabinets on starboard side, 32" LG LCD TV with Yamaha Receiver and DVD Player.

Master Head

Two Headhunter Royal Flush heads, Crema Marfil marble tile shower with Grohe fixtures, tempered glass partition between tub and shower, Kohler Whirlpool tub with Kohler fixtures, two Kohler sinks with Grohe fixtures, four mirror medicine cabinet, mirrored headliner; recessed Halogen lighting, Crema Marfil marble flooring, Crema Marfil marble countertops.

VIP Stateroom

Queen berth with mirrored headboard, recessed lighting and four drawers; recessed Halogen room and reading lights, indirect rope accent lighting under berth and above soffit, mirrors on forward bulkhead above headboard, clear full length mirrors on wardrobe door; lighted vanity mirror above vanity/desk, walk-in wardrobe, aromatic cedar-line closet with automatic light, stainless closet rod and cedar shelf with keeper, 1 3/8" solid white ash doors, one opening port light in wardrobe closet, Froster Bomar hatch/skylight to foredeck with sliding screen and shade, joiner work, soffit for lighting. Two nightstands with built-in bookcase at headboard, vanity/desk, entertainment center with mirrored face and four drawer dresser below, custom upholstered settee, 26" LG LCD TV and Panasonic Blue Ray.

Forward Guest Head

Headhunter Royal Flush head, molded fiberglass shower with tempered glass door and Grohe fixtures and sealed shower light, Kohler stainless steel sinks with Grohe fixtures, wall mirror above vanity, recessed Halogen room lights, vanity lighting, Azrock commercial vinyl flooring with vinyl vase molding, Molded countertops, Ginger hardware, soap dish, recessed toilet paper holder, towel bar, toothbrush and tumbler holder.

Guest Stateroom-Port

Queen berth with inner-spring mattress, mirrored headboard, custom recessed lighting and 4-drawer storage underneath; recessed Halogen lighting and reading lights, mirror on aft bulkhead above headboard and above dresser, clear full-length mirror on wardrobe door, cedar-lined wardrobe closet with automatic light, Duette window treatments in custom blind pocket, opening port light with screen and privacy cover, soffit with ash trim for lighting, two 3-drawer nightstands, one 6-drawer dresser, entertainment center with mirrored face, 26" Samsung LCD TV and Panasonic Blue Ray.

Port Head

Headhunter Royal Flush toilet, custom molded fiberglass shower with tempered glass door, Kohler sink with Grohe fixtures, wall mirror above vanity, recessed Halogen lighting, Azrock commercial vinyl flooring, marble countertops and backsplash, Ginger hardware, one soap dish, recessed toilet paper holder, towel bar, toothbrush and tumbler, vanity and medicine cabinet.

Guest Stateroom-Starboard

Twin berths with inner spring mattresses and upholstered headboards and 2-drawer storage underneath, mirrors on aft bulkhead above headboard, clear full-length mirror on wardrobe closet that is cedar lined with automatic light. Duette window treatments installed in custom blind pockets, opening port lights with screen and privacy cover, one 3-drawer dresser, 3-drawer movable nightstands, entertainment center with mirrored face, Samsung 26" LG LCD TV and Panasonic Blue Ray.

Starboard Head

Headhunter Royal Flush toilet, custom molded fiberglass shower with tempered glass shower door and Grohe fixtures, Kohler sink with Grohe fixtures, wall mirror above vanity, recessed Halogen room lighting; Azrock commercial vinyl flooring, marble countertops with backsplash, Ginger hardware, one soap dish, recessed toilet paper holder, towel bar, toothbrush holder and tumbler, vanity and medicine cabinet.

Crew Quarters-Aft

Total of four berths for crew plus captain's berth. Full size berth in captain's cabin and two twin berths in crew area with inner spring mattresses and storage below, plus one twin berth starboard aft with doors to hallway and crew's head; Low voltage recessed room lights, clear full-length mirrors on wardrobe closets with automatic lights; white Corian countertops, captain's desk and new flooring. (2) Frigidaire Afinity Washers, and (2) Frigidaire Afinity Dryers. (2) GE Chest Freezers.

Captain's Quarters

22" Sharp Flat Screen TV and JVC stereo. Galley Maid toilet, custom molded fiberglass shower with tempered glass door; Stainless steel sink wall mirror above vanity; low voltage recessed room lights, vanity lighting, Azrock commercial vinyl flooring, white Corian countertops; Ginger hardware with all accessories, vanity and medicine cabinet.

Flybridge

- Custom non-skid decks
- Welded aluminum arch type mast with electronics, anchor light and deck lighting
- Wet bar with new countertops with hot/cold water
- TV/phone jacks
- GE refrigerator
- Five bars stools
- 24" stainless steel destroyer type wheel
- Compass
- CD player and transom ladder, chocks for life raft and tender (tender not included)
- Platinum Yacht Seating custom helm seats with footrests
- Khalenberg air horns
- New Jacuzzi with sun pad and storage below
- Molded settee with new cushions and hinged seating for storage below
- Stainless stern flag pole
- Two wing stations on flybridge include electronic engine controls with synchronizer
- Jog lever
- Bow thruster control
- Rudder angle indicator and covers
- Helm station with engine controls, engine instrumentation and electronics
- Clarion Marine AM/FM receiver with CD player
- Custom Venturi ¼" Lexan windshield in black aluminum frame
- Full fixed top which goes back to arch with 3 side EZ2CY enclosure
- Hi-Lo Table
- Stainless Steel Webber Grill
- 2,000 lbs Nautical structures -electrohydraulic davit

Deck

- Solid 2" PVC (upper/lower guard) w/stainless half oval rub strip
- One Bomar hatch with screen for forward guest stateroom
- One stainless sliding hatch to flybridge
- (1) Freeman cast aluminum round bow deck hatch to chain locker
- (1) Hatch from aft deck to flybridge
- Two cast chromed bronze Westport step plates located at side boarding doors
- Frameless adhesive bonded windows with 1/4" Solar Gray tempered glass, forward pilothouse windows are 3/8" tempered clear glass
- Stainless steel rails at transom stairs, both port and starboard, main house above salon windows, stern, flybridge and bow
- Non-skid on all exterior decks
- Forward sun lounge with cushions and covers
- Stainless steel anchor

- 350' 5/8" anchor chain
- 5/8" chrome chain stopper
- Custom stainless steel bow roller with VHMW roller
- 4500lb Maxwell hydraulic winch
- Automatic anchor chain wash down system
- Fiberglass cap rail with polyurethane finish
- Fiberglass bulwarks with polyurethane finish
- Bronze thru-hull fittings with bronze ball valves and bonding
- Freeman elliptical port lights opening w/screens and privacy covers
- (2) Maxwell 2500lb 24V DC capstans
- (6) 60' nylon docklines
- (6) 18" aluminum cleats
- (6) Stainless steel Hawse eyes forward, (2) at swim grid plus (2) additional cleats at stern for vessel on shore boat tie off
- (8) 36" inflatable fenders with 3/8" nylon line
- (8) Fender cleats (four per side) with stainless steel rub rail
- (2) Large fenders
- (2) Large ball fenders

Aft Deck

The large aft deck offers excellent accommodations for entertaining and three-sided EZ2CY wind break enclosure glass all around aft deck.

- GE refrigerator
- Kitchen Aid ice maker
- White Corian countertop
- Sink with hot and cold running water with storage area
- Hand-held shower with hot and cold water
- Storage lockers in bulwark
- Spiral staircase up to flybridge and down to crew quarters
- Teak swim platform, stairs and aft deck
- EZ2CY Glass
- Sun Bright TV

Fore Deck

- Cabin top
- Bow sun lounge with Sunbrella cushions and covers
- Stereo system with volume control and speakers from main system
- Non-skid on all forward decks

Electronics & Navigation

- Garmin 25 kw radar 48"
- Furuno 25 kw radar 48"
- Garmin 5212s in flybridge and pilothouse
- Northstar 6100i N2
- (2) Greenmarine screens
- SIMRAD AP28 auto pilot
- B&G HS 2000
- (2) ICOM IC-M504 VHF radios in pilothouse and flybridge
- Intellion 8 SAT TV dish
- PC with flush flat screens
- Chart plotter with NobelTec software
- Furuno autopilot
- Sea Tel V-Sat
- Camera System
- Fusion stereo
- Spot light

Hull

Construction: The hull and deck are laminate of composite fiberglass construction composed of E glass hybrid fabrics, impregnated with polyester resins and vacuum bonded to linear and/or cross linked PVC foam core. Two layers of anti-blister Epoxy black bottom paint; two part high gloss polyurethane hull house and weather deck is Westport white.

Electrical System

- New atlas system
- Battery charger
- (8) AGM batteries
- Bilge alarm and gray water tank alarm
- (4) smoke alarms
- Pilothouse chart light
- Crew shower sump indicator
- (2) Ritchie compass (flybridge and pilothouse)
- Engraved face plates
- Lighting at house sides, foredeck, aft deck stairs, aft deck overhead, flybridge deck
- Rope lighting under bar
- (2) 100 Amp Charles Industries isolation transformers with one step auto voltage adjustment
- Lighting protection with hull Dyna plate an mast probe

- All staterooms have 110V reading lights and 110V receptacles for table lamps except for Captain/Crew, which have DC reading lights
- Halogen recessed light fixtures
- 24V DC and 110V AC rope lighting
- (1) ACR searchlight
- (1) 100 Amp receptacle on aft deck
- (1) 100 Amp Glendinning reel in engine room starboard side
- (1) 100' shore cord
- TV and phone outlets
- (1) 100' TV/phone cord also located at Glendinning outlet
- 24V DC shower lights with white trim
- Vimar and Leviton receptacles and switching throughout
- Aqua Signal navigation lights

Engine Room

- DDEC controls
- DDEC synchronizer and underwater exhaust
- (2) 65Kw Northern Lights generator with hydro elastic mounts, sound shields, water lift mufflers, exhaust/water separator cyclones and water temperature, oil pressure & hour meters installed on panel near generators, both generators have remote start/stop in pilothouse (port 4135 hrs & stbd 4115 hrs April 2016)
- 220V 4.5HP hydraulic bow thruster with 4-station controls
- Fuel fills with dual fill vent pipes vented overboard for fast filling and a 2nd smaller vent, vented overboard for normal operation and one fill for water tank
- ¼" 5086 Alloy aluminum fuel tank with dual fills and standard vents
- 100-gallon gas tank including 12V dispensing pump and hose with auto reel
- (1) Sea Pro 300 fuel filter for each main engine
- (1) Separ 2005MK for each generator, each with vacuum gauge
- Fuel gauges
- Fuel transfer system with flow meter and timer
- Halon fire system with auto/manual controls
- Lube oil change system
- Cast urethane foil shape rudders with stainless stocks
- Rudder posts
- Cambridge high skew Nibral 5-blade custom propellers
- 4" shafts
- Shaft log and packing glands
- Cast bronze struts
- 18' Self-coiling air hose with quick disconnect
- Naiad stabilizers with 9 sq. ft. fins and 2 station control
- Windshield washers and wipers
- Jastrom CCO commercial steering with dual engine driven pumps

- All thru hulls are bonded & connected to transom zincs and shaft wipers
- Zinc anodes
- Marine Air 15 ton chilled water system with new air handlers with Aqua Air controls
- (8) bilge pumps
- Twin MTU 16V2000DDEC Diesels IB 1999 1800HP
- Exhaust system
- Chilled water air conditioning system
- Engine room air conditioning two AC chillers installed in the engine room
- Hot and cold water shower on aft deck
- Spot Zero 1800 GPD water maker
- Hot water heater
- Fresh water wash down system
- White paint package (Snow White)
- Emergency bilge pump
- Sink with hot and cold water
- Stainless steel work bench with 4" vice
- Removable diamond tread aluminum plate floor covering
- Sears 12-drawer tool box (with tools)
- High water alarm
- Storage cabinet

Exclusions

- Name Reserved
- Scout tender
- Wave runner

Performance Data

	800	1000	1200	1400	1600	1800	1900	2000	2100
Boat speed:	9.3	10.3	12.1	12.3	16.3	16.7	18.8	19.7	22.7
Total fuel	9	16	25	44	65	98	103	123	134
Consumption:									

Исключения

При продаже яхты исключаются личные вещи владельца.

Отказ от ответственности

Компания предоставляет описание судна или яхты добросовестно, но не может гарантировать точность этой информации, а также не ручается за техническое состояние. Покупатель должен проинструктировать своих агентов или оценщиков исследовать представленную информацию более подробно, по собственному желанию. Продажа судна или яхты, изменение цены или снятие с продажи будет происходить без предварительного уведомления.

ФОТОГРАФИИ

Salon



Salon



Dining Area



Galley



Bar Detail



Country Kitchen



Master Stateroom



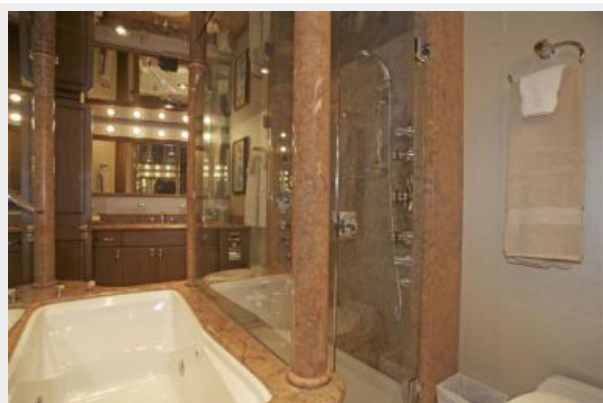
Master Stateroom 42" TV



Master Stateroom



Master Bath



Master Head



VIP Stateroom



Guest Stateroom



Head



VIP Head



Head



Guest Stateroom



Crew Quarters



Crew Quarters



Crew Quarters



Crew Quarters



Crew



Crew Head



Foyer



Lazarette





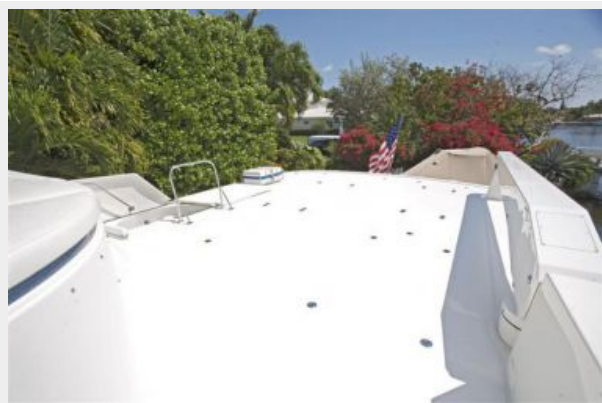
Flybridge



Flybridge Helm



Flybridge



Foredeck





Engine Room



Engine Room

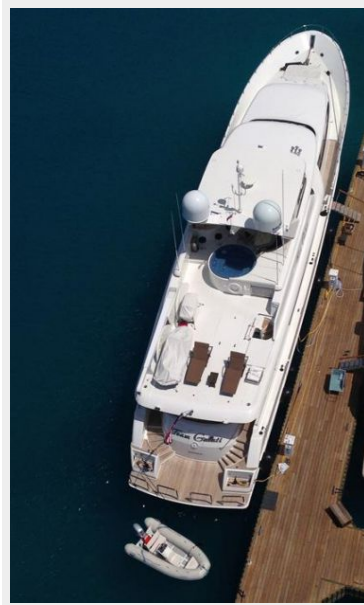


Windlass



Engine Room





КОНТАКТЫ

Андрей Шестаков (Andrey Shestakov) – ведущий яхтенный брокер отдела продаж яхт и судов компании Shestakov Yacht Sales Inc. Официальный представитель Shestakov Yacht Sales Inc. для русскоговорящих клиентов в центральном офисе компании в Майами/Форт Лодердейл/Флорида/США.

Контактная информация

Email: andrey@shestakovyachtsales.com

Web: shestakovyachtsales.com

Телефоны

Краснодарский край: **+7(918)465-66-44**

США, Майами, Флорида: **+1(954)274-4435**

Время работы

Понедельник – Суббота: **9:00 - 21:00**
EDT

Воскресенье: **Закрито**

Адрес



Harbour Towne Marina, 850 NE 3rd St,
STE 213, Dania, FL 33004