

DREAM CAT — VOYAGE YACHTS



Builder: VOYAGE YACHTS

Year Built: 2007

Model: Catamaran

Price: PRICE ON APPLICATION

Location: United States

LOA: 45' 0" (13.72m)

Beam: 25' 1" (7.65m)

Max Draft: 3' 6" (1.07m)

Our experienced yacht broker, Andrey Shestakov, will help you choose and buy a yacht that best suits your needs **Dream Cat — VOYAGE YACHTS** from our catalogue. Presently, at Shestakov Yacht Sales Inc., we have a wide variety of yachts available on our sale's list. We also work in close contact with all the big yacht manufacturers from all over the world.

If you would like to buy a yacht **Dream Cat — VOYAGE YACHTS** or would like help answering any questions concerning purchasing, selling or chartering a yacht, please call **+1(954)274-4435**

TABLE OF CONTENTS

TABLE OF CONTENTS	2
SPECIFICATIONS	3
Overview	3
Basic Information	7
Dimensions	7
Speed, Capacities and Weight	7
Accommodations	8
Hull and Deck Information	8
Engine Information	8
PHOTOS	9
CONTACTS	18
Contact details	18
Telephones	18
Office hours	18
Address	18

SPECIFICATIONS

Overview

The Voyage 450 (440+) is the refinement of the award-winning Voyage 440 bluewater luxury catamaran. With head turning good looks, excellent performance, and a build quality second to none in her class, Voyage catamarans are in high demand both as long distance cruisers and income producing charter yachts.

DREAM CAT is the newest and most upgraded Voyage 450 on the market. She has some significant equipment upgrades (including extra water storage capacity, Raymarine 435 chartplotter, wireless remote autopilot, spinnaker and gear, dual boarding ladders and stern showers, and much more) DREAM CAT had a NEW Generator, New Air Conditioning Unit, and New House Batteries installed in 2012. See the full specification for the extensive list of upgrades since 2014, including NEW YANMAR SD60 SAILDRIVES.

Easy to see by appt in Ft Lauderdale.

Additional Specs, Equipment and Information: **Boat Name** Dream Cat **Specs** Designer: Alexander Simonis & Voyage Yachts Keel: Fin Hull Shape: Catamaran **Dimensions** LOA: 44 ft 9 in Beam: 25 ft 1 in LWL: 40 ft 6 in Maximum Draft: 3 ft 6 in Displacement: 20240 lbs Bridge Clearance: 62 ft 0 in Headroom: 6 ft 3 in Dry Weight: 20240 lbs **Engines** Engine 1: Engine Brand: Yanmar Year Built: 2007 Engine Model: 40 hp Engine Type: Inboard Engine/Fuel Type: Diesel Drive Type: Sail drive Engine Power: 40 HP Engine 2: Engine Brand: Yanmar Year Built: 2007 Engine Model: 40 hp Engine Type: Inboard Engine/Fuel Type: Diesel Drive Type: Sail drive Engine Power: 40 HP **Tanks** Fresh Water Tanks: (205 Gallons) Fuel Tanks: (106 Gallons) **Accommodations** Number of single berths: 2 Number of double berths: 4 Number of heads: 4

Accommodations

The Voyage 450 is a performance, luxury, bluewater cruising catamaran. The spacious galley up combines with the saloon and cockpit to form an exceptional entertainment area. All cabins have queen-size beds. Dream Cat is a charter version with four queen-size cabins, and four head / showers. The deck has been designed for safety and shorthanded sailing with all controls led aft to the coachroof winches. The 450 also features a generous performance sail plan. The ample deck and trampoline area allow for comfortable outdoor activities, and the large cockpit is shaded by a hardtop bimini. The traveler arch features a step-through to the dive platform.

Specifications

Designer: Simonis Voogd and VOYAGE yachts Overall Length: 44.7 ft Waterline Length: 41 ft Beam: 25.1 ft Draft: 3.5 ft Mast Height off DWL: 62 ft Displacement: 20240 lbs Sail area: 1120 ft² Water Capacity: 205 US Gal Fuel Capacity: 106 US Gal 2 x Engines: 40 Hp

YANMAR Berths: 8 + 2**UPGRADES 2014-15**

ANCHOR WINDLASS 2014 UPGRADED TO 1500 WATTS
NEW ANCHOR CHAIN 250' 2014
NEW SD-60 SAIL DRIVES 2014
FREEZER REBUILD 2014 GOES AND HOLDS 0 DEGREES
NEW BOTTOM PAINT
MAIN SAIL RESTITCHED AND UV BLOCKS ADDED 2014
NEW LINES
NEW VHF RADIO 2014
REAR CURTAINS 2014
NEW OUTBOARD 2014
GALVANIC ISOLATOR 2014
NEW DOCK LINES
NEW POWER CORDS
NEW ST60 WIND 2014
NEW ALTERNATOR Port Side 2014
NEW ENGINE MOUNTS all 2014
NEW ELEMENT STARBOARD WH 2014
NEW HOUR METERS 2014
REMOVED FUEL TANK AND CLEANED 2014
NEW MAIN HAYLARD BLOCK 2013
NEW PORT ENGINE HATCH COVER 2014
NEW ESCAPE HATCH 2014
NEW JIB INSTALLED 2015
NEW 22" SMART TV 2014
NEW CUSHIONS 2014
NEW WINDOW CURTAINS 2014

HULL DECK AND BULKHEADS

• Antifouling over epoxy based osmosis barrier • Closed cell PVC foam core, vacuum bonded for stiffness, strength and minimal weight • Forward water tight compartments with horizontal bulkheads • Hand laid-up GRP construction using multi layers of Quadraxial glass roving, isophthalic and orthophthalic polyester resin and other highest grade material • Low aspect reinforced keels • Marine ply and balsa core on critical

structure bulkheads for added strength and stiffness • Reinforced fitting areas for cleats and chain plates • Skeg supported rudders
DECK FITTINGS: STAINLESS STEEL, Grade 316 • Bow pulpits with teak seats • Double guard wires • Grab rails on coach roof • Pushpits on stern with brackets for life ring buoys and overboard lights • Stanchions and stanchion bases • Swim ladders Port and Starboard • Water stays attachment points for bow sprit • Gates in guard wires • Swim ladder Port

DECK EQUIPMENT

• 1 x Electric windlass: LOFRANS • 2 x Primary winches on coach roof: ANDERSEN 46ST
 • 2 x Secondary winches in cockpit: ANDERSEN 46ST • 8 x Aluminium mooring cleats • Teak walkway between trampolines • Tracks, cars, jammers and blocks • Webbing trampolines • Propane BBQ (PARKER Grill) on Dive Platform • Snorkeling Equipment
PLUMBING: • 2 x Black water systems and holding tanks • 2 x Manual bilge pumps • 2 x Water heater 22 litre • 4 x Automatic electric bilge pumps • Pressurized hot and cold deck showers on both transoms • Self draining cockpit

HATCHES AND WINDOWS:

• 11 x LEWMAR hatches • 2 x GRP locker lids: foredeck • 7 x GRP locker lids: cockpit • 8 x LEWMAR port lights • 8 x Reflective laminated safety glass windows • Anodised aluminium framed sliding door with safety glass and fixed opening positions • Ventilation/Escape hatch with teak grid in galley • Dive equipment hatch and locker in aft coaming with extra dive tank storage

SAFETY EQUIPMENT:

• Basic safety equipment including: flares, life jackets, first aid kit and life rings
RIGGING: • 7/8th fractional rig • Anchor chain lead internally through compression post new 300' chain 2014 • Anodised Aluminium mast, boom, cross beam and double compression post • Attachment point for bow sprit • Color coded sheets and control lines • Double purchase main halyard • Flag halyards, Port and Starboard • Mast supported by triple spreaders, intermediate and cap shrouds, forestay and inner forestay • Reefing lines x 2 and luff pendants x 2 • Telescopic boom derrick for hauling dinghy on to dive platform
SAILS: • Fully battened main with large roach, 2 reef points, 10.3 oz high modulus, cross cut Dacron. Restitched 2014 • Furling genoa with foam luff and UV cover, 7.3 oz high modulus cross cut Dacron. new 2014 • Quantum Asymmetrical Spinnaker with sock restitched 2014 • HARKEN battcar system for mainsail • Mainsail stowage pack with lazy jacks • PROFURL genoa roller furler

COCKPIT/AFT DECK:

• 7 x Storage lockers • Cockpit deck level walk through to dive platform • Dingy stowage supports and BBQ mounting point • Double helmsman's seat • GRP Cockpit table • Sheet pouches x 2, Utility pouch x 1 • Steering console including • Instrument console • Stainless steel steering wheel • Teak dive platform/aft deck • Traveller arch • Cockpit

Cushions • Cockpit table - White GRP - Removable • • Hard top Bimini with spray dodger
ACCOMMODATION: MAIN SALOON • ALCANTARA upholstered settee • Coffee table •
CORIAN type work surfaces • Modules in moulded GRP • Standing height throughout
6'8" • Storage in seating modules GALLEY: • 4 x Burner propane hob and propane oven •
CORIAN type work surfaces with stainless steel rails and fiddles • Microwave oven • Front
opening refrigerator - 12V air cooled FRIGOBAT ALDER/BARBER • Large recessed drip
tray • Modules in moulded GRP • Pressurized hot and cold, and salt water systems •
Stainless steel sink • Stainless steel waste chute with cover • Top opening freezer, 12V air
cooled FRIGOBAT capri50/380 plate/t stat and speed card New 2014 • Galley
Appointments FORWARD AND AFT CABINS: • Access to bow storage • Cabin and
reading lights • Cabin lights & reading lights • Cave lockers • Hanging and storage
cupboards • Laundry locker with upholstered cover • Modules in moulded GRP • Queen
size bunk with split mattresses • Stainless steel towel rail • Cabin Appointments BOW
CABINS • Cabin Appointments • Cabin Light • Fan • Hatch on bow and access hatch from
fwd cabins • Single V-Berth

HEAD COMPARTMENTS:

• Integrated shower grate and sump • Manual marine toilet all replaced or rebuilt 2014 •
Mirror • Modules in moulded GRP • Stainless steel towel rail • Vanity cabinet • Wash basin
and shower with hot and cold water • 4 x Heads, 2 x Port, 2 x Stbd

NAVIGATION CENTRE:

• Access panels to electrical installation and systems • Instrument console • Navigation
seat • • Chart table with recessed chart stowage INSTRUMENTATION: • Compass • ICOM
M-402 VHF Radio with antenna on mast new 2014 • RAYMARINE ST60 Tridata & Wind
new 2014 • RAYMARINE ST6001+ Autopilot with WHITLOCK rotary drive and wireless
remote

RAYMARINE 435 color Chartplotter

COMFORT AND LIFESTYLE:

• Air Conditioning - 22 000 BTU new forward unit 2012 • Dimmers, Courtesy Lights, Boom
light, 12V outlet • Flat Panel 22 inch TV new 2014 • Generator, NORTHERN LIGHTS 6KW
new 2012 • Sound system, 12V Radio/CD and 4 Marine speakers in saloon/cockpit
ELECTRICS: • 2 x 120A AMPLE alternators with SMART multi stage regulators • 2 x
Engine start batteries (12V) @ 65 AH • AC shore cable socket • Battery isolator switches •
Ceiling lights • Circuit breaker panel • Cockpit lights • Deck light • Interior AC outlets: 3 in
saloon, 1 in each cabin • Lazarette and engine compartment lights • LINK 2000 battery
management system • Mast top and lower navigation lights • New Ships load battery
banks 2012 (- 440AH x 2 (880AH) • HEART 2500W Inverter/Charger 12V to 110V • Shore
power cable 30A

ENGINE EQUIPMENT: • 2 x Instrument panels with engine hour meters • 2 x 55A

alternators • High pressure fuel lines • Sound insulation • 2 x 40Hp fresh water cooled YANMAR diesel engines with saildrives and fixed propellers

MOORING GEAR AND GROUND TACKLE: • 25kg DELTA anchor with tipper • 100m galvanized chain and 50m nylon anchor rode • Anchor bridle with thimbles for anchoring • Dock lines and fenders • Two anchor rollers, one with tipper • FORTRESS anchor F23 INFLATABLE • 12ft Rigid bottom Inflatable tender boat with 15Hp outboard engine

Cruise ready- all linens, galleyware, and interior appointments included.

Broker's comments

Dream Cat was the nicest 450 to come out of the Voyage charter fleet, and has been upgraded as a private yacht by her owners over the last few years.

Owner's have their eyes on a larger Voyage cat and are anxious to move up as soon as possible!

Basic Information

Category: Catamaran

Model Year: 2007

Year Built: 2007

Country: United States

Dimensions

LOA: 45' 0" (13.72m)

LWL: 40' 6" (12.34m)

Beam: 25' 1" (7.65m)

Max Draft: 3' 6" (1.07m)

Clearance: 62' 0" (18.90m)

Speed, Capacities and Weight

Displacement: 20240 Pounds

Water Capacity: 205 Gallons

Fuel Capacity: 106 Gallons

Accommodations

Total Cabins: 4

Hull and Deck Information

Hull Material: Fiberglass

Engine Information

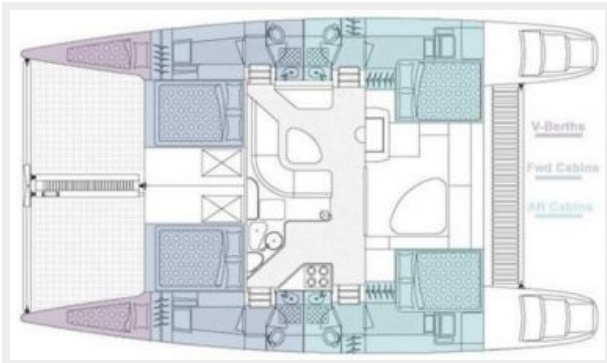
Engines: 2

Manufacturer: Yanmar

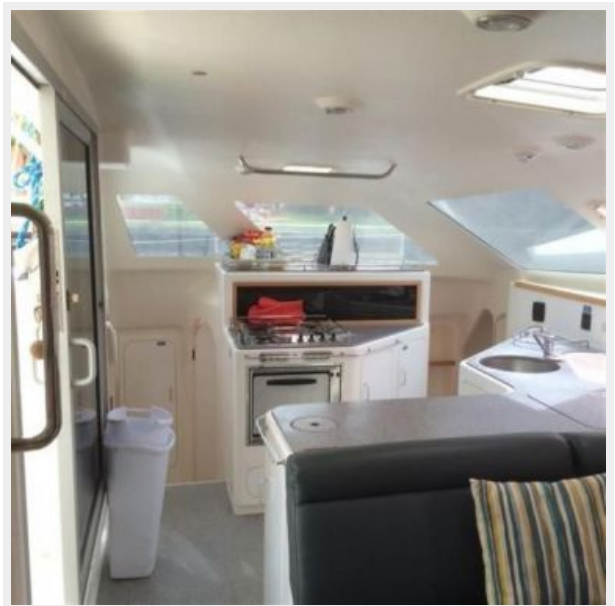
Engine Type: Inboard

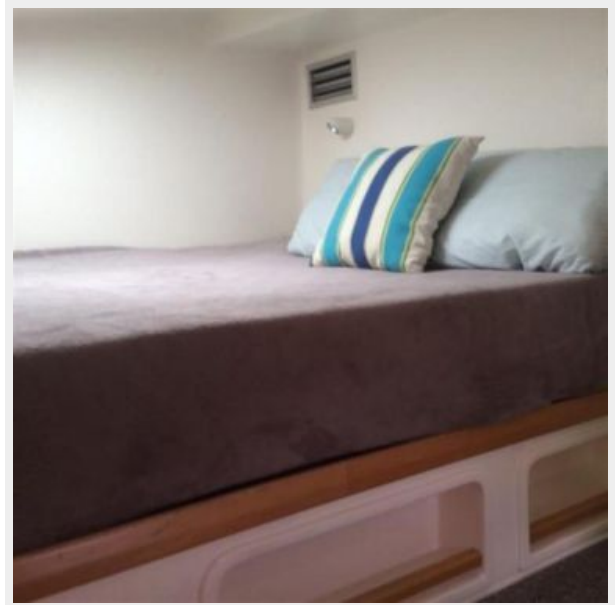
Fuel Type: Diesel

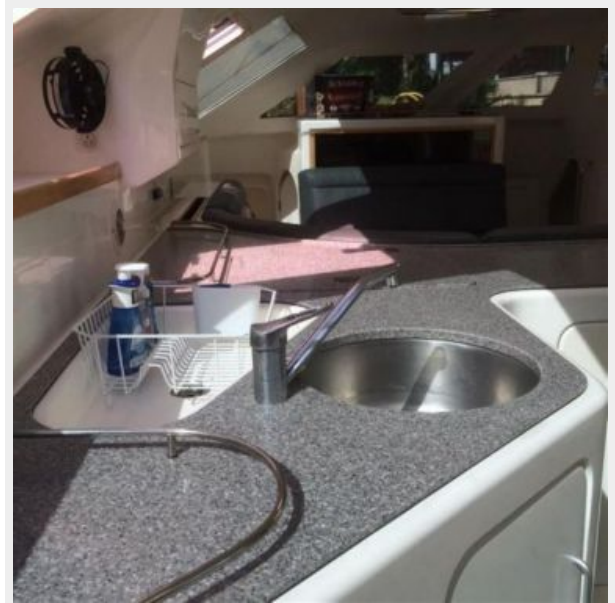
PHOTOS

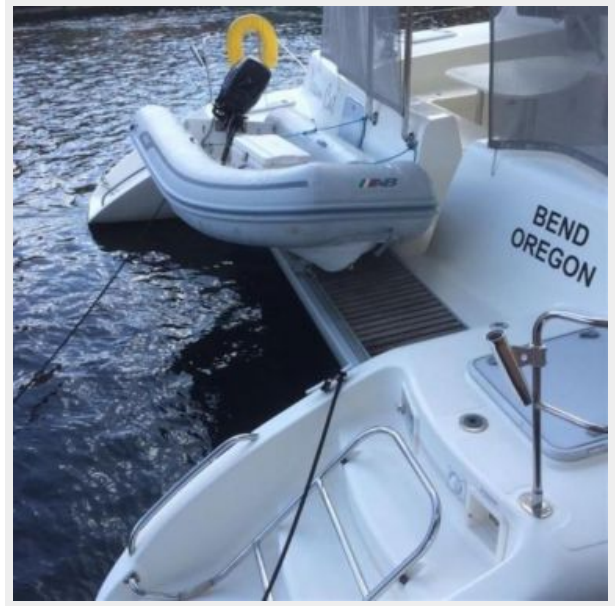


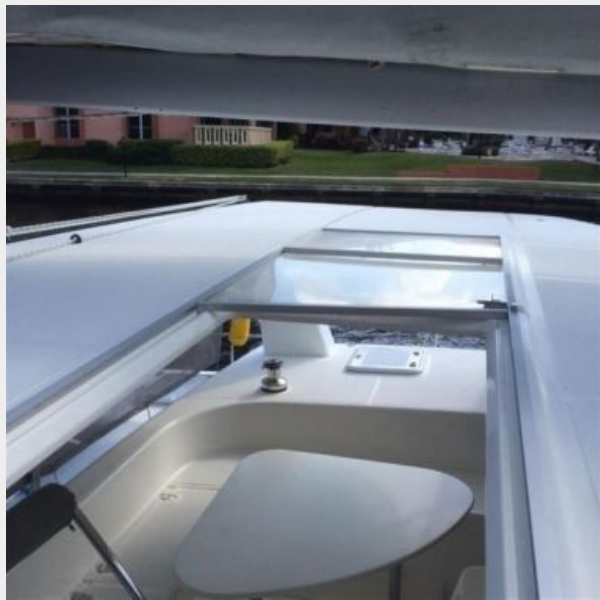
















CONTACTS

Andrey Shestakov, leading yacht broker of the sales department of Shestakov Yacht Sales Inc. Shestakov Yacht Sales Inc., the official representative of the Miami/Fort Lauderdale FL headquarters.

Contact details

Email: andrey@shestakovyachtsales.com

Web: shestakovyachtsales.com/en/

Telephones

USA: +1(954)274-4435

Office hours

Monday – Saturday: **9:00 - 21:00** EDT

Sunday: **closed**

Address



Harbour Towne Marina, 850 NE 3rd St,
STE 213, Dania, FL 33004