

WIANNO — SYMBOL



Судостроитель: SYMBOL

Год постройки: 2004

Модель: Моторная яхта

Цена: ЦЕНА ЯХТЫ ПО ЗАПРОСУ

Местонахождение: United States

Длина общая: 58' 0" (17.68m)

Ширина: 17' 6" (5.33m)

Мин. осадка: 4' 0" (1.22m)

Крейс. скорость: 10 Kts. (12 MPH)

Макс. скорость: 18 Kts. (21 MPH)

Купить **WIANNO — SYMBOL** а также выбрать подходящую вам яхту из нашего каталога яхт вам поможет опытный яхтенный брокер Андрей Шестаков. На сегодняшний день компания **Shestakov Yacht Sales Inc.** имеет большое количество яхт в собственном списке продаж, а также тесно сотрудничает со всеми крупными яхтенными производителями по всему миру.

Для того чтобы купить яхту **WIANNO — SYMBOL** а также проконсультироваться по любому вопросу связанному с покупкой, продажей, чартером яхт позвоните по телефону **+7(918)465-66-44**.

ОГЛАВЛЕНИЕ

ОГЛАВЛЕНИЕ	2
ХАРАКТЕРИСТИКИ	6
Основная информация	6
Размеры	6
Скорость, вместимость и масса	6
Размещение	6
Корпус и палуба	6
Информация о двигателе	7
ПОДРОБНОЕ ОПИСАНИЕ	8
Remarks	8
Overview	8
Accommodations	8
Main Salon	9
Galley	9
Pilothouse	9
Flybridge, Deck, and Hull Equipment	10
Electronic Equipment	11
Electrical System	11
Исключения	12
Отказ от ответственности	12
ФОТОГРАФИИ	13
Salon with Galley Pass Through	13
Salon Starboard	13
Main Salon	13
Pop Up TV-Salon	13
Galley	13
Galley Up to Starboard	13
Galley with Salon Pass Through	14

Opening Hatch	14
Port Lower Helm Seating	14
Lower Helm Electronics Panel	14
Lower Helm	14
Lower Helm	14
Lower Vestubule	15
Stairway to Owners Suite	15
Stairway to Owners Suite	15
Owners Suite	15
Owners Suite	15
Owners Suite	15
Owners Suite	16
Owners Suite Head	16
Owners Suite Head	16
Owners Suite Head	16
Stairway to Forward Stateroom	16
VIP Stateroom-Forward	16
VIP Stateroom-Forward	17
VIP Stateroom-Forward	17
Guest Head	17
Guest Stateroom	17
Washer/Dryer	17
Flybridge Helm Seat	17
Flybridge Helm	18
Flybridge Grill, Sink, Refrigerator	18
Cockpit Seating and Table	18
Cockpit Storage Lazzarette	18
Cockpit	18
Multiple Cockpitdoors	18

Cockpit Starboard Controls	19
Cockpit Overhead	19
Cockpit Overhead	19
Foredeck	19
Foredeck Looking Aft	19
New Muir Windlass	19
Secure Bow Cleat	20
Fuel Fill	20
UMT Davit	20
Starboard Side Deck Looking Aft	20
Starboard Pilot House Door	20
Secure Anchor	20
Integral Swim Platform	21
Starboard Side	21
KW Westerbeke Gen Set	21
ER Door from Lazzarette	21
KW Northern Lights Gen Set	21
1572 Gen Set Hours	21
2000 Hr. Service	22
Lazzarette	22
Engine Room	22
Engine Room	22
Engine Room C-12 Caterpillar	22
Engine Room Looking Aft	22
Exhaust System	23
Fire Supression	23
Fuel Filtration	23
Inverter	23
Lazzarette Storage	23

Shore Power Retrieval	23
Twin Gen Sets	24
Wianno	24
Wianno	24
Wianno	24
КОНТАКТЫ	25
Контактная информация	25
Телефоны	25
Время работы	25
Адрес	25

ХАРАКТЕРИСТИКИ

Основная информация

Тип судна: Моторная яхта

Модельный год: 2004

Год постройки: 2004

Страна: United States

Размеры

Длина общая: 58' 0" (17.68m)

Ширина: 17' 6" (5.33m)

Мин. осадка: 4' 0" (1.22m)

Трапы: 22' 0" (6.71m)

Скорость, вместимость и масса

Крейс. скорость: 10 Kts. (12 MPH)

Крейсерская скорость поворота: 1300 Kts.

Макс. скорость: 18 Kts. (21 MPH)

Макс. скорость поворота: 2300 Kts.

Вместимость воды: 250 Gallons

Вместимость сточного бака: 100 Gallons

Объем топливного бака: 850 Gallons

Размещение

Всего кают: 3

Корпус и палуба

Материал корпуса: Fiberglass

Информация о двигателе

Двигатели: 2

Производитель: Caterpillar

Модель: C-12

Тип двигателя: Inboard

Тип топлива: Diesel

ПОДРОБНОЕ ОПИСАНИЕ

Remarks

Wianno has benefited from knowledgeable past ownership, and has been significantly upgraded by the current owner prior to her 2014 cruise to New England. Flag Blue hull paint (2014), new tender with a 30 HP Yamaha 4 stroke, new interior soft goods, Caterpillar C-12 engine service, as well as the 16KW and 10KW generator service. "Wianno" is extremely user friendly with her three station controls (pilot house, flybridge, and cockpit) bow and stern thruster, wide safe full walk around decks, and robust stainless steel hardware. The hinged radar arch reduces her 22ft bridge clearance to accommodate "The Great Loop" and her shoal draft will make for an excellent Bahamas cruiser. Prop pockets, four bladed Nibral wheels, water maker dual generators, and the 700HP CATs will cruise very economically at 10 Knots, yet deliver 17 Knots at fast cruise. (2050 RPMS, WOT 2300 RPMS) The pilothouse layout is extremely user friendly as it provides excellent visibility not only from the helm, but also from the large port side dining area and the large granite top galley to starboard. Two access points, (cockpit and pilot house) lead to the large flybridge which contains a 2 person helm seat, ample guest seating, grill, sink, and refrigerator. The 1000lb UMT davit and tender is launched from the flybridge which leaves great access to the walk through transom to the swim platform. The interior joiner work has many custom features that blend well with the large side windows and sliding cockpit door. The current owner plans on downsizing after his cruise, and encourages your inspection and offers on "Wianno".

Overview

The original owners reported over one hundred and fifty thousand dollars of improvements including a second generator, new Bimini top, upgraded television and stereo, KVH satellite receiver, enlarged Wesmar stabilizers, Village Marine watermaker, as well as additional factory upgrades.

Accommodations

- The three staterooms are reached via a stairwell from the pilothouse
- The master stateroom is aft with a head to starboard (very large shower with seat bench)
- Techma toilets
- Vanity located to port
- The master bed is a queen centerline with under bed storage
- Shoji screens complement the upscale décor and slide open to access porthole windows
- Mirrored doors accent the, cedar lined closets
- The 3rd stateroom has a single berth, and a port side office area

- VIP stateroom features a queen centerline bed that hinges up for storage
- Both VIP and guest staterooms share a large head with dual access doors for privacy, Techma Vacuum toilet, and a large stall shower

Main Salon

- Cherry wood with burl accents throughout
- Custom audio/video entertainment package, including 42” salon pop up TV, DVD and stereo
- Four (4) speaker surround sound in ceiling
- A spacious salon features an 11 foot U-shaped fabric covered sofa, to starboard
- New carpeting 2014
- Countertops and cabinetry in burl woods
- Large windows provide plenty of viewing ability and lighting
- Stainless steel sliding salon doors

Galley

The galley is to starboard on the same level as the pilot house. With U-shaped granite counter tops, cabinets with ample storage, and a pass through to the salon

- LCD TV facing settee area by the galley
- Subzero upright refrigerator with two freezer drawers (cherry wood) with icemaker
- Stainless steel sink with disposal and filtered water
- Dishwasher
- GE Profile microwave/convection/radiant oven
- Kenyon four burner ceramic cooktop

Pilothouse

- The pilothouse is up four steps from the salon
- Center helm station with a Stidd helm chair
- To port, a huge raised settee with an expandable cherry wood table
- Door to starboard accesses the walk around decks
- A cherry wood stairway to port accesses the flybridge
- Accommodations via a stairwell to starboard in the pilothouse
- Skylight hatch
- Windshield cover
- Main electrical distribution panel with glass doors
- Chart storage drawer
- Burlwood Helm

- Helm station with control, gauges, alarms compass and teak steering wheel

Flybridge, Deck, and Hull Equipment

- • New 12' console tender with 30HP Yamaha 4 stroke engine
- The hull has shallow propeller prockets and is solid FRP layup
- Hullsides, decking and the superstructure are all foam-core laminate
- Windows are tempered safety glass (sides tinted) and frameless with silicone seams
- The exterior surfaces are gelcoat with awlgripped decks, Flag Blue hullsides (2014)
- Two water tanks and two holding tanks
- Drains, sumps and bilges are connected to a common manifold tube that runs length wise down each side and discharges aft under platform
- Main exhausts are underwater type with stern bypass
- A roomy cockpit features a built in bench settee (Sunbrella cushioned with storage) aft with a gloss teak table
- Ladder to flybridge
- A lazarette area offers plenty of storage and access to the engine room
- Covered walk around decks feature oval stainless steel handrails and side boarding gates
- Foredeck with dual storage hatches and customized anchor chute with new windlass (2014)
- Flybridge features a large half-circular shaped settee with a high/low table
- Double seating Stidd chair, easily seats 2 people
- Duplicate navigational system and electronics
- UMT 1000 pound davit and remote control, located on flybridge
- NEW AB hard bottom tender with 30HP Yamaha (2014)
- Life raft, 8 man
- Aft of the settee is a wet bar sink, electrical grill, icemaker and storage
- Bimini top with stainless steel frame
- All canvas to include bimini New 2013
- Exterior covers (flybridge)
- Venturi windscreen (Plexiglass with stainless steel frame)
- Bomar deck hatches (VIP stateroom and pilothouse)
- Pacific Coast watertight door (flybridge)
- Maxwell windlass with deck and two station controls NEW 2014
- Eighty-pound stainless steel plow anchor with galvanized chain, custom anchor chute through the bow
- Third helm station, to starboard on the aft deck
- EPIRB category II with GPS
- Fenders, dock lines
- Foredeck fresh and salt water wash-downs
- Transom shower and swim ladder

Electronic Equipment

- Bow and stern thrusters
- Simrad AP-2104 autopilot (with cable extension cord pilothouse)
- AP22 Furuno NavNet plotter/radar
- B&G H100 speed, depth, temperature units (pilothouse, flybridge, master stateroom)
- Icom M602 VHF's with hailer (pilothouse, flybridge)
- CCTV camera, aft deck
- Rule Aqua Meter compass
- Garmin GPS map 7215, touch screen chart plotter
- Garmin GXM51 satellite weather
- Garmin sounder
- Glendenning engine controls, installed 2010 (3 stations)
- Side power bow and stern thrusters
- Caterpillar port and starboard engine displays (pilothouse, flybridge)
- Window wipers, washers
- Windlass control, new windlass 2014
- Geostate Wi-Fi booster
- KVH satellite television with two direct satellite receivers
- Denon A/V surround sound system
- Pioneer multi-disk DVD player
- LCD TV in galley/pilothouse area
- Staterooms have LCD TV's (master with DVD player)
- Salon central AM/FM/CD with volume control each room and outside intercom system

Electrical System

- The main electrical panel is on the starboard side of the pilothouse helm and hinges out for easy identification and servicing of the color coded wiring
- Northern Lights 16.5KW genset with remote panel 1572 hours as of 1/21/15
- Westerbeke 10KW genset (900 hours as of 1/21/2015)
- Trace 4,000 Watt Inverter (doubles as a charger)
- Charles 24 Volt battery charger (backup)
- Charles 12 Volt battery charger
- Batteries (house, engine starting, genset, electronics) New 2013
- Glendenning 50 AMP cablemaster shore power reel (75-foot, port mid-ship)
- One 50 AMP, one 30 AMP shore power cables 125 VAC
- Telephone/CAT TV inlet 125/250 VAC distribution panel with thermal circuit breakers
- Digital engine gauges
- Wesmar tank gauges
- Holding tank gauges
- Monitor system with high water alarms
- Bonding system with transom hull zinc/shafts have commutator-type brush grounding

- Halogen 24 VDC lighting throughout interior
- Exterior courtesy lighting
- Exterior spreader lights
- Navigation lighting
- Courtesy interior rope lighting
- ACR searchlight (pilot house/flybridge)
- NuTone central vacuum system
- Asko front-load full size washer
- Asko front-load full size dryer

Исключения

При продаже яхты исключаются личные вещи владельца.

Отказ от ответственности

Компания предоставляет описание судна или яхты добросовестно, но не может гарантировать точность этой информации, а также не ручается за техническое состояние. Покупатель должен проинструктировать своих агентов или оценщиков исследовать представленную информацию более подробно, по собственному желанию. Продажа судна или яхты, изменение цены или снятие с продажи будет происходить без предварительного уведомления.

ФОТОГРАФИИ

Salon with Galley Pass Through



Salon Starboard



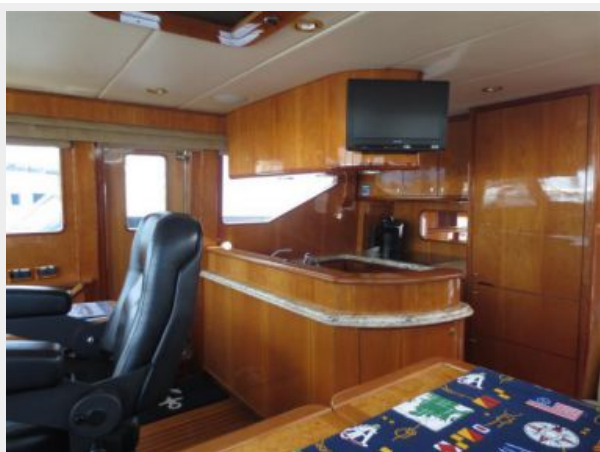
Main Salon



Pop Up TV-Salon



Galley



Galley Up to Starboard



Galley with Salon Pass Through



Opening Hatch



Port Lower Helm Seating



Lower Helm Electronics Panel



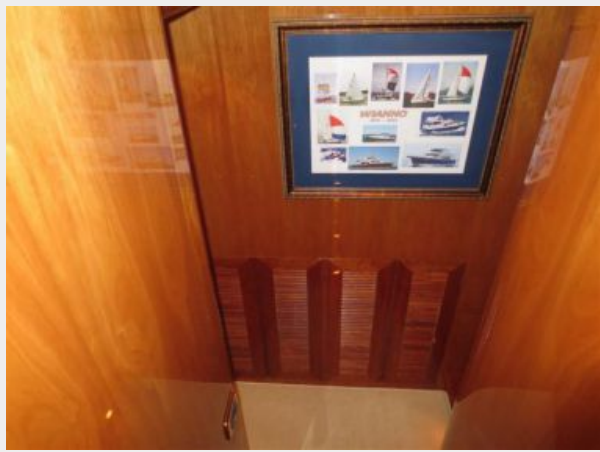
Lower Helm



Lower Helm



Lower Vestubule



Stairway to Owners Suite



Stairway to Owners Suite



Owners Suite



Owners Suite



Owners Suite



Owners Suite



Owners Suite Head



Owners Suite Head



Owners Suite Head



Stairway to Forward Stateroom



VIP Stateroom-Forward



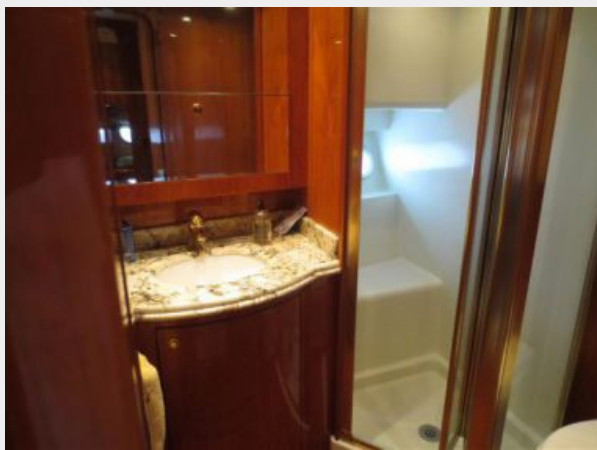
VIP Stateroom-Forward



VIP Stateroom-Forward



Guest Head



Guest Stateroom



Washer/Dryer



Flybridge Helm Seat



Flybridge Helm



Flybridge Grill, Sink, Refrigerator



Cockpit Seating and Table



Cockpit Storage Lazzarette



Cockpit



Multiple Cockpitdoors



Cockpit Starboard Controls



Cockpit Overhead



Cockpit Overhead



Foredeck



Foredeck Looking Aft



New Muir Windlass



Secure Bow Cleat



Fuel Fill



UMT Davit



Starboard Side Deck Looking Aft



Starboard Pilot House Door



Secure Anchor



Integral Swim Platform



Starboard Side



KW Westerbeke Gen Set



ER Door from Lazzaretto



KW Northern Lights Gen Set



1572 Gen Set Hours



2000 Hr. Service



Lazarette



Engine Room



Engine Room



Engine Room C-12 Caterpillar



Engine Room Looking Aft



Exhaust System



Fire Suppression



Fuel Filtration



Inverter



Lazarette Storage



Shore Power Retrieval



Twin Gen Sets



Wianno



Wianno



Wianno



КОНТАКТЫ

Андрей Шестаков (Andrey Shestakov) – ведущий яхтенный брокер отдела продаж яхт и судов компании Shestakov Yacht Sales Inc. Официальный представитель Shestakov Yacht Sales Inc. для русскоговорящих клиентов в центральном офисе компании в Майами/Форт Лодердейл/Флорида/США.

Контактная информация

Email: andrey@shestakovyachtsales.com

Web: shestakovyachtsales.com

Телефоны

Краснодарский край: **+7(918)465-66-44**

США, Майами, Флорида: **+1(954)274-4435**

Время работы

Понедельник – Суббота: **9:00 - 21:00**
EDT

Воскресенье: **Закрито**

Адрес



Harbour Towne Marina, 850 NE 3rd St,
STE 213, Dania, FL 33004