

THE KEEPER — MAINSHIP



Builder: MAINSHIP

Year Built: 2002

Model: Trawler

Price: PRICE ON APPLICATION

Location: United States

LOA: 30' 0" (9.14m)

Beam: 10' 3" (3.12m)

Max Draft: 2' 11" (0.89m)

Our experienced yacht broker, Andrey Shestakov, will help you choose and buy a yacht that best suits your needs **The Keeper — MAINSHIP** from our catalogue. Presently, at Shestakov Yacht Sales Inc., we have a wide variety of yachts available on our sale's list. We also work in close contact with all the big yacht manufacturers from all over the world.

If you would like to buy a yacht **The Keeper — MAINSHIP** or would like help answering any questions concerning purchasing, selling or chartering a yacht, please call **+1(954)274-4435**

TABLE OF CONTENTS

TABLE OF CONTENTS	2
SPECIFICATIONS	3
Overview	3
Basic Information	10
Dimensions	10
Speed, Capacities and Weight	10
Accommodations	11
Hull and Deck Information	11
Engine Information	11
PHOTOS	12
CONTACTS	21
Contact details	21
Telephones	21
Office hours	21
Address	21

SPECIFICATIONS

Overview

WOW!! This is a great boat at a great price!!

Are you ready to go boating? This great Mainship is ready to take you to all your dream destinations!

Custom Hard Top!! Fantastic Electronics!! Great Shine!! Yanmar Power!! This great boat has it all!!

Click on Full Specs to view all the wonderful things this 30 Pilot has to offer!!!

Don't Miss out!! Call Today!!!

Additional Specs, Equipment and Information: **Boat Name** The Keeper **Specs** Hull Shape: Semi-Displacement **Dimensions** LOA: 33 ft 1 in Beam: 10 ft 3 in Maximum Draft: 2 ft 11 in Bridge Clearance: 10 ft 0 in Headroom: 6 ft 4 in Dry Weight: 10000 lbs **Engines** Engine 1: Engine Brand: Yanmar Year Built: 2002 Engine Model: 240 Engine Type: Inboard Engine/Fuel Type: Diesel Engine Hours: 1200 Propeller: 3 blade propeller Drive Type: Direct Drive Engine Power: 240 HP **Tanks** Fresh Water Tanks: (38 Gallons) Fuel Tanks: (175 Gallons) **Accommodations** Number of double berths: 1 Number of heads: 1

Manufacturer Provided Description

Whether you fish, dive, or cruise, the Pilot 30 can fit the bill. The elongated cockpit will allow for plenty of anglers and the wide covering boards will accept a battalion of rod holders. A fresh water washdown and optional swim platform with ladder will please the diver and his crew and the bridgedeck settees will double as extra bunks for the overflow of family and friends or just a great place to tune up a tan.

Accommodations

Sleeps 2 in cabin, 2 in covered cockpit. V-berth has custom made topper mattress with custom sheets. Port and starboard seats with removable varnished wood table. Also provided is separate foot to set the table on the cockpit. Full head with shower and electric flush toilet. Holding tank with electric macerator and deck pumpout. Shower sump with pumpout. New electric water heater. Norcold refrigerator (12v). Pressure and dockside water systems. Galley equipped with 2 burner electric stove, counter top ice box, counter top cabinets including teak dish and cup holder. Stainless steel sink. Additional teak cabinet with magazine rack and mini microwave oven.

Electronics

Actisense:

Actisense NGT-1 ISO NMEA 2000 to serial Gateway.

Actisense NGW-1-ISO NMEA 0183 to NMEA 2000 Gateway.

Garmin:

GPSMap 4210 Chartplotter with 10 inch display, GPS 17X and VUS01 Southwest Florida Supplemental Map.

GPI10 Instrument Display.

GPS17X GPS Receiver with NMEA 2000 Interface.

Intelliducer thru hull depth and temperature transducer – NMEA 2000 connected.

Simrad/Robertson:

Simrad autopilot with Robertson AP11 Control/Display Unit.

Lowrance:

LCX18C Chartplotter/Fishfinder with GPS Receiver and thru-hull transducer.

Lascar:

PanelPilot model SGD 28-M. Digital display of battery voltages.

Standard:

Eclipse DSC+ VHF radios with 6 foot high 6 DB Shakespeare Antennas (two each). The radios are NMEA 0183 network connected to the Garmin GPSMap 4210 which provides GPS coordinate data.

JVC:

AM-FM radio/CD Player KD-SX870/KD-SX770. This stereo system connects to two cabin and two cockpit speakers.

Maretron:

DSM150 high-resolution sunlight viewable color display that interprets and displays NMEA 2000 instrument, navigation and vessel monitoring data.

TLM100 Tank Level Monitor. **Maretron's TLM100 is used to sense fluid levels of tanks by using ultrasonic technology. Ultrasonic, or sound waves, are transmitted via the TLM100 mounted at the top of the tank and the flight times of the sound waves to and from the fluid are measured much like a depth sensor. What this means for you is that there are no**

difficult to handle long probes protruding into the tank, which often foul and/or corrode. Once the TLM100 calculates and transmits the fluid level over the NMEA 2000® network, you can observe tank levels anywhere on the vessel where there is an NMEA 2000® compatible display.

Noland Engineering:

RS11 Analog and Digital Engine Parameters Monitor with NMEA 2000 interface. Data to NMEA Bus include converted: Oil Pressure, Engine Coolant Temperature, Engine Panel Voltage and Engine RPM.

Em-Trak:

AIS B100 transceiver with GPS receiver and NMEA 2000 bus interface. MORAD VHF-159 HD antenna with 6 DB gain.

Chiyu:

BF-430 Serial to Ethernet Converter.

Netgear:

WNDR 3800 Ethernet Switch. It provides the interface to on-board WiFi and to the Bullet 2HP which provides the link to an on-shore Internet Service Provider.

Ubiquiti:

Bullet 2HP high power, high sensitivity 800 MW AP/Router which links on-board Ethernet to on-shore Ethernet via WiFi transmissions. Antenna is an Engenius EAG-2408 8dBi omni directional antenna.

Electrical

Mainship Custom Electrical Panel:

12 each 12 VDC Circuit breakers with LED indicator lights.

7 each 110 VAC Circuit breakers with neon indicator lights.

Shore Power – Generator 110 VAC transfer switch.

3 Auto-Off-Manual On Bilge Pump Switches with remote status display in cockpit.

Generator Power On-Off and Preheat/Stop Start switches.

Blue Sea Systems Auxiliary Panel:

WeatherDeck 4388 Waterproof Circuit Breaker Panel with 8 each 12 VDC Circuit Breakers.

Battery Switches:

Generator battery switch.

Main Engine/House battery switch.

Mastervolt:

Battery AGM Group 8D 12 VDC 270 AH (Installed 10/10/2012)

ChargeMaster 12-25-3. 25 Amp charger with three independent outputs.

SeaVolt:

Battery AGM Group 31 12 VDC 105 AH (Installed 7/17/2012)

ProMariner:

ProTech-4 model 1250 Advanced electronic, fully automatic, four step, 50 AMP battery charger/power supply with three independent outputs.

Advanced Digital Charge and Battery Isolation System.

Johnson Pump:

1250 GPH Ultima Automatic Bilge Pumps. Located forward, midships, and stern Four pumps total. New in 2012.

Marinco:

110 VAC 30 AMP PowerCord cordset.

Cabin Equipment:**Marine Air Systems:**

Vector Compact Reverse cycle 110 VAC air conditioner with Passport II Digital Control/Display unit.

Norcold:

Refrigerator 12 VDC.

Seaward:

110 VAC two burner electric cooktop.

Galanz:

700 Watt Microwave 110 VAC.

Atwood:

Marine Water Heater 110 VAC Model MPD 93757.

Jabsco:

Electric Marine Toilet Model 37010. Connected to holding tank with electric macerator pump and deck pumpout connection.

Weems & Plath:

Ship's clock.

Timex:

Clock, battery operated.

Cabin General Description:

Sleeps 2 in cabin, 2 in covered cockpit. V-berth has custom made topper mattress with custom sheets. Port and starboard seats with removable varnished wood table. Also provided is separate foot to set the table on the cockpit.

Galley:

Corian countertop, counter top cabinets including teak dish and cup holder, ice box, stainless steel sink, two burner, electric stove; 12 VDC Norcold refrigerator. Additional teak cabinet with magazine rack and mini microwave oven.

Head:

Good stand-up headroom at the Corian vanity, stainless steel sink with hand held combination faucet/shower head, mirrored storage cabinet, full head with shower and electric flush toilet. Holding tank with electric macerator and deck pumpout. Shower sump with pumpout. New electric water heater.

Engine and Mechanical

Yanmar (Main Propulsion):

4LHA-STP 240 HP Supercharged Diesel engine #52200. Cruising Speed 18 MPH, Maximum Speed 21 MPH. Engine alarm with emergency stop. Cockpit engine control panel.

Engine hours: 1200 (2/04/2015)

Repairs:

2011: Replaced exhaust piping and silencer.

2012: Removed and cleaned engine coolant and transmission oil heat exchangers. Replaced engine oil heat exchanger with new unit

2013 New Belts, New Fuel Filters, Rebuilt Fuel Pump, and Rebuilt Fuel Injectors

Morse Marine:

Engine Control MT-3.

Racor:

Fuel Filter 500 MA.

ZF Marine:

Marine hydraulic transmission with dripless stuffing box.

Propeller: Three Blade.

NextGeneration:

UCM1-3.5 3.5 KW Diesel Generator, Serial Number B2-5000 with

VDO Coolant Temperature Gauge.

Note that the generator does not supply 12 VDC for battery charging. This function requires running a 110 VAC charger.

Repairs:

2012: Replaced defective engine fuel hose nipples. Replaced fuel control solenoid.

2013: Replaced engine glow plug (2/21/2013).

2013: Generator had rebuild done 8/13 very low hours since rebuild.

Advanced Marine Technologies:

X-Change-R Oil Change System Model 946. Connected to Yanmar and NextGeneration engines.

Jabsco:

3" Engine Room Blower Model 36740.

Steering:

Teleflex Morse:

SeaStar hydraulic steering system.

Trim Tabs:

Bennett:

Trim Tabs, Hydraulic.

Tankage:

Fuel: 175 Gallons.

Water: 40 Gallons.

Holding Tank: 13 Gallons.

Deck

Custom fiberglass hardtop that runs the full length of the cockpit.

Three sided Isinglass cockpit enclosure.

Swim platform with ladder accessible from the deck via a transom door.

Bow pulpit and safety rails.

Anchoring:

New Windless 8/13

Lewmar:

Delta Anchor with 20 feet of chain and 250 feet of nylon line.

Danforth:

Danforth 8 pound anchor with 5 feet of chain and 40 feet of nylon line.

Dock Lines:

8 Lines.

Safety Equipment

Safety Equipment:

Sea-Fire:

Automatic Halon engine room fire extinguisher. Model BB. Cockpit control and display.

Safe-T-Alert:

Carbon Monoxide alarm.

Mainship:

High water alarm – located in cockpit.

Kidde:

Fire extinguishers, type BC. One in cabin and two in cockpit.

Danforth:

Compass.

Life Jackets:

8 Type II Adult.

1 Type II Child.

1 Canine.

Basic Information

Category: Trawler

Sub Category: Sedan

Model Year: 2002

Year Built: 2002

Country: United States

Dimensions

LOA: 30' 0" (9.14m)

Beam: 10' 3" (3.12m)

Max Draft: 2' 11" (0.89m)

Clearance: 10' 0" (3.05m)

Speed, Capacities and Weight

Displacement: 10000 Pounds

Water Capacity: 38 Gallons

Fuel Capacity: 175 Gallons

Accommodations

Total Cabins: 1

Hull and Deck Information

Hull Material: Fiberglass

Engine Information

Manufacturer: Yanmar

Model: 4LHA-STP

Engine Type: Inboard

Fuel Type: Diesel

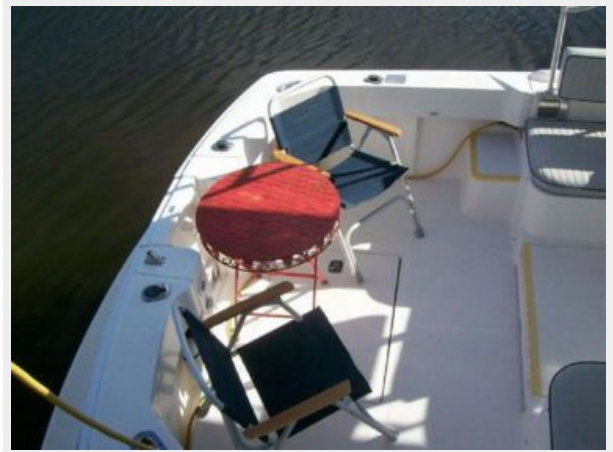
PHOTOS

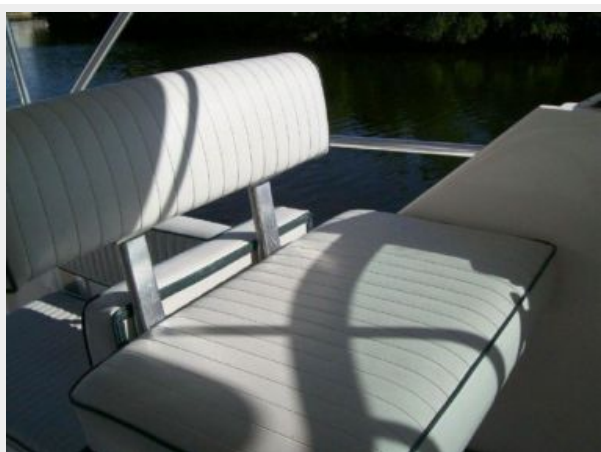




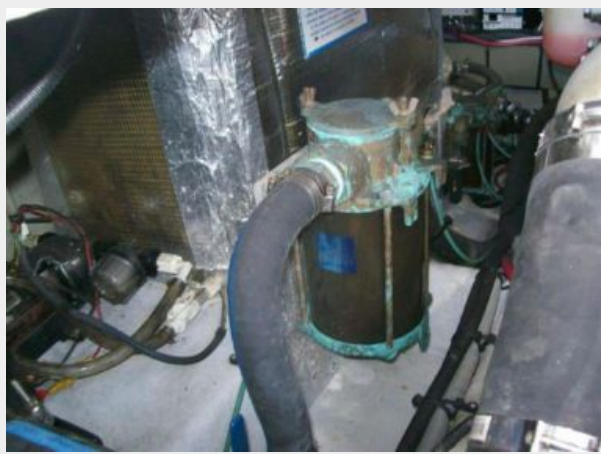














CONTACTS

Andrey Shestakov, leading yacht broker of the sales department of Shestakov Yacht Sales Inc. Shestakov Yacht Sales Inc., the official representative of the Miami/Fort Lauderdale FL headquarters.

Contact details

Email: andrey@shestakovyachtsales.com

Web: shestakovyachtsales.com/en/

Telephones

USA: +1(954)274-4435

Office hours

Monday – Saturday: **9:00 - 21:00** EDT

Sunday: **closed**

Address



Harbour Towne Marina, 850 NE 3rd St,
STE 213, Dania, FL 33004