

LA BELLE ROCHELLE — CRUISERS YACHTS



Builder: [Cruisers Yachts](#)

Year Built: 2003

Model: Cruiser

Price: PRICE ON APPLICATION

Location: United States

LOA: 44' 0" (13.41m)

Beam: 14' 0" (4.27m)

Min Draft: 3' 6" (1.07m)

Our experienced yacht broker, Andrey Shestakov, will help you choose and buy a yacht that best suits your needs **La Belle Rochelle — Cruisers Yachts** from our catalogue. Presently, at **Shestakov Yacht Sales Inc.**, we have a wide variety of yachts available on our sale's list. We also work in close contact with all the big yacht manufacturers from all over the world.

If you would like to buy a yacht **La Belle Rochelle — Cruisers Yachts** or would like help answering any questions concerning purchasing, selling or chartering a yacht, please call **+1(954)274-4435**

TABLE OF CONTENTS

TABLE OF CONTENTS	2
SPECIFICATIONS	4
Overview	4
Basic Information	4
Dimensions	4
Speed, Capacities and Weight	4
Accommodations	4
Hull and Deck Information	4
Engine Information	5
DETAILED INFORMATION	6
Manufacturer Provided Description	6
Salon	6
Galley	6
VIP Stateroom, Forward	6
VIP Ensuite Head	7
Master Stateroom Aft	7
Master Head Aft	7
Helm	7
Navigation and Electronics	7
Electrical System	7
Engine Room	8
Hull and deck	8
Cockpit	8
Broker Comments	8
Exclusions	8
Disclaimer	9
PHOTOS	10
CONTACTS	15

Contact details	15
Telephones	15
Office hours	15
Address	15

SPECIFICATIONS

Overview

La Belle Rochelle is offered for the first time by her original owner. She has been maintained in exceptional condition throughout this ownership and it shows. Very low hours on factory remanufactured Yanmar diesels, full eisenglass package and just detailed. Don't miss this opportunity to own the best 2 stateroom mid-size cruisers in her class.

Basic Information

Category: Cruiser	Model Year: 2003
Year Built: 2003	Country: United States
Vessel Top: Hardtop	

Dimensions

LOA: 44' 0" (13.41m)	Beam: 14' 0" (4.27m)
Min Draft: 3' 6" (1.07m)	

Speed, Capacities and Weight

Displacement: 24300 Pounds	Water Capacity: 100 Gallons
Holding Tank: 50 Gallons	Fuel Capacity: 400 Gallons

Accommodations

Total Cabins: 2

Hull and Deck Information

Hull Material: Fiberglass

Engine Information

Engines: 2

Manufacturer: Yanmar

Model: 6LY2A-STP

Engine Type: Inboard

Fuel Type: Diesel

DETAILED INFORMATION

Manufacturer Provided Description

With the 440 Express, Cruisers Yachts has once again created a remarkable class of yachts to which all others will aspire. The 440 offers top-of-the-line performance, stylish lines and an incredible full-size master stateroom amidships. From top to bottom, this sleek new express has been designed to garner worldwide attention. Topside, the 440 is everything an express should be. The helm station includes a custom helm seat, companion helm lounge and the latest in helm design and electronics. She also features the large, removable, wrap-around cockpit seating aft. The sun lounge/table, cockpit refrigerator or ice maker, cockpit shower and integrated swim platform will allow for many a wonderful memory on the water, and the yacht's overall spaciousness above deck will lend well to entertaining dockside. A full cockpit enclosure is standard. Below deck, a crescent-shaped convertible dinette/sofa curves along the starboard side of the yacht, a 20-inch flat-screen TV with combo VCR offers entertainment for lazy evenings on board, and the natural cherry wood interior creates a richness that pervades the entire living space. The well-thought-out galley to port includes a 110-volt microwave/convection oven, a large refrigerator/freezer, a double sink and plenty of storage for provisions. Forward, a large berth is set into the stateroom such that the space feels airy and comfortable. In addition, the stateroom has private access to the forward head with shower. To port of the companionway lies a door; behind that door lies the master stateroom, a living space that is truly unparalleled in express yachts of this size. An island berth provides the sleeping accommodations - the suite also includes separate head and shower compartments, with a sink and vanity between them in the changing area. There is also plenty of storage for longer cruises. The headroom is truly remarkable.

Salon

•Large curved sofa •Cherry wood cabinetry •2 - Cherry wood dinette tables •Storage below sofa seats •Clarion AM/FM/6 CD changer stereo •Toshiba flat screen TV •2 Portlites with screens •Air conditioned •Breaker panel •Carpet •Overhead hatch •Tables convert to berth

Galley

•Cherry wood cabinetry •Sharp Microwave/Convection oven •Full size Tundra refrigerator/freezer •Separate freezer •Corian type counter tops •Princess 2 burner electric stove •Keurig coffee maker •Abundant cabinet storage •Stainless steel sink with cover •Amtico Teak and Holley floor •Portlites with screen

VIP Stateroom, Forward

•Queen-size berth •Sharp TV and Blaupunkt DVD •Stereo speakers •(2) hanging lockers •Cherry wood cabinetry •Opening portlight with screen •Ensuite head, shower •Reading lights •SMXir AC controls •Privacy door

VIP Ensuite Head

•Located forward inside VIP stateroom •Abundant storage above and below •Vacu-flush head •Separate shower stall •Vanity with sink •Vanity mirror •Corian type counter top

Master Stateroom Aft

•Privacy door •Full beam stateroom •Queen size island berth •Custom bedspreads •Cherry wood cabinetry •Stereo speakers •Abundant storage •Ensuite private head •Privacy door •Reading lights •SMXir AC controls •Carpeted •Portlight with screen •Samsung TV/VCR •Central vacuum

Master Head Aft

•Vacu flush toilet, separate •Separate shower stall •Macerator system •Vanity with sink •Corian type counter tops •Vanity mirror •Storage above and below

Helm

•Yanmar controls •Full instrumentation •Rule high water alarm •Glendinning synchronizer •Fireboy •Bennett trim tab indicator •Keyless ignition system •Captains bucket seat •Stereo controls •Windlass controls •Remote spotlight controls •Trim tab controls •Tilt steering •Cup holders

Navigation and Electronics

•Furuno 32 mile Radar Open array •Furuno GPS NavNet C-Map NT •Northstar 958 GPS •Garmin 640 GPS •Simrad AP 20 Autopilot •Lowrance 3500 Digital Depth Sounder •Icom IC M 602 VHF Radio •Clarion stereo •Compass •Spotlight with remote

Electrical System

•Glendinning CABLEMASTER •Spare 50' Shore power cord •120/240 volt AC system •12 Volt DC system •Distribution panel •Battery condition gauge •9.0 KW Onan generator with 1340 hours •50 Amp service •Shore power inlet

Engine Room

•Twin Yanmar 440 Diesels - Port 15 hrs SMOH, Starboard 350 hrs SMOH •9 KW Onan Generator in sound shield with 1340 hours •Sea water strainers •Dripless shaft seals •Oil exchange system •Racor filters •Engine room lights •Powered engine hatch •Easy battery access •Fire Boy Fire Suppression system •Crash pumps

Hull and deck

•Tonneau cover in black sunbrella •Full aft enclosure in Eisenglass with black trim, stored •Front enclosure in Eisenglass with black trim, stored •Walk through windshield •Weaver davit's and arms •Foredeck Sunpad •Bottom Paint 8/14 •All batteries replaced 2013 •Nibral propellers, 4 balde •(2) Cruisair air conditioning units •A/C units 10,000 and 12,000 BTU's •Seaward hot water heater 11 gallons •Shore power inlet •Oil exchange system •Windlass anchor •Plow anchor w/ 50' of chain and 250' of rode •Bilge pumps (3) 2200 gph •Bennett trim tabs •Macerator waste pump-out •Navigation lights •GPS antenna •Dual horns •Port and Starboard side decks •SS Safety Handrails •SS Railings decks and bow •Rod holders •Extended swim platform •Spare props

Cockpit

•Windshield wiper spare motors •Full cockpit cover •Hardtop w/ skylight view panels •Transom entrance, exit door •Windshield opens, fore deck access •Built in step to windshield •Windshield wipers •Sliding cabin entry door with separate screen door •Adjustable helm chair •Full helm instrumentation •Ample lighting throughout •Helm wrap around companion seating fwd •Cocktail/dining table converts to sunbed, removable •Wet bar with sink and ice maker •Stereo speakers throughout •Drink holders throughout •Outlets 110 vac •Deck storage compartment •Deck access to engine room •Trunk storage at swim platform •Extended swim platform with folding ladder •Windshield wiper spare motors •Electronic engine room access thru aft deck

Broker Comments

La Belle Rochelle is offered for the first time by her original owner. She has been maintained in exceptional condition throughout this ownership and it shows. Very low hours on factory re-manufactured Yanmar diesels, full Eisenglass package and just detailed. Don't miss this opportunity to own the best 2 stateroom mid-size cruisers in her class.

Exclusions

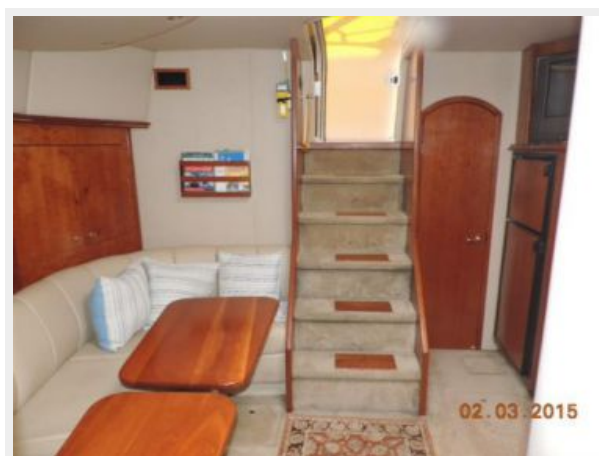
Owner's personal belongings.

Disclaimer

The Company offers the details of this vessel or yacht in good faith but cannot guarantee or warrant the accuracy of this information nor warrant the condition of the vessel. A buyer should instruct his representatives, agents, or his surveyors, to investigate such details as the buyer desires validated. This vessel or yacht is offered subject to prior sale, price change, or withdrawal without notice.

PHOTOS











CONTACTS

Andrey Shestakov, leading yacht broker of the sales department of Shestakov Yacht Sales Inc. Shestakov Yacht Sales Inc., the official representative of the Miami/Fort Lauderdale FL headquarters.

Contact details

Email: **andrey@shestakovyachtsales.com**

Web: shestakovyachtsales.com/en/

Telephones

USA: **+1(954)274-4435**

Office hours

Monday – Saturday: **9:00 - 21:00 EDT**

Sunday: **closed**

Address



Harbour Towne Marina, 850 NE 3rd St,
STE 213, Dania, FL 33004