

LA BELLE ROCHELLE — CRUISERS YACHTS



Судостроитель: [Cruisers Yachts](#)

Год постройки: 2003

Модель: Крейсер

Цена: ЦЕНА ЯХТЫ ПО ЗАПРОСУ

Местонахождение: United States

Длина общая: 44' 0" (13.41m)

Ширина: 14' 0" (4.27m)

Мин. осадка: 3' 6" (1.07m)

Купить **La Belle Rochelle — Cruisers Yachts** а также выбрать подходящую вам яхту из нашего каталога яхт вам поможет опытный яхтенный брокер Андрей Шестаков. На сегодняшний день компания **Shestakov Yacht Sales Inc.** имеет большое количество яхт в собственном списке продаж, а также тесно сотрудничает со всеми крупными яхтенными производителями по всему миру.

Для того чтобы купить яхту **La Belle Rochelle — Cruisers Yachts** а также проконсультироваться по любому вопросу связанному с покупкой, продажей, чартером яхт позвоните по телефону **+7(918)465-66-44**.

ОГЛАВЛЕНИЕ

ОГЛАВЛЕНИЕ	2
ХАРАКТЕРИСТИКИ	4
Обзор	4
Основная информация	4
Размеры	4
Скорость, вместимость и масса	4
Размещение	4
Корпус и палуба	4
Информация о двигателе	5
ПОДРОБНОЕ ОПИСАНИЕ	6
Manufacturer Provided Description	6
Salon	6
Galley	6
VIP Stateroom, Forward	6
VIP Ensuite Head	7
Master Stateroom Aft	7
Master Head Aft	7
Helm	7
Navigation and Electronics	7
Electrical System	7
Engine Room	8
Hull and deck	8
Cockpit	8
Broker Comments	8
Исключения	8
Отказ от ответственности	9
ФОТОГРАФИИ	10
КОНТАКТЫ	15

Контактная информация	15
Телефоны	15
Время работы	15
Адрес	15

ХАРАКТЕРИСТИКИ

Обзор

La Belle Rochelle is offered for the first time by her original owner. She has been maintained in exceptional condition throughout this ownership and it shows. Very low hours on factory remanufactured Yanmar diesels, full eisenglass package and just detailed. Don't miss this opportunity to own the best 2 stateroom mid-size cruisers in her class.

Основная информация

Тип судна: Крейсер

Модельный год: 2003

Год постройки: 2003

Страна: United States

Верх: Hardtop

Размеры

Длина общая: 44' 0" (13.41m)

Ширина: 14' 0" (4.27m)

Мин. осадка: 3' 6" (1.07m)

Скорость, вместимость и масса

Водоизмещение: 24300 Pounds

Вместимость воды: 100 Gallons

Вместимость сточного бака: 50 Gallons

Объем топливного бака: 400 Gallons

Размещение

Всего кают: 2

Корпус и палуба

Материал корпуса: Fiberglass

Информация о двигателе

Двигатели: 2

Производитель: Yanmar

Модель: 6LY2A-STP

Тип двигателя: Inboard

Тип топлива: Diesel

ПОДРОБНОЕ ОПИСАНИЕ

Manufacturer Provided Description

With the 440 Express, Cruisers Yachts has once again created a remarkable class of yachts to which all others will aspire. The 440 offers top-of-the-line performance, stylish lines and an incredible full-size master stateroom amidships. From top to bottom, this sleek new express has been designed to garner worldwide attention. Topside, the 440 is everything an express should be. The helm station includes a custom helm seat, companion helm lounge and the latest in helm design and electronics. She also features the large, removable, wrap-around cockpit seating aft. The sun lounge/table, cockpit refrigerator or ice maker, cockpit shower and integrated swim platform will allow for many a wonderful memory on the water, and the yacht's overall spaciousness above deck will lend well to entertaining dockside. A full cockpit enclosure is standard. Below deck, a crescent-shaped convertible dinette/sofa curves along the starboard side of the yacht, a 20-inch flat-screen TV with combo VCR offers entertainment for lazy evenings on board, and the natural cherry wood interior creates a richness that pervades the entire living space. The well-thought-out galley to port includes a 110-volt microwave/convection oven, a large refrigerator/freezer, a double sink and plenty of storage for provisions. Forward, a large berth is set into the stateroom such that the space feels airy and comfortable. In addition, the stateroom has private access to the forward head with shower. To port of the companionway lies a door; behind that door lies the master stateroom, a living space that is truly unparalleled in express yachts of this size. An island berth provides the sleeping accommodations - the suite also includes separate head and shower compartments, with a sink and vanity between them in the changing area. There is also plenty of storage for longer cruises. The headroom is truly remarkable.

Salon

•Large curved sofa •Cherry wood cabinetry •2 - Cherry wood dinette tables •Storage below sofa seats •Clarion AM/FM/6 CD changer stereo •Toshiba flat screen TV •2 Portlites with screens •Air conditioned •Breaker panel •Carpet •Overhead hatch •Tables convert to berth

Galley

•Cherry wood cabinetry •Sharp Microwave/Convection oven •Full size Tundra refrigerator/freezer •Separate freezer •Corian type counter tops •Princess 2 burner electric stove •Keurig coffee maker •Abundant cabinet storage •Stainless steel sink with cover •Amtico Teak and Holley floor •Portlites with screen

VIP Stateroom, Forward

•Queen-size berth •Sharp TV and Blaupunkt DVD •Stereo speakers •(2) hanging lockers •Cherry wood cabinetry •Opening portlite with screen •Ensuite head, shower •Reading lights •SMXir AC controls •Privacy door

VIP Ensuite Head

•Located forward inside VIP stateroom •Abundant storage above and below •Vacu-flush head •Separate shower stall •Vanity with sink •Vanity mirror •Corian type counter top

Master Stateroom Aft

•Privacy door •Full beam stateroom •Queen size island berth •Custom bedspreads •Cherry wood cabinetry •Stereo speakers •Abundant storage •Ensuite private head •Privacy door •Reading lights •SMXir AC controls •Carpeted •Portlite with screen •Samsung TV/VCR •Central vacuum

Master Head Aft

•Vacu flush toilet, separate •Separate shower stall •Macerator system •Vanity with sink •Corian type counter tops •Vanity mirror •Storage above and below

Helm

•Yanmar controls •Full instrumentation •Rule high water alarm •Glendinning synchronizer •Fireboy •Bennett trim tab indicator •Keyless ignition system •Captains bucket seat •Stereo controls •Windlass controls •Remote spotlight controls •Trim tab controls •Tilt steering •Cup holders

Navigation and Electronics

•Furuno 32 mile Radar Open array •Furuno GPS NavNet C-Map NT •Northstar 958 GPS •Garmin 640 GPS •Simrad AP 20 Autopilot •Lowrance 3500 Digital Depth Sounder •Icom IC M 602 VHF Radio •Clarion stereo •Compass •Spotlight with remote

Electrical System

•Glendinning Cablemaster •Spare 50' Shore power cord •120/240 volt AC system •12 Volt DC system •Distribution panel •Battery condition gauge •9.0 KW Onan generator with 1340 hours •50 Amp service •Shore power inlet

Engine Room

•Twin Yanmar 440 Diesels - Port 15 hrs SMOH, Starboard 350 hrs SMOH •9 KW Onan Generator in sound shield with 1340 hours •Sea water strainers •Dripless shaft seals •Oil exchange system •Racor filters •Engine room lights •Powered engine hatch •Easy battery access •Fire Boy Fire Suppression system •Crash pumps

Hull and deck

•Tonneau cover in black sunbrella •Full aft enclosure in Eisenglass with black trim, stored •Front enclosure in Eisenglass with black trim, stored •Walk through windshield •Weaver davit's and arms •Foredeck Sunpad •Bottom Paint 8/14 •All batteries replaced 2013 •Nibral propellers, 4 balde •(2) Cruisair air conditioning units •A/C units 10,000 and 12,000 BTU's •Seaward hot water heater 11 gallons •Shore power inlet •Oil exchange system •Windlass anchor •Plow anchor w/ 50' of chain and 250' of rode •Bilge pumps (3) 2200 gph •Bennett trim tabs •Macerator waste pump-out •Navigation lights •GPS antenna •Dual horns •Port and Starboard side decks •SS Safety Handrails •SS Railings decks and bow •Rod holders •Extended swim platform •Spare props

Cockpit

•Windshield wiper spare motors •Full cockpit cover •Hardtop w/ skylight view panels •Transom entrance, exit door •Windshield opens, fore deck access •Built in step to windshield •Windshield wipers •Sliding cabin entry door with separate screen door •Adjustable helm chair •Full helm instrumentation •Ample lighting throughout •Helm wrap around companion seating fwd •Cocktail/dining table converts to sunbed, removable •Wet bar with sink and ice maker •Stereo speakers throughout •Drink holders throughout •Outlets 110 vac •Deck storage compartment •Deck access to engine room •Trunk storage at swim platform •Extended swim platform with folding ladder •Windshield wiper spare motors •Electronic engine room access thru aft deck

Broker Comments

La Belle Rochelle is offered for the first time by her original owner. She has been maintained in exceptional condition throughout this ownership and it shows. Very low hours on factory re-manufactured Yanmar diesels, full Eisenglass package and just detailed. Don't miss this opportunity to own the best 2 stateroom mid-size cruisers in her class.

Исключения

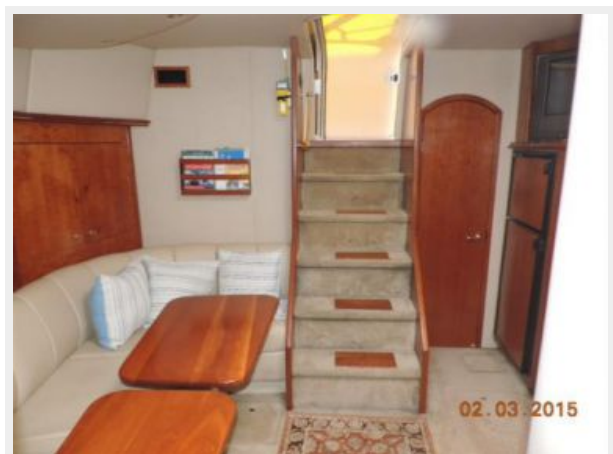
При продаже яхты исключаются личные вещи владельца.

Отказ от ответственности

Компания предоставляет описание судна или яхты добросовестно, но не может гарантировать точность этой информации, а также не ручается за техническое состояние. Покупатель должен проинструктировать своих агентов или оценщиков исследовать представленную информацию более подробно, по собственному желанию. Продажа судна или яхты, изменение цены или снятие с продажи будет происходить без предварительного уведомления.

ФОТОГРАФИИ











КОНТАКТЫ

Андрей Шестаков (Andrey Shestakov) – ведущий яхтенный брокер отдела продаж яхт и судов компании Shestakov Yacht Sales Inc. Официальный представитель Shestakov Yacht Sales Inc. для русскоговорящих клиентов в центральном офисе компании в Майами/Форт Лодердейл/Флорида/США.

Контактная информация

Email: andrey@shestakovyachtsales.com

Web: shestakovyachtsales.com

Телефоны

Краснодарский край: **+7(918)465-66-44**

США, Майами, Флорида: **+1(954)274-4435**

Время работы

Понедельник – Суббота: **9:00 - 21:00**
EDT

Воскресенье: **Закрето**

Адрес



Harbour Towne Marina, 850 NE 3rd St,
STE 213, Dania, FL 33004