

## GOING YAHWEH — OCEAN ALEXANDER



**Builder:** OCEAN ALEXANDER

**Year Built:** 1997

**Model:** Trawler

**Price:** PRICE ON APPLICATION

**Location:** United States

**LOA:** 44' 0" (13.41m)

**Beam:** 13' 11" (4.24m)

**Min Draft:** 3' 2" (0.97m)

**Max Draft:** 3' 2" (0.97m)

Our experienced yacht broker, Andrey Shestakov, will help you choose and buy a yacht that best suits your needs **Going Yahweh — OCEAN ALEXANDER** from our catalogue. Presently, at Shestakov Yacht Sales Inc., we have a wide variety of yachts available on our sale's list. We also work in close contact with all the big yacht manufacturers from all over the world.

If you would like to buy a yacht **Going Yahweh — OCEAN ALEXANDER** or would like help answering any questions concerning purchasing, selling or chartering a yacht, please call **+1(954)274-4435**

---

# TABLE OF CONTENTS

---

TABLE OF CONTENTS	2
SPECIFICATIONS	7
Overview	7
Basic Information	8
Dimensions	8
Speed, Capacities and Weight	8
Accommodations	9
Hull and Deck Information	9
Engine Information	9
DETAILED INFORMATION	10
Vessel Walk Through	10
Salon	10
Lower Helm	11
Galley	11
Dinette	12
Master Aft Cabin	12
Master Head	12
Guest Cabin Forward	13
Guest Head	13
Cockpit	13
Sun Deck	14
Fly Bridge Electronics & Controls	14
Flybridge	15
Deck	15
Engine Room & Mechanical	16
Electrical	16
Brokers Remarks	17
Disclaimer	17

Exclusions	17
Disclaimer	17
PHOTOS	18
Salon	18
Galley	18
Master Stateroom	18
Flybridge Helm	18
Salon	18
Salon	18
Salon	19
Salon	19
Galley	19
Dinette	19
Master Stateroom	19
Master Stateroom	19
Master Stateroom	20
Master Stateroom	20
Master Head	20
Master Stateroom	20
Master Shower	21
Guest Cabin	21
Guest Cabin	21
Guest Head	21
Electrical Panel	22
Electrical Panel	22
Lower Helm Engine Instrumentation	22
Lower Helm Generator Instruments	22
Lower Helm VHF & Spotlight Control	22
Lower Helm	22

---

Flybridge Helm	23
Flybridge Helm	23
Wesmar Bow Thruster	23
Flybridge Helm Seats	23
Flybridge Helm Seats	23
Flybridge Helm Bench Seat	23
Solar Panels	24
Flybridge Covers	24
Flybridge Covers	24
Flybridge Covers	24
Flybridge Instrument Covers	24
Sundeck	24
Sundeck	25
Sundeck	25
Sundeck	25
Sundeck Sun Shades	25
Dinghy & Cockpit	25
Dinghy & Cockpit	25
Cockpit	26
Cockpit	26
Side Deck Aft	26
Side Deck Forward	26
Foredeck	26
Foredeck from Flybridge	26
Foredeck	27
Foredeck Looking Aft	27
Propane Grill	27
Propane Grill	27
Propane Box	27

---

Propane Box	27
Dinghy & Freedom Lift	28
Dinghy & Lift Control	28
Boarding Ladder	28
Launch the Dinghy	28
Cockpit Shower	28
Cockpit Shower	28
Starboard Cummins Reman	29
Port Cummins Reman	29
Engine Hour Meter	29
5 Way Oil Change System	29
Port Side AC Compressors	29
Starboard Side Battery Boxes	29
Genset Sound Shield	30
Westerbeke	30
Battery Charger	30
Raw Water Strainers	30
400 Gallon Aluminum Fuel Tank	30
Hinckley Imron Paint	31
Hinckley Imron Paint	31
Profile	31
Profile	31
Profile	31
Profile	31
Profile	32
CONTACTS	33
Contact details	33
Telephones	33
Office hours	33

---

Address

33

---

# SPECIFICATIONS

---

## Overview

---

**Absolutely Stunning Turn Key Cruiser**

**Proven Ed Monk Design**

**Long Keel for Tracking and Protection**

**Twin Cummins Factory Reman w/320 Hrs. (2011)**

**Twin 6BTA5.9 315 HP Reliable, Economical Diesel**

**Fresh Water Boat until 2008**

**Hinckley Imron Paint (2011)**

**Westerbeke Diesel Generator 1020 Hrs.**

**Follow-Me SAT/TV**

**Lower Helm & Fly Bridge Helm**

**2 Stateroom, 2 Head, Aft Cabin Layout**

**Centerline Queen Pedestal Bed in Master**

**Sundeck Motor Yacht with Cockpit**

**Sundeck Hard Top**

**Sundeck Privacy/Sun Screen (new 8/14)**

**Fly Bridge w/Bimini & Enclosure**

**Freedom Lift Hydraulic Dingy Lift 10'3" Rigid Jolly Boat 1998 Dingy w/15HP Yamaha**

**Wesmar Bow Thruster**

**Garmin Electronics**

**Garmin GPSmap 7212 Touchscreen Chart Plotter**

**And Much More!**

**Beautiful boat! Fresh Imron paint from the Hinckley yard (2011) and factory remanufactured Cummins diesels (2011) with low, low hours. She spent the first 10 years of her life in fresh water, and has received obvious excellent care by her current liveaboard**

and previous owners. This well-maintained yacht is truly exceptional for her age and price and offers a rare opportunity for anyone looking for an excellent boat for cruising, living aboard, or just relaxing!

With her comfortable double cabin layout and pedigree Ed Monk design, she is perfect for living aboard or cruising. Her 18'6" bridge clearance, shoal draft, full walk-around side decks, cockpit, solar panels, and propane cooktop make her an ideal choice for the ICW, the Bahamas, Keys, or the loop. She is exceptionally well maintained by her live-aboard owners.

## Basic Information

---

**Category:** Trawler

**Model Year:** 1998

**Year Built:** 1997

**Country:** United States

**Registration #:** 1062315

**Vessel Top:** Enclosed

**Cockpit:** Yes

## Dimensions

---

**LOA:** 44' 0" (13.41m)

**Beam:** 13' 11" (4.24m)

**Min Draft:** 3' 2" (0.97m)

**Max Draft:** 3' 2" (0.97m)

## Speed, Capacities and Weight

---

**Displacement:** 27000 Pounds

**Water Capacity:** 150 Gallons

**Holding Tank:** 68 Gallons

**Fuel Capacity:** 300 Gallons



---

## Accommodations

---

**Total Cabins:** 2

**Total Berths:** 2

**Sleeps:** 4

**Total Heads:** 2

---

## Hull and Deck Information

---

**Hull Material:** Fiberglass

**Deck Material:** Fiberglass Sandwich

**Hull Configuration:** Modified Deep Vee

**Hull Color:** White

---

## Engine Information

---

**Manufacturer:** Cummins

**Model:** 6BTA 5.9

**Fuel Type:** Diesel

---

# DETAILED INFORMATION

---

## Vessel Walk Through

---

Lush teak cabinetry provides ample storage throughout this well designed vessel. Under custom fit and bound carpeting (new Feb 2014) is beautiful teak parquet flooring. The 2 stateroom 2 head layout features a full beam aft master stateroom with ensuite head and separate shower. From the aft stateroom, the bright and open Salon is forward and up a few steps. The salon settee has new cushions, upholstery and a leather recliner (new Sept 2014). There is a lower helm station forward to starboard. Moving forward, the galley and dinette are forward and down a few steps. The windshield offers plenty of light and a spacious feeling in this area. The guest cabin, now being used as an office, is forward and features a larger V-Berth with a filler and private head.

The cockpit with swim platform, transom door, and Freedom Lift allow you to board the boat conveniently even with the dingy on board. When cruising, the cockpit is ideal for using the dingy as well as for fishing, swimming, snorkeling, and just relaxing.

The sundeck with hard top and new sun screens (Aug 2014) provides the ultimate comfortable outdoor living space. Solar panels are mounted on the hard top.

The fly bridge with radar arch offers additional seating, helm seat, mate seat, and modern electronics. The bimini, full enclosure, and custom covers are all in excellent condition.

Wide side decks and oversized stainless steel railing offer safe access to the foredeck.

## Salon

---

The bright and open salon offers excellent visibility from the lower helm and a panoramic view through large windows.

L-Shaped Settee (new cushions & upholstery 9/14)

Custom Bound Carpeting (new 2/14)

Teak Parquet Floors under Carpet

U-Line Ice Maker (new 3/14)

Fusion Sound System with Blue Tooth (new 8/14)

Fusion Stereo Remote on Sundeck (new 8/14)

JBL Speakers in Radar Arch (new 8/14)

Salon Speakers

Vision 32" Flat Screen TV

Follow-Me SAT/TV W/DVD

Custom Shades

Opening Windows

Teak Cabinets with Quality Workmanship

Hidden Bar

---

## Lower Helm

---

The functional lower helm wastes no space in the comfortable salon.

AC/DC Panel with Clear Plexi-glass Doors

Tank Tender Tank Gauge- Fuel and Water

Beautiful Teak Steering Wheel

Morse Dual Lever Controls

Wesmar Bow Thruster Control

Robertson AP 300X Autopilot Control

ACR Spot Light Control

Standard Horizon VHF

Full Engine Instrumentation

Fire Boy Fire System (Recertified 6/14)

Danforth Constellation Compass

---

## Galley

---

The galley, with the windshield above and an opening stainless steel port, is bright and open. Fine teak cabinets provide generous storage.

Princess 3 Burner Propane Stove

Double Stainless Steel Sink

---

Salt Water Spigot at Galley Sink

LG Convection Microwave Oven (new 6/14)

Generous Storage in Fine Teak Cabinetry

12v/110v Refrigerator w/ Freezer

Combination Smoke/CO Alarm

## Dinette

---

To starboard, opposite the galley, the dinette is bright and open with the windshield above and an opening stainless steel.

Comfortable Dining for 4

Storage Under Seats

Stainless Steel Opening Port

## Master Aft Cabin

---

The full beam master stateroom with queen size walk-around pedestal bed provides the comfort and storage for long term cruising or living aboard.

Queen Size Walk-Around Pedestal Bed

Two Large Hanging Lockers

Opening Hatch in Transom

Side Windows w/Custom Shades

SMX II A/C Control

Sony 23" Flat Screen TV with DVD

Combination Smoke/CO Alarm

Ensuite Head & Shower

## Master Head

---

The ensuite master head is bright and spacious with a large vanity mirror and separate shower.

---

## Guest Cabin Forward

---

Large V-berth with Filler

Cedar Lined Hanging Locker

Multi-shelf Storage Locker

Multiple Storage Cabinets & Drawers

Foredeck Hatch

Private Head

(2) Stainless Steel Opening Ports

Combination Smoke/CO Alarm

---

## Guest Head

---

Bright and spacious private head.

---

## Cockpit

---

The cockpit with swim platform, transom door, and Freedom Lift allows you to board the boat conveniently even with the dingy on board. When cruising, the cockpit is ideal for using the dingy as well as for fishing, swimming, snorkeling, etc.

Swim Platform

Freedom Lift Hydraulic Dingy Lift 10'3" Rigid Jolly Boat 1998 Dingy w/15HP Yamaha

Dingy Cover

Transom Door

(2) Rod Holders

(1) Rocket Launcher

Stainless Steel Magma Propane Grill

Propane Locker with Two Tanks (Stove and Grill)

Hot & Cold Fresh Water Shower

(2) Hauser Pipes/Cleats in Quarters

(2) Hauser Pipes/Cleats in Transom

Marquipt Boarding Ladder Stored on Brackets

Hatch to Master Stateroom

Throw Ring

Teak Steps to Sundeck (new 8/14)

American Flag & Varnished Flag Pole

---

## Sun Deck

---

The sundeck with hard top and new sun screens (Aug 2014) provides the ultimate comfortable outdoor living space.

Sun Deck w/Hard Top

Sun Deck Privacy/Sun Shades (new 8/14)

Teak Chair & Table

(2) Deck Chairs

Large Storage Locker

Teak Steps to Fly Bridge (new 8/14)

---

## Fly Bridge Electronics & Controls

---

Full Engine Instrumentation

Wesmar Bow Thruster Control

Garmon GPSmap 7212 Color Plotter

Garmin GPSmap 541S Color Plotter

Furuno 48 Mile Radar

Robertson AP 300X Autopilot Control

Garmin VHF 100

Standard Horizon Ram Mic VHF

Morse Dual Lever Controls

ACR Spot Light Control

Danforth Compass

Stainless Steel Destroyer Type Wheel

High Water Alarm

12v Outlet

## **Flybridge**

---

The flybridge with radar arch offers additional seating, helm seat, mate seat, and modern electronics. The bimini, full enclosure, and custom covers are all in excellent condition.

Tracy International Helm and Mate Seats

Bimini Top & Enclosure in Excellent Condition

Venturi Windshield

Additional Seating

Storage Lockers

Full Seat & Helm Covers

Radar Arch for Electronics

Follow-Me SAT/TV

## **Deck**

---

Safe access is offered to the foredeck by wide side decks and oversized railings.

Wide side decks

Oversized Stainless Steel Railing

New Forward Hatch Canvas Cover (new 8/14)

New Dual Trumpet Ungaro Electric Horn (new 8/14)

Fender Holders

Bow Pulpit

Vertical Windlass

Windlass Foot Switch Control

Stainless Steel Plow Anchor

Aluminum Fortress Anchor

Mantus Anchor Bridle

---

## Engine Room & Mechanical

---

Twin Cummins Re-manufactured Cummins Installed 2011

Twin 6BTA5.9 315 HP w/ 320 Hours

Fresh Water Cooling

Bronze Raw Water Strainers (2) 16,000 BTU Remote A/C Compressors (1 new March 2015)

Reverso 5-Way Oil Change System (new 6/13)

New Sanitation Hoses for Aft Head (new 5/14)

New Port Engine Raw Water Pump and Hose (new 9/13)

New Port Engine Raw Water Sea Cock (new 9/13)

New Black Water Holding Tank Pump (new 1/14)

Rebuilt Starboard Engine Alternator (11/13)

Rebuilt Port Engine Alternator (3/14)

New Racor 1000FG Fuel Filter Assemblies - Port and Starboard (new 1/14/)

New AC Pump and Manifold (new 6/14)

New Fresh Water Pump (new 6/14)

---

## Electrical

---

AC/DC Panel at Lower Helm

Westerbeke 8.0 KW Generator



(2) 50 AMP Shore Cords

McCarron VMI Battery Charger

(5) 8D Gel Batteries

(2) New Batteries 12/13, (1) New Battery 2/14

---

## Brokers Remarks

---

The 44 Ocean Alexander Sundeck Cockpit MY is an exceptional cruising yacht by Ed Monk who is renowned as one of the top designers for this type of yacht. Her twin engine hull with a long keel provides excellent tracking and partial protection for running gear. The cockpit, sundeck, fly bridge, with aft cabin layout offers all the amenities required for comfortable cruising, entertaining, and living aboard.

In terms of condition, she is top of the line! Her flawless paint and Cummins factory re-manufactured diesel engines installed in 2011 set her apart from all the other boats you will look at. Inside she is neat as a pin and equally well maintained by her dedicated owners who are full time live aboard cruisers. This yacht will not disappoint! Call for an appointment.

---

## Disclaimer

---

The Company offers the details of this vessel in good faith but cannot guarantee or warrant the accuracy of this information nor warrant the condition of the vessel. A buyer should instruct his agents, or his surveyors, to investigate such details as the buyer desires validated. This vessel is offered subject to prior sale, price change, or withdrawal without notice.

---

## Exclusions

---

Owner's personal belongings.

---

## Disclaimer

---

The Company offers the details of this vessel or yacht in good faith but cannot guarantee or warrant the accuracy of this information nor warrant the condition of the vessel. A buyer should instruct his representatives, agents, or his surveyors, to investigate such details as the buyer desires validated. This vessel or yacht is offered subject to prior sale, price change, or withdrawal without notice.

# PHOTOS

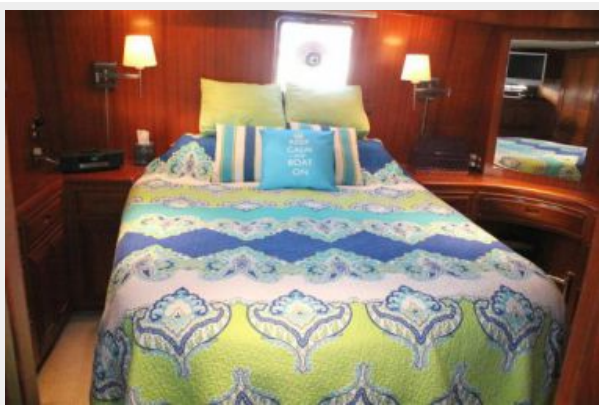
**Salon**



**Galley**



**Master Stateroom**



**Flybridge Helm**



**Salon**



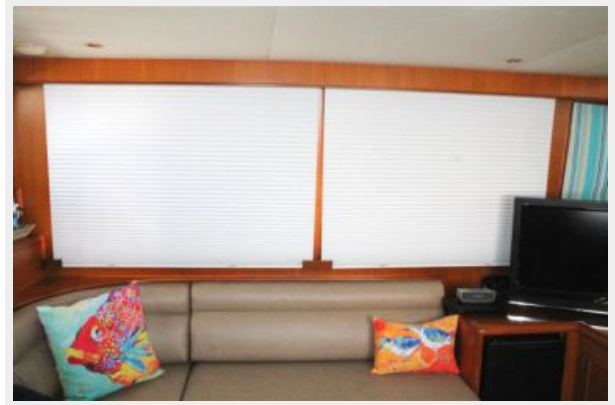
**Salon**



Salon



Salon



Galley



Dinette



Master Stateroom



Master Stateroom



**Master Stateroom**



**Master Stateroom**



**Master Stateroom**



**Master Head**



**Master Shower**



**Guest Cabin**



**Guest Cabin**



**Guest Head**





**Flybridge Helm**



**Flybridge Helm**



**Wesmar Bow Thruster**



**Flybridge Helm Seats**



**Flybridge Helm Seats**



**Flybridge Helm Bench Seat**



**Solar Panels**



**Flybridge Covers**



**Flybridge Covers**



**Flybridge Covers**



**Flybridge Instrument Covers**



**Sundeck**





**Sundeck**



**Sundeck**



**Sundeck**



**Sundeck Sun Shades**



**Dinghy & Cockpit**



**Dinghy & Cockpit**



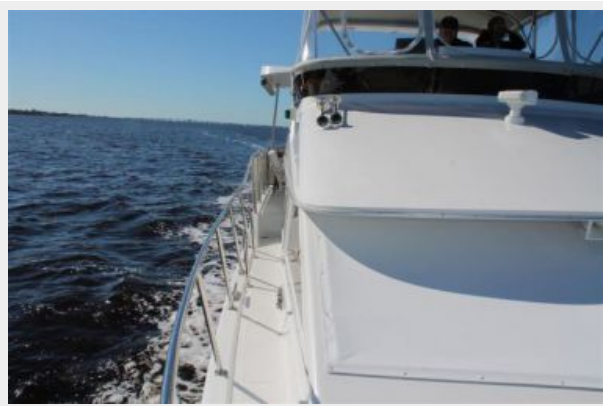
**Cockpit**



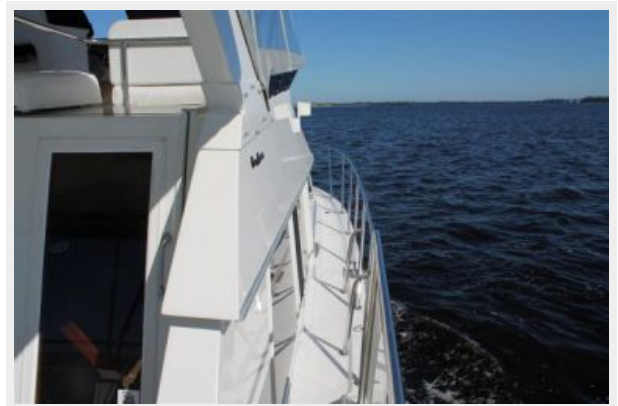
**Cockpit**



**Side Deck Aft**



**Side Deck Forward**



**Foredeck**



**Foredeck from Flybridge**



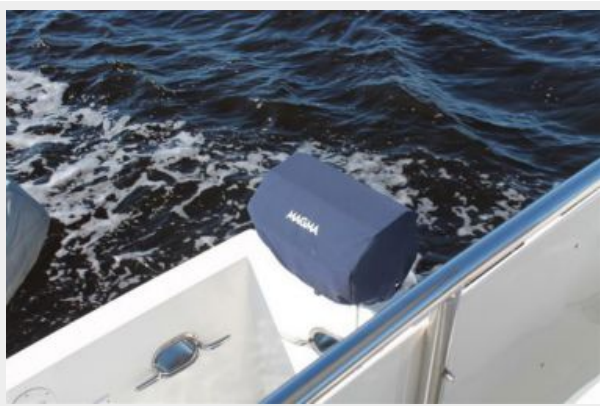
**Foredeck**



**Foredeck Looking Aft**



**Propane Grill**



**Propane Grill**



**Propane Box**



**Propane Box**



### Dinghy & Freedom Lift



### Dinghy & Lift Control



### Launch the Dinghy



### Boarding Ladder



### Cockpit Shower



### Cockpit Shower



**Starboard Cummins Reman**



**Port Cummins Reman**



**Engine Hour Meter**



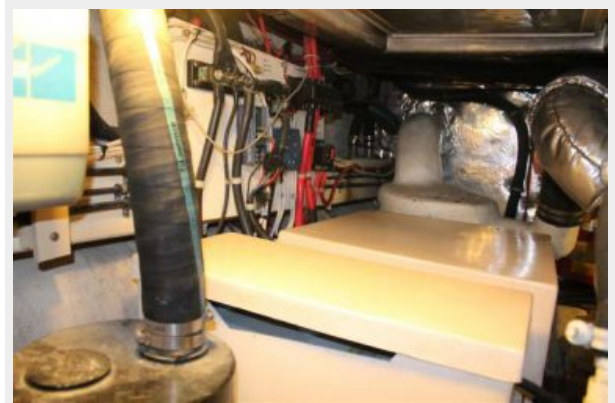
**5 Way Oil Change System**



**Port Side AC Compressors**



**Starboard Side Battery Boxes**



**Genset Sound Shield**



**Westerbeke**



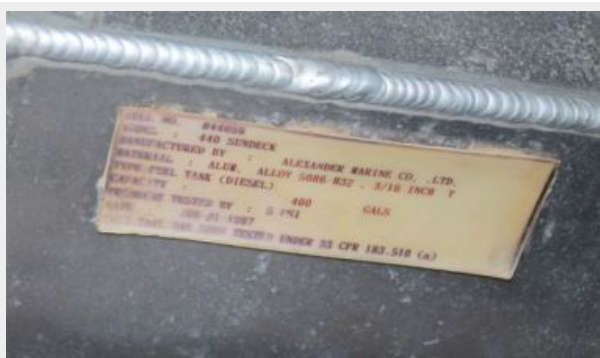
**Battery Charger**



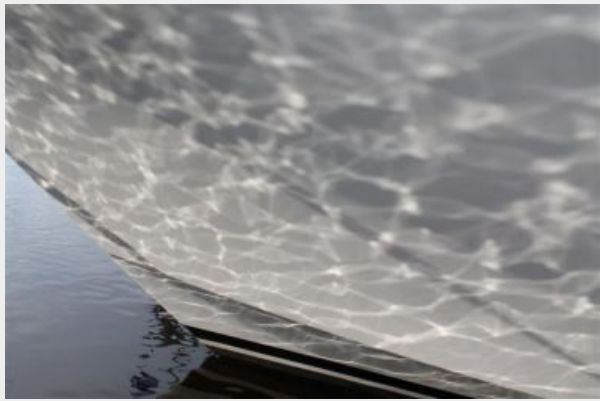
**Raw Water Strainers**



**400 Gallon Aluminum Fuel Tank**



### Hinckley Imron Paint



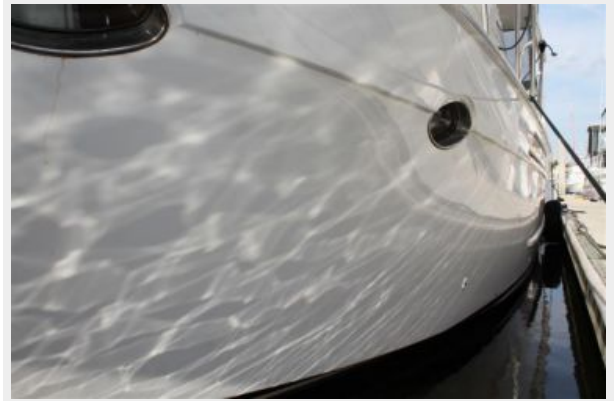
Profile



Profile



### Hinckley Imron Paint



Profile



Profile



## Profile





# CONTACTS

---

Andrey Shestakov, leading yacht broker of the sales department of Shestakov Yacht Sales Inc. Shestakov Yacht Sales Inc., the official representative of the Miami/Fort Lauderdale FL headquarters.

## Contact details

---

Email: [andrey@shestakovyachtsales.com](mailto:andrey@shestakovyachtsales.com)

Web: [shestakovyachtsales.com/en/](http://shestakovyachtsales.com/en/)

## Telephones

---

USA: +1(954)274-4435

## Office hours

---

Monday – Saturday: **9:00 - 21:00** EDT

Sunday: **closed**

## Address

---



Harbour Towne Marina, 850 NE 3rd St,  
STE 213, Dania, FL 33004