

GOING YAHWEH — OCEAN ALEXANDER



Судостроитель: OCEAN ALEXANDER

Год постройки: 1997

Модель: Траулер

Цена: **ЦЕНА ЯХТЫ ПО ЗАПРОСУ**

Местонахождение: United States

Длина общая: 44' 0" (13.41m)

Ширина: 13' 11" (4.24m)

Мин. осадка: 3' 2" (0.97m)

Макс. осадка: 3' 2" (0.97m)

Купить **Going Yahweh — OCEAN ALEXANDER** а также выбрать подходящую вам яхту из нашего каталога яхт вам поможет опытный яхтенный брокер Андрей Шестаков. На сегодняшний день компания **Shestakov Yacht Sales Inc.** имеет большое количество яхт в собственном списке продаж, а также тесно сотрудничает со всеми крупными яхтенными производителями по всему миру.

Для того чтобы купить яхту **Going Yahweh — OCEAN ALEXANDER** а также проконсультироваться по любому вопросу связанному с покупкой, продажей, чартером яхт позвоните по телефону **+7(918)465-66-44**.

ОГЛАВЛЕНИЕ

ОГЛАВЛЕНИЕ	2
ХАРАКТЕРИСТИКИ	7
Обзор	7
Основная информация	8
Размеры	8
Скорость, вместимость и масса	8
Размещение	9
Корпус и палуба	9
Информация о двигателе	9
ПОДРОБНОЕ ОПИСАНИЕ	10
Vessel Walk Through	10
Salon	10
Lower Helm	11
Galley	11
Dinette	12
Master Aft Cabin	12
Master Head	12
Guest Cabin Forward	13
Guest Head	13
Cockpit	13
Sun Deck	14
Fly Bridge Electronics & Controls	14
Flybridge	15
Deck	15
Engine Room & Mechanical	16
Electrical	16
Brokers Remarks	17
Disclaimer	17

Исключения	17
Отказ от ответственности	17
ФОТОГРАФИИ	18
Salon	18
Galley	18
Master Stateroom	18
Flybridge Helm	18
Salon	18
Salon	18
Salon	19
Salon	19
Galley	19
Dinette	19
Master Stateroom	19
Master Stateroom	19
Master Stateroom	20
Master Stateroom	20
Master Head	20
Master Stateroom	20
Master Shower	21
Guest Cabin	21
Guest Cabin	21
Guest Head	21
Electrical Panel	22
Electrical Panel	22
Lower Helm Engine Instrumentation	22
Lower Helm Generator Instruments	22
Lower Helm VHF & Spotlight Control	22
Lower Helm	22

Flybridge Helm	23
Flybridge Helm	23
Wesmar Bow Thruster	23
Flybridge Helm Seats	23
Flybridge Helm Seats	23
Flybridge Helm Bench Seat	23
Solar Panels	24
Flybridge Covers	24
Flybridge Covers	24
Flybridge Covers	24
Flybridge Instrument Covers	24
Sundeck	24
Sundeck	25
Sundeck	25
Sundeck	25
Sundeck Sun Shades	25
Dinghy & Cockpit	25
Dinghy & Cockpit	25
Cockpit	26
Cockpit	26
Side Deck Aft	26
Side Deck Forward	26
Foredeck	26
Foredeck from Flybridge	26
Foredeck	27
Foredeck Looking Aft	27
Propane Grill	27
Propane Grill	27
Propane Box	27

Propane Box	27
Dinghy & Freedom Lift	28
Dinghy & Lift Control	28
Boarding Ladder	28
Launch the Dinghy	28
Cockpit Shower	28
Cockpit Shower	28
Starboard Cummins Reman	29
Port Cummins Reman	29
Engine Hour Meter	29
5 Way Oil Change System	29
Port Side AC Compressors	29
Starboard Side Battery Boxes	29
Genset Sound Shield	30
Westerbeke	30
Battery Charger	30
Raw Water Strainers	30
400 Gallon Aluminum Fuel Tank	30
Hinckley Imron Paint	31
Hinckley Imron Paint	31
Profile	31
Profile	31
Profile	31
Profile	31
Profile	32
КОНТАКТЫ	33
Контактная информация	33
Телефоны	33
Время работы	33

Адрес

33

ХАРАКТЕРИСТИКИ

Обзор

Absolutely Stunning Turn Key Cruiser

Proven Ed Monk Design

Long Keel for Tracking and Protection

Twin Cummins Factory Reman w/320 Hrs. (2011)

Twin 6BTA5.9 315 HP Reliable, Economical Diesel

Fresh Water Boat until 2008

Hinckley Imron Paint (2011)

Westerbeke Diesel Generator 1020 Hrs.

Follow-Me SAT/TV

Lower Helm & Fly Bridge Helm

2 Stateroom, 2 Head, Aft Cabin Layout

Centerline Queen Pedestal Bed in Master

Sundeck Motor Yacht with Cockpit

Sundeck Hard Top

Sundeck Privacy/Sun Screen (new 8/14)

Fly Bridge w/Bimini & Enclosure

Freedom Lift Hydraulic Dingy Lift 10'3" Rigid Jolly Boat 1998 Dingy w/15HP Yamaha

Wesmar Bow Thruster

Garmin Electronics

Garmin GPSmap 7212 Touchscreen Chart Plotter

And Much More!

Beautiful boat! Fresh Imron paint from the Hinckley yard (2011) and factory remanufactured Cummins diesels (2011) with low, low hours. She spent the first 10 years of her life in fresh water, and has received obvious excellent care by her current liveaboard

and previous owners. This well-maintained yacht is truly exceptional for her age and price and offers a rare opportunity for anyone looking for an excellent boat for cruising, living aboard, or just relaxing!

With her comfortable double cabin layout and pedigree Ed Monk design, she is perfect for living aboard or cruising. Her 18'6" bridge clearance, shoal draft, full walk-around side decks, cockpit, solar panels, and propane cooktop make her an ideal choice for the ICW, the Bahamas, Keys, or the loop. She is exceptionally well maintained by her live-aboard owners.

Основная информация

Тип судна: Траулер	Модельный год: 1998
Год постройки: 1997	Страна: United States
Регистрационный номер: 1062315	Верх: Enclosed
Кубрик: Да	

Размеры

Длина общая: 44' 0" (13.41m)	Ширина: 13' 11" (4.24m)
Мин. осадка: 3' 2" (0.97m)	Макс. осадка: 3' 2" (0.97m)

Скорость, вместимость и масса

Водоизмещение: 27000 Pounds	Вместимость воды: 150 Gallons
Вместимость сточного бака: 68 Gallons	Объем топливного бака: 300 Gallons

Размещение

Всего кают: 2

Всего коек: 2

Спальные места: 4

Всего ком. состава: 2

Корпус и палуба

Материал корпуса: Fiberglass

Материал палубы: Fiberglass Sandwich

Комплектация корпуса: Modified Deep Vee

Цвет корпуса: White

Информация о двигателе

Производитель: Cummins

Модель: 6BTA 5.9

Тип топлива: Diesel

ПОДРОБНОЕ ОПИСАНИЕ

Vessel Walk Through

Lush teak cabinetry provides ample storage throughout this well designed vessel. Under custom fit and bound carpeting (new Feb 2014) is beautiful teak parquet flooring. The 2 stateroom 2 head layout features a full beam aft master stateroom with ensuite head and separate shower. From the aft stateroom, the bright and open Salon is forward and up a few steps. The salon settee has new cushions, upholstery and a leather recliner (new Sept 2014). There is a lower helm station forward to starboard. Moving forward, the galley and dinette are forward and down a few steps. The windshield offers plenty of light and a spacious feeling in this area. The guest cabin, now being used as an office, is forward and features a larger V-Berth with a filler and private head.

The cockpit with swim platform, transom door, and Freedom Lift allow you to board the boat conveniently even with the dingy on board. When cruising, the cockpit is ideal for using the dingy as well as for fishing, swimming, snorkeling, and just relaxing.

The sundeck with hard top and new sun screens (Aug 2014) provides the ultimate comfortable outdoor living space. Solar panels are mounted on the hard top.

The fly bridge with radar arch offers additional seating, helm seat, mate seat, and modern electronics. The bimini, full enclosure, and custom covers are all in excellent condition.

Wide side decks and oversized stainless steel railing offer safe access to the foredeck.

Salon

The bright and open salon offers excellent visibility from the lower helm and a panoramic view through large windows.

L-Shaped Settee (new cushions & upholstery 9/14)

Custom Bound Carpeting (new 2/14)

Teak Parquet Floors under Carpet

U-Line Ice Maker (new 3/14)

Fusion Sound System with Blue Tooth (new 8/14)

Fusion Stereo Remote on Sundeck (new 8/14)

JBL Speakers in Radar Arch (new 8/14)

Salon Speakers

Vision 32" Flat Screen TV

Follow-Me SAT/TV W/DVD

Custom Shades

Opening Windows

Teak Cabinets with Quality Workmanship

Hidden Bar

Lower Helm

The functional lower helm wastes no space in the comfortable salon.

AC/DC Panel with Clear Plexi-glass Doors

Tank Tender Tank Gauge- Fuel and Water

Beautiful Teak Steering Wheel

Morse Dual Lever Controls

Wesmar Bow Thruster Control

Robertson AP 300X Autopilot Control

ACR Spot Light Control

Standard Horizon VHF

Full Engine Instrumentation

Fire Boy Fire System (Recertified 6/14)

Danforth Constellation Compass

Galley

The galley, with the windshield above and an opening stainless steel port, is bright and open. Fine teak cabinets provide generous storage.

Princess 3 Burner Propane Stove

Double Stainless Steel Sink

Salt Water Spigot at Galley Sink

LG Convection Microwave Oven (new 6/14)

Generous Storage in Fine Teak Cabinetry

12v/110v Refrigerator w/ Freezer

Combination Smoke/CO Alarm

Dinette

To starboard, opposite the galley, the dinette is bright and open with the windshield above and an opening stainless steel.

Comfortable Dining for 4

Storage Under Seats

Stainless Steel Opening Port

Master Aft Cabin

The full beam master stateroom with queen size walk-around pedestal bed provides the comfort and storage for long term cruising or living aboard.

Queen Size Walk-Around Pedestal Bed

Two Large Hanging Lockers

Opening Hatch in Transom

Side Windows w/Custom Shades

SMX II A/C Control

Sony 23" Flat Screen TV with DVD

Combination Smoke/CO Alarm

Ensuite Head & Shower

Master Head

The ensuite master head is bright and spacious with a large vanity mirror and separate shower.

Guest Cabin Forward

Large V-berth with Filler

Cedar Lined Hanging Locker

Multi-shelf Storage Locker

Multiple Storage Cabinets & Drawers

Foredeck Hatch

Private Head

(2) Stainless Steel Opening Ports

Combination Smoke/CO Alarm

Guest Head

Bright and spacious private head.

Cockpit

The cockpit with swim platform, transom door, and Freedom Lift allows you to board the boat conveniently even with the dingy on board. When cruising, the cockpit is ideal for using the dingy as well as for fishing, swimming, snorkeling, etc.

Swim Platform

Freedom Lift Hydraulic Dingy Lift 10'3" Rigid Jolly Boat 1998 Dingy w/15HP Yamaha

Dingy Cover

Transom Door

(2) Rod Holders

(1) Rocket Launcher

Stainless Steel Magma Propane Grill

Propane Locker with Two Tanks (Stove and Grill)

Hot & Cold Fresh Water Shower

(2) Hauser Pipes/Cleats in Quarters

(2) Hauser Pipes/Cleats in Transom

Marquipt Boarding Ladder Stored on Brackets

Hatch to Master Stateroom

Throw Ring

Teak Steps to Sundeck (new 8/14)

American Flag & Varnished Flag Pole

Sun Deck

The sundeck with hard top and new sun screens (Aug 2014) provides the ultimate comfortable outdoor living space.

Sun Deck w/Hard Top

Sun Deck Privacy/Sun Shades (new 8/14)

Teak Chair & Table

(2) Deck Chairs

Large Storage Locker

Teak Steps to Fly Bridge (new 8/14)

Fly Bridge Electronics & Controls

Full Engine Instrumentation

Wesmar Bow Thruster Control

Garmon GPSmap 7212 Color Plotter

Garmin GPSmap 541S Color Plotter

Furuno 48 Mile Radar

Robertson AP 300X Autopilot Control

Garmin VHF 100

Standard Horizon Ram Mic VHF

Morse Dual Lever Controls

ACR Spot Light Control

Danforth Compass

Stainless Steel Destroyer Type Wheel

High Water Alarm

12v Outlet

Flybridge

The flybridge with radar arch offers additional seating, helm seat, mate seat, and modern electronics. The bimini, full enclosure, and custom covers are all in excellent condition.

Tracy International Helm and Mate Seats

Bimini Top & Enclosure in Excellent Condition

Venturi Windshield

Additional Seating

Storage Lockers

Full Seat & Helm Covers

Radar Arch for Electronics

Follow-Me SAT/TV

Deck

Safe access is offered to the foredeck by wide side decks and oversized railings.

Wide side decks

Oversized Stainless Steel Railing

New Forward Hatch Canvas Cover (new 8/14)

New Dual Trumpet Ungaro Electric Horn (new 8/14)

Fender Holders

Bow Pulpit

Vertical Windlass

Windlass Foot Switch Control

Stainless Steel Plow Anchor

Aluminum Fortress Anchor

Mantus Anchor Bridle

Engine Room & Mechanical

Twin Cummins Re-manufactured Cummins Installed 2011

Twin 6BTA5.9 315 HP w/ 320 Hours

Fresh Water Cooling

Bronze Raw Water Strainers (2) 16,000 BTU Remote A/C Compressors (1 new March 2015)

Reverso 5-Way Oil Change System (new 6/13)

New Sanitation Hoses for Aft Head (new 5/14)

New Port Engine Raw Water Pump and Hose (new 9/13)

New Port Engine Raw Water Sea Cock (new 9/13)

New Black Water Holding Tank Pump (new 1/14)

Rebuilt Starboard Engine Alternator (11/13)

Rebuilt Port Engine Alternator (3/14)

New Racor 1000FG Fuel Filter Assemblies - Port and Starboard (new 1/14/)

New AC Pump and Manifold (new 6/14)

New Fresh Water Pump (new 6/14)

Electrical

AC/DC Panel at Lower Helm

Westerbeke 8.0 KW Generator

(2) 50 AMP Shore Cords

McCarron VMI Battery Charger

(5) 8D Gel Batteries

(2) New Batteries 12/13, (1) New Battery 2/14

Brokers Remarks

The 44 Ocean Alexander Sundeck Cockpit MY is an exceptional cruising yacht by Ed Monk who is renowned as one of the top designers for this type of yacht. Her twin engine hull with a long keel provides excellent tracking and partial protection for running gear. The cockpit, sundeck, fly bridge, with aft cabin layout offers all the amenities required for comfortable cruising, entertaining, and living aboard.

In terms of condition, she is top of the line! Her flawless paint and Cummins factory re-manufactured diesel engines installed in 2011 set her apart from all the other boats you will look at. Inside she is neat as a pin and equally well maintained by her dedicated owners who are full time live aboard cruisers. This yacht will not disappoint! Call for an appointment.

Disclaimer

The Company offers the details of this vessel in good faith but cannot guarantee or warrant the accuracy of this information nor warrant the condition of the vessel. A buyer should instruct his agents, or his surveyors, to investigate such details as the buyer desires validated. This vessel is offered subject to prior sale, price change, or withdrawal without notice.

Исключения

При продаже яхты исключаются личные вещи владельца.

Отказ от ответственности

Компания предоставляет описание судна или яхты добросовестно, но не может гарантировать точность этой информации, а также не ручается за техническое состояние. Покупатель должен проинструктировать своих агентов или оценщиков исследовать представленную информацию более подробно, по собственному желанию. Продажа судна или яхты, изменение цены или снятие с продажи будет происходить без предварительного уведомления.

ФОТОГРАФИИ

Salon



Galley



Master Stateroom



Flybridge Helm



Salon



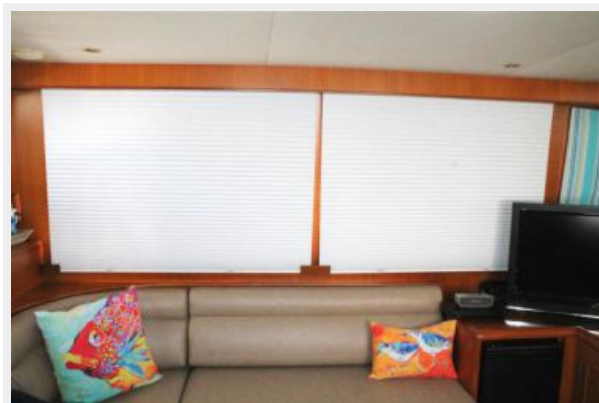
Salon



Salon



Salon



Galley



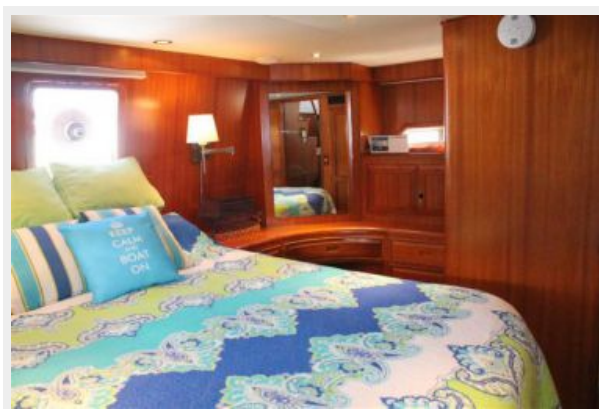
Dinette



Master Stateroom



Master Stateroom



Master Stateroom



Master Stateroom



Master Stateroom



Master Head



Master Shower



Guest Cabin



Guest Cabin



Guest Head



Flybridge Helm



Flybridge Helm



Wesmar Bow Thruster



Flybridge Helm Seats



Flybridge Helm Seats



Flybridge Helm Bench Seat



Solar Panels



Flybridge Covers



Flybridge Covers



Flybridge Covers



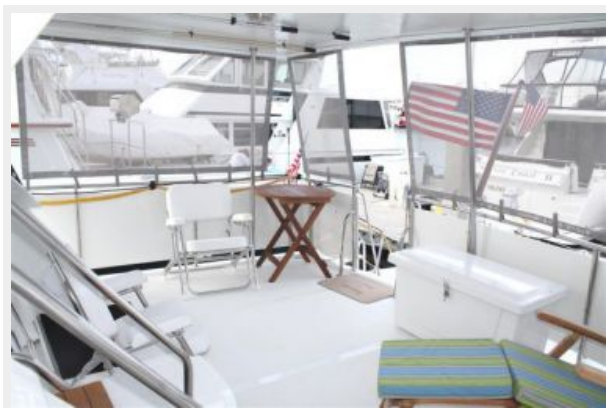
Flybridge Instrument Covers



Sundeck



Sundeck



Sundeck



Sundeck



Sundeck Sun Shades



Dinghy & Cockpit



Dinghy & Cockpit



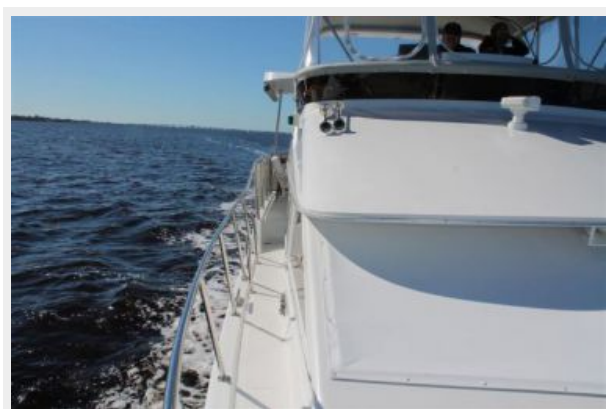
Cockpit



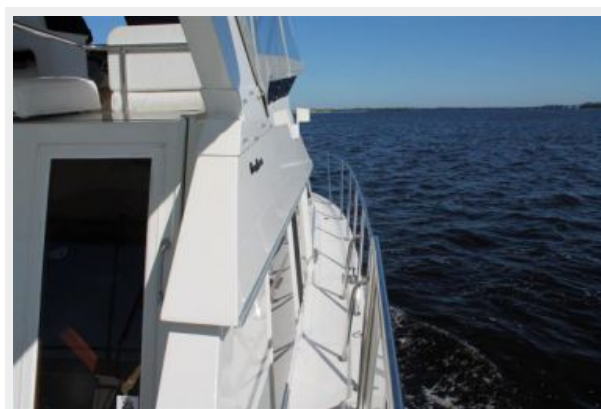
Cockpit



Side Deck Aft



Side Deck Forward



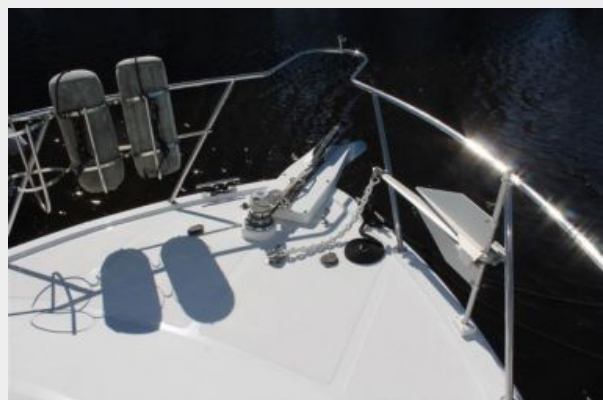
Foredeck



Foredeck from Flybridge



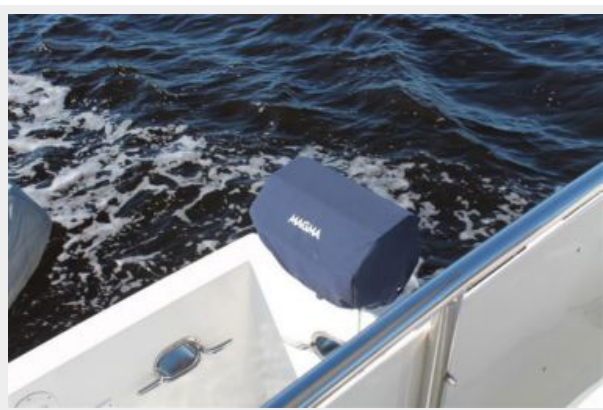
Foredeck



Foredeck Looking Aft



Propane Grill



Propane Grill



Propane Box



Propane Box



Dinghy & Freedom Lift



Dinghy & Lift Control



Launch the Dinghy



Boarding Ladder



Cockpit Shower



Cockpit Shower



Starboard Cummins Reman



Port Cummins Reman



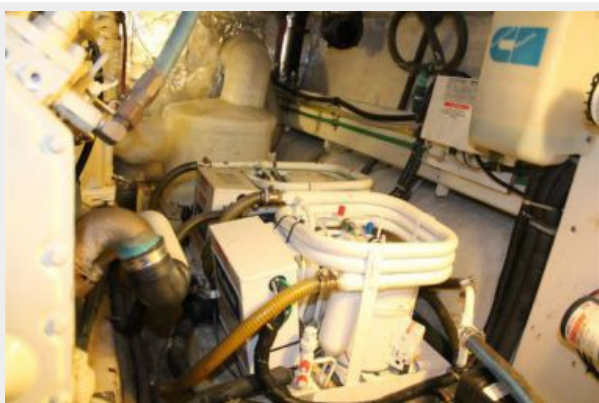
Engine Hour Meter



5 Way Oil Change System



Port Side AC Compressors



Starboard Side Battery Boxes



Genset Sound Shield



Westerbeke



Battery Charger



Raw Water Strainers



400 Gallon Aluminum Fuel Tank



Hinckley Imron Paint



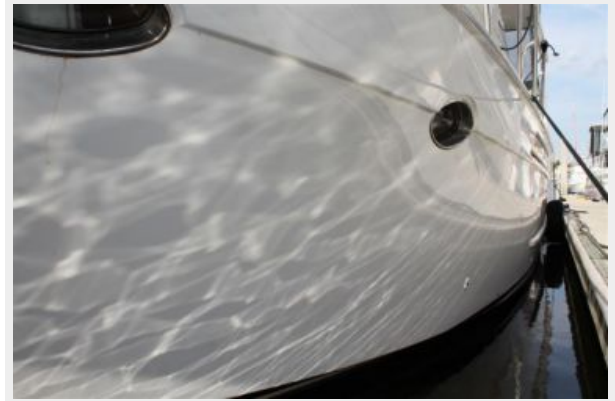
Profile



Profile



Hinckley Imron Paint



Profile



Profile



Profile



КОНТАКТЫ

Андрей Шестаков (Andrey Shestakov) – ведущий яхтенный брокер отдела продаж яхт и судов компании Shestakov Yacht Sales Inc. Официальный представитель Shestakov Yacht Sales Inc. для русскоговорящих клиентов в центральном офисе компании в Майами/Форт Лодердейл/Флорида/США.

Контактная информация

Email: andrey@shestakovyachtsales.com

Web: shestakovyachtsales.com

Телефоны

Краснодарский край: **+7(918)465-66-44**

США, Майами, Флорида: **+1(954)274-4435**

Время работы

Понедельник – Суббота: **9:00 - 21:00**
EDT

Воскресенье: **Закрито**

Адрес



Harbour Towne Marina, 850 NE 3rd St,
STE 213, Dania, FL 33004