

ABSOLUTE 52 FLY FLYBRIDGE — ABSOLUTE



Builder: ABSOLUTE

Year Built: 2015

Model: Motor Yacht

Price: PRICE ON APPLICATION

Location: United States

LOA: 52' 6" (16.00m)

Beam: 14' 10" (4.52m)

Max Draft: 3' 8" (1.12m)

Cruise Speed: 23 Kts. (26 MPH)

Max Speed: 30 Kts. (35 MPH)

Our experienced yacht broker, Andrey Shestakov, will help you choose and buy a yacht that best suits your needs **Absolute 52 FLY Flybridge — ABSOLUTE** from our catalogue. Presently, at Shestakov Yacht Sales Inc., we have a wide variety of yachts available on our sale's list. We also work in close contact with all the big yacht manufacturers from all over the world.

If you would like to buy a yacht **Absolute 52 FLY Flybridge — ABSOLUTE** or would like help answering any questions concerning purchasing, selling or chartering a yacht, please call **+1(954)274-4435**

TABLE OF CONTENTS

TABLE OF CONTENTS	2
SPECIFICATIONS	4
Overview	4
Basic Information	4
Dimensions	4
Speed, Capacities and Weight	5
Accommodations	5
Hull and Deck Information	5
Engine Information	5
PHOTOS	6
Aft Cabin head	14
Aft Cabin	14
Aft Cabin head	14
BBQ Grill and sink	14
Cablemaster controls and Hot/Cold Shower.	14
Spacious cockpit	14
Spacious cockpit	15
Electric shade	15
Converting Sunpad/Seating in cockpit	15
Configured as a large sunpad	15
Aft Sunpad	15
Power Cablemaster	15
Cockpit ice maker	16
Galley and saloon	16
Galley and saloon	16
Large fridge and freezer	16
Saloon dinette area with hi-low folding table and opposing settee	16
Galley and saloon	16

Saloon dinette area with hi-low folding table and opposing settee	17
Helm station	17
Raymarine touchscreen electronics, autopilot, Volvo joystick with Volvo DPS system	17
Side deck access door from helm station	17
Breaker panel	17
VIP stateroom	18
VIP stateroom	18
Private VIP head with day-head access	18
Private VIP head with day-head access	18
Guest stateroom	18
Master stateroom	19
Master stateroom	19
Master stateroom	19
Master stateroom closet	19
Master stateroom	19
Master stateroom	19
Master stateroom washer-dryer combo unit	20
Master stateroom vanity	20
CONTACTS	24
Contact details	24
Telephones	24
Office hours	24
Address	24

SPECIFICATIONS

Overview

This ABSOLUTE 52 FLY arrived from Italy to Miami! She's loaded with options and ready to go! -Largest fly-bridge in it's class with superb seating and lounging. -Exceptional lower accommodations layout with 3 staterooms (+1 more aft) -Spacious cockpit aft with convertible sun-pad. -Access door from lower helm station to starboard side deck. -4th cabin + head aft with private access from swim platform. -Full beam hydraulic swim platform. -High-end Raymarine eSeries HybridTouch 15" touchscreen navigation electronics (2 in lower helm + 1 in fly-bridge). -Volvo Penta IPS engines + Volvo Penta Joystick on lower helm and fly helm. -Upgraded in Miami with a Water-Maker. -Upgraded in Miami with the Volvo Penta DPS (Dynamic Positioning System)

YB INTERNATIONAL Salesperson: Alex Guerrero Cell Phone: +1 (786) 361-5880+1 (786) 361-5880 - Please call cell first. Ask for Alex. Email:

You'll need Skype CreditFree via Skype

Basic Information

Category: Motor Yacht

Sub Category: Flybridge

Model Year: 2015

Year Built: 2015

Country: United States

Vessel Top: Open W/Bimini Top

Fly Bridge: Yes

Dimensions

LOA: 52' 6" (16.00m)

Beam: 14' 10" (4.52m)

Max Draft: 3' 8" (1.12m)

Clearance: 18' 10" (5.74m)

Speed, Capacities and Weight

Cruise Speed: 23 Kts. (26 MPH)

Cruise Speed Range: 266

Max Speed: 30 Kts. (35 MPH)

Water Capacity: 119 Gallons

Fuel Capacity: 423 Gallons

Fuel Consumption: 36 Gallons

Accommodations

Total Cabins: 3

Total Berths: 4

Sleeps: 6

Total Heads: 2

Captain Cabin: True

Crew Cabin: 1

Crew Berths: 1

Crew Sleeps: 1

Crew Heads: 1

Hull and Deck Information

Hull Material: Fiberglass

Deck Material: Teak

Engine Information

Engines: 2

Manufacturer: Volvo Penta

Model: D6-IPS 600

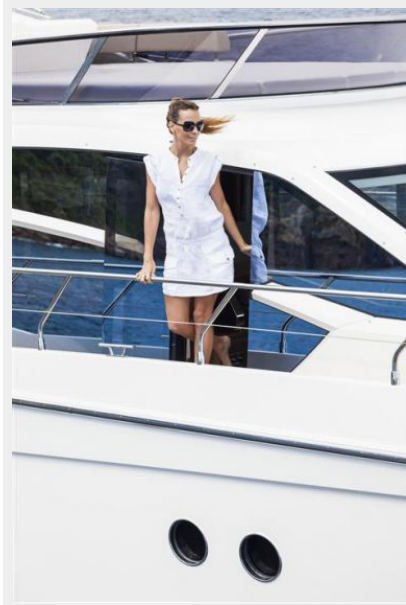
Engine Type: Inboard

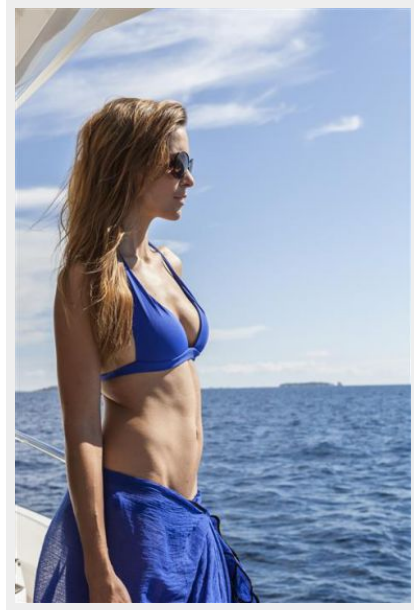
Fuel Type: Diesel

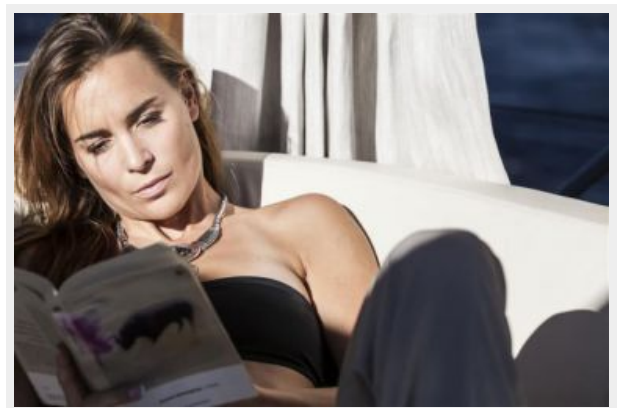
PHOTOS



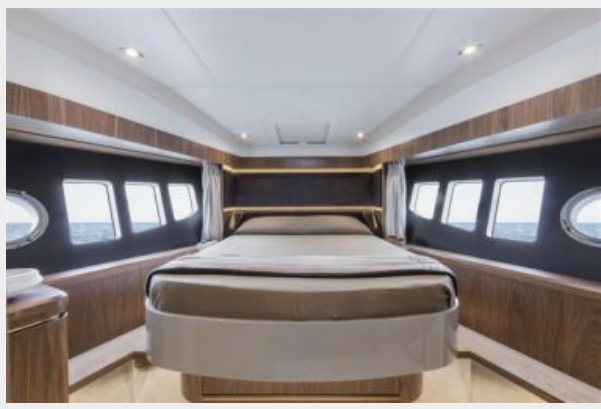






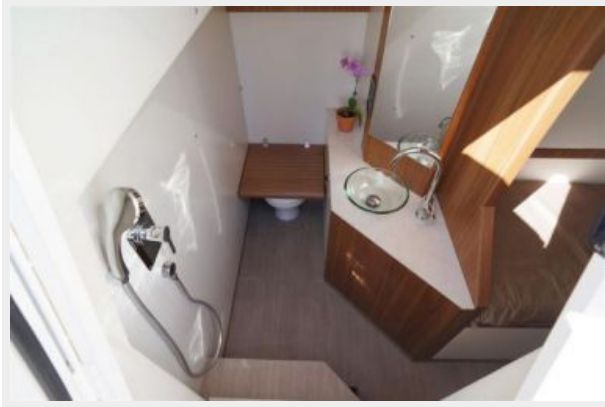








Aft Cabin head



Aft Cabin



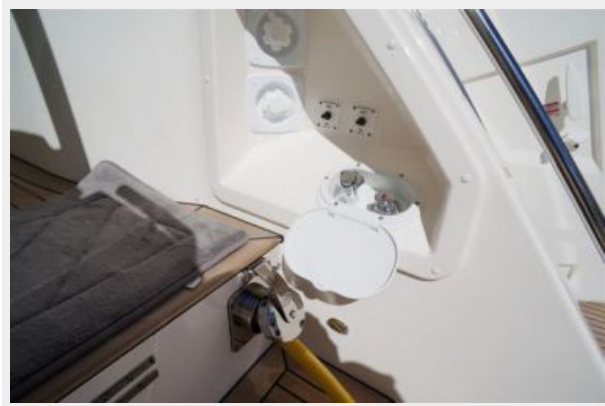
Aft Cabin head



BBQ Grill and sink



Cablemaster controls and Hot/Cold Shower.



Spacious cockpit



Spacious cockpit



Electric shade



Converting Sunpad/Seating in cockpit



Configured as a large sunpad



Aft Sunpad



Power Cablemaster



Cockpit ice maker



Galley and saloon



Galley and saloon



Large fridge and freezer



Galley and saloon



Saloon dinette area with hi-low folding table and opposing settee



Saloon dinette area with hi-low folding table and opposing settee



Helm station



Raymarine touchscreen electronics, autopilot, Volvo joystick with Volvo DPS system



Side deck access door from helm station



Breaker panel



VIP stateroom



VIP stateroom



Private VIP head with day-head access



Private VIP head with day-head access



Guest stateroom



Master stateroom



Master stateroom



Master stateroom



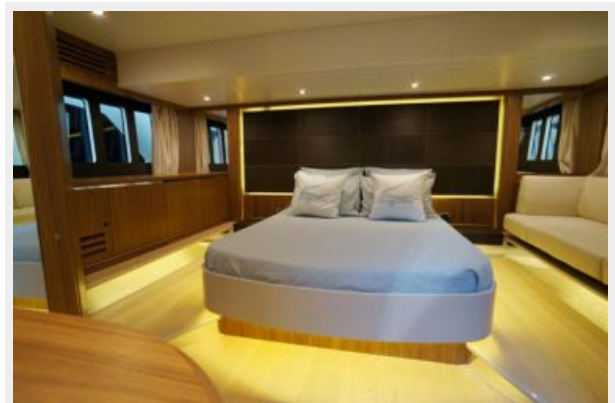
Master stateroom closet



Master stateroom



Master stateroom



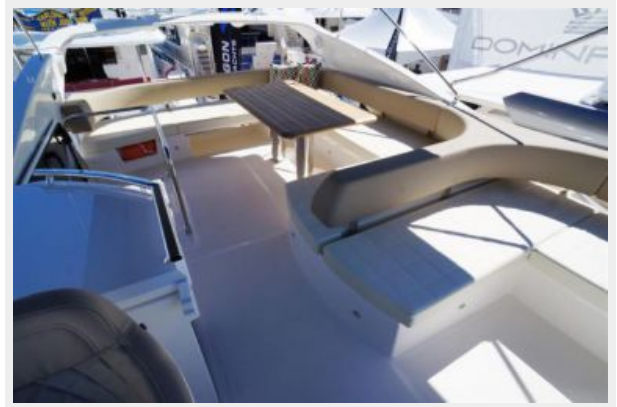
Master stateroom washer-dryer combo unit



Master stateroom vanity









CONTACTS

Andrey Shestakov, leading yacht broker of the sales department of Shestakov Yacht Sales Inc. Shestakov Yacht Sales Inc., the official representative of the Miami/Fort Lauderdale FL headquarters.

Contact details

Email: andrey@shestakovyachtsales.com

Web: shestakovyachtsales.com/en/

Telephones

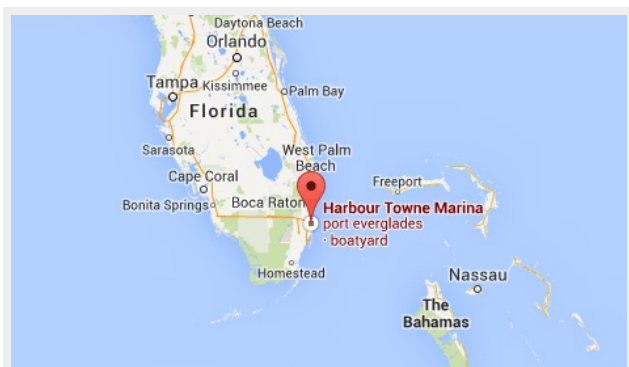
USA: +1(954)274-4435

Office hours

Monday – Saturday: **9:00 - 21:00** EDT

Sunday: **closed**

Address



Harbour Towne Marina, 850 NE 3rd St,
STE 213, Dania, FL 33004