

## YACHTA YACHTA — WEST BAY SONSHIP



**Судостроитель:** WEST BAY SONSHIP

**Год постройки:** 2002

**Модель:** Моторная яхта

**Цена:** **ЦЕНА ЯХТЫ ПО ЗАПРОСУ**

**Местонахождение:** United States

**Длина общая:** 68' 0" (20.73m)

**Ширина:** 20' 0" (6.10m)

**Макс. осадка:** 5' 0" (1.52m)

**Крейс. скорость:** 18 Kts. (21 MPH)

**Макс. скорость:** 22 Kts. (25 MPH)

Купить Yachta Yachta — WEST BAY SONSHIP а также выбрать подходящую вам яхту из нашего каталога яхт вам поможет опытный яхтенный брокер Андрей Шестаков. На сегодняшний день компания Shestakov Yacht Sales Inc. имеет большое количество яхт в собственном списке продаж, а также тесно сотрудничает со всеми крупными яхтенными производителями по всему миру.

Для того чтобы купить яхту Yachta Yachta — WEST BAY SONSHIP а также проконсультироваться по любому вопросу связанному с покупкой, продажей, чартером яхт позвоните по телефону **+7(918)465-66-44**.

# ОГЛАВЛЕНИЕ

ОГЛАВЛЕНИЕ	2
ХАРАКТЕРИСТИКИ	4
Обзор	4
Основная информация	4
Размеры	4
Скорость, вместимость и масса	4
Размещение	4
Корпус и палуба	5
Информация о двигателе	5
ПОДРОБНОЕ ОПИСАНИЕ	6
Salon	6
Galley	6
Pilothouse	6
Master Stateroom	7
Master Head	7
VIP Stateroom	7
VIP Head	8
Guest Stateroom	8
Crew Quarters	8
Aft Deck	9
Electronics - Lower & Upper Helm	9
Additional Equipment	10
Exclusions	11
Исключения	11
Отказ от ответственности	11
ФОТОГРАФИИ	12
КОНТАКТЫ	21
Контактная информация	21

---

Телефоны	21
Время работы	21
Адрес	21

# ХАРАКТЕРИСТИКИ

## Обзор

New to the market! This stunning 68 pilothouse has been fresh water kept for the last 7 years. Her owner has managed this boat with an open check book. Custom 13 inch extension on the salon makes her one of a kind. She is a must see and will not last long. Schedule an appointment today, you won't be disappointed!

## Основная информация

**Тип судна:** Моторная яхта

**Подкатегория:** Pilothouse

**Модельный год:** 2002

**Год постройки:** 2002

**Страна:** United States

## Размеры

**Длина общая:** 68' 0" (20.73m)

**Ширина:** 20' 0" (6.10m)

**Макс. осадка:** 5' 0" (1.52m)

## Скорость, вместимость и масса

**Крейс. скорость:** 18 Kts. (21 MPH)

**Макс. скорость:** 22 Kts. (25 MPH)

**Водоизмещение:** 94000 Pounds

**Вместимость воды:** 400 Gallons

**Вместимость сточного бака:** 150 Gallons **Объем топливного бака:** 1800 Gallons

## Размещение

**Всего кают:** 4

## Корпус и палуба

---

**Материал корпуса:** Fiberglass

## Информация о двигателе

---

**Двигатели:** 2

**Производитель:** MTU

**Модель:** 8V2000

**Тип двигателя:** Inboard

**Тип топлива:** Diesel

---

# ПОДРОБНОЕ ОПИСАНИЕ

---

## Salon

---

The salon is entered from the cockpit through stainless and glass double doors. Custom u shaped couch to port that seats 10 people. Custom designed salon coffee table. Custom matching ottomans to starboard. Custom cherry cabinetry throughout. Starboard cabinetry includes entertainment center with surround audio and pop up Panasonic 42 inch flat screen TV, wine fridge and bar area. The salon is finished with 2 inch wood blinds. Madrone burl finishes on all cabinetry horizontal surfaces throughout. Duet blinds with soffit on aft salon doors. Phantom screens on aft salon and pilothouse doors. Custom extension of salon measuring 13 inches by factory.

## Galley

---

Granite countertops

Stainless steel oven with ceramic cook top

Stainless steel convection/microwave

Dual stainless steel sinks

Stainless steel dish washer

Stainless steel compacter

Ample drawer and cabinet storage

Pass through layout to salon

## Pilothouse

---

Large u shaped settee with leather seating facing forward

2 Stidd helm chairs

Port and starboard doors to side decks

Stainless steps to flybridge

Overhead lighting throughout

---

## Master Stateroom

---

King size bed with custom innerspring mattress

Custom cabinetry throughout

Walk in cedar lined hanging closet

Built in night stands with reading lights

Mirrored aft bulkhead

Entertainment center with flat screen television

Stainless steel port light to port and starboard

Upgraded custom soft goods

---

## Master Head

---

Custom marble floors and countertops

Glass enclosed shower stall

Myson heated towel bar

Vacuflush head

Large vanity with storage, sink and mirror

Stainless port light in shower

Fitted mirror headliner

Privacy door

---

## VIP Stateroom

---

Queen size centerline bed with custom innerspring mattress

2 Lewmar overhead hatches for light and ventilation

Built in cabinetry to port and starboard

Hanging locker to port

Ample drawer and cabinet storage

Reading lights above bed

Flat screen Television

Beveled mirror on forward bulkhead

## VIP Head

---

Custom marble floors and countertops

Vanity with storage and sink

stainless steel portlight

Myson heated towel rack

Glass shower enclosure

Vacuflush head

Mirrored sliding door medicine cabinet above sink

## Guest Stateroom

---

Over under bunks with lower bunk widened to double

Custom innerspring mattresses

Hanging locker

Stainless steel portlight

Ample drawer and cabinet storage

Reading lights

Flat screen television

## Crew Quarters

---

Custom Freeman watertight door from swim step



Raised single bunk with storage below

Enclosed head with stall shower, vanity and sink and vacuflush head

Ample storage cabinets in companion way

Starboard side work room with L shaped work bench

Stainless steel portlights to port and starboard

---

## Aft Deck

---

Teak decking

Curved stairways on port and starboard from swim step to cockpit

Built in seating facing forward with free standing custom chairs facing aft

Lazarette hatch with stainless steel steps

Built in stainless steel barbeque

Custom teak table for dining

Fold up docking station on port and starboard with thruster control

Refreshment center with sink and storage

Stainless steel safety gates to swim step

Custom stainless steel staples on swim step (5)

U Line fridge/ice maker

---

## Electronics - Lower & Upper Helm

---

Raytheon RL 80 radar

Raytheon 300 WASS DGPS depth finder

Raytheon L760 color sounder

Panasonic KX 7433 digital telephone system

ICOM M45 VHF

ICOM IC-M 127 VHF

ICOM UAF hailer

Ocean PC with Nobeltec plotter 15 inch

Ocean PC 12.1 bright screen display

Robertson RFC-35R compass

Robertson AP20 autopilot with AP22 remote

Datamarine link 120KE

Elbex EXE ECM camera system with 10 inch display

KNH Trac Vision 6 satellite Dome

KVH Trac phone with Mitsubishi hand set

Alpine COM 7584 AM/FM/CD player

Babb flush mount speakers on flybridge

## **Additional Equipment**

---

Exterior courtesy lighting

Wesmar stabilizers

Cockpit flood lighting

Switlik 6200 6 man life raft

400 feet 3/8 anchor chain

14' Rendova with 50HP Yamaha 4 stroke

Custom canvas covers for all outside and bridge seating

125lb Davis Talon anchor

Village Marine 800 GPD watermaker

3500lb Muir windlass

2 raw water washdowns located in anchor locker/aft deck

Fresh water washdown on aft deck

2000lb Nick Jackson davit with 270 degree power rotation and luffing

Barrett custom enclosure on flybridge

---

## Exclusions

---

**All personal property is excluded unless specifically identified and included in the sale agreement and listing specifications. Personal property refers to all items not permanently attached to the vessel including but not limited to: artwork, furnishings, and recreational or entertainment items. Advertisements, marketing materials, and/or other photography may depict the vessel with personal property, however, such personal property is excluded unless otherwise specifically included as provided herein.**

---

## Исключения

---

При продаже яхты исключаются личные вещи владельца.

---

## Отказ от ответственности

---

Компания предоставляет описание судна или яхты добросовестно, но не может гарантировать точность этой информации, а также не ручается за техническое состояние. Покупатель должен проинструктировать своих агентов или оценщиков исследовать представленную информацию более подробно, по собственному желанию. Продажа судна или яхты, изменение цены или снятие с продажи будет происходить без предварительного уведомления.

# ФОТОГРАФИИ



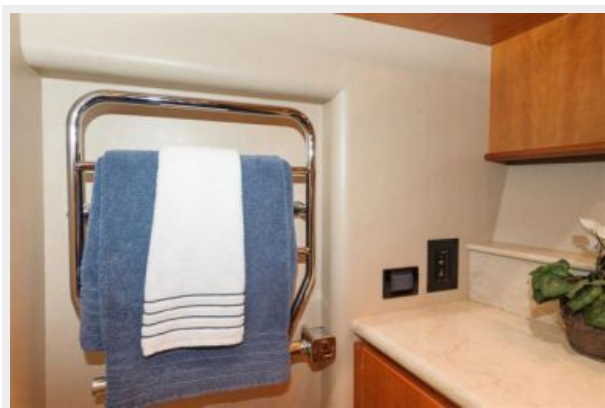




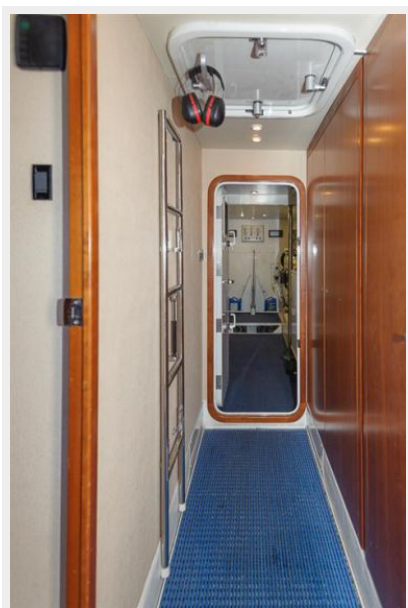














# КОНТАКТЫ

---

Андрей Шестаков (Andrey Shestakov) – ведущий яхтенный брокер отдела продаж яхт и судов компании Shestakov Yacht Sales Inc. Официальный представитель Shestakov Yacht Sales Inc. для русскоговорящих клиентов в центральном офисе компании в Майами/Форт Лодердейл/Флорида/США.

## Контактная информация

---

Email: [andrey@shestakovyachtsales.com](mailto:andrey@shestakovyachtsales.com)

Web: [shestakovyachtsales.com](http://shestakovyachtsales.com)

## Телефоны

---

Краснодарский край: **+7(918)465-66-44**

США, Майами, Флорида: **+1(954)274-4435**

## Время работы

---

Понедельник – Суббота: **9:00 - 21:00**  
EDT

Воскресенье: **Закрито**

## Адрес

---



Harbour Towne Marina, 850 NE 3rd St,  
STE 213, Dania, FL 33004