

TWIZZLE — ROYAL HUISMAN



Судостроитель: ROYAL HUISMAN

Год постройки: 2010

Модель: Крейсерский кеч

Цена: ЦЕНА ЯХТЫ ПО ЗАПРОСУ

Местонахождение: France

Длина общая: 188' 8" (57.50m)

Ширина: 38' 1" (11.59m)

Мин. осадка: 12' 6" (3.80m)

Макс. осадка: 35' 6" (10.80m)

Крейс. скорость: 12 Kts. (14 MPH)

Макс. скорость: 17 Kts. (20 MPH)

Купить TWIZZLE — ROYAL HUISMAN а также выбрать подходящую вам яхту из нашего каталога яхт вам поможет опытный яхтенный брокер Андрей Шестаков. На сегодняшний день компания Shestakov Yacht Sales Inc. имеет большое количество яхт в собственном списке продаж, а также тесно сотрудничает со всеми крупными яхтенными производителями по всему миру.

Для того чтобы купить яхту TWIZZLE — ROYAL HUISMAN а также проконсультироваться по любому вопросу связанному с покупкой, продажей, чартером яхт позвоните по телефону **+7(918)465-66-44**.

ОГЛАВЛЕНИЕ

ОГЛАВЛЕНИЕ	2
ХАРАКТЕРИСТИКИ	3
Обзор	3
Основная информация	3
Размеры	3
Скорость, вместимость и масса	3
Размещение	4
Корпус и палуба	4
Информация о двигателе	4
ПОДРОБНОЕ ОПИСАНИЕ	5
Detailed Specification	5
Исключения	15
Отказ от ответственности	15
ФОТОГРАФИИ	17
КОНТАКТЫ	20
Контактная информация	20
Телефоны	20
Время работы	20
Адрес	20

ХАРАКТЕРИСТИКИ

Обзор

Launched in 2010, TWIZZLE is an elegant sailing yacht providing luxurious comfort and functionality, whilst remaining competitive under regatta conditions. With naval architecture by Dubois and exterior and interior by Redman Whiteley Dixon, the yacht is optimized for world cruising, with a retractable centre board that allows access to shallow anchorages. She is exceptionally eco-friendly and is certified to the highest levels for operation in the world's oceans. Key features include seamless indoor-outdoor spaces, a master suite with separate dressing room, decks with uninterrupted sea views and a fully custom ketch rig. TWIZZLE has won a range of awards since launch, including Best Custom Yacht at the Asia Boating Awards and Best Sailing Yacht Design Over 40m at the International Superyacht Society Awards.

Основная информация

Тип судна: Крейсерский кеч

Подкатегория: Представительская парусная яхта

Модельный год: 2010

Год постройки: 2010

Страна: France

Размеры

Длина общая: 188' 8" (57.50m)

Ширина: 38' 1" (11.59m)

Мин. осадка: 12' 6" (3.80m)

Макс. осадка: 35' 6" (10.80m)

Скорость, вместимость и масса

Крейс. скорость: 12 Kts. (14 MPH)

Макс. скорость: 17 Kts. (20 MPH)

Водоизмещение: 1212542.441 Pounds

Чистый вес: 498 Pounds

Объем топливного бака: 11663.1960958 Gallons

Размещение

Всего кают: 5

Спальные места: 10

Каюта капитана: Да

Спальных мест экипажа: 11

Корпус и палуба

Материал корпуса: Alustar

Дизайнер экстерьера: Redmand Whiteley
Dixon Ltd

Дизайнер интерьера: Redman Whiteley
Dixon Ltd

Информация о двигателе

Производитель: Caterpillar

Модель: C32

Тип топлива: Diesel

ПОДРОБНОЕ ОПИСАНИЕ

Detailed Specification

GENERAL

Year Built 2010

Builder Royal Huisman Shipyard

Type Flybridge cutter rigged ketch

Classification Lloyds +100A1 SSC YACHT MONO
G6 +LMC UMS LY-2 compliant GL
(rig)

Flag Isle of Man

IMO Number 1010363

Dimensions Length O.A. 57.50m (188.6ft)
Beam 11.59m (38ft)
Draft 10.80m (35.43ft) board down
3.80m (12.47ft) board up

Tonnage Gross 498

Displacement 550

Construction Hull Alustar aluminium

Superstructure

Aluminium, carbon rigs and booms,
centreboard in duplex stainless steel, teak
decks laid

**Exterior
Designer**

Redman Whiteley Dixon Ltd

**Interior
Designer**

Redman Whiteley Dixon Ltd

MACHINERY

Main Engine 1 x 970 kW Caterpillar diesel engine type C32

Engine Hours Port Main Engine – hrs

Starboard Main Engine – hrs

Speed Cruising

Maximum

Range 4,000 nm approx. (@11 knots)

Gear Box 1 x 4:1 ZF reverse reduction gear box type 3350

Shaft & Propellers Wartsila propulsion variable pitch propeller (1,500mm diameter), four blades with high skew

AUXILIARY MACHINERY & ELECTRICAL SYSTEMS

Generators 3 x 155kW Northern Lights generators type M1066H
3 x RHS/Greentop custom built regenerative soot filters with PLC control

Generator Hours

Electricity 230/400 VAC 3-phase 50Hz

Shore Power 1 x 150kW Magnus Marine shore power system

Power Management Alewijnse power management system

Batteries Central UPS system with 24 x emergency lithium ion batteries

8 x starting batteries with chargers (2 sets of 4 batteries)

2 x Radio batteries with chargers

2 x emergency crane batteries with charger

TANK CAPACITIES (APPROXIMATE)

Fuel	44,150 litres (11,679 US gallons)
Lube Oil	11,700 litres (3,095 US gallons)
Grey & Black Water	5.860 litres (1,550 US gallons)

ANCILLARY EQUIPMENT

Steering System	Royal Huisman custom hydraulically operated steering system with full sea state feedback (2 x exterior stations on the fly-bridge and 1 x interior bridge steering station)
Bow Thruster	1 x 130kW Hundested bow thruster type FT4RL
Stern Thruster	1 x 130kW Hundested stern thruster type FT4RS
Sewage Treatment Systems	Hamann Mini Compact system with 1,000 litres holding tank, capacity of 8,100 litres per day
WC's	Jets Evac vacuum system
Air-Conditioning	Marine Air system based on fancoils and fresh air united and dedicated chiller for electronics
Water Makers	Custom-built configuration based on: 2 x HEM reverse osmosis wastermarker type 40/Duplex/4200 in a custom frame with capacity to produce approximately 2 x 18,000 litres (4,672 US gallons) per day

SAFETY AND SECURITY EQUIPMENT

	6 x Zodiac Survitec 8 person liferafts
Safety	Embarkation/pilot ladder
	Extensive personal lifesaving equipment
	Seawater fire fighting systems
	Hi-Fog water mist fire fighting systems
Fire Fighting	Novec 1230 for engine room, control room and technical space on the bridge
	Argonite for main switchboard
	Portable fire extinguishers for engine room and accommodation
Ships Monitoring System	RHS alarm and monitoring system (Twizznet)
	Alarm notification & forwarding system
Security	Eltek fire alarm system
	General abandon ship and MOB alarm system
	Steward call system
SAILS & RIGGING	
Rig	Southern Spars NZ custom carbon fibre masts and rollaway carbon booms
	Main
	I = 58.67m (192.49ft)

	P = 53.60m (175.85ft)
	E = 17.25m (56.06ft)
Rig Measurements	J = 19.25m (63.16ft)
	Mizzen
	Py = 54.51m (152.59ft)
	Ey = 14.05m (46.10ft)
Standing Rigging	Southern Spars NZ continuous EC6+ low profile rigging with titanium spreader tips
	Rondal Custom captive reel and drum winches throughout the yacht
Winches	8 x deck winches with 8,000kg CWL
	19 x captive winches with 2,500kg-18,000kg RW
	Main North 3Di TB delivered 2015
	Mizzen North 3Di TB delivered 2015
Sail Wardrobe	North 3DL carbon/aramid headsails 2010
	North Sailes Nylon gennaker with C-Tech Snuffair
	Inflatable snuffer 2010
	Mainsail -544m ² (5,857ft ²)
	Staysail – 189m ² (2,029ft ²)
	Genoa – 821m ² (8,839ft ²)
	Blade jib – 491m ² (5,289ft ²)
Sail Areas	Mizzen – 399m ² (4,268ft ²)
	Gennaker – 1,742m ² (18,747ft ²)

Mizzen staysail – 538m² (5,793ft²)

Total sail area upwind – 1,952m² (21,007ft²)

RHS manifold system for sail handling

Custom Bosch Rexroth

3 x Main engine power take offs

3 x Generator power take offs

2 x 400Vac hydraulic pumps, frequency controlled

DECK EQUIPMENT

Anchor Windlass

2 x Steen hydraulic anchor windlass

Ground Tackle

2 x 1,100lbs stainless steel CQR bow anchors

Boat Crane

Custom C-quip hydraulic knuckle-boom boat crane for launching the tenders on the fore deck (concealed under deck)

Passerelle

Custom Yachttec hydraulically operated passerelle

Side Gangway

Ackerboon custom side gangway, manually operated on starboard side

Side Boarding

2 x RHS hydraulically operated custom side boarding ladders (on port and starboard sides)

Ladders

Swimming Platform Royal Huisman customised adjustable boarding/swimming platform with a custom hydraulically controlled carbon fibre C-quip swimming ladder. Grand stairs provides access to the main deck

COMMUNICATION EQUIPMENT

Satcom Thrane & Thrane, Sailor TT-3000EB Satcom C satellite communications terminal

VHF Radio Telephones Sailor VHF radiotelephone type RT4800 en TT 4802

Vsat Seatel VSat terminal type Wavecall 4006. 2 Antennas

Telephone Exchange Cisco Systems telephone exchange type 2851

Cellular System Altobridge GSM/3G mobile gateway via VSat

Internet Thrane & Thrane FB-500 fleet broadband. 2 Antennas

NAVIGATION EQUIPMENT

Integrated Bridge Marine Technologies (MT) Integrated Bridge System (IBS)
Royal Huisman/Radio New Zealand full glass touch screen panels with integrated widescreen displays at bridge and at flybridge helm stations

Dynamic Positioning Marine Technologies Dynamic Positioning System

Gyro Compass Cassens & Plath Navigat 21000 gyro compass

Log / Echo Sounder Brookes & Gatehouse Hydra 3000 navigation system

Radar 2 'X' – Band radars integrated with MT Bridge System

DGPS 2 x Radio Holland Saab R4 DGPS (1 with AIS)

Chart Plotter

Weather Fax

Wind Instruments Brookes & Gatehouse Hydra 3000 navigation system

OFFICE EQUIPMENT

Computers Custom computer network based upon fibre optic Cisco switches, ship-wide wireless access points, internet by satellite communications/Wifi/Fleet/3G (with IDEA Vessel Information Organiser (VOI))

AUDIO / VISUAL ENTERTAINMENT SYSTEMS

Extensive audio visual multi-zone entertainment system with

Kaleidascope server and Crestron control. Satellite television – 2
Antennas

Kaleidascope DVD server

Pod/iPhone music & movie

Blu-Ray

Crestron Media Matrix with
Crestron and iTouch
controls

All guest accommodation has:

Satellite TV broadcasting
SAT/Cable/Sky TV

Radio and internet Radio
streaming

Chart and Ship's positions

Guest photo TV channel

ACCOMMODATION

Owner	1 x full beam owner's suite aft with bathroom en suite and owner's office and separate shower room aft (the owner's accommodation has access to the aft seating cockpit)
Guests	2 x double guests cabins with shower-rooms en suite 1 x Twin guest cabin with shower room en suite (with additional pullman bunk)
Crew	1 x captain's cabin aft with shower room en suite and direct access to the wheelhouse (this cabin could be converted into an additional 5 th guest cabin)

5 x Upper and lower berthed twin cabins forward all with shower rooms en suite

TENDER

2 x 21ft (6.4m) Castoldi diesel Jet tenders (housed in tender bays under hatches forward)

OTHER EQUIPMENT

2 x Laser Pico sailing dinghies

2 x Bic Oassou Kayaks

Diving and snorkelling equipment

Waterskis & wakeboards

Bauer dicing compressor

Hytech Nitrox Production Company air mixer

Исключения

При продаже яхты исключаются личные вещи владельца.

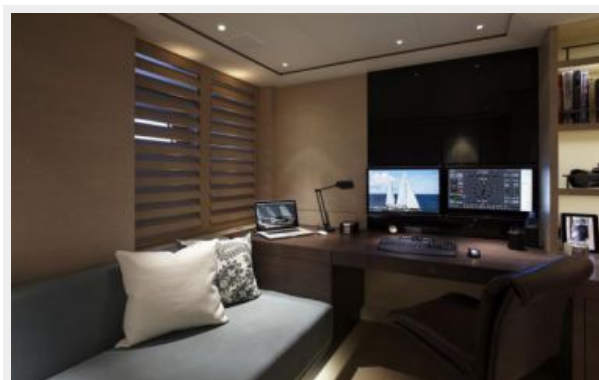
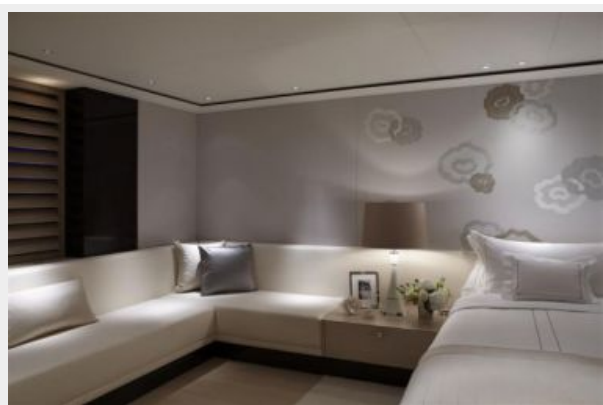
Отказ от ответственности

Компания предоставляет описание судна или яхты добросовестно, но не может гарантировать точность этой информации, а также не ручается за техническое состояние. Покупатель должен проинструктировать своих агентов или оценщиков

исследовать представленную информацию более подробно, по собственному желанию. Продажа судна или яхты, изменение цены или снятие с продажи будет происходить без предварительного уведомления.

ФОТОГРАФИИ







КОНТАКТЫ

Андрей Шестаков (Andrey Shestakov) – ведущий яхтенный брокер отдела продаж яхт и судов компании Shestakov Yacht Sales Inc. Официальный представитель Shestakov Yacht Sales Inc. для русскоговорящих клиентов в центральном офисе компании в Майами/Форт Лодердейл/Флорида/США.

Контактная информация

Email: andrey@shestakovyachtsales.com

Web: shestakovyachtsales.com

Телефоны

Краснодарский край: **+7(918)465-66-44**

США, Майами, Флорида: **+1(954)274-4435**

Время работы

Понедельник – Суббота: **9:00 - 21:00**
EDT

Воскресенье: **Закрыто**

Адрес



Harbour Towne Marina, 850 NE 3rd St,
STE 213, Dania, FL 33004