

SEA DRAGGIN — OCEAN YACHTS



Builder: [Ocean Yachts](#)

Year Built: 2006

Model: Sport Fisherman

Price: PRICE ON APPLICATION

Location: United States

LOA: 57' 0" (17.37m)

Beam: 16' 10" (5.13m)

Max Draft: 4' 10" (1.47m)

Our experienced yacht broker, Andrey Shestakov, will help you choose and buy a yacht that best suits your needs **Sea Draggin — Ocean Yachts** from our catalogue. Presently, at Shestakov Yacht Sales Inc., we have a wide variety of yachts available on our sale's list. We also work in close contact with all the big yacht manufacturers from all over the world.

If you would like to buy a yacht **Sea Draggin — Ocean Yachts** or would like help answering any questions concerning purchasing, selling or chartering a yacht, please call **+1(954)274-4435**

TABLE OF CONTENTS

TABLE OF CONTENTS	2
SPECIFICATIONS	4
Overview	4
Basic Information	4
Dimensions	4
Speed, Capacities and Weight	4
Accommodations	4
Hull and Deck Information	4
Engine Information	5
DETAILED INFORMATION	6
Salon	6
Galley	6
Companionway	6
Master Stateroom	6
Master Head	7
VIP Forward Stateroom	7
VIP Head	7
Crew Quarters (3rd Stateroom to Port)	7
Crew Quarters Head	7
Cockpit	7
Deck and Hull	8
Enclosed Flybridge	8
Back Deck of Enclosed Flybridge	8
Electronics and Helm	8
Electrical	9
Engine and Mechanical	9
Exclusions	9
Exclusions	9

Disclaimer	9
PHOTOS	10
CONTACTS	21
Contact details	21
Telephones	21
Office hours	21
Address	21

SPECIFICATIONS

Overview

JUST LISTED!

Basic Information

Category: Sport Fisherman

Model Year: 2007

Year Built: 2006

Country: United States

Fly Bridge: Yes

Cockpit: Yes

Dimensions

LOA: 57' 0" (17.37m)

Beam: 16' 10" (5.13m)

Max Draft: 4' 10" (1.47m)

Speed, Capacities and Weight

Displacement: 66269 Pounds

Water Capacity: 200 Gallons

Fuel Capacity: 1047 Gallons

Accommodations

Total Cabins: 3

Total Heads: 3

Hull and Deck Information

Hull Material: Fiberglass

Engine Information

Engines: 2

Manufacturer: Caterpillar

Engine Type: Inboard

Fuel Type: Diesel

DETAILED INFORMATION

Salon

Slide entrance door L-shaped leather seating to port with storage underneath actuated seats Bose surround sound system Pop up actuated flat screen TV Teak maple inlay wood interior Carpeted floor Overhead lighting Fabric Lambrequins and Hunter Douglas blinds Electric panel to stbd behind teak door (6) sets of Bose surround sound speakers U-Line wine cooler U-Line icemaker Zone air conditioning High gloss countertop to stbd with liquor storage Spiral staircase with teak steps leading to enclosed flybridge

Galley

Large booth style step up dinette with high gloss teak table Leather seating Teak and maple inlay wood Teak and holly flooring Corian countertops Bose Lifestyle surround sound DVD and music player behind teak door Large walk in U-shaped galley with corian countertop (2) sets of Sub-Zero drawers (refrigerator and freezer) with teak face and teak handles Broan trash compactor Blanco stainless sink hardware Forseio 3 burner cooktop under corian countertop Trash compactor Water gauge Sharp Carousel convection microwave oven Instahot water dispenser (3) sets of cabinet doors with gold fixtures for pots/pan storage LED lighting overhead (2) sets of overhead cabinets above countertop with Sub Zeros Padded lambrequins throughout

Companionway

Maytag washer/dryer stacked units Access to crew's quarters head

Master Stateroom

Full beam master with padded headboard and queen style centerline bed (2) high gloss teak nightstands, one on each side of bed Carpeting Gold hardware (2) 110v outlets Dimmer switches for 12v and 24v lighting Padded headliner Large hanging cedar lined closet Large teak high gloss countertops with (3) sets of drawers and teak bullnosing Overhead Dash cabinets 32" Visio flat screen TV Bose speaker system with subwoofer, Sole DVD player, satellite box LED lighting Wallpaper throughout 26" Visio flat screen TV Teak interior (2) nightstands with high gloss teak searails Centerline master bed Teak and holly flooring in master head Shower forward (2) Cedar lined hanging closets at foot of bed Bilge access forward of master stateroom Mirrored door access to master bath LED lighting (2) 110v outlets (4) LED lights in headliner (2) sets of cabinets in master bed Carbon monoxide/smoke detector Dimmer switches 12v/24v lighting in headliner SMX Cruiseair digital A/C control pad Private head access

Master Head

Teak and holly flooring Mirrored vanity Dometic SeaLand vacuflush freshwater system Corian countertop with undermount sink and storage underneath Corian backsplash (2) Stainless towel holders Hanging towel racks Exhaust fan AC outlets LED lighting Large shower with Moen fixtures Wallpaper throughout

VIP Forward Stateroom

Queen size bed Cabinets all teak with maple inlay Dual hanging closets lined with cedar Carpet flooring Samsung TV with DVD & SAT Large mirror on wall Bed-side drawers on each nightstand Overhead cabinets Full length mirror on bathroom door Private head access

VIP Head

Private access to VIP Stateroom Vacu-Flush head Sink with mirrored vanity Walk-in shower with seat Under sink cabinets Exhaust fan Overhead lighting AC outlets Air conditioning

Crew Quarters (3rd Stateroom to Port)

3 over/under bunks on right side with teak bullnosing and searail Single bunk on left side with (2) drawers and storage underneath Centerline nightstand and teak cedar lined hanging closet (2) 110v outlets Padded headboard at head of all bunks 20" Visio flat screen TV Sole DVD player Cabinets overhead single bunk for storage Brow access in headliner of crew's quarters Carbon monoxide/smoke detector Dimmer style rocker switches for lighting

Crew Quarters Head

Teak and holly flooring Mirrored vanity Dometic SeaLand vacuflush freshwater system Corian countertop with undermount sink Corian backsplash (2) Stainless towel holders LED lighting Large walk in shower with Moen fixtures Wallpaper throughout

Cockpit

Large spacious cockpit with fiberglass table on bulkhead Large stadium seating area with freezer underneath Plug in remote engine controls, remote for stereo Sink and bait station Engine room access Pipewelders retractable Sunshade overhang (4) JL Audio stereo speakers Kenwood stereo controls Under gunnel, rod locker and storage on each side In transom livewell Swim platform Tuna door with lift gate Lazarette access on both sides with stainless locking turndown handles (2) large insulated fish boxes on either side of cockpit sole with port box fed by Eskimo chipper Instep drinkbox storage SeaFire fire extinguisher emergency pull handle Fresh/salt water

washdown (4) Lee rod holders Deck is white non-skid with covering boards Large salon window Aluminum ladder with stbd steps leading to flybridge

Deck and Hull

Safety rail Ladder and lockers Hinged oversized cockpit awning Enclosed bridge Aft bridge steering station All wiring with circuit breakers for electronics Duplex electrical outlet – 120V Spreader lights Aft rail Molded-in spreader lights Rod holders (4) Molded fiberglass Self-bailing Cockpit side lockers Insulated fish box with pump-out Transom gate and hinged stern door Swim platform Door to engine room Seawater and freshwater wash down Bait center with freezer/sink Sink and fresh water spigot Transom live well Hatch dunnage box Stereo speakers Lazarette access Bow pulpit, fiberglass Anchor chain and Rhode White, Handrails, aluminum (6) Cleats, (2) stern, (2) bow and (4) spring line Hawse pipes Forward deck hatch Fenders holders Tinted safety glass (2) Lewmar Hatches in Hardtop Lewmar Concept II windlass w/foot control Drink box in step Cockpit table on pedestal M-1500 davit Dinghy cradle Tackle locker Side window rails (2) Triple spreader Rupp outriggers

Enclosed Flybridge

Pompanette Platinum series helm chairs with adjustable footrest and seatback Leather L-shaped seating to port with storage underneath Large windows throughout Padded walls throughout Corian countertop with sink U line refrigerator with ice maker with cabinet underneath 15" Samsung flat screen TV LED lighting throughout Sunshade window protectors Cruisair AC unit Kenwood Stereo system VDO fuel tank gauges Front and rear windshield wiper controls Windlass control Pioneer stereo speakers Raymarine cameras in engine room, salon and cockpit Micro Commander controls 12v and 24v Electric panel SMX II Digital Cruisair AC control (2) Lumar hatches VRK smoke and carbon monoxide detector

Back Deck of Enclosed Flybridge

(4) JL Audio stereo speakers (2) Quartz spreader lights ZF controls Hynautic steering Stairs leading to cockpit (6) rod holders on belly band

Electronics and Helm

Vetus bow thruster (2) Raymarine E120 GPS/Plotter/Sounder/Radar combinations CAT MPD digital engine gauges Raymarine auto helm series smart pilot ST8001 Kenwood receiver w/cockpit remote JL audio speakers Icom M504 VHF SeaFire fire system indicator lights Bennett trim tabs ACR spotlight with digital control pad I-com m504 vhf Raymarine ST800 auto pilot 1000 watt airmar B164 transducer Raymarine ST60 tri data depth sounder Transom underwater lights ZF electronic controls Bennett trim tabs Arc 102 spotlight Danforth constellation compass

Pompanette platinum helm chairs KVH trac vision Engine room, salon and flybridge cameras

Electrical

Electrical control and distribution panels with circuit breakers Voltmeters and battery condition indicator Engine synchronizer Zoned air conditioning with reverse cycle heating Zinc anodes Generator-21.5 kW water cooled Onan 626 hours Heavy duty batteries two banks with automatic battery charger Battery parallel system Shorelines cable master (2) 220V-50A with automatic cord reels Grounding plate ground system Electrical outlets Generator-15 KW water cooled Westerbeke 120V duplex

Engine and Mechanical

Full sound and heat insulated engine room Awlgrip engine room Twin C-32 caterpillar 1650 HP water cooled engines Fuel filters – main engines Alternators External sea strainers – large wedge type Automatic fire extinguisher system Fiberglass mufflers Fresh water spigot Blowers Propellers (2) Nibral, 5 blades Dripless Shaft logs Rudders Stainless Steel Struts with bearings Electric Reverso oil exchange system engine and generators Heat recovery bottles – engines and generator Electrical outlet Village marine 600gpd water maker Trim tabs Eskimo E600 ice chipper Engine fluid and filters changed 10/14 - 694 hrs 1000 hr service performed 10/12 - 540 hrs

Exclusions

Personal items

Exclusions

Owner's personal belongings.

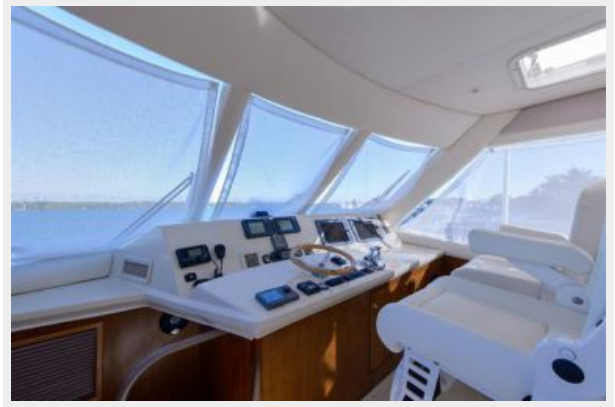
Disclaimer

The Company offers the details of this vessel or yacht in good faith but cannot guarantee or warrant the accuracy of this information nor warrant the condition of the vessel. A buyer should instruct his representatives, agents, or his surveyors, to investigate such details as the buyer desires validated. This vessel or yacht is offered subject to prior sale, price change, or withdrawal without notice.

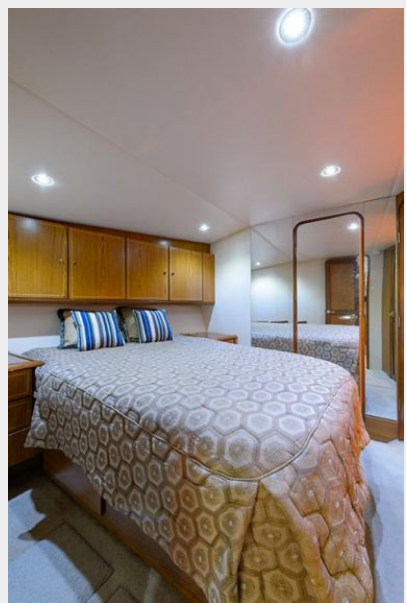
PHOTOS























CONTACTS

Andrey Shestakov, leading yacht broker of the sales department of Shestakov Yacht Sales Inc. Shestakov Yacht Sales Inc., the official representative of the Miami/Fort Lauderdale FL headquarters.

Contact details

Email: andrey@shestakovyachtsales.com

Web: shestakovyachtsales.com/en/

Telephones

USA: +1(954)274-4435

Office hours

Monday – Saturday: **9:00 - 21:00** EDT

Sunday: **closed**

Address



Harbour Towne Marina, 850 NE 3rd St,
STE 213, Dania, FL 33004