

JEMMINY — SYMBOL



Builder: SYMBOL

Year Built: 2006

Model: Motor Yacht

Price: PRICE ON APPLICATION

Location: United States

LOA: 68' 0" (20.73m)

Beam: 18' 5" (5.61m)

Min Draft: 4' 5" (1.35m)

Cruise Speed: 19 Kts. (22 MPH)

Max Speed: 23 Kts. (26 MPH)

Our experienced yacht broker, Andrey Shestakov, will help you choose and buy a yacht that best suits your needs **JEMMINY — SYMBOL** from our catalogue. Presently, at Shestakov Yacht Sales Inc., we have a wide variety of yachts available on our sale's list. We also work in close contact with all the big yacht manufacturers from all over the world.

If you would like to buy a yacht **JEMMINY — SYMBOL** or would like help answering any questions concerning purchasing, selling or chartering a yacht, please call **+1(954)274-4435**

TABLE OF CONTENTS

TABLE OF CONTENTS	2
SPECIFICATIONS	4
Overview	4
Basic Information	4
Dimensions	4
Speed, Capacities and Weight	4
Accommodations	5
Hull and Deck Information	5
Engine Information	5
DETAILED INFORMATION	6
Accommodations	6
Mechanical	6
Electronics	8
Deck Equipment	8
Fly Bridge	9
Exclusions	10
Disclaimer	10
PHOTOS	11
Salon	11
Salon Bar	11
Day Head	11
Salon	11
Pilothouse	11
galley	11
Helm	12
Master	12
Master	13
Master	13

Master head	13
Hallway	13
Guest	14
Guest	14
Guest head	14
Guest head	14
VIP	15
VIP	15
VIP head	15
VIP head	15
Bow	16
Bow	16
Bow	16
Flybridge	17
Flybridge bar	19
CONTACTS	20
Contact details	20
Telephones	20
Office hours	20
Address	20

SPECIFICATIONS

Overview

Exceptional attention to detail on this 68' Symbol motoryacht, with loads of updates, both mechanical and cosmetic. 3 staterooms with salon day head and aft crew quarters, new rib on transom, new water maker and complete interior upholstery and carpeting throughout 2013. Captain maintained with open-checkbook policy. 3 staterooms, 3 heads, plus crew quarters with head.

Basic Information

Category: Motor Yacht

Sub Category: Pilothouse

Model Year: 2006

Year Built: 2006

Country: United States

Vessel Top: Hardtop

Fly Bridge: Yes

Dimensions

LOA: 68' 0" (20.73m)

Beam: 18' 5" (5.61m)

Min Draft: 4' 5" (1.35m)

Speed, Capacities and Weight

Cruise Speed: 19 Kts. (22 MPH)

Max Speed: 23 Kts. (26 MPH)

Displacement: 94000 Pounds

Water Capacity: 370 Gallons

Holding Tank: 150 Gallons

Fuel Capacity: 1200 Gallons

Accommodations

Total Cabins: 3	Total Berths: 4
Sleeps: 6	Total Heads: 4
Crew Cabin: 1	Crew Berths: 1
Crew Sleeps: 2	Crew Heads: 1

Hull and Deck Information

Hull Material: Fiberglass	Hull Designer: Jack Sarin
---------------------------	---------------------------

Engine Information

Engines: 2	Manufacturer: Caterpillar
Model: C-18	Engine Type: Inboard
Fuel Type: Diesel	

DETAILED INFORMATION

Accommodations

The interior features satin-finished cherry wood paneling. All upholstery was updated in the Fall of 2012. The galley counter top is beige granite with black flecks. All heads have tan marble counter tops, teak & holly flooring and Grohe fixtures. Carpeting throughout was updated Spring 2014 and is light blue, low cut, luxurious pile.

Window treatments are highlighted by Hunter Douglas silhouette blinds in the salon. Headliners are high-quality Majilite vinyl material with a custom cherry wood ceiling design in the salon. Large viewing windows are found on the main deck and stainless steel opening port lights provide natural in the staterooms. Cabinet pulls, door hardware and plumbing fixtures are satin-finished nickel. All stateroom closets are cedar-lined and storage is maximized. The Salon is quite spacious, featuring a 10' L-shaped, custom fabric covered sofa, two easy chairs and a hi-lo table with burl wood top. A long set of cabinets to port house the entertainment center new pop-up Samsung Smart TV 46". SEA-TEL Sat receiver that will receive programming even in the Bahamas. Overhead, salon LED lighting sets the mood.

Walking forward, the Pilothouse is up three stairs with an L-shaped settee that seats six to port, a centered helm station and a Stidd helm seat. Wing pantograph-style doors on either side provide access to the covered walkaround side decks. A wood stairwell to port leads up to the flybridge. The Galley is aft and to starboard. New Amtico flooring in galley. Accommodations are reached via the starboard stairwell in the Pilothouse. The Master Staterooms is located aft with a private head to starboard. The master berth is king size with the headboard aft. A full walk-in closet is to port. The port lights on both sides are framed with stylish Shoji screens. Forward are double doors which open to a foyer. There is a vanity to starboard. New Amtico Flooring in Master head. New Samsung smart TV in Master Stateroom. Forward and to port through the companionway is a cozy and inviting Guest Stateroom which houses twin over/under berths and a private head. The VIP Stateroom occupies the bow and features a centerline queen berth and its own private head. Crew quarters are accessed through the aft deck under the bench seating. Cabin has a double bed, head, and galley.

Mechanical

The Engine Room is accessed from the aft deck via a concealed door in the staircase to the Flybridge. Full stand-up headroom with convenient access throughout. The Engine Room is dressed in white, perforated aluminum with foam / lead sound shielding behind. The twin CAT 1000 hp engines are mounted on one-piece polished stainless steel beds. Two 600-gallon fuel tanks run awthartships forward in the Engine Room for superior balance (connected via hoses with ball valves, sight gauges, and distribution manifold). Recent engine service by a CAT dealer tech, allowed for a thorough going over prior to her winter cruising down south. 1000 hour service was previously performed in 2011, with receipts. Extendable CAT Platinum warranties

available to 2017.

- ZF 550 transmissions
- Racor dual FG 1000 fuel / water separators (per engine)
- Dual FG500 fuel / water separator (genset)
- Glendinning electronic controls (3-stations)
- (6) Rule Automatic / manual bilge pumps
- Wesmar hydraulic bow and stern thrusters
- Seawater strainers with ball valves
- Torrid 30-gallon hot water heater
- Holding tanks with Sealand macerator & Y-valves
- Fresh water spigot
- Ventilation system fans
- All wiring is color-coded, numbered and neatly secured in wire looms per ABYC guidelines of 2006
- Northern Lights 16 kW genset with remote panel
- Northern Lights 12 kW genset with remote panel
- Xantrex 4000-watt inverter (doubles as a charger located with the house bank under forward companionway)
- Charles 12-V DC / 30-amp battery charger
- Guest brand battery switches
- Shorepower inlet - 125-V AC, 30-amp 125 / 250 VAC distribution panel with thermal circuit breakers in pilothouse
- Blue Seas multi-meter gauges (monitor 5 load groups)
- Wema tank gauges in pilothouse
- Monitor system with high water alarms
- Updated LED lighting throughout.
- Aqua Signal navigation lights
- MarineAir 72K BTU direct expansion, reverse cycle, 6-units air conditioning with digital controls
- Two Seawater pumps and intakes for redundancy
- Teleflex hydraulic steering with Power Assist
- Headhunter and Paragon fresh water pumps (dual redundant units with accumulator tank)
- Tecma Silence Plus' Heads
- Par brand shower and cabin blowers
- Fireboy CG2-1000 Fire Extinguisher system in engine room
- LiveLine AGM Group-31 batteries (house, engines start, gensets & electronics)
- Charles 24-V DC / 40-amp battery charger
- Glendinning 50-amp Cablemaster shore power reels port amidships_ telephone / CATV inlet
- 12 / 24V DC distribution panel with thermal circuit breakers in pilothouse
- Digital CAT engine gauges
- Holding tank gauges in pilothouse
- Bonding system with transom

- Hull zinc / shafts
- Vimar light switches and covers with Cantalupi dimmers
- Exterior spreader lights in flybridge
- Electrical outlets, interior and exterior with GFI's (where needed)
- OCEAN LED underwater lights, installed Oct.'12 and over \$12k spent (3 Transom 5 Total)
- Watermaker 600 GPD

Electronics

- Simrad AP26 autopilot in pilothouse and flybridge
- CCTV system (displays on monitors)
- Furuno RD30 multi-function instrument units in pilothouse and flybridge
- Sirius Sea Tel SAT TV on flybridge
- Samsung 46" TV on lift with A/V system (salon)
- LCD TV's in Master Stateroom, VIP, and Guest staterooms
- (2) Furuno NavNet monitors with GPS
- 14" Northstar 972's Color plotters / radar / video depth finders in pilothouse and flybridge
- ICOM M602 VHF in pilothouse and flybridge with extra receivers in salon and Master Stateroom
- Northstar 972 in pilothouse and flybridge
- Compasses in pilothouse and flybridge
- Panasonic AM/FM/CD units in all three staterooms
- Rudder angle indicator
- Sea Tel Sat TV
- New custom 3-sided hard panel enclosure and venturi on Flybridge
- New Skyvue weatherproof 32" TV's with Direct TV on flybridge and cockpit.

Deck Equipment

The hull has shallow propeller pockets and is solid FRP layup. Hull sides, decking and superstructure are all foam-core laminate. Windows are designed for excellent visibility in the Pilothouse and Salon. All are tempered safety glass with tinted sides and are frameless with silicone seams. Pilothouse windows have crew V-Kool heat reducing coatings. All four water tanks and three holding tanks are plastic. Drains, sumps and bilges are connected to a common manifold FRP tube which runs lengthwise down each side and discharges after under the platform. Main exhausts are the underwater type with stern bypasses. Air intakes (E/R) and fuel vents are mounted inside on the walk-around side decks. The Aft Deck is sizeable and highlighted by the previously mentioned built-in stairway to the Flybridge and an L-shaped al fresco settee. The Lazarette can be accessed by means of a large deck hatch. It offers convenient contact with the heavy-duty, all stainless steel steering gear and provides plenty of deck storage. The transom door opens to an integral swim platform with concealed swim ladder. The main and forward decking is covered with molded pyramid non-skid. The wide walk-around

side decks are covered. All deck rails and fittings are top quality polished 316-grade stainless steel. The Foredeck houses dual anchor hatches and an anchor pulpit. The Flybridge features an L-shaped settee with FRP table aft of two Recro helm chairs. A custom-built, fully equipped Wet Bar occupies the Boat Deck and includes four stainless steel bar stools and a magnificent, cherry wood counter to with gloss finish.

- Aquamet 22 shafting
- Stainless steel One-Pair struts with rubber cutlass bearings
- Hynautic trim tabs
- Stidd Admiral-series helm chair in pilothouse
- Exalto windshield wipers and washers
- Aritex brand polished stainless steel
- Sliding salon door and aft window frames
- Bomar deck hatch in VIP
- Winslow 8-person liferaft
- Deck fresh water wash downs
- Horn
- (2) 4-Blade bronze propellers
- PYI dripless shaft and tide
- Rudder seals
- FRP laminate hardtop with recessed LED lighting
- Venturi windscreen on flybridge
- Plexiglas material with stainless steel frames
- Aritex brand heavy-duty watertight wing doors (port)
- Pacific Coast watertight door on flybridge
- Delta 80# stainless steel anchor with galvanized HT chain
- Fenders and dock lines
- Transom shower and swim ladder
- Aft deck docking station with bow/stern thrusters
- New Walker Bay Generation 400 Rib tender with Yamaha 50 hp 4-stroke
- UMT 1500 Davit and chocks on swim platform
- Westmar fin stabilizers
- Hydraulic bow and stern thrusters
- Hydraulic anchor windlass

Fly Bridge

Flybridge entertainment includes an updated Fusion stereo system with ipod connection and SIRIUS/XM, a full bar with four stainless pedestal stools, overhead custom sun shade, and aft lounge seating. The flybridge galley includes a Miele electric grill, sink with hot and cold fresh water, new under cabinet fridge, Scotsman icemaker and a significant amount of storage.

Additionally, a coffin sized "Frigid Rigid" cooler (with seat cushion) can keep drinks iced down for

a very long time.

Exclusions

Owner's personal belongings.

Disclaimer

The Company offers the details of this vessel or yacht in good faith but cannot guarantee or warrant the accuracy of this information nor warrant the condition of the vessel. A buyer should instruct his representatives, agents, or his surveyors, to investigate such details as the buyer desires validated. This vessel or yacht is offered subject to prior sale, price change, or withdrawal without notice.

PHOTOS

Salon



Salon Bar



Salon



Day Head

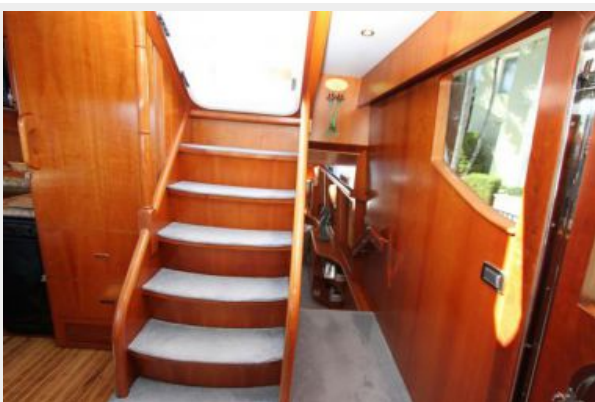


Pilothouse



galley



**Helm****Master**

Master**Master****Master head****Hallway**

Guest**Guest****Guest head****Guest head**

VIP



VIP



VIP head



VIP head



Bow



Bow



Bow





Flybridge





Flybridge bar



CONTACTS

Andrey Shestakov, leading yacht broker of the sales department of Shestakov Yacht Sales Inc. Shestakov Yacht Sales Inc., the official representative of the Miami/Fort Lauderdale FL headquarters.

Contact details

Email:
andrey@shestakovyachtsales.com

Web: shestakovyachtsales.com/en/

Telephones

USA: **+1(954)274-4435**

Office hours

Monday – Saturday: **9:00 - 21:00 EDT**

Sunday: **closed**

Address



Harbour Towne Marina, 850 NE 3rd St,
STE 213, Dania, FL 33004