

## LILLY PAD — HATTERAS



**Builder:** HATTERAS

**Year Built:** 1983

**Model:** Motor Yacht

**Price:** PRICE ON APPLICATION

**Location:** United States

**LOA:** 53' 0" (16.15m)

**Beam:** 15' 10" (4.83m)

**Min Draft:** 4' 0" (1.22m)

**Max Draft:** 4' 6" (1.37m)

**Cruise Speed:** 15 Kts. (17 MPH)

**Max Speed:** 17 Kts. (20 MPH)

Our experienced yacht broker, Andrey Shestakov, will help you choose and buy a yacht that best suits your needs **Lilly Pad — HATTERAS** from our catalogue. Presently, at Shestakov Yacht Sales Inc., we have a wide variety of yachts available on our sale's list. We also work in close contact with all the big yacht manufacturers from all over the world.

If you would like to buy a yacht **Lilly Pad — HATTERAS** or would like help answering any questions concerning purchasing, selling or chartering a yacht, please call **+1(954)274-4435**

# TABLE OF CONTENTS

TABLE OF CONTENTS	2
SPECIFICATIONS	4
Basic Information	4
Dimensions	4
Speed, Capacities and Weight	4
Accommodations	4
Hull and Deck Information	4
Engine Information	5
DETAILED INFORMATION	6
53 Extended Deckhouse Features	6
Salon/Dining	6
Pilothouse	6
Flybridge	7
Galley	7
Accommodations	7
Electrical System	8
Electronics & Navigation Equipment	9
Engines & Mechanical Details	9
Deck and Hull	10
SPECIAL FEATURES	10
EXCLUSIONS	11
Exclusions	11
Disclaimer	11
PHOTOS	12
Pilothouse Helm	12
Salon - Forward	12
Salon - Starboard side	12
Salon - Aft	12

Forward Guest Stateroom	13
Forward Guest Bathroom	13
VIP Guest Stateroom	13
VIP Guest Stateroom	13
VIP Bathroom	13
Master Bathroom	13
Master Stateroom	14
Master Stateroom	14
Galley - Down	14
Dinette - Opposite Galley	14
Dinette - looking up to pilothouse	14
Profile	14
Flybridge Helm	15
Flybridge Seating	15
Flybridge Seating	15
Bow Seating	15
Aft Deck	15
Portside Profile at Dock	15
Aft Profile at Dock	16
Layouts	16
CONTACTS	17
Contact details	17
Telephones	17
Office hours	17
Address	17

# SPECIFICATIONS

## Basic Information

**Category:** Motor Yacht

**Sub Category:** Pilothouse

**Model Year:** 1983

**Year Built:** 1983

**Country:** United States

## Dimensions

**LOA:** 53' 0" (16.15m)

**LWL:** 47' 3" (14.40m)

**Beam:** 15' 10" (4.83m)

**Min Draft:** 4' 0" (1.22m)

**Max Draft:** 4' 6" (1.37m)

**Clearance:** 17' 2" (5.23m)

**MFG Length:** 53' 1" (16.18m)

## Speed, Capacities and Weight

**Cruise Speed:** 15 Kts. (17 MPH)

**Max Speed:** 17 Kts. (20 MPH)

**Displacement:** 57000 Pounds

**Water Capacity:** 287 Gallons

**Holding Tank:** 150 Gallons

**Fuel Capacity:** 700 Gallons

## Accommodations

**Total Cabins:** 3

**Total Berths:** 5

**Total Heads:** 3

## Hull and Deck Information

**Hull Material:** Fiberglass

## Engine Information

---

**Engines:** 2

**Manufacturer:** Detroit Diesel

**Model:** 8V71

**Engine Type:** Inboard

**Fuel Type:** Diesel

---

# DETAILED INFORMATION

---

---

## 53 Extended Deckhouse Features

---

The 53 Extended Deckhouse was first introduced by Hatteras in 1983 and immediately became a hit!

The main deck level floorplan features an extended full-width Main Salon with almost twice as much interior space as other yachts in her class. There is an interior access ladder to the Flybridge and a partition that provides privacy between the Pilothouse and the Salon. A small open Aft Deck provides access for easy line-handling and can easily accommodate a small table and chairs for "al fresco" dining and enjoyment.

Below deck accommodations include three Staterooms and three heads, Galley and Dinette, and separate walk-in Engine Rooms.

The large Flybridge is perfect for entertaining, with plenty of space and a full helm console.

LILLY PAD is an excellent example of this popular Hatteras motoryacht. She has been well cared for with many upgrades and updates over the years. Not to be overlooked by any prospective buyer in the market for a Hatteras ED motoryacht.

---

## Salon/Dining

---

- Full beam Salon with Dining area forward
- Double doors, teak, from Salon to Aft Deck
- Built-in cabinetry for entertainment center and generous storage on forward bulkhead
- Wet bar and icemaker
- Entertainment center with TV, VCR, CD/DVD, AM/FM and satellite receiver
- Classic teak joinery throughout yacht
- Glass-topped dining table and 4 upholstered chairs
- Sofa with toss pillows, starboard
- End tables & lamps
- 2 occasional chairs and ottoman stool/table, port side, aft
- Large windows for scenic viewing
- Mini blinds and curtains on windows

---

## Pilothouse

---

- Forward of the Salon
- Port and starboard sliding doors access the foredeck
- Parquet sole

- Teak ladder to Flybridge
- 28" stainless steel wheel
- Bench seating with chart storage
- Distribution panels
- Navigation equipment

## Flybridge

---

- Electric dinghy davit
- Dome antenna
- Radar arch
- Bimini top with plexiglass front and 2 sides
- 2 Helm chairs, (1 new)
- Wrap-around bench seating

## Galley

---

- Galley accessed by staircase forward of the Pilothouse and 2 steps down
- Dinette, opposite starboard, with upholstered bench seating
- Storage beneath bench seats
- Side-by-side refrigerator freezer with in-door water and ice
- 4-burner electric stove
- Microwave
- Dishwasher
- Sink with single lever faucet
- Ample work space with Corian countertops
- Lighting
- Appliances upgraded before current owner

## Accommodations

---

### BOW STATEROOM:

- Over/under single berths
- Toss pillows and bedspreads
- Reading lamps
- Large hanging locker
- TV
- Drawer storage
- Opening ports
- Hatch/skylight

- Private ensuite head, mirrored cabinet, vanity and sink , and stall shower

LAUNDRY- Washer and Dryer in separate closet

### **GUEST STATEROOM:**

- Lower twin beds
- Toss pillows and bedspreads
- Reading lamps
- Built-in night stand
- Large hanging locker
- Drawer storage under each berth
- Guest head opposite with mirrored storage cabinet, vanity and sink, and stall shower

### **MASTER STATEROOM - AFT:**

- Queen bed
- Toss pillows and bedspread
- Built-in drawer storage, port and starboard
- Large cedar-lined wardrobe closet
- TV
- Lighted vanity/desk with mirror, ample counter space
- 4 opening ports - port, starboard, and two at transom (escape hatches)
- Master head ensuite with stall shower, mirrored cabinet, vanity and sink, and opening port

## **Electrical System**

---

- 20 kW Kohler generator
- Generator housed under Galley sole
- Remote generator control panels
- 120/240 volt AC electrical system
- 12/32 volt DC electrical system
- 2 banks of 32 volt marine batteries, new 2014
- Battery parallel switch system
- 32 volt battery charger
- 12 volt battery charger
- Reverse-cycle air conditioning
- Shore power inlets, port and starboard?
- Electrical distribution panels
- Systems monitor: engine oil pressure, engine coolant temp, drive oil temp, AC power loss, high bilge water, fire warning, fire extinguisher system discharge



---

## Electronics & Navigation Equipment

---

### PILOTHOUSE:

- Furuno Net-Nav GPS, chartplotter & radar
- Simrad auto pilot
- Glendinning engine synchronizers
- VHF radio
- Large compass
- Depthsounder
- Rudder angle indicator, Simrad synchronizer
- Remote search light control only; no search light

### FLYBRIDGE HELM STATION:

- Furuno Net-Nav GPS, chartplotter & radar
- Simrad auto pilot
- Glendinning engine synchronizers
- VHF radio
- Large compass
- Depthsounder
- Remote search light control only; no search light

---

## Engines & Mechanical Details

---

- 2 x 450 HP Detroit Diesel 8V71 diesel engines: Total Engine hours: Port: 3600  
Starboard: 3600; Major overhaul at 3200 hours; 400 hours SMOH (as of January 2015)
- Split engine rooms for easy maintenance access
- Split shafts
- 2 spare propellers
- Watermaker
- 4 high volume bilge pumps
- Galley Maid anchor winch
- 3 Galley Maid heads (newly rebuilt)
- Trim tabs
- Port and starboard water connections with pressure reducing valve
- 4 Automatic bilge pumps
- 2 Bilge blowers
- Fire extinguishing system (Kidde) for engine room and generator compartment with automatic and remote manual controls
- Engine-driven air compressor for horn
- Fuel tank selector manifold on tanks in sole
- Dockside water connections with pressure reducing valves
- Sea valves on all underwater thru-hulls with electric bonding throughout

- 2" stainless steel propeller shafts
- Bronze struts with rubber strut bearings
- Bronze rudders
- 4-blade bronze propellers
- Fiberglass fuel and water tanks
- Dual Racor filters
- Airsep filter system
- Glendinning engine synchronizer
- Engine room blowers
- Water heater
- Pressure water system
- Emergency shut down system

## Deck and Hull

---

- Navigation lights
- Horn
- Ship's bell
- Fiberglass hull and superstructure
- New bottom 2007: peeled and epoxy coated
- Exterior last painted 1998 (approx date)
- Canvas covers for flybridge and bow seating new 2007
- Boat has been hauled and shrink-wrapped for winter storage every year since 2005
- Built-in seating on foredeck with cushions and covers
- 2 Fiberglass stowage boxes on foredeck
- Boarding ramp and ladder
- Fiberglass swim platform
- Swim ladder
- Transom ladder
- Windlass with remote control
- Bow pulpit
- Anchor, chain & rode
- Varnished teak handrails
- Stainless steel stanchions
- Lifelines
- Safety package including PFDs, flares, life ring
- Non-skid painted decks
- Bimini top with plexiglass front and 2 sides
- Aft Deck sun shade

## SPECIAL FEATURES

---

- Collectible artwork on walls of Galley and Guest Stateroom

## EXCLUSIONS

---

- Owner's personal items are excluded from sale.

## Exclusions

---

Owner's personal belongings.

## Disclaimer

---

The Company offers the details of this vessel or yacht in good faith but cannot guarantee or warrant the accuracy of this information nor warrant the condition of the vessel. A buyer should instruct his representatives, agents, or his surveyors, to investigate such details as the buyer desires validated. This vessel or yacht is offered subject to prior sale, price change, or withdrawal without notice.

# PHOTOS

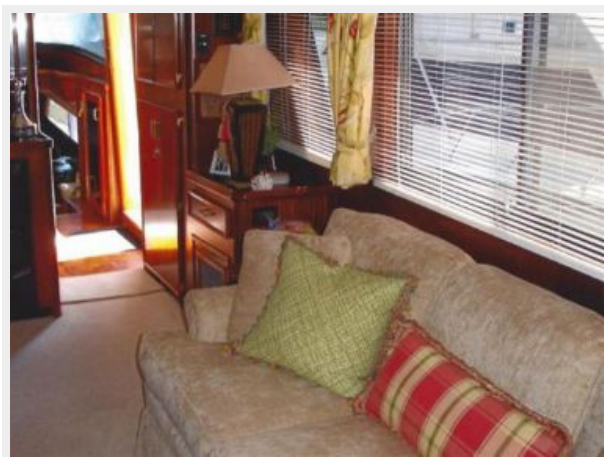
**Pilothouse Helm**



**Salon - Forward**



**Salon - Starboard side**



**Salon - Aft**



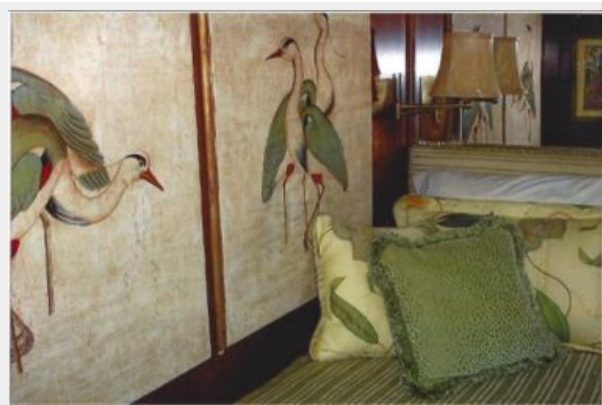
**Forward Guest Stateroom**



**Forward Guest Bathroom**



**VIP Guest Stateroom**



**VIP Guest Stateroom**



**VIP Bathroom**



**Master Bathroom**





**Master Stateroom**



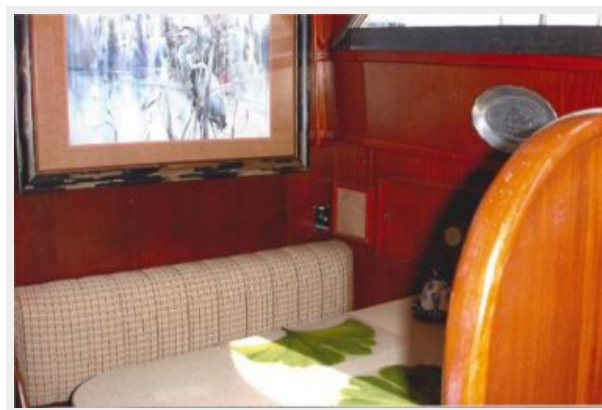
**Master Stateroom**



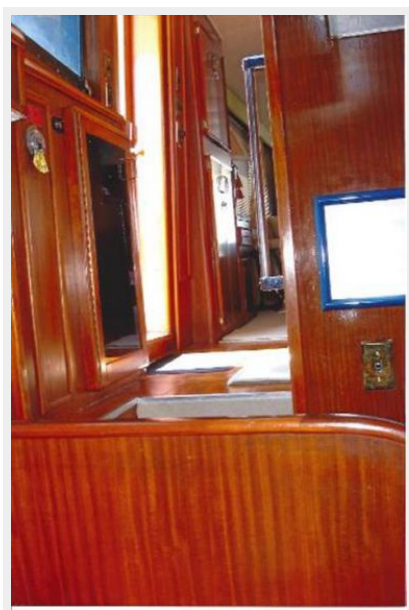
**Galley - Down**



**Dinette - Opposite Galley**



**Dinette - looking up to pilothouse**



**Profile**



**Flybridge Helm**



**Flybridge Seating**



**Flybridge Seating**



**Bow Seating**



**Aft Deck**



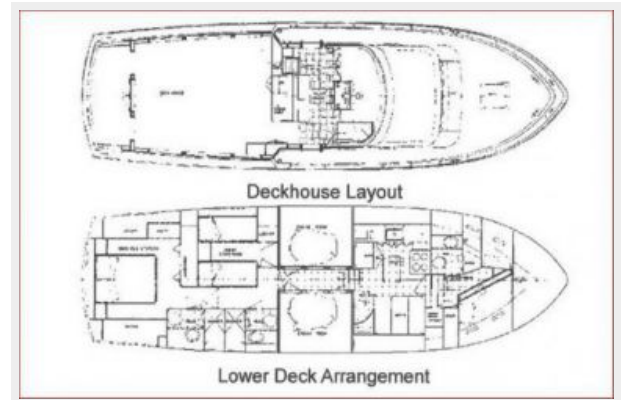
**Portside Profile at Dock**



## Aft Profile at Dock



## Layouts





# CONTACTS

---

Andrey Shestakov, leading yacht broker of the sales department of Shestakov Yacht Sales Inc. Shestakov Yacht Sales Inc., the official representative of the Miami/Fort Lauderdale FL headquarters.

## Contact details

---

Email: **andrey@shestakovyachtsales.com**

Web: [shestakovyachtsales.com/en/](http://shestakovyachtsales.com/en/)

## Telephones

---

USA: **+1(954)274-4435**

## Office hours

---

Monday – Saturday: **9:00 - 21:00 EDT**

Sunday: **closed**

## Address

---



Harbour Towne Marina, 850 NE 3rd St,  
STE 213, Dania, FL 33004