

LILLY PAD — HATTERAS



Судостроитель: HATTERAS

Год постройки: 1983

Модель: Моторная яхта

Цена: ЦЕНА ЯХТЫ ПО ЗАПРОСУ

Местонахождение: United States

Длина общая: 53' 0" (16.15m)

Ширина: 15' 10" (4.83m)

Мин. осадка: 4' 0" (1.22m)

Макс. осадка: 4' 6" (1.37m)

Крейс. скорость: 15 Kts. (17 MPH)

Макс. скорость: 17 Kts. (20 MPH)

Купить **Lilly Pad — HATTERAS** а также выбрать подходящую вам яхту из нашего каталога яхт вам поможет опытный яхтенный брокер Андрей Шестаков. На сегодняшний день компания **Shestakov Yacht Sales Inc.** имеет большое количество яхт в собственном списке продаж, а также тесно сотрудничает со всеми крупными яхтенными производителями по всему миру.

Для того чтобы купить яхту **Lilly Pad — HATTERAS** а также проконсультироваться по любому вопросу связанному с покупкой, продажей, чартером яхт позвоните по телефону **+7(918)465-66-44**.

ОГЛАВЛЕНИЕ

ОГЛАВЛЕНИЕ	2
ХАРАКТЕРИСТИКИ	4
Основная информация	4
Размеры	4
Скорость, вместимость и масса	4
Размещение	4
Корпус и палуба	5
Информация о двигателе	5
ПОДРОБНОЕ ОПИСАНИЕ	6
53 Extended Deckhouse Features	6
Salon/Dining	6
Pilothouse	6
Flybridge	7
Galley	7
Accommodations	7
Electrical System	8
Electronics & Navigation Equipment	9
Engines & Mechanical Details	9
Deck and Hull	10
SPECIAL FEATURES	10
EXCLUSIONS	11
Исключения	11
Отказ от ответственности	11
ФОТОГРАФИИ	12
Pilothouse Helm	12
Salon - Forward	12
Salon - Starboard side	12
Salon - Aft	12

Forward Guest Stateroom	13
Forward Guest Bathroom	13
VIP Guest Stateroom	13
VIP Guest Stateroom	13
VIP Bathroom	13
Master Bathroom	13
Master Stateroom	14
Master Stateroom	14
Galley - Down	14
Dinette - Opposite Galley	14
Dinette - looking up to pilothouse	14
Profile	14
Flybridge Helm	15
Flybridge Seating	15
Flybridge Seating	15
Bow Seating	15
Aft Deck	15
Portside Profile at Dock	15
Aft Profile at Dock	16
Layouts	16
КОНТАКТЫ	17
Контактная информация	17
Телефоны	17
Время работы	17
Адрес	17

ХАРАКТЕРИСТИКИ

Основная информация

Тип судна: Моторная яхта

Подкатегория: Pilothouse

Модельный год: 1983

Год постройки: 1983

Страна: United States

Размеры

Длина общая: 53' 0" (16.15m)

Длина по ватерлинии: 47' 3" (14.40m)

Ширина: 15' 10" (4.83m)

Мин. осадка: 4' 0" (1.22m)

Макс. осадка: 4' 6" (1.37m)

Трапы: 17' 2" (5.23m)

Длина привального бруса: 53' 1"
(16.18m)

Скорость, вместимость и масса

Крейс. скорость: 15 Kts. (17 MPH)

Макс. скорость: 17 Kts. (20 MPH)

Водоизмещение: 57000 Pounds

Вместимость воды: 287 Gallons

Вместимость сточного бака: 150 Gallons Объем топливного бака: 700 Gallons

Размещение

Всего кают: 3

Всего коек: 5

Всего ком. состава: 3

Корпус и палуба

Материал корпуса: Fiberglass

Информация о двигателе

Двигатели: 2

Производитель: Detroit Diesel

Модель: 8V71

Тип двигателя: Inboard

Тип топлива: Diesel

ПОДРОБНОЕ ОПИСАНИЕ

53 Extended Deckhouse Features

The 53 Extended Deckhouse was first introduced by Hatteras in 1983 and immediately became a hit!

The main deck level floorplan features an extended full-width Main Salon with almost twice as much interior space as other yachts in her class. There is an interior access ladder to the Flybridge and a partition that provides privacy between the Pilothouse and the Salon. A small open Aft Deck provides access for easy line-handling and can easily accommodate a small table and chairs for "al fresco" dining and enjoyment.

Below deck accommodations include three Staterooms and three heads, Galley and Dinette, and separate walk-in Engine Rooms.

The large Flybridge is perfect for entertaining, with plenty of space and a full helm console.

LILLY PAD is an excellent example of this popular Hatteras motoryacht. She has been well cared for with many upgrades and updates over the years. Not to be overlooked by any prospective buyer in the market for a Hatteras ED motoryacht.

Salon/Dining

- Full beam Salon with Dining area forward
- Double doors, teak, from Salon to Aft Deck
- Built-in cabinetry for entertainment center and generous storage on forward bulkhead
- Wet bar and icemaker
- Entertainment center with TV, VCR, CD/DVD, AM/FM and satellite receiver
- Classic teak joinery throughout yacht
- Glass-topped dining table and 4 upholstered chairs
- Sofa with toss pillows, starboard
- End tables & lamps
- 2 occasional chairs and ottoman stool/table, port side, aft
- Large windows for scenic viewing
- Mini blinds and curtains on windows

Pilothouse

- Forward of the Salon
- Port and starboard sliding doors access the foredeck
- Parquet sole

- Teak ladder to Flybridge
- 28" stainless steel wheel
- Bench seating with chart storage
- Distribution panels
- Navigation equipment

Flybridge

- Electric dinghy davit
- Dome antenna
- Radar arch
- Bimini top with plexiglass front and 2 sides
- 2 Helm chairs, (1 new)
- Wrap-around bench seating

Galley

- Galley accessed by staircase forward of the Pilothouse and 2 steps down
- Dinette, opposite starboard, with upholstered bench seating
- Storage beneath bench seats
- Side-by-side refrigerator freezer with in-door water and ice
- 4-burner electric stove
- Microwave
- Dishwasher
- Sink with single lever faucet
- Ample work space with Corian countertops
- Lighting
- Appliances upgraded before current owner

Accommodations

BOW STATEROOM:

- Over/under single berths
- Toss pillows and bedspreads
- Reading lamps
- Large hanging locker
- TV
- Drawer storage
- Opening ports
- Hatch/skylight

- Private ensuite head, mirrored cabinet, vanity and sink , and stall shower

LAUNDRY- Washer and Dryer in separate closet

GUEST STATEROOM:

- Lower twin beds
- Toss pillows and bedspreads
- Reading lamps
- Built-in night stand
- Large hanging locker
- Drawer storage under each berth
- Guest head opposite with mirrored storage cabinet, vanity and sink, and stall shower

MASTER STATEROOM - AFT:

- Queen bed
- Toss pillows and bedspread
- Built-in drawer storage, port and starboard
- Large cedar-lined wardrobe closet
- TV
- Lighted vanity/desk with mirror, ample counter space
- 4 opening ports - port, starboard, and two at transom (escape hatches)
- Master head ensuite with stall shower, mirrored cabinet, vanity and sink, and opening port

Electrical System

- 20 kW Kohler generator
- Generator housed under Galley sole
- Remote generator control panels
- 120/240 volt AC electrical system
- 12/32 volt DC electrical system
- 2 banks of 32 volt marine batteries, new 2014
- Battery parallel switch system
- 32 volt battery charger
- 12 volt battery charger
- Reverse-cycle air conditioning
- Shore power inlets, port and starboard?
- Electrical distribution panels
- Systems monitor: engine oil pressure, engine coolant temp, drive oil temp, AC power loss, high bilge water, fire warning, fire extinguisher system discharge

Electronics & Navigation Equipment

PILOTHOUSE:

- Furuno Net-Nav GPS, chartplotter & radar
- Simrad auto pilot
- Glendinning engine synchronizers
- VHF radio
- Large compass
- Depthsounder
- Rudder angle indicator, Simrad synchronizer
- Remote search light control only; no search light

FLYBRIDGE HELM STATION:

- Furuno Net-Nav GPS, chartplotter & radar
- Simrad auto pilot
- Glendinning engine synchronizers
- VHF radio
- Large compass
- Depthsounder
- Remote search light control only; no search light

Engines & Mechanical Details

- 2 x 450 HP Detroit Diesel 8V71 diesel engines: Total Engine hours: Port: 3600
Starboard: 3600; Major overhaul at 3200 hours; 400 hours SMOH (as of January 2015)
- Split engine rooms for easy maintenance access
- Split shafts
- 2 spare propellers
- Watermaker
- 4 high volume bilge pumps
- Galley Maid anchor winch
- 3 Galley Maid heads (newly rebuilt)
- Trim tabs
- Port and starboard water connections with pressure reducing valve
- 4 Automatic bilge pumps
- 2 Bilge blowers
- Fire extinguishing system (Kidde) for engine room and generator compartment with automatic and remote manual controls
- Engine-driven air compressor for horn
- Fuel tank selector manifold on tanks in sole
- Dockside water connections with pressure reducing valves
- Sea valves on all underwater thru-hulls with electric bonding throughout

- 2" stainless steel propeller shafts
- Bronze struts with rubber strut bearings
- Bronze rudders
- 4-blade bronze propellers
- Fiberglass fuel and water tanks
- Dual Racor filters
- Airsep filter system
- Glendinning engine synchronizer
- Engine room blowers
- Water heater
- Pressure water system
- Emergency shut down system

Deck and Hull

- Navigation lights
- Horn
- Ship's bell
- Fiberglass hull and superstructure
- New bottom 2007: peeled and epoxy coated
- Exterior last painted 1998 (approx date)
- Canvas covers for flybridge and bow seating new 2007
- Boat has been hauled and shrink-wrapped for winter storage every year since 2005
- Built-in seating on foredeck with cushions and covers
- 2 Fiberglass stowage boxes on foredeck
- Boarding ramp and ladder
- Fiberglass swim platform
- Swim ladder
- Transom ladder
- Windlass with remote control
- Bow pulpit
- Anchor, chain & rode
- Varnished teak handrails
- Stainless steel stanchions
- Lifelines
- Safety package including PFDs, flares, life ring
- Non-skid painted decks
- Bimini top with plexiglass front and 2 sides
- Aft Deck sun shade

SPECIAL FEATURES

- Collectible artwork on walls of Galley and Guest Stateroom

EXCLUSIONS

- Owner's personal items are excluded from sale.

Исключения

При продаже яхты исключаются личные вещи владельца.

Отказ от ответственности

Компания предоставляет описание судна или яхты добросовестно, но не может гарантировать точность этой информации, а также не ручается за техническое состояние. Покупатель должен проинструктировать своих агентов или оценщиков исследовать представленную информацию более подробно, по собственному желанию. Продажа судна или яхты, изменение цены или снятие с продажи будет происходить без предварительного уведомления.

ФОТОГРАФИИ

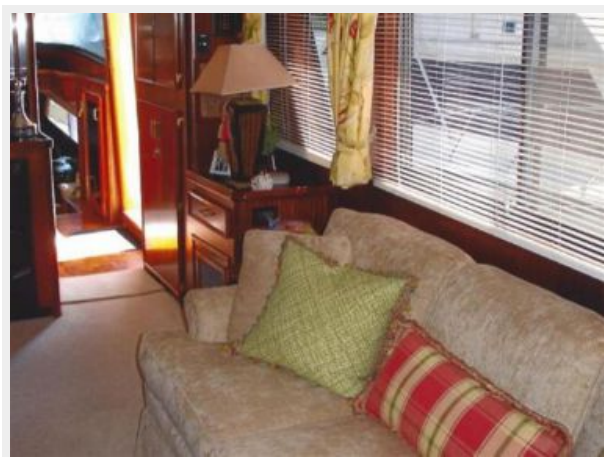
Pilothouse Helm



Salon - Forward



Salon - Starboard side



Salon - Aft



Forward Guest Stateroom



Forward Guest Bathroom



VIP Guest Stateroom



VIP Guest Stateroom



VIP Bathroom



Master Bathroom



Master Stateroom



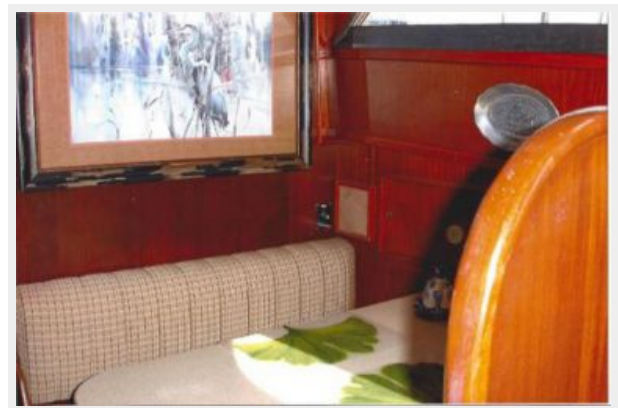
Master Stateroom



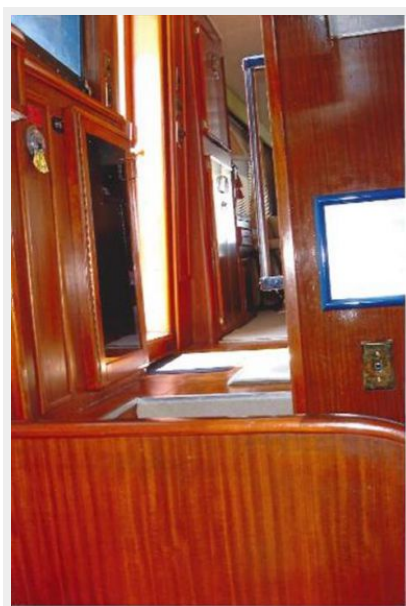
Galley - Down



Dinette - Opposite Galley



Dinette - looking up to pilothouse



Profile



Flybridge Helm



Flybridge Seating



Flybridge Seating



Bow Seating



Aft Deck



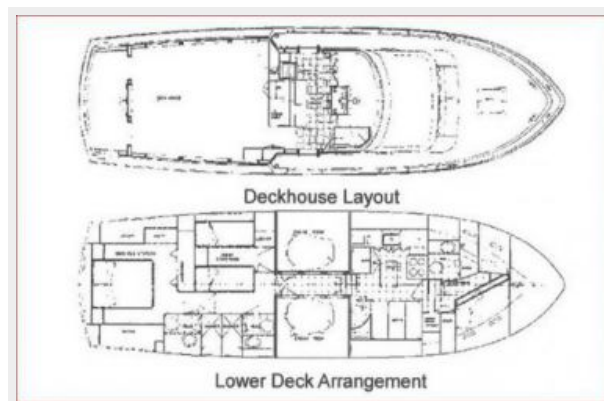
Portside Profile at Dock



Aft Profile at Dock



Layouts



КОНТАКТЫ

Андрей Шестаков (Andrey Shestakov) – ведущий яхтенный брокер отдела продаж яхт и судов компании Shestakov Yacht Sales Inc. Официальный представитель Shestakov Yacht Sales Inc. для русскоговорящих клиентов в центральном офисе компании в Майами/Форт Лодердейл/Флорида/США.

Контактная информация

Email: andrey@shestakovyachtsales.com

Web: shestakovyachtsales.com

Телефоны

Краснодарский край: **+7(918)465-66-44**

США, Майами, Флорида: **+1(954)274-4435**

Время работы

Понедельник – Суббота: **9:00 - 21:00**
EDT

Воскресенье: **Закрито**

Адрес



Harbour Towne Marina, 850 NE 3rd St,
STE 213, Dania, FL 33004