

TRIPLE TREAT — OCEAN ALEXANDER



Судостроитель: OCEAN ALEXANDER

Год постройки: 2011

Модель: Моторная яхта

Цена: **ЦЕНА ЯХТЫ ПО ЗАПРОСУ**

Местонахождение: United States

Длина общая: 70' 0" (21.34m)

Ширина: 18' 6" (5.64m)

Мин. осадка: 5' 0" (1.52m)

Макс. осадка: 5' 5" (1.65m)

Крейс. скорость: 22 Kts. (25 MPH)

Купить Triple Treat — OCEAN ALEXANDER а также выбрать подходящую вам яхту из нашего каталога яхт вам поможет опытный яхтенный брокер Андрей Шестаков. На сегодняшний день компания Shestakov Yacht Sales Inc. имеет большое количество яхт в собственном списке продаж, а также тесно сотрудничает со всеми крупными яхтенными производителями по всему миру.

Для того чтобы купить яхту Triple Treat — OCEAN ALEXANDER а также проконсультироваться по любому вопросу связанному с покупкой, продажей, чартером яхт позвоните по телефону **+7(918)465-66-44**.

ОГЛАВЛЕНИЕ

ОГЛАВЛЕНИЕ	2
ХАРАКТЕРИСТИКИ	5
Основная информация	5
Размеры	5
Скорость, вместимость и масса	5
Размещение	5
Корпус и палуба	5
Информация о двигателе	6
ПОДРОБНОЕ ОПИСАНИЕ	7
Construction	7
Accommodations/ Interior Decor	8
Mechanical	10
Electrical	11
Audio/ Visual	13
Main Deck & Flybridge	13
Pilothouse/ Dinette	14
Salon	14
Plumbing	15
Disclaimer	15
Исключения	16
Отказ от ответственности	16
ФОТОГРАФИИ	17
Aft Starboard View	17
Bow View	17
Aft Starboard View	17
Master Stateroom Hullside Windows	17
Aft View	18
Port Walkaround	18

Coaming Gates	18
Bow View	18
Bow Lounge Chairs	18
Bow Lounge Chairs	18
Bow Lounge Chairs	19
Aft Control Station	19
Windlass	19
Bridge Seating	19
Bridge Seating	19
Bridge Helm	19
Bridge Helm	20
Cockpit	20
Salon	20
Salon	20
Salon Bar	20
Steps To Master Stateroom	20
Galley	21
Galley	21
Salon Wine Cooler	21
Dinette	21
Dinette	21
Dinette	21
Galley	22
Helm Station	22
Control Panel	22
Helm Station	22
Master Stateroom	22
Master Stateroom	22
Master Stateroom	23

Master Stateroom	23
Master Stateroom	23
Bow Stateroom	23
Port Stateroom	23
Bow Stateroom TV	23
Bow Head	24
Bow Head	24
Master Head	24
Master Her Head	24
Washer/ Dryer	25
Engine Room	25
Dual Generator	25
Port Engine	25
Generator	26
Hydraulic System	26
Fuel Polishing System	26
Water Maker (1,200 dal/ day)	26
Crew Area	27
Crew Area	27
Crew Area	27
Crew Area	27
Crew Head	27
Crew Area	27
КОНТАКТЫ	28
Контактная информация	28
Телефоны	28
Время работы	28
Адрес	28

ХАРАКТЕРИСТИКИ

Основная информация

Тип судна: Моторная яхта

Модельный год: 2011

Год постройки: 2011

Страна: United States

Размеры

Длина общая: 70' 0" (21.34m)

Ширина: 18' 6" (5.64m)

Мин. осадка: 5' 0" (1.52m)

Макс. осадка: 5' 5" (1.65m)

Скорость, вместимость и масса

Крейс. скорость: 22 Kts. (25 MPH)

Водоизмещение: 109540 Pounds

Вместимость воды: 300 Gallons

Объем топливного бака: 1400 Gallons

Размещение

Всего кают: 3

Всего коек: 4

Спальные места: 6

Всего ком. состава: 5

Каюты экипажа: 1

Койки экипажа: 1

Спальных мест экипажа: 1

Комм. состав экипажа: 1

Корпус и палуба

Материал корпуса: Fiberglass

Информация о двигателе

Двигатели: 2

Производитель: Caterpillar

Модель: C-18

Тип топлива: Diesel

ПОДРОБНОЕ ОПИСАНИЕ

Construction

GENERAL:

- Vinylester resin
- Airex® C70.90 PVC core on hull sides (closed cell, cross-linked polymer foam w/ highest elongation in its class for great impact strength. Sound and temperature isolation w/ self-extinguishing properties)
- Carbon reinforced structural fiberglass stringers filled with high-density foam
- Reinforced collision bulkhead
- S/S hardware
- 2" elliptical 316 Stainless steel handrails & stanchions, main deck. 1-1/2" on FB
- S/S oval port lights
- S/S cleats & hawse holes
- Seacocks and raw water strainers on all intakes
- All exterior hardware to be S/S 316 or better and to manufacturer requirements
- Ocean Alexander employs various techniques to reduce sound and vibration. Focusing on providing a quiet and comfortable yachting environment through various proprietary techniques of controlling sound and noise transmission. Some of these techniques include, multiple insulation barriers including reflective materials, absorptive materials, dampening materials, air pockets and flexible and isolation mounts. Ultimately resulting in vibration/sounds levels that are industry leading and at times 1/2 to 1/10 of ISO-6954 requirements

HULL / BOTTOM:

- Hand-laid, gel-coated fiberglass hull
- Solid fiberglass hull bottom
- White vinyl rub rail S/S insert
- Two coats of Seahawk primer, hi-build epoxy barrier coat and covered with three coats of Seahawk self-polishing bottom paint
- Bronze through-hull fittings

DECK / PILOTHOUSE:

- Chain locker in bow with hinged access hatches
- Removable swimming ladder
- White non-skid fiberglass decks
- Port and starboard boarding gates
- Ventilation hatch fwd. trunk top
- Deck lights, 24V
- Fiberglass staircase from cockpit to Flybridge

- Fiberglass swim platform w/ Euro transom
- S/S swivel anchor light bracket

Accomodations/ Interior Decor

MASTER STATEROOM:

- King-sized berth
- Ultraleather-upholstered headboard
- Two nightstands with countertop
- Drawers under bed
- Bureau w/ chest of drawers
- Private head with stall shower
- Dressing mirror
- Safe in hanging locker
- Cedar-lined, full-height hanging locker with auto lighting
- Fixed windows on hull side

FORWARD GUEST STATEROOM:

- Queen-sized berth
- Two drawers under bed
- Dressing mirror
- S/S oval port lights
- Cedar-lined hanging lockers with automatic lighting
- One head w/ stall shower
- Chest of drawers
- Mirror headboard

MIDSHIPS GUEST STATEROOM:

- Double berth
- S/S rectangular port light
- Cedar-lined hanging locker
- Full height hanging locker
- One head w/ stall shower

HEADS:

- Wood head floor(except crew head : nonskid) **UPGRADE**
- Granite shower floor(except crew shower : nonskid) **UPGRADE**
- Wood walls & cabinets with double bull-nose granite counter tops
- China sink
- Grohe™ faucets for sink and shower
- S/S rectangular port light

- Mirrored sliding cabinet door under head port light
- Seamless fiberglass stall shower w/ one-piece glass door. Industry leading seamless one-piece shower stall design provide long term protection against moisture, water intrusion behind the shower panels - leading to foul odors and water damage
- Custom bathroom fixtures
- Granite/Marble in shower floor, shower seat and wall trim(except crew quarter)
- One medicine cabinet

GALLEY:

- Granite countertops **UPGRADE**
- Wood panel and cabinetry
- Wood flooring **UPGRADE**
- Storage cabinets and drawers
- “Drawer type” shelves in large galley cabinet
- Franke™ Double sinks with pull out faucet
- Overhead dish locker with access on both sides
- Dedicated trash compartment
- 36” JennAir™ Custom Panel French Door™ Refrigerator
- 30" JennAir Over-the Range Microwave with Speed-Cook Convection
- 24” Fisher/ Paykel™ dishwasher
- 21-1/2” Kenyon electric cook top
- 12” Whirlpool™ trash compactor **UPGRADE**

INTERIOR DÉCOR:

- Wood paneling and cabinetry
- European door handle or equal
- Stainless steel hardware
- Satin varnish for interior finish
- Removable headliner on entire boat
- Push-button handles for drawers & cupboards
- Round-top corners cabin, entrance doors
- Mattresses for berths **UPGRADE**
- Flip-up berth for storage
- Cornice box and all interior window frames with rounded corners
- 2” bull-nose cabinet tops
- Chamois (335-3024) for lower walkway walls
- Maytag™ 2400AWW stacked washer/ dryer (Commercial quality, Energy star washer/dryer w/ generous 2.4 cu. ft. capacity)
- Hanging lockers with dual locking mechanism
- Painted flooring prepared for carpet, except for Amtico® plank flooring in crew quarter (including head) and wood flooring in PH and heads
- Wood flooring except for crew quarter
- Tecma™ heads

- Air extraction in each head shall be by low noise extraction fans, switched separately from lights. Fans to discharge air outside.
- Vent blower

Mechanical

MAIN ENGINES:

- CAT1150HP engine **WARRANTY UNTIL 5/4/2016 1,500 hours**
- Two control stations: FB & PH, with complete engine instrumentation with lighted switches
- Engine hour meter
- Electric engine controls
- Engine alarm system (oil and temperature)
- Delta T intake/ exhaust fans with demister to eliminate moisture from the intake airflow to keep dry in machinery spaces. **UPGRADE**
- Wet exhaust and including water temperature, oil pressure, hour meter and start/ stop controls in engine room and remote start/ stop controls in the pilothouse
- Underwater exhaust system
- S/S engine beds
- S/S rail on side of engine
- Oil changing system for both engines and genset **UPGRADE**

GENERATOR:

- Northern Lights® 20 KW (110V/60HZ or 220V/50HZ) genset includes 5 year/2,000 hour total warranty **DUAL**
- Generator exhausts to be water-drop type per “Centek”, “Marine Exhaust Co.” or equal
- Generator set resiliently mounted and installed with sound shield
- Generator with fuel/ water and gas/ water separator

STEERING / CONTROL:

- Hydraulic steering system
- S/S rudders
- Bronze struts w/ cutlass bearing
- High performance, computer-designed and machined class “S” propellers
- Zincs on rudders, shafts & trim tabs
- S/S steering wheel inside & on FB
- 3 valves in steering system for autopilot
- Two Stidd® mechanical helm seats on F/B (white x2) **UPGRADE**
- One Stidd® mechanical helm seat in Pilothouse (black) **UPGRADE**
- Third control in cockpit (engine and thruster) **UPGRADE**
- Dripless engine shaft seal logs and rudder posts

WINDLASS / MOORING:

- Hydraulic windlass, Maxwell® VWC3500C
- Stainless steel plow type anchor 80 lbs w/ 300ft anchor chain (3/8" HT) & chain stopper
- Chain counter
- Kahlenberg™ heavy duty single air horn

THRUSTER / STABILIZERS:

- Hydraulic Keypower® bow thruster (25HP) and stern (15HP)
- Hydraulic Keypower® stabilizer (9 Sq. ft. x 2) **UPGRADE**
- Proportional control for thruster

OTHER:

- Spare conduit running from engine room to PH, engine room to FB and engine room to FB overhang (under)
- Color-coded piping for fuel, water and hydraulic systems
- Hydraulic 1500lbs davit (hydraulic boom, rotation and extension)
- Fire Boy™ Fire extinguisher system with engine-shutdown feature
- All engine room and machinery spaces shall be primed and top coated with polyurethane paint system
- Herone® rubber flooring in engine room
- Pantograph windshield wipers & washers w/ intermittent function
- Detailed stringers in engine room and lazarette
- Two S/S reinforcement brackets on engine-room ceiling
- S/S cap on transverse strings in central walkway
- Humphree® Interceptor with automatic trim optimization system (ATOS)
- Gulfcoast™ Fuel polishing system based on US Military Abrahams-M1 Tank design **UPGRADE**
- Seagull™ water purifier (ADEX design award winner w/ filtration to 0.1 microns & EPA certification for microbiological purification) **UPGRADE**

Electrical

BATTERY:

- Heavy-duty batteries (house banks: 735 AH, engine batteries: 550AH, genset batteries: 245AH)
- Battery paralleling system with control switch
- Service battery switch

- Engine battery isolation switches

AC / DC SYSTEM:

- AC outlet
- NMEA2000 BACKBONE w/ AC/ DC power installed (for future electronics / equipment communication network) **UPGRADE**
- AC/ DC distribution panel with magnetic circuit breakers
- Elect. panel w/ backlighting
- GFI (110V) AC outlet with SmartLock feature for operation error protection which exceeds UL requirements

Inverter Package:

- **Upgrade** Victron® 60AMP charger to inverter/charger (3000W/70AMP). Allowing for “silent night/nogenerator” inverting from DC Batteries to AC circuits (refrigeration, water pumps, select AC
- outlets, Audio/Video) + automatic switch for when AC power is available set to by-pass inverter. Dedicated Battery charger for start bank

BONDING SYSTEM:

- Bonding system w/ AC outlet throughout
- The vessel's bonding and grounding systems shall include copper straps secured to the hull and running the full length of the vessel parallel to centerline. Engines, generators, metallic through hulls, strainers, and pump bodies shall be connected to the bonding strap using 8 AWG wire minimum or equivalent

AIR CONDITIONING:

- Cruisair® compressors for central air conditioner, 6 units, total 122K BTU (Reverse Cycle capable for operation down to 40)
- Refrigerant type is accepted worldwide under the Montreal Protocols
- FB air condition 24,000 BTU **UPGRADE**

SHORE POWER CONNECTER:

- Shore power receptacle 2x50AMP in transom w/ 90ft cable master

LIGHTING:

- 24V lights in all compartments
- 24V LED lights (Aerospace quality, specially tuned color temperature for Ocean Alexander that last over 100,000+ hours)
- 24V ceiling lights, anti-explosion type in engine room

- International navigation lights
- 110V fluorescent lights or wiring only for 220V/ 50HZ system

OTHER:

- VOLT and AMP meters
- Marine-grade tinned copper wiring
- Vimar™ switches and outlets
- Blue Sea digital Multi-function meter
- Ritchie compass 5"
- FURUNO Navigation Package Integrated with NMEA2000 **UPGRADE**
- Isoboost package (50AMPx2) **UPGRADE**
- Underwater lights (three) **UPGRADE**

Audio/ Visual

SALON:

- LCD 40" TV with Professional A/V System with IR repeater (Dolby true HD DTS-HD XM/Sirius capable w/multiEQ that provides virtually perfect acoustical environment for up to six individual seating locations, also detects "out of phase inner" auto compensable to match w/ subwoofer & speakers. HDMI 1.3 provides high bandwidth HD video output) for true color HD reproduction.
- One Sub-woofer

MASTER STATEROOM:

- LCD 32" TV
- Sony DVD/ CD audio stereo and video system
- Surround Sound system
- IR repeating for audio/ video system
- One Sub-woofer

FORWARD GUEST STATEROOM:

- LCD 22" TV & DVD/ CD system
- Sony DVD/ CD audio stereo and video system
- IR repeating for audio/ video system

Main Deck & Flybridge

- Fiberglass bow pulpit with S/S anchor roller
- Hardtop w/ dual ventilation hatches
- Windows all fixed and flush

- Lexan® windscreen on FB
- Swing open door with fixed window, bridge to pilothouse
- Wet bar with sink and bar refrigerator on FB **UPGRADE**
- Seating on FB with fiberglass table **UPGRADE**
- Gates in port & stbd. **UPGRADE**
- Scuppers, side cockpit
- Tempered dark tinted window glass. Glass is Low-E glass which increase energy efficiency by 25%+ and is UV stabilized for reduction of fading and degradation of a yacht's interior and health of occupants due to harmful UV rays
- Teak bow and stern staffs
- Transom doors
- S/S door cockpit to salon (hinged door)
- Heavy duty corner cleats at both sides of Euro transom
- Four U-shaped rails on swim step
- Lighted OA logo
- Teak deck for cockpit and walkway to midship **UPGRADE**
- Teak swim platform w/ teak steps **UPGRADE**
- Swing open cockpit to FB hatch with stainless steel frame with glass cover inserts
- Go through chute style pulpit **UPGRADE**
- Upholstered cushions for exterior settee

Pilothouse/ Dinette

- PH solid wood flooring **UPGRADE**
- L-shaped dinette with chart drawer under
- Sunken and extended dash with instrumentation
- Wood table top with storage cabinet under
- Windshield defrosters
- Wood rail with S/S fitting
- Watertight pantograph doors to side deck
- One Stidd® mechanical helm seat (black) **UPGRADE**
- Custom-designed pilot station with black Ultraleather
- Chart light beside dash **UPGRADE**
- Upholstered cushions for dinette

Salon

- Wood valance board
- Removable ceiling panel
- Grohe™ Bar Faucet and custom sink
- 24V LED lights (Aerospace quality, specially tuned color temperature for Ocean Alexander that last over 100,000+ hours)

- Painted floor prepared for carpet
- Wood paneling and cabinetry
- 12" Sunpentown wine cooler w/ solid panel door

Plumbing

FRESH WATER SYSTEM:

- Headhunter™ pressure fresh-water system
- 2mm thickness 316 S/S water tanks w/ sight gauges
- Fresh-water outlet with hose for engines & generator
- Fresh water wash down, fwd. deck & cockpit
- Pre-plumb for water maker
- HOT WATER HEATER:
- 30-gallon water heater with high density fiberglass insulation w/ high efficiency heating element

FUEL SYSTEM:

- 4.5mm thickness 5052 Aluminum fuel tanks with sight gauges and tested to International Standards 33CFR 510(a) w/ high and low fuel level alarm system
- Dual Racor® fuel/water separator with Y-valves for engine & generator

SEWAGE TREATMENT SYSTEM:

- Holding tank plumbed dockside for overboard discharge
- Holding tank gauge in PH

BILGE / DISCHARGE:

- Common drainage system for sink, shower, bilge & exterior deck
- Five electric bilge pumps, 24V auto & manual switch, sumped when available
- Two 24V shower sump pumps
- High water bilge alarm with all bilge pumps
- One manual bilge pump in crew quarter

DECK / FLYBRIDGE:

- Aft deck shower, dock-side water inlet
- Both side fillers for water & fuel tank

Disclaimer

The Company offers the details of this vessel in good faith but cannot guarantee or warrant the accuracy of this information nor warrant the condition of the vessel. A buyer should instruct his

agents, or his surveyors, to investigate such details as the buyer desires validated. This vessel is offered subject to prior sale, price change, or withdrawal without notice.

Исключения

При продаже яхты исключаются личные вещи владельца.

Отказ от ответственности

Компания предоставляет описание судна или яхты добросовестно, но не может гарантировать точность этой информации, а также не ручается за техническое состояние. Покупатель должен проинструктировать своих агентов или оценщиков исследовать представленную информацию более подробно, по собственному желанию. Продажа судна или яхты, изменение цены или снятие с продажи будет происходить без предварительного уведомления.

ФОТОГРАФИИ

Bow View



Aft Starboard View



Master Stateroom Hullside Windows



Aft Starboard View



Aft View



Port Walkaround



Coaming Gates



Bow View



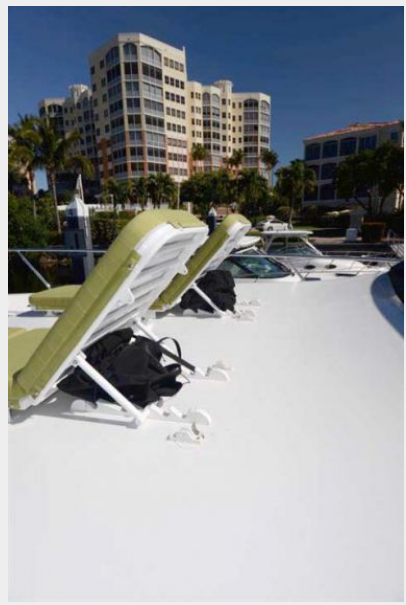
Bow Lounge Chairs



Bow Lounge Chairs



Bow Lounge Chairs



Aft Control Station



Windlass



Bridge Seating



Bridge Seating



Bridge Helm



Bridge Helm



Cockpit



Salon



Salon



Salon Bar



Steps To Master Stateroom



Galley



Galley



Salon Wine Cooler



Dinette



Dinette



Dinette



Galley



Helm Station



Control Panel



Helm Station



Master Stateroom



Master Stateroom



Master Stateroom



Master Stateroom



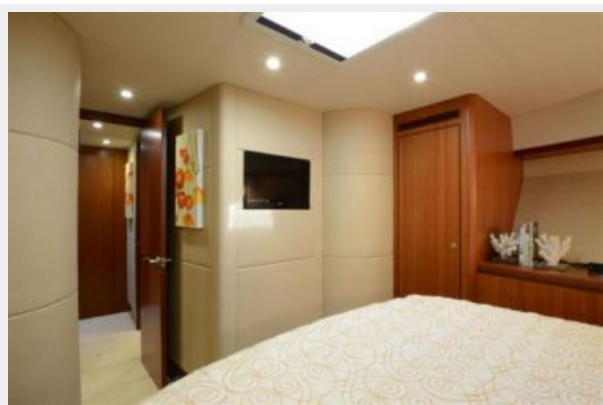
Master Stateroom



Bow Stateroom



Bow Stateroom TV



Port Stateroom



Bow Head



Bow Head



Master Head



Master Her Head



Washer/ Dryer



Engine Room



Dual Generator



Port Engine



Generator



Hydraulic System



Fuel Polishing System



Water Maker (1,200 dal/ day)



Crew Area



Crew Area



Crew Area



Crew Area



Crew Area



Crew Head



КОНТАКТЫ

Андрей Шестаков (Andrey Shestakov) – ведущий яхтенный брокер отдела продаж яхт и судов компании Shestakov Yacht Sales Inc. Официальный представитель Shestakov Yacht Sales Inc. для русскоговорящих клиентов в центральном офисе компании в Майами/Форт Лодердейл/Флорида/США.

Контактная информация

Email: andrey@shestakovyachtsales.com

Web: shestakovyachtsales.com

Телефоны

Краснодарский край: **+7(918)465-66-44**

США, Майами, Флорида: **+1(954)274-4435**

Время работы

Понедельник – Суббота: **9:00 - 21:00**
EDT

Воскресенье: **Закрето**

Адрес



Harbour Towne Marina, 850 NE 3rd St,
STE 213, Dania, FL 33004