

PERFECT SENSE — MONTE FINO



Судостроитель: MONTE FINO

Год постройки: 2015

Модель: Моторная яхта

Цена: **ЦЕНА ЯХТЫ ПО ЗАПРОСУ**

Местонахождение: United States

Длина общая: 80' 0" (24.38m)

Ширина: 19' 0" (5.79m)

Макс. осадка: 5' 10" (1.78m)

Крейс. скорость: 18 Kts. (21 MPH)

Макс. скорость: 21 Kts. (24 MPH)

Купить **PERFECT SENSE — MONTE FINO** а также выбрать подходящую вам яхту из нашего каталога яхт вам поможет опытный яхтенный брокер Андрей Шестаков. На сегодняшний день компания **Shestakov Yacht Sales Inc.** имеет большое количество яхт в собственном списке продаж, а также тесно сотрудничает со всеми крупными яхтенными производителями по всему миру.

Для того чтобы купить яхту **PERFECT SENSE — MONTE FINO** а также проконсультироваться по любому вопросу связанному с покупкой, продажей, чартером яхт позвоните по телефону **+7(918)465-66-44**.

ОГЛАВЛЕНИЕ

ОГЛАВЛЕНИЕ	2
ХАРАКТЕРИСТИКИ	3
Обзор	3
Основная информация	3
Размеры	3
Скорость, вместимость и масса	3
Размещение	4
Корпус и палуба	4
Информация о двигателе	4
ПОДРОБНОЕ ОПИСАНИЕ	5
Interior Equipment	5
Appliances	5
Audio & Visual Equipment	5
Navigation Electronics	6
Mechanical Equipment	6
Исключения	8
Отказ от ответственности	8
ФОТОГРАФИИ	9
КОНТАКТЫ	14
Контактная информация	14
Телефоны	14
Время работы	14
Адрес	14

ХАРАКТЕРИСТИКИ

Обзор

Combining world class quality with a great price point, this superb yacht is a design masterpiece with a three stateroom layout, large open galley, a full complement of electronics and options, and an eye pleasing interior. She offers the ideal combination of European styling and a functional American style floorplan and storage galore!

Основная информация

Тип судна: Моторная яхта

Подкатегория: Flushdeck

Модельный год: 2015

Год постройки: 2015

Страна: United States

Верх: Hardtop

Открытая палуба мостика: Да

Размеры

Длина общая: 80' 0" (24.38m)

Ширина: 19' 0" (5.79m)

Макс. осадка: 5' 10" (1.78m)

Трапы: 27' 1" (8.25m)

Скорость, вместимость и масса

Крейс. скорость: 18 Kts. (21 MPH)

Макс. скорость: 21 Kts. (24 MPH)

Водоизмещение: 143921 Pounds

Вместимость воды: 450 Gallons

Вместимость сточного бака: 120 Gallons **Объем топливного бака:** 1500 Gallons

Размещение

Всего кают: 3

Всего коек: 4

Спальные места: 6

Всего ком. состава: 5

Каюта капитана: Да

Каюты экипажа: 2

Койки экипажа: 3

Спальных мест экипажа: 4

Комм. состав экипажа: 2

Корпус и палуба

Материал корпуса: Fiberglass

Материал палубы: Fiberglass

Комплектация корпуса: Semi-Displacement

Отделка корпуса: Stainless Steel

Информация о двигателе

Двигатели: 2

Производитель: Caterpillar

Модель: C-18 ACERT

Тип двигателя: Inboard

Тип топлива: Diesel

ПОДРОБНОЕ ОПИСАНИЕ

Interior Equipment

Vimar light switch throughout vessel Cherry and Anigre wood interior Decorator Custom Pillows (5) Lacquer Shower Wall in Capt, Crew, Port and Stbd Guests and Master Lonseal floor in all heads except Master All shower pans have teak grates floors (4) Aluminum frame Shower Door in Capt, Crew, Port and Stbd Bathrooms (2) Frameless Clear Glass Shower Doors in Master Marble Shower Seat in Master Marble Slab Floor in Master Bathroom Teak Dining table with 6 dining chairs Granite counter tops in galley Sliding Pass Through Window above the sink in Galley (3) additional Power Outlets: (1) in Galley, (1) on Galley Island and (1) on Crew bulkhead above Washer/Dryer L-shaped couch (1) Wood coffee table aft deck sliding door with stainless steel frame and tinted glass (1) one single sofa in salon Marble/Granite Fwd Console Top in Salon (1) Interior stairway up to fly bridge Sliding mechanism to allow (1) single bed to slide in STBD Guest Cabin to make queen Day head on Main Deck with wood veneer finish, Sink and Grohe sink faucet, Headhunter Super Bowl (Bone), choice of granite or marble counter top and Marble slab floor

Appliances

LG LFC25776 S/S Fridge in Galley GE PP945BMBB Black Cooktop with JT5000SFSS S/S Oven in Galley GE PVM1790SRSS S/S Microwave in Galley MIELE G5605SCSS S/S Dish Washer in Galley Trash Drawer in Galley Pull Out Pantry in Galley Galley Sink Galley Sink Faucet - GROHE 32946.002 CHROME U-LINE 2115R/BLK Black Fridge in Salon U-LINE BI2115B Black Ice Maker in Salon U-LINE 1175R White Fridge w/Ice at Aft Deck HOSHIZAKI AM50BAE White Clear Ice Maker in flybridge S/S Bar Sink in flybridge Chrome Bar Faucet in flybridge Fire Magic 3CS1S1N-A S/S Gas Grill in flybridge White Spa Tub with cover in flybridge Splendid ARWXF129W Washer & TVM63X Dryer White in Crew Area Splendid ARWXF129W Washer & TVM63X Dryer White in lower foyer

Audio & Visual Equipment

KVH Tracvision HD7 for USA coverage mounted @ Mast Edson 5" tower for KVH Edson adjustable starboard wedge Shakespeare 2030 TV antenna Lilly Basic stainless GPS mount Shakespeare 2025 CP Controller TV Distribution board Samsung 46" LED Smart TV mounted @ Main Salon TV Mount Ultra thin large Bose Lifestyle 535 System black Bose UB-20B Wall/Ceiling bracket black x 5 Bose IPOD Dock for 535/525 Apple Lightning to 30-pin adapter DIRECTV HD DVR Receiver Samsung BDF-6700 Blu Ray Disc player Tripplite smartonline

double conversion 2u ups for Salon and HD7 Middle Atlantic sliding rack assembly Bose SA-4 Soundtouch Package @ Aft Deck RTI T2-CS+ Remote Kit JL Audio M770-CCX Speaker 7.7" pair Samsung 28" Slim LED TV mounted @ Galley TV Mount Ultra thin small DIRECTV H25 DSS Receiver DIRECTV H25 RF Handheld Remote Tripplite Internet 350U Samsung 40" LED HDTV with WiFi mounted @ Master TV Mount Ultra thin large Bose Lifestyle 535 Series 2 Ent. System w/premium jewel cube speakers Bose UB-20B Wall/Ceiling bracket black x 2 Bose IPOD Dock for 535/525 Apple Lightning to 30-pin adapter DIRECTV H25 DSS Receiver Samsung BDF-6700 Blu Ray disc player Tripplite Smart500RT-1U Samsung 32" LED HDTV with Wi-Fi mounted @ Port Guest TV Mount Ultra thin large DIRECTV H25 DSS Receiver Niles RCA-SM2 Black IR Kit Tripplite Internet 350U Samsung 28" Slim LED TV mounted @ Stbd Guest TV Mount Ultra thin small DIRECTV H25 SS Receiver Niles RCA-SM2 Black IR Kit Tripplite Internet 350U Samsung 32" LED HDTV with Wi-Fi mounted @ Fwd Guest TV Mount Ultra thin large DIRECTV H25DSS Receiver Niles RCA-SM2 Black IR Kit Tripplite Internet 350U Fusion MS-IP700I IPod AM/FM Color mounted @ Fly bridge JL Audio M770-CCX Speaker 7.7" pair Bose Lifestyle V35 Audio out cable Newmar 32-12-35 Converter Phone/TV cord

Navigation Electronics

Furuno TZT14 Navnet 14" Color Touchscreen Display mounted @ Helm x 2 Furuno DRS6A Navnet Antenna Furuno NAV 3D 6KW 30M Cable Furuno PSU012 Power Supply Furuno GP 330B Network GPS Antenna mounted @ Mast Lilly Basic Stainless GPS Mount Furuno NAV 3D HUB101 Interswitch Furuno NAV3D 5M Network Cable Lilly 12" fixed S/S Deck Mount Furuno RD33 Color LCD Remote Display Furuno DST 800 MSF depth, speed & temp cable Furuno NMEA Install Kit Concord 24 to 12 VDC Power Converter Fixed Mount VHF Flushmount Kit Rear Mic Mount Kit Newmar Hailer Horn 60/40 Newmar Hailer Horn Extension Cable Digital 500 Series 16' VHF Antenna Digital Custom Cable x 150' Lilly Round Base Swivel Mount Lilly Upper Support Furuno Navpilot 700 Furuno Navpilot 700 extension cables Furuno Navpilot HRP pump set ACR RCL 100D 24VDC Spotlight x 2 Noland NMEA Expander 1 to 4

Mechanical Equipment

V-Shaped keel with longitudinal stringers Fiberglass hand laid molded hull Stringers with foam cored reinforcement Stringers bonded to hull in several layers of glass cloth and resin Deck and superstructure with foam cored reinforcement under fiberglass layers Interior structural components all bonded to hull included bulkheads and frames Foam cored sandwich deck construction for strength FRP main and lower decks FRP Bulkheads Non-skid decks Hard top Handrails stanchions, and fittings made of stainless steel 316 alloy Heavy duty 1-1/2" handrails and 1-1/4" stanchions Maxwell windlass VWC 3500 with S.S. 150 lbs anchor and 200 feet of anchor chain Chain stripper w/ chain stop Remote windlass operation from bridge & lower helm Non-skid swim platform Fiberglass swim platform & stainless steel swim ladder Built-in shower with hot/cold water above swim platform 3" Stainless Steel shafts equivalent to Aquamet 22HS 4-blade bronze propellers Easy accessible shaft logs w/bronze housing for packing gland

Hydraulic steering by Hynautic easily adaptable autopilot Emergency tiller Stainless steel rudders Engine alarm system - low oil pressure - high temp. at fly bridge and lower helm 24 volt lights and 110 volt power receptacles Underwater exhaust w/ Idle by pass Fresh water fitting for filling engine and generator expansion tanks Y valve for dockside pump-out Sealand macerator pump 1500 gallons of fuel Locker upper front in bow Color coded wiring for easy identification Stainless steel fresh water tanks with 450 US Gallons of total capacity (1) NEMAR 25 AMP DC 24V to DC 12V converter (4) Bilge pump (2) Additional Bilge pump (8) 200 amp / hr batteries for engines and ship's power (3) Professional Mariner battery charger Separate 120 amp / hr starting battery generator Enclosed acid-proof fiberglass battery boxes with cover Main electric panel with separate AC power control and AC circuit breaker panel 24 volt DC monitoring and main circuit breaker panel 110 volt duplex receptacles located throughout including engine room Indirect lighting under valances in salon and staterooms 24 volt DC monitoring & main circuit breaker panel Modern console with all gauges Easy access to dashboard controls Alarms for low oil and engine temperature Fly bridge seat covers Helm seating on fly bridge Passenger seating on fly bridge bench seat Controls and gauges on fly bridge Heavy duty 1/2" Lexan Venturi windshield Radar arch (2) Freeman Hatches for bow and swim platform Lexan access hatch to bridge Lights in closet on micro switch Cedar lined closet (2) Large pneumatic lift to fully access storage under bed in master and VIP High quality sea water strainers for sea water inlets Bronze through hull fittings White perforated insulation panels in Engine Room Double layer of sound and heat insulation in Engine room bulkhead fwd, aft & ceiling Safety rails around both main engines Racor 100 MA fuel filters/ water separator, each engine x 2 NAIAD HPS-10HT-25HP Hydraulic bow thruster with controls Naiad Stabilizer 254 w/7.5 sq. fins w/Multisea 2000 Double stabilizer & bow thruster backup pump on back of port & stbd engine (1) Glendinning CM8 Cablemaster out stern 100 amp w/ white cord 100' (2) ONAN 27.5 kW 60 Hz single phase generators Glendinning controls station fly bridge helm and one remote Cruiseair Chilled Water System (6) Headhunter heads with 110pumps x2 and 24volt pump Seafire Extinguisher System with manual discharge system Tide Marine dripless shaft seals on shaft and rudders Oil change Reverso Eng. Gears. & Gen. Delta T system with blowers Storage locker to port side for Marquipt ladder Dolphin AC/DC Light Transformers (2 x 120 amp) Naiad stabilizer hull fairing part Security breaker switch for AC power (1) Kraus & Naimer C80 booster switches for isolation transformer Watertight bulkheads in engine room (2) 20 US Gallon water heater (3) 14 US Gals sump tanks with access hatch KAHLENBERG K-380 air horn Aft deck molded stairs to boat deck Aft deck teak table (2) Aft deck FRP seating Teak on aft deck and stair to Fly Bridge Aft deck wet bar with space for fridge FRP Boxes on upper deck for BBQ Grill and Ice maker (4) Large 320 x 628 (mm) open able porthole with fly screen (2) Large 320 x 629 (mm) fix porthole (2) 12" x 24" Stainless steel opening porthole with fly screen (4) 12" x 24" S/S fixed porthole Port helmsman seat with cushion on flybridge Fly bridge bar with 3 bar stools and FRP top 2" stainless steel oval hull banding with wood insert & extra 4" offset from hull (4) 2" "U" shaped stanchions at swim platform Emergency escape hatch with ladder from crew quarter or engine room to aft deck Stainless steel corner hawser pipe with rollers and cleat at port & stbd side of aft deck 1-1/2" Stainless Steel hand rail on 1-1/4" stanchion for fly bridge Quick Lift 1600 LB with 360° Pyramid Base Davit Marquipt Sea Stairs

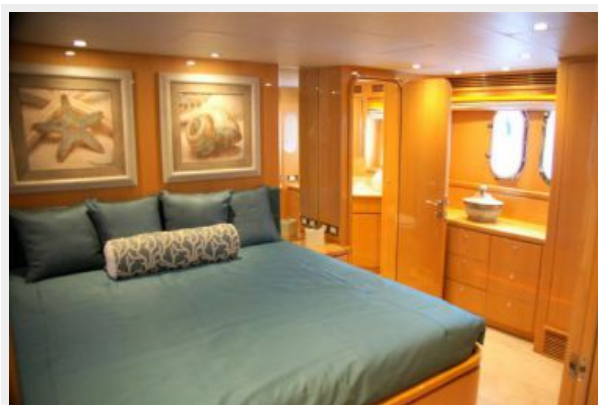
Исключения

При продаже яхты исключаются личные вещи владельца.

Отказ от ответственности

Компания предоставляет описание судна или яхты добросовестно, но не может гарантировать точность этой информации, а также не ручается за техническое состояние. Покупатель должен проинструктировать своих агентов или оценщиков исследовать представленную информацию более подробно, по собственному желанию. Продажа судна или яхты, изменение цены или снятие с продажи будет происходить без предварительного уведомления.

ФОТОГРАФИИ









КОНТАКТЫ

Андрей Шестаков (Andrey Shestakov) – ведущий яхтенный брокер отдела продаж яхт и судов компании Shestakov Yacht Sales Inc. Официальный представитель Shestakov Yacht Sales Inc. для русскоговорящих клиентов в центральном офисе компании в Майами/Форт Лодердейл/Флорида/США.

Контактная информация

Email: andrey@shestakovyachtsales.com

Web: shestakovyachtsales.com

Телефоны

Краснодарский край: **+7(918)465-66-44**

США, Майами, Флорида: **+1(954)274-4435**

Время работы

Понедельник – Суббота: **9:00 - 21:00**
EDT

Воскресенье: **Закрыто**

Адрес



Harbour Towne Marina, 850 NE 3rd St,
STE 213, Dania, FL 33004