

N/A — BERTRAM



Builder: BERTRAM

Year Built: 2010

Model: Sport Fisherman

Price: PRICE ON APPLICATION

Location: United States

LOA: 54' 0" (16.46m)

Beam: 17' 10" (5.44m)

Max Draft: 5' 5" (1.65m)

Our experienced yacht broker, Andrey Shestakov, will help you choose and buy a yacht that best suits your needs n/a — **BERTRAM** from our catalogue. Presently, at Shestakov Yacht Sales Inc., we have a wide variety of yachts available on our sale's list. We also work in close contact with all the big yacht manufacturers from all over the world.

If you would like to buy a yacht n/a — **BERTRAM** or would like help answering any questions concerning purchasing, selling or chartering a yacht, please call +1(954)274-4435

TABLE OF CONTENTS

TABLE OF CONTENTS	2
SPECIFICATIONS	3
Overview	3
Basic Information	3
Dimensions	4
Speed, Capacities and Weight	4
Accommodations	4
Hull and Deck Information	4
Engine Information	4
PHOTOS	5
CONTACTS	15
Contact details	15
Telephones	15
Office hours	15
Address	15

SPECIFICATIONS

Overview

- Twin Caterpillar C-32 1625 HP with 465 Hours
- (2) Kohler Generators 22 kW, 601 Hours on STBD and 611 hours on Port
- (2) Two Mitsubishi anti Rolling Gyro (MSM-2000)
- Watermaker 700 GPD
- Ice maker, Eskimo, for cockpit fishbox
- Mezzanine teak deck with custom upholstered cushions
- Cockpit sun shade
- Swim platform with ladder
- Cockpit and Salon video camera
- Flir night vision system
- Custom extra set salon sofa and dinette cushions
- Underwater Generator Exhaust
- BOSE Home theater system audio-speakers
- Blue LED
- LED in cockpit overhang
- All interior LED Lights
- (3) Underwater lights
- JL speakers sound system
- Hardtop Pipe Welders
- Optional sliding window aft salon
- Color Hull Bahama Blue or Yellow fight lady
- Underwater Generator Exhaust
- Amtico flooring
- New Strataglass Eisen glass (Feb 2015)
- Fresh Buff & Wax (Feb 2015)

Basic Information

Category: Sport Fisherman

Model Year: 2010

Year Built: 2010

Country: United States

Fly Bridge: Yes

Cockpit: Yes

Dimensions

LOA: 54' 0" (16.46m)

Beam: 17' 10" (5.44m)

Max Draft: 5' 5" (1.65m)

Clearance: 14' 0" (4.27m)

Speed, Capacities and Weight

Water Capacity: 225 Gallons

Fuel Capacity: 1525 Gallons

Accommodations

Total Cabins: 3

Total Heads: 2

Hull and Deck Information

Hull Material: Fiberglass

Engine Information

Engines: 2

Manufacturer: Caterpillar

Model: C-32

Engine Type: Inboard

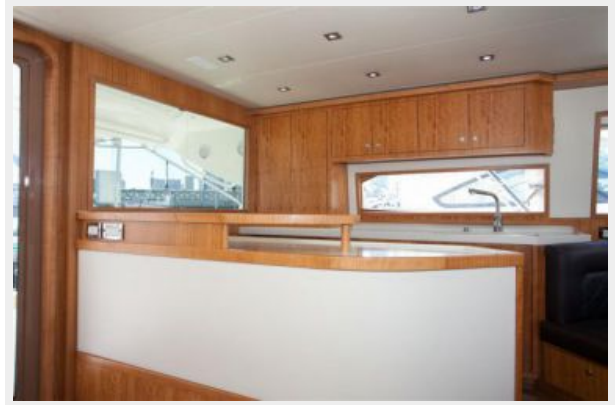
Fuel Type: Diesel

PHOTOS





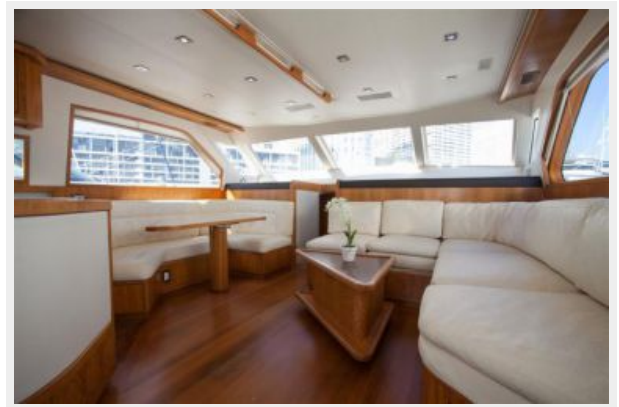
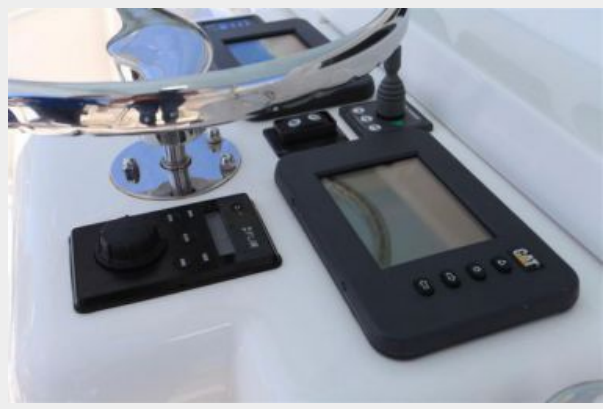


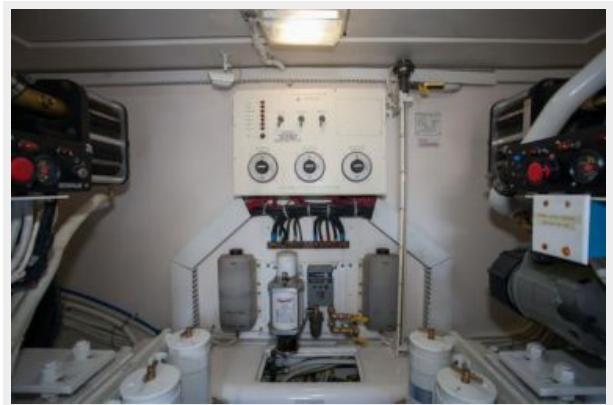














CONTACTS

Andrey Shestakov, leading yacht broker of the sales department of Shestakov Yacht Sales Inc. Shestakov Yacht Sales Inc., the official representative of the Miami/Fort Lauderdale FL headquarters.

Contact details

Email: andrey@shestakovyachtsales.com

Web: shestakovyachtsales.com/en/

Telephones

USA: +1(954)274-4435

Office hours

Monday – Saturday: **9:00 - 21:00** EDT

Sunday: **closed**

Address



Harbour Towne Marina, 850 NE 3rd St,
STE 213, Dania, FL 33004