

## PELAGIOS — CABO



**Builder:** CABO

**Year Built:** 2007

**Model:** Sport Fisherman

**Price:** PRICE ON APPLICATION

**Location:** United States

**LOA:** 35' 0" (10.67m)

**Beam:** 13' 0" (3.96m)

**Max Draft:** 3' 0" (0.91m)

Our experienced yacht broker, Andrey Shestakov, will help you choose and buy a yacht that best suits your needs **Pelagios — CABO** from our catalogue. Presently, at Shestakov Yacht Sales Inc., we have a wide variety of yachts available on our sale's list. We also work in close contact with all the big yacht manufacturers from all over the world.

If you would like to buy a yacht **Pelagios — CABO** or would like help answering any questions concerning purchasing, selling or chartering a yacht, please call **+1(954)274-4435**

# TABLE OF CONTENTS

TABLE OF CONTENTS	2
SPECIFICATIONS	3
Overview	3
Basic Information	3
Dimensions	3
Speed, Capacities and Weight	3
Accommodations	3
Hull and Deck Information	4
Engine Information	4
DETAILED INFORMATION	5
OVERVIEW	5
Exclusions	13
Disclaimer	13
PHOTOS	15
CONTACTS	20
Contact details	20
Telephones	20
Office hours	20
Address	20

# SPECIFICATIONS

---

## Overview

---

“Pelagios” is new to the market and is in excellent condition!! Owner has found his next vessel. Looking for offers!!! FEATURES • Desirable Cummins engine package with twin 540 HP and all of its service work is up to date including, heat exchanger, after coolers and fuel coolers. • Current engine hours 770 • Both shaft seals replaced • New bottom paint, 1/20/15 • Replaced cutlass bearings, 1/20/15 • Entire vessel just detailed 2/05/15

## Basic Information

---

**Category:** Sport Fisherman

**Model Year:** 2008

**Year Built:** 2007

**Country:** United States

**Fly Bridge:** Yes

**Cockpit:** Yes

## Dimensions

---

**LOA:** 35' 0" (10.67m)

**Beam:** 13' 0" (3.96m)

**Max Draft:** 3' 0" (0.91m)

## Speed, Capacities and Weight

---

**Displacement:** 20000 Pounds

**Water Capacity:** 100 Gallons

**Fuel Capacity:** 400 Gallons

## Accommodations

---

**Total Cabins:** 2

**Total Heads:** 1

## Hull and Deck Information

---

<b>Hull Material:</b> Fiberglass	<b>Hull Configuration:</b> Deep Vee
<b>Hull Color:</b> White	<b>Hull Designer:</b> Cabo

## Engine Information

---

<b>Engines:</b> 2	<b>Manufacturer:</b> Cummins
<b>Model:</b> 8.3QSC	<b>Engine Type:</b> Inboard
<b>Fuel Type:</b> Diesel	

---

# DETAILED INFORMATION

---

## OVERVIEW

---

“Pelagios” is new to the market and is in excellent condition!! Owner has found his next vessel. Looking for offers!!!

## FEATURES

- Desirable Cummins engine package with twin 540 HP and all of its service work is up to date including, heat exchanger, after coolers and fuel coolers.
- Current engine hours 770
- Both shaft seals replaced
- New bottom paint, 1/20/15
- Replaced cutlass bearings, 1/20/15
- Entire vessel just detailed 2/05/15

**ACCOMMODATIONS** Solid teak woodwork throughout is elegant and durable. The salon provides a perfect environment for relaxing or entertaining in elegant comfort. Five can dine comfortably at the starboard settee, and there is additional seating located portside, aft of the galley. In the galley, Corian counter tops and sink, twin burner cooktop, large refrigerator, and convection microwave oven. There's access to storage beneath settees and behind bulkheads. Cabo knows that storage is precious on board and none is wasted. Understated luxury continues below in the spacious double cabin. A large, double island berth on centerline with easily accessed dry storage below puts many larger boats to shame. Two rod lockers forward conceal as many as 10 offshore rods with reels.

A spacious head with separate stall shower is aft to starboard. Two additional single berths are located portside in the guest cabin. The cockpit is 130 sq ft with 2 large; insulated fish boxes, equipped with macerators, and a 50 gal bait tank is located in the transom to save cockpit space. A tournament style flybridge features electronic controls, easy to read analog engine instrumentation, large console for electronics, Pompanette helm and companion seats plus a forward bench seat with storage below.

## OPTIONS

- Glacier Bay chill plate in port fish box
- Helm station ice maker
- Propsmith
- 2x Ocean LED 2010 Underwater lights (blue)
- Rupp outriggers & center rigger
- Livewell with window and lights
- Fusion MS-CD500G and MSIP500G helm station sound w/Sirius, CD, iPod/iPhone, AM/FM
- Cockpit cover
- Helm station cover
- Helm station vinyl, four sides, replaced Fall 2014

**MAIN CABIN** The salon and galley provide hand-selected teak wood with its ultra-high-density grain and natural oils, which is milled in-house, varnished and then buffed to a satin finish. The optional teak and holly floor provide for a luxurious finished detail.

- AC duplex outlet/GFI protected
- Access hatch to bilge
- Air conditioning/heating, 16,000 BTU, full interior
- Carpet, removable, deep-pile
- Dining table, teak, double pedestal
- Entertainment center, built-in
- Fabrics and coverings, fine selection throughout
- Interior wood, teak, satin finish
- Latches, positive, cabinet doors and drawers
- Lighting, recessed halogen
- Mini-blinds, custom, throughout
- Rod storage, behind lounge seating

- Salon windows, fixed, tinted
- Settee, starboard, converts to double bed
- Settee, port
- Stereo, AM/FM/CD/DVD, speakers (2)
- TV, flat screen

**GALLEY** The galley features an abundance of storage with under counter refrigeration, two burner cooktop and Corian countertops with molded in sinks. Adjacent to the galley is a U-shaped settee easily viewing the TV with coffee table.

- AC duplex outlet/GFI protected
- Cook top, ceramic, two-burner, recessed with Corian® cover
- Corian countertop with custom Corian® sea rails
- Latches, positive, cabinet doors and drawers
- Microwave/convection oven
- Refrigerator with top freezer, AC/DC
- Sink, custom
- Storage, compartments and drawers throughout
- Under cabinet lighting, recessed halogen

**STATEROOMS** The forward stateroom features a walk around queen berth forward with drawer storage underneath. Cedar lined hanging and storage compartments as well as rod storage above to port and starboard. To port, over/under berths provide additional accommodations.

- AC duplex outlet/GFI protected
- Access to anchor rope/chain locker
- Berth, double, island style, 5" mattress, bunk cover
- Foredeck hatch with retractable shade
- Latches, positive, cabinet doors and drawers

- Lighting, recessed halogen
- Locker, hanging, cedar-lined, port
- Stereo AM/FM/CD/DVD, speakers (2)
- Storage, compartments and drawers below bed
- Storage, rod lockers (2), with horizontal rod racks
- TV, 20" LCD, built-in, cable hookup

**HEAD** Like all Cabos the head is nicely contained and features a stall shower with Corian countertop and under mount sink.

- AC duplex outlet/GFI protected
- Air conditioning/heat vent, adjustable
- Corian countertop, custom
- Exhaust blower
- Head, Sealand Vacuflush, electric
- Holding tank monitor system
- Lighting, recessed halogen
- Opening port
- Shower stall, separate
- Toiletry storage cabinet, Corian framed with sliding mirror doors
- Towel rack
- Vanity, custom, with storage cabinet

**FLYBRIDGE** The flybridge features a pensula style helm with twin helm chairs and seating forward with half tower and a four sided enclosure.

- Bench seat, forward of console, cushions and storage
- Bridge ladder and safety rails to match deck rails, custom welded
- Coaming padding, forward of seating area, high-density foam, vinyl covered



- Compass, with light, flush-mounted
- Configuration, tournament-style
- Electronics console, custom-molded
- Engine instrument panel, complete custom with audible warning system
- Fire and bilge water level alarms, audible
- Helm and companion chairs, Pompanette, pedestal-mounted, adjustable
- Helm wheel, stainless steel
- Rocket launchers, bridge rail, (5)
- Storage, lockers, forward
- Storage, cabinet at helm
- Switch panel, custom, stainless steel
- Icemaker

## ELECTRONICS

- ICOM 604 VHF
- Raymarine ST60+ Tridata
- 2 Raymarine E120 classic MFDs
- Raymarine DSM300 digital sounder
- Raymarine Pathfinder radar, 48", 4 kw, open array
- Interfaced with Raymarine Ethernet hub
- CAT 5 cable to salon for connecting with Raytech navigation software
- Raymarine ST8002 Smart Pilot
- Raymarine SR100 Sirius weather and radio
- Dual beam remote control search light

**DECK** All rails, ladders, vents, cleats, rod holders, the helm wheel, controls, and most other

components are custom designed and manufactured to Cabo's strict standards.

- Anchor roller assembly, recessed, custom stainless steel
- Bow chocks, 6" stainless steel
- Bow cleats, 12" stainless steel
- Bow pulpit, integral molded fiberglass
- Custom deck rails, aluminum or optional polished stainless steel
- Deck surface, molded-in, non-skid
- Molded fiberglass using polyester resin, biaxial stitched fabric reinforcement and core construction
- Molded-in white gel coat finish
- Spring line cleats, 10" stainless steel
- Stern cleats, 12" stainless steel
- Stern hawse pipes, stainless steel
- Windlass, heavy-duty, DC electric, remote at bridge and deck switches

**COCKPIT** Cabo focuses on the fish ability surrounding their cockpits design. With careful planning and forethought they place fish boxes, bait tanks, prep and tackle storage conveniently for the sport fisherman. The 130 square foot cockpit includes a 50 gallon bait tank molded into the transom, two macerator-equipped, large fish boxes built flush deck into the sole, fresh and saltwater wash-down, and port and starboard cabinets run nearly the length of the cockpit.

- Aluminum reinforcing plate installed for mounting fighting chair
- Bait tank, 50-gallons, molded into transom
- Gunwale padding, high-density foam, white vinyl covered
- Courtesy lighting under gunwales and helm deck overhang
- Fish boxes (2), large, insulated, macerator pump-out system (Refrigerator plate in port box)
- Hatches, lazarette and fish boxes, heavy-duty, gasketed seals, drains, gutters and full-length stainless steel piano hinge and custom latch
- Rod-gaff racks, port and starboard

- Rod holders (5)
- Scuppers, self-bailing
- Tackle center, units both port and starboard, fiberglass with polyplastic drawers, lockable molded fiberglass cover
- Transom door with top gate, extreme-duty, polished stainless steel hardware
- Wash-downs, fresh-and saltwater

**HULL** Cabo uses high-tech laminating processes to ensure tremendous hull and topside strength with highly sophisticated reinforced fiberglass interior modules adding a greater resistance to torsion and flexure. Bottom paint, complete preparation 2 coats epoxy, 2 coats anti-fouling paint.

- Molded fiberglass construction using premium vinylester resins
- Premium quality molded-in white gel coat finish
- Stainless steel rub strip on face of white high-density PVC rub rail
- Trim tabs, fully recessed

**ENGINE/MECHANICAL** The Engine room is easy to access and maintain. The bilges are finished in bright white gel coat with ample space for installation of additional equipment. The systems are meticulously organized, grouping major components, for ease of maintenance. Fuel lines are fire-retardant, aircraft-grade braided stainless steel and all wiring is tin copper to resist corrosion.

- Glendenning controls
- Two Smartcraft diesel view displays
- Generator, Westerbeke 7.6 kW;  $\approx$  1466 hours
- Bilge, white gel coat finished
- Bilge pumps (4), three automatic/manual, one automatic
- Double constant torque stainless steel clamps on engine exhaust hoses
- Double hose clamps on all hose fittings, stainless steel
- Emergency bilge pump diverter valve on one main engine

- Engine alarm system
- Engine room liner, white gel coat finished
- Engine room blowers (2), DC
- Fire extinguishing system, automatic
- Freshwater cooling, main engines
- Fuel filters, with water separators, main engines and generator, large capacity
- Fuel lines, metal braided, fire-retardant
- Fuel tank, fiberglass, fire-retardant vinylester resin
- High water bilge alarms (3)
- Holding tank, 16 gal., warning lights, macerator and dockside discharge
- Mufflers, fiberglass, backwash surge tube
- Propeller shafts, double taper, couplers, high-strength stainless steel
- Propellers, 4-blade Nibral
- Rudders, bronze, high-strength
- Sea cocks, UL approved for marine application, bronze, fitted on all thru-hulls below waterline
- Steering system, hydraulic, Teleflex-Seastar
- Stuffing boxes, drip-less lip seal type
- Water heater, 11-gallon, AC, stainless steel
- Water intake scoops, bronze, high-speed, with integral seawater strainers
- ZF 285 Transmission

**ELECTRICAL** Cabo's electrical system is individually built by master electricians and is easy to navigate as it is clearly labeled and backlit. All wires are neatly bundled and follow perfect parallel lines.

- Westerbeke 7.6kw Generator
- 50' shore cords (2), 30-amp shore power

- Automatic battery paralleling, backup switch at helm
- Batteries (5), heavy-duty
- Battery on/off switches, vapor-proof
- Bonded electrical system
- Circuit breaker protection throughout
- Battery charger, 70-amp, automatic with thermal cut out
- Distribution panel, custom, AC electrical, with line voltage and load meter, reverse polarity light
- Distribution panel, custom, DC electrical, with battery voltage and load meter
- Horn, dual air trumpet
- Lights, engine room, incandescent, DC, (2)
- Lights, engine room, incandescent, AC, (2)
- Lights, navigation, international, uninstalled for future mounting on arch, hardtop or tower

**SAFETY EQUIPMENT** The Cabo comes standard with Safety Equipment, not normally provided by other Brands.

- Anchor
- 25' chain
- 250' rode
- Life jackets
- Fire extinguisher
- Dock lines

## Exclusions

---

Owner's personal belongings.

## Disclaimer

---

The Company offers the details of this vessel or yacht in good faith but cannot guarantee or warrant the accuracy of this information nor warrant the condition of the vessel. A buyer should instruct his representatives, agents, or his surveyors, to investigate such details as the buyer desires validated. This vessel or yacht is offered subject to prior sale, price change, or withdrawal without notice.

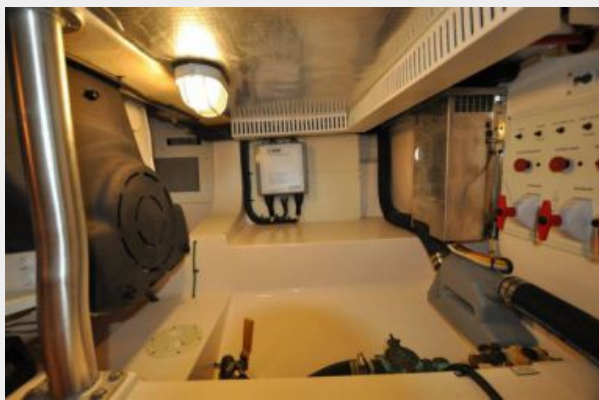
# PHOTOS













# CONTACTS

---

Andrey Shestakov, leading yacht broker of the sales department of Shestakov Yacht Sales Inc. Shestakov Yacht Sales Inc., the official representative of the Miami/Fort Lauderdale FL headquarters.

## Contact details

---

Email:  
**andrey@shestakovyachtsales.com**

Web: [shestakovyachtsales.com/en/](http://shestakovyachtsales.com/en/)

## Telephones

---

USA: **+1(954)274-4435**

## Office hours

---

Monday – Saturday: **9:00 - 21:00 EDT**

Sunday: **closed**

## Address

---



Harbour Towne Marina, 850 NE 3rd St,  
STE 213, Dania, FL 33004