

PHANTOM — SUNSEEKER



Builder: SUNSEEKER

Year Built: 2011

Model: Motor Yacht

Price: PRICE ON APPLICATION

Location: United States

LOA: 63' 0" (19.20m)

Beam: 16' 10" (5.13m)

Max Draft: 5' 3" (1.60m)

Cruise Speed: 23 Kts. (26 MPH)

Max Speed: 33 Kts. (38 MPH)

Our experienced yacht broker, Andrey Shestakov, will help you choose and buy a yacht that best suits your needs **Phantom — SUNSEEKER** from our catalogue. Presently, at Shestakov Yacht Sales Inc., we have a wide variety of yachts available on our sale's list. We also work in close contact with all the big yacht manufacturers from all over the world.

If you would like to buy a yacht **Phantom — SUNSEEKER** or would like help answering any questions concerning purchasing, selling or chartering a yacht, please call **+1(954)274-4435**

TABLE OF CONTENTS

TABLE OF CONTENTS	2
SPECIFICATIONS	3
Overview	3
Basic Information	3
Dimensions	3
Speed, Capacities and Weight	3
Accommodations	3
Hull and Deck Information	4
Engine Information	4
DETAILED INFORMATION	5
Accommodations	5
Salon	6
Galley	6
Fly Bridge	6
Deck Equipment	7
Aft Deck	7
Electrical Equipment	7
Electronics	8
Mechanical Equipment	8
Exclusions	9
Disclaimer	9
PHOTOS	10
CONTACTS	18
Contact details	18
Telephones	18
Office hours	18
Address	18

SPECIFICATIONS

Overview

4 cabin, 3 head layout. Captain maintained since new. Built to US specifications with many, many options included. **PRICE REDUCED!**

Basic Information

Category: Motor Yacht

Sub Category: Flybridge

Model Year: 2011

Year Built: 2011

Country: United States

Vessel Top: Bimini Top

Dimensions

LOA: 63' 0" (19.20m)

Beam: 16' 10" (5.13m)

Max Draft: 5' 3" (1.60m)

MFG Length: 69' 1" (21.06m)

Speed, Capacities and Weight

Cruise Speed: 23 Kts. (26 MPH)

Cruise Speed Range: 270

Max Speed: 33 Kts. (38 MPH)

Displacement: 77000 Pounds

Water Capacity: 215 Gallons

Holding Tank: 36 Gallons

Fuel Capacity: 925 Gallons

Accommodations

Total Cabins: 4

Total Heads: 3

Hull and Deck Information

Hull Material: Fiberglass

Hull Configuration: Deep Vee

Engine Information

Engines: 2

Manufacturer: MAN

Engine Type: Inboard

Fuel Type: Diesel

DETAILED INFORMATION

Accommodations

4 Cabin, 3 head layout

Master Cabin

- Queen berth w/storage below
- Built in nightstands
- Drawer storage
- Hanging locker w/additional drawer storage
- 2 x Large glass deadlights (P & S) w/opening portholes
- Leather upholstered love seat
- 22" Samsung LED TV
- Clarion CMVI DVD/CD/AM-FM
- En Suite Head w/stall shower

VIP

- Queen berth w/drawer storage below
- Overhead opening hatch w/screen
- Storage cabinets (P & S)
- Hanging locker
- 19" Samsung LED TV
- Alpine 12v DVD/CD/AM-FM
- En Suite Head w/stall shower

Starboard Guest Cabin

- 2 Twin berths w/drawer storage below
- Nightstand
- 2 x Opening portholes
- Hanging locker
- 19" Samsung LED TV
- Alpine DVD/CD/AM-FM

Port Guest Cabin

- Over/Under berths
- Hanging locker
- Night stand
- 19" Samsung LED TV
- Alpine DVD/CD/AM-FM

Shared head and stall shower are located forward of starboard guest cabin

Crew Cabin

- Transom hatch entry
- Over/under twin berths
- 15" Samsung LED TV
- Clarion CMVI DVD/CD/AM-FM
- Head w/shower
- Miele washer/dryer
- Head w/shower

Salon

- Black Walnut Interior with Wenge wood sole
- Leather U-settee
- SS pedestal table with glass top
- Entertainment center w/Bose hard drive DVD music storage system plays AM-FM/CD DVD and iPod and has 4 zones and remotes (Salon, FB, Aft Deck, Bow and Salon)
- XM Stereo Sat receiver
- Apple TV receiver
- 55" Samsung LED TV on a lift
- Dining area is forward, to starboard, opposite galley
- L-shaped dinette plus 3 additional leather chairs provide seating for 6
- Polished SS pedestal dining table w/top

Galley

Galley up portside

- Euro Kera 3 burner glass cook top
- Sharp grill w/convection/microwave oven
- Vitri Frigo SS refrigerator/freezer
- Bosch vented range hood w/work light over stove
- Avonite countertops
- Walnut cabinetry
- Wenge wood sole
- 10 x Sunseeker place settings pegged & stowed

Fly Bridge

- Bimini Top

- Large settee
- Teak table
- Wet bar w/icemaker, drink cooler & grill
- Sun Pad
- Radar arch w/ radar & light mast
- Zodiac 8 person life raft in canister

Helm station with:

- Hydraulic steering controls
- Trim tab controls
- Sidepower bow thruster controls
- Double helm seat w/storage below

Deck Equipment

- Chain locker w/fender storage w/2 deck access hatches
- 24 x Blue LED deck lights
- Dual trumpet air horns
- Remote control searchlight
- Textilene window covers
- 86 lb. Delta w/190 ft. of chain
- 24v Lewmar electric winch & capstan
- Foot switches for windlass
- Bow Quick Release wash down hook up
- Stern head anchor roller & anchor stop

Aft Deck

- Teak decking
- Teak steps to fly bridge
- Port & starboard steps to swim platform
- Built in settee
- Teak dining table
- Teak hydraulic swim platform w/tender chocks
- Hot & cold swim platform shower
- 3 sided black Sunbrella enclosure

Electrical Equipment

- 21.5kW Kohler 23 generator w/sound shield
- 110/220v AC 60 cycle electrical system

- 12/24v DC electrical system
- 6 x 24v Engine start batteries
- 6 x 24v House batteries
- 2 x 12v Generator start up batteries
- Newmar battery charger for 24v system
- Newmar battery charger for 12v system
- Inverter system
- Tropical spec A/C

Electronics

- Raymarine 12" radar/plotter/depth monitor
- 2 x MAN LCD color engine monitors
- Raymarine C Series 140 radar/plotter/depth
- Raymarine digital depth meter
- Raymarine digital speed indicator
- Raymarine ST6002 Autopilot
- VDO analog tachometers
- VDO rudder angle indicators
- Wema fuel gauge
- Raymarine Ray 240 VHF
- 4kW 48" radar scanner

Mechanical Equipment

- Twin MAN's @1100 hp each
- ZF 500-11VA transmission/v drives w 2.2 reduction ratio
- Dual MAN fuel filter water separators
- Sea Fire fire suppression system
- Sea Fire fire system engine shutdown override panel
- 2 x Automatic bilge pumps
- Automatic flood pump
- 4 blade Nibral propellers
- Dripless shaft logs
- SS trim tabs
- Side Power electric bow thruster
- Sure Cal 30 gal. water heater
- 3 x Aqualuma LED wide angle underwater lights
- CCTV camera in Engine Room
- HRO Safari SFM 450 reverse osmosis water maker 450 gpd

Exclusions

Owner's personal belongings.

Disclaimer

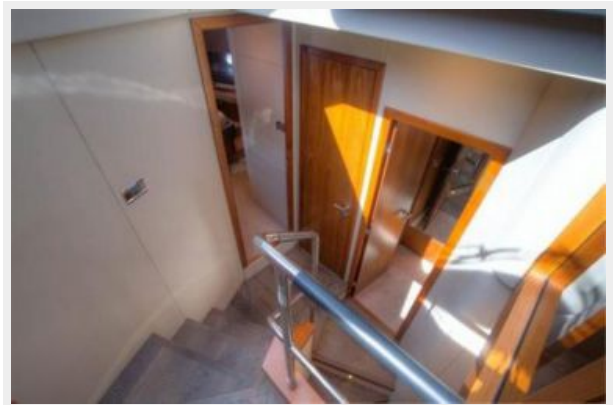
The Company offers the details of this vessel or yacht in good faith but cannot guarantee or warrant the accuracy of this information nor warrant the condition of the vessel. A buyer should instruct his representatives, agents, or his surveyors, to investigate such details as the buyer desires validated. This vessel or yacht is offered subject to prior sale, price change, or withdrawal without notice.

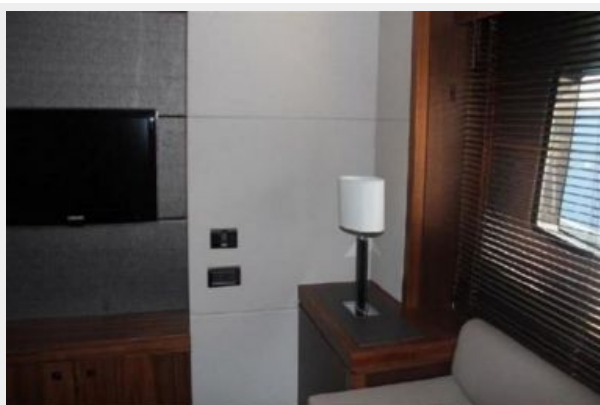
PHOTOS





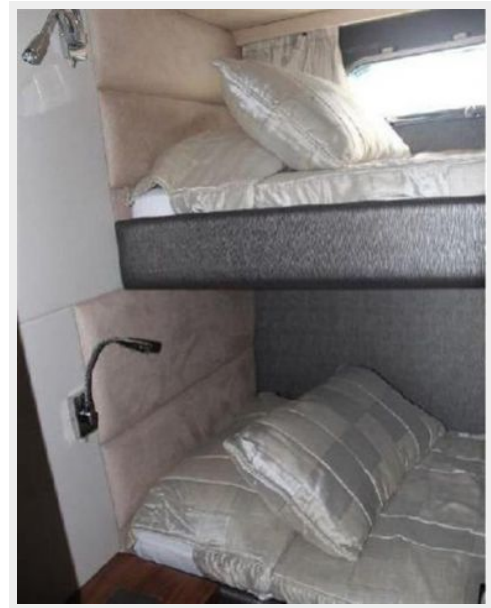












CONTACTS

Andrey Shestakov, leading yacht broker of the sales department of Shestakov Yacht Sales Inc. Shestakov Yacht Sales Inc., the official representative of the Miami/Fort Lauderdale FL headquarters.

Contact details

Email: andrey@shestakovyachtsales.com

Web: shestakovyachtsales.com/en/

Telephones

USA: +1(954)274-4435

Office hours

Monday – Saturday: **9:00 - 21:00** EDT

Sunday: **closed**

Address



Harbour Towne Marina, 850 NE 3rd St,
STE 213, Dania, FL 33004