

## 50 BERTRAM 1988/2010 — BERTRAM



**Судостроитель:** BERTRAM

**Год постройки:** 1988

**Модель:** Катер для спортивной рыбалки

**Цена:** ЦЕНА ЯХТЫ ПО ЗАПРОСУ

**Местонахождение:** United States

**Длина общая:** 50' 0" (15.24m)

**Ширина:** 17' 5" (5.31m)

**Макс. осадка:** 5' 0" (1.52m)

**Крейс. скорость:** 25 Kts. (29 MPH)

**Макс. скорость:** 30 Kts. (35 MPH)

Купить 50 Bertram 1988/2010 — BERTRAM а также выбрать подходящую вам яхту из нашего каталога яхт вам поможет опытный яхтенный брокер Андрей Шестаков. На сегодняшний день компания Shestakov Yacht Sales Inc. имеет большое количество яхт в собственном списке продаж, а также тесно сотрудничает со всеми крупными яхтенными производителями по всему миру.

Для того чтобы купить яхту 50 Bertram 1988/2010 — BERTRAM а также проконсультироваться по любому вопросу связанному с покупкой, продажей, чартером яхт позвоните по телефону **+7(918)465-66-44**.

# ОГЛАВЛЕНИЕ

ОГЛАВЛЕНИЕ	2
ХАРАКТЕРИСТИКИ	3
Обзор	3
Основная информация	3
Размеры	3
Скорость, вместимость и масса	3
Размещение	3
Корпус и палуба	4
Информация о двигателе	4
ПОДРОБНОЕ ОПИСАНИЕ	5
Vessel Information	5
Исключения	8
Отказ от ответственности	8
ФОТОГРАФИИ	9
КОНТАКТЫ	15
Контактная информация	15
Телефоны	15
Время работы	15
Адрес	15

# ХАРАКТЕРИСТИКИ

## Обзор

This is your chance to own an almost brand new boat for a fraction of the cost. Tricked out and customized by the talented CAY Marine refit center, this boat has it all. New engines, new electronics, full paint and over 1 million dollars spent in upgrades and refits. This Bertram 50 is on display at the Miami Yacht and Brokerage Show. She is impressive in all ways and should not last long. Owners want this boat gone!

## Основная информация

**Тип судна:** Катер для спортивной рыбалки

**Модельный год:** 1988

**Год постройки:** 1988

**Год обновления:** 2010

**Страна:** United States

## Размеры

**Длина общая:** 50' 0" (15.24m)

**Ширина:** 17' 5" (5.31m)

**Макс. осадка:** 5' 0" (1.52m)

## Скорость, вместимость и масса

**Крейс. скорость:** 25 Kts. (29 MPH)

**Макс. скорость:** 30 Kts. (35 MPH)

**Водоизмещение:** 56500 Pounds

**Вместимость воды:** 174 Gallons

**Вместимость сточного бака:** 50 Gallons

**Объем топливного бака:** 1065 Gallons

## Размещение

**Всего кают:** 2

---

## Корпус и палуба

---

**Материал корпуса:** Fiberglass

---

## Информация о двигателе

---

**Двигатели:** 2

**Производитель:** MAN

**Тип двигателя:** Inboard

**Тип топлива:** Diesel

# ПОДРОБНОЕ ОПИСАНИЕ

## Vessel Information

### Salon:

Enter from the starboard door into a beautifully redesigned and brand new salon. The salon features U-shaped seating to port, dinette table to starboard, all new woodwork and ultra exclusive genuine wenge flooring.

- Magilite cream headliner · One piece, frameless tempered glass windows ·
- Fabrica, textured, stain resistant premium carpeting in Desert Sand · Genuine wenge flooring with stainless steel insert accents · Outlet receptacles with satin nickel finished housings · Satin nickel finished switch plates · Intramar dimmable LED lighting with satin nickel finished housings · Walls accented by milk colored Whisperwall panels with teak wood inserts · Cruisair Vimar display climate controls · Enormous cockpit facing window · Teak and burl holly dinette table in high gloss finish with teak pedestal · Beautiful high gloss teak cabinetry and woodwork · Custom teak valences and fluted ac ducts · 42" Sony Bravia LED HD TV built in to wall · 5.1 Sony surround sound system · Sony Blu-Ray player · Custom ultra-leather dark chocolate & woven leather brown chocolate sofas with French double stitching · (2) Custom ultra-leather dark chocolate & woven leather brown chocolate ottomans with French double stitching and storage compartments · Sliding door to cockpit · Honed Artic Stone granite accents and countertops · AC/DC panel

### Galley:

Accessed via 3 steps down from the salon, the galley is beautifully decorated and well thought out with ample refrigeration and gorgeous wenge floors.

- Franke under-mount designer stainless steel sink · Princess 2-burner electric cooktop with granite cover · Honed Artic Stone granite accents and countertops · (2) Sub-Zero side by side refrigerators with teak paneling and stainless steel handles · (2) Sub-Zero freezer drawers with teak paneling and stainless steel handles · Ample storage · Hansgrohe designer faucet · Satin nickel finished switch plates · Sole bilge access · Beautiful high gloss teak cabinetry and woodwork · Magilite cream headliner · Genuine wenge flooring with stainless steel insert accents · Outlet receptacles with satin nickel finished housings · Walls accented by milk colored Whisperwall panels with teak wood inserts

### Master Stateroom:

Located to port down the companionway

- Queen sized off-set, walk around berth with custom bedding · Beautiful high gloss teak cabinetry and woodwork · Satin nickel finished switch plates · Magilite cream headliner

- Cruisair Vimar display climate controls · Genuine wenge flooring with stainless steel insert accents · Honed Artic Stone granite accents and countertops · 20" Sony Bravia LED HD TV, flush mounted with custom teak cabinetry · Outlet receptacles with satin nickel finished housings · Walls accented by milk colored Whisperwall panels with teak wood inserts · LED accent rope lights · Large hanging locker with ample space and cedar lining · Stainless steel handles and hardware

### **Master Head:**

Located just forward of the master stateroom.

- Honed Artic Stone granite accents and countertops · Genuine wenge flooring with stainless steel insert accents · Ventilation Fan · Walk in shower with Hansgrohe shower head · Stainless steel hardware · Brushed nickel fixtures · Whisperwall wall coverings in Canyon Beige · Magilite cream headliner · High gloss teak cabinetry · Teak shower stall door with framed glass door · Raritan freshwater head · Tinted emerald glass vessel sink with Brizo satin nickel faucet · Vimar satin nickel light switches
- Mirrored medicine cabinet

### **Guest Stateroom:**

Located forward down the companionway. This room features a desirable 60/40 over/under berth configuration.

- 60/40 over/under style berths · Beautiful high gloss teak cabinetry and woodwork · Satin nickel finished switch plates · Magilite cream headliner · Cruisair Vimar display climate controls · Genuine wenge flooring with stainless steel insert accents · Honed Artic Stone granite accents and countertops · 20" Sony Bravia LED HD TV, flush mounted with custom teak cabinetry · Outlet receptacles with satin nickel finished housings · Walls accented by milk colored Whisperwall panels with teak wood inserts · LED accent rope lights · Large hanging locker with ample space and cedar lining · Stainless steel handles and hardware · Flush mounted Oceanair screen and privacy cover for Bomar hatch

### **Guest Head:**

Located in the companionway.

- Honed Artic Stone granite accents and countertops · Genuine wenge flooring with stainless steel insert accents · Ventilation Fan · Walk in shower with Hansgrohe shower head · Stainless steel hardware · Brushed nickel fixtures · Whisperwall wall coverings in Canyon Beige · Magilite cream headliner · High gloss teak cabinetry · Teak shower stall door with framed glass door · Raritan freshwater head · Tinted emerald glass vessel sink with Brizo satin nickel faucet · Vimar satin nickel light switches
- Mirrored medicine cabinet

### **Companionway:**

· Satin nickel finished switch plates · Magilite cream headliner · Genuine wenge flooring with stainless steel insert accents · Walls accented by milk colored Whisperwall panels with teak wood inserts · Bosch Axxis washer and dryer

### Cockpit:

· CAY Custom Gaggenau grill · Custom ladder · Pompnett fighting chair · Engine room access · Salt water wash down · Freshwater wash down · Overhead lighting in blue and white · (4) Stainless steel rod holders · Freshwater dockside hook up to Port · Water fill to port · Fuel fill to starboard · Secondary · Tackle storage · 50-amp shore power cord to starboard · Stainless steel sink basin with faucet · Shore power connection · Glendenning shore power intake to port · Transom door with lift gate · TV/Phone connection · Fresh water wash down · Drop in freezer · Bilge access · Cleaning storage in gunnel walls · Combing pads · Stainless steel cleats

### Electronics:

· (2) Garmin 5215 multi function displays · Fusion sound system head unit with iPod dock · MAN electronic LED engine computer displays · Ray Marine ST60+ Autohelm Series digital depth and temperature screen · Simrad AP 256 Autopilot · Ritchie compass · Garmin, open array HD radar · (2) iCom IC-M604 VHF's · Fireboy fire suppression switch

### Bridge:

· (2) Bluewater teak ladder back helm chairs · Single lever Palm Beach controls · L-shaped seating forward · Teaser locker · Built in cooler · Suction cup holders · 3-Quarter enclosure · (4) Speakers · Chair covers · Cushion covers · Hardtop with recessed multi color lighting · Spreader lights

### Engine Room:

· (2) V8-900 Common Rail MAN engines at 861 HP each installed in 2010 with 275 hrs as of 1/15/2015 · ZF Transmissions · Vanner 80 amp battery equalizer · New 24 volt DC panel custom by CAY Marine · All new LED lighting · Cruisair air-conditioning units and compressors · (2) Charles 60 amp battery charger · Quicksilver galvanic isolator · New Delta T air intake systems · Hot water heater · (2) Charles C-Power ISOBOOST 50 transformers · (4) Batteries · Fisher Panda generator 12 Mini with 400 hrs (2010)

### Other:

· (3) Ocean LED underwater lights · Engines installed in 2010 · Generator installed in 2010 · Rupp triple spreader outriggers · Windlass with pedals · Bow rail

---

## Исключения

---

При продаже яхты исключаются личные вещи владельца.

---

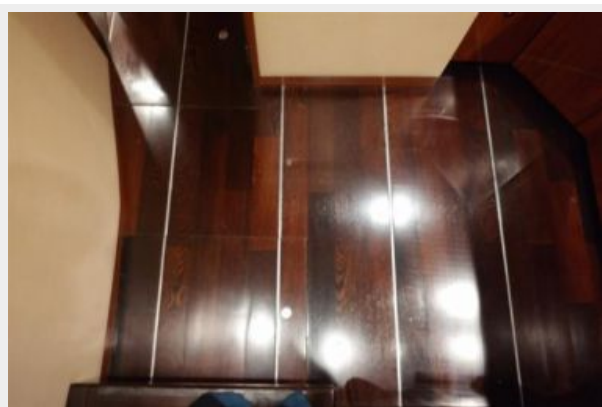
## Отказ от ответственности

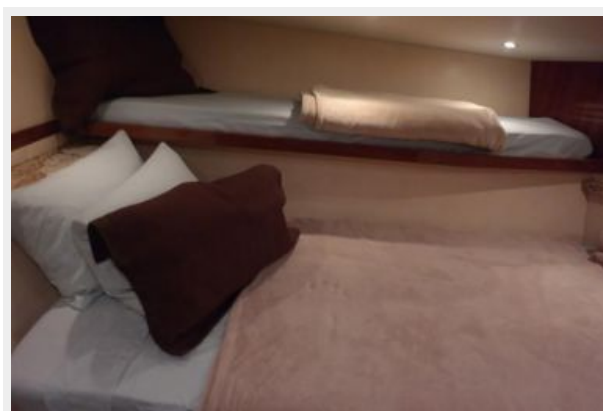
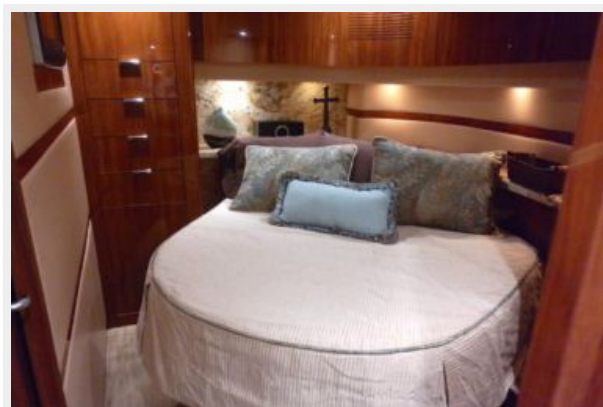
---

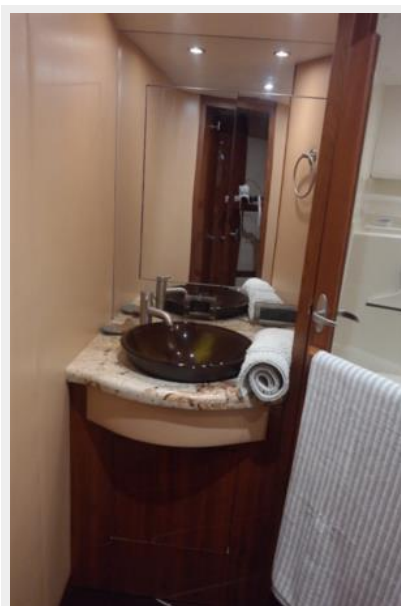
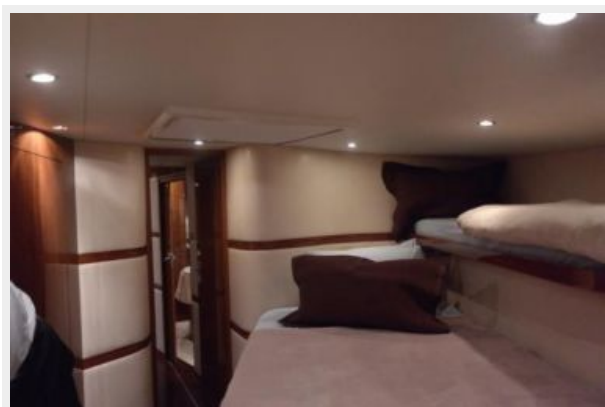
Компания предоставляет описание судна или яхты добросовестно, но не может гарантировать точность этой информации, а также не ручается за техническое состояние. Покупатель должен проинструктировать своих агентов или оценщиков исследовать представленную информацию более подробно, по собственному желанию. Продажа судна или яхты, изменение цены или снятие с продажи будет происходить без предварительного уведомления.



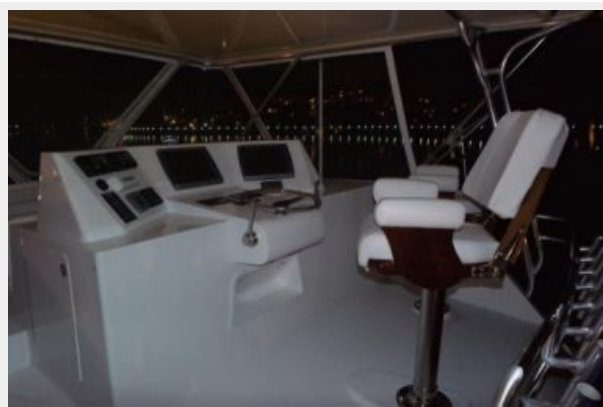
# ФОТОГРАФИИ















# КОНТАКТЫ

---

Андрей Шестаков (Andrey Shestakov) – ведущий яхтенный брокер отдела продаж яхт и судов компании Shestakov Yacht Sales Inc. Официальный представитель Shestakov Yacht Sales Inc. для русскоговорящих клиентов в центральном офисе компании в Майами/Форт Лодердейл/Флорида/США.

## Контактная информация

---

Email: [andrey@shestakovyachtsales.com](mailto:andrey@shestakovyachtsales.com)

Web: [shestakovyachtsales.com](http://shestakovyachtsales.com)

## Телефоны

---

Краснодарский край: **+7(918)465-66-44**

США, Майами, Флорида: **+1(954)274-4435**

## Время работы

---

Понедельник – Суббота: **9:00 - 21:00**  
EDT

Воскресенье: **Закрито**

## Адрес

---



Harbour Towne Marina, 850 NE 3rd St,  
STE 213, Dania, FL 33004