

## AUTO SEA — HARGRAVE



**Builder:** HARGRAVE

**Year Built:** 2006

**Model:** Motor Yacht

**Price:** PRICE ON APPLICATION

**Location:** United States

**LOA:** 82' 0" (24.99m)

**Beam:** 20' 0" (6.10m)

**Max Draft:** 5' 8" (1.73m)

**Cruise Speed:** 20 Kts. (23 MPH)

**Max Speed:** 23 Kts. (26 MPH)

Our experienced yacht broker, Andrey Shestakov, will help you choose and buy a yacht that best suits your needs **AUTO SEA — HARGRAVE** from our catalogue. Presently, at Shestakov Yacht Sales Inc., we have a wide variety of yachts available on our sale's list. We also work in close contact with all the big yacht manufacturers from all over the world.

If you would like to buy a yacht **AUTO SEA — HARGRAVE** or would like help answering any questions concerning purchasing, selling or chartering a yacht, please call **+1(954)274-4435**

---

# TABLE OF CONTENTS

---

TABLE OF CONTENTS	2
SPECIFICATIONS	3
Overview	3
Basic Information	3
Dimensions	4
Speed, Capacities and Weight	4
Accommodations	4
Hull and Deck Information	4
Engine Information	5
DETAILED INFORMATION	6
Vessel Walk-through	6
Exclusions	10
Disclaimer	10
PHOTOS	11
CONTACTS	21
Contact details	21
Telephones	21
Office hours	21
Address	21

---

# SPECIFICATIONS

---

## Overview

---

### 2014 DECOR UPGRADES THROUGHOUT:

New carpeting, blinds, couch, chairs, cushions, bedding, sconces, and lamps.

AUTO SEA is a flush deck motoryacht designed for an experienced owner who wants a family-friendly layout. The layout includes an extremely spacious galley with forward facing seating area backed to the galley counter giving it a view forward across an impressive helm console.

The gloss cherry wood enhanced salon is open and inviting with a comfortable sofa, new (2014) gracious salon chairs and game table with seating for 2.

Below the main deck, four luxurious staterooms can be found including: an amidship master with large walk-in closet and ensuite head, two twin guest staterooms and a spacious VIP forward each with their own ensuite heads.

A separate, large crew quarter for two is easily accessed from the transom.

The Flybridge with its EZ2C enclosure and air conditioning/heating system has dual Stidd helm seats and companion bench seating adjacent to the helm. Two large settees and a well-equipped wet bar make entertaining a breeze. Aft, there is a tender with Quick Lift davit.

Accommodations:

Guest: 4 Staterooms/Sleeps 10    Crew: 1 Cabin/Sleeps 2

---

## Basic Information

---

**Category:** Motor Yacht

**Sub Category:** Flushdeck

**Model Year:** 2007

**Year Built:** 2006

**Country:** United States

**Vessel Top:** Hardtop

**Fly Bridge:** Yes

---

## Dimensions

---

**LOA:** 82' 0" (24.99m)

**LWL:** 72' 11" (22.22m)

**Beam:** 20' 0" (6.10m)

**Max Draft:** 5' 8" (1.73m)

**Clearance:** 30' 0" (9.14m)

---

## Speed, Capacities and Weight

---

**Cruise Speed:** 20 Kts. (23 MPH)

**Max Speed:** 23 Kts. (26 MPH)

**Water Capacity:** 600 Gallons

**Holding Tank:** 100 Gallons

**Fuel Capacity:** 3000 Gallons

---

## Accommodations

---

**Total Cabins:** 4

**Total Berths:** 8

**Sleeps:** 10

**Total Heads:** 5

**Captain Cabin:** True

**Crew Cabin:** 1

**Crew Berths:** 1

**Crew Sleeps:** 2

**Crew Heads:** 1

---

## Hull and Deck Information

---

**Hull Material:** FRP

**Deck Material:** Fiberglass

**Hull Color:** White

**Hull Finish:** Stainless Steel

---

## Engine Information

---

**Engines:** 2

**Manufacturer:** Caterpillar

**Model:** C-30

**Engine Type:** Inboard

**Fuel Type:** Diesel

---

# DETAILED INFORMATION

---

## Vessel Walk-through

---

### 2014 DECOR UPGRADES THROUGHOUT:

New carpeting, blinds, couch, chairs, cushions, bedding, sconces, and lamps.

AUTO SEA is a flush deck motoryacht designed for an experienced owner who wants a family-friendly layout. The layout includes an extremely spacious galley with forward facing seating area backed to the galley counter giving it a view forward across an impressive helm console. Enjoy alfresco meals at the handsome inlaid aft deck table, which seats 10 comfortably.

**GALLEY:** The large country kitchen boasts a huge forward facing dinette which is really a fun place to be while underway. The C-shaped dinette is raised to galley counter height and gives guests an unobstructed view across from an impressive helm console.

The Stidd helm chairs will swing around and add two extra seats at the galley dinette.

Extra space between the appliances and prep island is just what the Chef ordered for preparing family meals and plenty of room for multiple cooks!

### Seagull Water Purifier

GE Profile JP960BKBB Black Cooktop w/JRP20BJ Black Oven GE Profile JVM1870BF Black Microwave GE Profile PS123MGRBV Black Refrigerator with Cherry Panel GE GFC720F Black Disposal GE Profile PDW8700LBB Black Dish Washer with Cherry Panel Insta Hot H-770 The gloss cherry wood enhanced salon is open and inviting with a comfortable sofa, new (2014) gracious salon chairs

Below the main deck, four luxurious staterooms can be found including: an amidship master with large walk-in closet and ensuite head, two twin guest staterooms and a spacious VIP forward each with their own ensuite heads.

**MASTER:** The owner's stateroom is full-beam aft. The large bath and walk in closet provide extra insulation from the machinery space. King Berth, Ensuite head. New carpet, bedding and shams. **VIP:** VIP Stateroom is forward. With ensuite head. Finished in high gloss cherry paneling **GUEST:** There are two guest staterooms with twin lower berths and pullmans. The guest

staterooms have ensuite heads. Finished in high gloss cherry paneling. **LOWER FOYER:** GE White Washer/Dryer **FLYBRIDGE:**

The fly bridge has a small observation settee to port of the helm and 2 Stidd chairs. EZ2CY enclosure under the hardtop and air conditioning provide for all weather comfort on the flybridge. Two separate seating and dining areas. Custom Bar w/granite top and w/3 SS Bar Stools with refrigerator and ice maker.

Flood lights under radar arch x 2

FRP Cabinet for Jennair Grill Folding bench with hardware Plexiglass 3" Chart Cover Umbrella holders Deck chair storage for 3 chairs Quick Lift Davit 1600lb w/hydraulic rotation **CREW:** A separate, large crew quarter for two is easily accessed from the transom.

**INTERIOR EQUIPMENT:** Cherry wood interior

Majillite Upholstery in specified areas (6) Headhunter heads Smoke Detection and Alarm System Lacquer shower walls (5) staterooms Cork wall paper in Day Head Clear acrylic shelves in china cabinet in salon Mirrors added to port holes in twin staterooms Mirrors top and bottom in VIP head Vimar switches plus (9) dimmers TV cable outlets x 3 located aft deck, flybridge and helm areas Black Paint F2091 & Gold Formica in Master Stateroom Marble floor for Master and Dayhead Marble Shower Seat in master, VIP, twins, Console in foyer Frameless glass for master shower doors Mirrored Ceilings in bathrooms x 5 Lazy Susan in upper cabinet in galley Pullman berths in port & stbd cabins 2 Pilothouse doors Safe in master cabin Kohler sinks in bathrooms Kohler K5931-4U Executive Chef Almond sink in Galley Automatic Air Door w/Sensor and Manual Override at Aft Deck Safety rails around twin engines in ER Satin Cherry chair rail in Dayhead Zeno Mattresses for all staterooms Linen cabinet in VIP Lift-up Storage area in Crew Cabin **AUDIO AND VISUAL EQUIPMENT:** DirecTV DSS Receiver mounted in Stbd Guest Concord IR Expansion mounted in Stbd Guest Pioneer DVH5000MP mounted in Stbd Guest Concord Game / CAM Port mounted in Stbd Guest Sharp 15" LCD TV SB Silver mounted in Crew Peerless Bulkhead Mount mounted in Crew Pioneer DVH5000MP mounted in Crew DirecTV DSS Receiver mounted in Crew Concord IR Expansion mounted in Crew Pollyplanar MRD 60 AM/FM/CD mounted on Flybridge Pollyplanar MCD-6CD Changer mounted on Flybridge Pollyplanar IMR 4 Interface mounted on Flybridge Newmar 32-12 Conv 25A mounted on Flybridge MB Quart NKA 116 Speakers mounted on Flybridge x 2 Sharp LCD 20" Aquos Bottom portable Concord Surge Outlet Strip x 10 Concord Monster Cables AC to DC Power Supply for DC12V Stereo System in Master, VIP, Port & Stbd Cabins Dantronics Delta Digital HD TV Dantronics Mast Bracket **ELECTRONICS:**

Danforth Compass 5" in Flybridge helm

ACR RCL-100B 24V Searchlight x 2 mounted at hard top fwd

Flex light at helm KVH Tracvision 4 USA KVH Dummy Dome Tropica 5" KVH T4/G4 Tower x 2

Spaun Multiswitch 5 x 8 Samsung 17" LCD w/Tuner mounted at lower helm Furuno 1953CBB  
 12KW 6' C-NT mounted at lower helm Furuno 1953 C30 Mtr Cable Furuno 1953BB Control  
 Flush mounted in lower helm x 2 Furuno BB FF1 Navnet FF mounted in lower helm Furuno  
 525ST-MSD7 50/200KHZ Furuno Fair For 525ST-MSD Furuno 525 STMSD 4 M Ducer Furuno  
 Network Hub Furuno Network Cable 5M Furuno NMEA 7 PIN Data Cable Furuno NMEA 6 PIN  
 Data Cable x 6 Furuno ARP 11 Target Plotter mounted at lower helm Furuno GP 1900 CBB NT  
 mounted in upper helm Furuno Network Cable 20 MTR Furuno Network GPS Ext Cable Lilly  
 Basic Stainless GPS x 2 Furuno GP 37 DGPS+WAAS Combi mounted in lower helm Furuno GP  
 37 Ant Cable Simrad AP 25 W/AC20 & RPU-80 mounted in lower helm Simrad AP 25 Second  
 Station mounted in upper helm Simrad Simnet- 10M Cable ICOM IC-M602 VHF Black mounted  
 in upper & lower helm x 2 ICOM Flush Mount Kit 602 mounted in upper & lower helm x 2 ICOM  
 HM 127 Blk Command Mic mounted in upper & lower helm x 2 ICOM Extension Cable 20'  
 mounted in upper & lower helm x 4 Speco Hailer Horn Large mounted on fwd hardtop x 2 Speco  
 Hailer Horn Ext Cable mounted on fwd hardtop x 150 Digital 16' 10DB VHF Wht x 2 Digital  
 Custom Cable x 150 Lilly Round Swivel x 2 Lilly Upper Support x 2 Lilly Dog Bone x 2  
 Raymarine ST 60 Depth Display mounted in upper & lower helm x 4 Raymarine B45 Long Stem  
 mounted at hull, port & stbd x 2 Raymarine ST 60 Depth Ducer mounted at hull, port & stbd x 100  
 Raymarine ST 60 Wind 50 Mtr mounted in lower helm Raymarine ST 60 Graphic mounted in  
 Capt & Master x 2 Raymarine Seataalk Cable 20 MTR x 4 Raymarine Seataalk Cable, 3M x 2  
 Raymarine NMEA/Seataalk x 2 Samsung 17" LCD w/Tuner mounted in lower helm Concord  
 Computer Case mounted in lower helm Concord Computer Cables Nauticomp Mouse, Panel  
 Mount mounted in upper helm Part Cable VGA 50 FT Part Cable VGA 25 FT x 2 Part Cable  
 VGA 10 FT x 2 Concord Video Splitter/AMP 4 mounted in lower helm x 2 Concord VGA to NTSC  
 Conv mounted in lower helm x 2 Channel Plus Modulator Quad mounted in lower helm Xantrex  
 Prosine 1000/24 HW Xantrex 1000W Install Kit Nobeltec IR2-4.4KW/4.5' OA/ADM Nobeltec  
 20M Cable Array Furuno 12" LCD Color Display mounted in upper helm x 2 ACR RCL 100B  
 24V Spotlight mounted in upper & lower helm x 2 ACR URC 102 Master Control Unit mounted in  
 upper & lower helm x 2 Panasonic PH 624 ADV Hybrid Panasonic PH 624, 3 CO & 8 Ext  
 Panasonic PH 624 Fax Panasonic PH T-7731-B Speaker x 8 Seatel W 3000 System w/Remote  
 Seatel 3000 50" TX/RX Cable Samsung 17" LCD w/Tuner mounted in lower helm camera  
 system Panasonic CAM 3 Camera PTZ mounted in engine room Concord Low Level Amp  
 Concord Glass Bridge PC mounted at lower helm Relocate existing depth display Concord  
 Cordless Key/Mouse mounted in lower helm Concord RF Handheld Mouse mounted in upper  
 helm Nobeltec Region 7 Deluxe DVD Florida East Coast & The Keys Nobeltec Region 9 Deluxe  
 DVD The Bahamas & Bermuda Nobeltec XM Plus Pack Panasonic PH Cordless Panasonic PH  
 Programming x 9 Nobeltec Passport Deluxe-1 US Regions x 4 CMAP Max USD1MEGA Wide  
 Chip x 3 Magellan VRM GSM 24V Magellan Key FOB x 3 Magellan Door Contacts x 5 Magellan  
 Motion Detectors mounted in Salon, Galley and VIP Magellan High Water Magellan Smoke  
 Detector x 2 Magellan Light Switcher Rely mounted in Salon and Aft Deck x 2 Magellan SIM  
 Card WxWorx WXTunes Package Lilly Basic Stainless GPS Mount Nauticomp GLS 19" Sunlight  
 mounted on upper helm Furuno GP 1720C NT mounted in upper helm stbd side Furuno Network  
 Cable 20 MTR **MECHANICAL:** Sea Chest Groco Seastrainers White perforated insulation  
 panels in Engine Room Windshield wipers with blades 100 AMP Galvanic Isolator Twin 32 kW  
 Northern Lights generators w/soundshield Layer of insulation in wall between VIP & Guest



Staterooms Three layers of insulation between engine room and master stateroom Bennett trim tabs without gauges Dolphin Battery Charger 30AMP 12V + 30AMP 24V+ 80AMP (3) 100 AMP Sentry/Dolphin AC/DC light transformer 110/24V Double insulated engine room Airtex Watertight door to engine room Watertight bulkheads in engine room Naiad stabilizer system Model 302 with 9 sq. ft. fin w/multi 2000 Double stabilizer & bow thruster backup pump on back of prt & stb engine Naiad 36hp Stern Thruster Hydraulic Naiad Stabilizer hull fairing parts Total fuel capacity - 3000 gallons (4) Delta-T Filters and Delta-T Fans Algae X fuel filter system x 2 Mufflers for Main Engines by Pass Double Racor filters on main engines Engine room Seafire w/manual pulls Glendining w/1 remote (4) fixed stations Horn Button - aft control stations x 2 Jabsco Emergency Crash Clutch Pump 3/Pick-ups in Laz, ER, Master One oil change Reverso oil pump One fuel change Oberdorfer oil pump w/ Fillrite flow meter 100 amp Cablemaster systems with 125' cord out stern Fast Hot Water system / hot water circulating pump (4) Three ton Cruiseair Chilled Water System total 12 Tons Top Deck Air Conditions 24000 BTU x 2 Corner Hawsers w/Rollers and cleats on main deck back Shaft Spurs Stern Cleats to Pods Tide Seal Marine driplless shaft logs & rudder post 4" Maxwell stern 2200 Capstans at both sides of aft deck SS 316 Plow anchor in 150 lbs with 300' chain & Nilsson 24V Windlass

#### Sea Recovery Watermaker

Watermaker through hull and breaker 220 Kahlenberg D-OA Stack Trumpet Air Horn Nutone CV357 central vacuum system Two Fluorescent lights in Engine Room

#### Spot Free 5000 Water apparatus

Safety Package-Life Jackets/Fenders/Fire Extinguishers/Dock Lines/Flares/Dual plug phone/TV cord

#### Head Hunter Waste Treatment System

### **EXTERIOR:**

Extra 2 3/8" stainless steel oval hull banding w/wooden insert

(8) Waterproof lights on bow Quartz lights on aft deck Flood lights under radar arch x 2 FRP Cabinet for Jennair Grill on Flybridge Custom Bar w/granite top and w/3 SS Bar Stools on Flybridge Folding bench with hardware on Flybridge Plexiglass 3" Chart Cover on Flybridge Umbrella holders on Flybridge Deck chair storage for 3 chairs on Flybridge Teak cabinet on aft deck Aft deck bench seating Aft deck teak chairs (6) Aft deck teak table with custom inlay "Compass Rose" Folding chairs on Flybridge x 4 Custom locker on aft deck to store boarding ladder SS Chaffing ring around opening for both sides at aft deck Grab rail on transom side for boarding (6) "U" shape stanchions at swim platform (13) Large port holes 24" x 10" molded into hull Winslow 6-person super-lite offshore raft x 2/ White Pelican case 1/cradle Marquipt Sea Stairs (2) Stidd Chairs **TENDER:** 14ft AB Rib Accommodations:

Guest: 4 Staterooms/Sleeps 10 Crew: 1 Cabin/Sleeps 2

---

## Exclusions

---

Owner's personal belongings.

---

## Disclaimer

---

The Company offers the details of this vessel or yacht in good faith but cannot guarantee or warrant the accuracy of this information nor warrant the condition of the vessel. A buyer should instruct his representatives, agents, or his surveyors, to investigate such details as the buyer desires validated. This vessel or yacht is offered subject to prior sale, price change, or withdrawal without notice.

# PHOTOS















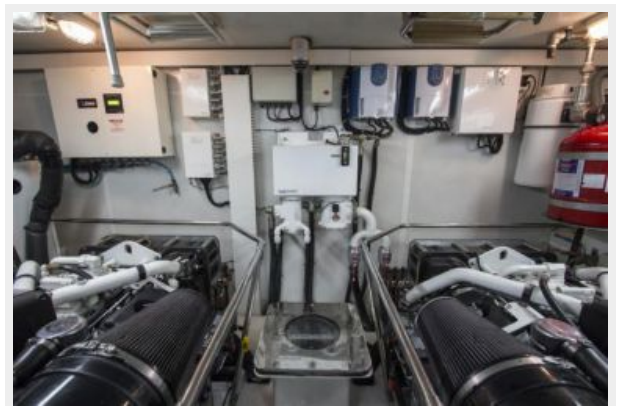


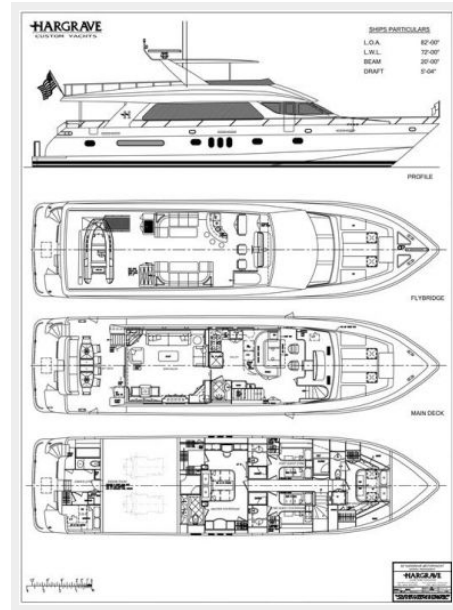












# CONTACTS

---

Andrey Shestakov, leading yacht broker of the sales department of Shestakov Yacht Sales Inc. Shestakov Yacht Sales Inc., the official representative of the Miami/Fort Lauderdale FL headquarters.

## Contact details

---

Email: [andrey@shestakovyachtsales.com](mailto:andrey@shestakovyachtsales.com)

Web: [shestakovyachtsales.com/en/](http://shestakovyachtsales.com/en/)

## Telephones

---

USA: +1(954)274-4435

## Office hours

---

Monday – Saturday: **9:00 - 21:00** EDT

Sunday: **closed**

## Address

---



Harbour Towne Marina, 850 NE 3rd St,  
STE 213, Dania, FL 33004