

SERIOUSLY FOR SALE — SEA RAY



Builder: SEA RAY

Year Built: 2008

Model: Cruiser

Price: PRICE ON APPLICATION

Location: United States

LOA: 35' 0" (10.67m)

Beam: 12' 0" (3.66m)

Min Draft: 2' 3" (0.69m)

Max Draft: 3' 1" (0.94m)

Our experienced yacht broker, Andrey Shestakov, will help you choose and buy a yacht that best suits your needs **Seriously for Sale — SEA RAY** from our catalogue. Presently, at Shestakov Yacht Sales Inc., we have a wide variety of yachts available on our sale's list. We also work in close contact with all the big yacht manufacturers from all over the world.

If you would like to buy a yacht **Seriously for Sale — SEA RAY** or would like help answering any questions concerning purchasing, selling or chartering a yacht, please call **+1(954)274-4435**

TABLE OF CONTENTS

TABLE OF CONTENTS	2
SPECIFICATIONS	5
Basic Information	5
Dimensions	5
Speed, Capacities and Weight	5
Accommodations	5
Hull and Deck Information	5
Engine Information	5
PHOTOS	6
Port Profile	6
Starboard Bow	6
Port Bow	6
Bow	6
Port Seating	7
Facing Forward	7
Helm	7
Helm Seating	7
Helm	8
Helm	8
Wet Bar	8
Helm	8
Starboard Swim Platform Speaker	9
Wet Bar	9
Port Swim Platform Speaker	9
Facing aft	9
Cabin	10
Facing Aft	10
Starboard Facing aft	10

Starboard Seating	10
Facing aft	10
Facing aft	10
Forward Master Berth	11
Galley	11
1 of 3 Televisions	11
Forward berth Television	11
Starboard facing forward	11
Galley	11
Galley	12
Galley	12
Starboard berth	12
Port Galley Window	12
Aft seating	12
Aft Seating	12
Head / Shower	13
Head	13
Head	13
Bow Thruster	13
Bow Thruster	13
Bow Thruster	13
Engine Compartment	14
Generator	14
Layout	14
Waste System	14
Layout	15
CONTACTS	16
Contact details	16
Telephones	16

Office hours	16
Address	16

SPECIFICATIONS

Basic Information

Category: Cruiser

Sub Category: Express

Model Year: 2008

Year Built: 2008

Country: United States

Dimensions

LOA: 35' 0" (10.67m)

Beam: 12' 0" (3.66m)

Min Draft: 2' 3" (0.69m)

Max Draft: 3' 1" (0.94m)

Speed, Capacities and Weight

Displacement: 18064 Pounds

Water Capacity: 50 Gallons

Holding Tank: 28 Gallons

Fuel Capacity: 225 Gallons

Accommodations

Total Berths: 6

Total Heads: 1

Hull and Deck Information

Hull Material: Fiberglass

Engine Information

Engines: 2

Manufacturer: Mercruiser

Model: 8.1 Horizon

Fuel Type: Gas/Petrol

PHOTOS

Port Profile



Starboard Bow



Port Bow



Bow



Port Seating



Facing Forward



Helm Seating



Helm



Helm



Helm



Helm



Wet Bar



Wet Bar



Starboard Swim Platform Speaker



Port Swim Platform Speaker



Facing aft



Cabin



Facing Aft



Starboard Facing aft



Starboard Seating



Facing aft



Facing aft



Galley



Forward Master Berth



1 of 3 Televisions



Forward berth Television



Starboard facing forward



Galley



Galley



Galley



Starboard berth



Port Galley Window



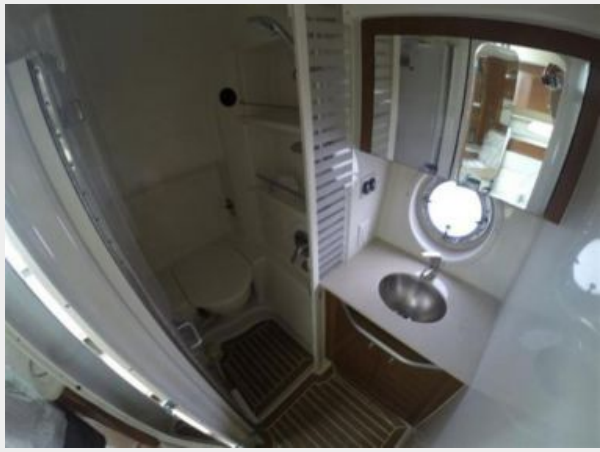
Aft seating



Aft Seating



Head / Shower



Head



Head



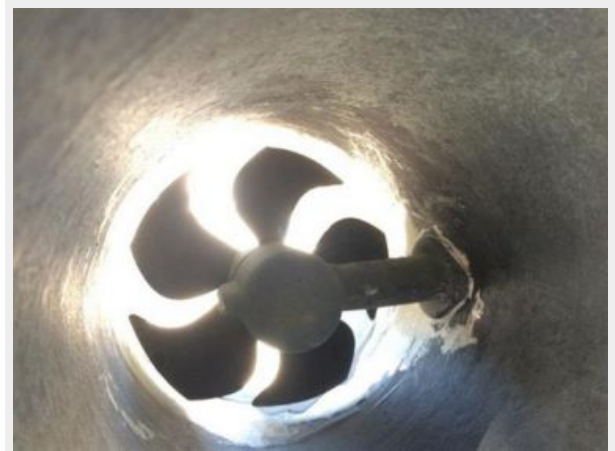
Bow Thruster



Bow Thruster



Bow Thruster



Engine Compartment



Generator



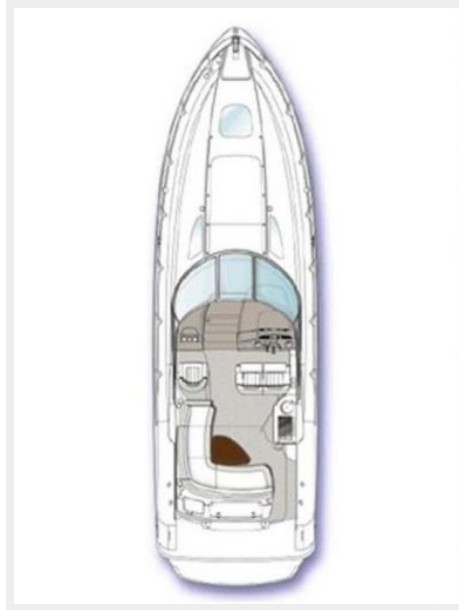
Waste System



Layout



Layout



CONTACTS

Andrey Shestakov, leading yacht broker of the sales department of Shestakov Yacht Sales Inc. Shestakov Yacht Sales Inc., the official representative of the Miami/Fort Lauderdale FL headquarters.

Contact details

Email: andrey@shestakovyachtsales.com

Web: shestakovyachtsales.com/en/

Telephones

USA: +1(954)274-4435

Office hours

Monday – Saturday: **9:00 - 21:00** EDT

Sunday: **closed**

Address



Harbour Towne Marina, 850 NE 3rd St,
STE 213, Dania, FL 33004