

BRAVADO — ABEKING & RASMUSSEN



Builder: ABEKING & RASMUSSEN

Year Built: 2004

Model: Motor Yacht

Price: PRICE ON APPLICATION

Location: Italy

LOA: 147' 4" (44.90m)

Beam: 28' 7" (8.70m)

Max Draft: 9' 3" (2.80m)

Cruise Speed: 12 Kts. (14 MPH)

Max Speed: 14 Kts. (16 MPH)

Our experienced yacht broker, Andrey Shestakov, will help you choose and buy a yacht that best suits your needs **BRAVADO — ABEKING & RASMUSSEN** from our catalogue. Presently, at Shestakov Yacht Sales Inc., we have a wide variety of yachts available on our sale's list. We also work in close contact with all the big yacht manufacturers from all over the world.

If you would like to buy a yacht **BRAVADO — ABEKING & RASMUSSEN** or would like help answering any questions concerning purchasing, selling or chartering a yacht, please call **+1(954)274-4435**

TABLE OF CONTENTS

TABLE OF CONTENTS	2
SPECIFICATIONS	4
Overview	4
Basic Information	4
Dimensions	4
Speed, Capacities and Weight	4
Accommodations	5
Hull and Deck Information	5
Engine Information	5
DETAILED INFORMATION	6
CONSTRUCTION	6
MAIN CHARACTERISTICS	6
MACHINERY	7
ACCOMMODATION	9
GALLEY & LAUNDRY EQUIPMENT	9
COMMUNICATIONS, NAVIGATION & ENTERTAINMENT EQUIPMENT	10
TENDERS & WATERSPORTS EQUIPMENT	11
DECK EQUIPMENT	11
SAFETY & SECURITY EQUIPMENT	11
COMMENTS	12
EXCLUSIONS	12
Exclusions	12
Disclaimer	12
PHOTOS	13
CONTACTS	16
Contact details	16
Telephones	16
Office hours	16

Address

16

SPECIFICATIONS

Overview

Built in 2004 by the shipyard Abeking & Rasmussen, BRAVADO is currently one of the very few German built yachts of this size on the market. With exceptional volume and impeccably maintained, BRAVADO is sure to attract plenty of attention from savvy Buyers.

Basic Information

Category: Motor Yacht

Sub Category: Displacement

Model Year: 2004

Year Built: 2004

Country: Italy

Fly Bridge: Yes

Cockpit: Yes

Dimensions

LOA: 147' 4" (44.90m)

Beam: 28' 7" (8.70m)

Max Draft: 9' 3" (2.80m)

Speed, Capacities and Weight

Cruise Speed: 12 Kts. (14 MPH)

Max Speed: 14 Kts. (16 MPH)

Displacement: 1084674.32904 Pounds

Gross Tonnage: 525 Pounds

Water Capacity: 17800 Gallons

Fuel Capacity: 74500 Gallons

Fuel Consumption: 130 Gallons

Accommodations

Total Cabins: 6

Total Berths: 12

Sleeps: 12

Total Heads: 6

Captain Cabin: True

Crew Cabin: 6

Crew Berths: 7

Crew Sleeps: 7

Hull and Deck Information

Hull Material: Steel

Hull Color: White

Interior Designer: Reymond Langton
Design

Engine Information

Manufacturer: MTU

Model: 16V2000M60

Fuel Type: Diesel

DETAILED INFORMATION

CONSTRUCTION

Steel Hull Aluminium Superstructure

MAIN CHARACTERISTICS

General

BUILDER:	Abeking & Rasmussen
YEAR:	2004
LOA:	44.9m/147' 3"
BEAM:	8.7m/28' 6"
DRAFT:	2.8m/9' 2"
CLASSIFICATION:	Lloyds
GROSS TONS:	525 Tons
NET TONS:	157 Tons
DISPLACEMENT:	492
DESIGNER:	Reymond Langton Design Ltd
NAVAL ARCHITECT:	Abeking & Rasmussen

INTERIOR DESIGNER: Reymond Langton Design

HULL COLOUR: White

Capacities

CRUISE SPEED: 12 Knots (approx)

MAXIMUM SPEED: 14 Knots (approx)

FUEL CAPACITY: 74,500 Litres (19,680 US Gallons)

WATER CAPACITY: 17,800 Litres (4,702 US Gallons)

FUEL CONSUMPTION: 130 l/h

MACHINERY

ENGINES: 2 x MTU 1,070HP

ENGINE MODEL: 16V2000M60

ENGINE HOURS: Port: 10,153hrs (2-Feb-2015)
Starboard: 10,039hrs (2-Feb-2015)

FUEL: DIESEL

PROPULSION: PROP SHAFT

GEARBOXES: ZF BW250 Reduction Ratio 4.15:1

STEERING: Hydraulic Steering Gear HC 623.0040.05

Generators

GENERATORS: 2 x MTU 6R183 TE52 Engine + Leroy-Somer Alternator

Port: 18.846 (Feb-15)

GENERATOR HOURS: Stbd: 18.690 (Feb-15)

Electricity

ELECTRICITY: 3 x 400v /230 v 50 hz 2 x 160 kw

SHORE POWER: Shore Power Converter Exendis Marpower 170/520v 75/125 kva 300A

BATTERIES: 24v Emergency 645 A/h

Air Conditioning

Drews Chiller Plant Refrigerant R404A 4 Compressors 146kw each

Other Machinery

Stabilizers: Quantum QC 1200 ZERO SPEED

Reverse Osmosis Plant: HEM 30 Duplex 14 lt/min

Sterilizer Plant: HEM FW5205

Air Compressor: 2 x Sauer WP 15L

ACCOMMODATION

CABINS

1 Owner cabin with gym

1 Main guest cabin with double bed

2 Guest cabins with double bed

2 Guest cabins with 2 single beds

1 Captain cabin with double bed

4 Crew cabins with 2 single beds

1 Crew cabin with 1 single bed

GALLEY & LAUNDRY EQUIPMENT

· 2 Big Fridges · 1 Big Freezer

· 2 Wine Fridges · 3 Little Freezers

- 4 Little Fridges
- 1 Dishwasher
- 2 Washing machines
- 2 Tumble dryers
- 2 Ice machines
- 1 Food Lift (Main deck to sundeck)

COMMUNICATIONS, NAVIGATION & ENTERTAINMENT EQUIPMENT

Communications Equipment

- 2 VHF Sailor
- 1 MF Sailor
- Inmarsat C
- 2 satellite phones (Inmarsat and Intellian)
- AIS
- Navtex Furuno
- Facsimile receiver Furuno

Navigation Equipment

- 2 Radars (X,S)
- Plotter
- Log
- Echosounder
- 2 GPS
- 1 Epirb
- 1 SART

Entertainment Equipment

- TV Intellian (2 antennas) · Internet by KVH (1 antenna)
- 12 TV receivers

TENDERS & WATERSPORTS EQUIPMENT

- 1 Tender Novurania (9 pers.) · 1 Wave runner Yamaha 2p
- 1 dinghy (4 pers.) · Compressor for recharging diving tanks

DECK EQUIPMENT

- 1 Crane top deck for the tender and Wave R · 1 Crane on the bow
- 1 Jacuzzi for 4 p

SAFETY & SECURITY EQUIPMENT

- 2 Life rafts (25 pers. each) · 40 Life jackets
- 24 Extinguishers · 11 Fire stations

- 2 fire equipments
- CO2 in engine room
- Marpol prevention equipment

COMMENTS

GRT Can be reduced to 499t taking away stern glasses in main deck.

MCA would accept the yacht if 499t.

EXCLUSIONS

A complete list of exclusions is available upon request.

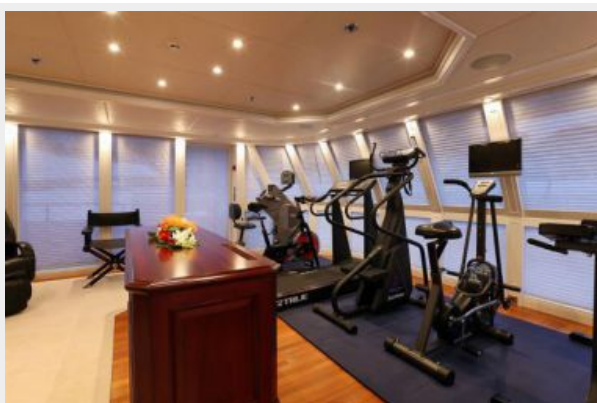
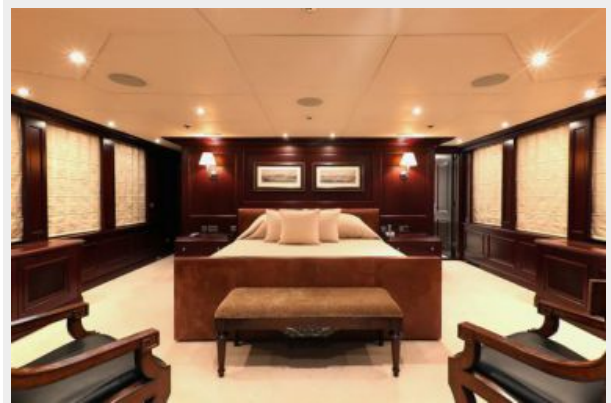
Exclusions

Owner's personal belongings.

Disclaimer

The Company offers the details of this vessel or yacht in good faith but cannot guarantee or warrant the accuracy of this information nor warrant the condition of the vessel. A buyer should instruct his representatives, agents, or his surveyors, to investigate such details as the buyer desires validated. This vessel or yacht is offered subject to prior sale, price change, or withdrawal without notice.

PHOTOS







CONTACTS

Andrey Shestakov, leading yacht broker of the sales department of Shestakov Yacht Sales Inc. Shestakov Yacht Sales Inc., the official representative of the Miami/Fort Lauderdale FL headquarters.

Contact details

Email: andrey@shestakovyachtsales.com

Web: shestakovyachtsales.com/en/

Telephones

USA: +1(954)274-4435

Office hours

Monday – Saturday: **9:00 - 21:00** EDT

Sunday: **closed**

Address



Harbour Towne Marina, 850 NE 3rd St,
STE 213, Dania, FL 33004