

BLACKJACK — VIKING SPORT CRUISERS



Builder: VIKING SPORT CRUISERS

Year Built: 2003

Model: Cruiser

Price: PRICE ON APPLICATION

Location: United States

LOA: 84' 0" (25.60m)

Beam: 20' 4" (6.20m)

Max Draft: 6' 0" (1.83m)

Cruise Speed: 21 Kts. (24 MPH)

Max Speed: 27 Kts. (31 MPH)

Our experienced yacht broker, Andrey Shestakov, will help you choose and buy a yacht that best suits your needs **BLACKJACK — VIKING SPORT CRUISERS** from our catalogue. Presently, at Shestakov Yacht Sales Inc., we have a wide variety of yachts available on our sale's list. We also work in close contact with all the big yacht manufacturers from all over the world.

If you would like to buy a yacht **BLACKJACK — VIKING SPORT CRUISERS** or would like help answering any questions concerning purchasing, selling or chartering a yacht, please call **+1(954)274-4435**

TABLE OF CONTENTS

| | |
|------------------------------------|----|
| TABLE OF CONTENTS | 2 |
| SPECIFICATIONS | 5 |
| Overview | 5 |
| Basic Information | 5 |
| Dimensions | 5 |
| Speed, Capacities and Weight | 5 |
| Accommodations | 6 |
| Hull and Deck Information | 6 |
| Engine Information | 6 |
| DETAILED INFORMATION | 7 |
| Salon | 7 |
| Dining | 7 |
| Galley | 8 |
| Pilothouse | 8 |
| Master Stateroom | 8 |
| Master Head | 9 |
| VIP Stateroom / Forward | 9 |
| Guest Stateroom / Port | 9 |
| Guest Stateroom / Starboard | 10 |
| Captain & Crew's Quarters | 10 |
| Electrical Equipment | 11 |
| Electronics & Navigation Equipment | 11 |
| Cockpit | 12 |
| Fore Deck | 12 |
| Flybridge | 12 |
| Deck Equipment | 13 |
| Engine Room | 13 |
| Remarks | 13 |

| | |
|--------------------|----|
| Exclusions | 14 |
| Exclusions | 14 |
| Disclaimer | 14 |
| PHOTOS | 15 |
| Aft Deck | 15 |
| Aft Deck | 15 |
| Salon | 15 |
| Salon | 15 |
| Salon / TV | 15 |
| Salon | 15 |
| Dining | 16 |
| Galley | 16 |
| Galley | 16 |
| Galley | 16 |
| Galley | 16 |
| Day Head | 16 |
| Master Stateroom | 17 |
| Master Stateroom | 17 |
| Master Head | 17 |
| Lower Companionway | 17 |
| VIP Stateroom | 17 |
| VIP Stateroom | 17 |
| VIP Head | 18 |
| Guest Stateroom | 18 |
| Guest Head | 18 |
| Guest Stateroom | 18 |
| Laundry | 18 |
| Bow | 18 |
| Bow | 19 |

| | |
|--------------------|----|
| Flybridge / Helm | 19 |
| Flybridge Seating | 19 |
| Flybridge / Settee | 19 |
| Flybridge | 19 |
| Flybridge | 19 |
| Walk-Around Decks | 20 |
| Boat Deck | 20 |
| Engine Room | 20 |
| Engine Room | 20 |
| Aft View | 20 |
| CONTACTS | 21 |
| Contact details | 21 |
| Telephones | 21 |
| Office hours | 21 |
| Address | 21 |

SPECIFICATIONS

Overview

"Blackjack" is a rare opportunity to own one of the few yachts in its size class that can literally do it all. Featuring four staterooms, two of which house Pullman berths, this yacht will accommodate a total of ten, and is perfect for a large family or an owner with a lot of guests.

"Blackjack" has spent her life between the Pacific Northwest, and the Northeast US, so she shows almost no wear on her exterior teak decks and gel coat. The metals all shine as they should, and the interior of the yacht is pristine. There is no other yacht in this size class that will come close in condition. A must see!

Basic Information

Category: Cruiser

Model Year: 2003

Year Built: 2003

Country: United States

Vessel Top: Hardtop

Fly Bridge: Yes

Cockpit: Yes

Dimensions

LOA: 84' 0" (25.60m)

Beam: 20' 4" (6.20m)

Max Draft: 6' 0" (1.83m)

Speed, Capacities and Weight

Cruise Speed: 21 Kts. (24 MPH)

Cruise Speed RPM: 1750 Kts.

Max Speed: 27 Kts. (31 MPH)

Max Speed RPM: 2350 Kts.

Water Capacity: 504 Gallons

Holding Tank: 130 Gallons

Fuel Capacity: 2220 Gallons

Accommodations

Total Cabins: 4

Total Heads: 4

Captain Cabin: True

Crew Cabin: 1

Crew Heads: 1

Hull and Deck Information

Hull Material: Fiberglass

Hull Configuration: Semi Vee

Engine Information

Manufacturer: MTU

Model: DDC 16V2000

Engine Type: Inboard

Fuel Type: Diesel

DETAILED INFORMATION

Salon

The Luxury Edition decor features Indigo Sunrise Decor Scheme with a combination of soft and vibrant colors creating a warm and inviting interior that is easy to live with, but still strong enough to provide a sophisticated design impact. The principal colors that create the mood include soft honey tones, a mid-range navy blue and bronze accents. The feeling is contemporary with overtones of traditional values that lend a richness and strength to the interior. This color scheme was chosen to enhance the beautiful cherry wood interior that makes this yacht an extraordinary work in every detail of its craftsmanship.

The carpeting throughout the entire yacht is a soft, thick textural pile in a honey tone. The genuine leather seating is a warm saddle tan. The blues, honey tones and bronze shades are a fine background for a choice of accessories and lighting that make this area dramatic but distinguished.

- Stainless steel electric sliding door to cockpit
- Aft electric window/Electric Door
- Sideboard with refrigerator, bottle & glass storage
- Custom leather couches
- U-shaped leather settee
- Coffee table
- Entertainment center with 42" plasma TV, DVD, VCR, stereo/CD and home theater system
- Spiral staircase to flybridge
- Day head with Vacuflush head
- Silhouette blinds
- 110V receptacles

Dining

The dining table is a fabulous focal point for a beautiful table setting and elegant dining. The chairs are upholstered in brown chenille tweed. The styling of the chairs includes upholstered back and seats that offer comfort and well as color interest.

- Extendable dining table with 8 chairs
- Overhead & indirect lighting with dimmer switches
- Telephone outlet
- Tinted oval side windows
- Stereo speakers linked to salon unit
- Spiral staircase to lower deck
- 110V Receptacles

Galley

- Avonite counters
- Dishwasher
- Cabinet and drawer storage
- GE Electric range
- Kenmore oven
- Garbage disposal
- Broan trash compactor
- GE Profile microwave oven
- Overhead & indirect lighting
- Electro-hydraulic movable bulkhead between salon & dining area
- Sub-Zero refrigerator & freezer with icemaker
- Sliding door to portside deck
- Stainless steel sink
- Teak sole
- Telephone outlet
- Tinted side windows
- Wine storage and cooler in hallway
- Wood flooring
- 110V Receptacles

Pilothouse

- AC/DC Control panel
- Furuno 3D Navnet
- Remote start/stop Gen Set
- Remote watermaker start
- Anchor windlass remote control
- Autopilot controls
- Electric & manual blinds for windshield
- Bow thruster control
- Trim tab controls
- U-shaped settee with table
- Telephone outlet
- Chart table with storage
- Compass
- Teak sole
- Electronic engine controls w/synchronizers
- Tilt steering wheel
- Helm and companion seats
- Rudder angle indicator
- Searchlight control
- Sliding door to starboard side deck
- 110V Receptacles

Master Stateroom

The Master Stateroom features upholstered loveseats in the same saddle tan leather as seen in the salon. The bedspread is in rich cashew chenille damask with detailed outline quilting. The

new shams and throw pillows provide the color. Trims are in bronze. The woodworking is of spectacular beauty and can support a large piece of fine art as a focal point over the king size bed.

- King size bed with drawer storage
- Dressing table with stool & drawers
- (2) Night stands
- Settee w/storage drawers
- Bed shams and pillows
- Toshiba flat screen 40"
- Overhead & reading lights
- Safe
- AM/FM stereo CD/DVD player - JVC
- Refrigerator
- Emergency escape hatch
- Telephone outlet
- Silhouette blinds - Hunter Douglas
- SAT Receiver
- En-suite bathroom

Master Head

The master head features, opening portlight, overhead lighting, storage lockers, tub with shower and Jacuzzi, twin sinks and a Vacuflush head.

VIP Stateroom / Forward

The VIP Stateroom features a bedspread in a geometric pattern of soft bronze with blue accents and block quilting. Coordinating fabrics include a golden silk ticking, antique bronze velvet and blue Lapis Irish linen. Leather seating is saddle tan and bed spreads and pillows.

- Settee with storage drawers
- Dressing table w/ stool & drawers
- Queen size bed with drawer storage
- (2) Night stands
- 25" flat-screen TV
- AM/FM stereo CD/DVD player - JVC
- Walk-in closet
- Opening portlights
- Overhead and reading lights
- Telephone outlet
- Satellite receiver
- Emergency escape hatch
- VIP en-suite head with Vacuflush head sink & stall shower

Guest Stateroom / Port

Twin side-by-side beds and a Pullman berth have new blue bedspreads. Bed headboards are in soft tan leather and once again, the honey carpeting completes the room with a light background.

- (2) Full-size single berths w/drawers below
- Hanging locker with shelves
- Nightstand with storage
- Sharp TV
- Opening portlights
- Overhead & reading lights
- En-suite head with sink and stall shower, Vacuflush head

Guest Stateroom / Starboard

Twin side-by-side beds and a Pullman berth. Bed headboards are of Cashew-Moccasin suede that adds texture without overpowering the fabrics in this stateroom. The honey tone carpet provides a light backdrop and gives a spacious appearance.

- (2) Full-size single berths w/drawers below
- Hanging locker w/shelves
- Nightstand with storage
- Sharp TV w/ DVD
- Overhead and reading lights
- Phone outlet
- En-suite bathroom with sink and stall shower, Vacuflush head

Captain & Crew's Quarters

The Captain's Cabin is located forward to starboard and features a large berth, overhead & reading lights, portlight, teak sole, telephone outlet and 110V receptacles. The Crew's Cabin is opposite the captain's area and has upper and lower single berths, a hanging locker, overhead and reading lights, port light, teak sole, telephone outlet and 110V receptacles.

Adjoining these cabins and all the way forward are the Captain/Crew Quarters with access to the foredeck via a hatch, a sideboard unit with/microwave oven, refrigerator, sink and Avonite counter, opening portlights, overhead lighting, a settee with table, storage lockers, teak sole and phone outlet.

The shared crew bathroom has Avonite countertop, duplex GFI receptacle, exhaust fan, overhead lighting, Vacuflush head, sink, stall shower, Teak and Holly sole.

LAUNDRY

The laundry center is located off the lower accommodation companionway. It features a washer and dryer, overhead lighting, storage and linen shelves. New Bosch washer and dryer.

Electrical Equipment

- (2) 27.5 Onan kW generators
- (2) Generator gauge packages
- (2) Voltage stabilizer transformers
- Additional 95 amp battery charger
- (2) 50 Amp/240V dockside services
- 110V Receptacles
- Batteries heavy duty
- Central vacuum system
- Twin beam searchlight
- Shore cable inlets, TV & phone
- (2) Shore power cable handling systems
- Sat Phone Tracvision KVH Fleet55 with fast access
- TV antenna
- (2) Isolation transformers
- Polarity check system
- (3) Underwater Lights

Electronics & Navigation Equipment

- Stereo linked to main stereo system
- Furuno Navnet 3D
- Furuno 1943C GPS/chart plotter/radar 64 nm
- VHF radio - ICOM 604
- Hardtop with integral arch
- GPS/chart plotter, Noble Tech
- Satellite communications system
- Furuno Nav Pilot
- Simrad J300X autopilot junction box
- ICOM 502 VHF radio in place of standard Shipmate
- Simrad IS15 speed log and depth sounder instruments
- GPS interfaced w/ radar & autopilot
- Stereo CD player
- CCTV w/fixed cameras in engine room & aft deck
- Compass
- CCTV monitor upgrade
- Furuno FI-50
- Complete Prodigy Remote System for TV sound

Cockpit

- Cockpit seat cover
- Removable s/s railings for swim platform
- MarQuipt Sea Stair
- Side boarding gates
- Passarelle
- Swim platform with auto launch and retrieve swim ladder
- Docking station w/rudder angle indicator, engine, bow thruster and stern thruster controls
- Docking windlasses (electric)
- Engine room access from side deck
- Self-draining deck
- Shower, hot & cold
- Stereo speakers linking to salon unit
- Stern docking lights
- Storage lockers
- Table & chairs
- (2) Transom doors
- Transom storage area w/vertical electro-hydraulic door
- Upholstered seating
- Freshwater wash-down
- Teak deck and stairs

Fore Deck

Foredeck features access to crew cabin, anchor windlass remote control, upholstered bench seat, chain locker, freshwater wash-down, storage lockers and sunpad w/storage below, and sunpad cushion cover.

Flybridge

- Anchor windlass remote control
- Autopilot controls
- Console and seat covers
- MarQuipt 1,320 lb. davit
- Engine controls, electronic w/ synchronizers
- Full engine instrumentation
- Teak deck
- U-shaped settee w/table
- Wet bar/refrigerated cool box, sink & grill

- Helm seat w/twin companion bench seat
- Hydraulically raised instrument console
- Rudder angle indicator
- Searchlight control
- Stereo/CD
- Sunpad on aft flybridge
- Tilt steering wheel
- Trim tab controls
- Complete factory hardtop with EZ2CY track-to-track custom enclosures w/ aft deck canvas
- Bow and stern thruster controls

Deck Equipment

- MarQuipt chocks
- MarQuipt Davit 1320 lbs.

Engine Room

- Oil change system for engines, transmissions & generators
- 360 Degree camera with controls in pilothouse
- Acoustical insulation
- Hydraulic anchor windlass
- Air conditioning chilled water zoned with reverse cycle heat
- Automatic, engine driven and manual bilge pumps
- Hydraulic bow thruster with 3-station controls
- Engine room blowers
- Fire protection system auto & manual
- Electric stern thruster with 3-station controls
- 130 Gal. holding tank with dockside & overboard pump out
- V-drive propulsion system
- Power assisted hydraulic steering
- 5-Bladed propellers
- Remote fuel shut-offs
- Water-cooled exhaust mufflers
- Water pump - automatic w/backup
- Electric fuel priming pump
- Oil change system for engines, transmissions & generators
- Engine room work bench with vice & (2) 110V outlets
- 800 GPD Village Marine watermaker

Remarks

"Blackjack" is a rare opportunity to own one of the few yachts in its size class that can literally do it all. Featuring four staterooms, two of which house Pullman berths, this yacht will accommodate a total of ten, and is perfect for a large family or an owner with a lot of guests.

"Blackjack" has spent her life between the Pacific Northwest, and the Northeast US, so she shows almost no wear on her exterior teak decks and gel coat. The metals all shine as they should, and the interior of the yacht is pristine. There is no other yacht in this size class that will come close in condition. A must see!

Exclusions

"Blackjack" is a registered name and does not convey. A detailed list of exclusions will be provided at the time of sale, upon written request.

Exclusions

Owner's personal belongings.

Disclaimer

The Company offers the details of this vessel or yacht in good faith but cannot guarantee or warrant the accuracy of this information nor warrant the condition of the vessel. A buyer should instruct his representatives, agents, or his surveyors, to investigate such details as the buyer desires validated. This vessel or yacht is offered subject to prior sale, price change, or withdrawal without notice.

PHOTOS

Aft Deck



Aft Deck



Salon



Salon



Salon



Salon / TV



Dining



Galley



Galley



Galley



Galley



Day Head



Master Stateroom



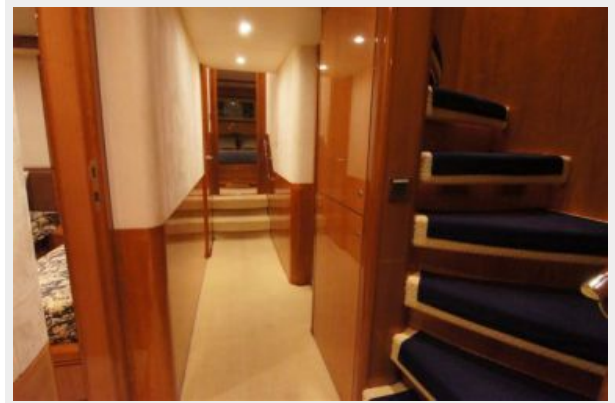
Master Stateroom



Master Head



Lower Companionway



VIP Stateroom



VIP Stateroom



VIP Head



Guest Stateroom



Guest Head



Guest Stateroom



Laundry



Bow



Bow



Flybridge / Helm



Flybridge Seating



Flybridge / Settee



Flybridge



Flybridge



Boat Deck



Walk-Around Decks



Engine Room



Engine Room



Aft View



CONTACTS

Andrey Shestakov, leading yacht broker of the sales department of Shestakov Yacht Sales Inc. Shestakov Yacht Sales Inc., the official representative of the Miami/Fort Lauderdale FL headquarters.

Contact details

Email: andrey@shestakovyachtsales.com

Web: shestakovyachtsales.com/en/

Telephones

USA: +1(954)274-4435

Office hours

Monday – Saturday: **9:00 - 21:00** EDT

Sunday: **closed**

Address



Harbour Towne Marina, 850 NE 3rd St,
STE 213, Dania, FL 33004