

## МОНЕЕ — GRAND BANKS



**Судостроитель:** GRAND BANKS

**Год постройки:** 1988

**Модель:** Траулер

**Цена:** ЦЕНА ЯХТЫ ПО ЗАПРОСУ

**Местонахождение:** United States

**Длина общая:** 32' 0" (9.75m)

**Ширина:** 11' 6" (3.51m)

**Мин. осадка:** 3' 9" (1.14m)

**Крейс. скорость:** 7 Kts. (8 MPH)

**Макс. скорость:** 10 Kts. (12 MPH)

Купить **МОНЕЕ — GRAND BANKS** а также выбрать подходящую вам яхту из нашего каталога яхт вам поможет опытный яхтенный брокер Андрей Шестаков. На сегодняшний день компания **Shestakov Yacht Sales Inc.** имеет большое количество яхт в собственном списке продаж, а также тесно сотрудничает со всеми крупными яхтенными производителями по всему миру.

Для того чтобы купить яхту **МОНЕЕ — GRAND BANKS** а также проконсультироваться по любому вопросу связанному с покупкой, продажей, чартером яхт позвоните по телефону **+7(918)465-66-44**.

# ОГЛАВЛЕНИЕ

ОГЛАВЛЕНИЕ	2
ХАРАКТЕРИСТИКИ	3
Обзор	3
Основная информация	4
Размеры	4
Скорость, вместимость и масса	4
Размещение	4
Корпус и палуба	5
Информация о двигателе	5
ПОДРОБНОЕ ОПИСАНИЕ	6
Accommodations	6
Deck and Hull	6
Engines and Machinery	7
Electrical Equipment	7
Electronics	7
2013/2014 Upgrades/Updates	8
Disclaimer	8
Исключения	8
Отказ от ответственности	8
ФОТОГРАФИИ	9
КОНТАКТЫ	17
Контактная информация	17
Телефоны	17
Время работы	17
Адрес	17

# ХАРАКТЕРИСТИКИ

## Обзор

### OVERVIEW

A modern classic, the Grand Banks 32 is one of the best selling small quality trawler designs ever produced. A total of 861 were built during her production run from 1985-1995 and used ones are always in demand. Her distinctive profile remained essentially unchanged since the original wooden models were introduced back in 1965. At a distance it is difficult to distinguish between a 1973 wooden Grand Banks 32 and one of the newer fiberglass models. Powered by a single 135 HP Lehman diesel, owners report long hours of 7 knot cruising at under 3 GPH with a range of 500+ miles. A full length skeg protects the underwater gear and hard chines aft help to stabilize the ride. The interior layout is well arranged with an L-settee to starboard and an additional settee to port, a galley forward to port and a lower helm station to starboard. Storage is adequate, the teak interior woodwork is elegant and visibility from the lower helm station is very good. The aft deck is large enough for several deck chairs and wide side decks, typical of the entire Grand Banks line of boats over the years offer great access to the foredeck and aft deck for easy and safe line handling. The Grand Banks 32's are dependable and seaworthy small cruisers with immense eye appeal and excellent resale value.

### BROKER'S REMARKS

"Mohee" is an exceptional condition Grand Banks 32 with a Bow Thruster, Newly installed air conditioning system and has been well maintained with many upgrades done during the fall 2013/2014 lay-up period.

**NICEST YOU'LL FIND . . . ACT QUICKLY ON THIS ONE/ IN THE WATER AND READY TO GO TO THE BAHAMAS OR BEGIN YOUR GREAT LOOP ADVENTURE !!!**

**Additional Comments:** One of the most popular Grand Banks models ever introduced, this high-end, later year, fuel efficient, and seaworthy trawler has been thoughtfully outfitted and elegantly appointed by an experienced couple to explore coastal cruising waters, lie comfortably at anchor or in port and to serve as a pleasant 2nd home. MOHEE is very well cared for, and has seen many upgrades including bow thruster, walk-through transom door, hot-cold cockpit shower, Raymarine Radar and E120 12" screen GPS chartplotters at each helm (with latest Navionics charts for all of North-America, the Bahamas and the Caribbean), Xantrex 2000W inverter-charger and new switches, breakers and cables. A 2013 survey confirms she's in very good condition and the few minor items identified have all been corrected. 2013-14 additions include an electric toilet with new hoses, new AC-Heat unit, new 4D batteries, new cockpit awning and sunbrella canvas throughout, textaline window covers, 2x140W solar panels, Honda 2000W generator, O-B motor and new dinghy. Stored inside a hangar in Fort Pierce, FL over the summer/fall

where she had extensive professional detail work done including hull & prop cleaning & coating, brightwork varnish, hull & topsides waxing. She was just re-launched in Dec. '14 and is fully equipped to cruise the waterways and ready to head for the Islands.

## Основная информация

---

Тип судна: Траулер	Подкатегория: Sedan
Модельный год: 1988	Год постройки: 1988
Страна: United States	Верх: Bimini Top
Открытая палуба мостика: Да	Кубрик: Да

## Размеры

---

Длина общая: 32' 0" (9.75m)	Ширина: 11' 6" (3.51m)
Мин. осадка: 3' 9" (1.14m)	

## Скорость, вместимость и масса

---

Крейс. скорость: 7 Kts. (8 MPH)	Макс. скорость: 10 Kts. (12 MPH)
Водоизмещение: 17000 Pounds	Вместимость воды: 105 Gallons
Вместимость сточного бака: 30 Gallons	Объем топливного бака: 250 Gallons

## Размещение

---

Всего кают: 1	Всего ком. состава: 1
---------------	-----------------------

## Корпус и палуба

---

**Материал корпуса:** Fiberglass

**Материал палубы:** Teak and Fiberglass

**Комплектация корпуса:** Semi-Displacement

**Цвет корпуса:** White

## Информация о двигателе

---

**Двигатели:** 1

**Производитель:** Ford Lehman

**Модель:** Super 135 Diesel

**Тип двигателя:** Inboard

**Тип топлива:** Diesel

---

# ПОДРОБНОЕ ОПИСАНИЕ

---

## Accommodations

---

The main cabin can be accessed via cockpit door. In typical Grand Banks fashion, the interior is golden Burmese teak joinerwork with teak parquet cabin soles throughout the cabin. The boat has sleeping accommodations for up to 5 people with the convertible port settee in the main salon that converts to a double, the port side settee which will sleep 1 and the forward stateroom with vee berths to sleep 2.

As you enter the main cabin via cockpit door there is an "L" settee and a centerline teak table located immediately to starboard inside the door and forward is the lower helm station. There is a settee to port will convert to a slide out berth measuring a full 3' 5" width by 6' 1" long.

Forward to starboard and across from the helm station is the galley with a propane 3-burner Princess stove with oven. The galley also features a Norcold SCQT-6404 dual voltage refrigerator - front opening; a single stainless steel sink; hot and cold pressure fresh water with ample storage & counter space.)

Starting forward, there is a large V berth with filler, six drawers below for storage, a double hanging locker, and full headroom.

Next aft is a enclosed head with a New electric toilet, vanity sink, curtained stand-up shower with teak grate & plenty of storage space.

The galley features a Norcold SCQT-6404 dual voltage refrigerator - front opening; a single stainless steel sink; hot and cold pressure fresh water with ample storage & counter space.

## Deck and Hull

---

- New cockpit awning and sunbrella canvas throughout
- New Textaline window covers
- New Handrail and cap rail covers
- Lofrans Anchor Windlass
- 35 lb CQR plow anchor with 200' Chain
- 20H Danforth Anchor with 25' of Chain and 150' Line
- SS Weaver davit plates and ladder on swim platform
- Transom door
- Teak Decks (good condition)
- NEW 9' Foldable Dinghy with plywood floor
- 3.3HP 2 Stroke Dinghy outboard

- **Freshly varnished Brightwork**
- **Docklines, Fenders, Lifejackets, Flares, Fire extinguishers**

## **Engines and Machinery**

---

- **Single 135 HP Ford-Lehman Diesel with approx. 2,101 hours use**
- **Fresh water cooling Engine**
- **Dual fuel filters**
- **Bow Thruster**
- **Electric Head (New 2013)**
- **8,000 BTU Air conditioning system (Newly installed 11/2014)**
- **Holding tank with Y-Valve, mascerator**
- **Raritan Hot water heater**
- **Espar diesel Heater**
- **Hart systems tank monitor(Fuel,water,holding tank)**
- **2 NEW Kyocera 140 Watt Solar Panels**

## **Electrical Equipment**

---

- **10 Volt Shorepower(AC)/ 30 amp ( Inlet fore and aft)**
- **NEW Honda 2U2000i 2000 Watt Portable Generator**
- **12 Volt Ship Power (DC)**
- **2 NEW 4D House Batteries**
- **Xantrex 2000W inverter-charger and new switches, breakers and cables.**
- **XANTREX LINK 200 Battery Monitor and an S.V.S. System Voltage.**
- **2 NEW 140W High End Kyocera solar panels**

## **Electronics**

---

- **Raymarine E120 Radar/GPS,Chartplotter with 12"screen , 4KW Radome**
- **GPS chartplotters at each helm (with latest Navionics charts for all of North-America, the Bahamas and the Caribbean)**
- **Icom M100 VHF Radio**
- **Searchlight**
- **FIAMM Electric air horn**
- **Compass at Both helms**
- **Ster**
- **eo**
- **Xintex S-2 Propane monitor and control**

---

## 2013/2014 Upgrades/Updates

---

- Electric toilet with new hoses
- NEW Honda EUi 2000W Portable generator
- New 8,000 BTU AC/heat unit
- New 4D batteries
- Fuel tanks emptied, flushed and cleaned
- New cockpit Bimini frame and new Sunbrella canvas throughout
- New handrail and cap rail covers
- Textaline window covers
- 2 x140W solar panels
- 3.3HP 2-cycle O/B motor
- New 9ft Foldable dinghy w/plywood floor
- Anti-fouling, and barnacle barrier on all props
- Brightwork varnish
- Hull and topsides buffed and waxed
- Tint film on windows (removable)

---

## Disclaimer

---

The Company offers the details of this vessel in good faith but cannot guarantee or warrant the accuracy of this information nor warrant the condition of the vessel. A buyer should instruct his agents, or his surveyors, to investigate such details as the buyer desires validated. This vessel is offered subject to prior sale, price change, or withdrawal without notice.

---

## Исключения

---

При продаже яхты исключаются личные вещи владельца.

---

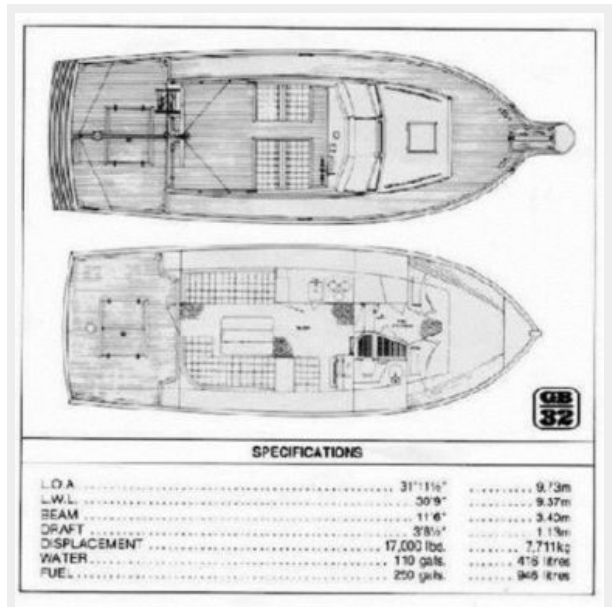
## Отказ от ответственности

---

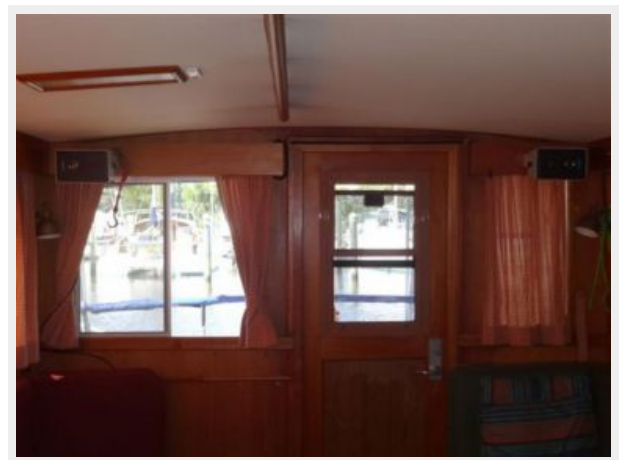
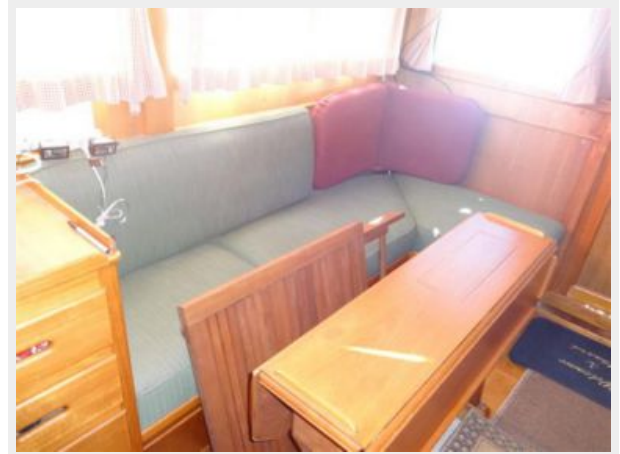
Компания предоставляет описание судна или яхты добросовестно, но не может гарантировать точность этой информации, а также не ручается за техническое состояние. Покупатель должен проинструктировать своих агентов или оценщиков исследовать представленную информацию более подробно, по собственному желанию. Продажа судна или яхты, изменение цены или снятие с продажи будет происходить без предварительного уведомления.



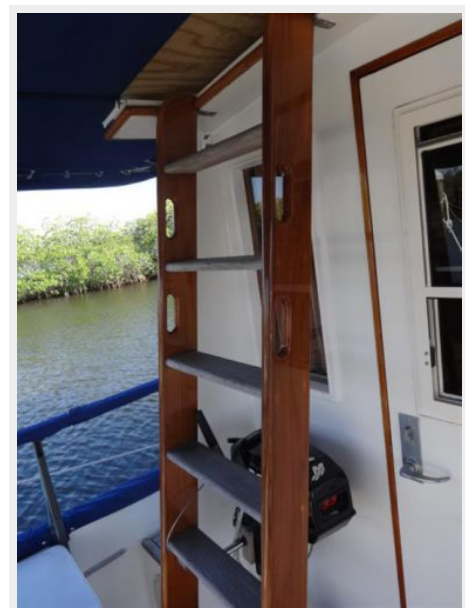
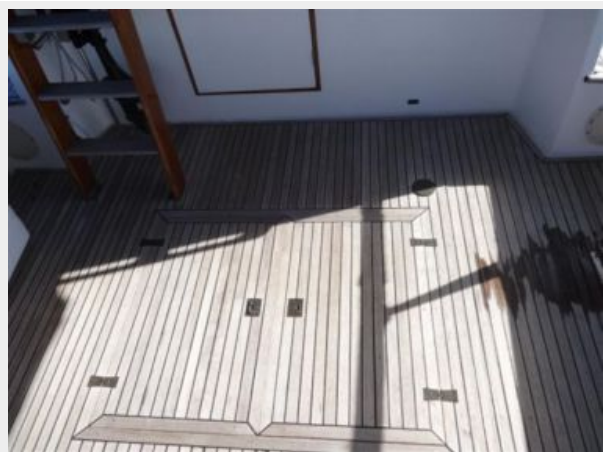
# ФОТОГРАФИИ

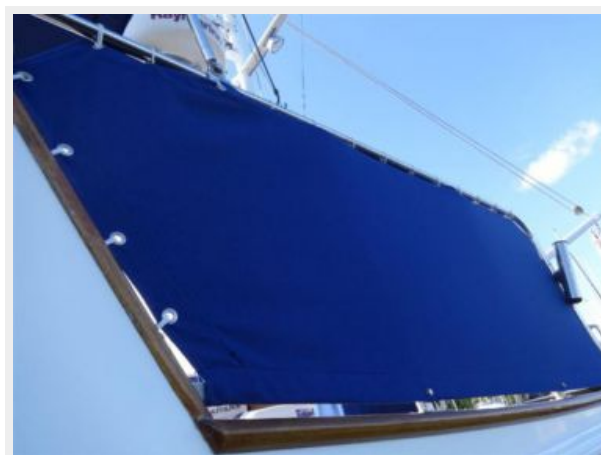
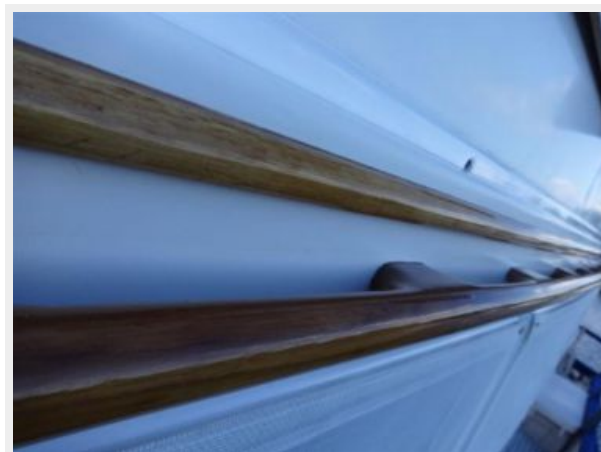
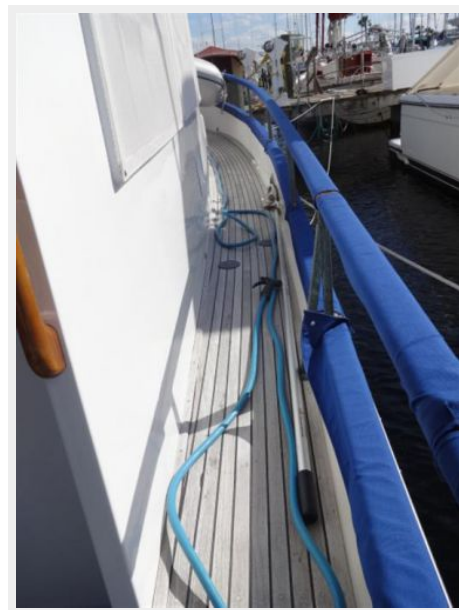
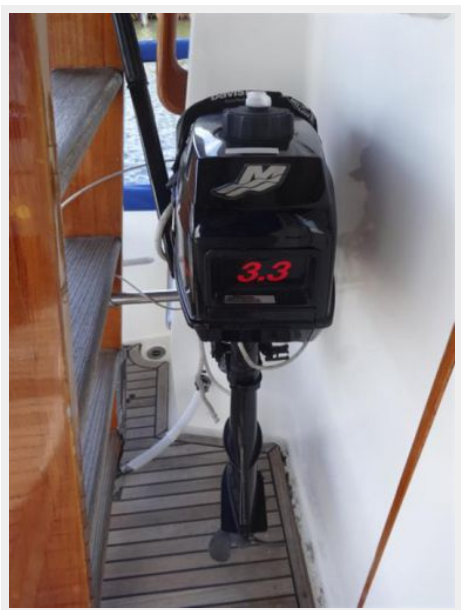


















# КОНТАКТЫ

---

Андрей Шестаков (Andrey Shestakov) – ведущий яхтенный брокер отдела продаж яхт и судов компании Shestakov Yacht Sales Inc. Официальный представитель Shestakov Yacht Sales Inc. для русскоговорящих клиентов в центральном офисе компании в Майами/Форт Лодердейл/Флорида/США.

## Контактная информация

---

Email: [andrey@shestakovyachtsales.com](mailto:andrey@shestakovyachtsales.com)

Web: [shestakovyachtsales.com](http://shestakovyachtsales.com)

## Телефоны

---

Краснодарский край: **+7(918)465-66-44**

США, Майами, Флорида: **+1(954)274-4435**

## Время работы

---

Понедельник – Суббота: **9:00 - 21:00**  
EDT

Воскресенье: **Закрито**

## Адрес

---



Harbour Towne Marina, 850 NE 3rd St,  
STE 213, Dania, FL 33004